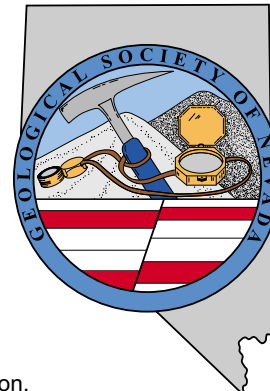


GSN NEWSLETTER



April 2006, Vol. 21, No. 4

CALENDAR OF GSN EVENTS

PRESIDENT

Dieter Krewedl
Krewedl Mineral Exploration
dkrewedl@usamedia.tv

VICE PRESIDENT

Ellie Davie Leavitt
Consultant
zoracdavie@aol.com

SECRETARY

Leslie Olmstead
Agnico-Eagle (USA) Limited
lolmstead@agnico-eagleusa.com

TREASURER

Camille Prenn
Mine Development Associates
cami@mda.com

MEMBERSHIP CHAIR

Greg McN. French
Consulting Geologist
GMcNFrench@aol.com

PUBLICATION CO-CHAIRS

Elizabeth A. Zbinden
Round Mountain Gold Corp.
E_Zbinden@geology.reno.nv.us

Ruth Carraher

Gold Summit Corp.
racarraher@goldsummitcorp.com

OFFICE MANAGER

Laura Ruud
gsn@mines.unr.edu

**April 12
Wednesday**

WINNEMUCCA CHAPTER MEETING. Speaker: Tim Thompson, Chief Geologist, Bald Mountain Mine. Title: "Exploration and Production History for the Bald Mountain District, White Pine County, Nevada". The Martin Hotel, W Railroad and Melarkey Streets. Drinks at 6:30 pm, presentation at 7:00 pm. Sponsored by **Small Mines Development**. Contact Kim Craig, Chapter President, for more info, 775/529-5001 x1340, kim_craig@Placerdome.com. **Election of chapter officers for 2006-2007 will occur at this meeting!** See page 8 for abstract.

**April 20
Thursday**

ELKO CHAPTER MEETING. Speaker: Raul Madrid, Victoria Resources. Title: "Exploration Strategies, and Techniques as well as Structural Systematics, Geometries, and Occurrence of Selected Gold Belts from the Great Basin and Abroad: Implications for Long Term Assessment of Predictive Methods for Exploration and Development". Western Folklife Center, Elko, NV. Social Hour begins at 6:00 pm, talk at 7:00 pm. Contact: John Watson, Chapter President, for more info: 775/738-2062, jwatson@barrick.com. See page 10 for abstract.

**April 21
Friday**

GSN MEMBERSHIP MEETING. Speaker: Bill Stanley, VP Exploration, Atna Resources Ltd. Title: "Update on Atna's Pinson Underground Project, Nevada". Reno Elks Lodge, 597 Kumble Ln, Reno, NV. Drinks at 6 pm, dinner at 7 pm, talk at 8 pm. Contact Laura Ruud for reservations, 775/323-3500, gsn@mines.unr.edu.

**April 27
Thursday**

SOUTHERN NEVADA CHAPTER MEETING. Speaker: Otto Holmquist, GEOLINES, LLC. Topic: TBA. Room 102, Lily Fong Geoscience Building, UNLV, Las Vegas, NV. Social at 6:00 pm, business meeting at 6:30 pm. Presentation at 6:45 pm. Contact Robyn A. Howley, Chapter President, 702.895.5054, email - robynhowley@yahoo.com for more information.

May 2, 3 & 4

MSHA 3-Day New Surface Miner Safety Training in RENO. 8 am-5 pm.

**May 9
Tuesday**

MSHA 1-Day Annual Refresher Surface Safety Training 8 am-5 pm. Contact Laura to reserve a spot for either course: gsn@mines.unr.edu, 775-323-3500.

**May 19
Friday**

GSN MEMBERSHIP MEETING. Speaker: Eric Struhsacker, AuEx Ventures, Inc., will be speaking on the Pequop property.

July 15

GSN GOLF TOURNAMENT. Washoe County Golf course. See page 9. BBQ and greens fees sponsored by **Eklund Drilling Company, Inc.**



GSN Newsletter is published monthly except June and July
Geological Society of Nevada, PO Box 13375, Reno, NV 89507 USA, 775/323-3500, www.gsnv.org
Office location: Laxalt Mineral Research Center, Rm 266, UNR. Hours: Mon thru Fri, 1-4 pm

FROM THE PRESIDENT

Dieter Krewedl, *GSN President 2004-2006*

Our current fiscal year will end in May; and **GSN Officers and Directors for 2006/2007** need to be elected this month. For the first time in GSN's history, voting for the 2006/2007 Officers on the Executive Committee and the two expiring terms of the Elected Members of the Board of Directors will be done by the entire GSN membership in April instead of just those members present during our May meeting in Reno. As stipulated in the GSN by-laws, a ballot containing the slate of candidates for the

continued on page 2

APRIL MEETING SPONSOR



MINING PERSONNEL SERVICES

LANCE TAYLOR
PRESIDENT

970 CAUGHLIN CROSSING, SUITE 102 • RENO, NV 89509
P.O. BOX 11532 • RENO, NV 89510

775.746.7146
www.geotemps.com

Fax 775.746.7156
ltaylor@geotemps.com



FROM THE PRESIDENT *continued from page 1*

various positions will be sent to all GSN members either by electronic or postal mail during the first week in April. The slate of candidates is also presented on the next column of this page for your review. This is GSN's attempt to allow every member to have a voice in determining the leadership of this great Society. I hope you will take the time to vote.

This year's **Prospector and Developers Association of Canada** convention (PDAC) in Toronto was an exciting meeting due to the continued optimism for higher commodity prices. There was a great interest in Nevada, generated in large part by Rob McEwen and US Gold's announced intention to acquire four junior exploration companies controlling properties along the Battle Mountain-Cortez trend. The GSN represented Nevada very well with a booth hosted by several volunteers. Many thanks are extended to all of the booth sitters and especially to Ellie Leavitt, Elizabeth Zbinden and Ruth Carraher.

Thanks also to Bill Neal of Midway Gold for a great presentation during the March meeting on the Spring Valley discovery located just north of the Rochester mine. Spring Valley was one of the most significant discoveries in Nevada during 2005. And, it is not located along one of the major mineralized trends! The **April GSN talk** by Bill Stanley will be an update on Atna's Pinson underground project, which was another significant discovery in Nevada last year. We appreciate **GEOTEMPS Inc.** for sponsoring the social hour at the April meeting, which is always a great time to network and meet new friends.

The second annual **GSN ski day** at Mt Rose on March 19 was a fun, social event even though it was cold and cloudy. However, the snow was great and the food at the barbeque was outstanding. Thanks to Eric and Laura Ruud for organizing it for everyone.

Looks like the GSN will be very active this summer. Ellie Leavitt is organizing a late **Spring field trip on Saturday and Sunday, June 10th and 11th**, to the Seven Troughs area of northwestern Nevada. Details will be provided in the May newsletter. On Saturday, July 15th Bob Felder is organizing the annual **GSN golf tournament** at the Washoe County golf course. Eklund Drilling has again generously agreed to cover all of the costs for the golf and barbeque. On August 24 **Doug Silver** has agreed to continue his Silver Summer Series at the home of Opal Adams and Rich DeLong. Mark these dates on your calendar as the GSN continues to provide opportunities for members to generally enjoy themselves while learning about geology.

Lastly, I hope many of you will be able to attend our April meeting in Reno. In addition to the social hour and

presentation previously mentioned, we will be awarding two GSN members with Honorary Membership. This recognition has only been given to a few individuals, who have made outstanding contributions to the advancement of the geological sciences in Nevada. These two individuals will not be told of their award in advance of the meeting. So it will be a surprise to them and a great opportunity to honor two very special GSN members.

CANDIDATES FOR 2006/2007 GSN OFFICERS & DIRECTORS

The GSN Board of Directors and the GSN Executive Committee are recommending the following slate of candidates to serve as Officers and Directors for 2006/2007:

Officers for the 2006/2007 GSN Executive Committee

President
Ellie Leavitt

Membership Co-chairs
Greg French
Opal Adams

Vice President
Greg Hill

Publications Co-chairs
Marilyn Miller
Debbie Schneider

Secretary
Leslie Olmstead

Treasurer
Camille Prenn

GSN Board of Directors
Class A: Three Year Term -
2006 to 2008
Fred Breit
Steve Green

During the first week in April, a ballot containing the recommended slate of candidates for next year's Officers and Directors will be sent to all GSN members. Those members, who receive their GSN Newsletter by email, will also receive their ballot via email and those GSN members, who receive their newsletter through the mail, will receive their ballot through the mail. The ballot must be returned to the GSN office within ten working days of the date it was distributed. Results of the election will be published in the May GSN newsletter.

VISIT THE GSN WEBSITE AT:
www.gsnv.org

Thanks to CGS, Inc. for hosting the March meeting.

GSN April 21, 2006 Membership Meeting

Date: Friday, April 21, 2006

Time: Social-6:00, Dinner-7:00, Meeting-8:00

Reservations: 775/323-3500; fax 323-3599,
e-mail gsn@mines.unr.edu

Deadline: Reserve by 11 am Thursday, April 20th

Location: Elks Lodge, 597 Kumle Lane, Reno, NV

Directions: Across (W) from the Reno-Sparks Convention Center (S Virginia St), behind the Les Schwab Tire Center

Speaker/topic: William Stanley, Exploration for Atna Resources Inc. See abstract below.

UPDATE ON ATNA'S PINSON UNDERGROUND PROJECT, NEVADA

Bill Stanley, Vice President, Exploration for Atna Resources Ltd.

The Pinson Project is located in Nevada, one of the world's premier gold mining regions with annual production of over 6.9 million ounces (2004). The vast majority of gold endowment and production occurs in Northern Nevada, along four major Sediment-hosted gold belts, (Carlin, Battle Mountain, Getchell, and Independence). Significant additional production comes from epithermal volcanic-hosted deposits of the Northern Nevada Rift and the Walker Lane Volcanic provinces. Current gold reserves are approximately 64 million ounces. Total production may eventually exceed 200 million ounces as new discoveries such as Cortez Hills (>10 million contained ounces gold) and Pinson continue to add to the resource base in this prolific gold region.

The Pinson Mine Project is situated within the 30 million ounce Getchell Gold Belt approximately 15 kilometers southwest of Newmont's Twin Creek Mine complex (352,810 ounces of gold production in 2004 & 5.8 million ounces of gold in various categories) and 8 kilometers south of Placer Dome's Getchell/Turquoise Ridge Mine Complex (162,637 oz. Au production & 16.9 million ounces of gold in all mineralized categories). The Pinson Project includes over 13,000 acres of private fee lands and federal lode mining claims. Gold mineralization at the project is associated with elevated levels of mercury, arsenic, and antimony and is considered to be a Carlin-type gold system. Past mining of oxidized ores from the Pinson property by Pinson Mining Company produced over 985,000 ounces of gold prior to the closure of the mine in late-1999.

Modern exploration began in the early-1970s at Pinson and led to rapid discoveries by John Livermore, Peter Galli and Don Duncan of the Cordex Syndicate. Five open pits ore bodies were outlined between 1970 and 1985, including the A, B, C, CX, and Mag deposits. Gold production came from decalcified, locally silicified and/or argillized, fine-grained, limy sedimentary rocks of the Ordovician age, Comus Formation - the preferred host unit for the major deposits in the district. Mineralization at Pinson is focused along and adjacent to the range bounding Getchell Fault zone, a major ore control at the Getchell Mine.

Between 1997 and 2003, Pinson Mining (Barrick/Homestake partnership) drilled over 200 diamond and rotary drill holes (>70,000 m) on the property exploring the extensions of mineralization exposed at the bottom of the mine's several open pits. This work resulted in a number of encouraging high-grade gold intercepts in several target areas. Atna's initial exploration efforts commenced in August, 2004 and concentrated on two of these targets with known mineralization, the CX Zone, which plunges beneath the CX, C, and B pits and the Range Front Zone, which is the southern extension of the Getchell Fault zone. The program included a re-analysis of the mine database and over 9,000 meters of surface rotary and diamond core drilling. The result was an NI43-101 compliant mineral resource with a measured and indicated resource of 500,000 ounces gold with an additional 1.3 million ounces of gold in the inferred category. Atna initiated an underground program in May, 2005 to explore the Range Front, which is the larger and higher grade of the two main zones of mineralization. The objective of the underground work was to convert a portion of the Range Front resource to reserve category, to explore the Pinson anticline, and to provide a platform for further deep exploration drilling. To date, 800 meters of underground access-drifting and an additional 8,000 meters of underground and surface drilling have been completed.

The most significant development at the project during 2005 was the discovery of the Ogee Zone in the adit driving to the Range Front. Channel samples in the adit returned a weighted average of 23.7 grams/tonne across a true width of 10.5 meters. Follow-up drilling was performed from a decline established parallel to the Ogee Zone. The first hole cut 45 meters grading 33.3 grams/tonne gold. From current geologic understanding, the zone has a strike potential of over 150 meters and down-dip potential of more than 300 meters. The Ogee mineralization is hosted in a zone of complex faulting with associated collapse breccias serving as the principal host unit. Atna expanded the scope of its original work program to

continued on page 4

BILL STANLEY ABSTRACT *(continued from page 3)*

accelerate the exploration of Ogee in addition to continuing exploration and development drilling of the Range Front mineral resource.

Early in 2006 Atna completed its earn-in requirements on the Pinson project and is currently awaiting Pinson Mining Company's decision on its election to participate, sell or back-in to the project. Should Atna remain operator of the project, it will complete a feasibility study during the second quarter of 2006 and expects to begin ore shipments during the third quarter of 2006.

Bill Stanley received his undergraduate degree from Central Washington University in 1977 and an MBA degree from Arizona State University in 2002. He started his career with Watts, Griffis & McQuat out of Anchorage, Alaska from 1977 to 1979. Bill then worked as an exploration geologist for Homestake Mining from 1979 to 1993 when he was involved with the McLaughlin Mine in California and the Wood Gulch and Ruby Mines in Nevada. He then worked for Cyprus Amax Minerals as District Geologist from 1994 to 1997 and as North American Exploration Manager from 1997 to 2000. Bill became a consulting economic geologist from 2000 to 2002 and since 2003 has been the Vice President of Exploration for Atna Resources, Ltd.

ACTIVITY UPDATE

Mike Brady, February 2006
www.activityupdate.com

NEVADA

Midway Gold Corp. announced that recent drill results at the Spring Valley Project include 21.3-35 meters @ 0.098 opt Au (SV05-159); 213.4-240.8 meters @ 0.200 opt Au (SV05-164) and 166.1-187.4 meters @ 0.030 opt Au (SV05-165).
M.J.: January 27

Atna Resources Ltd.(70%) announced that recent underground drill results at the Pinson/Ogee Zone Project include 10.5-15.8 feet @ 0.616 opt Au (UGOG-006); 47.5-51.5 feet @ 0.260 opt Au (UGOG-008); 55.5-62 feet @ 0.115 opt Au (UGOG-013); 86.8-107.5 feet @ 0.454 opt Au (UGOG-013); 213-227 feet @ 0.549 opt Au (UGOG-013); 247.5-263.5 feet @ 0.289 opt Au (UGOG-014) and 74-135.5 feet @ 0.505 opt Au (UGOG-015). (resource = 1,760,000 tons @ 0.302 opt Au measured+indicated)

Press Release: February 14

Newcrest Resources Inc. announced that it terminated its interest in the Fireball Ridge Property of AuEx Ventures Inc.
Press Release: February 7

Agnico-Eagle Mines Ltd. announced that it acquired an option to earn a 60% interest in the Granite Mountain Property of Bravo Venture Group Inc. for \$2,500,000 in exploration expenditures over 5 years.

Press Release: February 8

Bullion River Gold Corp. announced that it acquired an option to earn a 51% interest in the Gold Valley and Cortez South properties from Senator Minerals Inc. for \$20,000 cash, 250,000 shares and \$300,000 in exploration expenditures over 2 years.
Press Release: January 23

Gateway Gold Corp. announced that based on recent drill results at the Big Springs Project, resources aggregate 914,000 tons @ 0.345 opt Au inferred using a 0.2 opt Au cutoff. (was 904,200 tons @ 0.288 opt Au measured+indicated)
Press Release: January 30

Midway Gold Corp. announced that it purchased 102 unpatented mining claims south of its Spring Valley Project from Coeur d'Alene Mines Corp. for 40,000 shares.
Press Release: February 1

Placer Dome Inc.(60%) announced that reserves at the Cortez Complex aggregate 257,940,800 tons @ 0.041 opt Au proven+probable. (was 321,920,000 tons @ 0.047 opt Au proven+probable)
2005 Annual Report

Placer Dome Inc.(75%) announced that reserves at the Turquoise Ridge Mine aggregate 7,793,800 tons @ 0.565 opt Au proven+probable. (was 6,843,500 tons @ 0.615 opt Au proven+probable)
2005 Annual Report

Mill City Gold Corp.(40%) announced that recent drill results at the Eden Project include 460-465 feet @ 0.012 opt Au (ED-1); 300-320 feet @ 0.010 opt Au (ED-2) and 565-605 feet @ 0.023 opt Au (ED-4).

Press Release: February 14

Vista Gold Corp. announced that based on a recently completed feasibility study for the Hycroft Project, reserves aggregate 33,320,000 tons @ 0.020 opt Au proven+probable mineable at a 1.52/1.0 stripping ratio. (was 32,400,000 tons @ 0.017 opt Au proven+probable)

Press Release: January 30

White Knight Resources Inc. announced that recent drill results at the Gold Pick Project include 117.3-123.4 meters @ 0.033 opt Au (GPQ-11); 123.4-129.5 meters @ 0.031 opt Au (GPQ-12); 155.4-160 meters @ 0.012 opt Au (GPQ-15) and 160-167.6 meters @ 0.083 opt Au (GPQ-16). (resource = 2,600,000 tons @ 0.063 opt Au)

Press Release: February 15

American Bonanza Gold Corp. announced that based on recent drill results at the Gold Bar Project, resources aggregate 1,622,500 tons @ 0.091 opt Au inferred. (no previous data)
Press Release: February 9

Canyon Resources Inc. announced that based on recent drill results at the Reward Project, resources aggregate 2,640,000 tons @ 0.032 opt Au measured+indicated. (was 689,000 tons @ 0.062 opt Au)
N.M.: January 27

MINERAL EXPLORATION SERVICES

SOIL SAMPLING
CLAIMSTAKING
PROPERTY EVALUATION
MINE HAZARD FENCING

5655 Riggins Ct., #15, Reno, NV 89502
Tel: (775) 954-1082 Fax: (775) 829-6882
email: day@mineralexploration.com

Fire Assay
ICP - OES
ICP - MS
AAS
Custom Preparation
Bullion Analyses
BLEG

Corporate Office
1500 Glendale Avenue
Sparks, NV U.S.A. 89431-5902
Telephone (775) 356-0606
Fax (775) 356-1413

Chris Ioannakis, Managing Director,
Analytical Services

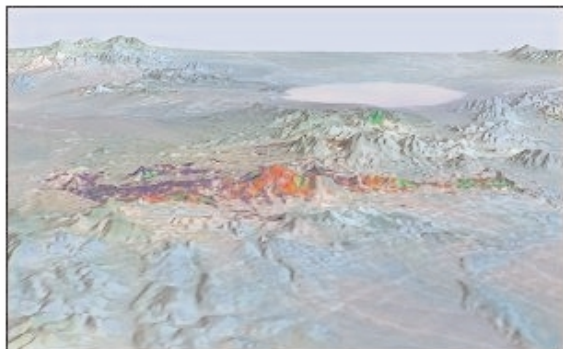


**American
Assay &
Environmental
Laboratories**

Elko Office
2320 Last Chance Road
Elko, NV U.S.A. 89801-4852
Telephone/Fax (775) 738-9100

E-mail: AALADMIN@aallabs.net
Website: www.aallabs.com

EXPLORATION with ASTER



Alteration Image, Goldfield, Nevada

- CUSTOM CORRECTED DATA
- ALTERATION IMAGERY
- EXTENSIVE GLOBAL ARCHIVES

WWW.ASTERIMAGES.COM
email: pusa@rmi.net
dwc@overhill-imaging.com

RENT A PIMA!!



IDENTIFY and MAP ALTERATION
MINERALS IN THE FIELD and CORE
CONTACT US FOR Rentals and Services

Spectral International, Inc
303 403 8383 pusa@rmi.net
www.specmin.com

SYMPOSIUM VOLUMES ARE BEING DELIVERED!!

If you attended the GSN's 2005 Symposium as a full-paid registrant you can start looking for your Proceedings to arrive in the U.S. Mail! I have had several people tell me that their 2-volume sets arrived in their mailboxes today, March 21st. All 91 manuscripts, 1,342 pages, and 10 pounds of it!

For those of you who purchased an extra set of the volumes and designated "Pick-Up in Reno" on the order form, you can pick those up in the office during GSN's regular business hours 1-4 p.m. Please call if you need to confirm that you are on that list, or if you want to make arrangements to pick them up.

**GSN Newsletter
Monthly Advertising Rates**

Business card size (3 1/2 x 2'') \$ 50.00
 Quarter page (3 1/2 x 4 3/4'') 150.00
 Half page (4 3/4 x 7 1/2'') 300.00
 Classified ads \$10/line
 (up to business card size)

For an advertising form, call the GSN office at 775/323-3500 or fax 323-3599. Digital or text ads must be received by the 20th of the month to appear in the following month's newsletter.



**Claim Staking / Soil Sampling / Grids
 Experienced / Dependable/ Trimble GPS**
 Gary Castagne 775-250-4879
 John Fernandez 775-815-2587

www.westernrecon.com



Enviroscientists, Inc.
 4600 Kietzke Lane, Suite C 129, Reno, Nevada 89502
 Phone: (775) 826-8822 Fax: (775) 826-8857
**Notices, Plans of Operations,
 Cost Estimates, TRI, Biological Surveys,
 Air Quality Permits & Audits**

Info@enviroincus.com www.enviroincus.com

*Jo Beth Allen
 Professional Graphics*

CAD Drafting/Digitizing/Scanning
 High Resolution Presentation Graphics
 Plotting/Printing
 Geologist

1055 Joshua Drive Phone: 775-324-7960
 Reno, Nevada 89509 Fax: 775-324-7583
 jobeth@yellowsb.net

ALS Chemex



We are a global analytical testing company serving the mining and mineral exploration industry in Nevada and around the world.

We specialise in:

- Assaying and geochemical analysis for mining and mineral exploration projects
- On-site contract mine laboratory management
- Environmental monitoring of mining operations
- Acid mine drainage studies

Contact our laboratories in Nevada to find out how we can help you with all of your project's analytical needs.

RENO, NV
 Phone: 775 356 5395

ELKO, NV
 Phone: 775 738 2054

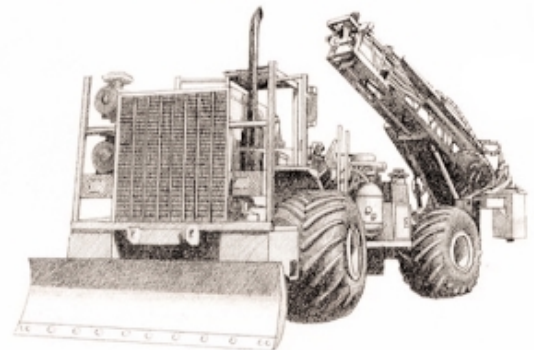
WINNEMUCCA, NV
 Phone: 775 625 4192

www.alschemex.com

*Right solutions....
Right partner*



Diversified Drilling LLC



*Providing drilling services to the mining/
 metals industry since 1980*

3650 Grant Creek Road
 Missoula, Montana 59808
 (406) 542-1010 Fax (406) 542-5065

sample Bags

HUGE INVENTORY  LOW, LOW PRICES

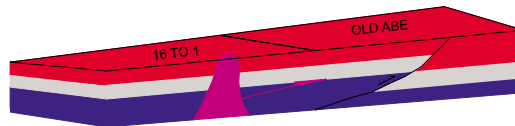
NEW ADDRESS!
LEGEND, INC.

988 Packer Way
Sparks, NV 89431

Off Glendale east of McCarran
phone: (775) 786-3003
fax: 786-3613
www.Lmine.com
email: info@Lmine.com

G.I.S. Land Services

Greg Ekins M.S. R.L.P. #32306 President
Mineral Landman - Computer Draftsman
"From Courthouse Records to Final Map"



AutoCad - ArcView - Mapinfo
Geologic, GeoChem and Land Status Maps
www.gislandservices.com

E: greg@gislandservices.com
P: 775-746-8803 F: 775-746-8802

6635 Broadridge Ct.
Reno. NV 89523

WE CAN HELP!

- Environmental and exploration support services
- Celebrating 40 years of service to the mining industry
- Experience in Mexico / Canada / Alaska



NORTH AMERICAN EXPLORATION INC.
NORTH AMERICAN MINE SERVICES INC.
GEOLOGY | GEOPHYSICS | GEOCHEMISTRY
HYDROLOGY | ENVIRONMENTAL SERVICES

447 North 300 West, Ste. 3 • Kaysville, Utah 84037 • Phone (801) 546-6453 Fax (801) 544-4554
nae@nae-xploration.com



DIXIE BULLOCK
DISTRICT MANAGER

412 NORTH MCCARRAN BLVD.
SPARKS, NV 89431

WILMA HATTER
SERVICE REPRESENTATIVE
HATTERW@SOSSTAFFING.COM

T. 775.331.5227 F. 775.323.7772
WWW.SOSSTAFFING.COM

A Division of SOS Staffing Services, Inc.



Carlin Trend Mining Supplies & Service

www.carlintrend.com

We are now able to conduct Archeological Services.

Please Contact
Jill Jensen

Archeological Survey,
Portable XRF Surveys or Rental,
Geological Consulting, Claim Staking,
Soil Sampling, AutoCad & GIS
Geology & Drafting Supplies

369 5th St.,
Elko, NV 89801

Phone 775-778-0668
Fax 775-778-0687

Big Sky Geophysics

Clark Jorgensen, M.Sc.
Geophysicist

*Field Work
Processing
Interpretations*

P.O. Box 353
Bozeman, MT 59771
USA

Phone: (406) 587-6330
Fax: (406) 587-6394
Mobile: (406) 580-9718
clark@bigskygeo.com

For more details, my background, and case studies,
visit my webpage at www.bigskygeo.com

Petrographic and Ore Microscopy Services

for applications in the following areas:

- Base and Precious Metals
- Industrial Minerals
- Mineral Exploration
- Geological Mapping
- Process Mineralogy
- Forensic Geology



P.O. Box 10080
American Canyon, CA 94503
Phone: 707-553-2772
E-Mail: sfmicro@earthlink.net

Schurer & Fuchs

BOARD OF DIRECTORS QUARTERLY MEETING REPORT

Richard DeLong

The GSN Board of Directors held their quarterly meeting on February 11th, and all Board members were in attendance. As reported in the previous Board article, at the request of the Executive Committee and based on concerns expressed by some of GSN's Chapter leaders and members, the Board continued the discussions on the status of dues for GSN in general and specifically GSN Chapters. Discussions quickly moved to the concept that there should be a flat, or single, dues structure. There was agreement amongst the Board members that the dues amount should be \$35.00 per year for members, which is based on the amount the Chapter members now pay. The issue of governance was then discussed.

The existing \$5.00 fee is used to determine membership in the Chapters, and thus who may vote on the leadership and direction of the Chapters. It was agreed the membership form should have boxes that may be checked to signify a member's primary affiliation for one of the Chapters or just GSN as a whole. The Board discussed the fact that this agreement requires a change to the By-Laws, which is to be initiated by the Executive Committee. Therefore, the Board did not vote on the recommendation, because the Board vote would only be on the changed language of the By-Laws, as approved by the Executive Committee.

The various committees then provided reports to the Board. The Nominating Committee reported the committee has identified individuals to serve on the Executive Committee next year. For the two positions on the Board that need to be filled The Nominating Committee was still identifying individuals. The Policy Committee distributed draft Board policies for review by the Board.

The Fiscal Committee reviewed the December 2005 financial statements prepared by Cami Prenn, the GSN Treasurer. The Fiscal Committee was given direction to develop information to look at the GSN budget and income/costs by function rather than category. The Board discussed the need to develop a five-year budget. The Fiscal Committee will come back to the Board next meeting with some ideas. The Fiscal Committee is getting ready to review the GSN Budget and Operating Plan for 2006-2007. The Chapters need to have their budgets to Cami Prenn by April 1, 2006. The Audit Committee did not have a report.

The Symposium Committee continues to negotiate with the Nugget on the contract for the 2010 Symposium. The Board discussions focused on the freedom or autonomy of the symposium organizing committees. Some Board members stated the organizing committee should be given the authority to operate without oversight because the symposia tend to take on lives of their own. Other members stated the organizing committees should operate within an approved budget and with the oversight of the Board because the Board is ultimately responsible for the GSN and should have some level of management over the pri-

mary income source of the organization. There was no resolution of the issues and discussions will continue at future Board meetings.

The Foundation Committee reported on the Foundation Board meeting on February 10, 2006 and reviewed the financial condition of the Foundation. Approximately \$77K has been raised for the endowment. The goal remains at \$250K. Discussion by the Board focused on how the Foundation management was functioning. Those members of the Board that are also on the Foundation Board agreed that the current structure of the Foundation management is not working and needs to be changed. The Foundation Committee agreed to work on that change.

The next meeting will be Saturday, May 13, 2006 in Reno. The Board would appreciate input from the Members of GSN on any of the issues under consideration by the Board.

WINNEMUCCA CHAPTER APRIL 12TH (Wednesday) MEETING

Exploration and Production History for the Bald Mountain District, White Pine County, Nevada

Tim Thompson, Bald Mountain Mine

ABSTRACT

The Bald Mountain district is located in northwestern White Pine County, Nevada, approximately 70 miles south of Elko and 100 miles northwest of Ely. Several deposits have been discovered, developed and mined since Bald Mountain Mine started exploration in 1976, as well as through the efforts of other operators in those same years. In 1993, Bald Mountain Mine consolidated the district and has been conducting exploration and development activities throughout the district since that time.

Mining is currently focused in Stage 7 of Top Pit. The Top deposit started production in 1983 and has been in production during different periods since that time. The characteristics of Top Pit will be presented along with discussion of other deposits mined across the district through the years.

*Thank you to our
generous donors*

Student Dinner Fund

Del Flint
Bob Horton



ATTENTION GOLFERS!!



The GSN annual golf tournament is scheduled for Saturday, July 15 at Washoe County Golf course. A 1:00 PM shotgun start is planned, with a barbeque to follow. **Eklund Drilling** has once again generously offered to sponsor the event, and as in 2005, *there will be no charge for the golf and the barbeque this year, as Lance has agreed to cover all costs!!* We can accommodate only 144 golfers, so sign up early!! Deadline for registration is July 7. You may call (775-323-3500), fax (775-323-3599) or e-mail (gsn@mines.unr.edu) Laura at the GSN office to sign up, individually, or as a foursome. Please provide the following information for each golfer.

Registration Form

Name: _____ Ave. score: _____

Address: _____

Phone: _____ E-mail: _____

Teamed with: _____

BBQ Guest Name(s): _____

SPONSORED BY EKLUND DRILLING COMPANY, INC.



GSN MEMBERS' PERSONAL NOTES & NEWS

Career Related Moves

► **Dave Caldwell** has joined the management team of Golden Phoenix Minerals, Inc as its new President and Chief Operating Officer. He has served as a Director of Golden Phoenix since that company's founding in 1997, and will continue in that role as the company brings its Ashdown moly mine into production later this spring. Prior to accepting the positions at Golden Phoenix, Dave was Chief Geologist for Nevada Pacific Gold in Elko, Nevada, which he co-founded with GSN Members Curt Everson and Steve Brown and two Canadian-based partners in 1997. Dave is a past President (Elko Chapter) and current Director of the GSN and a Trustee for the Northwest Mining Association. He can be reached at 775/853-4919 or dcaldwell@golden-phoenix.com.

► **Bret Koehler** has joined the Department of Conservation's California Geological Survey Strong Motion Instrumentation Program as Engineering Geologist.

Koehler will be working with the Earthquake Engineering Program where he will locate candidate ground-response sites for the installation of strong-motion instruments. He will perform site-specific surface and subsurface geologic investigations and analyses related to strong-motion ground response studies and participate in planning of new downhole geotechnical arrays.

► The Mackay School of Earth Sciences and Engineering welcomes **Connie Parratt** as our new Assistant Director of Development. Connie will be working on a variety of projects for Mackay, including updating our alumni database. If you are a Mackay grad and would like to be kept in the loop as to what's happening at your alma mater, please contact Connie at 775/784-6987 ext. 233 or email her at cparratt@unr.edu.

Members are encouraged to keep us informed about their own career related moves and awards, and deaths of GSN colleagues. Your information needs to be received by Laura at gsn@mines.unr.edu by the 21st of each month.

ELKO CHAPTER APRIL 20TH MEETING

Exploration Strategies, and Techniques as well as Structural Systematics, Geometries, and Occurrence of Selected Gold Belts from the Great Basin and Abroad: Implications for Long Term Assessment of Predictive Methods for Exploration and Development

Raul Madrid, Victoria Resource Corporation

ABSTRACT

I have been lucky to map in detail as well as in reconnaissance many gold deposits within a number of gold belts throughout the world. While I cannot talk exhaustively about each gold belt we mapped, all belts were found to have formed under similar conditions, and exhibit similar structural systematics and therefore similar geometries despite the huge distances and timing that separate them. Using certain methods herein discussed schematically, these features have been used to provide semi-predictive exploration techniques that have proven to be relatively successful in defining bodies with high potential for gold concentrations. I will detail some of these gold systems from abroad and from Nevada to highlight some of their common features which have allowed a more definitive and more systematic and predictive approach to drilling these systems. This has led to formulation of certain exploration strategies in terms of the utilization, or exclusion, of mapping criteria and drilling approaches to more confidently define the geometries of gold concentrations in these systems. Examples of these strategies applied to Colombian and Nevada gold exploration show that structural tabular and intersection zones are responsible for most of, or most of the significant transport and deposition of gold in these systems. Structural intersection zones in particular have similar if not identical geometries and penetrate to great depths, and were the major conduits for gold transport. Gold transport is effectuated mostly by dynamic movement of fluids driven by small changes in temperature. Knowledge of this has significant implications for the structural frameworks in which these deposits occur, and the structural conduits needed for their concentration.

Exploration of these gold belts in the future must utilize the application of structural methods and, in particular, structural systematics to define these significant depths so that more cost efficient mapping and drilling can be applied to our exploration efforts. Efforts to mine these deeper gold systems will be less difficult if predictive exploration methods can be better refined and applied. The current, more widely applied exploration methods utilized by most companies must change to fit better with structural analytical techniques that will lead to these predictive methods. Structural gold belts have the potential to replace the 1.5 billion ounces produced by the Witswatersrand in just over 100 years. The gold contents per unit mile of these belts is increasing and although now still confined to 10's of millions of ounces locally within these belts, current data support

100's of millions of gold exploitation in the future along with them. The main requirements for this future exploitation are deeper exploratory efforts and more cost-effective drilling planning and application.

PDAC EXHIBIT A SUCCESS

Ellie Leavitt, *GSN Vice President*

The GSN booth at this year's PDAC (Prospectors & Developers Association of Canada) International Convention, Trade Show & Investors Exchange (3/5-3/8) received a great response from volunteers and attendees. Renewed interest in Nevada and its mineral resources is refreshing and expected to continue, at least into the near future. As the only Nevada organization present, we did our best to encourage awareness of GSN and what it has to offer, as well as some of the other excellent statewide agencies. Our booth was located somewhat off the beaten track, across from the Mongolia and Arizona booths on the trade show side of things, where we managed to draw a good crowd of both familiar and unfamiliar faces. The success of



Ellie Davie Leavitt and Elizabeth Zbinden

our booth would not have been possible without the guidance of Elizabeth Zbinden and Ruth Carraher (GSN publications co-chairs and seasoned booth sitters), and the many volunteers staffing the booth and transporting publications (see list below)! Volunteers included Nevada and at-large (Arizona, Colorado, Idaho, Montana, etc.) members, making the booth a great place for meeting and catching up with other members, as well as greeting the crowd. Many thanks for your help and hope to see you there next year!

Earl Abbott
Doug Bowden
Kel Buchanan
Jon Carpenter
Ruth Carraher
Bob Hatch
Mike Johnson
Dieter Krewedl
Daniel Laux
Ellie Leavitt

Jim Leavitt
Peter Maciulaitis
Bob McGowan
Dave Shaddrick
Eric Struhsacker
Kaitlin Sweet
Bob Thomas
Clancy Wendt
Nancy Wolverson
Elizabeth Zbinden

GSN SKI DAY – GOOD FOOD AND GREAT SKIING!

Ellie Leavitt, *GSN Vice President*

GSN's second annual Ski Day, held on the last day of Winter 2006, drew a moderate crowd, with several alumni of the first Ski Day sidelined due to injuries. The snow was excellent, though skiing members were scattered afar (next year – flagging!). As one would expect with a small crowd of cats, we skied in dispersed groups until chow time when we gathered in the upper parking lot at Mt. Rose. Laura and Eric Ruud provided their amazingly organized tailgate BBQ with burgers, hotdogs, and all the fixin's, with beverages compliments of Inspectorate. This was followed by an outstanding gourmet dessert of bread pudding with hot caramelized whiskey sauce that could have been the sole reason for heading up to somewhat variable weather and temperature conditions. Phyllis Brock outdid herself with this fantastic contribution. Not able to comment on the ski techniques of most of you cats this year, Bob Cuffney did show the younger generation that some still have it (???) as Paul "Midasburger" was led through every glade and pile of deep snow available. Peter Clarke, his first time on skis this



"Zoom Zoom" Cuffney, Peter "Speedy" Clarke, Lew "Flash" Gustafson and Dave "Rocket" Williams.

year, led a fast cruiser run down Northwest. Having withstood the challenges of the morning, several of us stayed for "post-dessert and beer" chutes runs. From a "chicken-ok-I'll-follow" perspective, one could appreciate (with wonder and awe) how Bob C. managed to turn from his fully extended, telemark position facing right, to left, and back to right in the narrower routes down the chutes, as it looked like his skis reached from one side of the trail to the other. At any rate, he did employ a few forward rolls, and moving kick turns, all done as gracefully as a ballerina(o?). Our group picture is compliments of Ski Patrol John, taken at great risk to himself perched upon, and all of us below, a gigantic cliff of snow. Next year his German Sheperd, who rides lifts and finds bodies beneath the snow, is invited to the event as well!

GSN Newsletter Monthly Advertising Rates

Business card size (3 1/2 x 2'')	\$ 50.00
Quarter page (3 1/2 x 4 3/4'')	150.00
Half page (4 3/4 x 7 1/2'')	300.00
Classified ads \$10/line (up to business card size)	

For an advertising form, call the GSN office at 775/323-3500 or fax 323-3599. Digital or text ads must be received by the 20th of the month to appear in the following month's newsletter.

Advertising guidelines:

- 1) No more than one 1/2 page ad per company/per issue.
- 2) The GSN Newsletter is published monthly except June and July.
- 3) Placement of ads will be rotated and displayed in the order in which the payment is received.
- 4) Digital ads (exported as EPS, TIFF, PICT, or PDF with preview) and payment **must be received by the 20th of the month** in order to be placed in the following month's Newsletter. (Classifieds need not be camera ready.)
- 5) Depending on response, GSN may have to limit the ads in order to provide opportunity for all.
- 6) The Executive Board reserves the right to reject any ad which it may find inappropriate.

UPCOMING EVENTS

Apr 6 – NEVADA PETROLEUM SOCIETY – Marjorie Chan, Professor & Chair, Dept of Geology and Geophysics, University of Utah. Topic: "Iron geochemistry in the Navajo Sandstone with implications to oil migration and exploration and applications to the Covenant field (Wolverine) in Utah". Austin's Restaurant, 7671 South Virginia Street in Reno, NV. Cocktails at 6:30 pm. Dinner is served at 7:00. The talk immediately follows dinner, 7:45 or 8:00 pm. Reservations are required; please contact Diane Phillips at trailsend@pyramid.net or 775/267-4663.

Apr 7 – MACKAY SEMINARS IN ECONOMIC GEOLOGY – Marjorie Chan, Professor & Chair, Dept of Geology and Geophysics, University of Utah. Talk to be determined. 3:00 pm., Room 353, Laxalt Mineral Research building. Contact Jon Price for more info: jprice@unr.edu.

Apr 21 – MACKAY SEMINARS IN ECONOMIC GEOLOGY – Adam Simon, University of Nevada, Las Vegas - "Experiments in Economic Geology". 3:00 pm., Room 353, Laxalt Mineral Research building. Contact Jon Price for more info: jprice@unr.edu.

May 4 – NEVADA PETROLEUM SOCIETY – Christy Morris, Nevada Division of Minerals. Title: "Nevada Division of Minerals and the Oil & Geothermal Businesses". Austin's Restaurant, 7671 South Virginia Street in Reno, NV. Cocktails at 6:30 pm. Dinner is served at 7:00. The talk immediately follows dinner, 7:45 or 8:00 pm. Reservations are required; please contact Diane Phillips at trailsend@pyramid.net or 775/267-4663.

May 14-16 – SEG 2006 CONFERENCE "Wealth Creation in the Minerals Industry". The Conference Center, Keystone Resort, Colorado. Website: www.seg2006.org.

May 14-17 – CIM CONFERENCE AND EXHIBITION, Vancouver Convention & Exhibition Centre, Vancouver, BC, Canada. For more information, contact Jean-Marc Demers at 514/939-2710 ext. 1314. Email: jmdemers@cim.org, Website: http://www.cim.org

June 8-9 – 21st ANNUAL MINING EXPO, Elko, Nevada. For information contact the Elko Convention & Visitors Authority, 700 Moren Wy, Elko, NV. Ph. 775/738-4091, website: http://www.elkocva.com.

GEOLOGICAL SOCIETY OF NEVADA



gsn@mines.unr.edu • www.gsnv.org
Telephone (775) 323-3500 FAX (775) 323-3599
Post Office Box 13375
Reno NV 89507
USA

NON PROFIT
ORGANIZATION
U.S. POSTAGE
PAID
RENO, NV
PERMIT NO. 931

CONNORS

Connors Drilling LLC

P.O. Box 1167 Montrose, CO 81402

*Diamond Core Drilling • Surface & Underground
Reverse Circulation Drilling • Underground*

for Service or Information Call
(970) 249-3501

WATS: 1-800-922-2673

FAX: (970) 249-3701