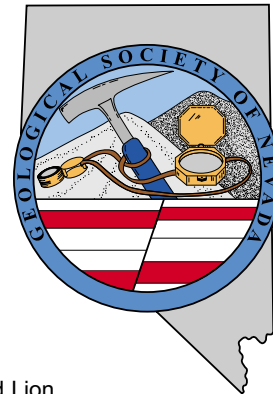


# GSN NEWSLETTER



April 2005, Vol. 20, No. 4

## PRESIDENT

Dieter Krewedl  
Krewedl Mineral Exploration  
dkrewedl@usamedia.tv

## VICE PRESIDENT

Ellie Davie Leavitt  
Consultant  
zoracdavie@aol.com

## SECRETARY

Leslie Olmstead  
Agnico-Eagle (USA) Limited  
l olmstead@nevadacontact.com

## TREASURER

Camille Prenn  
Mine Development Associates  
cami@mda.com

## MEMBERSHIP CO-CHAIRS

Greg McN. French  
Consulting Geologist  
GMcNFrench@aol.com

## Dave Shaddrick

Golden Odyssey Mining, Inc.  
Dshaddrick@aol.com

## PUBLICATION CO-CHAIRS

Elizabeth A. Zbinden  
Round Mountain Gold Corp.  
E\_Zbinden@geology.reno.nv.us

## Ruth Carraher

C&M Consultants  
RACarraher@aol.com

## OFFICE MANAGER

Andrea Robinson  
gsn@mines.unr.edu

## CALENDAR OF GSN EVENTS

- Apr. 6<sup>th</sup> Wednesday** WINNEMUCCA CHAPTER MEETING: Humboldt Room at the Red Lion  
Speaker: Speaker: Jim Essman, Newmont Mining Corporation, "Geology and Mineralization of the Emigrant Deposit Southwest Elko County, Nevada." Social at 6:30 pm, talk at 7:00 pm. Please contact Fred Breit at 775/635-4979 or fred.breit@newmont.com. See page 4 for abstract.
- Apr. 15<sup>th</sup> Friday** GSN MEMBERSHIP MEETING: Reno Elks Lodge, Reno, NV. Speaker: Dave Harvey, Chief Geologist, Round Mountain Gold Corp., "Geology of Gold Hill, Nye County, Nevada." Social hour at 6 pm, dinner at 7 pm, and talk at 8 pm. Contact Andrea Robinson at 775/323-3500 or gsn@mines.unr.edu.
- Apr. 21<sup>st</sup> Thursday** ELKO CHAPTER MEETING: Western Folklife Center, Elko, NV. Speaker: Tim Thompson, Chief Geologist, Bald Mountain Mine, "New Exploration Developments at Placer Dome's Bald Mountain Mine." Refreshments at 6:30 pm, presentation at 7:30 pm. Contact Stacy Saari at 775/778-2679 or stacysaari@newmont.com for more information. See page 4 for abstract.
- Apr. 28<sup>th</sup> Thursday** SOUTHERN NEVADA CHAPTER MEETING: Room 102, Lily Fong Geoscience Building, UNLV, Las Vegas, NV. Speaker: Otto Holmquist, Geolines, LLC, "Tracing Faults and Fissures in the Las Vegas Valley Using Seismic Refraction Methods with Physical Verification." Social with food and drink at 5:30 pm, talk at 6:30 pm. Contact Melissa Hicks at 702/895-1162 or hicksm@unlv.nevada.edu. See page 5 for abstract.
- May 11-21<sup>st</sup>** GSN Symposium "Window to the World" with pre- and post-field trips. See pages 2, 8 and 9.
- June 18<sup>th</sup>** GSN GOLF TOURNAMENT: Washoe County Golf course. See page 2 for details.

**GSN Newsletter is published monthly except June and July**

Geological Society of Nevada, PO Box 13375, Reno, NV 89507 USA, 775/323-3500, www.gsnv.org  
Office location: Laxalt Mineral Research Center, Rm 266, UNR. Hours: Mon thru Fri, 1:30-4:30 pm

## FROM THE PRESIDENT

Dieter Krewedl, *GSN President 2004-2005*

Even though Geoff Blewitt's presentation during the March GSN membership meeting was not our normal tons and grade type of talk, it proved to be very interesting. He demonstrated how the use of ultra-precise GPS can measure changes in the earth's surface that are less than 1 millimeter. These exact measurements are used as supporting evidence for magmatic intrusion into the lower crust and changes in sea level due to the melting of the ice sheets. Thanks Geoff for a thought provoking presentation.

Interest in the GSN 2005 Symposium in May is gaining momentum. Indications are it will be a major international success with projected attendance currently estimated at over 1,800. Four field trips are full and others are filling quickly. The deadline for registering for the open field trips is May 1. See pages 2, 8 and 9 for information on the status of the Symposium and the field trips. See page 11 for registration form.

The Gold Hill presentation during our April 15 membership meeting should generate a lot of interest. Dave Harvey, Chief Geologist of Round Mountain Gold Corporation, will present the first public discussion on the geology and dis-

covery of Gold Hill deposit, which is located just north of Round Mountain in Nye County, Nevada. The exposed portion of Gold Hill was known for years as an epithermal, hot springs deposit containing thick intervals of laminated sinter and a small gold resource. It was only recently that the Round Mountain Gold Joint Venture discovered the larger,

*continued on page 2*

### APRIL MEETING SPONSOR



**Enviroscientists, Inc.**

*Reliable Service for All Your Environmental Needs*

4600 Kietzke Lane, Suite C1 29, Reno, Nevada 89502  
Phone: (775) 826-8822 Fax: (775) 826-8857

**Richard DeLong**  
President

www.enviroincus.com

**Opal Adams**  
Vice President



## FROM THE PRESIDENT *continued from page 1*

higher grade system down-dropped to the west under pediment cover. Thanks go to **Rich DeLong** and **Opal Adams** of **Enviroscientists** for sponsoring the bar during the April meeting, which will help make the entire evening a fun event.

The April GSN membership meeting will be the last meeting of the 2004-2005 year because of the GSN 2005 Symposium being held in May. However, due of the long summer recess, the GSN executive committee decided to resume the membership meetings in September, one month earlier than is customary.

Also, the election of GSN officers for 2005-2006 has been moved up to the April meeting due to the cancellation of the May meeting. The proposed list of GSN officers and Foundation directors is included in the Newsletter.

On a final note, the GSN annual golf tournament is being organized by Bob Felder and is scheduled for Saturday, June 18<sup>th</sup> at the Washoe County golf course. Eklund Drilling has agreed to cover all of the costs for the golf and the barbeque this year. Only 144 golfers can be accommodated so sign up now. Please complete and submit the form below.

## ATTENTION GOLFERS!!



The GSN annual golf tournament is scheduled for Saturday, June 18 at Washoe County Golf course. A 1:00 PM shotgun start is planned, with a barbeque to follow. **Eklund Drilling** has generously offered to sponsor the event, and Bob Felder has agreed to organize the activities. **There will be no charge for the golf and the barbeque this year, as Lance has agreed to cover all costs!!** We can accommodate only 144 golfers, so sign up early. Deadline for registration is June 3 and **there will be no late entries.** You may call (775/323-3500), fax (775/323-3599) or e-mail (gsn@mines.unr.edu) Andrea at the GSN office to sign up, individually, or as a foursome. Please provide the following information for each golfer.

### REGISTRATION FORM

Name: \_\_\_\_\_ Ave. score: \_\_\_\_\_

Address: \_\_\_\_\_

Phone: \_\_\_\_\_ E-mail: \_\_\_\_\_

Teamed with: \_\_\_\_\_

BBQ Guest Name(s): \_\_\_\_\_

**SPONSORED BY EKLUND  
DRILLING COMPANY, INC.**



## GSN 2005 SYMPOSIUM "Window to the World"

Eric Ruud, *Co-Chairman, GSN 2005 Symposium*

Spring has arrived and the 2005 field season is just around the corner. The 2005 Symposium is just weeks away. This Symposium is a great way to start off the summer with fresh knowledge for you and your peers. Remind those people who will benefit from this meeting to sign up soon. The projected attendance at this meeting is estimated at 1,800+ exploration and mining related attendees. Some field trips are full and others are filling quickly. There is limited space on these trips. Refer to the website and pages 8 and 9 of this newsletter to see which trips are closed. Cut off date for field trip registration is May 1.

### The current status of the meeting:

- 174 manuscripts have been submitted
  - 112 speakers are in order
- 66 poster presenters are confirmed
  - 15 core shacks are committed
  - 9 Field trips are mapped out
    - 4 Field trips are closed
    - 4 Short courses are ready
- SEG pre-Symposium Forum is arranged
  - The Big Party is being planned
- Items for the Silent Auction are being accepted
  - The Exhibitors Hall is almost full

Some spaces are still available for exhibitors to display their services and products. Only one large booth is still available. Please check the website for the remaining offerings. Once they are filled, there will be no additional booths added. Be prepared for this opportunity! Reserve your booth today!

Please contact Brenda at the GSN Symposium office, 775/355-8388 or bestay@gsn2005.org. Brenda's office is located inside the Gold Summit office on Caughlin Parkway. Don't wait until the last minute to register for the Symposium, Field Trips, Short Courses and Exhibits on the website: [www.gsn2005.org](http://www.gsn2005.org).

See page 11 for a symposium registration form.

**Thanks to GEOTEMPS for hosting the March meeting.**

# *GSN April 15, 2005 Membership Meeting*

---

**Date:** Friday, April 15, 2005

**Time:** Social-6:00, Dinner-7:00, Meeting-8:00

**Reservations:** 775/323-3500; fax 323-3599,  
e-mail gsn@mines.unr.edu

**Deadline:** Reserve by 11 am Thursday, April 14<sup>th</sup>

**Location:** Elks Lodge, 597 Kumle Lane, Reno, NV

**Directions:** Across (W) from the Reno-Sparks Convention Center (S Virginia St), behind the Les Schwab Tire Center

**Speaker/topic:** Dave Harvey, Chief Geologist, Round Mountain Gold Corp. See abstract below.

---

## **GEOLOGY OF GOLD HILL, NYE COUNTY, NEVADA**

David Harvey, Round Mountain Gold Corporation

Gold Hill is an epithermal, low-sulfidation, volcanic-hosted, hot-springs type, precious metal deposit. The deposit is hosted by the Gold Hill Tuff, a rhyodacitic ash flow tuff believed to be part of the Mt Jefferson caldera complex. Thick intervals ([300 ft.) of laminated sinter and silicified volcanoclastic sediment and chalcedonic, pyritic mud unconformably overly the tuff. More than 400 ft. of post-mineral rhyolitic tuff unconformably overlies the sinter. Alluvium blankets much of the deposit. A flow-banded rhyolite intrusive rock underlies the deposit at a depth of >650 ft.

Two distinct styles of mineralization occur: an early silica-pyrite-breccia (Si-py-bx) event with quartz-sericite-pyrite alteration, and a later low-sulfidation epithermal vein system. The early Si-py-bx stage consists of west-northwest-trending, steeply dipping, irregularly shaped breccia zones surrounded by pyrite vein stockwork. The stockwork zone grades laterally to widely spaced pyrite veinlets and often contains low-grade gold ore. The principle mineralizing event formed a west-northwest striking and steeply dipping vein system that consists of finely laminated quartz-adularia veins. Gold is most common in chalcedonic and laminated veins. Individual veins typically range from 1 to 6 ft. wide containing variable gold contents from 0.1 to 1 opt.

Mineralogical studies indicate electrum as the only gold-bearing phase with about 50% Au and 50% Ag. Electrum is very fine-grained, from 10 to 50 microns, and typically occurs with pyrite and introduced quartz in silica veins. Acanthite is the most common Ag-bearing mineral. A variety of other Ag-bearing minerals and sulfosalts are tentatively identified; only stephanite, polybasite, and native Ag are confirmed. Precious metal minerals are either intergrown with each other or occur as isolated grains on silicate grain boundaries. Pyrite, with up to 4 wt. % As, and marcasite are present and may be hosts for significant quantities of invisible gold. Other sulfide minerals include sphalerite, arsenopyrite, chalcopyrite, galena, chalcocite, and stromeyerite.

Strong argillic alteration occurs in the upper 100 to 150 ft. and is interpreted to be the weathered steam-heated zone above the paleo-water table. At depth, strong alteration diminishes to narrow selvages around veins. A broader halo of weak argillic and propylitic alteration accompanies some vein zones but overall, alteration is weak. Fine to coarse crystalline adularia is common in many veins, as cavity fillings in vugs and rarely in open pumice.

North to northeast-trending range front faults have cut the system and down-dropped blocks to the west such that the top of the vein system is preserved below alluvial cover to the west while the bottom of the system is exposed to the east. Significant potential exists to expand the resource to the west below pediment cover. Drilling of the pediment block intersected gold grades significantly higher than the average grades of the Gold Hill block. The hydrothermal center of mineralization appears to be located west of Gold Hill where deeper drilling intersected quartz veins with gold values exceeding 1 opt Au suggesting potential for underground development.

---

David Harvey is currently Chief Geologist of Round Mountain Gold Corp. Previous positions were held with Echo Bay Mines at the Round Mountain, Borealis and Cove/McCoy Mines in Nevada and the Kensington Project, Alaska. More recently he held position with Coeur d'Alene Mines as Chief Geologist for the Kensington Project and as Exploration District Manager for the Great Basin. Dave earned a Bachelor of Arts degree in Earth Science from California State University Fullerton in 1980 and a Master of Science degree in Geological Science from University of Texas El Paso in 1985.

---

## **ALL MEMBERS BE AWARE!!!**

The April membership meeting is the last general meeting of the year. The Symposium 2005 is being held during the usual May meeting time. Also, September 15, 2005 will be the first general meeting of the 2005-2006 membership year. Hope to see everyone at the meetings!!!

## **THANK YOU TO VOLUNTEERS**

The GSN wants to thank all of the volunteers whom assisted with the Galena High School Career Day and the Science Fair. Volunteers make this organization work and the GSN appreciates the efforts of those volunteering.



## ACTIVITY UPDATE

Mike Brady, February 2005  
www.activityupdate.com

### NEVADA

Placer Dome Inc. announced that it acquired an option to earn a 60% interest in the Long Peak Property from Staccato Gold Resources Ltd. for \$1,170,000 cash and \$2,550,000 in exploration expenditures over 4 years. Press Release: February 7

Centerra Gold Inc. announced that based on recent drill results at the REN Project, resources aggregate 2,090,000 tons @ 0.384 opt Au indicated and 1,430,000 tons @ 0.372 opt Au inferred. (was 41,300,000 tons @ 0.046 opt Au) 2004 Annual Report

Newmont Mining Corp. announced that a 10,000,000-ton rock-slide occurred on February 6 from a waste dump at the Gold Quarry Mine that partially blocked Route 766 over a distance of roughly 1,300 feet. (reserve = 222,800,000 tons @ 0.044 opt Au proven+probable open pit) Reno Gazette-Journal: February 9

Canyon Resources Corp. announced that it acquired an option to earn a 100% interest in the Hycroft Property from Vista Gold Corp. for \$10,000,000 in cash and shares and \$500,000 in exploration expenditures. (resource = 56,000,000 tons @ 0.018 opt Au) N.M.: January 28

Queenstake Resources Ltd. announced that reserves at the Jerritt Canyon Mine aggregate 3,000,000 tons @ 0.276 opt Au proven+probable. (was 2,563,000 tons @ 0.303 opt Au proven+probable) Press Release: February 4

Queenstake Resources Ltd. announced that based on recent drill results at the Starvation Canyon Project, resources aggregate 577,000 tons @ 0.271 opt Au indicated. (was 1,000,000 tons @ 0.153 opt Au) Press Release: February 4

Victoria Resource Corp. announced that recent drill results at the Mill Canyon Project include 702.9-709 meters @ 0.039 opt Au (RJR-2A); 650.8-655.3 meters @ 0.045 opt Au (RJR-3); 807.7-847.4 meters @ 0.034 opt Au (RJR-3); 718.1-740.4 meters @ 0.046 opt Au (RJR-4) and 786.4-789.4 meters @ 0.097 opt Au (RJR-5). Press Release: February 8

Aberdene Mines Ltd. announced that recent drill results at the New York Canyon Project include 59 meters @ 0.58% Cu and 105 meters @ 0.40% Cu, 0.012% Mo. (resource = 70,000,000 tons @ 0.60% Cu) N.M.: February 4

Canyon Resources Corp. announced that it acquired an option to earn a 100% interest in the Reward Property from private interests for undisclosed terms. (resource = 689,000 tons @ 0.062 opt Au) N.M.: February 4

Gold Summit Corp. announced that recent drill results at the Monte Cristo/Maclean Pit Project include 167.7-175.32 meters @ 0.451 opt Au (MC13); 233.2-234.7 meters @ 0.240 opt Au (MC14); 236.3-237.8 meters @ 0.082 opt Au (MC14); 134.1-135.6 meters @ 0.059 opt Au (MC17); 145-146.5 meters @ 0.041 opt Au (MC17); 196-197 meters @ 0.732 opt Au (MCC12); 197.6-200.9 meters @ 1.382 opt Au (MCC12); 168.4-169.6 meters @ 0.032 opt Au (MCC15); 174.2-175 meters @ 0.208 opt Au (MCC15) and 241.5-243.76 meters @ 1.069 opt Au (MCC16). Press Release: January 5

Romarco Minerals Ltd. announced that it acquired an option to earn a 60% interest in the Pine Grove Property from Toquima Minerals Inc. for \$2,000,000 in exploration expenditures and property payments over 4 years. (resource = 2,500,000 tons @ 0.061 opt Au) N.M.: February 11

Boxxer Gold Co. announced that it acquired an option to earn a 100% interest in 8 ha near its Keystone/Boss Property from private interests for \$40,000 cash over several years. N.M.: February 11

## ELKO CHAPTER APRIL 21<sup>st</sup> MEETING

### Exploration and Production History for the Bald Mountain District, White Pine County, NV

Tim Thompson, Placer Dome US - Bald Mountain Mine

The Bald Mountain district is located in northwestern White Pine County, NV, approximately 70 miles south of Elko and 100 miles northwest of Ely. Several deposits have been discovered, developed and mined since Placer Dome entered the district in 1976, as well as through the efforts of other operators in those same years. In 1993, Placer Dome consolidated the district and has been conducting exploration and development activities since that time.

Mining is currently focused in the Stage 7 of Top Pit. The Top deposit started production in 1983 and has been in production during different periods since that time. The characteristics of the Top Pit will be presented along with a discussion of other deposits mined across the district through the years.

## WINNEMUCCA CHAPTER APRIL 6<sup>th</sup> MEETING

### Geology and Mineralization of the Emigrant Gold Deposit Southwest Elko County, NV

Jim Essman, Newmont Mining Corporation

The Emigrant gold deposit is a low-grade, sedimentary rock-hosted, bulk tonnage Carlin-type deposit located in the Rain subdistrict, northern Pinon Range, NV. Shallow (0-300 ft, 90 m) oxide mineralization is hosted in strongly silicified siltstone of the Mississippian Webb Formation, and variably decalcified and dolomitized limestone of the upper Devonian Devils Gate Formation. The Emigrant deposit was discovered in the 1980s through rock chip sampling and reverse circulation drilling. Current reserves are 69 Mt grading 0.018 ozAu/st (1.2 Moz), the deposit is wholly owned by Newmont Mining Corp. Ag:Au ratios average 3:1. Heap leach recoveries are 58% Au and <10% Ag. Heap leach gold production is anticipated to operate from 2007 to 2012.

## E-MAIL ISSUES

Andrea Robinson has sent out several email announcements and apparently some of you are not getting them. If you are signed up to receive email announcements and think that you are not getting them, send Andrea an email titled "test me". She will reply to it as a test and let you know if it is getting returned. If your emails are getting bounced, check to make sure GSN is not a blocked sender. Also, if you have a firewall, that may be causing a problem, as sometimes the GSN Announcements can look like spam. This is a problem the GSN will not be able to fix.

## SOUTHERN NEVADA CHAPTER APRIL 28<sup>th</sup> MEETING

### Tracing Faults and Fissures in the Las Vegas Valley Using Seismic Refraction Methods with Physical Verification

Otto C. Holmquist, Geolines, LLC

Successful use of surface seismic methods using shear waves to locate earth fissures has been discussed at some length. While obtaining background surface seismic data at an incipient fissure in Arizona, geophysicists noted that the amplitude of compression waves was severely attenuated across the fissure zone. An investigative approach based on the attenuation of first arrival compressional waves was developed to map the subsurface extent of earth fissures. This approach has been used with consistent success in mapping the subsurface extent of fissures, and has recently been used to locate faults in the Las Vegas Valley. The methods have been found to be useful even where relatively shallow cemented zones are present.

Exploration test pits, or short trenches, are excavated at the seismic line locations to verify the identification of subsurface fissures and trenches. This process generally streamlines the field location effort and allows more time, effort (and money) to be concentrated on the identification and exploration of the earth rupture itself. This presentation will present the fundamentals of the investigative approach and recent case studies in the Las Vegas Valley.

Otto C. Holmquist, P.E. received his Bachelor's Degree in Geological Engineering from the New Mexico Institute of Mining and Technology (the New Mexico School of Mines) in 1981. After brief stints with Schlumberger Well Services (in the great oil bust) and the New Mexico State Highway Department, Mr. Holmquist joined the geotechnical engineering and environmental consulting community with Sergent, Hauskins and Beckwith Consulting Engineers (a.k.a. AGRA Earth and Environmental and later, AMEC Earth and Environmental) in 1985. His experience ranges from providing geotechnical site characterization and recommendations for residential, commercial and industrial development in the southwestern United States to preparing a Remedial Investigation/Feasibility Study (RI/FS) at an EPA Superfund site the Salt River Valley in Arizona.

Otto joined a local geotechnical engineering firm in Las Vegas in September, 2001 and began the operation of Geolines, LLC here in January, 2004. His company provides consulting services to engineers in the Valley, including refraction microtremor measurements and applications of seismic-refraction methods to enhance subsurface site characterization for engineering evaluation.

## SILENT AUCTION

The GSN Education Committee is seeking donations for our silent auction during the "Big Party" at the 2005 Symposium. We anticipate over 1500 participants at this event and hope to raise a stellar amount for our educational programs. We would especially appreciate quality mineral specimens, mineral jewelry, framed art, books, geological equipment and drafting supplies, or any other items that would appeal to the GSN crowd. Please contact D.D. LaPointe at 784-6691 ext. 134 or Rachel Dolbier at 784-4528 to arrange pick-up in the Reno area.

Hope to see you at the Big Party!

## SPECIAL THANKS TO THIS YEAR'S SPEAKERS

The GSN thanks the speakers of the August 2004-April 2005 Membership year. The talks were excellent and provided the members with a wide variety of topics.

**August**—*Doug Silver*, How to Grab the Brass Ring: An Update on the World

**October**—*Leroy Schutz*, Geologists Add Value at Newmont's Nevada Gold Mines

**November**—*R.W. Leonardson*, Back to Basics at Goldstrike

**December**—*Jim Gibbons*, U.S. House of Representative

**January**—*Alan Branham*, Midway Project, Nye County, Nevada: High-Grade Gold Under Sand Dunes

**February**—*Scott Manske*, How to Shoot an Elephant: A Brief History of Exploration and Discovery in the Superior, Arizona District from 1991-1998

**March**—*Geoff Blewitt*, How to Catch Geology in Action Using GPS

**April**—*Dave Harvey*, Geology of Gold Hill, Nye County, Nevada

## SLATE OF NOMINEES FOR 2005– 2006 GSN EXECUTIVE COMMITTEE

The nominating committee is pleased to present the following slate of nominees for GSN officers, committee chairs, and GSN Foundation directors. Nominations will officially be closed at the April 15 general membership meeting and the election will take place at that time.

Nominations for GSN officers and committee chairs:

*President*, Dieter Krewed

*Vice President*, Ellie Leavitt

*Treasurer*, Cami Prens

*Secretary*, Leslie Olmstead

*Membership Co-Chairs*, Greg French and Dave Shaddrick

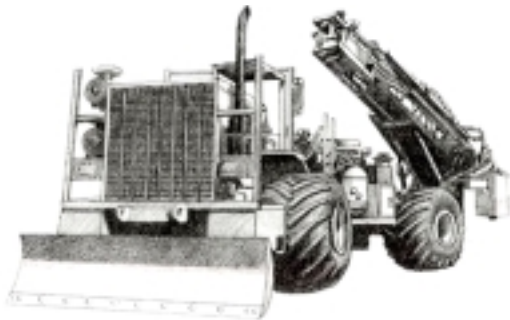
*Publications Co-Chairs*, Elizabeth Zbinden and Ruth Carraher

*Education Co-Chairs*, D.D. LaPointe and Rachael Dolbier

**VISIT THE GSN WEBSITE AT:  
[www.gsnv.org](http://www.gsnv.org)**



## Diversified Drilling LLC



*Providing drilling services to the mining/  
metals industry since 1980*

3650 Grant Creek Road  
Missoula, Montana 59808  
(406) 542-1010 Fax (406) 542-5065  
Formerly Dateline Drilling, Inc.

## WE CAN HELP!

- Environmental and exploration support services
- Celebrating 40 years of service to the mining industry
- Experience in Mexico / Canada / Alaska



NORTH AMERICAN EXPLORATION INC.  
NORTH AMERICAN MINE SERVICES INC.  
GEOLOGY | GEOPHYSICS | GEOCHEMISTRY  
HYDROLOGY | ENVIRONMENTAL SERVICES

447 North 300 West, Ste. 3 • Kaysville, Utah 84037 • Phone (801) 546-6453 Fax (801) 544-4554  
nae@nae-xploration.com

## MINERAL EXPLORATION SERVICES

SOIL SAMPLING  
CLAIMSTAKING  
PROPERTY EVALUATION  
MINE HAZARD FENCING

5655 Riggins Ct., #15, Reno, NV 89502  
Tel: (775) 954-1082 Fax: (775) 829-6882  
email: day@mineralexploration.com

## SKI DAY — APRIL 2<sup>ND</sup>

For all of you snow lovers, Mt. Rose has received a blanket of legendary snow and beckons all skiers and snow boarders to its slopes. We never know what the weather will be like, but last weekend was awesome!!

Come to the Mountain for a day of skiing on Saturday, April 2<sup>nd</sup>. If there are more than 20 people skiing, a group rate can be had, as well as discounts on rental equipment. Meet in the upper parking lot of Mt. Rose. Bring a side dish or main dish. Some basic food groups will be provided, as well as some drinks, tables, chairs and a grill or two. Lunch will be from around 11:30 to 1:00.

If anyone needs lessons, contact Eric Ruud, 775/626-7474 or 775/843-3424, and he can arrange something. If there are any questions about logistics, contact Eric as well. Although this is a non GSN sponsored event, we hope many of you outdoor skiing enthusiasts take advantage of the epic snow conditions.

Remember Mt. Rose is expected to close April 17<sup>th</sup>.

## DISCOUNTS

### Enterprise Car Rental

Enterprise car rental offers a 10% discount to all GSN members. If you need to rent a car or van, just let them know you are eligible for the 10% discount.

**ALS Chemex**  
beyond expectations

**reno**  
tel: 775-356-5395

**elko**  
tel: 775-738-2054

**winnemucca**  
tel: 775-625-4192

for other locations around  
the world visit  
[www.alschemex.com](http://www.alschemex.com)



ALS Chemex

[www.alschemex.com](http://www.alschemex.com)

**NEW!**

ALS Chemex has opened a facility in Winnemucca to better serve our Nevada clients.



Jo Beth Allen  
Professional Graphics

CAD Drafting/Digitizing/Scanning  
High Resolution Presentation Graphics  
Plotting/Printing  
Geologist

1055 Joshua Drive  
Reno, Nevada 89509

Phone: 775-324-7960  
Fax: 775-324-7583

jobeth@yellowsb.net

Petrographic and Ore Microscopy Services

for applications in the following areas:

- Base and Precious Metals
- Mineral Exploration
- Process Mineralogy
- Industrial Minerals
- Geological Mapping
- Forensic Geology



P.O. Box 10080  
American Canyon, CA 94503  
Phone: 707-553-2772  
E-Mail: sfmicro@earthlink.net

Schurer & Fuchs



Enviroscientists, Inc.

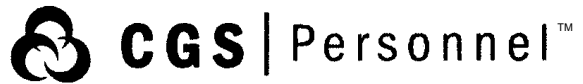
Reliable Service for All Your Environmental Needs

4600 Kietzke Lane, Suite C129, Reno, Nevada 89502  
Phone: (775) 826-8822 Fax: (775) 826-8857

Richard DeLong  
President

www.enviroincus.com

Opal Adams  
Vice President



DIXIE BULLOCK  
DISTRICT MANAGER

WILMA HATTER  
SERVICE REPRESENTATIVE  
HATTERW@SOSSTAFFING.COM

412 NORTH MCCARRAN BLVD.  
SPARKS, NV 89431  
T. 775.331.5227 F. 775.323.7772  
WWW.SOSSTAFFING.COM

A Division of SOS Staffing Services, Inc.

sample Bags

HUGE INVENTORY LOW, LOW PRICES



**NEW ADDRESS!**  
**LEGEND, INC.**

988 Packer Way  
Sparks, NV 89431

Off Glendale east of McCarran  
phone: (775) 786-3003  
fax: 786-3613  
www.Lmine.com  
email: info@Lmine.com



Carlin Trend Mining  
Supplies & Service

369 5th St., Elko, NV 89801  
(775) 778-0668, Fax: (775) 778-0687, carlintrend@frontiernet.net

Geological Consulting - Claim Staking - Soil Sampling  
Mineral Surveys - Mine Hazard Fencing  
Geology & Drafting Supplies - AutoCad & GIS  
Temporary Employees in All Fields

Fire Assay  
ICP - OES  
ICP - MS  
AAS  
Custom Preparation  
Bullion Analyses  
BLEG

**Corporate Office**  
1500 Glendale Avenue  
Sparks, NV U.S.A. 89431-5902  
Telephone (775) 356-0606  
Fax (775) 356-1413

**Elko Office**  
2320 Last Chance Road  
Elko, NV U.S.A. 89801-4852  
Telephone/Fax (775) 738-9100

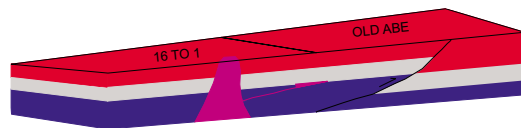
E-mail: AALADMIN@aallabs.net  
Website: www.aallabs.com

**American  
Assay &  
Environmental  
Laboratories**



G.I.S. Land Services

Greg Ekins M.S. R.L.P. #32306 President  
Mineral Landman - Computer Draftsman  
"From Courthouse Records to Final Map"



Surface Title  
Mineral Title

AutoCad - ArcView - Mapinfo  
Geologic, GeoChem and Land Status Maps  
www.gislandservices.com

E: greg@gislandservices.com  
P: 775-746-8803 F: 775-746-8802

6635 Broadridge Ct.  
Reno, NV 89523

# Geological Society of Nevada—Window to the World—May 11 - 21



## SYMPOSIUM 2005 FIELD TRIPS

### FIELD TRIP DESCRIPTIONS

The 2005 Symposium Precious Metal Field trips will focus on a variety of known precious metal systems and new precious metal discoveries in the Great Basin of Nevada. These will include disseminated, sediment-hosted (Carlin-type) and vein-type, volcanic-hosted (Midas-type) as well as less well-known types of precious metal deposits. Emphasis will be placed on the genesis of precious metal deposits by examining the geological, geochemical, and geophysical signatures of entire mineral systems from the peripheral footprints to the deposits themselves. New exploration targets in Nevada, the most prolific precious metal province in North America, will be featured to illustrate the remaining potential of one of the hottest exploration areas in the world. All field trips are limited to a maximum of 40 participants each.

You will receive one field trip guidebook with your registration. Other field trip guidebooks can be reserved prior to publication for \$45.00 each from the GSN office (775/323-3500, gsn@mines.unr.edu). Your reserved guidebooks will be available at the Symposium 2005 Registration.

**Cut off date is May 1<sup>st</sup> for all field trip registration.**

### PRE-SYMPOSIUM FIELD TRIPS May 10 to May 13, 2005

**CLOSED FT-01.** Geology and Structural Controls of the Precious Metal Deposits of the Walker Lane and South-Central Nevada.

*Coordinator:* Tom Callicrate.

*Field Trip Leaders:* Eric Lauha, Tim Master, Dave Harvey, Terry Jennings, Alan Branham and Robert Bennett.

*Pre-Symposium Trip:* May 11-13, 2005.

*Description:* Three day field trip to examine a variety of ore deposit type systems in this portion of south-central Nevada. Deposits to be visited include: Carlin-type sediment hosted system (Northumberland); volcanic-hosted hot springs related gold system (Gold Hill); low-sulfidation, quartz-adularia disseminated and fracture controlled volcanic and sediment-hosted gold system (Round Mtn.); sedimentary-hosted, low sulfidation vein system (Gold Wedge Deposit) in the Manhattan District; low-sulfidation, quartz-adularia stockwork gold system (Midway) and the volcanic-hosted, high-sulfidation gold deposits (Goldfields District). Emphasis will be placed on geology and regional and local structural ore controls.

**CLOSED FT-03.** An update on the Northeast Nevada Eocene Paleogeography, Volcanic Succession, and the Depth of Formation of Sediment-Hosted Gold Deposits of the Northern Carlin Trend, Nevada.

*Coordinator:* Al Lander.

*Field Trip Leaders:* Al Lander (Main Trip Leader-Coordinator), Dick Tosdale, Ken Hickey, Steve Moore and Wayne Trudel.

*Pre-Symposium Trip:* May 11-13, 2005.

*Description:* A three day field trip will begin in the Ruby Mountains with several stops along the way to the Northern Carlin trend

culminating with visits to the Gold Quarry and Goldstrike mines. The trip will focus on the Eocene paleogeographic setting in Northeast Nevada and its significance in the formation of the world class gold deposits such as Gold Quarry and Goldstrike. The trip will introduce the information from a recently completed multi year research project with a tour of two of the largest sediment hosted deposits in North America. Participants will take away a better understanding of the unique geologic setting of the Carlin Trend and the factors that led to the deposition of +100 million ounces of gold.

**FT-04.** Sediment-Hosted Gold Deposits of the Getchell District, Nevada.

*Coordinator:* Vic Chevillon.

*Field Trip Leaders:* John Porterfield (Placer Dome) and Lloyd Evers (Newmont).

*Pre-Symposium Trip:* May 11-13, 2005.

*Description:* Three day field trip to the gold deposits of the Getchell Trend. Deposits to be examined will include Getchell-Turquoise Ridge, Twin Creeks and Pinson deposits. The focus of this field trip will be to compare this district with the Carlin deposits with regards to ore controls and discovery characteristics. Evening presentations by exploration geologists involved in past discoveries will be a highlight.

### POST-SYMPOSIUM FIELD TRIPS May 19 to May 22, 2005

**CLOSED FT-05.** Low Sulfidation Vein Systems in the Northern Nevada Rift, Nevada.

*Coordinator:* Greg Maynard.

*Field Trip Leaders:* Rick Streiff, Keith Blair, and Scott Price.

*Post-Symposium Trip:* May 19-21, 2005.

*Description:* Three day field trip to bonanza type veins systems, which shall include Midas, Ivanhoe, and Sleeper Deposits. Emphasis of the field trip will be to better understand the geology, geochemistry and ore control characteristics of these low-sulfidation vein systems for future use in developing exploration methods for discovering similar deposits in the Great Basin.

**FT-06.** Geology and Mineralization of Sediment-Hosted Gold Deposits of the Southern Carlin Trend, Nevada.

*Coordinator:* Tim Thompson and Tim Master.

*Field Trip Leaders:* Tim Master, Don Harris, Wayne Trudel and Tim Thompson.

*Post-Symposium Trip:* May 19-21, 2005.

*Description:* Three day field trip examining gold deposits of the southern Carlin Trend. The field trip will focus on structural and ore controls of the Emigrant, Railroad-Pinion and Bald Mtn. deposits. At Emigrant, participants will examine the Devils Gate Limestone, Webb Siltstone, and Chainman Formations and structural controls for this large, disseminated gold deposit (1.2 M oz). Discussions will also cover current project status, and future exploration in the area. The Bald Mountain visit will include structural and stratigraphic controls, emphasizing the variable nature of the deposits across the greater district. Discussions will cover evidence and lack of evidence for a connection to the Bullion and Bald Mountain intrusions and the concept targets that may exist based on the geology and geophysical evidence. Also the methods companies are using in



their search for discovering these deposits and additional satellite deposits will be discussed.

**CLOSED FT-07.** Sediment-Hosted Gold Deposits of the north-central Eureka-Battle Mountain Trend, Nevada.

*Coordinator:* Eric Saderholm.

*Field Trip Leaders:* Eric Saderholm, Bob Hayes, Douglas McGibbon, and Reed Koefed.

*Post-Symposium Trip:* May 19-21, 2005.

*Description:* Three day field trip to examine some of the most recently discovered gold deposits in Nevada. Deposits to be examined may include Lone Tree, Pipeline, Phoenix, Cortez Hills and Marigold deposits. Emphasis of the field trip will be examining the structural setting, ore controls and lithological host associated units with these deposits.

**FT-08.** Sediment-Hosted Gold Deposits of the Independence Range, Nevada.

*Coordinator:* Earl Abbott.

*Field Trip Leaders:* Mike Jones, Earl Abbott and Stan Keith.

*Post-Symposium Trip:* May 19-21, 2005.

*Description:* Three day field trip to the Jerritt Canyon District examining two or three deposits, as well as a trip to the Big Springs District. Emphasis will be placed on the regional geology and structural setting and other relationships of the two districts in the Independence Range, and the comparison of the Jerritt Canyon District with the Carlin District. Field investigations will focus on host stratigraphy, intrusive rocks, ore controls and new exploration criteria currently being applied by Queenstake Resources and Gateway Gold.

**FT-09.** Porphyry Deposits of the Great Basin.

*Coordinator:* Hans Rasmussen.

*Field Trip Leaders:* Hans Rasmussen, John Dilles (Yerington), and John Jory (Phoenix-Fortitude).

*Post-Symposium Trip:* May 19-21, 2005.

*Description:* This field trip is both educational and hands on it is designed to present the latest information about porphyry Cu, porphyry Cu-Au and porphyry-related Au deposits worldwide, with comparisons to those porphyry systems that exist in the Great Basin. The trip will require three-days, with one day of lecture and two days of field visits. Throughout the lectures and field trips, an emphasis will be placed on evaluating the Great Basin geologic history and porphyry environment, and questioning the potential for additional porphyry systems to be discovered in the Great Basin. The one-day lecture portion has the following contributors: Dr. John Dilles, Rich Lorson, Dr. Jeremy Richards, and Dr. Eric Seedoff with others pending. The field visits will include both Yerington, which is a Jurassic Porphyry Cu system, and the Battle Mountain Complex, including the Phoenix-Fortitude and Copper Basin which are Tertiary Porphyry-related Au-Cu systems. Field trips will emphasize the differences in alteration, structure and composition between the two distinct porphyry districts.

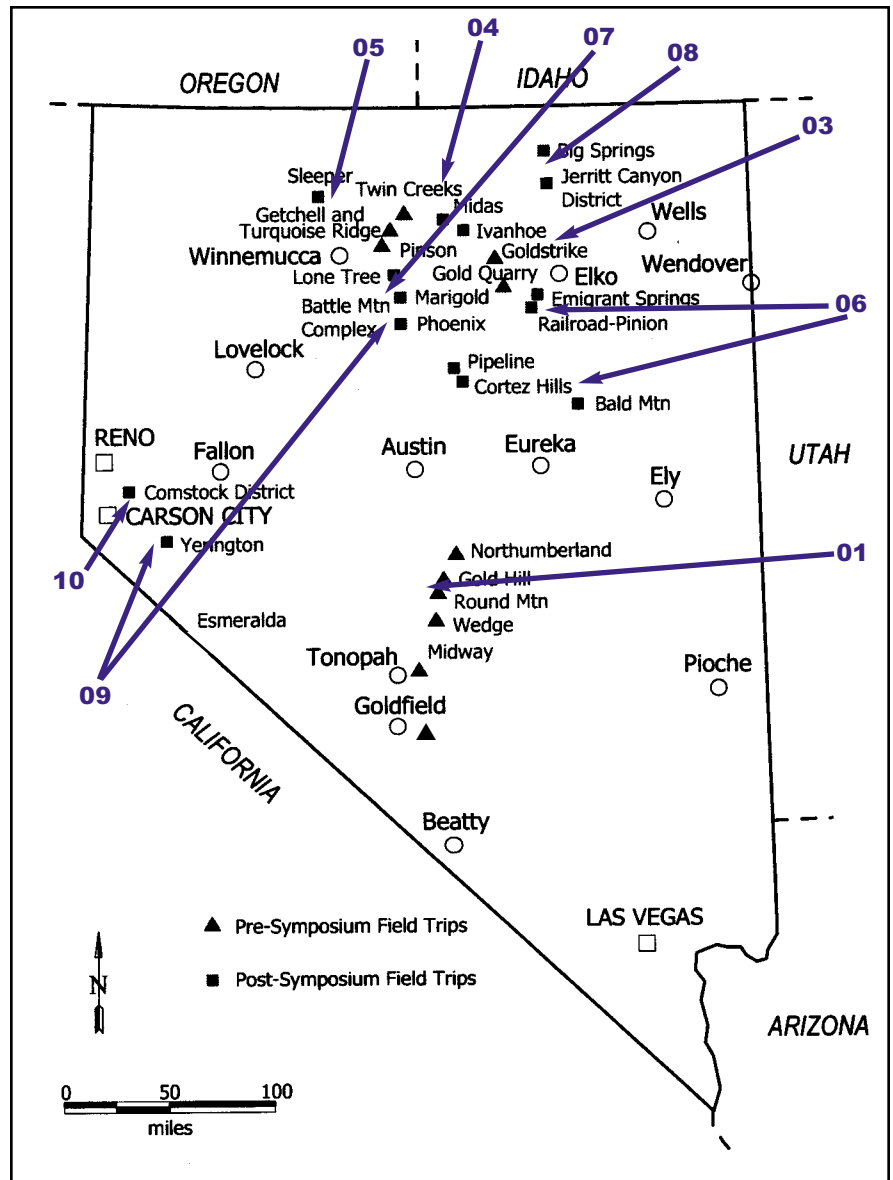
**FT-10.** Geology, Mineralization and Remote Sensing of the Comstock District, Nevada.

*Coordinator:* Richard Bedell.

*Field Trip Leaders:* Richard Bedell and Don Hudson (main leaders) and Greg Vaughn (assistant).

*Post-Symposium Trip:* May 19 and 20, 2005.

*Description:* One-day lecture and one-day field trip examining the Comstock mining district mineralization from a geology, alteration, and remote sensing perspective. This Workshop-Field Trip will have a day lecture on the regional setting, isotopes, alteration (including field spectroscopy), geology and remote sensing of the Comstock District. Numerous sensors have been flown over the District and this will be an excellent example to demonstrate what this plethora of remote sensing instruments can and cannot do. The night will be spent in Virginia City followed by a day in the field. Field stops will be key locations to look at features related to the mineralization and to demonstrate what remote sensing can and cannot do relative to other geologic mapping techniques. In addition the Comstock shows features related to high, intermediate, and low sulfidation. The course will endeavor to seek out key relationships in this complex district that will help to decipher these styles of mineralization in space and time.



## GSN MEMBERS' PERSONAL NOTES & NEWS

### *Awards and Related Items*

► Odin D. Christensen was the recipient of the Ben F. Dickerson Award at this year's SME convention in Salt Lake City in recognition of his professionalism and contributions to the mining industry. Odie is an independent geologist living in Mancos, Colorado. Last year's recipient of the Dickerson award was Clancy Wendt.

Members are encouraged to keep us informed about their own career related moves and awards, and deaths of GSN colleagues. Your information needs to be received by Andrea at [gsn@mines.unr.edu](mailto:gsn@mines.unr.edu) by the 21<sup>st</sup> of each month.

## UPCOMING EVENTS

**Apr. 2<sup>nd</sup>** - 27<sup>th</sup> ANNUAL INTERNATIONAL INTERCOLLEGIATE MINING COMPETITION BANQUET. Silver Legacy, Silver Rooms A & B. Call Cheryl Breland at 775/784-6961 for more information.

**Apr. 7<sup>th</sup>** - NEVADA PETROLEUM SOCIETY MONTHLY DINNER MEETING, Austin's restaurant, 7671 S Virginia St. Speaker: Dave Cramer, BJ Services, "Analyzing Well Performance in Hydraulically Fractured Wells." Cocktails at 6:30 pm and dinner at 7:00 pm. Contact Diane Phillips, 775/267-4663 or [trailsend@pyramid.net](mailto:trailsend@pyramid.net) by May 1 for reservations.

**Apr. 15<sup>th</sup>** - ECONOMIC GEOLOGY SEMINAR, Mackay Science Bldg, Rm 215, UNR, 4:00 pm. Mark Reed, Univ of Oregon, From Magma to Main Stage Veins: Pressure Oscillation, Temperature Decrease, and Hydrothermal Alteration Reactions in the Butte Porphyry Copper System. Jon Price, 775/784-6691, ext 126.

**Apr. 20-22<sup>nd</sup>** - ANNUAL NEVADA STATE GEOGRAPHIC INFORMATION SOCIETY CONFERENCE, John Ascuaga's Nugget Hotel, Reno/Sparks, NV. Visit [www.ngis.org/conf](http://www.ngis.org/conf) for more details.

**Apr. 29<sup>th</sup>** - ECONOMIC GEOLOGY SEMINAR, Mackay Science Bldg, Rm 215, UNR, 4:00 pm. Ralph J. Roberts lecture. Speaker and topic to be determined.

**May 12<sup>th</sup>** - NEVADA PETROLEUM SOCIETY MONTHLY DINNER MEETING; Austin's restaurant, 7671 S Virginia St. Speaker: Peter Druschke, 2003 NPS scholarship grantee, "Research on the Tertiary Sheep Pass Formation, An Important Source and Reservoir Rock in Eastern Nevada." Cocktails at 6:30 pm and dinner at 7:00 pm. Contact Diane Phillips, 775/267-4663 or [trailsend@pyramid.net](mailto:trailsend@pyramid.net) by June 1 for reservations.

**May 25-27<sup>th</sup>** - CALIFORNIA MINING ASSOCIATION 2005 ANNUAL CONFERENCE, Resort at Squaw Creek in Olympic Valley, California. Contact Stephanie Pridmore at [spridmore@calmining.org](mailto:spridmore@calmining.org) for more information.

**June 19-22<sup>nd</sup>** - AAPG ANNUAL CONVENTION, Calgary, Alberta, Canada. [www.aapg.org/calgary](http://www.aapg.org/calgary).

**July 11-13<sup>th</sup>** - GLOBAL URANIUM SYMPOSIUM 2005, Casper, WY. Sponsored by the central Wyoming Section of the Soc. for Mining, Metallurgy, and Exploration. For more information on the symposium go to [www.smenet.org/meetings](http://www.smenet.org/meetings).

**Sept. 19-23<sup>rd</sup>** - INTERNATIONAL GEOCHEMICAL EXPLORATION SYMPOSIUM, Perth, Western Australia. Visit the following website for information, [www.promaco.com.au/conference/2005/iges/index.htm](http://www.promaco.com.au/conference/2005/iges/index.htm) and follow the prompts to the IGES meeting.

## The GSN Foundation wishes to thank the following donors:

Thomas (Toby) Mancuso

Robert Morrell

Jamie Pendergast

Kent Thomson

Kenneth L. Zonge

## OPPORTUNITIES TO ADVERTISE AND SPONSOR GSN EVENTS

There are many opportunities to advertise and sponsor events with the GSN. Business cards, 1/4 page and 1/2 page ads can be placed in the newsletter monthly and in the membership directory annually. The membership meetings are also an opportunity to get your company's name out to the members. The 2005-2006 Membership year will have nine months available for sponsorship. Also, the Fall and Spring Field Trips will be taking place and sponsors will be needed for those events as well. If you are interested in any of these events, please contact Andrea Robinson at the GSN office. We expect next year to be as upbeat and active as this year, so get your names in early.

### GSN Newsletter Monthly Advertising Rates

Business card size (3 1/2 x 2'')	\$ 50.00
Quarter page (3 1/2 x 4 3/4'')	150.00
Half page (4 3/4 x 7 1/2'')	300.00
Classified ads \$10/line (up to business card size)	

**For an advertising form, call the GSN office at 775/323-3500 or fax 323-3599. Digital or text ads must be received by the 20<sup>th</sup> of the month to appear in the following month's newsletter.**

Advertising guidelines:

- 1) No more than one 1/2 page ad per company/per issue.
- 2) The GSN Newsletter is published monthly except June and July.
- 3) Placement of ads will be rotated and displayed in the order in which the payment is received.
- 4) Digital ads (exported as EPS, TIFF, PICT, or PDF with preview) and payment **must be received by the 20<sup>th</sup> of the month** in order to be placed in the following month's Newsletter. (Classifieds need not be camera ready.)
- 5) Depending on response, GSN may have to limit the ads in order to provide opportunity for all.
- 6) The Executive Board reserves the right to reject any ad which it may find inappropriate.

REGISTRATION FORM

15 December 2004

Geological Society of Nevada Symposium 2005

Window to the World

John Ascuaga's Nugget Hotel, Sparks, Nevada

(Exhibits and Technical Sessions, May 15-18; Pre- and Post-Meeting Field Trips, Short Courses, and SEG Forum)

Please make checks payable to "GSN 2005" and mail them to GSN 2005, P.O. Box 13375, Reno, NV 89507-3375, USA. Credit card payments (VISA or MasterCard only) can be made on the Web (www.gsn2005.org) or by fax (775-323-3599). For information, see www.gsn2005.org, call 775-355-8388, or e-mail gsnsymp@unr.edu. All registrants are GSN members during the symposium and pre- and post-meeting trips and short courses. Cut off date for open field trips is May 1.

Symposium Registration (Registrants for field trips and short courses must register in one of the following five categories.)

Early, Regular, and On-Site registrants will receive the printed Symposium Volumes by mail after the meeting.)

Early (GSN must receive the registration form by February 28, 2005), \$250 \$ \_\_\_\_\_

Regular (between March 1 and April 30), \$300 \$ \_\_\_\_\_

On-Site and Late (after April 30), \$350 \$ \_\_\_\_\_

Student (must be able to show proof of student status; no Symposium Volumes), \$125 \$ \_\_\_\_\_

Exhibits-Only (may not attend technical sessions and will not receive the Symposium Volumes, but \$ \_\_\_\_\_

have access to the exhibit hall and may attend the Big Party), \$25

Pre-Meeting Field Trips (limited to 40 per trip)

Field Trip 1-Precious Metal Deposits of the Walker Lane and South-Central Nevada (May 11-13), \$375 \$ CLOSED

(Field Trip 2-cancelled)

Field Trip 3-Sediment-Hosted Gold Deposits of the Northern Carlin Trend (May 11-13), \$375 \$ CLOSED

Field Trip 4-Sediment-Hosted Gold Deposits of the Getchell District (May 11-13), \$375 \$ \_\_\_\_\_

Society of Economic Geologists Forum on Controversies on the Origin of World-Class Gold Deposits:

Carlin and Witwatersrand (Saturday, May 14, at John Ascuaga's Nugget Hotel; Symposium Registration \$ \_\_\_\_\_

not required, but encouraged; limit 300 - first come, first served), \$149 (cost for professionals) \$ \_\_\_\_\_

or \$89 (cost for students) \$ \_\_\_\_\_

Keynote Luncheon - Doug Silver (Sunday, May 15, limit 650), \$30 \$ \_\_\_\_\_

Controversies Luncheon - Highlights from the SEG Forum (Monday, May 16, limit 650), \$30 \$ \_\_\_\_\_

Post-Meeting Field Trips (limited to 40 per trip) and Short Courses

Field Trip 5-Low Sulfidation Vein Systems in the Northern Nevada Rift (May 19-21), \$375 \$ CLOSED

Field Trip 6-Sediment-Hosted Gold Deposits of the Southern Carlin Trend (May 19-21), \$375 \$ \_\_\_\_\_

Field Trip 7-Sediment-Hosted Gold Deposits of the Eureka-Battle Mountain Trend (May 19-21), \$375 \$ CLOSED

Field Trip 8-Sediment-Hosted Gold Deposits of the Independence Range (May 19-21), \$375 \$ \_\_\_\_\_

Field Trip 9-Porphyry Deposits of the Great Basin (May 19-21), \$375 \$ \_\_\_\_\_

Field Trip 10-Comstock District (May 19-20, does not include overnight lodging), \$125 \$ \_\_\_\_\_

Short Course 1-Mineral Resource Estimation (May 19, minimum 15, limit 30), \$250 \$ \_\_\_\_\_

Short Course 2-Digital Mapping (May 19-20, minimum 12, limit 20), \$250 \$ \_\_\_\_\_

Short Course 3-Real World Geophysics: A Window into the Ground (May 19, limit 25), \$275/\$100 students \$ \_\_\_\_\_

Short Course 4-Structuring a Mining Deal (May 19-20), \$275/\$150 for students \$ \_\_\_\_\_

Pre-publication order of an extra copy of the Symposium Volumes (estimated to be two hard-bound,

volumes with 1,400 pages, some in color). \$90 if picked up at the GSN office; \$102 if mailed to USA address; \$ \_\_\_\_\_

\$120 if mailed to non-USA address. Lower foreign mailing prices may be available on the Web. \$ \_\_\_\_\_

TOTAL \$ \_\_\_\_\_

YOUR NAME \_\_\_\_\_ TITLE \_\_\_\_\_

EMPLOYER \_\_\_\_\_

ADDRESS \_\_\_\_\_

TELEPHONE \_\_\_\_\_ E-MAIL \_\_\_\_\_

FAX \_\_\_\_\_ If paying by credit card, indicate \_VISA\_ or \_MasterCard\_ and provide:

CARD NUMBER \_\_\_\_\_ Expiration Date \_\_\_\_\_

Three-digit number from back of card \_\_\_\_\_ Signature \_\_\_\_\_

Guests/spouses may sign up for the exhibits-only fee, which provides access to the exhibits and to the Big Party on Tuesday evening, May 17. Please complete a separate registration form for each guest. For hotel reservations at John Ascuaga's Nugget Hotel (www.janugget.com), please call 1-800-648-1177 and use "Geology" as the code to get the group reservation rate.

## GEOLOGICAL SOCIETY OF NEVADA



gsn@mines.unr.edu • www.gsnv.org  
Telephone (775) 323-3500 FAX (775) 323-3599  
Post Office Box 13375  
Reno NV 89507  
USA

NON PROFIT  
ORGANIZATION  
U.S. POSTAGE  
PAID  
RENO, NV  
PERMIT NO. 931

# CONNORS

## Connors Drilling LLC

P.O. Box 1167 Montrose, CO 81402

*Diamond Core Drilling • Surface & Underground  
Reverse Circulation Drilling • Underground*

for Service or Information Call  
**(970) 249-3501**

**WATS: 1-800-922-2673**

**FAX: (970) 249-3701**