



# GEOLOGICAL SOCIETY OF NEVADA NEWSLETTER

Geological Society of Nevada, 2175 Raggio Parkway, Room 107, Reno, NV 89512  
(775) 323-3500 - Hours Tuesday -- Friday, 8 a.m. to 3 p.m. Monday by appointment.  
Website: [www.gsnv.org](http://www.gsnv.org) • E-mail: [gsn@gsnv.org](mailto:gsn@gsnv.org)



April 2016, Vol. 32, No. 4

Published monthly except June and July

## PRESIDENT

Elizabeth Zbinden  
Independent Geologist & Geochemist  
[E\\_Zbinden@geology.reno.nv.us](mailto:E_Zbinden@geology.reno.nv.us)

## VICE PRESIDENT

Alan Coyner  
Consulting Geologist  
[nevadageo@hotmail.com](mailto:nevadageo@hotmail.com)

## SECRETARY

Steven Weiss  
Consultant, Geologist  
[siraweiss@outlook.com](mailto:siraweiss@outlook.com)

## TREASURER

Bob Kastelic  
Consulting Geologist  
[bob\\_kastelic@yahoo.com](mailto:bob_kastelic@yahoo.com)

## MEMBERSHIP CHAIR

Bob Felder  
Kinetic Gold (US) Inc.  
[bfelder@kineticgold.com](mailto:bfelder@kineticgold.com)

## PUBLICATION CHAIR

David Boden  
Truckee Meadows Community College  
[dboden@tmcc.edu](mailto:dboden@tmcc.edu)

## EXECUTIVE MANAGER

Laura Ruud  
Geological Society of Nevada  
[gsn@gsnv.org](mailto:gsn@gsnv.org)

## GSN BOARD OF DIRECTORS

Chairwoman: Lynne Volpi  
[lvolpi@frontiernet.net](mailto:lvolpi@frontiernet.net)

GSN President  
Elizabeth Zbinden, Current

Most Recent Past GSN President  
Jonathan Price

Elko Chapter President  
Mark Travis

So. Nevada Chapter President  
Joshua Bonde

Winnemucca Chapter President  
James Carver

Class A, 2015-2018  
Lynne Volpi (Chair)  
John Watson

Class B, 2013-2016  
David Caldwell  
Greg French

Class C, 2014-2017  
David Shaddrick  
Camille Prens

## CALENDAR OF GSN EVENTS

April 6, 2016  
THURSDAY

### SO. NEVADA CHAPTER MEETING (1st Thursday of the month)

The meeting will be held at the Las Vegas Natural History Museum, 900 Las Vegas Blvd North. **Speaker: Dr. Jeremy Koonce, DRI (Desert Research Institute).** Title: "Water Storage in Arid Soils: A Weighing Lysimeter Study". **Food & Drink Sponsored by: Sponsor needed!** Please contact Josh Bonde for more information: [Joshua.bonde@unlv.edu](mailto:Joshua.bonde@unlv.edu). Details on page 7.

April 13, 2016  
WEDNESDAY

### WINNEMUCCA CHAPTER MEETING (2nd Wednesday of the month)

The meeting will be held at the Martin Hotel, 94 W. Railroad St., Winnemucca, NV. Drinks at 6 p.m. Appetizers at 6:30 p.m. and talk at 7:00 pm. **Speaker: Roger Steininger, NuLegacy Gold Corp.** Title: "The Iceberg Gold Deposit- A newly discovered Carlin-type gold system in the Cortez Trend, Nevada". **Food & Drinks Sponsored by: REDCOR DRILLING, INC.** For more info please contact James Carver @ [icarver@silverstandard.com](mailto:icarver@silverstandard.com). Details and abstract on page 8.

April 15, 2016  
FRIDAY

### GSN MEMBERSHIP MEETING (3rd Friday of the month)

The GSN meeting will be held at the Reno Elks Lodge, 597 Kumle Lane, Reno, Nevada. Social hour/Posters begin at 6 pm, Dinner at 7 pm and talk at 7:45 pm. **Student Presenters: Chad Carlson & Steven Howell, University of Nevada, Reno.** See page 3 for titles! **ALSO! Ten+ Poster Presenters will explain various research topics.** **Drinks Sponsored by: GEOTEMPS, INC.** Cost for Dinner—\$25. Please make reservations for dinner with Laura Ruud at the GSN office: [gsn@gsnv.org](mailto:gsn@gsnv.org) or call 775-323-3500. Details and abstracts on pg. 3 & 4.

April 21, 2016  
THURSDAY

### ELKO CHAPTER MEETING (3rd Thursday of the month)

The meeting will be held at the Western Folklife Center, 501 Railroad St., Elko, NV. Refreshments begin at 6 pm. Talk at 7:00 pm. **Speaker: Scott Conley, Sr. Underground Mine Geologist, Barrick Cortez.** Title: "The Nuts and Bolts of Completing Underground Dewatering Wells at Barrick Cortez Hills Underground Mine, Lander County, Nevada". **Food & Drinks Sponsored by: GEOTEMPS, INC.** For more info please contact Mark Travis at: [mark.william.travis@gmail.com](mailto:mark.william.travis@gmail.com). Details on page 7.

May 6-8, 2016  
FRI-SUN

### G.S.N. SPRING 2016 FIELD TRIP REGISTRATION FORM on page 8! SIGN UP BY APRIL 22, 2016!

It is time to Register NOW for the GSN Spring 2016 Field Trip, "Nevada's Golden Giants: Goldstrike and Gold Quarry" as we travel to the famous Carlin Trend. We expect to sell out so register early. See Registration form on page 8!

## G.S.N APRIL MEETING SPONSOR



RECRUITING EXPERTS FOR INDUSTRY

**FROM THE PRESIDENT**  
**Elizabeth Zbinden, G.S.N. President 2015-2016**  
**APRIL 2016**

---

**President's Column April 2016**

Springtime! Flowers have started, and the reliable Northern Nevada weather response, snow. Last week I was out walking among just-getting-going flowers. Maybe by the time you read this we'll be able to see flowers – and outcrops!- again but for now they are covered. Here are some pictures to keep us in the mood for flowers and outcrops.



I'm living through a situation that will be entirely familiar to any of you who have been in exploration any length of time. Company A buys a property from Company B along with all the data thereto. The first thing to do is go through all the old data in detail and re-interpret because of course Company A has a better idea than Company B, that's why they bought the property, isn't it? Here are the assays, here are the logs, and here are some cuttings and core too. But wait, where is the core for that crucial hole that will tell us whether our new model has any hope of being right? Aargh! Company B threw it away! Curses! My colleagues have urged me to insert this Public Service Announcement: Keep the core and cuttings! All of it! You never know when the model you save may be your own.

Elsewhere in this newsletter (pp 12-13) you will find an article about **BLM Resource Advisory Councils (RACs)**. Read it, and consider whether you or someone you know would be a good candidate. RACs include citizens from a number of different backgrounds, and among GSN members many of them are represented. I can think of GSN members who are: 'representatives and employees of academic institutions who are involved in natural sciences'; 'representatives and employees of a state agency responsible for the management of natural resources'; 'representatives of organizations associated with energy and mineral development'; 'off-highway vehicle use'; 'dispersed recreation'; and of course 'public-at-large'. Nominate yourself! Serving on a RAC could be a good way to help keep the 'public' in public lands.

***The G.S.N. wishes to thank  
ENVIROSCIENTISTS, INC. for sponsoring  
our MARCH 18, 2016 meeting in RENO!!***



# *GSN Friday, APRIL 15, 2016 Membership Meeting*

For dinner reservations, please e-mail [gsn@gsnv.org](mailto:gsn@gsnv.org) or call 775-323-3500

**by 5:00 p.m. on WEDNESDAY, APRIL 13TH!!**

**Social Hour and Poster Presentations begin @ 6:00 pm; Dinner @ 7:00 pm;**

**Two Student Speakers to Follow @ 7:45 pm**

**Location: RENO ELKS LODGE, 597 KUMLE LANE (across from the Convention Center)**

**DINNER COST—\$25.00 per person (Reservation no-shows will be invoiced.)**



## **STUDENT POSTERS & ORAL PRESENTATIONS NIGHT MACKAY SCHOOL OF EARTH SCIENCES & ENGINEERING**



### **Two Student Oral Presenters: Chad Carlson and Steven Howell**

#### **“Enigmatic Walker Lane Dextral-Shear Accommodation: Paleomagnetically-Determined Vertical-Axis Rotation of Crustal Blocks between the Central Walker Lane and Sierra Nevada Frontal Fault System”**

**Chad W. Carlson**, Nevada Bureau of Mines and Geology, University of Nevada, Reno  
James E. Faulds, Nevada Bureau of Mines and Geology, University of Nevada, Reno

#### **SPEAKER ABSTRACT (extended abstract will be sent via email):**

Located west of dextral fault systems of the central Walker Lane and east of the Sierra Nevada frontal-fault system is a region of north-striking normal faults and asymmetric basins, where geodetic studies define ~5 mm/yr of northwest-directed dextral strain. As this region is devoid of major strike-slip fault systems, how this strain is accommodated is poorly understood. To elucidate the long-term tectonic development of this region, paleomagnetic data from late Oligocene ash-flow tuffs are used to determine magnitudes of vertical-axis rotation of crustal blocks, as a potential mechanism for accommodation of dextral shear.

Paleomagnetic directions collected from multiple locations across the region define domains of vertical-axis rotation of varying magnitudes. Preliminary paleomagnetic data have identified low/no rotations within translating blocks of the central Walker Lane (Walker Lake domain), statistically-significant magnitudes of ~20-30° clockwise vertical-axis rotation west of central Walker Lane dextral faults, and >30° of clockwise rotation to the northwest in the northern Walker Lane (Carson domain). Boundaries between these domains, although potentially gradational, are relatively discrete and support a distinction of domains by style of faulting. Comparison of Oligocene ash-flow tuff rotation data to previously sampled Mio-Pliocene volcanics and present-day geodetically-derived rotation rates support a late-Miocene initiation of dextral-shear accommodation in the region and suggest a decrease in rotation rates over time.

#### **“Formation of Disseminated Epithermal Gold Ore at Round Mountain, Nevada”**

Steven Howell,<sup>1</sup> and John Muntean,<sup>1,2</sup>

<sup>1</sup>Center for Research in Economic Geology, University of Nevada Reno, 1664 N. Virginia St., Reno, NV USA 89557

<sup>2</sup>Nevada Bureau of Mines and Geology, SEM403, University of Nevada Reno, 1664 N. Virginia St., Reno, NV USA 89557

#### **SPEAKER (& POSTER) ABSTRACT:**

The Round Mountain gold deposit is a world-class bulk-minable low-sulfidation volcanic-hosted epithermal deposit with 20 million contained ounces of gold. Research was aimed at better understanding how disseminated ore at Round Mountain formed. Specifically alteration and the disseminated mineralization are documented at all scales within the poorly-welded unit of the Round Mountain tuff and distinct fluids pathways of the ore-forming hydrothermal fluids are identified. Detailed logging, petrographic work, whole-rock geochemical assays and hyperspectral data indicate disseminated mineralization is associated with strong potassic alteration expressed geochemically by the metasomatic enrichment of potassium and depletion of sodium and calcium from drill-fan to mine-wide scales. Several major upwelling zones are apparent in models of gold mineralization and mine-wide mass change models of major oxide elements derived from whole-rock geochemical assays. Upwelling zones are largely controlled by a WNW structural fabric in underlying Paleozoic meta-sedimentary rock. Multiple overprinting phases of concentric alteration assemblages consisting of inner silica-adularia, middle illite and outer smectite zones exist within the mineralized lower poorly-welded tuff. Porosity and permeability decrease with each overprinting hydrothermal event, and fluid pathways appear to constrict with each subsequent event, forming higher-grade cross-cutting tubular or vein-like structures.



## STUDENT POSTER PRESENTATIONS:

(Posters we had by press time with more still being submitted!)

**Name: Justin B. Milliard**

Poster Title: "Preliminary Insights into Multi-Scale Fluid Pathway Controls from the Middle Miocene Northern Nevada Rift, North-Central, Nevada, USA". Co-Author: John L. Muntean

**Name: Carli Balogh**

Poster Title: "Tertiary Volcanic Rocks, Hydrothermal Alteration, and Epithermal Precious Metal Deposits of the Patterson Mining District, Sweetwater Mountains, Lyon County, NV and Mono County, CA". Co-Author: Peter Vikre

**Name: Sergey A. Konyshev**

Poster Title: "Sedimentary Rock-hosted Gold Mineralization of the Stibnite District, Valley County, Idaho".  
Advisor: John L. Muntean

**Name: Elizabeth Bengé**

Poster Title: "Pilot Study using Elemental Geochemistry as a means of Discriminating Chert Stratigraphy in the Roberts Mountains Allochthon, Nevada". Co-Author: Paula Noble

**Name: Carolina Zamora**

Poster Title (Tentative): "Investigating the cooling history of the eastern Himalaya Greater Himalayan rocks: a  $^{40}\text{Ar}/^{39}\text{Ar}$  and U-Pb thermochronology study from eastern Bhutan".  
Co-authors: Dr. Stacia Gordon (UNR), Dr. Sean Long (WSU) (more to be added).

**Name: Tyler Hill**

Poster Title: "Time-Space Relationships between Sediment-Hosted Gold Mineralization and Intrusion-Related Polymetallic Mineralization at Kinsley Mountain, NV". Co-Authors: John Muntean, Moira Smith, and Robert Creaser

**Name: Tracy Anderson**

Poster Title: "Testing Silver Mobility: An Investigation into supergene silver enrichment at the Rochester mine in Pershing County, NV". Advisor/Co-Author: John Muntean

**Name: Holly McLachlan**

Poster Title: "Stratigraphy of the Soda Lake geothermal field, Fallon, NV".

**Name : Robin Chacko**

Poster Title: "Magmatic-Tectonic Interactions: Implications for Seismic Hazard Assessment in the Central Walker Lane and Long Valley Caldera Regions". Co-Authors: William Hammond, Geoffrey Blewitt, Jayne Bormann

### NEWS FROM THE GSN FOUNDATION

For the past nine plus years it has been my pleasure to serve as Chair of the GSN Foundation. During that time the Foundation has been able to substantially grow the treasury while greatly expanding our outreach. This was not done singlehandedly; it required a devoted board that deserves much of the credit for the Foundation's success. It has come time to pass the Chair on, and I will be leaving the board at the end of May. Also, two of our directors, Dan Rovig and Dieter Krewedl, will also be resigning. I am delighted to report that the Foundation will be left in great hands as Cami Prenn has agreed to become Chair and Robert Thomas will assume the responsibilities of Treasurer. To fill the vacancies on the board, Pam Klessig, Bill Howald, and Bob Felder will be joining the Foundation's board.

I would be remiss not to thank the GSN membership, and friends, for their generous donations that have made the Foundation a success. Without your support we would not have been able to offer the variety of programs that constitute our outreach. Thank you.

Roger C. Steininger  
Chair, GSN Foundation

*Thank you to our generous  
donors in March!*

### G.S.N. FOUNDATION

#### Platinum Sponsor

**Charles Weakly**

#### G.S.N. Student Dinner Fund

**Anonymous**

**Sam Arentz III**

**Edward Orbock III**

**Charles Weakly**

#### G.S.N. Student Field Trip Fund

**Charles Weakly**

# FACES OF GSN

Peter Hahn

## A TALE OF MENTORS

I was born in Akron, Ohio, many years ago. My dad was a mechanical engineer, I had a natural inclination toward gadgets and gizmos, and it was almost a given that I would follow that profession. We moved “out west” during WW II, lived in Phoenix until the end of the war, then moved to Los Gatos, California, in the Bay Area, where I graduated from high school in 1952.

A career in geology, or anything that had much to do with the great outdoors, had never entered my mind. I started college at UCLA, where they were reported to have a very good speech therapy program (I had stuttered severely from childhood.) UCLA had no residence dorms, but I got into a student-run Co-op dorm – total immersion in a very liberal atmosphere which was really a new experience! I was assigned to a double room with a geology PhD candidate, Dave Givens – my first mentor. I had to declare a major, engineering required scary amounts of math right away, so what the hell – Geology! I took the first course, taught by a Brit, aced it, and was hooked. The speech course, not so much.

I was (surprisingly) accepted at Stanford as a sophomore transfer. Stanford’s School of Mineral Sciences then was a very good hard-rock school (alas, no longer), and I benefitted from many really great professors who became mentors – Charles Park, Konrad Krauskopf, Siemon Muller, Ben Page, John Harbaugh, Colin Hutton. We had a rigorous summer field mapping course, three weeks in the Coast Range in Cretaceous sediments and volcanics, and three weeks on Tioga Pass in the Saddlebag roof pendant and several granitic domains.

I had concentrated on ore deposits, but my graduation in 1956 matched a cyclical “down” and my first geology job was with the California Department of Water Resources, supervising core drilling programs on dam sites in the Sierra Nevada, a pretty fun job that almost lured me away from mining. They even paid overtime, and there was plenty of that, to supplement my magnificent salary of \$481 per month. The DWR budget was cut the next year, and I returned to Stanford to seek a Master’s. My thesis was on alteration gradients at San Manuel; I think now I saw vectors toward the Kalamazoo deposit, but was too dumb to recognize it.

A real mentor came into my life as a grad student; Wolfgang “Woody” Mahrholz, who taught an ore deposits lab and seminar. Woody was also consulting for Bear Creek Mining Company and, though jobs were still scarce, offered me a summer job in 1959, doing the first Bear Creek mapping and sampling at Copper Creek, Arizona. Salary cut to \$450. In a couple of months, Woody got a budget approved for recon work around the Ely, Nevada deposit; I moved to Ely (another cultural eye-opener!) and the rest is history – I stayed with Bear Creek in Nevada for nearly thirteen years.



With Bear Creek at Dolly Varden Flat, Elko Co, NV, 1961

Bear Creek/Kennecott was a great place to work in the porphyry copper boom days. Exploration budgets were generous to a fault (“Don’t you want more air mag than that?”) and we were taught that we were smarter, more cutting-edge in research, first in line for a discovery, than anyone else in the business. In reality, our competitors, Anaconda, Phelps Dodge, Amax, and others were doing the same thing, but we weren’t allowed to talk to those guys. It was all very cloak-and-dagger. The “real” target was another Bingham Canyon, and nothing else would do.

We had a small office/apartment on Mary Street in Reno, where I crashed from time to time; one of the other geologists, George Stathis, alerted me to the little group called Geological Society of Nevada, and I started going to monthly meetings at The Stein on Center Street – long since replaced by Harrah’s – and joined about 1961. A big meeting might be 25 – 30 folks, provided there was a copper talk. I’ve been a GSN member since then, and the association and camaraderie has been invaluable.

Bear Creek opened a Reno district office in 1964, under Bob Holt, and later Anton “Ton” Netelbeek, and after living out of a suitcase for several years, (cont. on pg. 6)



With Charlie Goddard, Monte Cristo tungsten prospect, White Pine Co., NV. 1977. Union Carbide

(Hahn, cont. from pg. 5)

I moved to Reno, and was ultimately responsible for all reconnaissance work, and numerous drilling projects, in the Great Basin. It was a privilege working with John Welsh to unravel the stratigraphy and structure of the Butte Valley deposit. Ton Netelbeek (the best manager I ever worked for), Doug Cook, John Welsh, Charlie Goddard and the guys in the Geologic Research and Geophysics Division in Salt Lake City were valued mentors.

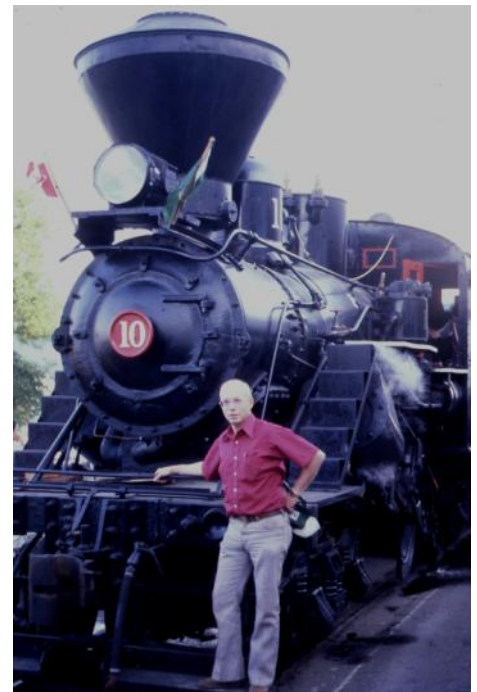
One downer, though, was the single-minded concentration on copper and moly; you needed a blessing from above to run a gold assay. I drilled through the edge (I think) of the Lone Tree Hill deposit in search of lower plate rocks and never saw the gold. I guess it wasn't ore grade then anyway. Unfortunately, nothing Bear Creek developed in those years met the criteria to replace Bing-

ham, and the party ended in December, 1971. Bear Creek laid off 2/3 of the salaried staff and the Reno office shut its doors. Merry Christmas, everyone!

A flurry of resumes later, and still within my Kennecott severance pay, Jim Morgan, who led the Reno office for Union Carbide, offered me a job in their tungsten program, to "upgrade" his geology group. I quickly realized that he had some real good "prospector oriented" geologists on staff, and managed to save their jobs. I learned to love tungsten skarns, and was soon promoted to District Geologist. Among others, Jim Morgan and Charlie Goddard (again) stand out as mentors. During my time at Carbide, we brought the Indian Springs and Pilot Mountains tungsten deposits into the fold. At first, it was a very congenial and professional group, if rather management top-heavy, but friction with Attila the Hun (you know of whom I speak, Dave!) resulted in unemployment in 1978.

Utah International had picked up the Indian Springs tungsten deposit north of Montello in far northeastern Elko County, and the project geologist, Marshall Himes, needed someone familiar with the property to take over. I directed a coring project for metallurgical sampling for two seasons; the first phase in the winter of '78-'79 was a snowy disaster, but the next phase in 1979, with Boyles Bros. drilling went well. Living in Montello was a hoot – I think most of the permanent residents are escaping from something! It was challenging working for three bosses – the exploration department in Reno, headed by Sanford Taylor (an old Stanford buddy, with whom I recently connected after 35 years at a meeting in Tucson); the metallurgical research lab in Sunnyvale, California; and General Electric, UI's parent company in Schenectady, NY. The three sometimes had conflicting goals and periodic visitations from managers were interesting.

The handwriting was on the wall in 1980 for GE's interest in the mining business. I did a little tungsten work for Callahan (Bob Thomas, Art Leger), and answered a blind ad in the Reno paper for a Chief Geologist. My old friend (from GSN) Jim Bright called me, and hired me as Chief Geologist in a new gold company he was forming, Nevada Resources Inc. We took NRI public on the American Stock Exchange (in 1980 you could sell anything with Resources in the name!) Working with a junior was a new adventure, one day collecting soil samples, the next day creating a document for the SEC. NRI worked mainly in JVs with Denison Mines and U.S. Borax, but we brought Western States Minerals in as partner on one gold prospect in western Utah, which resulted in discovery of a nice little gold deposit. Sadly, NRI could not fund our portion of development funds; we sold our share, and Western States ultimately produced about 200K ounces from the Drum Mine. NRI explored many other prospects in the Great Basin and Mother Lode, but no significant (cont. on pg 10)



What I like best after family and rocks

## **GSN SOUTHERN NEVADA CHAPTER MEMBERSHIP MEETING**

**THURSDAY, APRIL 7, 2016**

**Location: Las Vegas Natural History Museum, 900 Las Vegas Blvd. North**

**Time: Pizza & Drinks @ 5:30 p.m., Talk begins @ 6:30 p.m.**

**SPEAKER: Dr. Jeremy Koonce, DRI (Desert Research Institute)**

**TITLE: "Water Storage in Arid Soils: A Weighing Lysimeter Study"**

**Food Sponsored by: No sponsor this month, unless YOU are interested (\$250 covers pizza/drinks! Contact Josh Bonde to sponsor—[joshua.bonde@unlv.edu](mailto:joshua.bonde@unlv.edu))**

## **GSN ELKO CHAPTER MEMBERSHIP MEETING**

**THURSDAY, APRIL 21, 2016**

**Location: The WESTERN FOLKLIFE CENTER, ELKO, NEVADA**

**Time: Refreshments/Appetizers @ 6:00 p.m., Talk @ 7:00 p.m.**

**SPEAKER: Scott Conley, Sr. Underground Mine Geologist, Barrick Cortez**

**TITLE: "The Nuts and Bolts of Completing Underground Dewatering Wells at Barrick Cortez Hills Underground Mine, Lander County, Nevada"**

**Food and Drinks Sponsored by: GEOTEMPS, INC.**



**Abstract:**

Mining priorities at Barrick Gold's Cortez Hills Underground Middle Zone ore body required rapid dewatering in a zone with limited hydrologic information of a fracture controlled aquifer. This required the installation of a robust piezometer network, hydrologic modelling, and field testing of the models assumptions. This information provided conclusive evidence that the aquifer was confined geologically from the surrounding ore bodies and lithological units. This also confirmed initial assumptions that underground dewatering wells were economical when compared to a surface wells. Hydro-physical downhole surveys in test holes were used for determining the ideal well locations. A modified Cubex was used to drill the wells and specialized equipment was built to complete them which allowed for the Middle Zone to be dewatered on schedule and eliminate mining delays due to dewatering.

**Thank you to the SO. NEVADA CHAPTER Meeting SPONSOR for MARCH 3, 2016!**

**Thank you to the ELKO CHAPTER Meeting SPONSOR for MARCH 17, 2016!**

**MARY KLINGER  
GSN Member**





# GSN WINNEMUCCA CHAPTER MEMBERSHIP MEETING

**WEDNESDAY, APRIL 13, 2016**

**Location: The MARTIN HOTEL, WINNEMUCCA, NV**

**Time: Drinks @ 6:00 p.m., Appetizers @ 6:30 p.m., Talk begins @ 7:00 p.m.**

**SPEAKER: Roger Steininger, NuLegacy Gold Corp.**

**TITLE: “The Iceberg Gold Deposit—A newly discovered Carlin-type gold system in the Cortez Trend, Nevada”**

**Food and Drinks Sponsored by: REDCOR DRILLING**



## **Abstract:**

### **The Iceberg Gold Deposit-A newly discovered Carlin-type gold system in the Cortez Trend, Nevada**

Roger C. Steininger<sup>1</sup>, Garrett J. Frey, David W. Mallo, Bryan A. Kellie  
NuLegacy Gold Corporation, Reno, NV

NuLegacy Gold's Iceberg gold deposit is in the northern Simpson Park Mountains, an area that has been intermittently explored since the late 1970s. Previously, the exploration focus was on near surface gold mineralization in Tertiary volcanic rocks. A few drill holes penetrated the underlying Devonian carbonates, some of which contained gold mineralization, but at depths that were not of interest at the time. When the property was acquired, NuLegacy assembled most of the important historic data, which coupled with advances in the understanding of the geology of Carlin-type gold deposits in the Cortez area allowed for a reinterpretation of the geology at Iceberg. Drilling by NuLegacy, chip relogging of historic drill holes, and a reinterpretation of data defined important gold bearing horizons in the Devonian Horse Canyon Formation-Upper Wenban Formation contact zone, and within the Middle Wenban. Tertiary volcanic rocks, which may correlate with Eocene volcanic flows and volcanoclastics in the area, also contain significant gold mineralization. Gold mineralization has been traced along north-northwest trending corridor that is at a minimum 3 km long, several hundred meters wide, and several tens of meters thick, and has the characteristics of a Carlin-type gold deposit.

NuLegacy's drilling has defined at least three concentrations of gold mineralization within the mineralized corridor that are locally known as the North, Central, and South zones. Each is still open in most directions and the gaps between the zones have not been drilled. Supergene effects are sufficiently deep that most of the mineralization is total oxidized with only a few deeper holes containing gold bearing pyrite. The mineralized intervals are typically associated with decalcification of the carbonates, silicification, and extensive brecciation, and a typical Carlin-type trace element suite. Since NuLegacy's drilling is wide spaced and there are many gaps between the mineralized zones it is too early to construct a meaningful resource estimate.

## **Speaker's Bio:**

Roger C. Steininger PhD (Colorado State University) is the speaker. Roger has over 40 years' experience in exploration and mining starting his career with the Climax Molybdenum Co. followed by an association with Amselco Mineral before establishing a consulting practice in 1987. In 2008 he became one of the founding partners and Chief Operating Officer of NuLegacy Gold Corporation.

Contact information for Steininger-NuLegacy Gold Corporation, 4790 Caughlin Parkway #765, Reno, NV 89519-0907, 775-825-0494, Steininger cell 775-742-6333 and email audoctor@aol.com.

**Thank you to the WINNEMUCCA  
CHAPTER Meeting SPONSOR  
for MARCH 9, 2016!**





**G.S.N. SPRING 2016 FIELD TRIP REGISTRATION FORM—MAY 6-8, 2016**

**DUE BY APRIL 22, 2016!**

It is time to Register NOW for the GSN Spring 2016 Field Trip, "Nevada's Golden Giants: Goldstrike and Gold Quarry" as we travel to the famous Carlin Trend. We will be leaving Reno on Friday afternoon, May 6th and staying in Elko on Friday and Saturday nights. The Goldstrike tour is on Saturday, May 6th, followed by cocktails, dinner, and NBMG guest speaker, Mike Ressel in Elko. The Gold Quarry tour is Sunday, May 8th, with the return to Reno late Sunday. A reduced price option without housing is available to our Elko members. We expect to sell out so register now!



**Geological Society of Nevada (GSN) Spring 2016 Field Trip  
Friday Evening, Saturday & Sunday, May 6 - 8, 2016**



**"Nevada's Golden Giants: Goldstrike and Gold Quarry, Eureka County, Nevada"**

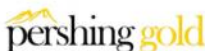
**Friday, May 6, 2016:** 1:00 p.m. - First Van will leave the GSN office for Elko (Dinner on your own in Elko and check-in at Stockmen's)  
5:00 p.m. - For those who have to work Friday - Two Vans will leave the GSN Office. Arrive Elko ~9:00 p.m.  
(Sack Dinner will be provided.)  
Overnight at Stockmen's Hotel & Casino, Elko, Nevada

**Saturday, May 7, 2016:** 8:00 a.m. - Barrick bus to leave Stockmen's Hotel & Casino and drive to Goldstrike (Locals need to be on the bus!)  
(Breakfast on your own) 9:00 a.m. - Tour of Goldstrike Mine begins  
12:00 Noon - Sack Lunch provided at Goldstrike  
4:00 p.m. - Return to Stockmen's Hotel & Casino  
5:30 p.m. - Drinks at Stockmen's Hotel & Casino  
6:30 p.m. - Dinner at Stockmen's Hotel & Casino  
7:15 p.m. - Presentation by Mike Ressel, NBMG - "Overview of the Carlin Trend"

**Sunday, May 8, 2016:** 8:00 a.m. - Vans to leave Stockmen's Hotel & Casino - Drive to Gold Quarry gate (Locals meet at the gate - 8:30 am)  
(Breakfast on your own) 9:00 a.m. - Tour of Gold Quarry Mine begins on Newmont bus (All participants need to be on the bus)  
12:00 Noon - Sack Lunch provided at Gold Quarry  
2:00 p.m. - Bus returns participants to Gold Quarry gate  
2:15 p.m. - Vans depart for Reno. Arrive Reno ~6:30 p.m. (Locals drive home.)

**ALL PARTICIPANTS WILL NEED PPE - Steel-toed boots, hard hat, safety glasses, orange/lime safety vest! (Loaners will be available)**

**THANK YOU TO OUR GENEROUS SPONSORS!**



Lodging:  Single  Double  No Room

Name: \_\_\_\_\_

Double Roommate: \_\_\_\_\_

Company: \_\_\_\_\_

MEMBER COST:

Cell Phone: \_\_\_\_\_

- \$250 - Single Room
- \$200 - Double Room (Limited Number)
- \$100 - No Room needed in Elko
- \$100 - Spouse (share SINGLE Room - one bed)
- \$0 - GSN Student Member Helpers (limit 6)
- \$30 - Dinner & Talk Only in Elko - Saturday Evening

Email: \_\_\_\_\_

Person to contact in case of Emergency:

\*NON-MEMBER COST:

Name: \_\_\_\_\_

- \$300 - Single Room
- \$250 - Double Room (Limited Number)
- \$150 - No Room needed in Elko
- \$150 - Spouse (share SINGLE Room - one bed)
- \$40 - Dinner & Talk Only in Elko - Saturday Evening

Phone: \_\_\_\_\_

\*Non-members are encouraged to become members of the GSN in order to take advantage of the reduced Member Rates - Annual Dues are \$50/year.

**Payments must be made by Friday, April 22, 2016  
No refunds after Friday, April 22, 2016**

Total amount included with this form: \_\_\_\_\_

Payment:  Check # \_\_\_\_\_  Cash  Visa  Master Card  Discover  American Express

Card Number: \_\_\_\_\_ Exp. Date: \_\_\_\_\_ 3 or 4 digit security code: \_\_\_\_\_

Name on Card: \_\_\_\_\_ Card Address: \_\_\_\_\_

Return with payment to: Geological Society of Nevada  
2175 Raggio Parkway  
Reno, NV 89512  
Phone: (775) 323-3500, Fax: (775) 323-3599  
E-mail: gsn@gsnv.org

(Faces of GSN, Hahn—cont. from pg. 6)



Mapping in Ignacio Mine, Cerro Gordo CA, 1990—Coeur Exploration

discoveries, and control of the company was acquired in 1985 by a non-mining fellow who wanted a clean shell to promote a cancer cure! My five years with Jim were professionally rewarding and I even made some money on NRI stock options.

The consulting business for the next ten years or so was pretty exciting; my major clients included Coeur Explorations (thanks, Win Rowe and Mike Tippet), A.F. Budge (thanks, One-Eyed Prospector and Carole O'Brien) and Cyprus-Amax (thanks, Bob Blair, Jim Matlock, Bill Stanley) and numerous juniors and investors. I would like to think that I made some valuable contributions as well as saved some people lots of money. As all who read this can attest, most of what you look at is either a real dog, or just not quite good enough or too well tested to get excited about. Highlights include the best camp job ever, at Cerro Gordo, California for Coeur, delineation of (still untested) deep zinc skarn targets at Darwin, California for Cyprus) and examination of copper and gold properties in Chile and Argentina (thanks, Mary Little.)

I was about to fade into "99% semi-retirement" in St. George, Utah when my old mentor Marshall

Himes found me in 2006 (through inquiry to the GSN office – thanks, Laura!) Marshall had joined the board of a new junior, Galway Resources; Galway had picked up the Indian Springs tungsten deposit and needed someone to ride herd on further development. So I left my one-and-only Federal job, temporary with the Natural Resource Conservation Service on a flood control project – they needed someone who could tell the difference between gypsum and basalt rip-rap – and went to work for Galway as a consultant and later as Exploration Manager. We still couldn't solve the metallurgical problems at Indian Springs and after great expenditure dropped the property.



La Rioja state, Argentina, 2/1995 at 13,000 ft., Summer on the altiplano. Yes, those are snowflakes. Cyprus-Amax

Galway picked up Cu-Mo-W properties in Arizona and New Mexico, but the company was sold to a Brazilian billionaire, based on a potentially economic gold deposit in Colombia. My final gasp with a Galway spin-off was leasing a couple of very attractive Carlin-type gold properties in Lander County (thanks for the great mapping job, Fred!). Galway's principals became very discouraged about the resource markets (like everyone else) in 2012 and went into hibernation.

Now, save for occasional inquiries regarding the Darwin Pb-Zn-Ag resource, I'm hibernating too, but still vitally interested in this strange business I've been a part of for so long. Through Tempiute Resources LLC, two partners and I hold much of the old Union Carbide tungsten producer in Lincoln County, Nevada. I eagerly read the excellent GSN Newsletter Laura puts together. The bottom line is that there have been good and not-so-good times, nasty jobs and successes, good people and those I could do without, but unlike many folks who change careers several times in their lives, I can't imagine myself having done anything else. GSN has been a vital part of my professional life; I've attended all the Symposiums and wish I could attend more of the meetings.

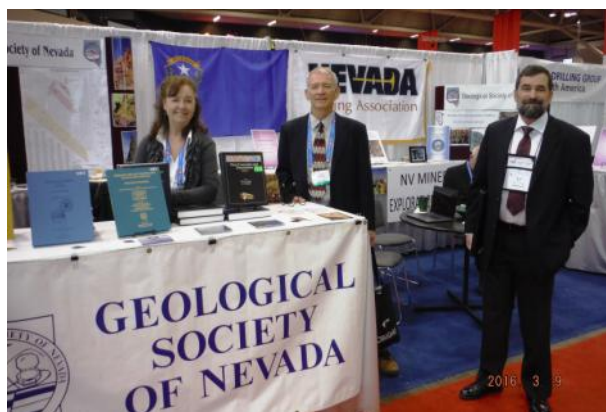
None of us could have made much progress or achieved success without the mentors in our lives. Alas, some of the mentors to whom I owe so much have left us, but I have treasured going off in the corner of the (very noisy during cocktail hour!) Elks' Lodge with a glass of Icky and the rest of the Old Guys and talk (commiserate?) about the Old Times. My wife Sandi and I and our three Westies live in West Jordan, Utah now, and although I've joined the Utah Geological Association, there's nothing like GSN in Salt Lake City!

West Jordan, Utah, March 3, 2016



## G.S.N. Exhibits at PDAC in Toronto, ONTARIO!

A contingent of GSN volunteers (and Laura) traveled to Toronto March 5-10, 2016 for the annual PDAC (Prospector's and Developers Association of Canada) convention. This year the GSN joined forces with the Nevada Mineral Exploration Coalition and the Nevada Mining Association to represent Nevada to the Canadian mining and investing world. We were privileged to have Sheldon Mudd join us in the booth who represents Gov. Sandoval's Office of Economic Development. **A big thanks** to all those who helped in the booth and/or carried publications to Toronto for the booth. **These volunteers include Dave Shaddrick, Elizabeth Zbinden, Mario Desilets, James Bell, Clancy Wendt, Vic Chevillon, Ruth Carraher and Tony Taylor.**



Laura Ruud at the GSN Booth at PDAC along with GSN members Tom Burkhart and Mike Power. March 2016. Photo by E. Zbinden.

A huge **THANK-YOU** especially to **Dan Kappes, Jim Estes and Kappes, Cassiday & Associates** who shipped a box up for us with their booth. Also thanks to Dan Kappes for the dinners he bought Laura while in Toronto which helps keep the GSN expenses lower! We also would like once again to thank **Ian McAvity and Harold Doran of Duncan Park Holdings** who store our booth and book inventory in Toronto year to year and help transport it to and from the convention center. Sadly, Ian passed away suddenly one week after the convention on March 16th. He was a generous man and good friend to the GSN and its members.



### ATTENTION GSN GOLFERS!!

### GSN'S ANNUAL GOLF TOURNAMENT



### WASHOE GOLF COURSE, RENO, NV—SAVE THE DATE! SATURDAY, JUNE 18, 2016

The **GSN's Annual Golf Tournament** will be held on **Saturday, June 18, 2016**. We are pleased to have **American Assay Laboratories** as the main sponsor this year! "Shotgun Start" will be at 1:00 P.M. at the Washoe Golf Course, Reno, NV.

Registration forms will be available in the May newsletter and will also be sent by email sometime in April.

Members can sign up alone or as a two-, three-, or foursome. Each GSN Member is allowed ONE guest. The Registration fee will include 18 holes of golf, dinner, and drink coupons. The GSN Foundation will be selling Mulligans for \$5 each with a limit of four per person. The Foundation will also be selling raffle ticket for \$5.00 each or 5 for \$20.00. We always have great prizes donated for the raffle! All proceeds raised will benefit the GSN Foundation. Please join us for a great time and we thank you in advance for supporting the GSN Foundation.



**WE ARE IN NEED OF RAFFLE PRIZES (or cash donations) for the Foundation's Golf Tourney Raffle. PLEASE CONTACT Cami Prenn at [camimda@mda.com](mailto:camimda@mda.com) or Bob Felder at [bfelder@kineticgold.com](mailto:bfelder@kineticgold.com) to donate!**

(THIS IS THE BLM ARTICLE REFERENCED IN THE PRESIDENT'S MESSAGE ON PAGE 2)



*BLM Nevada News*  
NEVADA STATE OFFICE NO. 2016-012  
FOR RELEASE: March 25, 2016  
CONTACT: Chris Rose, 775-861-6480, [crose@blm.gov](mailto:crose@blm.gov)

**BLM Nevada Accepting Applications for Resource Advisory Councils**

Reno, Nev.-- The Bureau of Land Management (BLM) Nevada is accepting nominations for open positions on its three Resource Advisory Councils (RACs) until April 29.

Resource Advisory Councils are citizen-based groups that make recommendations to the BLM regarding public land and resource management, including land-use planning, recreation, fire management, livestock grazing, and wild horse and burro herd management. Each RAC consists of 10 to 15 members with an interest in public land management. Members are appointed by the Secretary of the Interior to serve an initial three-year term and may be reappointed to serve additional three-year terms. The diverse membership of each RAC is aimed at achieving a balanced outlook that the BLM needs for its mission, which is to manage the public lands for multiple uses.

Each of the RACs has different positions open in the following categories and interested persons can apply for any position:

Category One – Public land ranchers and representatives of organizations associated with energy and mineral development, the timber industry, transportation or rights-of-way, off-highway vehicle use, and commercial recreation.

Category Two – Representatives of nationally or regionally recognized environmental organizations, archaeological and historical organizations, dispersed recreation activities, and wild horse and burro organizations.

Category Three – Representatives of state, county, or local elected office; representatives and employees of a state agency responsible for the management of natural resources; representatives of Indian Tribes within or adjacent to the area for which the RAC is organized; representatives and employees of academic institutions who are involved in natural sciences; and the public-at-large.

The three RACs in Nevada are:

Mojave-Southern Great Basin, which serves Esmeralda, Nye, Lincoln and Clark counties. This RAC holds meetings in the Las Vegas, Pah-rump, Ely, and Tonopah areas;

Northeastern Great Basin, which serves Elko, White Pine, Lander and Eureka counties. This RAC holds meetings in the Elko, Eureka, and Ely areas;

Sierra Front-Northwestern Great Basin, which serves Washoe, Humboldt, Pershing, Churchill, Storey, Douglas, Lyon, Mineral and Carson City counties. This RAC hold meetings in the Carson City and Winnemucca areas.

Individuals may nominate themselves or others to serve on an advisory council. Nominations should be made on the appropriate nomination form, which is available at any BLM office, or on the internet at <http://on.doi.gov/14tvwdE>. Nominees must be a resident of Nevada. Nominees will be considered on the basis of their training, education, and knowledge of the council's geographical area. Nominees should also demonstrate a commitment to consensus building and collaborative resource decision-making. All nominations must include letters of reference from the represented interests or organizations; a completed nomination form; and any other information that addresses the nominee's qualifications. All nominations will be given full consideration.

The councils meet several times a year and provide advice and recommendations to the Secretary of the Interior, through the BLM district managers and the state director, on management of the public lands within the council's geographic area. There is also a meeting of all three RACs held once a year.

Completed nominations for the **Mojave-Southern Great Basin RAC** positions should be mailed to:

Chris Hanefeld  
chanefeld@blm.gov  
BLM Ely District Office  
702 North Industrial Way, HC 33 Box 33500  
Ely, NV 89301  
Phone: 775-289-1842

Completed nominations for the **Northeastern Great Basin RAC** positions should be mailed to:

Greg Deimel  
gdeimel@blm.gov  
BLM Elko District Office  
3900 Idaho Street  
Elko, NV 89801  
Phone: 775-753-0386

(Continued on page 13)



(Reprinted with permission from the American Exploration Mining Association-AEMA, March 2016 newsletter)

### Sage Grouse Update

#### Legal Update

There now are six lawsuits challenging the Records of Decision, Final EIS and land use plan amendments for sage grouse conservation. The challengers include two governors, an attorney general, counties in two states, a state legislature, a state land board, mining interests, and environmental groups. AEMA is working with Mountain States Legal Foundation and intends to file a challenge to the two Records of Decisions in the near future.

#### Legislative Update

House National Resource Committee Chairman Rob Bishop (R-UT) and 14 co-sponsors have introduced H.R. 4339, "The Greater Sage Grouse Protection and Recovery Act of 2016." The legislation would give governors the right to reject provisions of the federal plans that are inconsistent with state plans, prohibit a listing for 10 years and prohibit mineral withdrawals that are inconsistent with state plans. The language is similar to the language the House included in last year's National Defense Authorization Act but was dropped in conference with the Senate.

#### Mineral Withdrawal

We understand the Department of the Interior (DOI) is working feverishly to complete the draft EIS and hopes to publish in the Federal Register late summer to early fall.

The National Mining Association (NMA) has developed an excellent [video](#) explaining the adverse impacts of the proposed withdrawal on America's mineral Security.

### Public Lands

#### GAO Releases Permitting Study

GAO has released a report entitled *Hardrock Mining: BLM and Forest Service Have Taken Some Actions to Expedite the Mine Plan Review Process but Could Do More*.

GAO was asked to assess the mine plan review process. This report examines (1) the number of mine plans (66) BLM and the Forest Service approved from fiscal years 2010 through 2014, among other things, and (2) challenges that have affected the length of time for BLM and the Forest Service take to complete the review process, as well as actions these agencies have taken to address these challenges. GAO obtained and analyzed mine plan review data from fiscal years 2010 through 2014, and interviewed agency officials in 23 offices, representing the 12 western states where hardrock mining occurs. AEMA participated in interviews and provided information to GAO that was included in the report. You can read the highlights, recommendations and find the full report [here](#).

Unfortunately, the final report is deeply flawed and poorly created. We will be preparing a rebuttal document and ask members of Congress to hold GAO accountable for their lack of transparency and inclusive data.

(BLM, RACs —Cont. from page 12)

Completed nominations for the **Sierra Front-Northwestern Great Basin RAC** positions should be mailed to:

Lisa Ross  
lross@blm.gov  
BLM Carson City District Office  
5665 Morgan Mill Road  
Carson City, NV 89701  
Phone: 775-885-6107

Additional information about the BLM Nevada RACs and nomination forms are available at <http://bit.ly/BLMNVRACs>.

—BLM—

### Nevada Geology Calendar 2017 Photo Contest Deadline May 31, 2016

**WANTED: Photos for the 2017 calendar showing Nevada geology at its best!**

Here are the details for the 2017 calendar contest:  
[www.nbmg.unr.edu/docs/2017\\_Calendar\\_photo\\_contest.pdf](http://www.nbmg.unr.edu/docs/2017_Calendar_photo_contest.pdf)

- **Deadline for entries is May 31, 2016.**
- Photos need to be taken in Nevada. A location description and/or GPS coordinates should accompany submissions.
- High-quality, high-resolution photo files of at least 300 dpi are required.
- You may enter as many photos as you wish.
- Email submissions to Jack Hursh ([jhursh@unr.edu](mailto:jhursh@unr.edu)).
- NBMG Cartographers will make the final decision on the winning photos.
- Prizes will be awarded for 1st, 2nd, and 3rd place winners.

## Activity Update

Mike Brady, February 2016

[www.activityupdate.com](http://www.activityupdate.com)

### NEVADA

Canasur Gold Ltd. announced that it would acquire Harvest Gold Corp. for 16,247,000 of its shares. *Press Release:* February 17

Tertiary Minerals plc. announced that recent drill results at the MB Project include 120.4-220.31 meters @ 12.02% CaF<sub>2</sub> (15TMBRC036); 74.68-97.54 meters @ 11.47% CaF<sub>2</sub> (15TMBRC038) and 53.34-190.5 meters @ 11.54% CaF<sub>2</sub> (15TMBRC039). (resource = 8,900,000 tonnes @ 10.3% CaF<sub>2</sub> indicated) *Press Release:* February 16

Silver Predator Corp. announced that based on recent studies at the Springer Project, resources aggregate 223,700 tonnes @ 0.43% WO<sub>3</sub> indicated and 1,318,000 tonnes @ 0.44% WO<sub>3</sub> inferred in the main zone and 289,600 tonnes @ 0.66% WO<sub>3</sub> inferred in the west springer zone. (was 322,700 tonnes @ 0.54% WO<sub>3</sub> indicated and 1,757,000 tonnes @ 0.49% WO<sub>3</sub> inferred) *Press Release:* February 12

Carnavale Resources Ltd.(51%) announced that recent drill results at the Red Hills Project include 128-145 meters @ 129 gpt Ag, 0.15 gpt Au, 2.42% Pb, 0.92% Zn (15RHR03). *Press Release:* February 11

Quaterra Resources Inc. announced that recent drill results at the Bear Project include 884.23-1,074.2 meters @ 0.36% Cu, 0.01 gpt Au (B-049). *Press Release:* February 8

Viscount Mining Corp. announced that recent drill results at the Cherry Creek Project include 33.5-42.6 meters @ 52.6 gpt Ag (CC01); 106.6-134.1 meters @ 52.0 gpt Ag (CC02); 100.5-112.7 meters @ 117.6 gpt Ag (CC06) and 0-100.5 meters @ 7.4 gpt Ag (CC08). *Press Release:* February 4

Goldcorp USA Inc. announced that it purchased 16,100,000 shares (9.9%) of Gold Standard Ventures Inc. for \$16,100,000. *N.M.:* February 15

Eurasian Minerals Inc. announced that it purchased a 2% NSR on the Maggie Creek Property and

a 1% NSR on the Afgan Property from Golden Predator US Holding Corp. for 250,000 shares. *Press Release:* February 23

Scorpio Gold Corp.(70%) announced that recent drill results at the Mineral Ridge/Oromonde Project include 94.49-97.54 meters @ 0.89 gpt Au (MR161918); 115.82-123.44 meters @ 4.53 gpt Au (MR161919); 77.72-80.77 meters @ 3.82 gpt Au (MR161920) and 134.11-138.68 meters @ 0.66 gpt Au (MR161921). *Press Release:* February 22

Oceana Gold Corp. announced that it purchased an additional 12,565,000 shares (4.7%) of Gold Standard Ventures Inc. to now hold a 19.9% interest. *Press Release:* February 9

NuLegacy Gold Corp. announced that it acquired an additional 30% interest (to hold 100%) in the Red Hill/Iceberg Property from Barrick Gold Corp. for 32,000,000 shares. *Press Release:* February 23

Corvus Gold Inc. announced that recent drill results in the North Bullfrog/Cat Hill Project include 22.86-30.48 meters @ 0.29 gpt Au (NB15-284); 30.48-47.24 meters @ 0.23 gpt Au (NB15-285); 89.92-99.06 meters @ 0.20 gpt Au (NB15-286) and 42.67-50.29 meters @ 0.18 gpt Au (NB15-288). *Press Release:* February 2

RenGold Inc. announced that it terminated its interest in the Sleeping Midas Property. *Press Release:* February 26

Global Geoscience Ltd. announced that it terminated its interest in the Excelsior Property. *Press Release:* February 2

Ely Gold + Minerals Inc. announced that it purchased a portfolio of 31 individual properties from Nevada Eagle LLC. for \$895,600 cash over 2 years. *Press Release:* February 26



## OTHER UPCOMING EVENTS

**5 APRIL 2016 AZ Geological Society, Tucson AZ.** Speaker: Jordan Bright presents "Looking for an Ocean in the Desert, the Enigmatic Bouse Formation". Sheraton, 5151 E Grant Rd. (& Rosemont), Tucson AZ 85712. Begins @ 6 pm. For more information visit the website: <http://www.arizona Geological Soc.org/event-2147930>

**7 APRIL 2016 Nevada Petroleum & Geothermal Society, Reno, Nevada** monthly meeting. Cocktails at 6:30 PM, Dinner at 7:00 PM, Ramada Reno Hotel; 1000 East 6th St., Reno NV 89512. Speaker: **Greg Pohll, Ph.D.**— Research Professor, Desert Research Institute (DRI). Topic: Hydraulic Fracturing in the Upper Humboldt River Basin – Aquifer Quality Assessment Program. Please make reservations by Tuesday, April 5, 2016 by using the following link: [https://docs.google.com/forms/d/1kDW1WIBOgA\\_Ey2e1718xFEYdvdcMva32kiy3syveiGU/viewform\[docs.google.com\]](https://docs.google.com/forms/d/1kDW1WIBOgA_Ey2e1718xFEYdvdcMva32kiy3syveiGU/viewform[docs.google.com])

**9 APRIL 2016 NPGS Geothermal Field Trip, Saturday April 9, 2016:** Reserve your spot today! Contact John Snow at: [Jsnow1@sbcglobal.net](mailto:Jsnow1@sbcglobal.net), or call him at: (775) 336-8067.

**11 APRIL 2016 Northern Nevada Section of SME Monthly meeting.** Circus-Circus Mandalay Ballroom, Reno NV. Happy Hour @ 6 pm, Dinner at 7 pm. Speaker: Brandon MacDougall, Coeur Rochester Mine. Topic: Rochester Mining District, Lovelock, NV, the First 100 years. Cost \$30/each-Member, \$35/each-Non Member. Please RSVP by Wed., April 6th to Brooke Miller [NnevSME@gmail.com](mailto:NnevSME@gmail.com)

**11 APRIL 2016 DREGS, Denver Regional Exploration Geologists' Society.** Social hour: 6:00 pm, Presentation: 7:00 p.m. at CSM Berthoud Hall, Room 241, Golden, CO. Speaker: Paul Bartos. Title: "The Nuevo Chaquiro Porphyry Cu-Au-(Mo) Deposit, Middle Cauca Belt, Colombia: DISCOVERY, Geology, Alteration, Mineralization". Contact James Piper for more information: [geopros@q.com](mailto:geopros@q.com)

**17-22 APRIL 2016** European Geosciences Union General Assembly 2016. Vienna Austria. Website: [www.egu2016.eu](http://www.egu2016.eu)

**1-4 MAY 2016** Canadian Institute of Mining, Metallurgy, and Petroleum Convention. Vancouver BC Canada. For more information please visit the website: <http://convention.cim.org/en/Vancouver/2016/Home.aspx>

**17 JUNE 2016—G.S.N. MEMBERSHIP PICNIC** hosted by the GSN's Board of Directors. Rancho San Rafael Park, Pagoda Pavillion, Reno, NV. Please RSVP to the GSN office, [gsn@gsnv.org](mailto:gsn@gsnv.org).

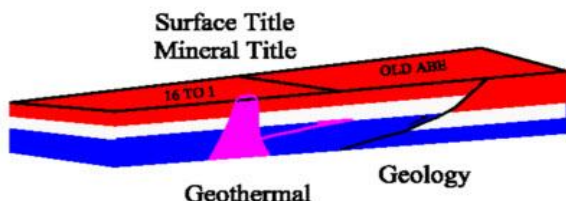
**18 JUNE 2016—GSN's Annual Golf Tournament, Washoe Golf Course, Reno, Nevada.** Shotgun start @ 1:00 PM. BBQ to follow. Many fabulous prizes will be raffled to benefit the GSN FOUNDATION. Registration form will be in the May newsletter.

## PAID ADVERTISEMENTS

### G.I.S. Land Services

Greg Ekins M.S. R.P.L. #32306 President  
Mineral Landman - Commissioned Abstractor  
"From Courthouse Records to Final Map"

Mineral Title, Geothermal Title,  
National Instrument (NI) 43-101 Title Review,  
Due Diligence  
3D AutoCad; ArcMap and MapInfo GIS



A professional firm of  
Landmen, Geologists, Draftsmen and Technicians  
Providing Abstracts of Title, Land Status and  
Exploration Geology Services  
Utilizing AutoCad - ArcMap - MapInfo - PowerPoint  
[www.gislandservices.com](http://www.gislandservices.com)

241 Ridge St., Suite 250  
Reno, NV 89501  
Ph: 775-746-8803 Fax: 775-746-8802  
email: [greg@gislandservices.com](mailto:greg@gislandservices.com)



### Hyperspectral Mineralogy

Easy Integration of Complex Data Sets



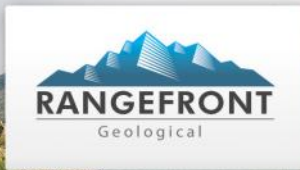
- > Spectral imaging on core and other exploration samples
- > Routine and cost-effective analysis of high sample volumes
- > Timely interpretation of large data sets
- > Integrated visual interface in ALS CoreViewer™
- > Automated mineral identification from spectral traces

For more information, scan this QR  
code or visit [www.alsglobal.com](http://www.alsglobal.com)  
Phone: +1 775-356-5395





MINERAL EXPLORATION SERVICES AND CONSULTING



Providing accurate, dependable, documented results.

We specialize in a full range of services including:

- Exploration Project Management
- Contract and Consulting Geology
- Data Compilation
- GIS & Remote Sensing
- 3D Modeling
- Disturbance Surveying
- Soil and Rock Chip Sampling
- Claim Staking
- Abandoned Mine Hazard Fencing
- Core Processing
- Warehouse Management
- Temp Services

Call us at 775.340.2395 for a free estimate on your next project

For more information on our services visit our website at [www.Rangefront.com](http://www.Rangefront.com)



JOSEPH R. ANZMAN

Exploration Geophysicist



- consulting
- interpretation
- project management
- geophysical surveys
- domestic & foreign

P.O. Box 370526  
Denver, Colorado 80237

303-519-0658  
geophjoe@gmail.com



Fire Assay, ICP-OES/MS,  
XRF, LECO, Custom Prep, BLEG

Chris Ioannakis, Managing Director, Analytical Services

Corporate Office

1500 Glendale Avenue  
Sparks, NV USA 89431-5902  
Telephone: (775) 356-0606  
Fax: (775) 356-1413

Elko Office

2320 Last Chance Road  
Elko, NV USA 89801-4852  
Telephone/Fax : (775) 738-9100

E-mail: [AALADMIN@aallabs.com](mailto:AALADMIN@aallabs.com)  
Website: [www.aallabs.com](http://www.aallabs.com)

Big Sky Geophysics

Clark Jorgensen, M.Sc.  
Geophysicist

Field Work  
Processing  
Interpretations

P.O. Box 353  
Bozeman, Montana 59771  
USA

Phone/Fax +1 (406) 587-6330  
Mobile +1 (406) 580-9718  
clark@bigskygeo.com

For more details, my background, and case studies,  
Visit my webpage at [www.bigskygeo.com](http://www.bigskygeo.com)

- Proficiency in MAG and EM Survey
- Seismic Survey
- Drill Rig Assembly & Relocation
- Rock Sampling
- Mining Support

Over 30 years helicopter pilot experience

Sunset Helicopters NW, Inc. DBA

Whisperjet, Inc.

Reno Nevada 89502

Tel. +1 775 453 9974 Mobile +1 775 219 3500

[www.WJHeli.com](http://www.WJHeli.com)



Carlin Trend Mining  
Supplies & Service

369 - 5<sup>th</sup> Street, Elko, Nevada 89801  
775.778.0668 [www.carlin-trend.com](http://www.carlin-trend.com)

Claim Staking - Soil Sampling - Land Research  
Core Cutting - Mine Hazard Fencing - Reclamation  
Project Management - Geological Consulting  
Geology & Drafting Supplies - AutoCad & GIS  
Temporary Employees in All Fields

Sister store located in Superior, Arizona  
Copper Triangle Mining Services 520-689-5200

**NEVADA EXPLORATION GIS DATA SETS**  
**HIGHEST QUALITY**

MINERAL OCCURRENCES  
 GEOCHEMISTRY  
 GEOLOGY  
 GEOGRAPHY  
 GEOPHYSICS  
 CULTURE  
 POLITICAL



website: [www.greatbasingis.com](http://www.greatbasingis.com)  
 email: [jlaravie@frontiernet.net](mailto:jlaravie@frontiernet.net)  
 phone: 775-777-8223

**NORTH AMERICAN EXPLORATION**

GEOLOGY • CLAIM STAKING • GEOCHEM SAMPLING • LANDWORK



**DAVID MORRIS**  
 PRESIDENT • GEOLOGIST

895 N. MARSHALL WAY, SUITE A  
 LAYTON, UT 84041

801.546.6453  
[DMORRIS@NAE-XPLOATION.COM](mailto:DMORRIS@NAE-XPLOATION.COM)



## Bureau Veritas Minerals

"Industry Leading Solutions for the Exploration & Mining Community".

- Geochemical, Metallurgical & Mineralogical Services
- Laser Ablation, Core Logging Services & XRF
- On Site Services



**BUREAU  
 VERITAS**

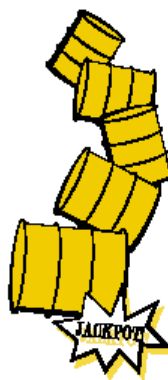
U.S. Offices | Sparks +1 775 359 6311 | Elko +1 775 777 1438 | Juneau +1 907 750 1734  
[www.bureauveritas.com/um](http://www.bureauveritas.com/um)

MINERALS



### Donate to Sky Tavern Ski Program in 2016!!

As the winter season ends for the Sky Tavern Junior Ski Program, the program is seeking tax-deductible donations from the local community. The donations can be vehicles to be used on the mountain; items such as usable skis and snowboards are welcome; and of course cash donations. These donations keep the program costs down to make it more affordable for all kids in the community. The Adaptive Program and Sky Kids for the under 6 years old crowd is growing and needs to expand into a new location. You may have been part of the program in the past, please consider donating to this outstanding program for future participants! Click this link to donate <http://www.skytavern.com/Ski-Snowboard.html>



## AAPG

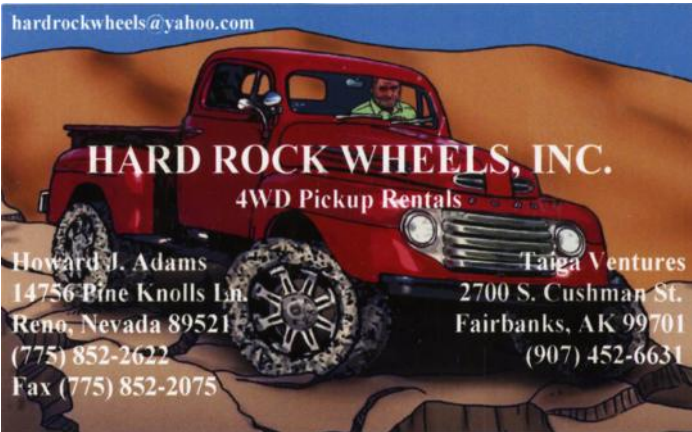
### Pacific + Rocky Mountain Joint Meeting

2-5 October 2016  
 Paris Hotel, Las Vegas



PAID ADVERTISEMENTS

hardrockwheels@yahoo.com



**JBA WORKS, INC.**

**Jo Beth Allen**  
Geologist

**GIS, Presentation Maps & Data Graphics**

GIS / CAD  
Slide & print Graphics / Illustrator & Photoshop

1055 Joshua Drive  
Reno, Nevada 89509

jobeth@jbaworks.com  
Phone: 775-303-6818



*Serving Mining in Nevada Since 1992*

**General Engineering Contractor**

- Drill Pads**
- Road Building**
- Reclamation**
- Earthwork**

**Office: 775-753-5832**  
**Mobile: 775-778-1681**  
**Mobile: 775-934-1837**  
**www.legarza.com**

**NV License #35480**  
**CA License #804120**

**Drift Exploration Drilling, Inc., 6120 Pedroli Lane, Winnemucca, Nevada**



**For more information please contact Garth Patterson @403-601-4374 or garth.patterson@telus.net**

# GEOLOGICAL SOCIETY OF NEVADA



[gsn@gsnv.org](mailto:gsn@gsnv.org) ● [www.gsnv.org](http://www.gsnv.org)  
Telephone (775) 323-3500  
Fax (775) 323-3599  
2175 Raggio Parkway, Room 107  
Reno, NV 89512 USA



View of Toronto and Lake Ontario from the CN Tower, Toronto. Mario Desilets and Jenny Lumos of Kappes, Cassidy & Assoc.. Mar. 8, 2016



Snow blanketing Sparks, Nevada. Taken looking east from TMCC/Reno (near the GSN office). March 28, 2016.