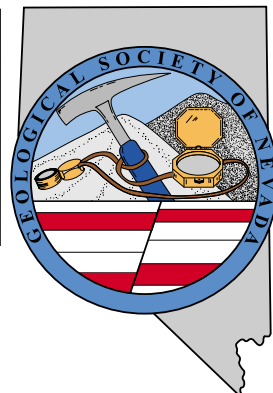


GSN NEWSLETTER

Geological Society of Nevada, PO Box 13375, Reno, NV 89507 USA, 775/323-3500, www.gsnv.org
Office location: Laxalt Mineral Research Center, Rm 266, UNR. Hours: Mon thru Fri, 9-4



August 2007, Vol. 22, No. 6

Published monthly except June and July

PRESIDENT

Greg Hill
Harvest Gold Corp. (US)
hillgreg@charter.net

VICE PRESIDENT

Marcus Johnston
Victoria Resources US Inc
marcus@apexmineralresources.com

SECRETARY

Leslie Olmstead
Agnico-Eagle (USA) Limited
loimstead@agnico-eagle.com

TREASURER

Camille Prens
Mine Development Associates
cami@mda.com

MEMBERSHIP CHAIR

Opal Adams
Enviroscientists, Inc.
ofadams@enviroincus.com

PUBLICATION CO-CHAIRS

Marilyn Miller
Consulting Geologist
marilyn.miller1@sbcglobal.net

Debbie Schneider

Schneider and Schneider Assoc
dschneider41@charter.net

OFFICE MANAGER

Rhonda Bayley
gsn@gsnv.org

CALENDAR OF GSN EVENTS

August 16, Thursday

ELKO CHAPTER. US Gold will be sponsoring the Summer Series BBQ at Duncan Little Creek Gallery beginning at 6 pm. An informal presentation by US Gold staff will follow the BBQ.

August 23, Thursday

ANNUAL DOUG SILVER SUMMER SERIES. Doug Silver, Chairman and CEO, International Royalty Corporation. Title: Viagra and Mining: Is There a Difference?. Drinks/Burgers/Hot Dogs – 6:00 pm, talk – 7:00 pm, discussion – 8:00 pm. Opal Adams and Rich DeLong's home, 9484 Spearhead Way, Reno, NV. Sponsors: Enviroscientists, Inc. and Mine Development Associates. Please bring a lawn chair and side dish to share. Call Rhonda at 775/323-3500 for more information. See page 8.

September 21, Friday

GSN MEMBERSHIP MEETING. Reno Elks Lodge, 597 Kumle Ln, Reno, NV. Drinks at 6 pm, dinner at 7 pm, talk at 8 pm. Contact Rhonda Bayley for reservations, 775/323-3500, gsn@gsnv.org.

September 21-23

GSN FALL FIELD TRIP. See page 2 for information and sign up form.

SOUTHERN NEVADA CHAPTER

Meetings to be resumed in September!

FROM THE PRESIDENT

Greg Hill, *GSN President 2007-2008*

Happy 50th birthday GSN! The Geological Society of Nevada has been carrying out its mission for half a century, and thanks to numerous hard working volunteers, is as healthy and vibrant as ever. Our outgoing president, Ellie Leavitt took the job very seriously, and it shows. Her contributions and selfless hard work for the past two years, as vice president and then president have had a very positive impact on GSN and the Society is better for her efforts. Thanks Ellie!

I feel honored to have been chosen as GSN's new president and would like to thank all of you for the opportunity to serve our membership in this important role. This year's executive committee follows a long history of dedicated volunteers comprised of many well respected and extraordinary scientists and professionals. The volunteers of the past have established the many traditions and activities through the years that make GSN what it is today. And many of them continue to play active roles in the Society.

One recent tradition is the Silver Summer Series featuring Doug Silver. This year's event will take place August

DOUG SILVER SUMMER SERIES SPONSOR



Enviroscientists, Inc.

4600 Kietzke Lane, Suite C 129, Reno, Nevada 89502

Phone: (775) 826-8822 Fax: (775) 826-8857

**Notices, Plans of Operations,
Cost Estimates, TRI, Biological Surveys,
Air Quality Permits & Audits**

Info@enviroincus.com

www.enviroincus.com

23rd at the home of Rich DeLong and Opal Adams in Reno (see announcement in this issue). Doug is a fantastic speaker and always manages to entertain and enlighten us with his views on the global mining industry.

continued on page 3



News and Announcements

GSN FALL FIELD TRIP

September 21-23, 2007

Faults, Folds, and Mineral Belts: Regional Structural Systems, Gold Mineralization, and Exploration Potential in the Great Basin

Field Trip Coordinator:

Marcus K. Johnston, Victoria Resources US Inc.

The GSN Fall field trip is intended to elucidate relationships between the regional structural framework and gold mineralization across the Great Basin. Although the ages for gold deposits in the area range from late Jurassic to Pliocene, deposits formed between 42 and 36 Ma are the most important producers, containing well over 300 million troy ounces of gold in past production and current reserves, resources, and inventories. These late Eocene deposits are also the sites for both recent discoveries and ongoing, intensifying exploration. Besides sharing common ages, late Eocene deposits share consistent relationships with regional structural systems, especially those related to low-angle thrusting and folding during the Devonian-Mississippian Antler and Permo-Triassic Sonoma orogenies, regional Mesozoic folding, and high-angle Cenozoic extensional faulting.

This field trip will unite several experts from the mining and exploration industries to present the regional structural framework of the Great Basin. The field visits will focus on late Eocene Carlin-type deposits in north-central Nevada. Barrick and Newmont have graciously provided tentative permission to visit several of their active mines along the Getchell, Battle Mountain-Eureka, and Carlin gold belts.

We are currently planning a three-day trip, with day one including an 8 am departure from Reno on September 21st, and field visits to the Twin Creeks and Getchell open pit mines in Humboldt County. We will overnight in Battle Mountain, where a regional overview of structural systems and the use of structural systematics in gold exploration will be presented. Day two will be focused on the Cortez portion of the Battle Mountain-Eureka trend, which includes parts of Lander and Eureka Counties, with field visits to the Cortez and Pipeline open pits. Day two will also include field presentations for the recently discovered Cortez Hills deposit, and current exploration activities at the adjacent Mill Canyon property. We will stay in Elko for the second night, and close out day three with a morning visit to the Gold Quarry open pit mine, along the portion of the Carlin gold belt that cuts northern Eureka County. We will be back in Reno by 5 pm on the 23rd.

The schedule of field stops is subject to change, pending operation schedules for Barrick and Newmont. Any updates and a finalized schedule will be provided in the coming months.

Please complete and submit ASAP:

Fall 2007 Field Trip Sign Up

Name _____

Daytime Phone _____

Fax _____

Company _____

Address _____

Email _____

Person to contact in case of emergency:

Name _____ Phone _____

Lodging

Single__ Double __

Roommate (or we will assign) _____

MEMBER COST:	double room	\$250.00
	single room (Limited Number)	\$310.00
*NON-MEMBER COST:	double room	\$300.00
	single room	\$360.00

*Non-members are encouraged to become members of the GSN for \$35 annual dues in order to take advantage of the reduced rates.

Amount included with this form \$ _____

Paid with Check # _____

Visa__ MC__ Exp Date _____

Credit Card # _____

Signature _____
(as it appears on card)

**Payment must be made by August 31, 2007
No refunds after August 31, 2007**

Fax: 775/323-3599 or mail to GSN office:
P.O. Box 13375, Reno, NV 89507, or email to: gsn@gsnv.org

FALL FIELD TRIP ITINERARY

Friday, September 21, 2007

- 7:30 am Meet at the UNR parking lot
- 8:00 am Bus leaves promptly at 8:00am
- 11:00 am Field stop near the Preble open pit:
regional overview of late Eocene gold belts

continued

Thanks to ENVIROSCIENTISTS, INC. for hosting the May meeting.

GSN September 21, 2007 Membership Meeting

Date: Friday, September 21, 2007

Time: Social-6:00, Dinner-7:00 (\$17), Meeting-8:00

Reservations: 775/323-3500; fax 323-3599,
e-mail gsn@gsnv.org

Deadline: Reserve by 1 pm Thursday, September 20th

Location: Elks Lodge, 597 Kumle Lane, Reno, NV

Directions: Across (W) from the Reno-Sparks Convention Center (S Virginia St), behind the Les Schwab Tire Center

Speaker/topic: See September newsletter for abstract.

FALL FIELD TRIP ITINERARY *(continued from page 2)*

11:45 pm Lunch – en route
12:15 pm Twin Creeks mine tour
4:00 pm Bus leaves Twin Creeks for Getchell
4:30 pm Getchell mine complex overview
5:30 pm Bus leaves Getchell for Battle Mountain
7:00 pm Dinner
8:00 pm Talk: Regional Structural Systems and the
Use of Structural Systematics in Gold
Exploration

Overnight lodging in Battle Mountain

Saturday, September 22, 2007

Breakfast on your own

8:00 am Bus leaves Battle Mountain for Reese River
Valley
8:30 am Overview of regional structures in the northern
Shoshone Range
9:30 am Bus leaves Reese River Valley for Pipeline
11:00 am Overview of the Cortez District from Pipeline
11:45 am Lunch
12:15 pm Pipeline mine tour
3:15 pm Bus leaves Pipeline for Cortez
3:45 pm Cortez mine overview, with field presentations
for Cortez Hills and Mill Canyon
5:15 pm Bus leaves Cortez for Elko
7:30 pm Dinner

Overnight lodging in Elko

Sunday, September 23, 2007

Breakfast on your own

8:00 am Bus leaves Elko for Gold Quarry
9:00 am Gold Quarry mine tour
12:30 pm Bus leaves Gold Quarry for Reno, lunch en
route
5:00 pm Bus arrives at the UNR parking lot

Price includes transportation, overnight lodging on nights of September 21 and 22, snacks and drinks, lunches, dinners, and guidebook.

Reservations are on a **first-come, first-served basis**; attendance is limited to **45 participants**; **only a small number of single occupancy rooms will be available.**

Payment and clearance forms must be received in the GSN office by August 31, 2007 to guarantee the reservation.



FROM THE PRESIDENT *continued from page 1*

As the GSN enters its 51st year it is appropriate to take a look back. Therefore, in September, the first Reno dinner meeting of the year will feature a talk by Roger Steininger, our resident GSN historian, past president, and current Foundation Chair and Executive Director. Roger's talk will describe the evolution of the Society over the past 50 years and highlight advancements in our knowledge and understanding of the geology of Nevada and the Great Basin during this period. Look for an abstract of Roger's talk in the upcoming September Newsletter.

In July, we hired a new Office Manager to take over for Laura Ruud who has provided great service to GSN for many years. Rhonda Bayley has taken the reins and is working hard to fill Laura's shoes. Immediately, Rhonda has shown her considerable abilities and we are very happy to have her. If you find yourself at UNR, stop by the GSN office and say hello, Room 266, Laxalt Mineral Research Center. The Office Manager position has been expanded to full time as GSN continues to grow. Thanks to the remarkable generosity of Lance Taylor, President of Geotemps Inc., we have been able to make this necessary expansion without straining our budget. Thank you Lance!

This year will see many interesting GSN events including monthly talks in Reno, Elko, Winnemucca, and Las Vegas. Spring and fall field trips, the GSN picnic, golf tournament, and other happenings will make for a fun and exiting year for GSN and I look forward to all that it will bring.

ACTIVITY UPDATE

Mike Brady, June 2007

www.activityupdate.com

NEVADA

Barrick Gold Corp. announced it filed suit for fraud against Au Mining Inc. alleging that Au Mining delivered material from the Golden Wonder Mine, Colorado to its Goldstrike processing plant stating that it averaged 28 opt Au. In contrast, Barrick determined that the material actually contained "very substantially less gold". *N.M.:* May 28

Great Basin Gold Ltd. announced that based on recent drill results at the Hollister Project, resources aggregate 561,000 tons @ 1.048 opt Au, 6.12 opt Ag measured; 341,000 tons @ 1.009 opt Au, 5.11 opt Ag indicated and 803,000 tons @ 1.088 opt Au, 3.95 opt Ag inferred. (was 717,200 tons @ 1.295 opt Au, 7.03 opt Ag inferred)

M.J.: May 25

Cameco Corp. announced it purchased a 10% interest in Western Uranium Corp. for \$18,600,000. (Virgin Valley = 19,800,000 tons @ 0.030% U3O8 inferred)

M.J.: May 25

Newmont Mining Corp. announced it terminated its interest in the Converse Project of Metallic Ventures Gold Inc. (resource = 262,350,000 tons @ 0.015 opt Au measured+indicated)

Press Release: June 5

Atna Resources Ltd. announced that recent drill results at the Beowawe Project include 64-70.1 meters @ 0.006 opt Au (PBR-004); 44.2-54.9 meters @ 0.006 opt Au (PBR-005) and 61-67.1 meters @ 0.009 opt Au (PBR-007A).

Press Release: June 6

Golden Odyssey Mining Inc. announced it acquired an option to earn a 100% interest in the Washiki Property from private interests for \$50,000 cash and 50,000 shares.

Press Release: May 31

Midway Gold Corp. announced that recent drill results at the Pan/Boulders Project include 140-155 feet @ 0.010 opt Au (07-02); 140-215 feet @ 0.060 opt Au (07-04) and 235-350 feet @ 0.023 opt Au (07-03). (resource = 17,900,000 tons @ 0.019 opt Au indicated)

Press Release: June 5

Minterra Resource Corp. announced it terminated its interest in 9 separate properties owned by Mill City Gold Corp.

Press Release: May 30

NewWest Gold Corp. announced that recent drill results at the Sandman/Abel Knoll Project include 185-195 feet @ 0.021 opt Au (AK06-24); 230-275 feet @ 0.063 opt Au (AK06-26); 180-200 feet @ 0.016 opt Au (AK06-27) and 202-536.5 feet @ 0.075 opt Au (AK07-28C).

Press Release: June 4

PacMag Metals Ltd. announced it acquired an option to earn a 100% interest in the Ludwig, Douglas Hill and Castings properties from private interest for \$50,000/year in advance royalty payments. *Press Release:* June 14

U.S. Gold Corp. announced that recent drill results at the Keystone Project include 662-672 feet @ 0.013 opt Au (KS01).

Press Release: June 12

U.S. Gold Corp. announced that recent drill results at the Tonkin/Rooster Project include 105-115 feet @ 0.013 opt Au (62); 110-120 feet @ 0.013 opt Au (80); 450-490 feet @ 0.014 opt Au (84); 262.5-659 feet @ 0.028 opt Au (87); 259-290.5 feet @ 0.035 opt Au (94) and 183.5-207 feet @ 0.022 opt Au (96). (reserve = 10,637,000 tons @ 0.061 opt Au proven+probable)

Press Release: June 12

U.S. Gold Corp. announced that recent drill results at the Tonkin/Southern Area Project include 335-355 feet @ 0.060 opt Au (77); 290-320 feet @ 0.016 opt Au (79); 209-240 feet @ 0.024 opt Au (88); 0-34 feet @ 0.053 opt Au (98); 0-30 feet @ 0.131 opt Au (99) and 260-271.5 feet @ 0.022 opt Au (101). (reserve = 10,637,000 tons @ 0.061 opt Au proven+probable)

Press Release: June 12

Fortune River Resource Corp. announced that recent drill results at the Wind Mountain Project include 168-175 meters @ 0.009 opt Au (WM07-06); 0-37 meters @ 0.010 opt Au (WM07-07); 218-230 meters @ 0.013 opt Au (WM07-09) and 0-14 meters @ 0.018 opt Au (WM07-12).

Press Release: June 27

Idaho General Mines Inc. announced that recent drill results at the Mt. Hope Project include 405-1,235 feet @ 0.139% Mo (MH-183); 365-1,270 feet @ 0.145% Mo (MH-184); 625-1,330 feet @ 0.125% Mo (MH-185); 635-1,340 feet @ 0.121% Mo (MH-186) and 745-1,380 feet @ 0.118% Mo (MH-187). (reserve = 330,000,000 tons @ 0.098% Mo proven+probable)

Press Release: June 29

AuEx Ventures Inc. announced that recent drill results at the West Pequop Project include 50-55 feet @ 0.025 opt Au (WN-068); 65-70 feet @ 0.126 opt Au (WN-069); 50-60 feet @ 0.045 opt Au (WN-071); 230-250 feet @ 0.035 opt Au (WN-071) and 565-645 feet @ 0.169 opt Au (WN-073).

Press Release: June 28



Fire Assay
ICP - OES
ICP - MS
AAS
Custom Preparation
Bullion Analyses
BLEG

Corporate Office
1500 Glendale Avenue
Sparks, NV U.S.A. 89431-5902
Telephone (775) 356-0606
Fax (775) 356-1413

Chris Ioannakis, Managing Director,
Analytical Services

Elko Office
2320 Last Chance Road
Elko, NV U.S.A. 89801-4852
Telephone/Fax (775) 738-9100

E-mail: AALADMIN@aallabs.net
Website: www.aallabs.com



**American
Assay &
Environmental
Laboratories**

MINERAL EXPLORATION SERVICES

**SOIL SAMPLING
CLAIMSTAKING
PROPERTY EVALUATION
MINE HAZARD FENCING**

5655 Riggins Ct., #15, Reno, NV 89502
Tel: (775) 954-1082 Fax: (775) 829-6882
email: day@mineralexploration.com

SERVICIOS HIDROGIS
GEOGRAPHIC INFORMATION SYSTEMS

Dirk Masuch Oesterreich (Geologist, Proprietor)
A.P. 107; Carretera a Galeana, km. 4
Linares, Nuevo León, México, C.P. 67700
Tel.: +52 821 212 5908, +52 821 212 8311
www.servicioshidrogis.com



Please ask for our maps and GIS database of stock
exchange listed mining companies in Nevada
info@servicioshidrogis.com



**Carlin Trend Mining
Supplies & Service**

www.carlintrend.com

369 5th St., Elko, NV 89801
(775) 778-0668, Fax: (775) 778-0687, carlintrend@frontiernet.net

Geological Consulting - Claim Staking - Soil Sampling
Geology & Drafting Supplies - AutoCad & GIS
Temporary Employees In All Fields

ALS Chemex



We are a global analytical testing company
serving the mining and mineral exploration
industry in Nevada and around the world.

We specialise in:

- Assaying and geochemical analysis for mining and mineral exploration projects
- On-site contract mine laboratory management
- Environmental monitoring of mining operations
- Acid mine drainage studies

Contact our laboratories in Nevada to find out how we can
help you with all of your project's analytical needs.

RENO, NV
Phone: 775 356 5395

ELKO, NV
Phone: 775 738 2054

WINNEMUCCA, NV
Phone: 775 625 4192

www.alschemex.com

*Right solutions....
....Right partner*

Sample Bags

HUGE INVENTORY  LOW, LOW PRICES

NEW ADDRESS!
LEGEND, INC.

988 Packer Way
Sparks, NV 89431

Off Glendale east of McCarran
phone: (775) 786-3003
fax: 786-3613
www.Lmine.com
email: info@Lmine.com



Enviroscientists, Inc.

4600 Kietzke Lane, Suite C 129, Reno, Nevada 89502
Phone: (775) 826-8822 Fax: (775) 826-8857

**Notices, Plans of Operations,
Cost Estimates, TRI, Biological Surveys,
Air Quality Permits & Audits**

Info@enviroincus.com

www.enviroincus.com



JOSEPH R. ANZMAN
Exploration Geophysicist

- consulting
- interpretation
- project management
- geophysical surveys
- domestic & foreign

P.O. Box 370526
Denver, Colorado 80237
303-337-4559
telephone/fax

WR WESTERN RECON
and
Mineral Exploration Inc.

Claim Staking / Soil Sampling / Grids
Experienced / Dependable/ Trimble GPS
Gary Castagne 775-250-4879
John Fernandez 775-815-2587

www.westernrecon.com

RENT A PIMA!!

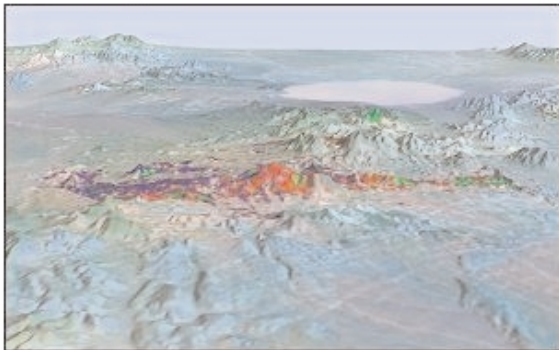


IDENTIFY and MAP ALTERATION
MINERALS IN THE FIELD and CORE

CONTACT US FOR Rentals and Services

Spectral International, Inc
303 403 8383 pusa@rmi.net
www.specmin.com

EXPLORATION with ASTER



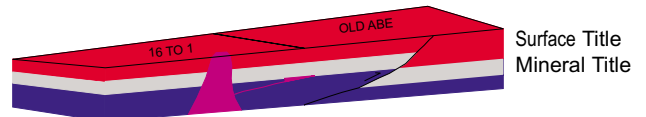
Alteration Image, Goldfield, Nevada

- **CUSTOM CORRECTED DATA**
- **ALTERATION IMAGERY**
- **EXTENSIVE GLOBAL ARCHIVES**

WWW.ASTERIMAGES.COM
email: pusa@rmi.net
dwc@overhill-imaging.com

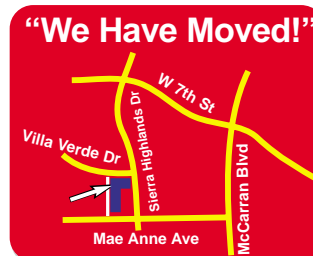
GIS Land Services

Greg Ekins M.S. R.L.P. #32306 President
Mineral Landman - GIS Cartographer



“From Courthouse Records to Final Map”

- Land Status Maps
- Geologic
- Geo Chem
- AutoCad Map
- Arc Map
- Mapinfo
- Discover
- Power Point



5365 Mae Anne Ave B-14A
Reno, NV 89523
P:775-746-8803
P:775-746-2110
F:775-746-8802
E:greg@gislandservices.com

www.gislandservices.com

Big Sky Geophysics

Clark Jorgensen, M.Sc.
Geophysicist

*Field Work
Processing
Interpretations*

P.O. Box 353
Bozeman, MT 59771
USA

Phone: (406) 587-6330
Fax: (406) 587-6394
Mobile: (406) 580-9718
clark@bigskygeo.com

**For more details, my background, and case studies,
visit my webpage at www.bigskygeo.com**



DIXIE BULLOCK
DISTRICT MANAGER

WILMA HATTER
SERVICE REPRESENTATIVE
HATTERW@SOSSTAFFING.COM

390 East Moana Ln., Ste. 2
RENO, NV 89502
T. 775.331.5227 F. 775.323.7772
WWW.SOSSTAFFING.COM

A Division of SOS Staffing Services, Inc.



**ENVIRONMENTAL SERVICES
FOR THE MINING INDUSTRY**

environmental consultants, inc.

- Baseline Studies
- Environmental Permitting
- Monitoring & Compliance
- Reclamation & Closure Plans
- Investigation & Remediation

**Elko Location
775-738-8766**

www.jbrenv.com

Reno and Salt Lake City locations

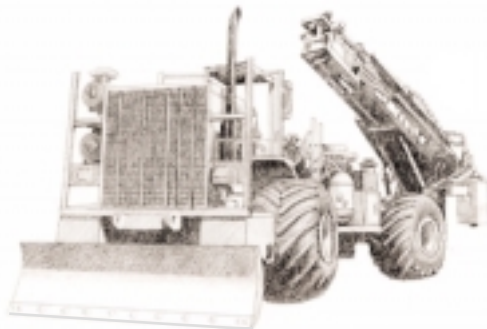
GSN Newsletter Monthly Advertising Rates

Business card size (3 1/2 x 2'')	\$ 50.00
Quarter page (3 1/2 x 4 3/4'')	150.00
Half page (4 3/4 x 7 1/2'')	300.00
Classified ads \$10/line (up to business card size)	

For an advertising form, call the GSN office at 775/323-3500 or fax 323-3599. Digital or text ads must be received by the 20th of the month to appear in the following month's newsletter.



DIVERSIFIED DRILLING, LLC



*Providing Drilling Services To The
Mining/Metals Industry Since 1980*

3650 Grant Creek Road
Missoula, Montana 59808
Phone: (406) 542-1010 Fax: (406) 542-5065
www.diversifieddrilling.com

GSN FOUNDATION UPDATE

Roger Steininger, *GSN Foundation Executive Director*

In a moment of lunacy, I volunteered to serve as the GSN Foundation Executive Director and Chair of the Foundation Board of Directors. Joining me on the Board are Dieter Krewedl, Kel Buchanan, Camille Prens, Clancy Wendt, D.D. LaPointe, and Rachel Dolbier. During this boom in our industry we have the opportunity to grow our endowment to supply continual funding for our several programs. Our goal is to see this happen so the Foundation can earn sufficient income from its investments to fully fund the K-12 Field Trip program, scholarships at several Nevada colleges and universities, support to the DeLaMare library, and funding for the NBMG mapping grant program. We need all of our members to step forward in any way possible to help build our endowment.

In the past few months we received two significant donations. RTZ closed their Reno office and donated a significant sum from the sale of equipment and furnishings. The Mulligan program at the GSN Golf Tournament generated over \$2,000 for the foundation. Thank you to tournament participants and RTZ for these contributions.

We need innovative ways to raise funds such as that developed by RTZ. Any suggestions along these lines are welcome.

DOUG SILVER SUMMER SERIES – AUGUST 23, 2007

VIAGRA AND MINING: IS THERE A DIFFERENCE?

As the minerals industry enters the fifth year of the Supercycle, there is a growing anxiety that the end may be near. We have seen metal prices rise parabolically, Shares prices have rocketed to undefendable highs and new discoveries and mines are beginning to flood the market. However, Chinese and Indian consumption patterns also continue to escalate and the World seems destined to be in perpetual need of metals. The wild cards may be the plethora of exogenous and indigenous forces that are influencing the industry. For instance, the game board will surely change when the U.S. elects a new president. These and other topics of incredible importance will be discussed at the Silver Summer Series.

Directions for Silver Session:

From: Reno/Tahoe International Airport (RNO) 2001 E Plumb Ln, Reno, NV 89502 to 9484 Spearhead Way, Reno, NV 89506-9757.

Driving Directions:

1. Start out going WEST on E PLUMB LN toward TERMINAL WAY. (0.09 miles)
 2. Turn RIGHT onto DURHAM RD. (0.25 miles)
 3. Merge onto US-395 N. (6.91 miles)
 4. Take the GOLDEN VALLEY ROAD exit-EXIT 73. (0.49 miles)
 5. Keep RIGHT at the fork to go on E GOLDEN VALLEY RD. (1.35 miles)
 6. Turn LEFT onto SPEARHEAD WAY (portions unpaved). (0.77 miles)
 7. End at 9484 Spearhead Way, Reno, NV 89506-9757.
- Total estimated time: 14 min. Total distance: 9.86 miles.

**Sponsors are Enviroscientists, Inc. and
Mine Development Associates**

UPCOMING EVENTS

August 16, Thursday – ELKO CHAPTER. US Gold will be sponsoring the Summer Series BBQ at Duncan Little Creek Gallery beginning at 6 pm. An informal presentation by US Gold staff will follow the BBQ.

August 23, Thursday – ANNUAL DOUG SILVER SUMMER SERIES. Doug Silver, Chairman and CEO, International Royalty Corporation. Title: Viagra and Mining: Is there a Difference?. Drinks/Burgers/Hot Dogs – 6:00 pm, talk – 7:00 pm, discussion – 8:00 pm. Opal Adams and Rich DeLong's home, 9484 Spearhead Way, Reno, NV. Sponsors: Enviroscientists, Inc. and Mine Development Associates. Please bring a lawn chair and side dish to share. Call Rhonda at 775/323-3500 for more information.

September 21, Friday – GSN MEMBERSHIP MEETING. Reno Elks Lodge 597 Kumble Ln, Reno, NV, Drinks at 6pm, dinner at 7 pm, talk at 8 pm. Contact Rhonda Bayley for reservations, 775/323-3500, gsn@gsnv.org.

September 24-30 – Arizona Geological Society - Ores & Orogenesis - Circum-Pacific Tectonics, Geologic Evolution, and Ore Deposits – a symposium in honor of William R. Dickinson. Full details on the symposium can be viewed at www.agssymposium.org/.

September 22-24, 2008 – Mine Expo – Las Vegas Convention Center – Visit www.minexpo.com for more information.

GSN GOLF TOURNAMENT WRAP-UP

The annual GSN golf tournament was held on Saturday, June 23, 2007 at Washoe Golf Course. We had a very good turnout this year, with 95 golfers and an additional 30 guests for the BBQ. As in the past few years, the tournament was fully sponsored by **Lance Eklund of Eklund Drilling Company**. Many thanks go to Lance for his generous support and making this a special event with good food, cold drinks and generous prizes. A big thank you also to **Cami and Neil Prenn of Mine Development Associates** for providing beer from Great Basin Brewing Company.

This was the second year we used the tournament as a fundraiser for the GSN Foundation. Mulligans (a redo of a poor shot) were available for players to purchase and raised \$2080. Thank you to all of the players who stepped up and supported the Foundation.

We would also like to thank the following people for their help in organizing the event and taking care of all of the details on the day of the tournament:

Marty Dennis
Ruth Carraher
John Lukens
Nancy Wolverson
Bob Felder

Cami Prenn
Paul Muto
Cheryl Lukens
Eric Ruud

List of Winners:

1st Place Team – Marty Dennis, Dave Harvey, Al Frank

2nd Place Team – Paul Muto, Ruth Carraher, John Lukens, Cheryl Lukens

3rd Place Team – Bob Wasiliew, John Thiel, Mike Braun, Dave Williams

Longest Drive (men) – Mark Reischman

Longest Drive (women) – Cheryl Lukens

Closest to Hole (men) – Steve Jones, Dave Williams

Closest to Hole (women) – Ruth Carraher



GSN MEMBERS' NEWS AND ANNOUNCEMENTS

► **New Office Manager and Office Hours.**

Hello everyone! Allow me to introduce myself. My name is Rhonda Bayley and I am the new GSN Office Manager. The GSN office hours have changed. The office is now open 9 am to 4 pm Monday through Friday. We have also changed the email address for GSN effective immediately. The new email address is gsn@gsnv.org. Please make note of this change.

I look forward to serving the GSN membership.

► **Southern Nevada Chapter News.**

The Southern Nevada Chapter held an Executive Council Meeting on July 9, with all 2007-2008 officers in attendance. Items discussed included topics for upcoming meetings, activities/events for the year, and potential new meeting locations. Meetings will again be held the last Thursday of each month, with the exception of December. Meetings and the Southern Nevada Chapter Newsletter will resume in September.

► **New Publications at NBMG.**

SP34 - Weather and Climate of the Reno-Carson City-Lake Tahoe Region by Brian F. O'Hara, Gary E. Barbato, John W. James, Heather A. Angeloff, and Tom Cylke, 2007, **\$20.00**, for more information about this book (including sample pages) or to order, please click here:

<http://www.nbmng.unr.edu/sales/pbsdtls.php?sku=SP34>

Not new, but we now have this for sale from Nevada Petroleum Society: NPS21 - Carboniferous-Permian Hydrocarbon System, Rocky Mts-Great Basin (RMAG Open-File Report) by James A. Peterson, 2001, updated 2003 (CD-ROM only) **\$15.00**, to order, please click here:

<http://www.nbmng.unr.edu/sales/pbs.php?ser=nps>

New USGS site for locating topographic maps that you need: <http://store.usgs.gov/locator>. NBMG stocks paper copies of all USGS topographic maps of Nevada and many nearby areas of California. We also sell many of the USGS geologic maps of Nevada. You can order them through:

<http://www.nbmng.unr.edu/sales/pbs.htm>.

We can also print **on demand paper copies** of any of the topographic maps all **across the US** that you can view on the USGS map locator (USGS link above). Currently these

maps from states other than Nevada and California are not yet available for purchase through our shopping cart - you will need to phone us for those custom jobs. It would be best if you could phone in an order ahead of time if you plan to come in our office at UNR to pick them up.

USGS OFR 2007-1156 - Water Resources of the Basin and Range Carbonate-Rock Aquifer System, White Pine County, Nevada, and Adjacent Areas in Nevada and Utah - Draft Report:

<http://pubs.er.usgs.gov/usgspubs/ofr/ofr20071156>

"Public comments regarding this report will be accepted for 60 days beginning June 1, 2007." Related reports at:

<<http://www.usgs.gov/newsroom/article.asp?ID=1688>>

You may place an order or check for shipping charges through our shopping cart at:
<http://www.nbmng.unr.edu/sales.htm>
or by calling 775/682-8766.

► **Geology Student Murdered in Colorado**

Please be very careful when out in the field mapping. You can read the full story at www.denverpost.com/search/ci-6246081

Deaths

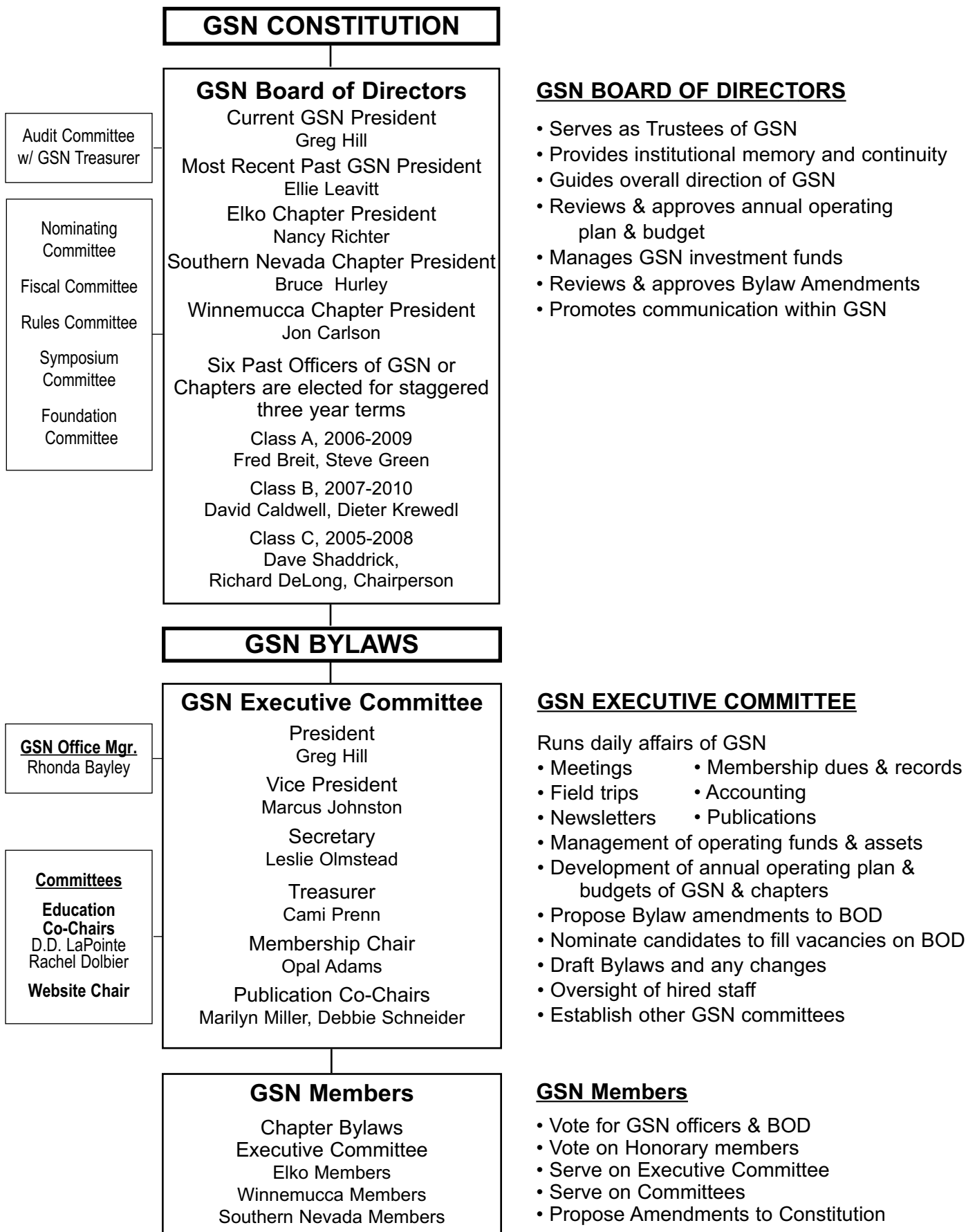
► John C. Wilson passed away on Thursday morning, June 21, 2007. He was ill with Parkinson's disease for several years and spent the last 18 months in a nursing facility.

John was Director of Kennecott's Exploration Services 1967 to 1977 and under his leadership the group gained widespread industry recognition for excellence in geologic research, and development of geochemical and geophysical technology. John also served as Manager, Domestic Exploration for the Anaconda Company 1978 to 1985. John was 75; a memorial service is being planned for early Fall.

Members are encouraged to keep us informed about their own career related moves and awards, and deaths of GSN colleagues. Your information needs to be received by Rhonda at gsn@gsnv.org by the 21st of each month.

2007/2008 GSN ORGANIZATIONAL CHART

WITH DUTIES OF THE BOARD OF DIRECTORS AND EXECUTIVE COMMITTEE





GEOLOGICAL SOCIETY OF NEVADA

7/07

P.O. Box 13375, Reno, NV 89507 USA

Phone (775) 323-3500 • Fax (775) 323-3599 • gsn@gsnv.org • www.gsnv.org

Offices are located on the University of Nevada, Reno Campus, Laxalt Mineral Research Center, Room 266
Office hours: 9-4 pm, Monday through Friday

The Geological Society of Nevada (GSN) is a non-profit, educational organization whose principal objective is to promote the advancement of geological sciences, especially as they relate to Nevada. GSN supports the dissemination of information through meetings, field trips, publications and academic endeavors. Membership is open to geologists, geophysicists, geochemists, engineers, educators, students, prospectors or anyone else with an interest in the geological sciences and/or the goals of the GSN.

The GSN membership year begins in June. Annual dues of \$35.00 (\$17.50 for full time students) are due in the fall. The GSN sponsors a Field Trip in the Fall and one in the Spring of each year. Monthly meetings are held on the third Friday of each month, September through May. The following are sanctioned Chapters of the GSN: Elko Chapter, based in Elko; Southern Nevada Chapter, based in Las Vegas, and the Winnemucca Chapter, based in Winnemucca.

Please remember the GSN Foundation when renewing. Foundation dollars are used for the Kindergarten through 12th grade Field Trip Grant Program, Nevada Mapping Grants and University of Nevada scholarships.

MEMBERSHIP APPLICATION/RENEWAL		DATE _____
NAME: _____		POSITION/TITLE _____
CONSULTANT <input type="checkbox"/> COMPANY NAME: _____		
STUDENT <input type="checkbox"/> UNIVERSITY: _____		
ADDRESS: _____		
CITY: _____		STATE/PROVINCE: _____
ZIP: _____ - _____		COUNTRY: _____
PHONE: WORK _____		FAX _____
CELL _____		RESIDENCE _____
E-MAIL: _____		WEB SITE: _____
<input type="checkbox"/> I WOULD LIKE TO HAVE AN ASTERISK BY MY NAME IN THE DIRECTORY INDICATING I AM AVAILABLE FOR CONSULTING.		
<input type="checkbox"/> I HAVE MET THE LICENSING REQUIREMENTS AND WANT "QP" (QUALIFIED PERSON) BY MY NAME IN THE DIRECTORY.		
I authorize GSN to send to me, via email: GSN announcements, publication updates, employment opportunities, etc.		Yes <input type="checkbox"/> No <input type="checkbox"/>
<input type="checkbox"/> Regular Membership Dues - email newsletter \$35.00	<input type="checkbox"/> Honorary	\$ _____
<input type="checkbox"/> Regular Membership Dues - hardcopy newsletter via postal service \$40.00	<input type="checkbox"/> Honorary	_____
<input type="checkbox"/> International Membership Dues - email newsletter only \$35.00		_____
<input type="checkbox"/> International Membership Dues - hardcopy newsletter via postal service \$50.00		_____
<input type="checkbox"/> Student Membership Dues - email newsletter only \$17.50		_____
Optional Chapter Affiliation (to be eligible for chapter voting, choose one)		
<input type="checkbox"/> Elko Chapter		
<input type="checkbox"/> Southern Nevada Chapter		
<input type="checkbox"/> Winnemucca Chapter		
Student Dinner Fund		
<input type="checkbox"/> I wish to donate to the GSN Student Dinner Fund _____		
GSN Foundation		
<input type="checkbox"/> I wish to donate to the GSN Foundation _____		
(Donated funds will be used for unrestricted grants and scholarships unless otherwise specified _____.)		
		TOTAL DUE \$ _____
Payment: <input type="checkbox"/> Check # _____ <input type="checkbox"/> Cash <input type="checkbox"/> Visa <input type="checkbox"/> MC Card # _____		
Exp. Date _____ Signature (as it appears on card) _____		
Return with payment to: Geological Society of Nevada, P.O. Box 13375, Reno, NV 89507 Fax to 775/323-3599, email gsn@gsnv.org		

1st Annual Elko Gem and Mineral Show

September 15 & 16, 2007



FEATURE EVENT:
**Premier offering of crystallized Malachite
from a NEW Arizona locality**

Choice Specimens from Historical Arizona Mines

Other Events:

- Book signings
- Mineral seminars for novice and advanced collectors
- Labs

Elko Convention Center
700 Moren Way, Elko, Nevada

**Booth Space Available
Early-Bird Special- \$375 by
June 1, 2007**

Contact: Cordilleran Gems & Minerals LLC
c/o Carlin Trend Mining Services
369 Fifth Street
Elko, Nevada 89801-3705
Telephone: 775-778-0668
FAX: 775-778-0687
elkogemandmineralshow@frontiernet.net

GEOLOGICAL SOCIETY OF NEVADA



gsn@gsnv.org • www.gsnv.org
Telephone (775) 323-3500 FAX (775) 323-3599
Post Office Box 13375
Reno NV 89507
USA

NON PROFIT
ORGANIZATION
U.S. POSTAGE
PAID
RENO, NV
PERMIT NO. 931



PROFESSIONAL STAFFING FOR THE MINERALS INDUSTRY

ENGINEERS GEOLOGISTS LABORERS CLERICAL STAFF TECHNICIANS
EQUIPMENT OPERATORS MANAGERIAL STAFFING EXECUTIVE RECRUITMENT

AS THE ESTABLISHED LEADER IN PROFESSIONAL PERSONNEL SERVICES TO THE MINING AND MINERALS INDUSTRY, GEOTEMPS STANDS WITH THE INDUSTRY AT PUBLIC HEARINGS, IN GOVERNMENT LOBBY EFFORTS, FOR WRITE-IN CAMPAIGNS, WITH BUSINESS DONATIONS, AND WITH INDUSTRY ASSOCIATIONS.

RENO

775-746-7146
970 CAUGHLIN XING
SUITE 102, 89509
FAX: 775-746-7156

ELKO

775-738-4707
557 WEST SILVER ST.,
SUITE 201A, 89801
FAX: 775-738-0409

ELY

775-289-6448
725 AVENUE K,
SUITE B, 89301
FAX: 775-289-6472

TUCSON

520-292-1000
4760 NORTH ORACLE RD.,
SUITE 200, 85705
FAX: 520-292-9100

WINNEMUCCA

775-625-1555
FAX: 775-625-1556
www.geotemps.com
mining@geotemps.com