

GEOLOGICAL SOCIETY OF NEVADA NEWSLETTER

Geological Society of Nevada, 2175 Raggio Parkway, Room 107, Reno, NV 89512
(775) 323-3500 - Hours Monday -- Friday 8-3
Website: www.gsnv.org • E-mail: gsn@gsnv.org



August 2009, Vol. 24, No. 6

Published monthly except June and July

PRESIDENT

Mike Ressel
Kinross Gold USA, Inc
mikeressel@sbcglobal.net

VICE PRESIDENT

Peter Vikre
US Geological Survey
pvikre@usgs.gov

SECRETARY

Steve Carroll
Schlumberger Water Services
scarroll2@slb.com

TREASURER

Bob Kastelic
Consulting Geologist
bob_kastelic@yahoo.com

MEMBERSHIP CHAIR

Dave Emmons
Kinross Gold USA, Inc
demmons@sbcglobal.net

PUBLICATION CHAIR

Marilyn Miller
AuEx Ventures, Inc.
marilyn.miller1@sbcglobal.net

OFFICE MANAGER

Kathy Sestanovich
gsn@gsnv.org

GSN has officially moved to NBMG's Great Basin Science Sample and Records Library at The Desert Research Institute Campus.

CALENDAR OF GSN EVENTS

**August 20
Thursday**

GSN BOARD OF DIRECTORS

(Quarterly Meetings—February, May, August, November)

The summer quarterly meeting of the GSN Board of Directors will be held at the Little Creek Gallery, 516 Commercial Street, Elko, Nevada from 2:00 PM—4:00 PM

**August 20
Thursday**

ELKO CHAPTER *(Every 3rd Thursday of the month)*

The Summer BBQ will be held at the Little Creek Gallery, 516 Commercial Street, Elko, Nevada. Event starts at 6:00 PM, which is sponsored by EnvirosScientists, Inc

**August 27
Thursday**

ANNUAL DOUG SILVER SUMMER SERIES

5900 Philoree Lane, Reno, NV 89511

Doug Silver, Chairman and CEO of International Royalty Corporation. Title:

"Evidence that the Market Correction Is Underway" Talk at 6:00 pm. [See page 3 for new information.](#)

**All other GSN meetings
will begin again in September**

FROM THE PRESIDENT

Mike Ressel, *GSN President 2009-2010*

August. Mere mention of the eighth month in Nevada evokes images of sun, smoke, dust, and parched ground, all of which revolve around a central theme of heat. Following a cooler-than-normal early summer, the heat is on in the Silver State. I was recently reminded that Nevada has only two seasons: dust and mud. August sits squarely in the dust season, and anyone who has swum through a bug dust-laden Nevada two-track in August knows full well of its billowy, blinding, suffocating, fluid-like, might I add, strangely beautiful, character. Beautiful, that is, until the engine ceases and the walk begins. Despite the heat we equate with August, it is also a turning point we recognize more through past experience than any perceived physical change.

August is also time for the traditional turning of officers and the start of a new year at GSN. We owe a debt of gratitude to outgoing officers for their substantial time and effort invested into GSN. Marcus Johnston, D.D. LaPointe, Opal Adams, and Neville Rhoden did a terrific job last year, and it's our hope as

Annual Doug Silver Summer Series - 2009

Cunninghams' Backyard
5900 Philoree Lane
Reno, NV 89511

Please RSVP to Kathy at the GSN office
gsn@gsnv.org or call 775-323-3500

[See page 3 for new information](#)

(Continued on page 2)

News and Announcements

(Continued from page 1)

incoming and continuing officers to do equally well. I emphasize that GSN is a volunteer organization and that its existence and value lie in the commitment of its members. GSN attained a milestone of 1,060 members last year. That's a remarkable statistic in a state where our membership tops the population of some of the rural towns in which we operate. The collective work experience of our membership amounts to something measureable on a geologic scale, and some might quip that the age of some of our beloved members might also be measured on such a scale. On a younger note, we thank Geotemps and Lance Taylor, who've generously supported our students, who now number at least 103. It's great to see students and young geologists involved in GSN activities, and increasing participation among this segment of GSN should be our collective goal as a society. It feels longer, but Kathy Sestanovich was hired just a year ago and has settled into her duties as office manager. Kathy has re-designed the website, compiled the directory, and had a hand in nearly every day-to-day GSN matter. Likewise, Laura Ruud continues to act behind-the-scenes as our institutional knowledge guru. We thank both for jobs well done.

Acronyms abounding, GSN established new roots in June at NBMG's new facility at DRI. Coined the Great Basin Science Sample and Records Library, or GBSSRL, this mouthful of a facility serves as repository for Nevada geoscience data and samples. The new GSN digs, including our headquarters, symposium office, and warehouse are the gift of NBMG, whose generosity goes well beyond any and all expectations. Huge thanks go to Jon Price and NBMG for this benevolent and long-lasting support. Please stop by and browse the racks. The facility has plenty of free parking and is easily accessible via the Parr Boulevard exit off Highway 395.

September's kick-off meeting in Reno will include a talk by Scott Price, who will discuss a novel hypothesis on the structural significance of the Battle Mountain-Eureka trend. Hope to see you at the Elks Lodge on September 18th!

Finally, in May, GSN plays host to its sixth symposium, truly a Nevada geological showcase. The theme is Great Basin Evolution and Metallogeny, and the venue will follow in the tradition of excellent technical programs, field trips, and short courses, and yes, camaraderie, food, and beverage. Planning for the event is in full swing, and I encourage you and your organization to participate through scientific contributions, sponsorships, exhibits, and volunteer opportunities. Please help get the word out to colleagues far and wide on this our flagship event.

Dustfully yours,

Mike Ressel

The Great Basin Science Sample and Records Library (GBSSRL) has a new street number

It was "2215 Raggio Parkway," but it has just been changed to "2175 Raggio Parkway."

New mailing address for GBSSRL for US Mail, Fed Ex, and UPS:

Nevada Bureau of Mines and Geology
Great Basin Science Sample and Records Library
2175 Raggio Parkway
Reno, NV 89512
Phone (775) 682-8766

Click this link for the map: <http://www.gsnv.org/pdf/New%20office%20location.pdf>

This address change listed above is only for the "Information and Sales" part of the Bureau, now located at GBSSRL. This new facility has the following resources open to the public.

- NBMG geologic maps and reports
- U.S. Geological Survey geologic maps and publications
- U.S. Geological Survey topographic maps
- Aerial photographs
- Oil and gas cuttings, core, and well records

General geological information

The rest of the Bureau (Director, research faculty, analytical laboratory, and cartographic and administrative staff) has the same address and location at the University of Nevada campus:

US Mail:

Nevada Bureau of Mines and Geology
Mail Stop 178
University of Nevada
Reno, NV 89557-0178

UPS or Federal Express:

Nevada Bureau of Mines and Geology
Mail Stop 178
University of Nevada
1664 N. Virginia Street
Reno, NV 89503
Phone (775) 784-6691

<http://www.nbmng.unr.edu/ContactUs.html>

Thanks to CGS for hosting the May meeting

Annual Doug Silver Summer Series 2009

Thursday, August 27, 2009
Doug Silver, Chairman and CEO of International Royalty Corporation
"Evidence that the Market Correction Is Underway"
Talk at 6:00 pm.

5900 Philoree Lane
Reno, NV 89511
849-2347

Click this link for map: [Map to the Cunninghams'](#)

Directions: Proceed up SR 431 (Mt Rose Highway) to the entrance of Galena Creek. Turn left onto Joy Lake and turn left again at the first stop sign (Piney Creek). At the next stop sign (intersection of Piney Creek and Austrian Pine) take a final left. At the end of Austrian Pine the county road ends and a private road (Philoree Lane) begins. Proceed down Philoree Lane to the 2nd green gate (4th house on the left) which also has a wooden sign with the address (5900 Philoree Lane). People can come up the dirt drive to drop off coolers or heavy items but **everyone** will need to park on the asphalt outside of the gate. There is also a Cul de Sac at the end of the road that is easy walking distance to the house.

Unless you need to drop off someone or drop off a heavy item you should not come up the dirt driveway. There is limited turn around space and the Cunninghams' do not want the front packed with cars. Also please drive slow when on Philoree Lane.

Since there are no street lights, it would be wise for people to bring flashlights to negotiate back to cars after the presentation.

[A Warm Thank You to NBMG!](#)

The Geological Society of Nevada expresses its utmost gratitude to the Nevada Bureau of Mines and Geology and State Geologist, Jon Price, for the gift of GSN's new headquarters, symposium office, and storage facilities at the Great Basin Science Sample and Records Library at the Desert Research Institute. The efforts of the NBMG reinforce our common goals and the spirit of collaboration. The new facilities provide GSN much-needed centralization of our published materials, improved access, and sharing of space with the NBMG sales office.

Chapter Sponsors

ELKO CHAPTER AUGUST BBQ SPONSOR



Enviroscientists, Inc.

Reno, Nevada Office: Ph (775) 826-8822 Fax: (775) 826-8857

Elko, Nevada Office: Ph (775) 753 9496 Fax: (775) 753 9499

**Notices, Plans of Operations,
Cost Estimates, TRI, Biological Surveys,
Air Quality Permits & Audits**

Info@enviroincus.com www.enviroincus.com

**Thanks to ALS Chemex
for sponsoring the
Elko July meeting.**

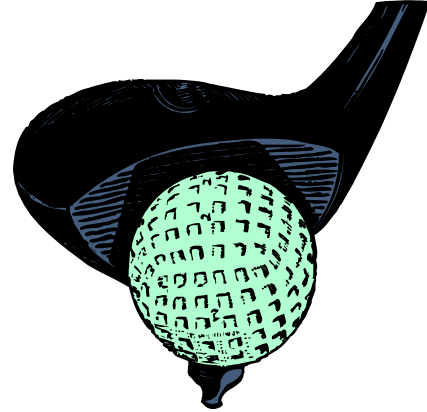
**Thanks to Timberline Drilling, Inc
for sponsoring the
Elko June meeting.**

**Thanks to Major Drilling America
for sponsoring the
Elko May meeting.**

**Thanks to Geotemps, Inc.
for sponsoring the
Southern Nevada May meeting.**

**Thanks to Legarza Exploration
for sponsoring the
Winnemucca May meeting.**

THANK YOU GOLFERS AND INSPECTORATE AMERICA CORPORATION



We had another successful GSN Golf Tournament, this year at Lakeridge Golf Course. The selling of mulligans and raffle tickets brought in \$1,440 for the Geological Society of Nevada Foundation. Inspectorate put on a terrific event with the support of Klen International, Just Equipment, Just Refiners, J.A. Nugget, Lakeridge Golf Course, Agnico-Eagle, Yamana Gold, Vic Edwards, and Steve Schrader. Thank you Carmen Arbizo and Dave Williams for your support of the GSN Golf Tournament and keeping the tradition alive. The event is an important fund raiser for the Foundation.

Congratulations to the winners!

1st Place: Team 12

Raul Madrid
Alex Madrid
Tom Lee
Matt Zier

2nd Place: Team 16

John Lukens
Cheryl Harbor
Bob Felder
Ruth Carraher

3rd Place: Team 7

Dieter Krewedl
Beth Krewedl
Fred Saunders

Long Drive Women:

Lesly Hasler

Long Drive Men:

Daniel Beddow

Women - Closest to the pin #2 3' 1"

Cheryl Harbor

Men – Closest to the pin #12 11' 0"

Don MacKerrow

FACES OF GSN

Linda Newman, Reno, Nevada
Geoscience & Map Librarian, Emerita
Mackay '86

A New Direction

Many of you may remember me over the past 28 years as the Mines Librarian in the Mines Library, basement of Getchell Library at the University of Nevada, Reno, and later as the Geosciences & Map Librarian in the DeLaMare Library in the renovated Mackay Mines Building. You or your company may have heard from me because, for many of those years, I solicited funds for the Mines Library Endowment, which have been used on behalf of many Mackay departments to acquire materials, print or electronic, for the library. I am proud to report that I personally raised over \$130,000 for this fund.



I also served as the map librarian in charge of the largest map collection in Nevada, over 140,000 by last count. I was also responsible for acquiring maps and creating the *Nevada in Maps* website: <http://www.delamare.unr.edu/Maps/digitalcollections/nvmaps/Default.htm>, which contains scans of about 4,000 maps, including many significant geologic and mining maps on Nevada and the Sierra Nevada. Several announcements have been posted in the GSN Newsletter regarding these maps. This May, the Reno Historic Preservation Commission presented me with a plaque in City Hall for the site.

As a long-time member of GSN, I participated in the Symposium 2000 on the Publications Committee responsible for the printing of the multi-volume set. With the budget crisis in Nevada and the University system, I retired from UNR at the end of June 2009. I am very proud of the plaque 'for service to Mackay' which I received.

And now, **A New Direction**: with much encouragement from colleagues and contacts in the mining community, I am beginning a new phase, that of formally providing research service in the same fields I helped for the University and public: library research in geology, mining history, and geography. Often it was apparent to me that the public who came in really did not have time to research a particular area to its fullest extent in these fields, to locate all the relevant published materials. I assisted but it seemed that this was not always the most efficient use of their time. I also taught classes to do this research and, of course, am familiar with the resources. I now want to provide that same assistance to the public.

Thank you to our generous donors

GSN FOUNDATION

GOLD LEVEL DONORS \$500+

SILVER LEVEL DONORS \$100-\$499

BRONZE LEVEL DONORS \$1-\$99

STUDENT DINNER FUND

Steve Rowland

STUDENT FIELD TRIP FUND



GSN and student members wish to extend our appreciation and gratitude to Geotemps and Lance Taylor for their continued support in sponsoring student memberships. This year (2009) Lance has sponsored 103 students. Without his support the majority of these students would not be able to afford to become members of GSN.

Thank you Lance!

ACTIVITY UPDATE

Mike Brady, June 2009

Nevada

www.activityupdate.com

Newmont Mining Corp.(51%) announced that recent drill results at the Sandman Project include 30.78-36.06 meters @ 0.749 opt Au, 1.02 opt Ag (NSM-53); 9.3-14.33 meters @ 0.042 opt Au, 0.69 opt Ag (NSM-68); 0-10.67 meters @ 0.032 opt Au, 0.42 opt Ag (NSM-76) and 20.73-24.57 meters @ 0.048 opt Au, 1.82 opt Ag (NSM-102). (resource = 1,710,000 tons @ 0.048 opt Au measured) *M.J.*: June 5

TNR Gold Corp. announced that it spun-off its lithium and rare metals assets into a new company called International Lithium Corp. *N.M.*: May 25

U.S. Gold Corp. announced that based on recent drill results at the Gold Bar Project, total resources aggregate 25,800,000 tons @ 0.031 opt Au measured+indicated and 8,900,000 tons @ 0.021 opt Au inferred. (was 6,692,000 tons @ 0.042 opt Au indicated and 1,108,000 tons @ 0.034 opt Au inferred) *N.M.*: June 1

Atna Resources Ltd.(30%) announced that recent underground drill results at the Pinson/Ogee Project include 223-237 feet @ 0.185 opt Au (OG6-155-4); 243-273 feet @ 0.848 opt Au (OG6-155-5); 236-241 feet @ 0.758 opt Au (OG6-155-7) and 256-296 feet @ 0.295 opt Au (OG6-155-8). (resource @ Pinson = 2,505,000 tons @ 0.421 opt Au measured+indicated) *Press Release*: June 4

Silvercorp Metals Inc. announced that it offered to acquire Klondex Mines Ltd. through a 0.5 share Silvercorp/1.0 share Klondex exchange basis. (resource @ Fire Creek = 1,760,000 tons @ 0.582 opt Au indicated) *Press Release*: June 15

Yukon-Nevada Gold Corp. announced that a delay in the fabrication of certain fiberglass ductwork resulted in the delay of the complete installation of new mercury emission control equipment at the Jerritt Canyon Roaster. The restart of operations is now expected by the end of June. *Press Release*: June 1

Rye Patch Gold Corp. announced that based on recent drill results at the Jessup Project, resources aggregate 8,571,000 tons @ 0.015 opt Au, 0.25 opt Ag measured; 13,936,000 tons @ 0.012 opt Au, 0.21 opt Ag indicated and 4,954,000 tons @ 0.016 opt Au, 0.23 opt Ag inferred. (was 5,423,000 tons @ 0.022 opt Au, 0.31 opt Ag indicated and 1,265,000 tons @ 0.017 opt Au, 0.23 opt Ag inferred) *Press Release*: June 2

International Enexco Ltd. announced that it acquired an option to earn a 70% interest in the Hot Pot Property from Nevada Exploration Inc. for a requirement to complete 9,000 meters of drilling. *Press Release*: June 8

International Enexco Inc. announced that it acquired an option to earn a 51% interest in the Loomis Mountain Property from Frontier Development Group Inc. for \$3,000,000 in exploration expenditures over 3 years. *Press Release*: June 2

Aurelio Resource Corp. announced that it acquired an option to earn a 100% interest in 10 separate properties from C3 Resources Inc. for 47,500,000 shares. *Press Release*: May 27

Montezuma Mines Inc. announced that it acquired an option to earn a 55% interest in the North Sleeper Property from C3 Resources Inc. for \$15,000 cash and \$3,000,000 in exploration expenditures over 6 years. *Press Release*: June 19

Caughlin Ranch 5th Grade Students GSN Sponsored Field Trip

These photos are from Crystal Peak Judy Sutherland's students are searching out quartz crystals, feldspar, and sericite. Judy and her students are thankful to the GSN Foundation for funding and making this field trip possible.



Crystal Peak

By Brooke E.

We had just taken the longest, bumpiest, most uncomfortable bus ride in the history of 5th grade field trip bus rides. We had eaten lunch on the hardest wood bench, with the largest swarm of pesky wasps in the history of large swarms of wasps bugging 5th grade students eating lunch. We had just hiked up the tallest, dustiest hill in the history of tall dusty hills.

Soon we were at the top of the hill. The whole hill sparkled from the gems embedded in the dust. We dug, and dug, and dug, and dug, and dug, and dug. The other kids were shouting, "Eureka!" but I hadn't found anything yet.

"Wow!" I exclaimed.

"What, whatwhatwhat," Kelly pestered me until I showed her my perfectly formed clean and shiny clear quartz crystal. "Don't drop it," she said.

Oooops. I dropped it, I mused. Kelly told me not to move, so the dust wouldn't cover it. She picked it up. I told her it was mine.

"I found it," she shot back, so I told her to keep it.

Soon after, I found pieces of sericite and feldspar. "I'm going over there, you should come," I advised, pointing to the mountain. She decided to stay, so I left her.

"Hey look, muscovite," I noted, letting Miss Dutchover see it, then dropping it into my bag.

Soon, it was time to go, so we hiked back down the dusty hill, back onto the uncomfortable bus, and back onto the bumpy road. "Here is your crystal," Kelly said, handing it to me.

"Thanks," I replied.

So I got my crystal back, a perfect ending to a great day. (Apart from the ride home!)



GSN Membership – Invite a Colleague to Join!

Since you received this Newsletter -- thanks for being a member of GSN!

You know the advantages and benefits of GSN membership:

- Receiving the newsletter is a great way to keep up with what is going on with geology and exploration in Nevada.
- Stories about geologists working in Nevada.
- Highlights of exploration activity.
- Abstracts of the geology talks presented at the dinners and meetings.
- Notices of upcoming meetings and field trips of GSN and other geological meetings and symposiums. Including the GSN Symposium in 2010
- Contacts with other geologists.
- The annual membership directory is a great reference for exploration and mining companies, addresses and email information on members and if needed a great source of information for companies that employ geologists.
- Annual membership is a bargain at only \$50; even less for students (Dues for Nevada students are sponsored by Geotemps, Inc.)

Make sure to renew your membership this fall to insure that you are in the directory and your information is up to date. The deadline for renewing your membership is December 31, 2009.

Finally, to my point, do you have a colleague that is not a member of GSN? If so, encourage them to join and start receiving the membership benefits. The monthly meetings (except for the summer hiatus) are great. The normal attendance for the membership is about 100 geologists and others; this is a brilliant way to keep up the personal contacts and with a grand group of geologists: Good food, great libations, interesting and informative presentations (yes we can all learn something new) and a great way to support GSN. Also, if you know some geology students at UNR or other colleges and universities, please offer them an invitation to join. When they attend the meetings they have the opportunity to talk with geologists and get an idea of what may be in store for them when they enter the real world of dirt, rocks, drillers and the five star restaurants and hotels in rural Nevada. Just kidding – there are some hidden treasures in the Great Basin.

On behalf of GSN thanks for being a member and please invite a non-member to join! It is easy to join. You can join via the Internet at <http://www.gsnv.org/membership.html>.

We will see you either at the Annual Doug Silver Summer Series 2009 on August 27th or September 18th at the Elks Lodge.

Dave Emmons
Membership Chair

Did You Know ...

you can nominate one of our colleagues for recognition as an HONORARY MEMBER?

Under the GSN Constitution Honorary Membership is granted to members *“who have made outstanding contributions to the advancement and/or promotion of the geological sciences in Nevada, or who have made significant contributions to the GSN, and who are deserving of recognition for their advancements and/or promotion.”* Nominees should have had **a long career in the geological sciences or a related field, a long term association and membership in the GSN and a long-term history of accomplishment in the geological sciences or support of the Society.**

Any member can submit a nomination to the Executive Committee. The nomination must include the following information:

- a. Name of Nominee***
- b. Membership Status***
- c. Statement of reasons for qualification as an Honorary Member***
- d. Brief Biography including a history of GSN involvement and contributions***
- e. Statement that the nominee agrees to be so honored***

Upon approval by the Executive Committee and the Board of Directors and election by the membership nominees are awarded the status of “HONORARY MEMBERS”.

With Thanks

GSN is very fortunate to have so many members who have volunteered to help during our move to the new building and also helping moving our Symposium volumes from storage to our new building.

Thank you to the following people for helping with the move on Saturday, June 20th

Jon Brown
Boies Hall
Marcus Johnston
Fleet Koutz
Cami Prens

Maggie Ressel
Mike Ressel (also paid for the U-Haul)
Vic Ridgley
Laura Ruud
David Van Brocklin

Thank you to the following 2009 Spring Field Trip sponsors, which helped to make the field trip a success!

Dinners

Friday, May 8 – Ormachea's



Saturday, May 9 – Winnemucca Inn



Cocktails

Friday, May 8



Saturday, May 9



Lunches

Saturday, May 9

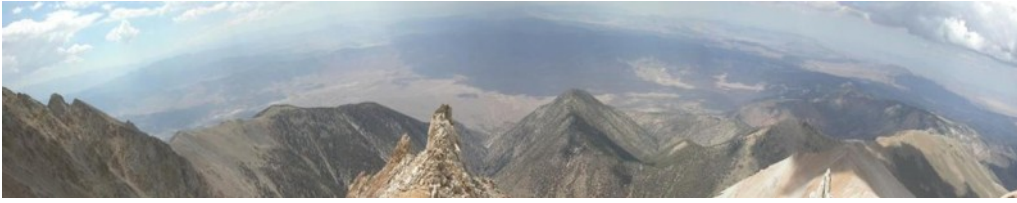


Sunday, May 10



Graphics





Geological Society of Nevada 2010 Symposium

May 14 - 22

John Ascuaga's Nugget - Reno-Sparks, NV

The Geological Society of Nevada invites you to attend our sixth symposium, Great Basin Evolution and Metallogeny. We strive to maintain a tradition of excellence, emphasizing descriptive accounts of ore deposits, new theories on deposit formation and innovative concepts of how to find the next district or deposit.

3 days of Technical Sessions

9 Field Trips

6 Short Courses

SEG GOLD WORKSHOP

Poster Presentations/Core Shack

Publication Volumes

Exhibit Hall

Contact Us:

2175 Raggio Parkway, Room 205

Reno, NV 89512

(775) 846-9766

secretary@gsnv.org

www.gsnv.org/symposium

For Further Information:

exhibits@gsnv.org

technicalsessions@gsnv.org

fieldtrips@gsnv.org

shortcourses@gsnv.org

postersessions@gsnv.org

fundraising@gsnv.org

Co-Hosts:



GSN Board of Directors News

GSN Board of Directors Spring Quarterly Meeting

The spring quarterly meeting of the GSN Board of Directors was held on May 15, 2009 in Reno, Nevada. The Board consists of eleven previous GSN officers and meets each quarter to 1) provide the overall direction of GSN, 2) manage its investment portfolio, 3) provide institutional memory, and 4) promote communication between the GSN "mother-ship" and its three Chapters in Winnemucca, Elko and Las Vegas.

The Board meeting began with GSN Foundation President Roger Steininger reporting that the Foundation had another very successful year with current assets totaling \$252K. The Foundation received over \$40K during fiscal year 2008-2009, primarily from numerous donations by GSN members, and had expenses of approximately \$18K. The Foundation Board will remain the same for 2009-2010 except for the addition of Dan Rovig. An update of the Foundation's activities can be found on GSN's website.

Highlights of the reports from the five Board Committees include the following:

Steve Green reported the Fiscal Committee decided that the management of GSN's investment portfolio be moved from UBS to Wachovia. The intent is to protect the portfolio's principal while maximizing its annual earnings, 50% of which are earmarked for GSN's annual operating budget.

Dave Shaddrick of the Policy Committee discussed the new, standardized guidelines for nominating individuals to become Honorary Members. Any GSN member can nominate an individual for the GSN Executive Committee and the Board to approve.

Greg Hill of the Nominating Committee reported the general membership voted to approve the nominees for the 2009-2010 Executive Committee and the Class A Board of Directors members for 2009 -2012. The newly elected Class A Board members are Lynne Volpi from Elko and Kim Craig from Winnemucca.

Fred Breit of the Audit Committee reported the successful completion of an internal audit on the financial records of the GSN and its Chapters.

Nancy Wolverson of the Symposium Committee summarized the status of the preparation for the May 14 -22, 2010 Symposium, She reported the hiring of a part time secretary and the Symposium moving into its new office provided by the Nevada Bureau of Mines at DRI.

Marcus Johnston reviewed the recent GSN activities including the highly successful spring field trip and presented the proposed 2009-2010 GSN budget, which the Board approved. Josh Bonde of the Southern Nevada Chapter reported that membership, composed primarily of UNLV graduate students, and attendance at their meetings are both increasing. John Marma of the Winnemucca Chapter was planning a short course on epithermal deposits headed by Stuart Simmons. The very successful short course was held in Winnemucca in June and attended by over 70 people.

The Board approved Dieter Krewedl to be Chairman for the 2009-2010 and thanked the outgoing Board members Steve Green, Fred Breit and Greg Hill for their contribution and dedication to the GSN.

GSN members are encouraged to go to the GSN web site at www.gsnv.org to learn more about the activities of the GSN and, in particular, the Board of Directors, the Executive Committee, the Foundation, and its Chapters.

The next Board meeting is scheduled for Thursday afternoon, August 20 in Elko just prior to the Chapter's monthly meeting. The Board appreciates input from the GSN members on any issues they want to be discussed or are currently under consideration.

PRO1
Automotive
 "Discover the Personalized Touch in Automotive Repair"

QUICK LUBE LANE **AAA Approved Auto Repair** **SMOG CHECK GAS & DIESEL**

COMPLETE AUTO REPAIR
FOREIGN & DOMESTIC
 AUTOS • TRUCKS • 4-WHEEL DRIVES • GAS & DIESEL

945 TERMINAL WAY, RENO 89502
 OFF MILL STREET
775-856-4434
 www.pro1automotive.com

WE PROUDLY SUPPORT NEVADA MINING!
 Ricky Stebbins has been taking care of geologists vehicles since 1986 & understands the need for reliable vehicles on the road and in the field.

Big Sky Geophysics

Clark Jorgensen, M.Sc.
 Geophysicist

*Field Work
 Processing
 Interpretations*

P.O. Box 353 Phone/Fax +1 (406) 587-6330
 Bozeman, Montana 59771 Mobile +1 (406) 580-9718
 USA clark@bigskygeo.com

For more details, my background, and case studies, visit my webpage at www.bigskygeo.com

Magee Geophysical Services LLC

465 Leventina Canyon Road
 Reno, Nevada 89523 USA
 P (775) 742-8037
 F (775) 345-1715
 chris_magee@gravityandmag.com
 www.gravityandmag.com

Christopher Magee
 Consulting Geophysicist

ALS Laboratory Group
 ANALYTICAL CHEMISTRY & TESTING SERVICES

ALS Minerals



The world's leading supplier of analytical and assay services for the exploration and mining industries.

U.S.A. Locations
 Reno, NV (775 356 5395)
 Elko, NV (775 738 2054)
 Winnemucca, NV (775 625 4192)
 Fairbanks, AK (907 452 2188)

We provide analysis for:

- Gold & Other Precious Metals
- Base Metals & Pathfinder Element Suites
- Uranium Exploration
- Concentrates & Industrial Minerals
- Acid Generation Potential
- Isotopes

Rapid Core Stop:

- Core Log & Cutting

Minerology Services

Contact us to find out how we can save you time and allow you to use your data with greater confidence.

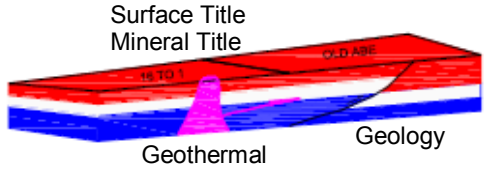
www.alschemex.com

*Right solutions....
Right partner*

G.I.S. Land Services

Greg Ekins M.S. R.P.L. #32306 President
 Mineral Landman - Commissioned Abstractor
 "From Courthouse Records to Final Map"

Due Diligence, Acquisition, Wind Energy
 Solar Energy, Geothermal Title, National
 Instrument (NI)43-101 Title Review



A professional firm of Landmen, Geologists, Draftsmen and Technicians
 Providing Abstracts of Title, Land Status and
 Exploration Geology Services
 Utilizing AutoCad - ArcMap - MapInfo - PowerPoint
www.gislandservices.com

241 Ridge Street, Suite 250 **New Address**
 Reno, NV 89501
 Ph: 775-746-8803 Fax: 775-746-8802
 Email: greg@gislandservices.com

North American Exploration

Providing service to the Mining industry since 1964



With over 45 years of experience,
we will complete any exploration project,
Anytime! Anywhere!



801-544-3421
North American Exploration, Inc.
447 North 300 West, Suite #3
Kaysville, Utah 84037
Email: nae@nae-xploration.com



At Timberline Drilling, Inc. we have a fleet of drills to meet every need. We specialize in both underground and surface core drilling in support of active mining operations, mine development projects and exploration.

Timberline Drilling, Inc. - Corporate
Martin Lanphere: 208.755.1938
mlanphere@timberline-drilling.com

Timberline Drilling, Inc. - Mexico Operations
Paul Elloway: 52.662.151.0426
pelloway@wwemexico.net

Timberline Resources Corp.
Randy Hardy: 208.664.4859
hardy@timberline-resources.com

Visit Us At:
www.timberline-drilling.com
for detailed information on all of our available drill rigs.

Conn Davis

775-831-7539



CLD SURVEYING

Surveyor & Expert Witness

Mining Claims Property Boundaries
Water Rights Drill Holes, Etc.

Mailing Address:
P. O. Box 7316
Incline Village, NV 89452

Licensed in:
California
Nevada
Idaho

Exploration & Mining Analytical Services



INSPECTORATE

INSPECTORATE AMERICA CORP.

605 BOXINGTON WAY, SUITE 101
SPARKS, NV 89434-8929

Phone: 775.359.6311 * Fax: 775.359.2944
<http://www.inspectorate.com>

Carmen Arbizo-Business Development Mgr
Carmen.Arbizo@Inspectorate.com
Mobile: 775.219.8657

Robert Wasiliew-General Mgr
Robert.Wasiliew@Inspectorate.com
Mobile: 775.741.0015

Dave Williams-Vice President
Dave.Williams@Inspectorate.com
Mobile: 775.848.8025

Chuck Whipple-Quality Assurance/Client Service Mgr
Chuck.Whipple@Inspectorate.com
Mobile: 775.830.4242

MINIMIZING RISK EVERY DAY
ISO 9001:2000 Certificate #30406



Leaders in Deep Exploration

Global Geophysical Services

Surveys: IP/Resistivity,
EM, Gravity, MT, TEM, CSAMT,
Magnetics

Consulting: 2D & 3D Inversion,
Project Design, Modelling

Deep Earth Imaging Technology



Minesite Imaging: Exploration,
Delineation, Condemnation

www.QuantecGeoscience.com 1.775.827.2611

Canada • USA • Botswana • Peru • Chile • Argentina • Australia



**ENVIRONMENTAL SERVICES
FOR THE MINING INDUSTRY**

environmental consultants, inc.

- Baseline Studies
- Environmental Permitting
- Monitoring & Compliance
- Reclamation & Closure Plans
- Investigation & Remediation

**Elko Location
775-738-8766**

www.jbrenv.com Reno and Salt Lake City locations

Jo Beth Allen
Professional Graphics

*CAD Drafting/Geologic Data Maps
Digitizing/Presentation Graphics
PowerPoint/Plotting/Printing
Geologist*

1055 Joshua Drive Phone: 775-324-7960
Reno, Nevada 89509 Fax: 775-324-7583
jobeth@yellowsb.net



A subsidiary of:



www.orbitgarant.com

RC Drilling, Core Drilling Surface & Underground
Contractors License # 59509

6120 Pedroli Lane Tel 403-652-5530
Winnemucca N.V. 89445 Fax 403-652-5578
Email infodriftdrilling@platinum.ca



Fire Assay, ICP-OES/MS,
XRF, LECO, Custom Prep,

Chris Ioannakis, Managing Director, Analytical Services

Corporate Office **Elko Office**
1500 Glendale Avenue 2320 Last Chance Road
Sparks, NV USA 89431-5902 Elko, NV USA 89801-4852
Telephone: (775) 356-0606 Telephone/Fax : (775) 738-9100
Fax: (775) 356-1413

E-mail: AALADMIN@aallabs.com
Website: www.aallabs.com



**Carlin Trend Mining
Supplies & Service**

www.carlintrend.com

369 5th St., Elko, NV 89801
(775) 778-0668, Fax: (775) 778-0687, carlintrend@frontiernet.net

Geological Consulting - Claim Staking - Soil Sampling
Geology & Drafting Supplies - AutoCad & GIS
Temporary Employees In All Fields



HARD ROCK WHEELS, INC.
4WD Pickup Rentals

Howard J. Adams Taiga Ventures
14756 Pine Knolls Lane 2700 S. Cushman St.
Reno, Nevada 89521 Fairbanks, Alaska 99701
(775) 852-2622 Fax (775) 852-2075 (907) 452-6631
hardrockwheels@yahoo.com



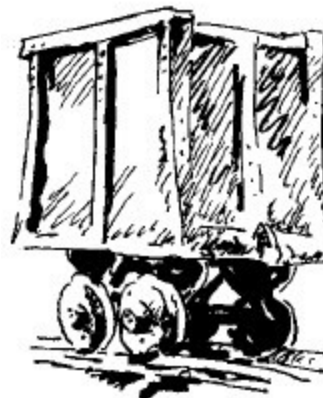
John Doucette Tramp Geologist

International experience in exploration and mining

- Geology and ore deposit mapping
- Core and cutting logging
- Computer assisted mapping
- Petrography - Geochemistry - GIS - GPS
- Database construction and analysis
- Core photography - rock density measurements
- Project management

Have Hammer Will Travel

doucettj@gmail.com



T&T EXPLORATION LLC

CLAIM STAKING SAMPLING MAPPING GPS

KIP TONKING

GEOLOGIST



P.O. Box 6945
Incline Village, NV 89452

Phone: (775) 831-3471
Cell: (775) 750-3663
Fax: (775) 831-3471
Res: (775) 831-3470
ktonking@msn.com

RENT A PIMA!!

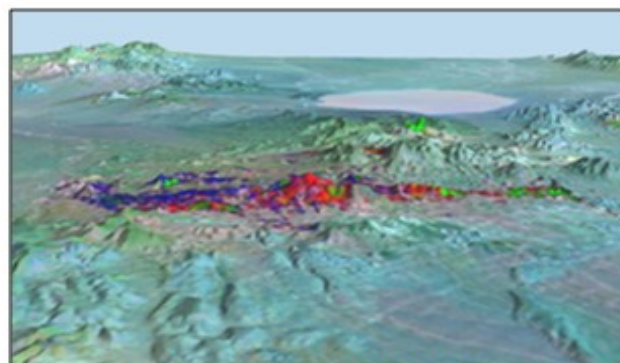


**IDENTIFY and MAP ALTERATION
MINERALS IN THE FIELD and CORE**

CONTACT US FOR Rentals and Services

Spectral International, Inc
303 403 8383 pusa@rmi.net
www.specmin.com

EXPLORATION with ASTER



Alteration Image, Goldfield, Nevada

- CUSTOM CORRECTED DATA
- ALTERATION IMAGERY
- EXTENSIVE GLOBAL ARCHIVES

WWW.ASTERIMAGES.COM
email: pusa@rmi.net
dwc@overhill-imaging.com

GEOLOGICAL SOCIETY OF NEVADA



gsn@gsnv.org • www.gsnv.org
 Telephone (775) 323-3500 Fax (775) 323-3500
 2175 Raggio Parkway, Room 107
 Reno, NV 89512
 USA

NON PROFIT
 ORGANIZATION
 U.S. POSTAGE
 PAID
 RENO, NV
 PERMIT NO. 931

PAID ADVERTISEMENTS

Barranca Diamond Core Saws and Blades

BD-2000 Series Wet Cutting Core Saws

These precision built saws are designed for rapid and accurate sawing of exploratory core specimens. The integral core holder provides for rapid and safe cutting of cylindrical core samples. Adjustable height cutting head accommodates specimen sizes between 1" and 5" in diameter. Available with gas (part# 026301) or electric (part# 02630) motor.



BD-62Q

For wet cutting of quartz, volcanic rock and marble



BD-62P

For wet cutting of porphyry granite and other hard materials



BD-2003E

BD Made in the USA

14" Segmented Rim Blades

| Blade | Diameter | Width | Arbor | Part# |
|---------------|-------------|-------|-------|--------|
| BD-62P | 14" (356mm) | .095 | 1" | 02556A |
| BD-62Q | 14" (356mm) | .125 | 1" | 02556 |



988 Packer Way, Sparks, NV 89431
 Phone: (775) 786-3003 | Fax: (775) 786-3813 | www.Lmine.com