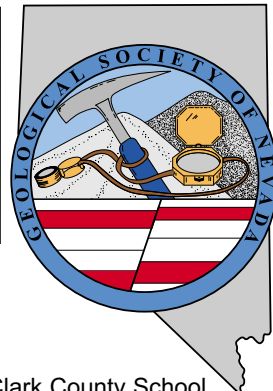


# GSN NEWSLETTER



December 2006, Vol. 21, No. 10

Published monthly except June and July

## PRESIDENT

**Ellie Davie Leavitt**  
Western Energy Development Corp.  
zoracdavie@aol.com

## VICE PRESIDENT

**Gregory Hill**  
Harvest Gold Corp. (US)  
hillgreg@charter.net

## SECRETARY

**Leslie Olmstead**  
Agnico-Eagle (USA) Limited  
lolmstead@agnico-eagle.com

## TREASURER

**Camille Prens**  
Mine Development Associates  
cami@mda.com

## MEMBERSHIP CO-CHAIRS

**Greg McN. French**  
Consulting Geologist  
GMcNFrench@aol.com

## Opal Adams

Enviroscientists, Inc.  
ofadams@enviroincus.com

## PUBLICATION CO-CHAIRS

**Marilyn Miller**  
Consulting Geologist  
marilyn.miller1@sbcglobal.net

## Debbie Schneider

Schneider and Schneider Assoc  
dschneider41@charter.net

## OFFICE MANAGER

**Laura Ruud**  
gsn@mines.unr.edu

## CALENDAR OF GSN EVENTS

- Dec. 7  
Thursday  
(Note  
Change)** SO NEVADA CHAPTER MEETING: Speaker: Steve Scott, Clark County School District. Topic - Steve will talk about current activities of the "Museum Without Walls" program, which features a mobile display of rocks, minerals, and fossils that visits district schools in support of earth science courses. UNLV Lily Fong Geoscience Building, Room 105, Steve's talk will be preceded by dinner refreshments at 6:00 pm, and will be followed by a silent auction of minerals, fossils and other geological-related materials. Contact Bruce Hurley, Chapter President at 702/295-1284, rocks2bwh@aol.com.
- Dec. 13  
Wednesday  
(Note  
Change)** GSN CHRISTMAS MEETING & ROCK RAFFLE/SILENT AUCTION. Speaker: Dr. Rich Schweickert, UNR Dept of Geological Sciences. Title: "Neotectonics of the Tahoe Basin: Implications for Landslides and Tsunamis". Reno Elks Lodge, 597 Kumble Ln, Reno, NV. Drinks-6 pm, dinner-7 pm **(\$20)**, talk-8 pm. Silent Auction and Raffle will be going on from 6 - 9 pm. Contact Laura Ruud for reservations, 775/323-3500, gsn@mines.unr.edu. No abstract.
- Dec. 14  
Thursday  
(Note  
Change)** WINNEMUCCA CHAPTER MEETING. Speaker: Steven D. Craig, Gryphon Gold Corporation. Title of talk: "The History, Development Plans and Exploration Potential of the Borealis Gold Project, Mineral County, Nevada". The Martin Hotel, W Railroad and Melarkey Streets. Meeting will begin at 6 pm instead of the usual 6:30 in order to enjoy finger-food and drinks provided by the Martin Hotel and sponsored by ALS Chemex. Talk will begin at 7pm as usual. Contact Ivan Johnston, Chapter President, for more info, 775/635-4292, Ivan.Johnston@Newmont.com. See abstract on page 9.
- Dec. 15  
Friday  
(Note  
Change)** ELKO CHAPTER MEETING: Kevin Downey. Topic - Caves. Western Folklife Center, 501 Railroad St, Elko, NV. Drinks at 6:00 pm with the talk at 7:00 pm. Contact Richard Reid, Chapter President, at 775/778-3912, Richard.Reid@newmont.com for more information.



Geological Society of Nevada, PO Box 13375, Reno, NV 89507 USA, 775/323-3500, [www.gsnv.org](http://www.gsnv.org)  
Office location: Laxalt Mineral Research Center, Rm 266, UNR. Hours: Mon thru Fri, 1-4 pm

## FROM THE GSN FOUNDATION CHAIRMAN

Ann Carpenter

The GSN Foundation is pleased to provide this important update ... we are 2 years into a five year fundraising effort focused on raising funds for the Foundation's endowment account to a minimum of \$250,000. Our efforts have been very successful, thanks to so many GSN members, companies, and partners. Over the past two years, the Foundation restricted accounts including the endowment totals over \$130,000 - we are 'better than half-way' to our goal. Total funds in all of the accounts is closer to \$149,000. Thanks to IGT, AIPG, the Echo Bay Library, X-Cal, the Golf Tournament Mulligans, and the Symposium for their respective large donations, and to all of the GSN members and companies who continue to help us with individual

donations. It is all adding up, helping us to achieve our minimum goal of \$250,000.

*continued on page 2*

## DECEMBER MEETING SPONSOR



GRASSROOTS  
TO  
DEVELOPMENT

"REALLY GOOD SUBMITTALS INVITED"

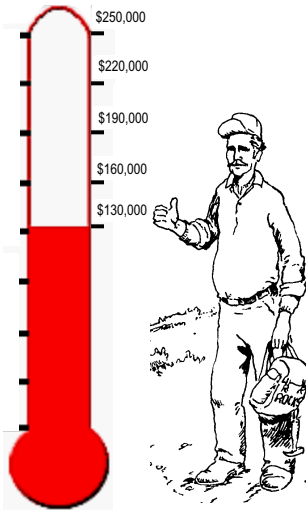
(775) 828-6070  
5470 LOUIE LANE, SUITE 102 RENO, NEVADA 89511 FAX (775) 828-6089  
MABRAMS@AGNICO-EAGLEUSA.COM



# News and Announcements

## FROM THE FOUNDATION CHAIRMAN

continued from page 1



Sketch from the Larry Jacox (retired) folder at the Nevada Bureau of Mines and Geology.

The objective is to get to a minimum of \$250,000 in our endowment account, to support the Foundation's current programs. Two of these programs – the K-12 Field Trip Grants and the Nevada University System scholarships – have been very successful in reaching out to many in Nevada's statewide communities. The Field Trip Grants, headed by D.D. LaPointe's and Rachel Dolbier's fine efforts, has reached in excess of 70,000 students statewide, and this year is shaping up to be one of the largest ones to date.

As well, our scholarships program funds UNR, UNLV, and now most recently thanks to Elko's fundraising efforts, Great Basin College scholarships. The Foundation has two other programs that we attempt to fund as well – mapping grants in partnership with NBMG and support for the Keck Museum. Thanks to your donations the Foundation is successfully funding earth science education related programs statewide.

As the year ramps to a close, please remember the Silent Auction/Christmas Raffle coming up on December 13, 2006 – this is a yearly success, thanks so much to D.D. LaPointe and Rachel Dolbier and their hard work and dedication. Please get in touch with D.D. (dlapoint@unr.edu) if you have some raffle items to donate. As well, with the end of the year rapidly approaching, please consider making a charitable donation to the Endowment account to help us get to our goal (it's tax deductible). The GSN Foundation (PO Box 13375, Reno, NV 89507) thanks each and every one who has helped us to hit our 'better than half-way' mark.



Symposium 2005 Committee Members (Terri Garside, Dieter Krewedl and Eric Ruud) present a \$50,000 check to Ann Carpenter, Foundation Chair.

## FROM THE PRESIDENT

Ellie Davie Leavitt, GSN President 2006-2007

Seasons Greetings! In the spirit of the season, this issue leads with news from the Foundation, GSN's philanthropic arm. As described, the Foundation has successfully achieved more than half its financial goal of sustainability. Thanks to your support, the Foundation will continue to contribute to the K-12 program, and scholarships for college students; the proposed K-12 program for this year alone will help fund earth science related field trips for more than 3,500 students in schools throughout the state. That's a lot of outreach! The GSN Christmas party provides a year-end opportunity to support the Foundation through participation in the raffle and silent auction – **a fun way to donate**. Kudos to Ann Carpenter and the Foundation, D.D. LaPointe and Rachel Dolbier, GSN Education Co-chairs, for the ongoing fundraising and outreach educational efforts on behalf of GSN.



Recent GSN events include the October fall field trip; it was full, fun, and successful, many thanks to Greg Hill and trip leaders (see article, page 9). The weather was perfect, the crowd mellow (enjoying a weekend off), and satisfied with a mix of pit and geology stops, and travel conversations that ranged from provocative (role of hydrocarbons in Carlin deposits) to stimulating (effect of daylight savings on total sleep). By Sunday, even the gravels in the Archimedes expansion pit were intriguing; maybe this was the effect of daylight savings.

Molybdenum was the commodity of the month at the November membership meeting, with Greg Ferdock providing a timely update on Mt. Hope. Looks like things are full steam ahead with Idaho General focused on moly; zinc may happen later, eventually even copper. Who knows? The bar was sponsored by **Boart Longyear/Lang Exploratory Drilling**. A sizable group of students joined us again. It's great to have some youth among us; the student dinner fund is working. Thanks to all for an informative and fun meeting.

Please join us at the GSN Christmas party and fundraiser on Wednesday, December 13<sup>th</sup>. The evening's presentation by Rich Schweickert of UNR should be of great interest and shed light on one of the region's true gems – Lake Tahoe. See you there!

**Thanks to Boart Longyear/Lang  
Exploratory Drilling  
for hosting the November meeting.**

# GSN December 13, 2006 Membership Meeting

**Date:** Wednesday, December 13, 2006

**Time:** Social-6:00, Dinner-7:00 (\$20), Meeting-8:00

**Reservations:** 775/323-3500; fax 323-3599,  
e-mail [gsn@mines.unr.edu](mailto:gsn@mines.unr.edu)

**Deadline:** Reserve by 1 pm Tuesday, December 12<sup>th</sup>

**Location:** Elks Lodge, 597 Kumle Lane, Reno, NV

**Directions:** Across (W) from the Reno-Sparks Convention Center (S Virginia St), behind the Les Schwab Tire Center

**Speaker/topic:** Dr. Rich Schweickert, UNR Dept of Geological Sciences. No abstract available at press time.

## DIRECTORY ADS – GOLD PAGES

**Deadline—December 15, 2006**

It is time to get your advertisements in for the 2006/2007 Membership Directory. Don't miss this opportunity to reach your clients. The Directory was distributed to approximately 900 members last year and we are projecting over 1,000 members this year. The Directory will be published in January 2007. Prices are as follows:

2" × 3 1/2"	Business Card – Horizontal	\$ 50
3 1/2" × 5"	Quarter Page – Vertical	150
5" × 7"	Half Page – Horizontal	300
3 1/2" × 10"	Half Page – Vertical	300
7" × 10"	Full Page – Vertical (Gold Pages)	450
7" × 10"	Opposite, Inside Back Cover – Vertical	<b>SOLD</b> 600
7" × 10"	Qualified Persons Page	<b>SOLD</b> 600
7" × 10"	Inside Back Cover – Vertical	<b>SOLD</b> 700
7" × 10"	Inside Front Cover – Vertical	<b>SOLD</b> 800
7" × 10"	Outside Back Cover – Vertical	<b>SOLD</b> 1,000

Please contact Laura Ruud at the GSN Office, 775/323-3500, or Greg French, GSN Membership Chairman, at 775/856-2422 for more information or to obtain a form.



**JOSEPH R. ANZMAN**  
Geological Engineering  
Professional Engineer  
1000 S. Virginia St., Suite 200  
Reno, NV 89502  
Phone: 775/323-3500  
Fax: 775/323-3599  
[www.janzman.com](http://www.janzman.com)

**ATI Photographics**  
2000 S. Virginia St., Suite 200  
Reno, NV 89502  
Phone: 775/323-3500  
Fax: 775/323-3599  
[www.atiphotographics.com](http://www.atiphotographics.com)

**Paragraphs and On-Waterway Services**  
Incorporated in the State of Nevada  
1000 S. Virginia St., Suite 200  
Reno, NV 89502  
Phone: 775/323-3500  
Fax: 775/323-3599  
[www.psws.com](http://www.psws.com)

**Jr. Deth Azim**  
Professional Graphics  
2000 S. Virginia St., Suite 200  
Reno, NV 89502  
Phone: 775/323-3500  
Fax: 775/323-3599  
[www.jrdeth.com](http://www.jrdeth.com)

**IT IS A TOUGH JOB  
BUT SOMEBODY HAS TO  
PERMIT IT**

**Specializing in Exploration & Mining Projects  
on U.S.S., B.L.M., & Private Lands**

Plans of Operations • Notices • Record-Ready (Mining & Cultural)  
Environmental Assessments • Environmental Impact Statements  
Permit Modification & Negotiation

4440 Skunkie Lane, Suite 100N  
Reno, Nevada 89502  
Phone: (775) 856-4855  
Fax: (775) 856-4855  
[www.miracoastals.com](http://www.miracoastals.com)

**Miracoastals, Inc.**  
Contractors • Engineers • Managers  
Specializing in Exploration

**ALS Chemex**  
ANALYTICAL CHEMISTRY & METALS SERVICES  
1000 S. Virginia St., Suite 200  
Reno, NV 89502  
Phone: 775/323-3500  
Fax: 775/323-3599  
[www.alschemex.com](http://www.alschemex.com)

**BLAD**  
1000 S. Virginia St., Suite 200  
Reno, NV 89502  
Phone: 775/323-3500  
Fax: 775/323-3599  
[www.blad.com](http://www.blad.com)

**WESTERN ENVIRONMENTAL INC.**  
1000 S. Virginia St., Suite 200  
Reno, NV 89502  
Phone: 775/323-3500  
Fax: 775/323-3599  
[www.westernenv.com](http://www.westernenv.com)

**DEWORLD ASBESTE**  
1000 S. Virginia St., Suite 200  
Reno, NV 89502  
Phone: 775/323-3500  
Fax: 775/323-3599  
[www.deworld.com](http://www.deworld.com)

**Diverted Mining LLC**  
1000 S. Virginia St., Suite 200  
Reno, NV 89502  
Phone: 775/323-3500  
Fax: 775/323-3599  
[www.divertedmining.com](http://www.divertedmining.com)

## ACTIVITY UPDATE

Mike Brady, October 2006  
www.activityupdate.com

### NEVADA

Columbus Gold Corp. announced that it acquired an option to purchase a 100% interest in the Spring, Winnemucca Mountain, Mill Canyon, Del Oro and White Canyon properties from John Prochnau for \$27,000 cash and 100,000 shares. *Press Release: September 29*

AuEx Ventures Inc. announced that it acquired an option to earn a 100% interest in the Green Monster Property from Mountain Gold Exploration Inc. for \$15,000 now and future undisclosed payments. *Press Release: October 12*

Midway Gold Corp. announced that recent drill results at the Spring Valley/North Hill Project include 208-220 meters @ 0.014 opt Au (SV06-183); 121-141 meters @ 0.012 opt Au (SV06-185); 97-107 meters @ 0.230 opt Au (SV06-200); 174-198 meters @ 0.275 opt Au (SV06-200); 213-231 meters @ 0.025 opt Au (SV06-201) and 164-197 meters @ 0.016 opt Au (SV06-202). (resource = 10,030,000 tons @ 0.024 opt Au measured+indicated) *Press Release: October 13*

Barrick Gold Corp. announced that it would purchase an additional 1,000,000 share units of Midway Gold Corp. to then hold an 8.9% interest in the company. *Press Release: October 5*

Quaterra Resources Inc. announced that it acquired an option to earn a 100% interest in the Gray Hills Property from private interests for \$15,000 now and future yearly payments. *Press Release: October 3*

New Dimensions Resources Ltd. announced that Agnico-Eagle Mines Ltd. terminated its interest in the Trend Property. *Press Release: September 20*

NewWest Gold Corp. announced that recent drill results at the Sandman Project include 210-225 feet @ 0.015 opt Au (AK06-1); 245-665 feet @ 0.087 opt Au (AK06-2); 465-515 feet @ 0.070 opt Au (SEP06-93); 130-165 feet @ 0.030 opt Au (SR06-92); 95-120 feet @ 0.019 opt Au (SR06-93); 135-210 feet @ 0.236 opt Au (SR06-100); 265-425 feet @ 0.042 opt Au (SR06-101); 285-320 feet @ 0.063 opt Au (SR06-102) and 60-95 feet @ 0.050 opt Au (SR06-106). *Press Release: October 16*

Romios Gold Resources Inc. announced that recent drill results at the Scossa Project include 600-605 feet @ 0.180 opt Au (RGR-20); 910-915 feet @ 0.093 opt Au (RGR-21); 30-35 feet @ 0.065 opt Au (RGR-27) and 595-600 feet @ 0.017 opt Au (RGR-28). *Press Release: October 16*

X-Cal Resources Ltd. announced that recent drill results at the Sleeper Project include 145-165 feet @ 0.088 opt Au (RF06-01); 485-490 feet @ 0.230 opt Au (RF06-01) and 185-320 feet @ 0.007 opt Au (RF06-02). (resource = 150,000 tons @ 0.363 opt Au inferred)

*Press Release: October 11*

Rob McEwen, the largest private shareholder of Goldcorp Inc. announced that he was rebuffed in his attempts to put the proposed Goldcorp+Glamis Gold merger to a shareholder vote. *M.J.: October 6*

Centerra Gold Inc. announced that recent drill results at the REN Project include 876.3-880.9 meters @ 0.125 opt Au (RU-105-W1); 874.5-894.4 meters @ 0.032 opt Au (RU-105-W2) and 857.4-860.5 meters @ 0.164 opt Au (RU-105-W3). (resource = 3,028,300 tons @ 0.398 opt Au indicated) *Press Release: October 26*

PacMag Metals Ltd. announced that based on recent drill results at the Ann Mason Project, total resources aggregate 891,000,000 tons @ 0.40% Cu, 0.004% Mo inferred while the high grade core aggregates 243,100,000 tons @ 0.51% Cu, 0.004% Mo inferred. (was 495,000,000 tons @ 0.40% Cu inferred) *M.J.: October 13*

*Thank you to our  
generous donors*

### GSN Foundation

#### SILVER LEVEL DONORS \$100 - \$499

Mark Abrams	Richard Nielsen	John Prochnau
Dieter Krewedl	Allyn Niles	Tommy Thompson

#### BRONZE LEVEL DONORS Up to \$100

Fred Bernard	Karl Marlowe	Eric Struhsacker
Keith Blair	Jay Olcott	Steve Sutherland
Elliott Crist	Kim Roberts	Bob Thomas
Jerry Dolence	Jamie Robinson	Paul Tietz
Jonathan Gant	Winthrop Rowe	Hendrik van Oss
Steve Lappin	Charles D. Snow	William R. Wilson
John Lucas	Jeffrey Spence	Pamela Zohar

### Student Dinner Fund

Mark Abrams	Jonathan Gant	John Prochnau
Opal Adams	Paul Hohbach	Vic Ridgley
Fred Bernard	Sally Kleiner	Charles D. Snow
Rich DeLong	Dieter Krewedl	Eric Struhsacker
William Durbin	Paul Kuhn	Tommy Thompson
Del Flint	Steve Lappin	



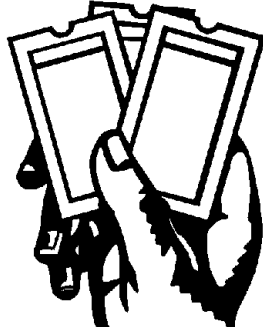
# GSN Holiday Party

## ROCK RAFFLE ITEMS NEEDED!! December 13, 2006

D.D. LaPointe  
*GSN Foundation Trustee and Education Co-Chair*

Rachel Dolbier  
*GSN Education Co-Chair*

It's time to think about donating items for the Geological Society of Nevada Foundation's fundraiser "Rock Raffle and Silent Auction" to be held at our annual Christmas meeting on December 13. We are seeking donation of any items suitable for raffle – gift baskets, attractive rock or mineral samples, gems or gemstones, jewelry, wine or other spirits, logo items, geological equipment or publications, commemorative coins, GOLD, or any geology or mining-related items will be gratefully accepted.



Raffle proceeds support GSN's educational projects, which include grants to Nevada K-12 classes for transportation on earth science related field trips, scholarships to UNR and UNLV geology students, grants to the UNR DeLaMare Library, and grants for geologic mapping in Nevada.

Donors will have their names displayed on signs at the event as well as having their names listed in the January newsletter. The GSN Foundation is a 501(c)(3) public charity, tax ID # 88-0447867. Please send donated items to D.D. LaPointe at the following address to arrive before the December meeting date, or call to arrange pick-up of donated items if you are in the Reno-Sparks-Carson City area.

### ***Thank you for your support!***

D.D. LaPointe  
NV Bureau of Mines and Geology/MS178  
University of Nevada, Reno  
Reno, NV, 89557-0088

Phone: (775)784-6691, ext.134, FAX: (775)784-1709  
e-mail: [dlapoint@unr.edu](mailto:dlapoint@unr.edu)

Rachel Dolbier, Administrator  
W.M. Keck Earth Science and Mineral Engineering Museum  
MS 168/University of Nevada, Reno  
Reno, NV 89557  
(775)784-4528 phone (775) 784-1766 fax  
<http://mines.unr.edu/museum>

## GSN MEMBERS' PERSONAL NOTES & NEWS

### *Career Related Moves*

► Goldcorp Inc. recently completed a friendly merger with Glamis Gold Ltd. Goldcorp welcomed its newly appointed directors, Kevin McArthur, A. Dan Rovig, P. Randy Reifel and Kenneth Williamson. Long-time GSN member Dan Rovig had served as a director and Chairman of the Board of Glamis since November 1998. Before his appointment as Chairman, Mr. Rovig was a director and the President and Chief Executive Officer of Glamis and its subsidiaries from November 1989 to August 1997 when he retired. Prior to 1988, Mr. Rovig was an executive officer of British Petroleum Ltd., including its subsidiaries Amselco Minerals Inc. and BP Minerals America for five years. Congratulations Dan!

► Warren Thompson accepted a position with NewWest Gold USA Inc. as Senior Geologist, with the primary task of managing JV exploration and future development of the new Long Canyon gold discovery, east flank of the Pequop mountains.

**Members are encouraged to keep us informed about their own career related moves and awards, and deaths of GSN colleagues. Your information needs to be received by Laura at [gsn@mines.unr.edu](mailto:gsn@mines.unr.edu) by the 21<sup>st</sup> of each month.**

## GSN Newsletter Monthly Advertising Rates

Business card size (3 1/2 x 2'')	\$ 50.00
Quarter page (3 1/2 x 4 3/4'')	150.00
Half page (4 3/4 x 7 1/2'')	300.00
Classified ads \$10/line (up to business card size)	

**For an advertising form, call the GSN office at 775/323-3500 or fax 323-3599. Digital or text ads must be received by the 20<sup>th</sup> of the month to appear in the following month's newsletter. Submit digital files exported as a PDF, JPEG, TIFF, EPS, or PICT with preview.**



**JOSEPH R. ANZMAN**

*Exploration Geophysicist*

- consulting
- interpretation
- project management
- geophysical surveys
- domestic & foreign

P.O. Box 370526  
Denver, Colorado 80237  
303-337-4559  
telephone/fax



**Stephen D. Lappin**

Consulting  
Landman

- Claim Staking
- Mapping
- Land Status
- Title

Cell: (970) 260-0293

Fax: (970) 241-9523

Email: Lappins@earthlink.net

2830 North Ave., C5B #164

Grand Junction, CO 81501



**DIXIE BULLOCK**  
DISTRICT MANAGER

**WILMA HATTER**  
SERVICE REPRESENTATIVE  
HATTERW@SOSSTAFFING.COM

390 East Moana Ln., Ste. 2  
RENO, NV 89502  
T. 775.331.5227 F. 775.323.7772  
WWW.SOSSTAFFING.COM

*A Division of SOS Staffing Services, Inc.*

Fire Assay  
ICP - OES  
ICP - MS  
AAS  
Custom Preparation  
Bullion Analyses  
BLEG

**Corporate Office**  
1500 Glendale Avenue  
Sparks, NV U.S.A. 89431-5902  
Telephone (775) 356-0606  
Fax (775) 356-1413

Chris Ioannakis, Managing Director,  
Analytical Services



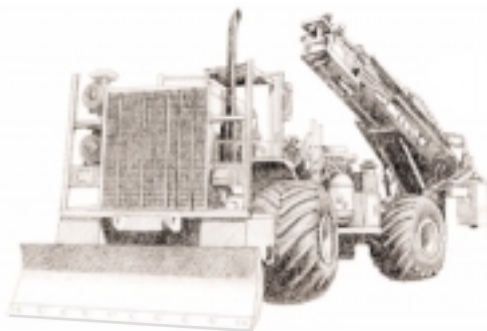
**American  
Assay &  
Environmental  
Laboratories**

**Elko Office**  
2320 Last Chance Road  
Elko, NV U.S.A. 89801-4852  
Telephone/Fax (775) 738-9100

E-mail: AALADMIN@aallabs.net  
Website: www.aallabs.com



**DIVERSIFIED DRILLING, LLC**



*Providing Drilling Services To The  
Mining/Metals Industry Since 1980*

3650 Grant Creek Road  
Missoula, Montana 59808  
Phone: (406) 542-1010 Fax: (406) 542-5065  
www.diversifieddrilling.com

**Big Sky Geophysics**

Clark Jorgensen, M.Sc.  
Geophysicist

*Field Work  
Processing  
Interpretations*

P.O. Box 353  
Bozeman, MT 59771  
USA

Phone: (406) 587-6330  
Fax: (406) 587-6394  
Mobile: (406) 580-9718  
clark@bigskygeo.com

**For more details, my background, and case studies,  
visit my webpage at [www.bigskygeo.com](http://www.bigskygeo.com)**

**Jo Beth Allen  
Professional Graphics**

CAD Drafting/Digitizing/Scanning  
High Resolution Presentation Graphics  
Plotting/Printing  
Geologist

1055 Joshua Drive  
Reno, Nevada 89509

Phone: 775-324-7960  
Fax: 775-324-7583

jobeth@yellowsb.net

## MINERAL EXPLORATION SERVICES

SOIL SAMPLING  
CLAIMSTAKING  
PROPERTY EVALUATION  
MINE HAZARD FENCING

5655 Riggins Ct., #15, Reno, NV 89502  
Tel: (775) 954-1082 Fax: (775) 829-6882  
email: day@mineralexploration.com



**Enviroscientists, Inc.**

4600 Kietzke Lane, Suite C 129, Reno, Nevada 89502  
Phone: (775) 826-8822 Fax: (775) 826-8857

**Notices, Plans of Operations,  
Cost Estimates, TRI, Biological Surveys,  
Air Quality Permits & Audits**

Info@enviroincus.com www.enviroincus.com



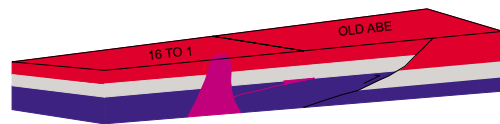
**WESTERN RECON**  
and  
**Mineral Exploration Inc.**

**Claim Staking / Soil Sampling / Grids  
Experienced / Dependable/ Trimble GPS**  
Gary Castagne 775-250-4879  
John Fernandez 775-815-2587

[www.westernrecon.com](http://www.westernrecon.com)

## GIS Land Services

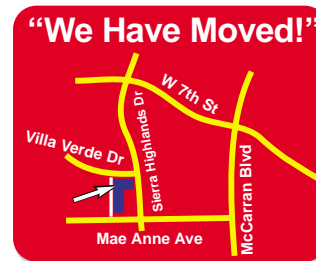
Greg Ekins M.S. R.L.P. #32306 President  
Mineral Landman - GIS Cartographer



Surface Title  
Mineral Title

**"From Courthouse Records to Final Map"**

- Land Status Maps
- Geologic
- Geo Chem
- AutoCad Map
- Arc Map
- Mapinfo
- Discover
- Power Point



5365 Mae Anne Ave B-14A  
Reno, NV 89523  
P:775-746-8803  
P:775-746-2110  
F:775-746-8802  
E:greg@gislandservices.com

[www.gislandservices.com](http://www.gislandservices.com)

## ALS Chemex



We are a global analytical testing company serving the mining and mineral exploration industry in Nevada and around the world.

### We specialise in:

- Assaying and geochemical analysis for mining and mineral exploration projects
- On-site contract mine laboratory management
- Environmental monitoring of mining operations
- Acid mine drainage studies

Contact our laboratories in Nevada to find out how we can help you with all of your project's analytical needs.

### RENO, NV

Phone: 775 356 5395

### ELKO, NV

Phone: 775 738 2054

### WINNEMUCCA, NV

Phone: 775 625 4192

[www.alschemex.com](http://www.alschemex.com)

*Right solutions....  
....Right partner*



**ENVIRONMENTAL SERVICES  
FOR THE MINING INDUSTRY**

**environmental consultants, inc.**

- Baseline Studies
  - Environmental Permitting
  - Monitoring & Compliance
  - Reclamation & Closure Plans
  - Investigation & Remediation
- Elko Location  
775-738-8766**

[www.jbrnv.com](http://www.jbrnv.com)

Reno and Salt Lake City locations



**Carlin Trend Mining  
Supplies & Service**

[www.carlintrend.com](http://www.carlintrend.com)

369 5th St., Elko, NV 89801  
(775) 778-0668, Fax: (775) 778-0687, [carlintrend@frontiernet.net](mailto:carlintrend@frontiernet.net)

Geological Consulting - Claim Staking - Soil Sampling  
Geology & Drafting Supplies - AutoCad & GIS  
Temporary Employees In All Fields

# Sample Bags

HUGE INVENTORY

LOW, LOW PRICES



**NEW ADDRESS!**

**LEGEND, INC.**

988 Packer Way  
Sparks, NV 89431

Off Glendale east of McCarran

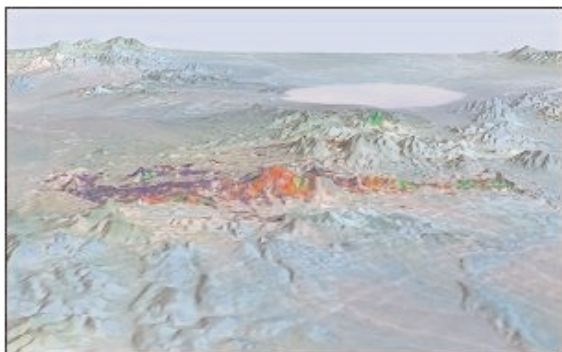
phone: (775) 786-3003

fax: 786-3613

[www.Lmine.com](http://www.Lmine.com)

email: [info@Lmine.com](mailto:info@Lmine.com)

## EXPLORATION with ASTER



*Alteration Image, Goldfield, Nevada*

- **CUSTOM CORRECTED DATA**
- **ALTERATION IMAGERY**
- **EXTENSIVE GLOBAL ARCHIVES**

[WWW.ASTERIMAGES.COM](http://WWW.ASTERIMAGES.COM)  
email: [pusa@rmi.net](mailto:pusa@rmi.net)  
[dwc@overhill-imaging.com](mailto:dwc@overhill-imaging.com)

## RENT A PIMA!!



IDENTIFY and MAP ALTERATION  
MINERALS IN THE FIELD and CORE

CONTACT US FOR Rentals and Services

*Spectral International, Inc*

303 403 8383 [pusa@rmi.net](mailto:pusa@rmi.net)

[www.specmin.com](http://www.specmin.com)

## AIPG NEVADA SECTION 2006 REPORT

The 17<sup>th</sup> Annual Mineral Exploration Roundup will be held December 12, 2006 at the Skyroom, Holiday Inn on 6<sup>th</sup> Street in Reno, beginning at 6:00 P.M for cocktails. Dinner is at 7:00 and the program starts at 8:00 P.M.

The speakers are:

Mark Abrams, *Agnico-Eagle*, Bill Stanley, *Atna Resources*, Ron Parratt, *AuEx Ventures*, Ed Cope, *Barrick Gold*, Andy Wallace, *Columbus Gold/Cordex*, Darcy

Maude, *Meridian Gold*, Ken Cunningham, *Miranda Gold*, Donald Harris, *Newmont*, Bob Felder, *NewWest Gold* and Ann Carpenter, *US Gold*.

Eklund Drilling is sponsoring the cocktails and is subsidizing the student attendees (students pay \$5). Mark Stock, Global Hydrologic Services, is sponsoring the crystal specimen door prizes. Cost of the Dinner Meeting is \$40.00, cash or check please. The Skyroom holds about 100 people, so get your reservation in early. Last year we had 107 and that is about the maximum we can put in the place. Contact Kel Buchanan at 786-4515; fax 786-4324 or [SummitCrk@aol.com](mailto:SummitCrk@aol.com).



## FALL FIELD TRIP WRAP-UP

Gregory Hill, *GSN Vice President*

The 2006 GSN Fall Field Trip was a great success with 50 participants along for visits to Bald Mountain mine, the Lookout Mountain deposit south of Eureka, and the East Archimedes deposit at the Ruby Hill mine. Field trip leaders Keith Bettles, Dave Mathewson, and Kevin Russell each provided an excellent tour and Alan Chamberlain gave an interesting and well received talk on the structure and stratigraphy of the Pinon Range. Each of the field trip leaders provided new information that is included in the guidebook, Special Publication 43. In addition to the articles by the field trip leaders, Greg Arehart provided a new paper on apatite fission track and isotope geochemistry at Bald Mountain.

A common theme was new discoveries in old or established districts. Bald Mountain is a good example of this as reserves have quietly grown to 3.3 million oz gold. Measured and indicated resources add another 844,000 oz gold in the district. The Lookout Mountain deposit is another example of a new discovery in an established district. Utilizing a deposit model based in part on certain Carlin type deposits, Staccato has been successful in defining new mineralization containing 201,000 oz gold using a 0.10 oz Au/st cutoff or 619,000 oz gold using a 0.01 oz Au/st

cutoff. The West and East Archimedes deposits at the Ruby Hill project also represent significant discoveries in an old district. Prestripping of the East Archimedes zone began in July 2005 and first gold production is forecast for January 2007.

The trip was a great opportunity to make new friends, get reacquainted with old ones, and see some great geology along the way. Barrick and Staccato Gold Resources were very generous in providing access to these properties and we thank them. Generosity was also provided by our sponsors, Boart Longyear, Agnico Eagle (USA) Ltd., and Enviroscentists, Inc. Thank you all for supporting GSN.



Geologists looking at core in the Archimedes pit.

## WINNEMUCCA CHAPTER DECEMBER 14<sup>th</sup> MEETING ABSTRACT

### THE HISTORY, DEVELOPMENT PLANS AND EXPLORATION POTENTIAL OF THE BOREALIS GOLD PROJECT, MINERAL COUNTY, NEVADA

Steven D. Craig, Gryphon Gold Corporation

The Borealis gold project is located on the Aurora-Borealis trend in the Walker Lane gold belt of western Nevada. Gryphon Gold Corporation is in the predevelopment stage of mine construction and is concurrently conducting an exploration drilling program to expand gold resources.

Houston Oil and Minerals Company made the original Borealis gold discovery in 1978. The Borealis mine was put into production in 1981 by Tenneco Resources as a low-cost heap-leach mining operation. Tenneco and its successor, Echo Bay Minerals, Inc., produced a total of 10.7 million tons of ore at an average grade 0.059 ounce per ton gold for about 630,000 ounces of gold from eight separate pits. After mine closure in 1991, Echo Bay joint ventured the project with Shell Billiton and later with Santa Fe Pacific Gold. Both conducted additional exploration and development on the property. In 1997, J. D. Welsh and Associates acquired the lease from underlying owners and they entered into a joint venture with Cambior Exploration for two years. Golden Phoenix Minerals acquired the rights to the project in late 1998. They managed the project until it was joint ventured in 2003 with Gryphon Gold Corporation.

*continued on page 10*

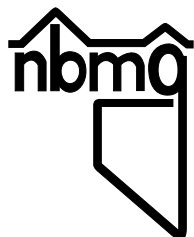
## WINNEMUCCA CHAPTER ABSTRACT

continued from page 9

Gryphon gained complete control of the project in early 2005.

In 2006 Gryphon obtained all operating permits and completed a positive feasibility study for an open pit heap leach operation. The company is currently in the process of obtaining \$15.4 million of project financing, which will allow it to construct and operate the new mine. The company projects an annual production rate of 60,000 ounces per year with the first gold pour targeted for completion within 8 months of securing financing. The cash flow from this mine is expected to fund the exploration programs required to fully assess this large multi-target gold property and participation in other opportunities.

The Company has developed an exploration model based on geological and geophysical characteristics of the high sulfidation hydrothermal systems found at Borealis. This model includes the integration of aeromagnetism and IP/resistivity gradient array surveys, geologic and structural interpretations, and the presence of gold within permissive hydrothermally altered rocks. Current work has modeled and expanded the Graben deposit, with exploration drilling efforts now focused on multiple new targets previously untested within the district.



**Nevada Bureau of  
Mines and Geology**

**NEW PUBLICATIONS**

The following publications are new at NBMG:

**Revised versions of plates 1-16 plus new plate 17:**

**OF06-12** - Potential resources associated with proposed roadless areas in Nevada (**Second edition**) by Ronald H. Hess and Jonathan G. Price, set of 17 plates, scale 1:1,000,000, and 2-page text, available **free on the Web** or for purchase at:  
<<http://www.nbmj.unr.edu/sales/pbsdtls.php?sku=OF06-12>>

**OF06-13** - Preliminary geologic map of the north half of the **Fernley West** Quadrangle, Lyon, Storey, and Washoe Counties, Nevada, by James E. Faulds and Alan R. Ramelli, \$15.00 or **free on the Web** at:  
<<http://www.nbmj.unr.edu/sales/pbsdtls.php?sku=OF06-13>>

**OF06-14** - Preliminary geologic map of the **Seven Lakes Mountain** Quadrangle, Washoe County, Nevada, and Lassen County, California, by Christopher D. Henry, Alan R. Ramelli, and James E. Faulds, \$21.00 map and text, \$18 map only, or **free on the Web** at:

<<http://www.nbmj.unr.edu/sales/pbsdtls.php?sku=of06-14>>  
<<http://www.nbmj.unr.edu/sales/pbsdtls.php?sku=of06-14m>>

**OF06-15** - Preliminary geologic map of the north half of the **Searchlight** Quadrangle, Clark County, Nevada, by James E. Faulds, Alan R. Ramelli, and Haroldo Lledo, \$19.00 map and text, \$16 map only, or **free on the Web** at:  
<<http://www.nbmj.unr.edu/sales/pbsdtls.php?sku=OF06-15>>,  
<<http://www.nbmj.unr.edu/sales/pbsdtls.php?sku=OF06-15m>>

**OF06-16** - Preliminary geologic map of the **Flowery Peak** Quadrangle, Lyon and Storey Counties, Nevada, by Stephen B. Castor, P. Kyle House, and Donald M. Hudson, \$20.00 map and text, \$16.00 map only, or **free on the Web** at:  
<<http://www.nbmj.unr.edu/sales/pbsdtls.php?sku=OF06-16>>  
<<http://www.nbmj.unr.edu/sales/pbsdtls.php?sku=OF06-16m>>

**OF06-17** - Preliminary geologic map of the north half of the **Jerritt Canyon** mining district, Elko County, Nevada, by John L. Muntean and Christopher D. Henry, \$20.00, or **free on the Web** at:  
<<http://www.nbmj.unr.edu/sales/pbsdtls.php?sku=OF06-17>>

### New publications on Nevada from the USGS:

**USGS OFR 2006-1040** - Geologic cross sections of parts of the Colorado, White River, and Death Valley regional ground-water flow systems, Nevada, Utah, and Arizona, by Page and others, **free on the Web** at <<http://pubs.usgs.gov/of/2006/1040/>>  
(See also **NBMG Map 150** at  
<<http://www.nbmj.unr.edu/sales/pbsdtls.php?sku=M150>>)

**USGS OFR 2006-1160** - Geophysical data from the Spring and Snake Valleys area, Nevada and Utah by Mankinen and others, **free on the Web** at <<http://pubs.usgs.gov/of/2006/1160/>>

**USGS OFR 2006-1176** - Geophysical investigations of the Smoke Creek Desert and their geologic implications, northwest Nevada and northeast California, by Ponce and others, **free on the Web** at <<http://pubs.usgs.gov/of/2006/1176/>>

**USGS OFR 2006-1280** - Metallogeny of the Great Basin: Crustal evolution, fluid flow, and ore deposits, by Albert H. Hofstra and Alan R. Wallace, September 2006, free at  
<<http://pubs.usgs.gov/of/2006/1280/>>

**USGS OFR 2006-1299** - Inversion of gravity data to define the pre-Cenozoic surface and regional structures possibly influencing groundwater flow in the Rainier Mesa region, Nye County, Nevada, by Hildenbrand and others, **free on the Web** at  
<<http://pubs.usgs.gov/of/2006/1299/>>

**USGS Scientific Investigations Report 2006-5206** - Quantification of the contribution of nitrogen from septic tanks to ground water in Spanish Springs Valley, Nevada, by Michael R. Rosen, Christian Kropf, Karen A. Thomas, **free on the Web** at  
<<http://pubs.usgs.gov/sir/2006/5206/>>

You may **place an order** through our shopping cart at:  
<<http://www.nbmj.unr.edu/sales.htm>> or by calling (775) 784-6691 x2.

## UPCOMING EVENTS

**Dec. 1** – NV PETROLEUM SOCIETY HOLIDAY CHRISTMAS PARTY (door prizes but no speaker). Austin's Restaurant, 7671 South Virginia St, Reno, cocktails at 6:30 pm. Dinner at 7:00 pm (\$17 for members; \$19 for non-members). Contact Diane Phillips for reservations. 775/267-4663, email: trailsend@pyramid.net.

**Dec. 5** – ARIZONA GEOLOGICAL SOCIETY DINNER MEETING. Steven Semken, ASU. Topic: Ethnogeology & Geoscience Teaching. Inn Suites Hotel: 475 N. Granada Ave, Tucson, AZ. Call 520/663-5295 for reservations.

**Dec. 4-8** – NORTHWEST MINING ASSOCIATIONS 112<sup>th</sup> ANNUAL MEETING, Exposition and Trade Show will be held at John Ascuagas Nugget Casino-Resort in Reno, Nevada. For information, please see the home page on this website or call Pat Heywood at the NWMA office in Spokane, WA at 509/624-1158. Email: pheywood@nwma.org, <http://www.nwma.org>.

**Dec. 7, Thursday** (Note Change) – SO NEVADA CHAPTER MEETING: Speaker: Steve Scott, Clark County School District. Topic - Steve will talk about current activities of the "Museum Without Walls" program, which features a mobile display of rocks, minerals, and fossils that visits district schools in support of earth science courses. UNLV Lily Fong Geoscience Building, Room 105, Steve's talk will be preceded by dinner refreshments at 6:00 pm, and will be followed by a silent auction of minerals, fossils and other geological-related materials. Contact Bruce Hurley, Chapter President at 702/295-1284, [rocks2bwh@aol.com](mailto:rocks2bwh@aol.com).

**Dec. 12, Tuesday** – 17<sup>th</sup> ANNUAL AIPG EXPLORATION ROUNDUP, Holiday Inn, 6<sup>th</sup> Street, Reno from 6:00 to 10:00 pm. Eklund Drilling is sponsoring the cocktail hour and students and Mark Stock, Global Hydrogeologic Services is providing specimen door prizes. Dinner - 7:00, program - 8:00. Ten speakers from a variety of mining and exploration companies will give a short presentation on their plans and programs. Cost: \$40.00, Students, \$5.00. Reservations: Kel Buchanan, 786-4515, fax 786-4324, e-mail - [summitcrk@aol.com](mailto:summitcrk@aol.com).

**Dec. 13, Wednesday** (Note Change) – GSN CHRISTMAS MEETING & ROCK RAFFLE/SILENT AUCTION. Speaker – Dr. Rich Schweickert, UNR Dept of Geological Sciences. Title - "Neotectonics of the Tahoe Basin: Implications for Landslides and Tsunamis". Reno Elks Lodge, 597 Kumle Ln, Reno, NV. Drinks-6 pm, dinner-7 pm (\$20), talk-8 pm. Silent Auction and Raffle will be going on from 6 – 9 pm. Contact Laura Ruud for reservations, 775/323-3500, [gsn@mines.unr.edu](mailto:gsn@mines.unr.edu).

**Dec. 14, Thursday** (Note Change) – WINNEMUCCA CHAPTER MEETING. Speaker: Steven D. Craig, Gryphon Gold Corporation. Title of talk, "The History, Development Plans and Exploration Potential of the Borealis Gold Project, Mineral County, Nevada". The Martin Hotel, W Railroad and Melarkey Streets. Meeting will begin at 6 pm instead of the usual 6:30 in order to enjoy finger-food and drinks provided by the Martin Hotel and sponsored by ALS Chemex. Talk will begin at 7 pm as usual. Contact Ivan Johnston (Chapter President) at 775/635-4292, [Ivan.Johnston@Newmont.com](mailto:Ivan.Johnston@Newmont.com) for more information.

**Dec. 15, Friday** (Note Change) – ELKO CHAPTER MEETING. Speaker: Kevin Downey; topic – Caves. Western Folklife Center, 501 Railroad Street, Elko, NV. Drinks at 6:00 pm with the talk at 7:00 pm. Contact Richard Reid (Chapter President) at 775/778-3912, [Richard.Reid@newmont.com](mailto:Richard.Reid@newmont.com) for more information.

**Jan. 29 to Feb. 1, 2007** – MINERAL EXPLORATION ROUNDUP 2007, The Westin Bayshore Vancouver, Vancouver, BC, Association for Mineral Exploration British Columbia (AME BC). Phone: 604/689-4800, Fax: 604/682-5733, Email, [roundup@amebc.ca](mailto:roundup@amebc.ca).

## Warning Signs of a Fanatical Geologist

1. You judge a restaurant by the type of decorative building stone they use rather than their food.
2. You manage to turn any conversation into a discussion of geology, as in:  
"What did you think of that World Series game last night?"  
"I must have missed that conference. Who sponsored it? Geological Society of America?"
3. The only thing you notice about attractive members of the opposite sex is the stone in their jewelry.
4. You refuse to let nightfall stop your field excursions and continue looking at the outcrops using the headlights of your field vehicle.
5. You like rock music only because it's called "rock" music.
6. You name your children after rocks and minerals.
7. You're not sure if you have children.
8. You view non-geologists as subhuman.
9. You own more pieces of quartz than underwear.
10. Your rock collection weighs more than you do.
11. Your rock garden is located inside your house.
12. You can pronounce the word "molybdenite" correctly on the first try.
13. You don't think of "cleavage" the same way everyone else does.
14. You have ever uttered the phrase "have you tried licking it", with no sexual connotations involved.
15. You think the primary function of road cuts is tourist attractions.
16. You find yourself compelled to examine individual rocks in driveway gravel.
17. You're planning on using a pick and shovel while you're on vacation.
18. The baggage handlers at the airport know you by name and refuse to help with your luggage.
19. You have ever found yourself trying to explain to airport security that a rock hammer isn't really a weapon.
20. You have ever taken a 22-passenger van over "roads" that were really intended only for cattle.
21. You consider a "recent event" to be anything that has happened in the last hundred thousand years.
22. You have ever had to respond "yes" to the question, "What have you got in here, rocks?"

**GEOLOGICAL SOCIETY OF NEVADA**



gsn@mines.unr.edu • www.gsnv.org  
Telephone (775) 323-3500 FAX (775) 323-3599  
Post Office Box 13375  
Reno NV 89507  
USA

NON PROFIT  
ORGANIZATION  
U.S. POSTAGE  
PAID  
RENO, NV  
PERMIT NO. 931



*Merry  
Christmas*

