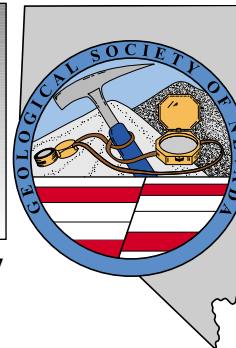


# GEOLOGICAL SOCIETY OF NEVADA NEWSLETTER

Geological Society of Nevada, PO Box 13375, Reno, NV 89507 USA, 775/323-3500, [www.gsnv.org](http://www.gsnv.org)  
Office location: Laxalt Mineral Research Center, Rm 266, UNR. Hours: Mon thru Fri, 9-3:30 pm



December 2007, Vol. 22, No. 10

Published monthly except June and July

## PRESIDENT

**Greg Hill**  
Harvest Gold Corp. (US)  
[hillgreg@charter.net](mailto:hillgreg@charter.net)

## VICE PRESIDENT

**Marcus Johnston**  
Victoria Resources US Inc  
[marcus@apexmineralresources.com](mailto:marcus@apexmineralresources.com)

## TREASURER

**Camille Prens**  
Mine Development Associates  
[cami@mda.com](mailto:cami@mda.com)

## MEMBERSHIP CHAIR

**Opal Adams**  
Enviroscientists, Inc.  
[ofadams@enviroincus.com](mailto:ofadams@enviroincus.com)

## PUBLICATION CO-CHAIRS

**Marilyn Miller**  
AuEx, Inc.  
[marilyn.miller1@sbcglobal.net](mailto:marilyn.miller1@sbcglobal.net)

## Debbie Schneider

Schneider and Schneider Assoc  
[dschneider41@charter.net](mailto:dschneider41@charter.net)

## OFFICE MANAGER

**Kelly Parsons**  
[gsn@gsnv.org](mailto:gsn@gsnv.org)

## CALENDAR OF GSN EVENTS

### December 8<sup>th</sup>, Saturday

SOUTHERN NEVADA CHAPTER has scheduled a joint Christmas Event with the Nevada Friends of Paleontology (FOP) for Saturday evening, December 8<sup>th</sup>. The location has still not been finalized. The event will include a brief talk by the FOP on recent excavations at the Gilcrease Springs megafauna fossil site, a Silent Auction of "Things Geologic", and holiday refreshment.

### December 12<sup>th</sup>, Wednesday

WINNEMUCCA CHAPTER: Martin Hotel, drinks at 6:30 pm and talk at 7:30 pm. Speaker: Randy Vance, Newmont Mining Corp. Topic: "Photographic Travelogue of Geothermal Features, Countryside, and Epithermal Veins on the Northern Island of New Zealand, and Pajingo, Queensland, Australia".

### December 19<sup>th</sup>, Wednesday

GSN MEMBERSHIP MEETING: Reno Elks Lodge, 597 Kumle Ln, Reno, NV. GSN will be celebrating their 50<sup>th</sup> anniversary along with the holiday party. Drinks at 6 pm, dinner at 7 pm, and the Ghost of Mark Twain at 8 pm featuring McAvoy Layne. Contact Kelly Parsons for reservations, 775/323-3500, [gsn@gsnv.org](mailto:gsn@gsnv.org).

### December 20<sup>th</sup>, Thursday

ELKO CHAPTER: Western Folklife Center beginning at 5:30 pm. Sponsored by Cougar Gold and will include dinner catered by the Flying Fish restaurant. Speaker: Moira Smith. Topic: "The Seven Summits: An Up Close and Personal View of the Tallest Peak on Each Continent". Includes annual silent mineral auction to raise money for the scholarship fund. Donations for the mineral auction are needed (bring your specimen and a description to the meeting) and are tax deductible.



GSN's November monthly meeting was well attended with 101 folks having dinner, including 14 students from UNR and 4 Honorary Members.

## FROM THE PRESIDENT

Greg Hill, *GSN President 2007-2008*

Thanks to Andy Wallace for speaking about the history of Cordex at the November membership meeting in Reno. The talk was well received and informative, and reiterated what explorationists know, that discovery requires persistence, diligence, hard work, and serendipity. Obviously the Cordex team knows how to put these things together as demonstrated by their track record of discoveries at places like Pinson, Marigold, Dee, and others.

We have a new office manager. Her name is Kelly Parsons and she began work in mid-November. Kelly's enthusiasm is readily apparent and she is doing an admirable job after being thrown into the fire without much time to get acclimated. Stop in and say hello to Kelly if you are on the UNR campus.



## DECEMBER MEETING SPONSOR



GRASSROOTS  
TO  
DEVELOPMENT

**Geologists Wanted**

"REALLY GOOD SUBMITTALS INVITED"

5470 LOUIE LANE, SUITE 102  
RENO, NEVADA 89511

(775) 828-6070  
FAX (775) 828-6089

The Geological Society of Nevada is fifty years old and we will be celebrating at the December meeting. Please come join us in mid-December for a fun-filled evening featuring McAvoy Layne as the ghost of Mark Twain. The

*continued on page 2*



## News and Announcements

### FROM THE PRESIDENT *continued from page 1*

annual silent auction and raffle will also be held at the December meeting and provides an opportunity to pick up some nice holiday gifts. A more thorough description of the event is contained below in this newsletter. I look forward to seeing you there!

### MACKAY CONNECTIONS CLUB ANGEL TREE

These three students, Laura Garchar (Geol. Engineering student), Wesley Henson (Geology student), and Molly Hunsaker (Geology student), are from the Mackay Connections Club and they brought an Angel tree to the GSN meeting. They collected money for those people who did not want to shop and signed out Angel slips to those who wanted to provide their own gift. Three people volunteered their office for drop off of Angel gifts: Enviroscientists at 4600 Kietzke Lane, Ste C129; MDA at 210 South Rock Blvd; and AuEx at 940 Matley Lane, Ste 17.



### GSN HOLIDAY PARTY– ROCK RAFFLE AND SILENT AUCTION

Please help make the GSN Foundation fundraiser “Rock Raffle and Silent Auction” at the annual Christmas meeting the best one yet. We need your donations of any items suitable for raffle – gift baskets, nice rock or mineral samples, gemstones, jewelry, gift certificates, wine or other spirits, logo items, geological equipment or publications, commemorative coins, GOLD, or any geology/mining-related items are welcome. Raffle proceeds support GSN Foundation’s educational projects, which include grants to Nevada K-12 classes for transportation on earth science related field trips, scholarships to UNR and UNLV geology students, grants to the UNR DeLaMare Library, and grants for geologic mapping in Nevada. Donors’ names & companies will be displayed on signs at the event as well as listed in the January newsletter. Please send donated items to us at the addresses below to arrive before the December meeting date, or call to arrange pick-up of donated items if you are in the Reno-Sparks-Carson City area. Thank you for your support!

D.D. & Rachel, GSN  
*Foundation Trustees and Education Co-Chairs*

D.D. LaPointe  
NBMG/MS 178  
University of Nevada, Reno  
Reno, NV, 89557-0088  
775/682-8772 phone, 775/784-1709, fax  
e-mail: [dlapointe@unr.edu](mailto:dlapointe@unr.edu)

Rachel Dolbier, Administrator  
W.M. Keck Earth Science and  
Mineral Engineering Museum  
MS 168/University of Nevada, Reno  
Reno, NV 89557  
775/784-4528 phone, 775/784-1766 fax  
[rdolbier@mines.unr.edu](mailto:rdolbier@mines.unr.edu)

The GSN Foundation is a 501(c)(3) public charity,  
tax ID # 88-0447867



**Thanks to HARVEST GOLD CORP. for  
hosting the November meeting.**

# *GSN December 19, 2007 Membership Meeting*

---

**Date:** Wednesday, December 19, 2007

**Time:** Social-6:00, Dinner-7:00 (\$20), Meeting-8:00

**Reservations:** 775/323-3500; fax 323-3599,  
e-mail [gsn@gsnv.org](mailto:gsn@gsnv.org)

**Deadline:** Reserve by 1 pm Tuesday, December 18<sup>th</sup>

**Location:** Elks Lodge, 597 Kumle Lane, Reno, NV

**Directions:** Across (W) from the Reno-Sparks Convention Center (S Virginia St), behind the Les Schwab Tire Center

**Speaker/topic:** McAvoy Layne as Mark Twaine.

---

## THE GHOST OF MARK TWAIN

GSN is celebrating a very special 50<sup>th</sup> anniversary and their holiday party on December 19, 2007, at the Elks Lodge in Reno. Please bring your date and be prepared to meet the Ghost of Mark Twain. For 20 years, McAvoy Layne has played Mark Twain in over two thousand performances from Leningrad University in Russia to C-Span, McAvoy Layne has survived, and in fact been preeminent, in preserving the wit & wisdom of "The Wild Humorist of the Pacific Slope." Says McAvoy, "It's like being a Monday through Friday preacher, whose sermon, though not reverently pious, is fervently American." This is entertainment that everyone will enjoy.

A fabulous dinner of prime rib and chicken cordon bleu is planned as well as wine at the table and a bar generously sponsored by Agnico-Eagle. Make your plans now to attend the dinner, show, and exciting silent auction and raffle. Help the GSN foundation by donating items now. Contact DD Lapointe [dlapoint@unr.edu](mailto:dlapoint@unr.edu) or Rachel Dolbier [rdolbier@unr.edu](mailto:rdolbier@unr.edu) for information.

This is likely to be a sold out event so make your reservation early by contacting Kelly Parsons, GSN Office Manager at (Phone) 775-323-3500, (Fax) 775/323-3599, or [gsn@gsnv.org](mailto:gsn@gsnv.org). The cost of dinner is \$20.00 per person. The bar and auction/raffle open at 6:00 pm, dinner starts at 7:00 pm, and Mr. Twain entertains at 8:00 pm. We look forward to seeing you for GSN's 50<sup>th</sup> anniversary celebration!



*Merry  
Christmas*



# ACTIVITY UPDATE

Mike Brady, October 2007  
www.activityupdate.com

## NEVADA

Cameco Corp. announced that it purchased 5,600,000 shares (10%) of Western Uranium Corp. for \$21,200,000. (resource @ Kings Valley = 8,580,000 tons @ 0.10% U3O8 inferred) *N.M.: September 17*

Fury Exploration Ltd. announced that based on recent drill results at the Taylor Project, resources aggregate 6,430,000 tons @ 2.31 opt Ag measured+indicated and 757,000 tons @ 2.54 opt Ag inferred. (was 5,920,000 tons @ 2.7 opt Ag inferred) *N.M.: September 17*

Cypress Development Corp. announced that recent drill results at the Gunman Project include 184-207 feet @ 1.6% Zn, 0.65 opt Ag (GD-01); 126-147 feet @ 0.1% Zn, 1.2 opt Ag (GD-02); 97-122 feet @ 1.2% Zn (GD-11) and 173-227 feet @ 4.0% Zn, 0.40 opt Ag (GD-11). *Press Release: October 12*

Miranda Gold Corp. announced that recent core drill results at the Redlich Project include 210-265 feet @ 0.028 opt Au (RD-1); 1,050-1,070 feet @ 0.020 opt Au (RD-1) and 955-960 feet @ 0.015 opt Au (RD-2). *Press Release: October 15*

Metallic Ventures Gold Inc. announced that it purchased the underlying 5% NSR on 2,388 patented and 5,411 unpatented acres within the Goldfield Mining District (representing 38% of its holdings within the district) from a private owner for \$500,000 cash. (resource = 12,782,000 tons @ 0.037 opt Au measured) *Press Release: October 5*

Klondex Mines Ltd. announced that recent drill results at the Fire Creek Project include 595-710 feet @ 0.058 opt Au (FC07-41) and 720-790 feet @ 0.146 opt Au (FC07-42). (resource = 1,760,000 tons @ 0.582 opt Au inferred) *Press Release: October 19*

Rye Patch Gold Corp. announced that recent drill results at the Wilco (Willard) Project include 0-50 feet @ 0.014 opt Au (WR014); 25-50 feet @ 0.016 opt Au (WR015); 10-20 feet @ 0.010 opt Au (WR017); 80-90 feet @ 0.016 opt Au (WR018); 85-100 feet @ 0.014 opt Au (WR019) and 25-40 feet @ 0.011 opt Au (WR020). (resource = 3,890,000 tons @ 0.022 opt Au indicated and 11,760,000 tons @ 0.022 opt Au inferred) *Press Release: October 17*

AuEx Ventures Inc. announced that recent drill results at the Long Canyon Project include 64-82.3 meters @ 0.104 opt Au (LC-041); 82.3-85.3 meters @ 0.035 opt Au (LC-042); 99.1-120.4 meters @ 0.166 opt Au (LC-043) and 89.9-97.5 meters @ 0.106 opt Au (LC-044). *Press Release: October 17*

AuEx Ventures Inc. announced that recent drill results at the West Pequop Project include 370-380 feet @ 0.033 opt Au (WN-074); 15-35 feet @ 0.012 opt Au (WN-075); 400-415 feet @ 0.014 opt Au (WN-076); 85-110 feet @ 0.032 opt Au (WN-077) and 0-50 feet @ 0.025 opt Au (WN-080). *Press Release: September 24*

Midway Gold Corp. announced that recent drill results at the Pan Project include 0-200 feet @ 0.032 opt Au (PN07-65); 0-190 feet @ 0.042 opt Au (PN07-78); 75-150 feet @ 0.013 opt Au (PN07-85) and 65-85 feet @ 0.011 opt Au (PN07-87). (resource = 17,900,000 tons @ 0.019 opt Au indicated) *Press Release: October 2*

Midway Gold Corp. announced that recent drill results at the Thunder Mountain Project include 55-125 feet @ 0.105 opt Au (TM07-04) and 110-115 feet @ 0.013 opt Au (YM07-05). *Press Release: October 18*

Consolidated Gold Win Ventures Inc. announced that recent drill results at the Dolly Varden Project include 148.8-157 meters @ 0.05% Cu (DV07-12) and 88-90 meters @ 0.10% Cu (DV07-14). *Press Release: October 22*

Quaterra Resources Inc. announced that recent drill results at the MacArthur Project include 119-149 feet @ 0.20% Cu (QMCC-1); 34-115.3 feet @ 0.21% Cu (QMCC-2); 107-334 feet @ 0.22% Cu (QMCC-3) and 42.1-87 feet @ 0.23% Cu (QMCC-4). (resource = 29,000,000 tons @ 0.28% Cu inferred) *Press Release: October 9*

Galway Resources Ltd. announced that recent drill results at the Indian Springs Project include 34-45 feet @ 0.85% WO3 (ISC07-125); 45-89 feet @ 0.17% WO3 (ISC07-126) and 131-140 feet @ 0.40% WO3 (ISC07-126). (resource = 10,800,000 tons @ 0.171% WO3 indicated) *Press Release: September 26*

Gateway Gold Corp. announced that recent drill results at the Lower Mac Ridge Project include 0-65 feet @ 0.049 opt Au (MR07-01); 80-105 feet @ 0.022 opt Au (MR07-02) and 15-65 feet @ 0.051 opt Au (MR07-03). *Press Release: October 25*

Grandview Gold Inc.(20%) announced that recent drill results at the Pony Creek/Elliot Dome Project include 128-164.6 meters @ 0.064 opt Au (PC07-16) and 123.4-157 meters @ 0.167 opt Au (PC-20). (resource = 1,124,000 tons @ 0.057 opt Au inferred) *Press Release: October 10*

Metallic Ventures Gold Inc. announced that recent drill results at the Converse Project include 572.3-600 feet @ 0.007 opt Au (NK-181C); 118-626.5 feet @ 0.029 opt Au (NK-209C); 309.5-950 feet @ 0.019 opt Au (NK-213C) and 145-198.5 feet @ 0.016 opt Au (NK-226C). (resource = 262,350,000 tons @ 0.015 opt Au measured+indicated) *Press Release: October 5*

U.S. Gold Corp. announced that recent drill results at the Limo Project include 146.5-158 feet @ 0.011 opt Au (L-01); 267-293 feet @ 0.166 opt Au (L-03); 101-127 feet @ 0.013 opt Au (L-04) and 150-366 feet @ 0.038 opt Au (L-06). *Press Release: October 4*

U.S. Gold Corp. announced that recent drill results at the Tonkin Project include 175-225 feet @ 0.053 opt Au (T-104); 275-309 feet @ 0.084 opt Au (T-141); 236-249 feet @ 0.010 opt Au (T-145); 132-156 feet @ 0.115 opt Au (T-146) and 306-361 feet @ 0.147 opt Au (T-148). (reserve = 10,637,000 tons @ 0.061 opt Au proven+probable) *Press Release: October 4*

Coral Gold Resources Ltd. announced that recently completed hole TV07-2, which was collared in the NW corner of the Robertson Property, intersected lower plate rocks at a depth of 3,080 feet. It also intersected 3,090-3,100 feet @ 0.064 opt Au; 3,120-3,140 feet @ 0.042 opt Au and 3,150-3,160 feet @ 0.010 opt Au. *Press Release: October 5*

**VISIT THE GSN WEBSITE AT:**  
**[www.gsnv.org](http://www.gsnv.org)**





**Drew Wheeler (Mining Eng), Rusty Turner (Hydrogeology), and Sam Saunders (Geol. Engineering). Mackay students.**

## UPCOMING EVENTS

**December 1<sup>st</sup>** – SME Northern Nevada Christmas Party - Harrah's Prospector's Room in Reno, NV, 6 pm to midnight, \$48 per person, email Kathy Altman at [kaltman@mines.unr.edu](mailto:kaltman@mines.unr.edu) for reservations.

**December 3-7** – 113 NWMA Annual Meeting and Expo, Spokane WA. A brochure about this must-attend, year-end mining event is downloadable at [www.nwma.org/pdf/.pdf](http://www.nwma.org/pdf/.pdf).

**December 8<sup>th</sup>** – Southern Nevada Chapter has scheduled a joint Christmas Event with the Nevada Friends of Paleontology (FOP) for Saturday evening, December 8<sup>th</sup>. The location has still not been finalized. The event will include a brief talk by the FOP on recent excavations at the Gilcrease Springs megafauna fossil site, a Silent Auction of "Things Geologic", and holiday refreshment.

**December 11<sup>th</sup>** – AIPG 18<sup>th</sup> Annual Exploration Round-up, 8 speakers from industry; 6:00 pm at the Holiday Inn, 6<sup>th</sup> Street, Reno, NV. Cocktails and students sponsored by Eklund Drilling, dinner at 7:00, program at 8:00. Contact Kel Buchanan for reservations, 775/786-4515, [summitcrk@aol.com](mailto:summitcrk@aol.com). AIPG-GSN members and spouses, \$40, students, \$5, and non-members \$50. Please reserve by December 7, 2007. See page 7 for more information.

**December 12<sup>th</sup>, Wednesday** – Winnemucca will have a member meeting at the Martin Hotel with drinks at 6:30 and the talk at 7:30. Speaker: Randy Vance, Newmont Mining Corp. Topic: "Photographic Travelogue of Geothermal Features, Countryside, and Epithermal Veins on the Northern Island of New Zealand, and Pajingo, Queensland, Australia".

**December 19<sup>th</sup>, Wednesday** – GSN will be celebrating their 50<sup>th</sup> anniversary along with the holiday party at the Reno Elks Lodge, 597 Kumle Ln, Reno, NV. Drinks at 6 pm, dinner at 7 pm, and the Ghost of Mark Twain at 8 pm featuring McAvoyn Layne, Contact Kelly Parsons for reservations, 775/323-3500, [gsn@gsnv.org](mailto:gsn@gsnv.org).

**December 20<sup>th</sup>, Thursday** – Elko Chapter: Western Folklife Center beginning at 5:30 pm. Sponsored by Cougar Gold and will include dinner catered by the Flying Fish restaurant. Speaker: Moira Smith. Topic: "The Seven Summits: An Up Close and Personal View of the Tallest Peak on Each Continent". Includes annual silent mineral auction to raise money for the scholarship fund. Donations for the mineral auction are needed (bring your specimen and a description to the meeting) and are tax deductible.

## Thank you to our generous donors

GSN would like to thank the following members for the generous donations to the Foundation and Student Dinner Funds:

### GOLD LEVEL DONORS \$500+

Gene Saucier  
Ed Chipp

### SILVER LEVEL DONORS \$100-\$499

Steve Green	Dave Mathewson
Richard Bedell	John Prochnau
Odin Christensen	Debra Struhsacker
Malissa Mateer	Larie Richardson
Ken Cunningham	Foster Wilson
Karl Marlowe	Joe Kizis

### BRONZE LEVEL DONORS \$1-\$99

Hochschild Mining (US) Inc.	Curt Dechert
Howard Adams	Debbie Schneider
Karl Frost	John Lucas
Marshall Keller	Alan Lander
Miles Silberman	Donald Pietz
Pam Zohar	John Torres
Seth Ames	Nick Saines
Shane Spor	Marilyn Miller
Steve Sutherland	Mareen Leshendok
Bruce Hurley	Ken Ainsworth
Mike Visher	Hendrik G. Van Oss
Ted Wilton	Jose Portacio
Chester Nichols – Library	Mike Ressel
	Robert Laidlaw

### Student Dinner Fund

Alan Lander	Ken Cunningham
Brock Reidell	Larie Richardson
D. Struhsacker	Larry Lackey
Dave Mathewson	Marilyn Miller
Gary Nordin	Melissa Mateer
Greg Ekins	Nick Saines
Jim Arden	Richard Bedell
Joel Casburn	Roger Steininger
John Prochnau	Tom Callicrate
Ken Ainsworth	Vic Ridgley

# 2007-2008 MEMBERSHIP DIRECTORY

## ADVERTISEMENTS FOR THE GOLD PAGES

It is time to get your advertisements in for the 2007/2008 Membership Directory. Don't miss this opportunity to reach your clients. The Directory was distributed to approximately 900 members last year and we are projecting over 1,000 members. The Directory will be published in January 2008. Prices are as follows:

2" x 3 1/2"	Business Card – Horizontal	\$ 50
3 1/2" x 5"	Quarter Page – Vertical	150
5" x 7"	Half Page – Horizontal	300
3 1/2" x 10"	Half Page – Vertical	300
7" x 10"	Full Page – Vertical (Gold Pages)	450
7" x 10"	Opposite, Inside Back Cover – Vertical	600
7" x 10"	Qualified Persons Page	600
7" x 10"	Inside Back Cover – Vertical	700
7" x 10"	Inside Front Cover – Vertical	800
7" x 10"	Outside Back Cover – Vertical	1,000

**Submit a printed original and a digital file exported as a PDF, JPEG, TIFF, EPS, or PICT with preview.**

As in the past, the first complete payment received in the GSN office for a requested location will be assigned that location.

Please contact Kelly Parsons at the GSN Office, 775/323-3500, or Opal Adams, GSN Membership Chairman, at 775/826-8822 for more information or to obtain a form.

**Deadline is December 31<sup>st</sup>.**



**PAID ADVERTISEMENTS**

**GSN Newsletter  
Monthly Advertising Rates**

Business card size (3 1/2 x 2'') \$ 50.00  
 Quarter page (3 1/2 x 4 3/4'') 150.00  
 Half page (4 3/4 x 7 1/2'') 300.00  
 Classified ads \$10/line  
 (up to business card size)

For an advertising form, call the GSN office at 775/323-3500 or fax 323-3599. Digital or text ads must be received by the 20<sup>th</sup> of the month to appear in the following month's newsletter.



**JOSEPH R. ANZMAN**

*Exploration Geophysicist*

- consulting
- interpretation
- project management
- geophysical surveys
- domestic & foreign

P.O. Box 370526  
 Denver, Colorado 80237  
 303-337-4559  
 telephone/fax

HOWARD J. ADAMS  
 President

**HARD ROCK WHEELS, INC.**

4WD Pickup Rentals

14756 Pine Knolls Ln  
 Reno, Nevada 89521  
 (775) 852-2622  
 Fax (775) 852-2075

MIKE TOLBERT  
 2700 S. Cushman St.  
 Fairbanks, AK 99701  
 (907) 452-6631



**ENVIRONMENTAL SERVICES  
 FOR THE MINING INDUSTRY**

- Baseline Studies
- Environmental Permitting
- Monitoring & Compliance
- Reclamation & Closure Plans
- Investigation & Remediation

**Elko Location  
 775-738-8766**

www.jbrenv.com

Reno and Salt Lake City locations

**AIPG EXPLORATION ROUNDUP**

**December 11, 2007, 6:00 pm at the Holiday Inn, 6<sup>th</sup> Street in Reno, Nevada**

**Program:** Bar opens at 6:00 pm, dinner at 7:00 pm and program at 8:00 pm.

**Bar, dinner wine and students sponsored by Eklund Drilling.**

**Door Prizes:** native silver on barite, dogtooth calcite/phantoms sponsored by **Mark Stock, Global Hydrologic Services Inc.**

**Program:** Speakers from Fronteer Development, US Gold Corp, Gold Summit Corp., Gryphon Gold Corp., Newmont Mining Corp., Golden Odyssey Mining, Inc., Barrick Gold Exploration, Inc. and Agnico Eagle (USA) Ltd. Each speaker will give a 5-10 minute presentation reviewing 2007 results and plans for 2008.

**Please make your reservations no later than Friday, December 7 at 4:00 pm:  
 Kel Buchanan, 775-786-4515 or summitcrk@aol.com**

Cost:	AIPG and GSN members and significant others:	\$ 40.00
	Non Members:	\$ 50.00
	Students:	\$ 5.00

**Cash or checks only please**

## ALS Chemex



We are a global analytical testing company serving the mining and mineral exploration industry in Nevada and around the world.

**We specialise in:**

- Assaying and geochemical analysis for mining and mineral exploration projects
- On-site contract mine laboratory management
- Environmental monitoring of mining operations
- Acid mine drainage studies

Contact our laboratories in Nevada to find out how we can help you with all of your project's analytical needs.

**RENO, NV**  
Phone: 775 356 5395

**ELKO, NV**  
Phone: 775 738 2054

**WINNEMUCCA, NV**  
Phone: 775 625 4192

[www.alschemex.com](http://www.alschemex.com)

*Right solutions....  
....Right partner*

# Sample Bags

HUGE INVENTORY  LOW, LOW PRICES

**NEW ADDRESS!**

**LEGEND, INC.**

988 Packer Way  
Sparks, NV 89431

Off Glendale east of McCarran  
phone: (775) 786-3003  
fax: 786-3613  
[www.Lmine.com](http://www.Lmine.com)  
email: [info@Lmine.com](mailto:info@Lmine.com)



## Enviroscientists, Inc.

4600 Kietzke Lane, Suite C 129, Reno, Nevada 89502

Phone: (775) 826-8822 Fax: (775) 826-8857

**Notices, Plans of Operations,  
Cost Estimates, TRI, Biological Surveys,  
Air Quality Permits & Audits**

[Info@enviroincus.com](mailto:Info@enviroincus.com) [www.enviroincus.com](http://www.enviroincus.com)

Fire Assay  
ICP - OES  
ICP - MS  
AAS  
Custom Preparation  
Bullion Analyses  
BLEG

**Corporate Office**  
1500 Glendale Avenue  
Sparks, NV U.S.A. 89431-5902  
Telephone (775) 356-0606  
Fax (775) 356-1413

Chris Ioannakis, Managing Director,  
Analytical Services

**Elko Office**  
2320 Last Chance Road  
Elko, NV U.S.A. 89801-4852  
Telephone/Fax (775) 738-9100

E-mail: [AALADMIN@aallabs.net](mailto:AALADMIN@aallabs.net)  
Website: [www.aallabs.com](http://www.aallabs.com)

## American Assay & Environmental Laboratories



## Carlin Trend Mining Supplies & Service

[www.carlintrend.com](http://www.carlintrend.com)

369 5th St., Elko, NV 89801  
(775) 778-0668, Fax: (775) 778-0687, [carlintrend@frontiernet.net](mailto:carlintrend@frontiernet.net)

Geological Consulting - Claim Staking - Soil Sampling  
Geology & Drafting Supplies - AutoCad & GIS  
Temporary Employees In All Fields

## SERVICIOS HIDROGIS GEOGRAPHIC INFORMATION SYSTEMS

Dirk Masuch Oesterreich (Geologist, Proprietor)  
A.P. 107; Carretera a Galeana, km. 4  
Linares, Nuevo León, México, C.P. 67700  
Tel.: +52 821 212 5908, +52 821 212 8311  
[www.servicioshidrogis.com](http://www.servicioshidrogis.com)

Please ask for our maps and GIS database of stock  
exchange listed mining companies in Nevada  
[info@servicioshidrogis.com](mailto:info@servicioshidrogis.com)



## MINERAL EXPLORATION SERVICES

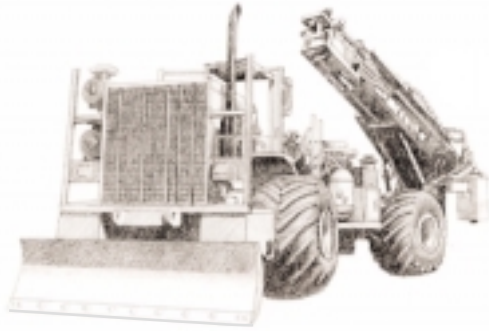
**SOIL SAMPLING  
CLAIMSTAKING  
PROPERTY EVALUATION  
MINE HAZARD FENCING**

5655 Riggins Ct., #15, Reno, NV 89502  
Tel: (775) 954-1082 Fax: (775) 829-6882  
email: [day@mineralexploration.com](mailto:day@mineralexploration.com)





**DIVERSIFIED DRILLING, LLC**

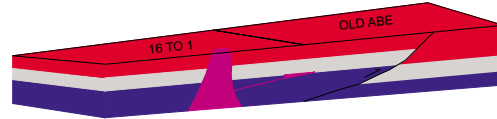


*Providing Drilling Services To The Mining/Metals Industry Since 1980*

3650 Grant Creek Road  
Missoula, Montana 59808  
Phone: (406) 542-1010 Fax: (406) 542-5065  
[www.diversifieddrilling.com](http://www.diversifieddrilling.com)

**GIS Land Services**

Greg Ekins M.S. R.L.P. #32306 President  
Mineral Landman - GIS Cartographer



Surface Title  
Mineral Title

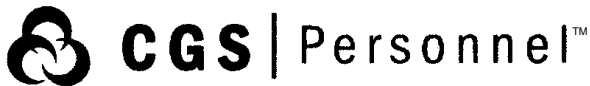
**"From Courthouse Records to Final Map"**

- Land Status Maps
- AutoCad Map
- Geologic
- Arc Map
- Geo Chem
- Mapinfo
- Discover
- Power Point



5365 Mae Anne Ave B-14A  
Reno, NV 89523  
P:775-746-8803  
P:775-746-2110  
F:775-746-8802  
E:[greg@gislandsservices.com](mailto:greg@gislandsservices.com)

[www.gislandsservices.com](http://www.gislandsservices.com)



**DIXIE BULLOCK**  
DISTRICT MANAGER

**WILMA HATTER**  
SERVICE REPRESENTATIVE  
[HATTERW@SOSSTAFFING.COM](mailto:HATTERW@SOSSTAFFING.COM)

390 East Moana Ln., Ste. 2  
RENO, NV 89502  
T. 775.331.5227 F. 775.323.7772  
[WWW.SOSSTAFFING.COM](http://WWW.SOSSTAFFING.COM)

*A Division of SOS Staffing Services, Inc.*

**Big Sky Geophysics**

Clark Jorgensen, M.Sc.  
Geophysicist

*Field Work  
Processing  
Interpretations*

P.O. Box 353  
Bozeman, MT 59771  
USA

Phone: (406) 587-6330  
Fax: (406) 587-6394  
Mobile: (406) 580-9718  
[clark@bigskygeo.com](mailto:clark@bigskygeo.com)

**For more details, my background, and case studies,  
visit my webpage at [www.bigskygeo.com](http://www.bigskygeo.com)**



**WESTERN RECON**  
and  
**Mineral Exploration Inc.**

**Claim Staking / Soil Sampling / Grids  
Experienced / Dependable/ Trimble GPS**  
Gary Castagne 775-250-4879  
John Fernandez 775-815-2587

[www.westernrecon.com](http://www.westernrecon.com)

**Jo Beth Allen  
Professional Graphics**

CAD Drafting/Digitizing/Scanning  
High Resolution Presentation Graphics  
Plotting/Printing  
Geologist

1055 Joshua Drive  
Reno, Nevada 89509

Phone: 775-324-7960  
Fax: 775-324-7583

[jobeth@yellowsb.net](mailto:jobeth@yellowsb.net)

# GEOLOGICAL SOCIETY OF NEVADA



gsn@gsnv.org • www.gsnv.org  
Telephone (775) 323-3500 FAX (775) 323-3599  
Post Office Box 13375  
Reno NV 89507  
USA

NON PROFIT  
ORGANIZATION  
U.S. POSTAGE  
PAID  
RENO, NV  
PERMIT NO. 931



## PROFESSIONAL STAFFING FOR THE MINERALS INDUSTRY

**ENGINEERS      GEOLOGISTS      LABORERS      CLERICAL STAFF      TECHNICIANS**  
**EQUIPMENT OPERATORS      MANAGERIAL STAFFING      EXECUTIVE RECRUITMENT**

AS THE ESTABLISHED LEADER IN PROFESSIONAL PERSONNEL SERVICES TO THE MINING AND MINERALS INDUSTRY, GEOTEMPS STANDS WITH THE INDUSTRY AT PUBLIC HEARINGS, IN GOVERNMENT LOBBY EFFORTS, FOR WRITE-IN CAMPAIGNS, WITH BUSINESS DONATIONS, AND WITH INDUSTRY ASSOCIATIONS.

**RENO**  
775-746-7146  
970 CAUGHLIN XING  
SUITE 102, 89509  
FAX: 775-746-7156

**ELKO**  
775-738-4707  
557 WEST SILVER ST.,  
SUITE 201A, 89801  
FAX: 775-738-0409

**ELY**  
775-289-6448  
725 AVENUE K,  
SUITE B, 89301  
FAX: 775-289-6472

**TUCSON**  
520-292-1000  
4760 NORTH ORACLE RD.,  
SUITE 200, 85705  
FAX: 520-292-9100