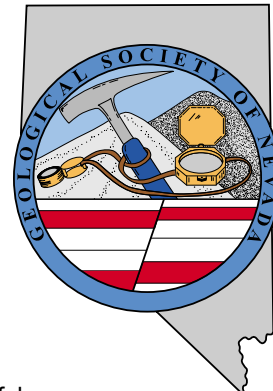


GSN NEWSLETTER



March 2006, Vol. 21, No. 3

PRESIDENT

Dieter Krewedl
Krewedl Mineral Exploration
dkrewedl@usamedia.tv

VICE PRESIDENT

Ellie Davie Leavitt
Consultant
zoracdavie@aol.com

SECRETARY

Leslie Olmstead
Agnico-Eagle (USA) Limited
lolmstead@agnico-eagleusa.com

TREASURER

Camille Prenn
Mine Development Associates
cami@mda.com

MEMBERSHIP CHAIR

Greg McN. French
Consulting Geologist
GMcNFrench@aol.com

PUBLICATION CO-CHAIRS

Elizabeth A. Zbinden
Round Mountain Gold Corp.
E_Zbinden@geology.reno.nv.us

Ruth Carraher

Gold Summit Corp.
racarraher@goldsummitcorp.com

OFFICE MANAGER

Laura Ruud
gsn@mines.unr.edu

CALENDAR OF GSN EVENTS

- March 9 Thursday** (NOTE CHANGE) WINNEMUCCA CHAPTER MEETING. Speaker: Paul Klipfel, Mineral Resource Services Inc. Title: "Carlin and Sediment Hosted Vein Deposits – Different Products from a Common Origin?". The Martin Hotel, W Railroad and Melarkey Streets. Drinks & social at 6:30 pm, presentation at 7:00 pm. SPONSORED BY GEOTEMPS. Contact Kim Craig, Chapter President, for more info, 775/529-5001 x1340, kim_craig@Placerdome.com.
- March 16 Thursday** ELKO CHAPTER MEETING. Speaker: Alan Branham, Midway Gold Corporation. Title: "Coarse Gold and Diatreme Volcanic Vents at the Recent Spring Valley Discoveries Pershing County, Nevada". Western Folklife Center, Elko, NV. Social hour begins at 6:00 pm, talk at 7:00 pm. Contact: John Watson, Chapter President, for more info: 775/738-2062, jwatson@barrick.com.
- March 17 Friday** GSN MEMBERSHIP MEETING. Speaker: Bill Neal, Midway Gold Corporation. Title: "Coarse Gold and Diatreme Volcanic Vents at the Recent Spring Valley Discoveries Pershing County, Nevada". Reno Elks Lodge, 597 Kumle Ln, Reno, NV. Drinks at 6 pm, dinner at 7 pm, talk at 8 pm. Contact Laura Ruud for reservations, 775/323-3500, gsn@mines.unr.edu.
- March 30 Thursday** SOUTHERN NEVADA CHAPTER MEETING. Speaker: Adam Simon, UNLV Assistant Professor of Geology. Topic: TBA. Room 102, Lily Fong Geoscience Building, UNLV, Las Vegas, NV. Social at 6:00 pm, business meeting at 6:30 pm. Presentation at 6:45 pm. Contact Robyn A. Howley, Chapter President, 702/895-5054, robynhowley@yahoo.com for more information.
- April 21 Friday** GSN MEMBERSHIP MEETING. Speaker: William Stanley, Vice President, Exploration for Atna Resources Inc. "Recent Developments at Atna's Pinson Underground Project, Humboldt County, Nevada".

GSN Newsletter is published monthly except June and July

Geological Society of Nevada, PO Box 13375, Reno, NV 89507 USA, 775/323-3500, www.gsnv.org

Office location: Laxalt Mineral Research Center, Rm 266, UNR. Hours: Mon thru Fri, 1-4 pm

FROM THE PRESIDENT

Dieter Krewedl, *GSN President 2004-2006*

During March, the **2005 GSN Symposium Proceedings** will be distributed to those who attended the conference. The two volume set contains 91 papers totaling 1,368 pages. In addition, a CD containing the entire proceedings as linked pdf files will be affixed to an inside cover on one of the volumes. This two volume set contains excellent papers on the regional geology of the Great Basin plus exploration and new discoveries in Nevada and throughout

continued on page 2

MARCH MEETING SPONSOR



CGS, inc

www.cgsmule.com

1335 Greg St. #103 Sparks, NV 89431

Tel: (775) 358-0923 or (800) CGS-MULE

COME SEE US AT OUR OPEN HOUSE

Date: March 17, 2006

Time: 4:30 pm - 8:00 pm

Location:

RENO ELKS LODGE



News and Announcements

FROM THE PRESIDENT *continued from page 1*

the world. The high quality of the proceeding volumes will be a fitting testament of the very successful 2005 GSN Symposium. Additional copies of the two volume set can be purchased for \$155.

Attendance at the **Prospectors and Developers Association Convention (PDAC)** in Toronto from March 5 to 8 is expected to be huge due to the high commodity prices. Exploration interest in Nevada remains high amongst the Canadian mining sector as evidenced by the large number of Canadian juniors working within our State. The **GSN** will be at the convention in **booth #833** in order to promote exploration within Nevada and the sale of our publications such as the 2005 Symposium Proceedings. Ellie Leavitt and Elizabeth Zbinden will be there organizing everything for the GSN. Please stop by the booth and say Hi. We want Nevada to be well represented at this convention.

The **GSN Board of Directors**, which is composed of members from throughout Nevada, had a very successful quarterly meeting during February. A number of issues affecting the entire Society were discussed including a more equitable dues structure, use of the proceeds from the 2005 Symposium, developing a five year financial plan, and better coordination between the GSN and its three chapters. Announcements of the Board's recommendations will be made once they are reviewed and approved by the GSN Executive Committee.

Many thanks to Eric Saderholm for his presentation on the Phoenix deposit during the February GSN membership meeting. Newmont has made a major investment in Nevada by building the Phoenix mine and mill. Significant gold production from Phoenix will commence this year, which will go a long way towards keeping Nevada as the third largest gold producer in the world.

The March 17 GSN membership meeting will have Bill Neal as the guest speaker talking on "Coarse Gold at Midway Gold's Spring Valley Deposit, Pershing County, Nevada". Spring Valley appears to be one of the most significant new discoveries in Nevada and it should be an interesting talk. We wish to thank **CGS, Inc.** for hosting the social hour during the March meeting. I hope you will be able to attend the GSN meeting and also visit our booth in Toronto, if you are attending the PDAC.

**VISIT THE GSN WEBSITE AT:
www.gsnv.org**

LET'S HAVE ANOTHER SKI DAY — MARCH 19TH

We had so much fun at the GSN Ski Day last year that we have decided to do it again!

The 2nd Annual Geologist Ski Day will be March 19, 2006 at the Mt. Rose Ski Area. We will meet at 8:30 am in the upper parking lot of Mt. Rose (same place as last year) and try to head up the lift together. Please bring a side dish or dessert to share. We'll supply the burgers, drinks, and grills. Please bring your own chairs and whatever else you think might make it a better party! We will be eating lunch from 11:30 am to 1:00 pm.

Last year we were unable to get the group rate for 20 people because most of the skiers already had their own passes, but we can still give it a try. Please RSVP to Laura Ruud at the GSN office as soon as possible, 775/323-3500 or gsn@mines.unr.edu. If you have questions about logistics, please contact Eric Ruud at 775/626-7474 or eric.ruud@geobrugg.com.

It should be a great time!



*Thank you to our
generous donors*

Student Dinner Fund

Alan Branham
Del Flint

Bob Horton
Steve Lappin

Thanks to Inspectorate for hosting the February meeting.

GSN March 17, 2006 Membership Meeting

Date: Friday, March 17, 2006

Time: Social-6:00, Dinner-7:00, Meeting-8:00

Reservations: 775/323-3500; fax 323-3599,
e-mail gsn@mines.unr.edu

Deadline: Reserve by 11 am Thursday, March 16th

Location: Elks Lodge, 597 Kumle Lane, Reno, NV

Directions: Across (W) from the Reno-Sparks Convention Center (S Virginia St), behind the Les Schwab Tire Center

Speaker/topic: Bill Neal, Midway Gold Corp.
See abstract below.

COARSE GOLD AND DIATREME VOLCANIC VENTS AT THE RECENT SPRING VALLEY DISCOVERIES PERSHING COUNTY, NEVADA

Bill Neal and Alan Branham, Midway Gold Corporation, Helena, Montana

The Spring Valley project is located in the Humboldt Range, 20 miles northeast of Lovelock, Nevada and 3 miles north of the Coeur Rochester mine. Historic placers in the gulch draining Spring Valley were some of the most productive in Nevada, with estimated production of over 100,000 ounces. Drilling by Midway Gold and previous operators has identified a gold deposit beneath 50 to 300 feet of alluvium.

The principle host is the basal portion of the Rochester rhyolite, a highly variable package of intercalated lithic tuff, welded tuff, flow banded rhyolite, and spherulitic rhyolite that is part of the Permo-Triassic island arc volcanics of the Koipato Group. Drilling identified the NE trending margin of a large diatreme with secondary breccia pipes near this margin. The diatreme and secondary breccias consist of large rounded to sub-angular fragments of local and exotic volcanics and sedimentary rocks in a rock flour matrix. A distinctive welded tuff and overlying tuffaceous siltstone appear to have been erupted from the secondary pipes. Large blocks of welded tuff have dropped over 200 feet into the secondary breccia pipes. Porphyry sills and dikes were intruded along the margin of the diatreme.

Quartz vein related gold mineralization has been identified along strike for over 2500 feet and to depths of over 1000 feet. Higher temperature quartz-tourmaline veins and stockwork occur within strong quartz-sericite alteration zones. They cut earlier disseminated tourmaline alteration. Gold occurs in: 1) a hydrothermal breccia in the Pond Zone, 2) in stockwork veins cutting porphyry along the diatreme margin in the Sill Zone, 3) in a stockwork veins and breccias cutting altered rhyolite to latite porphyry in the Porphyry zone.

Coarse gold, up to 3 mm across, has been observed in RC cuttings. Midway Gold has developed a simple procedure to identify and quantify the location and grade of the coarse gold areas with a modified sluice attached to a standard reverse circulation drill. This allows analysis of a gravity concentrate from a much larger sample than normally collected in RC drilling.



THANKS AGAIN INSPECTORATE AMERICA!

We apologize to the crew at Inspectorate America for not thanking you all for your generous sponsorship at the Feb 17, 2006 meeting in Reno last month. It was an oversight that we regret. A big round of applause goes out to Inspectorate America, Vic King, John Thiel, Carmen Arbizo, Dave Williams and Doug Hensen! THANK YOU!!!

ACTIVITY UPDATE

Mike Brady, January 2006, www.activityupdate.com

NEVADA

Nevada Pacific Gold Ltd. announced that Robert McEwen purchased an 18.2% interest in the company for \$4,310,300.

M.J.: December 16

Coral Gold Resources Ltd. announced that Robert McEwen purchased a 20% interest in the company for \$3,232,750.

M.J.: December 16

Midway Gold Corp. announced that recent drill results at the Midway/Dauntless Project include 220-260 feet @ 0.824 opt Au (MW411); 235-330 feet @ 0.023 opt Au (MW412) and 250-270 feet @ 0.010 opt Au (MW413). *Press Release:* January 17

X-Cal Resources Ltd. announced that it acquired an option to earn a 49% interest in the Reese River Pediment Property from Placer Dome Inc. for \$200,000 in exploration expenditures over 1 year. *M.J.:* December 22

Queenstake Resources Ltd. announced that recent drill results at the Starvation Canyon Project include 500-520 feet @ 0.296 opt Au (TJ-210); 600-630 feet @ 0.380 opt Au (TJ212); 630-645 feet @ 0.210 opt Au (TJ214); 660-720 feet @ 0.357 opt Au (TJ216C); 430-495 feet @ 0.292 opt Au (TJ232C) and 400-445 feet @ 0.413 opt Au (TJ242C). (resource = 617,800 tons @ 0.294 opt Au indicated) *Press Release:* January 18

Kinross Gold Corp. announced that it acquired an option to earn a 60% interest in the Jenny Hill Property from Lincoln Gold Corp. for \$3,000,000 in exploration expenditures over 5 years.

N.M.: December 23

Rio Fortuna Exploration Corp. announced that it changed its name to Fortune River Resource Corp.

Press Release: December 21

Staccato Gold Resources Ltd. announced that recent drill results at the South Eureka/Lookout Project include 129.5-137.1 meters @ 0.197 opt Au (BH05-02); 58.8-59.7 meters @ 2.259 opt Au (BH05-03) and 115.8-140.2 meters @ 0.215 opt Au (BH05-03). (resource = 13,200,000 tons @ 0.020 opt Au measured+indicated) *N.M.:* December 23

Quaterra Resources Inc. announced that it acquired an option to earn a 100% interest in the MacArthur Property from private interests for \$1,785,000 cash over 2 years. (resource = 29,000,000 tons @ 0.28% Cu inferred) *P.D.:* November 2005

Atna Resources Ltd.(70%) announced that recent underground drill results at the Pinson/Ogee Project include 32-41 feet @ 0.486 opt Au (UGOG-001); 25-32 feet @ 0.722 opt Au (UGOG-002); 35.5-40.4 feet @ 0.646 opt Au (UGOG-003); 32-37 feet @ 0.617 opt Au (UGOG-005); 12.5-18.4 feet @ 0.617 opt Au (UGOG-007); 8.5-15 feet @ 0.292 opt Au (UGOG-009); 50-65.9 feet @ 1.226 opt Au (UGOG-010); 156.5-215 feet @ 1.691 opt Au (UGOG-101) and 318-330 feet @ 0.270 opt Au (UGOG-011). (resource = 1,760,000 tons @ 0.302 opt Au measured+indicated) *Press Release:* January 11

Bravo Venture Group Inc. announced that the first drill hole at the South Lone Mountain Project successfully intersected bedrock

168 meters east of the previously completed oil well that revealed some gold at the alluvium/bedrock contact. Gold was found in the bedrock, Roberts Mountains Formation in values up to 31 ppb Au but the alluvium/bedrock contact contained no mineralized clasts.

Press Release: January 11

Gateway Gold Corp. announced that recent drill results at the Big Springs Project include 128-203 feet @ 0.053 opt Au (GW05-226); 93-163 feet @ 0.049 opt Au (GW05-230); 73-203 feet @ 0.084 opt Au (GW05-231); 79-214 feet @ 0.103 opt Au (GW05-234); 0-48 feet @ 0.057 opt Au (GW05-236); 113-143 feet @ 0.125 opt Au (GW05-237); 98-123 feet @ 0.138 opt Au (GW05-238) and 93-243 feet @ 0.040 opt Au (GW05-245). (resource = 904,200 tons @ 0.288 opt Au measured+indicated)

Press Release: January 12

Metallic Ventures Gold Inc. announced that recent drill results at the Gemfield Project include 310-330 feet @ 0.012 opt Au (GEM-386); 275-790 feet @ 0.068 opt Au (GEM-387); 425-600 feet @ 0.045 opt Au (GEM-388); 175-340 feet @ 0.016 opt Au (GEM-391); 245-430 feet @ 0.012 opt Au (GEM-392); 180-415 feet @ 0.010 opt Au (GEM-393); 175-220 feet @ 0.020 opt Au (GEM-395) and 230-355 feet @ 0.016 opt Au (GEM-396). (resource = 9,500,000 tons @ 0.040 opt Au)

Press Release: January 5

White Knight Resources Ltd. announced that recent drill results at the Slaven Canyon Project include 12.2-15.2 meters @ 0.034 opt Au (SL-25) and 25.9-41.2 meters @ 0.092 opt Au (SL-25). (resource = 1,473,000 tons @ 0.037 opt Au)

Press Release: January 16

Royal Gold Inc. announced that it purchased a 3% NSR on the Robinson Mine and a sliding scale NSR capped at 1.5% on the Mulatos, Sonora project from Kennecott Exploration Inc. for \$25,000,000. (reserve @ Robinson = 142,340,000 tons @ 0.69% Cu, 0.008 opt Au proven+probable) *N.M.:* January 6

Grandcru Resources Corp. announced that recent drill results at the Danny Boy/Beard Hill Project include 61-121 feet @ 0.012 opt Au (DB05-1) and 78-93 feet @ 0.010 opt Au (DB05-5).

Press Release: January 4

Quadra Mining Ltd. announced that reserves at the Robinson Mine aggregate 160,067,600 tons @ 0.69% Cu, 0.007 opt Au proven+probable. (was 115,060,000 tons @ 0.72% Cu, 0.008 opt Au proven+probable) *Press Release:* January 20

Centerra Gold Inc.(62%) announced that based on recent drill results at the REN Project, resources aggregate 3,028,300 tons @ 0.398 opt Au indicated. (was 2,090,000 tons @ 0.384 opt Au indicated) *Press Release:* January 23

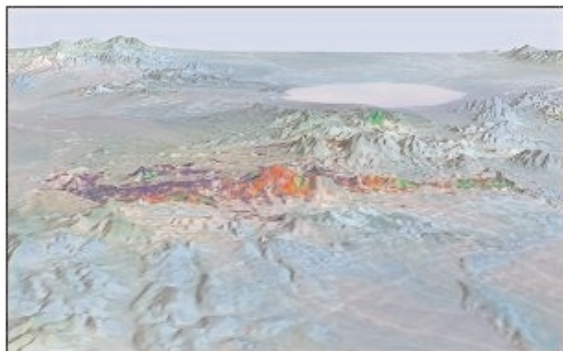
Tone Resources Ltd. announced that Robert McEwen would purchase 2,500,000 shares (14.7%) in the company for \$434,780.

M.J.: January 6

Newmont Mining Corp. announced that it received approval to construct a 200-MW coal fired, power plant on the TS Ranch at a capital cost of \$450,000,000.

M.J.: January 13

EXPLORATION with ASTER



Alteration Image, Goldfield, Nevada

- **CUSTOM CORRECTED DATA**
- **ALTERATION IMAGERY**
- **EXTENSIVE GLOBAL ARCHIVES**

WWW.ASTERIMAGES.COM
 email: pusa@rmi.net
 dwc@overhill-imaging.com

RENT A PIMA!!



IDENTIFY and MAP ALTERATION
 MINERALS IN THE FIELD and CORE
 CONTACT US FOR Rentals and Services

Spectral International, Inc
 303 403 8383 pusa@rmi.net
 www.specmin.com

MINERAL EXPLORATION SERVICES

**SOIL SAMPLING
 CLAIMSTAKING
 PROPERTY EVALUATION
 MINE HAZARD FENCING**

5655 Riggins Ct., #15, Reno, NV 89502
 Tel: (775) 954-1082 Fax: (775) 829-6882
 email: day@mineralexploration.com

Fire Assay
 ICP - OES
 ICP - MS
 AAS
 Custom Preparation
 Bullion Analyses
 BLEG

Corporate Office
 1500 Glendale Avenue
 Sparks, NV U.S.A. 89431-5902
 Telephone (775) 356-0606
 Fax (775) 356-1413

Chris Ioannakis, Managing Director,
 Analytical Services



**American
 Assay &
 Environmental
 Laboratories**

Elko Office
 2320 Last Chance Road
 Elko, NV U.S.A. 89801-4852
 Telephone/Fax (775) 738-9100

E-mail: AALADMIN@aallabs.net
 Website: www.aallabs.com

MINING CLAIM FILINGS INCREASE 14% IN 2005

Alan R. Coyner, Nevada Division of Minerals

Mining claim filings in Nevada increased 14.4% in 2005 over 2004 according to the Nevada Division of Minerals. Nevada's county recorders registered 166,952 mining claim filings in 2005. The number of mining claim filings is comparable to, but does not duplicate, the number of active claims reported annually by the BLM. The 2005 increase continues the strong upward trend of 2004, when claim filings increased 24.9% over 2003. Eureka County had the most filings with 34,476, followed by Humboldt with 23,111, and then Elko with 22,480. The county with the highest percentage increase in 2005 was Humboldt followed by White Pine.

For further information concerning the mining claim filings visit the Division's website at

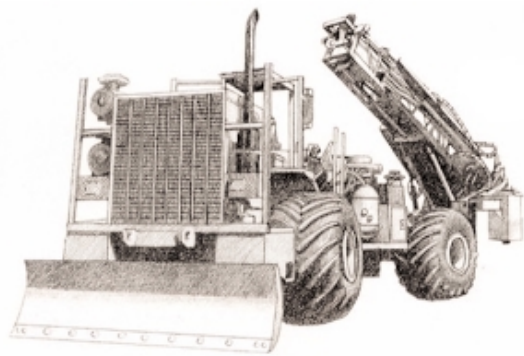
www.minerals.state.nv.us

<<http://www.minerals.state.nv.us>>

or call Doug Driesner at 775/684-7046.



Diversified Drilling LLC



*Providing drilling services to the mining/
metals industry since 1980*

3650 Grant Creek Road
Missoula, Montana 59808
(406) 542-1010 Fax (406) 542-5065

Jo Beth Allen
Professional Graphics

CAD Drafting/Digitizing/Scanning
High Resolution Presentation Graphics
Plotting/Printing
Geologist

1055 Joshua Drive Phone: 775-324-7960
Reno, Nevada 89509 Fax: 775-324-7583
jobeth@yellowsub.net



Enviroscientists, Inc.

4600 Kietzke Lane, Suite C 129, Reno, Nevada 89502
Phone: (775) 826-8822 Fax: (775) 826-8857

**Notices, Plans of Operations,
Cost Estimates, TRI, Biological Surveys,
Air Quality Permits & Audits**

Info@enviroincus.com www.enviroincus.com

ALS Chemex



We are a global analytical testing company serving the mining and mineral exploration industry in Nevada and around the world.

We specialise in:

- Assaying and geochemical analysis for mining and mineral exploration projects
- On-site contract mine laboratory management
- Environmental monitoring of mining operations
- Acid mine drainage studies

Contact our laboratories in Nevada to find out how we can help you with all of your project's analytical needs.

RENO, NV
Phone: 775 356 5395

ELKO, NV
Phone: 775 738 2054

WINNEMUCCA, NV
Phone: 775 625 4192

www.alschemex.com

*Right solutions....
....Right partner*



**Claim Staking / Soil Sampling / Rock Chip
Experienced / Dependable / simply, "the best"**

Contacts:

Gary Castagne 775-250-4879

John Fernandez 775-815-2587

www.westernrecon.com

**GSN Newsletter
Monthly Advertising Rates**

Business card size (3 1/2 x 2")	\$ 50.00
Quarter page (3 1/2 x 4 3/4")	150.00
Half page (4 3/4 x 7 1/2")	300.00
Classified ads \$10/line (up to business card size)	

For an advertising form, call the GSN office at 775/323-3500 or fax 323-3599. Digital or text ads must be received by the 20th of the month to appear in the following month's newsletter.

sample Bags

HUGE INVENTORY  LOW, LOW PRICES

NEW ADDRESS!
LEGEND, INC.

988 Packer Way
Sparks, NV 89431

Off Glendale east of McCarran
phone: (775) 786-3003
fax: 786-3613
www.Lmine.com
email: info@Lmine.com

WE CAN HELP!

- Environmental and exploration support services
- Celebrating 40 years of service to the mining industry
- Experience in Mexico / Canada / Alaska



NORTH AMERICAN EXPLORATION INC.
NORTH AMERICAN MINE SERVICES INC.
GEOLOGY | GEOPHYSICS | GEOCHEMISTRY
HYDROLOGY | ENVIRONMENTAL SERVICES

447 North 300 West, Ste. 3 • Kaysville, Utah 84037 • Phone (801) 546-6453 Fax (801) 544-4554
nae@nae-xploration.com



Carlin Trend Mining Supplies & Service

www.carlintrend.com

We are now able to conduct Archeological Services.

Please Contact
Jill Jensen

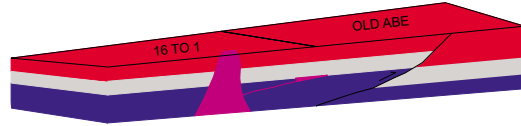
Archeological Survey,
Portable XRF Surveys or Rental,
Geological Consulting, Claim Staking,
Soil Sampling, AutoCad & GIS
Geology & Drafting Supplies

369 5th St.,
Elko, NV 89801

Phone 775-778-0668
Fax 775-778-0687

G.I.S. Land Services

Greg Ekins M.S. R.L.P. #32306 President
Mineral Landman - Computer Draftsman
"From Courthouse Records to Final Map"



Surface Title
Mineral Title

AutoCad - ArcView - Mapinfo
Geologic, GeoChem and Land Status Maps
www.gislandservices.com

E: greg@gislandservices.com
P: 775-746-8803 F: 775-746-8802

6635 Broadridge Ct.
Reno. NV 89523



DIXIE BULLOCK
DISTRICT MANAGER

WILMA HATTER
SERVICE REPRESENTATIVE
HATTERW@SOSSTAFFING.COM

412 NORTH MCCARRAN BLVD.
SPARKS, NV 89431
T. 775.331.5227 F. 775.323.7772
WWW.SOSSTAFFING.COM

A Division of SOS Staffing Services, Inc.

Big Sky Geophysics

Clark Jorgensen, M.Sc.
Geophysicist

*Field Work
Processing
Interpretations*

P.O. Box 353
Bozeman, MT 59771
USA

Phone: (406) 587-6330
Fax: (406) 587-6394
Mobile: (406) 580-9718
clark@bigskygeo.com

**For more details, my background, and case studies,
visit my webpage at www.bigskygeo.com**

Petrographic and Ore Microscopy Services

for applications in the following areas:

- Base and Precious Metals
- Industrial Minerals
- Mineral Exploration
- Geological Mapping
- Process Mineralogy
- Forensic Geology



P.O. Box 10080
American Canyon, CA 94503
Phone: 707-553-2772
E-Mail: sfmicro@earthlink.net

Schurer & Fuchs

WINNEMUCCA CHAPTER MARCH 9TH (Thursday) MEETING

CARLIN AND SEDIMENT HOSTED VEIN DEPOSITS – DIFFERENT PRODUCTS FROM A COMMON ORIGIN?

Paul Klipfel

ABSTRACT

This talk examines the similarities and differences between Sediment Hosted Vein (SHV) and Carlin-type deposits, and presents a case for understanding these two styles of mineralization by virtue of their common characteristics.

Sediment Hosted Vein deposits constitute a family of gold-bearing vein deposits that occur worldwide, but are found primarily in Asia. This group includes some of the world's largest gold deposits such as Muruntau, Sukhoy Log, Baleyskoe, Maysky, Kumtor among others in Asia, Bendigo and Ballarat and many other smaller gold vein deposits of the Victorian gold fields in Victoria, Australia. Other smaller deposit examples occur in Nova Scotia, Canada, Nome, Alaska and in pre-Cordillera rocks of South America. These deposits are united by common characteristics, which include Late Proterozoic to early Paleozoic passive-margin shale-siltstone host rocks, extended crust as basement to the host rocks, multiple episodes of deformation of which fold-thrust tectonism is the most significant, Au±As, Sb, W metal suite, neutral, low to moderate salinity hydrothermal fluid chemistry, minimal to moderate grade metamorphism, active granitic magmatism in the crust at or near the time of mineralization, and occurrence within a field of multiple deposits commonly in association with large placer fields.

Remarkably, this list of characteristics is virtually identical to the major characteristics that define Carlin-type deposits. There are, however, a few significant differences that set Carlin-type deposits apart from SHV deposits. These include the absolute and relative timing of mineralization, carbonate content of host rocks, and the role of decalcification. If these distinctions are considered to be local variations on a grander theme, Carlin- and SHV-type deposits share some important characteristics which may have contributed to their genesis. Namely, the passive margin sedimentary sequence and its underlying extended crust appear to be most important. Under compressional tectonism, faults in extended basement are reactivated and contribute to the fold-fault patterning created in the overlying sedimentary rocks and also likely provide significant pathways for deep-sourced hydrothermal fluids and magma.

Understanding the importance of these regional to local scale characteristics and the fact that they are common to some of the greatest gold deposits in the world provides a unique set of exploration criteria for explorationists. The application of these criteria in the search for both types of deposits may be important.



THE FOLLOWING PUBLICATIONS ARE NEW AT NBMG

SP19 - Geologic and natural history tours in the Reno area, expanded edition by Joseph V. Tingley, Kris Ann Pizarro, Christopher Ross, Becky Weimer Purkey, and Larry J. Garside, publication design by Jack P. Hursh, 184 pages, **\$24.95**

This wonderful new book will be of great interest to earth scientists and anyone who wishes to learn more about the geology, natural history and cultural history of the greater Reno area. For more information go to:

<http://www.nbmgs.unr.edu/sales/pbsdtls.php?sku=sp19>

OF06-1 - Loss-estimation modeling of earthquake scenarios for each county in Nevada using HAZUS-MH by Ronald H. Hess and Craig M. dePolo (2006) 516 pages, includes some color plates, **\$47.00** for paper copy

In preparing this report, the Nevada Bureau of Mines and Geology used the Federal Emergency Management Agency's loss-estimation model, HAZUS-MH, to estimate what the effects would be of potential earthquakes near each of the county seats in Nevada (similar to ones we know have occurred in the geologic past). The report also includes some of the latest information from the U.S. Geological Survey regarding their best estimates of the probability of various earthquakes occurring within the next fifty years near each of the county seats. OF06-1 is available free on the Web at:

<http://www.nbmgs.unr.edu/dox/of061/of061.htm>

E-16 - Earthquakes in Nevada and how to survive them by Craig dePolo, Alan Ramelli, and Diane dePolo (Fifth edition, **February 2006**), single copies are available for free in our office or free with an order, quantities are free but must pay postage. This new edition of E-16 is available free at:

<http://www.nbmgs.unr.edu/dox/e16.pdf>

New journal article:

The following article on alluvial fan flood hazard mapping in Laughlin, Nevada was recently published in the Journal of the American Water Resources Association (December 2005, pages 1431-1447):

"Using geology to improve flood hazard management on alluvial fans - an example from Laughlin, Nevada" by P. Kyle House can be viewed at:

<http://www.awra.org/jawra/articles.html>

Kyle House is a research geologist at NBMG. You can read more about Kyle's research at:

<http://www.nbmgs.unr.edu/staff/house/kyle.htm>

continued on page 10

JUDGES REGISTRATION FORM, 2006 REGIONAL SCIENCE FAIR

Melody Hefner, *Volunteer Judge Coordinator*

Judging for the Regional Science Fair will occur on Thursday, March 16th at the Lawlor Events Center. As in the past, we will meet for a light supper at 5 pm. Judging will begin promptly at 6 pm — no, I really mean it!

Judging will go until done — for the lower grades (K-6), it is usually done by 9 pm. We will be judging grades K-12 for the science fair and also judging K-12 inventions again this year.

Below is the form to fill in with all your particulars.

Please pass this form on to all your friends and colleagues who may be interested in judging the science fair — many hands will lighten the load! Thanks in advance for all your help — you do make a difference!

Melody Hefner

2006 Western Nevada Regional Science & Engineering Fair Judge Registration Form

Name: _____

Telephone: _____

email: _____

Scientific Expertise (note: we ask this so we don't put 12 geologists together in the same group, not because we think you have to prove you are smart enough to judge the science fair!) Biology, Chemistry, Computers, Earth Science, Education Electronics, Engineering, Geography, Hydrology, Mathematics, Medicine, Physics, Social Science, other:

Willing to be a team leader? (Yes/No): _____

Grade Preference (if any): _____

Grade Exemption (if any-i.e. child in that grade, teach that grade, know a child in that grade, etc.): _____

I prefer judging the science fair (Yes/No): _____

I'll be an Inventions judge (Yes/No): _____

I'll do either judging task (Yes/No): _____

Do you need childcare during the judging?
(Yes/No): _____

For how many children: _____

Children's' ages: _____

Please reply by email or fax to Melody Hefner

Thank you!

Melody Hefner

Volunteer Judge Coordinator

2006 Regional Science Fair

Phone 775/425-2808, Fax 775/425-6128

email mlhefner@sbcglobal.net

GSN MEMBERS' PERSONAL NOTES & NEWS

Career Related Moves

► Paul Hohbach will be in Irian Jaya, Indonesia to perform geological consulting work for Call & Nicholas Inc of Tucson, Arizona through April. The work will take place in the underground development at PT Freeport Indonesia's Grasberg Mine, the world's largest copper mine.

► Carlin Trend Mining Services has added Jill Jensen to their staff as director of their new Archaeology Division. Ms. Jensen received her Bachelor's of Science in Anthropology from Utah State University in 2000, is currently completing her Master's of Arts in Anthropology at Sacramento State University, and brings over 10 years archaeological experience to the Archaeology Division. Visit the Archaeology Division online at www.carlintrend.com or drop by and say hello at 369 5th St. Elko, NV.

Births

► GSN Members April Barber and Tom Callicrate are celebrating the birth of their new baby girl, Rose Mary Barber-Callicrate. She was born on Feb 4, 2006, weighing in at 7 lbs 10 oz and 20" long. After a rough start, she is doing much better now and they hope to take her home in a few weeks.

Members are encouraged to keep us informed about their own career related moves and awards, and deaths of GSN colleagues. Your information needs to be received by Laura at gsn@mines.unr.edu by the 21st of each month.

New mine directory:

"The Directory of Nevada Mines Operations: January - December 2004", by Mine Safety & Training Section of the Department of Business & Industry is now available *free on the Web* at:

<http://dirweb.state.nv.us/MSTS/2004minedir.pdf>

or you may order a paper copy by calling 775/684-7085 in Carson City or e-mailing them at <mines@dbi.state.nv.us>.

You may **place an order** or check for shipping charges through our shopping cart at:

<http://www.nbmng.unr.edu/sales.htm>
or by calling 775/784-6691 x2.

ELKO CHAPTER MARCH 16TH MEETING

Coarse Gold and Diatreme Volcanic Vents at the Recent Spring Valley Discoveries Pershing County, Nevada

Bill Neal and Alan Branham
Midway Gold Corporation, Helena, Montana

ABSTRACT

See page 3, Reno abstract.

UPCOMING EVENTS

March 2, 2006 – Nevada Petroleum Society – Donald Sweetkind, USGS, Lakewood, CO – "New Geologic, Geophysical and Hydrologic Studies in White Pine County, NV: Implications for Ground-Water Resources and Petroleum Potential". Austin's Restaurant, 7671 South Virginia Street in Reno, NV. Cocktails at 6:30 pm. Dinner is served at 7:00. The talk immediately follows dinner, 7:45 or 8:00 pm. Reservations are required; please contact please contact Diane Phillips at trailsend@pyramid.net or 775/267-4663.

March 3, 2006 – American Association of Petroleum Geologists Distinguished Lecture (sponsored by the Nevada Petroleum Society). James Markello, ExxonMobil Upstream Research Company "The Carbonate Analogs through Time Hypothesis: A Systematic and Predictive Look at Phanerozoic Carbonate Reservoirs". 1:30 to 2:30 pm. Room 353, Laxalt Mineral Research building (accessed through the Laxalt Mineral Engineering building on the east side of the quad) University of Nevada, Reno campus. Contact Jerry Walker for more info: Jerry@petrol-geol.reno.nv.us.

March 3, 2006 – MACKAY SEMINARS IN ECONOMIC GEOLOGY – James Webster, American Museum of Natural History – "Magmas, Ores, Volcanoes, and Fluids". 3:00 to 4:00 pm, Room

353, Laxalt Mineral Research building. Contact Jon Price for more info: jprice@unr.edu.

March 5-8, 2006 – PDAC 2006, International Convention, Trade Show & Investors Exchange, Toronto, ON, Canada. Phone: 416/362-1969 or visit www.pdac.ca. **GSN BOOTH #833**.

March 13-16, 2006 – Alaska Miners Association 20th Fairbanks Biennial Conference, Arctic International Mining Symposium, Westmark Fairbanks Hotel & Conference Center, Fairbanks, AK. Phone 907/374-0858 or email: wonderwoman1@gci.net.

March 17, 2006 – MACKAY SEMINARS IN ECONOMIC GEOLOGY – Michael Houseman, World Minerals – "Diatomite Geology and Economics, with Specifics on Deposits Near Fernley, Nevada". 3:00 to 4:00 pm, Room 353, Laxalt Mineral Research building. Contact Jon Price for more info: jprice@unr.edu.

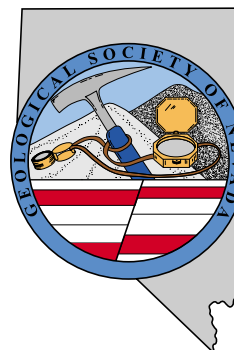
March 19, 2006 – GSN Ski Day, Mt. Rose Ski Area, Nevada. Contact Eric Ruud for more information. 775/626-7474.

March 26-29, 2006 – SME Annual Meeting and Exhibit and 7th ICARD, St. Louis, MO. Visit the Society of Mining & Metallurgical Engineering Website for more information – www.smenet.org.

May 14-17, 2006 – CIM Conference and Exhibition, Vancouver Convention & Exhibition Centre, Vancouver, BC, Canada. For more information, contact Jean-Marc Demers at 514/939-2710 ext. 1314. Email: jmdemers@cim.org, Website: <http://www.cim.org>

June 8-9, 2006 – 21st Annual Mining Expo, Elko, Nevada. For information contact the Elko Convention & Visitors Authority, 700 Moren Wy, Elko, NV. Ph. 775/738-4091, website: <http://www.elkocva.com>.

Join the Geological Society of Nevada



- Our mission is to promote the advancement of the geologic sciences, especially as they relate to Nevada.
- The GSN provides a monthly newsletter, membership directory, and numerous publications about ore deposits in the Great Basin as well as the North and South American Cordillera.
- The GSN has monthly meetings and two field trips annually.
- Every five years the GSN sponsors a highly respected GSN Symposium. The next one will be held in Reno, Nevada in 2010.

For an application form, visit our website at www.gsnv.org or contact the GSN office at 775/323-3500 or gsn@mines.unr.edu

GSN 2005 SYMPOSIUM PROCEEDINGS AND FIELD TRIP GUIDEBOOKS

2005 Symposium Proceedings

		QTY	TOTAL
05-1	2005 Symposium Proceedings, Window to the World, 1,368 p. (262 color), \$155.00 CD included	_____	_____

2005 Symposium Field Trips

05FT01	Geology and Structural Controls of the Precious Metal Deposits of the Walker Lane & South-Central NV, (2005) \$45.00	_____	_____
05FT03	An update on the Northeast NV Eocene Paleogeography, Volcanic Succession, & the Depth of Formation of Sediment-Hosted Gold Deposits of the Northern Carlin Trend, NV, (2005) \$45.00	_____	_____
05FT04	Sediment-Hosted Gold Deposits of the Getchell District, NV, (2005) \$45.00	_____	_____
05FT05	Low Sulfidation Vein Systems in the Northern NV Rift, NV, (2005) \$45.00	_____	_____
05FT06	Geology & Mineralization of Sediment-Hosted Gold Deposits of the Southern Carlin Trend, NV, (2005) \$45.00	_____	_____
05FT07	Sediment-Hosted Gold Deposits of the north-central Eureka-Battle Mountain Trend, NV, (2005) \$45.00	_____	_____
05FT08	Sediment-Hosted Gold Deposits of the Independence Range, NV, (2005) \$45.00	_____	_____
05FT09	Porphyry Deposits of the Great Basin, (2005) \$45.00	_____	_____
05FT10	Geology, Mineralization & Remote Sensing of the Comstock District, NV, (2005) \$45.00	_____	_____

TOTAL PURCHASES _____

See chart below for Shipping & Handling _____

TOTAL US \$ _____

SOLD TO:

Name: _____

Company: _____

Street Address: _____

City: _____ State/Prov: _____

Zip Code: _____ Country: _____

Phn: _____ Fax: _____

Card #: _____

VISA _____ MasterCard _____ Expiration Date: _____

Signature _____

(required for credit card purchases only)

Please make checks payable to **Geological Society of Nevada**. Payment must accompany order (sorry, NO purchase orders).
 Payment should be made in US dollars. Price includes NV sales tax when applicable. Prices do not include international customs duty or taxes.
 This price list supersedes all others & is effective 12/05. Prices are subject to change. Tax ID # 88 0143056. Published in the **USA**.

Shipping & Handling for Purchases Totaling	Continental U.S.	Alaska Hawaii	Canada	Mexico/W. Europe Caribbean/Scandinavia	Australia	Central & S. America	E. Europe, Asia Africa, All Others
\$ 0 - 50	\$ 7.00	\$20.00	\$15.00	\$45.00	\$50.00	\$70.00	Please contact GSN office for current shipping rates
50 - 100	9.00	30.00	25.00	80.00	100.00	150.00	
For each additional \$50 add	4.00	10.00	10.00	20.00	25.00	40.00	

Office use only:

Order rec'd _____ Picked-up _____ Shipped _____ Ck # _____ Visa or MC _____ Pmt rec'd by _____

GEOLOGICAL SOCIETY OF NEVADA



gsn@mines.unr.edu • www.gsnv.org
Telephone (775) 323-3500 FAX (775) 323-3599
Post Office Box 13375
Reno NV 89507
USA

NON PROFIT
ORGANIZATION
U.S. POSTAGE
PAID
RENO, NV
PERMIT NO. 931

**IT IS A TOUGH JOB
BUT SOMEBODY HAS TO
PERMIT IT**

©Enviroscientists

***Specializing in Exploration & Mining Projects
on U.S.F.S., B.L.M., & Private Lands***

Plans of Operations • Notices • Baseline Studies (Biology & Cultural)
Environmental Assessments • Environmental Impact Statements
Permit Mediation & Negotiation

4600 Kietzke Lane, Suite C129
Reno, Nevada 89502
Phone: (775) 826-8822
Fax: (775) 826-8857
www.enviroincus.com



Enviroscientists, Inc.

Environment Resources Management
Striking the BalanceSM