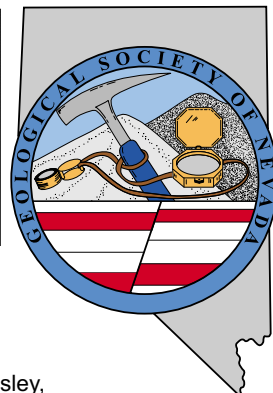


# GSN NEWSLETTER

Geological Society of Nevada, PO Box 13375, Reno, NV 89507 USA, 775/323-3500, www.gsnv.org  
Office location: Laxalt Mineral Research Center, Rm 266, UNR. Hours: Mon thru Fri, 1-4 pm



March 2007, Vol. 22, No. 3

Published monthly except June and July

## PRESIDENT

**Ellie Davie Leavitt**  
Western Energy Development Corp.  
zoracdavie@aol.com

## VICE PRESIDENT

**Gregory Hill**  
Harvest Gold Corp. (US)  
hillgreg@charter.net

## SECRETARY

**Leslie Olmstead**  
Agnico-Eagle (USA) Limited  
l olmstead@agnico-eagle.com

## TREASURER

**Camille Prenn**  
Mine Development Associates  
cami@mda.com

## MEMBERSHIP CO-CHAIRS

**Greg McN. French**  
Consulting Geologist  
GMcNFrench@aol.com

## Opal Adams

Enviroscientists, Inc.  
ofadams@enviroincus.com

## PUBLICATION CO-CHAIRS

**Marilyn Miller**  
Consulting Geologist  
marilyn.miller1@sbcglobal.net

## Debbie Schneider

Schneider and Schneider Assoc  
dschneider41@charter.net

## OFFICE MANAGER

**Laura Ruud**  
gsn@mines.unr.edu

## CALENDAR OF GSN EVENTS

- Mar 14**  
**Wednesday** WINNEMUCCA CHAPTER MEETING. Speaker: Richard Hipsley, Barrick Gold Exploration, Inc. Topic: South Arturo Project. Our generous sponsor will be Small Mines Development (SMD). The Martin Hotel, W. Railroad and Melarkey Streets. Drinks at 6:30 pm, talk at 7 pm. Contact Ivan Johnston, Chapter President, for more info, 775/635-4292, Ivan.Johnston@Newmont.com.
- Mar 15**  
**Thursday** ELKO CHAPTER MEETING. Speaker: Kevin Creel, Barrick Cortez Gold Mine. Topic: Cortez Hills Deposit and Development. Western Folklife Center, 501 Railroad Street, Elko, NV. Drinks at 6:00 pm, talk at 7:00 pm. Contact Richard Reid, Chapter President, at 775/778-3912, Richard.Reid@newmont.com for more information.
- Mar 16**  
**Friday** GSN MEMBERSHIP MEETING. Speaker: Bob Page, V.P. Linear Metals Corporation, Inc., Title: "China – A Look at the Drivers Behind the World's Biggest Zinc Producer". Reno Elks Lodge, 597 Kumle Ln, Reno, NV. Drinks at 6 pm, dinner at 7 pm (\$17), talk at 8 pm. Contact Laura Ruud for reservations, 775/323-3500, gsn@mines.unr.edu.
- Mar 18**  
**Sunday** GSN SKI DAY. Mt. Rose Ski Area, meet at 8:45 am in the upper parking lot. See page 3 for details.
- March, 2007** SO NEVADA CHAPTER MEETING. Date, speaker and topic to be announced. For more information, please contact Bruce Hurley, Chapter President at 702/295-1284, rocks2bwh@aol.com.
- April 12-13**  
**Thursday & Friday** GSN SPRING 2007 FIELD TRIP. "Geology of the Nevada Test Site, Yucca Mountain, and the Searchlight District". In cooperation with GSN's Southern Nevada Chapter. See details and sign-up sheet on page 2 of this newsletter. Contact Laura Ruud at the GSN office, 775/323-3500, gsn@mines.unr.edu. **Registration and payment due by March 16<sup>th</sup>!!**

## FROM THE PRESIDENT

Ellie Davie Leavitt, GSN President 2006-2007

Both last month's talk on the El Dorado project in El Salvador and the upcoming talk on zinc resources in China reflect the growing global experiences of GSN members. The talks address geology and highlight issues pertinent to worldwide exploration for, and development of, natural resources. These talks point out the luxury of doing geology in a vacuum has long since vanished (even when we map Mars). Whether competing for research funds, or exploring for natural resources, too often the related issues require and consume our attention. As reiterated in last month's message, GSN was founded fifty years ago to focus on the exchange of geologic ideas, etc. Presently, the membership is dominated by exploration industry types, but includes members involved in academia, government, and related fields of earth science. Most members have backgrounds in science, and tend to be analytical. Dealing with related issues should be straightforward, but most often confronts geologists with illogical-seeming sequences of events.

## MARCH MEETING SPONSOR



# CGS, inc

[www.cgsmule.com](http://www.cgsmule.com)

1335 Greg St. #103 Sparks, NV 89431

Tel: (775) 358-0923 or (800) CGS-MULE

**COME SEE US AT OUR OPEN HOUSE**

**Date: March 16, 2007**

**Time: 4:30 pm - 8:00 pm**

**Location:**

**RENO ELKS LODGE**

Over the past months, members have expressed concerns over the lack of knowledge of the general public (on a global scale) regarding: the need for natural resources, especially

*continued on page 4*



# News and Announcements

## GSN SPRING 2007 FIELD TRIP

“Geology of the Nevada Test Site, Yucca Mountain, and the Searchlight District”

The GSN 2007 Spring Field Trip will visit the Nevada Test Site, Yucca Mountain, and the Searchlight Mining District in southern Nevada. The NTS visit will provide a geological overview with many interesting stops (see below). The Searchlight tour will focus on interesting geology such as the Quartet mine, zonation in the Searchlight pluton, and contact relationships resulting from detachment faulting.

Flights to Las Vegas should be reserved as soon as possible and are the responsibility of each attendee. If you wish to stay in Las Vegas the evening of April 13 and beyond it is recommended reservations be made without delay.

In addition to this sign-up form, documents required for clearance at the NTS must be received by March 16, 2007. The clearance form will be distributed upon receipt of the sign-up form. Attendees will be required to provide their full name, social security number, birthdate, birthplace, and home address. No cameras, binoculars, camera phones, or cell phones will be allowed at the NTS.

### Wednesday, April 11, 2007

Arrive in Las Vegas  
Dinner on your own  
Overnight Lodging – Terrible’s Hotel and Casino, 4100 Paradise Road, Las Vegas, Nevada

### Thursday, April 12, 2007

Breakfast on your own  
7:00 AM Bus leaves Atomic Testing Museum Parking Lot  
Gate 100 check-in  
Drive from Mercury to Yucca Mountain  
Visit Yucca Mountain Exploratory Studies Facility and Crest  
Drive through Frenchman Flat  
Visit Rainier Mesa Overlook  
Visit Climax Mine  
Visit Sedan Crater  
Drive through Bilby Crater  
Visit Apple-2 House  
Return to Mercury, visit USGS core library  
7:00 PM Arrive at Atomic Testing Museum, Las Vegas  
7:30 PM Dinner  
Overnight Lodging – Terrible’s Hotel and Casino

### Friday, April 13, 2007

Breakfast on your own  
8:00 AM Bus leaves Atomic Testing Museum for Searchlight  
Searchlight district tour  
4:00 PM Arrive at Atomic Testing Museum

Price includes transportation, overnight lodging on nights of April 11 and 12, snacks and drinks, lunches, one dinner, and guidebook.

Reservations are on a **first-come, first-served basis**; attendance is limited to **45 participants**; **only a small number of single occupancy rooms will be available.**

**Payment and clearance forms must be received in GSN office by March 16, 2007 to guarantee reservation.**

**Please complete and submit ASAP:**

Spring 2007 Field Trip Sign Up		
Name	_____	
Daytime Phone	_____	
Fax	_____	
Company	_____	
Address	_____	
_____		
Email	_____	
Person to contact in case of emergency:		
Name	_____	Phone _____
Lodging needed in Las Vegas: Y__ N__		
	Single__	Double __
Roommate (or we will assign) _____		
MEMBER COST:	double room	\$200.00
	single room (Limited Number)	\$275.00
	w/o Las Vegas lodging	\$125.00
*NON-MEMBER COST:	double room	\$235.00
	single room	\$310.00
	w/o Las Vegas lodging	\$160.00
*Non-members are encouraged to become members of the GSN for \$35 annual dues in order to take advantage of the reduced rates.		
Amount included with this form	\$	_____
Paid with Check # _____		
Visa__	MC__	Exp Date _____
Credit Card # _____		
Signature _____		
(as it appears on card)		
<b>Payment must be made by March 16, 2007</b>		
<b>No refunds after March 16, 2007</b>		
Fax: 775/323-3599 or mail to GSN office: P.O. Box 13375, Reno, NV 89507, or email to: gsn@mines.unr.edu		

**Thanks to GEOTEMPS for hosting the February meeting.**

# GSN March 16, 2007 Membership Meeting

---

**Date:** Friday, March 16, 2007

**Time:** Social-6:00, Dinner-7:00 (\$17), Meeting-8:00

**Reservations:** 775/323-3500; fax 323-3599,  
e-mail [gsn@mines.unr.edu](mailto:gsn@mines.unr.edu)

**Deadline:** Reserve by 1 pm Thursday, March 15<sup>th</sup>

**Location:** Elks Lodge, 597 Kumle Lane, Reno, NV

**Directions:** Across (W) from the Reno-Sparks Convention Center (S Virginia St), behind the Les Schwab Tire Center

**Speaker/topic:** R.H. Page, V.P. Linear Metals Corporation.  
See abstract below.

---

## CHINA

### A LOOK AT THE DRIVERS BEHIND THE WORLD'S BIGGEST ZINC PRODUCER

R.H. Page - V.P. Linear Metals Corporation

Between 1993 and 2000 Chinese mined zinc production exploded from 775 KT to 2049 KT per year of contained metal. This accounted for 60% of the global increase in mined zinc during this period even accounting for a massive expansion at Red Dog and the development of the Century deposit in Australia. Incredibly, this dramatic Chinese production increase took place without the development of a single new deposit producing over 30,000 tpy zinc. The growth in Chinese zinc production was due almost entirely to the development of a huge number of small mines. Production from these small mines was difficult to estimate in advance – the world had never seen anything like it - and western predictions of Chinese zinc production fell consistently short resulting in overly rosy price forecasts. These in turn led to ill advised investments such as Pasmenco's fatal decision to develop Century.

The foundation for the growth of Chinese zinc production resides in China's zinc endowment which is arguably superior to that of any of the world's great zinc producing countries (Australia, United States, and Peru). Not only does China have great geology for sedex, Irish, MVT, VMS, skarn, and manto type zinc deposits, it hosts world class examples of each of these deposit types. World class deposits include: major sedex deposits (e.g., the 300 million tonne Dongshengmiao in the Proterozoic of Inner Mongolia, or the 80 million tonne Devonian Changba-Lijiagou of Gansu); VMS deposits (e.g., the 40 million tonne Xitieshan in Qinghai); skarn deposits (e.g., the 50 million tonne Dulong deposit in Yunnan); manto deposits. (e.g., those of the 50 million tonne Dachang District of Guangxi); rich MVT deposits (e.g., Huize in Yunnan with 25% combined Zn-Pb); and Irish type deposits ( e.g., Fankou, China's largest zinc mine with a reserve of 35 million tonnes at 10% zinc). In addition, the largest zinc deposit in China, Lanping with over 12 million tonnes of contained zinc, may represent a unique type of deposit not found anywhere else.

China has an abundance of zinc but this feature alone does not explain its standing as the world's leading producer. Several additional contributing factors include the low cost structure of Chinese mines, which allows for development of deposits that would be mined no where else, and a rural economic setting that promotes development of small mines. A critical question for the global zinc market is whether production of zinc from small Chinese mines can continue to grow at historic rates, increasing pressure on the price of zinc. However, for a variety of reasons, not the least of which is that none of these small mines has a reserve as defined in the western world, production from the small mines should not be sustainable. If this is the case zinc may well turn into the best performer among base metals.

---

## 3<sup>RD</sup> ANNUAL SKI DAY MARCH 18, 2007

The 3<sup>rd</sup> Annual Geologist Ski Day will be March 18, 2007 at the Mt. Rose Ski Area. We finally have some new snow to ski on! Woo Hoo! We will meet at 8:45 a.m. in the upper parking lot of Mt. Rose (same place as last year) and try to head up the lift together. Please bring a side dish or dessert to share. We'll supply the burgers, drinks, and grills. Please bring your own chairs and whatever else you think might make it a better party! We will be eating lunch from 11:30 am to 1:00 pm.

Please RSVP to Laura Ruud at the GSN office, 775/323-3500 or [gsn@mines.unr.edu](mailto:gsn@mines.unr.edu). If you have questions about logistics, please contact Eric Ruud at 775/626-7474 or [eric.ruud@geobrugg.com](mailto:eric.ruud@geobrugg.com).

We always have good food and a great time!



## FROM THE PRESIDENT *continued from page 1*

minerals and their roles in daily life; and methods required for minerals extraction and processing. However, we geologists often are equally ignorant of foreign cultures, politics, and economics. For example, as analytical thinkers, we can't understand why other countries don't welcome us wholeheartedly when we want to develop mines in an environmentally sound way that could lead to improved living conditions and standards for the local community. GSN members who have worked internationally can probably relate to these challenges.

As a non-profit, and non-political organization, we promote the education of K-12 in earth science as one of our missions. But how do we relate to the world outside of earth science and outside of Nevada and the US? Perhaps more challenging than promoting an understanding of earth science is how we apply our scientific approach to non-scientific issues, i.e., cultural, economic, and political. Perhaps of equal importance is how we influence reactions of non-geologists to earth science and natural resource issues.

The well-attended February membership meeting hosted a student poster contest and talk. It was difficult to say who got more out of the student poster contest – the students or poster viewers. It was great to see such an animated crowd, reviewing and discussing posters with students, a mix of graduate and undergraduate students from UNR, as well as a student from Germany, now in Mexico, who unfortunately was unable to attend. Overall this was a win-win competition, and a tradition worth carrying on. Thanks to all participants, judges, and sponsors including **U.S. Gold, Dirk Masuch Oesterreich, and JDL Resources**. More details and the 1<sup>st</sup> through 3<sup>rd</sup> place winners are described later in this issue. The posters were followed by a two-part talk by Mathieu Richer and Bill Gehlen, both of Pacific Rim Exploration Inc. The first part focused on the geologic setting of the El Dorado deposit, and represented results of Mathieu's MS research carried out at MDRU, UBC. Bill provided additional details regarding the vein system, and discussed some of the difficult though rewarding exploration conditions. Numerous students attended the meeting; both student memberships and meeting attendance have continued at an all time high. Many thanks to Lance Taylor of **Geotemps** for sponsoring a fine evening, in addition to his continuing sponsorship of all student memberships.

The GSN ski day is scheduled for Sunday, March 18, 2007. As of this writing, more snow is due, and with luck the chutes will open. Don't forget to check the calendar for chapter meetings that are taking place in the month of March. **CGS, Inc.** will be sponsoring the bar and will have open house with many vendors. The spring field trip to Yucca Mountain and southern Nevada will be in April and limited to 45 participants (see article), so sign up soon to reserve a spot. See you soon!

## 2006–2007 MEMBERSHIP DIRECTORY

The GSN wishes to thank all the supporters of the 2006-2007 Membership Directory. The Directory could not have been possible without the hard work of Raye Buckley and Laura Ruud. We also wish to thank Sir Speedy for printing the directory and Nevada Presort & Mail Marketing for mailing it out.

Remember the GSN Directory is the "Who's Who" in the Great Basin. **Purchase an extra copy (\$10/each) for your home, office, or vehicle. Don't leave for the field without one!**

Agnico Eagle  
ALS Chemex  
American Assay Laboratories  
Joseph R. Anzman  
Baroid Industrial Drilling Products  
Boart Longyear Company  
Carlin Trend Mining Supplies & Service  
CGS, Inc.  
Diversified Drilling  
Eklund Drilling Company, Inc.  
Enviroscientists, Inc.  
Erwin & Thompson LLP  
Ferrari-Lund Real Estate, Gary Fechko  
Florin Analytical  
Geobrug, Inc., Eric Ruud  
GEOTEMPS, Inc.  
GIS Land Services, Greg Ekins  
GIS Technologies, Dennis Geasan  
Steven Hessler  
Buster Hunsaker III  
Inspectorate America Inc.  
International Directional Services  
JBR Environmental Consultants  
Donna Keats  
Keller Williams Group One, Roy McMichael  
Fleetwood Koutz  
Paul Kuhn  
Lang Exploratory Drilling  
Steve Lappin  
Layne Christensen Company  
Legarza Exploration  
Lewis & Roca LLP Lawyers  
LTL Petrographics, Larry Larson  
Mill Man Steel, Inc.  
Northern Nevada Gold, Robert Lutz  
Piedmont Mining Company Inc., Lew Gustafson  
Christopher Pratt  
Professional Graphics Services, Jo Beth Allen  
Puchski/Geoconsultants Intl., Ken Puchlik  
Quantec Geoscience  
Redstar Gold USA Inc.  
Rocklabs Ltd.  
Zsolt Rosta  
Ruen Drilling Inc.  
Saga Exploration  
Schurer & Fuchs  
T&T Exploration LLC, Kip Tonking  
Vector Engineering  
WDC Exploration & Wells  
Western Recon & Mineral Exploration  
Zonge Geosciences Inc.

**Members are encouraged to keep us informed about their own career related moves and awards, and deaths of GSN colleagues. Your information needs to be received by Laura at [gsn@mines.unr.edu](mailto:gsn@mines.unr.edu) by the 21<sup>st</sup> of each month.**

## MapInfo / Discover Training

### For Geologists

#### Reno

**Apr 2-3** Introduction to MapInfo /  
Discover for Geologists

**Apr 4-5** Intermediate MapInfo /  
Discover for Geologists

**Apr 6** Discover 3D

#### Tucson

**Apr 23-24** Introduction to MapInfo /  
Discover for Geologists

**Apr 25-26** Intermediate MapInfo /  
Discover for Geologists

**Apr 27** Discover 3D

800 663-1334 • 520 744-4457

[www.tetrad.com](http://www.tetrad.com) • [info@geografxworld.com](mailto:info@geografxworld.com)

Sponsored by: Tetrad Computer Applications Inc. & GeoGRAFX GIS Services

Fire Assay  
ICP - OES  
ICP - MS  
AAS  
Custom Preparation  
Bullion Analyses  
BLEG

**Corporate Office**  
1500 Glendale Avenue  
Sparks, NV U.S.A. 89431-5902  
Telephone (775) 356-0606  
Fax (775) 356-1413

Chris Ioannakis, Managing Director,  
Analytical Services



## American Assay & Environmental Laboratories

**Elko Office**  
2320 Last Chance Road  
Elko, NV U.S.A. 89801-4852  
Telephone/Fax (775) 738-9100

E-mail: [AALADMIN@aallabs.net](mailto:AALADMIN@aallabs.net)  
Website: [www.aallabs.com](http://www.aallabs.com)



## Carlin Trend Mining Supplies & Service

[www.carlintrend.com](http://www.carlintrend.com)

369 5th St., Elko, NV 89801  
(775) 778-0668, Fax: (775) 778-0687, [carlintrend@frontiernet.net](mailto:carlintrend@frontiernet.net)

Geological Consulting - Claim Staking - Soil Sampling  
Geology & Drafting Supplies - AutoCad & GIS  
Temporary Employees In All Fields

## Big Sky Geophysics

Clark Jorgensen, M.Sc.  
Geophysicist

*Field Work  
Processing  
Interpretations*

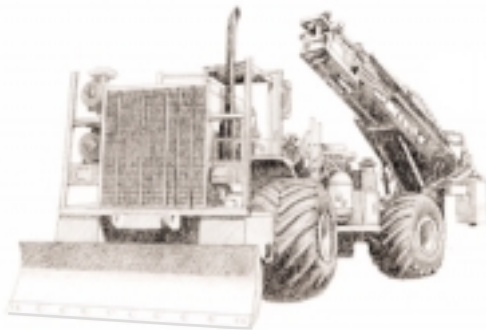
P.O. Box 353  
Bozeman, MT 59771  
USA

Phone: (406) 587-6330  
Fax: (406) 587-6394  
Mobile: (406) 580-9718  
[clark@bigskygeo.com](mailto:clark@bigskygeo.com)

For more details, my background, and case studies,  
visit my webpage at [www.bigskygeo.com](http://www.bigskygeo.com)

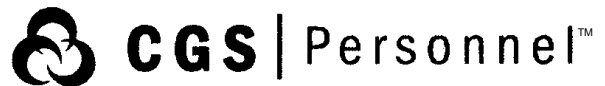


## DIVERSIFIED DRILLING, LLC



*Providing Drilling Services To The  
Mining/Metals Industry Since 1980*

3650 Grant Creek Road  
Missoula, Montana 59808  
Phone: (406) 542-1010 Fax: (406) 542-5065  
[www.diversifieddrilling.com](http://www.diversifieddrilling.com)



**DIXIE BULLOCK**  
DISTRICT MANAGER

**WILMA HATTER**  
SERVICE REPRESENTATIVE  
[HATTERW@SOSSTAFFING.COM](mailto:HATTERW@SOSSTAFFING.COM)

390 East Moana Ln., Ste. 2  
RENO, NV 89502  
T. 775.331.5227 F. 775.323.7772  
[WWW.SOSSTAFFING.COM](http://WWW.SOSSTAFFING.COM)

*A Division of SOS Staffing Services, Inc.*

## MINERAL EXPLORATION SERVICES

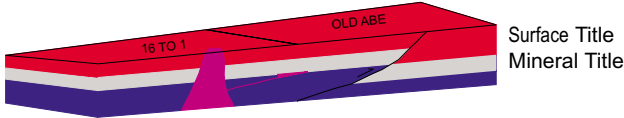
**SOIL SAMPLING  
CLAIMSTAKING  
PROPERTY EVALUATION  
MINE HAZARD FENCING**

5655 Riggins Ct., #15, Reno, NV 89502  
Tel: (775) 954-1082 Fax: (775) 829-6882  
email: [day@mineralexploration.com](mailto:day@mineralexploration.com)



# GIS Land Services

Greg Ekins M.S. R.L.P. #32306 President  
Mineral Landman - GIS Cartographer



“From Courthouse Records to Final Map”

- Land Status Maps
- Geologic
- Geo Chem
- AutoCad Map
- Arc Map
- Mapinfo
- Discover
- Power Point



5365 Mae Anne Ave B-14A  
Reno, NV 89523  
P:775-746-8803  
P:775-746-2110  
F:775-746-8802  
E:greg@gislandservices.com

[www.gislandservices.com](http://www.gislandservices.com)

# Stephen D. Lappin



Consulting  
Landman

- Claim Staking
- Mapping
- Land Status
- Title

Cell: (970) 260-0293

Fax: (970) 241-9523

Email: [Lappins@earthlink.net](mailto:Lappins@earthlink.net)

2830 North Ave., C5B #164

Grand Junction, CO 81501

# Sample Bags

HUGE INVENTORY

LOW, LOW PRICES



**NEW ADDRESS!**  
**LEGEND, INC.**

988 Packer Way  
Sparks, NV 89431

Off Glendale east of McCarran  
phone: (775) 786-3003  
fax: 786-3613  
[www.Lmine.com](http://www.Lmine.com)  
email: [info@Lmine.com](mailto:info@Lmine.com)

# ALS Chemex



We are a global analytical testing company serving the mining and mineral exploration industry in Nevada and around the world.

**We specialise in:**

- Assaying and geochemical analysis for mining and mineral exploration projects
- On-site contract mine laboratory management
- Environmental monitoring of mining operations
- Acid mine drainage studies

Contact our laboratories in Nevada to find out how we can help you with all of your project's analytical needs.

**RENO, NV**

Phone: 775 356 5395

**ELKO, NV**

Phone: 775 738 2054

**WINNEMUCCA, NV**

Phone: 775 625 4192

[www.alschemex.com](http://www.alschemex.com)

*Right solutions....  
....Right partner*



# Enviroscientists, Inc.

4600 Kietzke Lane, Suite C 129, Reno, Nevada 89502

Phone: (775) 826-8822 Fax: (775) 826-8857

**Notices, Plans of Operations,  
Cost Estimates, TRI, Biological Surveys,  
Air Quality Permits & Audits**

[Info@enviroincus.com](mailto:Info@enviroincus.com)

[www.enviroincus.com](http://www.enviroincus.com)

# T&T EXPLORATION LLC

CLAIM STAKING SAMPLING MAPPING GPS

KIP TONKING  
GEOLOGIST



236 Stewart Street  
Reno, NV 89501

Phone: (775) 831-3471  
Cel: (775) 750-3663  
Fax: (775) 831-3471  
Res: (775) 831-3470  
[ktonking@msn.com](mailto:ktonking@msn.com)



**JOSEPH R. ANZMAN**

*Exploration Geophysicist*

- consulting
- interpretation
- project management
- geophysical surveys
- domestic & foreign

P.O. Box 370526  
 Denver, Colorado 80237  
 303-337-4559  
 telephone/fax

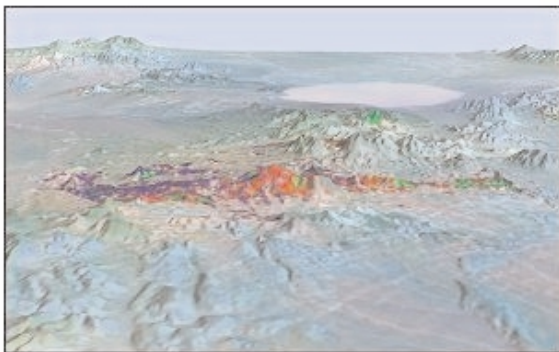


**WESTERN RECON**  
 and  
**Mineral Exploration Inc.**

**Claim Staking / Soil Sampling / Grids**  
**Experienced / Dependable/ Trimble GPS**  
 Gary Castagne 775-250-4879  
 John Fernandez 775-815-2587

**www.westernrecon.com**

**EXPLORATION with ASTER**



*Alteration Image, Goldfield, Nevada*

- **CUSTOM CORRECTED DATA**
- **ALTERATION IMAGERY**
- **EXTENSIVE GLOBAL ARCHIVES**

WWW.ASTERIMAGES.COM  
 email: pusa@rmi.net  
 dwc@overhill-imaging.com

**RENT A PIMA!!**



IDENTIFY and MAP ALTERATION  
 MINERALS IN THE FIELD and CORE  
 CONTACT US FOR Rentals and Services

*Spectral International, Inc*  
 303 403 8383 pusa@rmi.net  
 www.specmin.com



**ENVIRONMENTAL SERVICES  
 FOR THE MINING INDUSTRY**

**environmental consultants, inc.**

- Baseline Studies
- Environmental Permitting
- Monitoring & Compliance
- Reclamation & Closure Plans
- Investigation & Remediation

**Elko Location  
 775-738-8766**

www.jbrenv.com      Reno and Salt Lake City locations

**GSN Newsletter  
 Monthly Advertising Rates**

Business card size (3 1/2 x 2")	\$ 50.00
Quarter page (3 1/2 x 4 3/4")	150.00
Half page (4 3/4 x 7 1/2")	300.00
Classified ads \$10/line (up to business card size)	

For an advertising form, call the GSN office at 775/323-3500 or fax 323-3599. Digital or text ads must be received by the 20<sup>th</sup> of the month to appear in the following month's newsletter.

# ACTIVITY UPDATE

Mike Brady, January 2007  
www.activityupdate.com

## NEVADA

The Nevada Division of Minerals announced exploration spending within the state during 2005 aggregated \$121,300,000. (was \$79,700,000 during 2004)

*Press Release:* November 15

Queenstake Resources Ltd. announced that production from the Jerritt Canyon Complex during 2006 aggregated 169,700 ounces of gold of which 15,500 ounces were obtained from the processing of Newmont purchased ores.

*Press Release:* January 15

Queenstake Resources Ltd. announced it filed suit against American International Specialty Lines Insurance Co. seeking \$8,000,000 as a reimbursement for the constructions cost of an evaporation pond at the Jerritt Canyon Complex that was mandated by the State. (reserve = 3,700,000 tons @ 0.237 opt Au proven+probable)

*Press Release:* January 22

Queenstake Resources Ltd. announced recent drill results at the Jerritt Canyon/West Coulee Project include 1,045-1,070 feet @ 0.285 opt Au (MAH301); 1,015-1,020 feet @ 0.211 opt Au (MAH303); 955-990 feet @ 0.228 opt Au (MAH330); 880-895 feet @ 0.241 opt Au (MAH331) and 1,065-1,075 feet @ 0.285 opt Au (MAH334).

*Press Release:* January 18

Queenstake Resources Ltd. announced recent drill results at the Jerritt Canyon/Mahala Extension Project include 845-880 feet @ 0.233 opt Au (MAH308); 875-890 feet @ 0.382 opt Au (MAH322); 880-895 feet @ 0.494 opt Au (MAH323) and 835-855 meters @ 0.265 opt Au (MAH324). (reserve = 241,920 tons @ 0.310 opt Au probable)

*Press Release:* January 18

Queenstake Resources Ltd. announced recent drill results at the Jerritt Canyon/Dash Ridge Project include 665-685 feet @ 0.368 opt Au (SH1129); 750-760 feet @ 0.167 opt Au (SH1130); 660-675 feet @ 0.414 opt Au (SH1131); 600-615 feet @ 0.154 opt Au (SH1138) and 885-895 feet @ 0.153 opt Au (SH1143). (reserve = 199,770 tons @ 0.220 opt Au probable)

*Press Release:* January 18

Victoria Resource Corp. announced recent drill results at the Cove-McCoy Project include 435.9-661.4 meters @ 0.080 opt Au (NW-1) and 516.6-576.1 meters @ 0.053 opt Au (NW-3).

*Press Release:* January 9

Gryphon Gold Corp. announced it revised its resource estimates for the Borealis Project to now include 40,810,000 tons @ 0.029 opt Au, 0.21 opt Ag measured+indicated, a decline of roughly 10-15% from previous estimates. The company went on to state that it is now delaying any planned production financing pending the completion of an independent technical review of the project.

*N.M.:* December 15

AuEx Ventures Inc. announced recent drill results at the West Pequop Project include 740-750 feet @ 0.013 opt Au (WN057); 990-1,000 feet @ 0.015 opt Au (WN059); 465-525 feet @ 0.027 opt Au (WN061); 305-335 feet @ 0.029 opt Au (WN062) and 505-560 feet @ 0.182 opt Au (WN063).

*Press Release:* January 9

AuEx Ventures Inc. announced recent drill results at the Long Canyon Project include 0-25 feet @ 0.070 opt Au (LC031); 0-30 feet @ 0.076 opt Au (LC032); 350-370 feet @ 0.013 opt Au (LC035); 35-75 feet @ 0.021 opt Au (LC037) and 165-225 feet @ 0.047 opt Au (LC037).

*Press Release:* January 18

Golden Odyssey Mining Inc. announced it acquired an option to earn a 100% interest in the White Rock Property from private interests for a retained net smelter royalty to the owner.

*Press Release:* January 4

Midway Gold Corp. announced recent drill results at the Spring Valley/West Diatreme Project include 87-102 meters @ 0.014 opt Au (SV06-216); 133-151 meters @ 0.013 opt Au (SV06-216); 113-123 meters @ 0.268 opt Au (SV06-217) and 145-162 meters @ 0.048 opt Au (SV06-217). (project = 10,030,000 tons @ 0.024 opt Au measured+indicated)

*Press Release:* January 11

Midway Gold Corp. announced recent drill results at the Spring Valley/North Hill Project include 128-137 meters @ 0.075 opt Au (SV06-225); 209-242 meters @ 0.048 opt Au (SV06-231); 204-238 meters @ 0.052 opt Au (SV06-234) and 82-87 meters @ 0.067 opt Au (SV06-235). (project = 10,030,000 tons @ 0.024 opt Au measured+indicated)

*Press Release:* January 11

Midway Gold Corp. announced recent drill results at the Spring Valley/Porphyry Project include 62-64 meters @ 0.017 opt Au (SV06-232) and 85-87 meters @ 0.111 opt Au (SV06-233). (project = 10,030,000 tons @ 0.024 opt Au measured+indicated)

*Press Release:* January 11

U.S. Gold Corp. announced it would commence formal tender offers for Nevada Pacific Gold Ltd., Tone Resources Ltd. and White Knight Resources Ltd. It also stated that it would not pursue its previously announced acquisition plan of Coral Gold Resources Ltd.

*Press Release:* January 18

Gold Canyon Resources Inc. announced recent drill results at the Cordero Project include 40-135 feet @ 60.3 grams/tonne Ga (C-100); 140-200 feet @ 51.3 grams/tonne Ga (C-114); 120-170 feet @ 63 grams/tonne Ga (C-115); 140-190 feet @ 72.2 grams/tonne Ga (C-116) and 80-140 feet @ 39.5 grams/tonne Ga (C-118).

*Press Release:* January 8



## STUDENT POSTERS

Twelve posters turned out for the student poster competition at the February 16 GSN dinner meeting in Reno, a strong showing. It was a great inspiration to see the top-notch research being done by students in geology, geophysics, hydrology, and planetary science. Field areas included Nevada, Cascade volcanoes, the Pacific ocean floor, and ... (drumroll please)... Mars! Research tools ranged from classic careful mapping and petrography that would make geology's founders proud, to the latest in GIS and planetary/interplanetary remote sensing. There were so many people checking out the posters, the judges had a hard time getting through to read them all. All the posters were worthy, and it was hard to settle on winners. Here are all the posters and authors:

**E. Baffoe-Twum, J. Bell, S. Tyler, and J. Fischer**

Using InSar To Determine Aquifer Systems Response In North Central Nevada Related To Mine Dewatering

**Mareike Buttstaedt**

Map of Precious and Base Metal Mining Companies in Nevada

**Elizabeth Creek**

P-wave anisotropy of a portion of the ocean crust

**Matthew H. Hastings**

A preliminary report on the relationship of base-metal skarn mineralization to Carlin-type gold mineralization at the East Archimedes gold deposit, Eureka District, Eureka County, Nevada

**R.D. Koehler and S.G. Wesnousky**

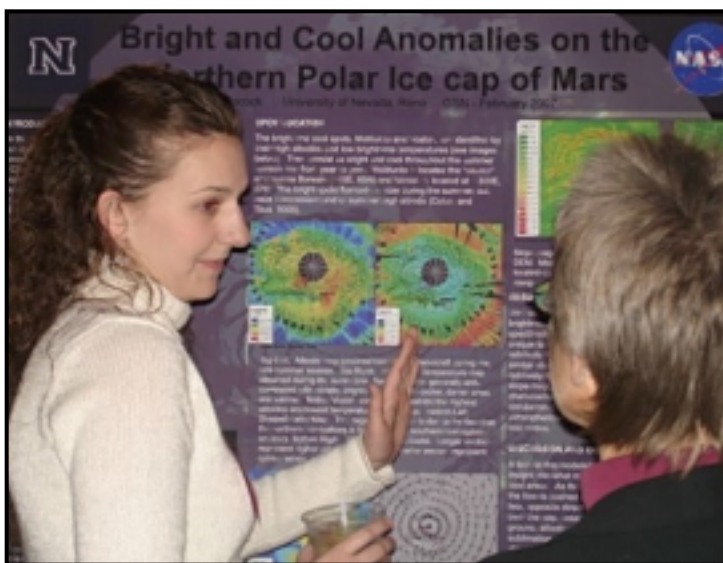
Late Pleistocene Earthquakes Along the Simpson Park Mountains Fault: Long-term Contribution to Basin and Range Extension, Nevada

**Aasha Pancha, John G. Anderson, Glenn Biasi, Rasool Anooshepor, and John N. Louie**

Empirical site response and comparison with measured site conditions at ANSS sites in the Reno area



**Edmund Baffoe-Twum presents his prize winning poster to GSN members Neil Prenn and Rich DeLong**



**Jill Pocock explains her poster to GSN member (and judge), Elizabeth Zbinden**

**Jill Pocock**

Bright and Cool Anomalies on the Northern Polar Ice Cap of Mars

**Wes Sherlock**

The formation of secondary sulfates and their local effects on the efficiency of heap style biooxidation of low-grade refractory gold ore at Gold Quarry, Carlin, Nevada

**Wes Sherlock**

Comparison of sulfide mineralogy and petrology of low-grade refractory gold ore focusing on arsenic species both pre and post biooxidation from Gold Quarry, Carlin, Nevada

**Jeff Shoffner**

Methods for Classifying Hematite Spherules at Meridiani Planum

**S. D. Thompson, W. M. Calvin, and W. H. Farrand**

Stratigraphic Correlation via Opportunity's Pancam of the Burns Formation, Meridiani Planum, Mars

**Sean N. Warren, Robert J. Watters, and David S. Tucker**

Future Edifice Collapse as a Result of Active Hydrothermal Alteration and Geologic Structure at Mt. Baker, Washington

Competition winners were:

1<sup>st</sup> Prize, Edmund Baffoe-Twum - \$100

2<sup>nd</sup> Prize, Rich Koehler - \$75

3<sup>rd</sup> Prize, Matt Hastings - \$50

Thank you to all the students who entered, thank you to the GSN members who judged them, and thank you to the sponsors who provided prize money.

## UPCOMING EVENTS

**Mar 1, Thursday** – NV Petroleum Society. Speaker: Ron Wenker, Nevada BLM Director, Title: “BLM Resource Management Plans”. Austin’s Restaurant, 7671 South Virginia St, Reno. Cocktails at 6:30 pm, dinner at 7:00 pm (\$17 for members; \$19 for non-members). Reservations required. For further information, please contact Sam Limerick at [shlimerick@charter.net](mailto:shlimerick@charter.net) or 775/825-0640.

**Mar 2** – Yardley Lecture – Richard Kettler, University of Nebraska, Lincoln. Title: “Fe-C-S Diagenesis & Carlin-type Gold Deposits”. University of Nevada, Reno, LMR-353, 3 pm.

**Mar 4-7** – Prospectors and Developers Association of Canada International Convention, Metro Toronto Convention Centre, 255 Front St., Toronto, Canada. For registration go to [www.pdac.ca](http://www.pdac.ca) or fax form to 905-463-1854. Come visit us at the GSN Booth #938!

**Mar 6, Tuesday** – Arizona Geological Society Dinner Meeting. Karen Weinrich, Consultant, “Arizona Breccia Pipe Uranium Deposits: The Highest Grade Uranium in the USA”. Inn Suites Hotel: 475 N. Granada Ave., Tucson, AZ. Call 520/663-5295 for reservations.

**Mar 8, Thursday** – Great Basin College Speakers and Events Series presents noted historian and author Simon Winchester at 7:00 pm. The program, sponsored by Nevada Humanities, will be held in the Great Basin College Theater located at 1500 College Parkway in Elko. There is no charge for admission.

**Mar 14, Wednesday** – WINNEMUCCA CHAPTER MEETING. Speaker: Richard Hipsley, Barrick Gold Exploration, Inc. Topic: South Arturo Project. Our generous sponsor will be Small Mines Development (SMD). The Martin Hotel, W. Railroad and Melarkey Streets. Drinks at 6:30 pm, talk at 7 pm. Contact Ivan Johnston, Chapter President, for more info, 775/635-4292, [Ivan.Johnston@Newmont.com](mailto:Ivan.Johnston@Newmont.com).

**Mar 15, Thursday** – ELKO CHAPTER MEETING. Speaker: Kevin Creel, Barrick Cortez Gold Mine. Topic: Cortez Hills Deposit and Development. Western Folklife Center, 501 Railroad Street, Elko, NV. Drinks at 6:00 pm, talk at 7:00 pm. Contact Richard Reid, Chapter President, at 775/778-3912, [Richard.Reid@newmont.com](mailto:Richard.Reid@newmont.com) for more information.

**Mar 16, Friday** – GSN MEMBERSHIP MEETING. Speaker: Bob Page, V.P. Linear Metals Corporation, Inc. Title: “China – A Look at the Drivers Behind the World’s Biggest Zinc Producer”. Reno Elks Lodge, 597 Kumle Ln, Reno, NV. Drinks at 6 pm, dinner at 7 pm (\$17), talk at 8 pm. Contact Laura Ruud for reservations, 775/323-3500, [gsn@mines.unr.edu](mailto:gsn@mines.unr.edu).

**Mar 18, Sunday** – GSN SKI DAY. Mt. Rose Ski Area, meet at 8:45 am in the upper parking lot.

**Mar 30 – Apr 1** – National Fossil Exposition XXIX. Sponsored by the Mid-American Paleontology Society, Western Illinois University; Macomb, Illinois. <http://midamericapaleo.tripod.com/>.

**Apr 1-4, 2007** – AAPG-Annual Meeting - Long Beach, CA - [www.aapg.org](http://www.aapg.org) Long Beach Convention and Entertainment Center - hosted by Pacific Section AAPG.

**Apr 12-13, Thursday & Friday** – GSN Spring 2007 Field Trip: Nevada Test Site and Yucca Mountain. Details and sign up form on page 2. Fax or mail your registration and payment to Laura Ruud at the GSN office as soon as possible to reserve a spot.

## WINNEMUCCA CHAPTER MARCH 14<sup>th</sup> MEETING

### SOUTH ARTURO

Richard Hipsley, Paul Dobak and Dave Arbonies  
Barrick Gold Exploration Inc.

South Arturo is a “Carlin-type”, breccia-hosted, oxide gold deposit located at the north end of the Carlin Trend. The discovery hole was drilled in August 2005 from mine dumps 1,000 ft south of the Dee open pit. Discovery hole (BD-72) encountered a cumulative 245 ft @ 0.056 opt Au beneath 850 ft of post mineral Tertiary Carlin Formation. Oxidation extends to depths greater than 2,000 ft in the deposit area. The deposit is presently in definition drilling stage with 100,000 ft of drilling completed to date. A resource estimate is in progress. This paper will focus on the discovery and descriptive characteristics of the mineralization.

## SIMON WINCHESTER TO SPEAK IN ELKO, NEVADA

Great Basin College Speakers and Events Series presents noted historian and author Simon Winchester at 7:00 PM on March 8, 2007. The program, sponsored by Nevada Humanities, will be held in the Great Basin College Theater located at 1500 College Parkway in Elko. There is no charge for admission.

The program is entitled *Volcanoes, Tsunamis, Earthquakes, and Humanity* and will focus on how geology impacts humanity. Simon Winchester, multiple New York Times best-selling author, globe-trotting journalist, and geologist with inimitable storytelling abilities from Oxford England, shares fascinating insights into the global impact of geological events and the course of human history.

Books by Simon Winchester include: *Krakatoa: The Day the World Exploded: August 27, 1883*, *A Crack in the Edge of the World: America and the Great California Earthquake of 1906* and *The Map That Changed the World: William Smith and the Birth of Modern Geology*.

*Thank you to our  
generous donors*

### Student Dinner Fund

Jeffrey Abbott  
Del Flint  
William Lindqvist



# Mongolian Experience

by Elizabeth Zbinden

We got the news that Bayan Airag camp was to be shut down for the winter as of September 30<sup>th</sup>. Three people would remain in the camp to look after the property. Other local staff would have a winter break and the foreign staff would move on. Winterizing the camp involved re-arranging it. Some gers we returned to the owners; others we kept but moved to new locations and consolidated functions. We consolidated the two-ger kitchen-dining complex into a single ger. Here we dismantle the kitchen ger.



Usually when Mongolians move a ger, they completely dismantle it, pack it up, and take it miles away to an entirely new site. Moving a ger only a few tens of feet is different. When our logistics guy suggested moving the ger walls without folding them up first, the staff laughed. But it worked!

After the camp closure, I spent some time working at

QGX's office in Ulaanbaatar, writing up the season's work. I stayed in a modern apartment kept by QGX for its foreign staff, but gers were never far away. Here is a view from the apartment window.

You can see the ger next door. Beyond it on the left is a Soviet-era apartment block: solid, utilitarian and scruffy. In the middle are two newer apartment buildings, not unlike the one I'm standing in to take this picture. To the right is a stream bed—not much water there now, but the size of the retaining walls suggests there is more flow at other times of the year. You can also see the footbridge we walk across getting to and from the QGX office.



*Continued in the April newsletter.*

# GEOLOGICAL SOCIETY OF NEVADA



gsn@mines.unr.edu • www.gsnv.org  
Telephone (775) 323-3500 FAX (775) 323-3599  
Post Office Box 13375  
Reno NV 89507  
USA

NON PROFIT  
ORGANIZATION  
U.S. POSTAGE  
PAID  
RENO, NV  
PERMIT NO. 931



## PROFESSIONAL STAFFING FOR THE MINERALS INDUSTRY

**ENGINEERS      GEOLOGISTS      LABORERS      CLERICAL STAFF      TECHNICIANS**  
**EQUIPMENT OPERATORS      MANAGERIAL STAFFING      EXECUTIVE RECRUITMENT**

AS THE ESTABLISHED LEADER IN PROFESSIONAL PERSONNEL SERVICES TO THE MINING AND MINERALS INDUSTRY, GEOTEMPS STANDS WITH THE INDUSTRY AT PUBLIC HEARINGS, IN GOVERNMENT LOBBY EFFORTS, FOR WRITE-IN CAMPAIGNS, WITH BUSINESS DONATIONS, AND WITH INDUSTRY ASSOCIATIONS.

### RENO

775-746-7146  
970 CAUGHLIN XING  
SUITE 102, 89509  
FAX: 775-746-7156

### ELKO

775-738-4707  
557 WEST SILVER ST.,  
SUITE 201A, 89801  
FAX: 775-738-0409

### ELY

775-289-6448  
725 AVENUE K,  
SUITE B, 89301  
FAX: 775-289-6472

### TUCSON

520-292-1000  
4760 NORTH ORACLE RD.,  
SUITE 200, 85705  
FAX: 520-292-9100

### WINNEMUCCA

775-625-1555  
FAX: 775-625-1556  
**www.geotemps.com**  
**mining@geotemps.com**