

# GEOLOGICAL SOCIETY OF NEVADA NEWSLETTER

Geological Society of Nevada, PO Box 13375, Reno, NV 89507 (775) 323-3500  
Office Location: Laxalt Mineral Research Center, Room 266, UNR - Hours Monday -- Friday 8-3  
Website: [www.gsnv.org](http://www.gsnv.org) • E-mail: [gsn@gsnv.org](mailto:gsn@gsnv.org)



March 2009, Vol. 24, No. 3

Published monthly except June and July

## PRESIDENT

**Marcus Johnston**  
Victoria Resources US Inc.  
[marcus@apexmineralresources.com](mailto:marcus@apexmineralresources.com)

## VICE PRESIDENT

**Mike Ressel**  
Kinross Gold Corporation  
[mikeressel@sbcglobal.net](mailto:mikeressel@sbcglobal.net)

## SECRETARY

**D.D. LaPointe**  
Nevada Bureau of Mines and Geology  
[dlapoint@unr.edu](mailto:dlapoint@unr.edu)

## INTERIM TREASURER

**Marcus Johnston**  
Victoria Resources US Inc.  
[marcus@apexmineralresources.com](mailto:marcus@apexmineralresources.com)

## MEMBERSHIP CHAIR

**Opal Adams**  
Enviroscientists, Inc.  
[ofadams@enviroincus.com](mailto:ofadams@enviroincus.com)

## PUBLICATION CHAIR

**Marilyn Miller**  
AuEx Ventures, Inc.  
[marilyn.miller1@sbcglobal.net](mailto:marilyn.miller1@sbcglobal.net)

## OFFICE MANAGER

**Kathy Sestanovich**  
[gsn@gsnv.org](mailto:gsn@gsnv.org)

## CALENDAR OF GSN EVENTS

**March 11  
Wednesday**

### WINNEMUCCA CHAPTER *(Every 2nd Wednesday of the month)*

The monthly meeting will be held at the Martin Hotel, 94 West Railroad Street. Drinks and appetizers at 6:30 PM, speaker at 7:00 PM. Sponsor for the evening will be Boart Longyear. Speaker for the evening will be Jim E. Essman, Newmont Exploration. His talk will be titled "**The Eocene Conspiracy: What The Rocks Don't Want You to Know**". (see abstract on page 8). For more information contact John Marma at (775) 635-6472.

**March 19  
Thursday**

### ELKO CHAPTER *(Every 3rd Thursday of the month)*

The monthly meeting will be held at the Western Folk Life Center, 501 Railroad Street. Refreshments at 5:00 PM, Dinner at 6:00 PM, talk at 7:00 PM beginning at 6:00 PM, speaker at 7:00 PM. Sponsor for the evening to be announced. Speaker for the evening to be announced. For more information contact Moira Smith at (775) 934-2987.

**March 20  
Friday**

### GSN MEMBERSHIP MEETING *(Every 3rd Friday of the month)*

The monthly meeting will be held at the Reno Elks Lodge, 597 Kumle Lane, Reno, NV. Drinks at 6:00 PM, dinner at 7:00 PM, and talk at 8:00 PM. Sponsor for the evening will be Ruen Drilling Inc. (Jon Carpenter). Speaker for the evening will be Richard Harris, Harris & Thompson. His talk will be titled "**Mining Law: Myths and Realities**". (see abstract on page 3). Dinner reservations must be made by 1:00 PM Wednesday, March 18th. Contact Kathy Sestanovich at (775) 323-3500 or e-mail [gsn@gsnv.org](mailto:gsn@gsnv.org) for reservations.

**March 26  
Thursday**

### SOUTHERN NEVADA CHAPTER *(The last Thursday of the month)*

The monthly meeting will be held at 6:45 PM. Speaker for the evening to be announced. Sponsor for the evening to be announced. For more information contact Josh Bonde at (702) 468-2500.

## FROM THE PRESIDENT

Marcus Johnston, *GSN President 2008-2009*

February did not fail to deliver long-awaited snow and rain across Nevada, which curtailed exploration and development activities even at the lower elevations. The immediate outlook does not suggest an increased pace in March or April, as indicated by the number of drill rigs parked in lots across the state and assay laboratories competing with one another for the limited available business. But, there is a definite change in the wind that may mean activity heating up with the weather in May and into the summer months. As I write this, gold has just passed the seven-month high, and likely will test the all-time high of \$1,003 an ounce, hit one year ago. With natural resource-focused websites littered with headlines like "Gold Feeding Frenzy as Economy Worsens," and "Gold Soars on Fears over Global Banking Crisis," it is clear that uncertainties in various markets and economies are driving investors back into gold. There has also been a recent positive shift in the availability of funds for certain exploration and mining companies working in Nevada and elsewhere, which could soon expand to other existing and newly created companies.

*(Continued on page 2)*

## GSN MARCH MEETING SPONSOR

**RUEN DRILLING**  
Incorporated

**35**  
YEARS  
1974 2009

*Diamond Core Drilling Services  
for Mining, Engineering / Geotechnical,  
and Geothermal Industries*

P.O. Box 267  
Clark Fork, Idaho 83811

800-322-3201  
Fax 208-266-1379

[www.ruendrilling.com](http://www.ruendrilling.com)



# News and Announcements

(Continued from page 1)

In the meantime, the slowed pace presents an opportunity for many of us to catch up on the latest research pertaining to Nevada geology and ore deposits in general. The February meeting in Reno lent itself to this purpose, with short presentations from three students from the University of Nevada – Reno. Jessica Smith, Dan Sturmer, and Lucia Patterson gave talks on the Adanac molybdenum property in Canada, a discussion on carbonation of mafic rocks still working its way through my feeble brain, and the Jerritt Canyon district in Nevada, respectively. Such work proves a capable crop of young scientists is ready to step into needed roles in various fields in Nevada and elsewhere.

Kevin Creel is the March 'Face' of GSN. Those who have worked out of Elko with Kevin, at Newmont, Placer Dome, and/or Barrick properties, already know that this understated geologist and engineer is one of the most gifted of the relatively few "Gen-X" crop of workers that fill a large gap between the "over-50" and "under-30" groups. Kevin's abilities are matched only by his humility and willingness to work under the radar in an industry more commonly frequented by "look at me" climbers.

March brings a major shift in speaker topics, as Richard Harris will provide details of the Mining Law of 1872 that may have many of us leaving for our claims and/or appropriate state and federal government offices either just after the talk, or early Monday morning. I am looking forward to witnessing the audience reactions during his talk, and also to catching up with many friends and partners over a glass of wine or two. See you then.

Stay safe,  
Marcus

*Thank you to our  
generous donors*

## GSN FOUNDATION

**GOLD LEVEL DONORS \$500+**

**SILVER LEVEL DONORS \$100-\$499**

**BRONZE LEVEL DONORS \$1-\$99**

Curt P. Dechert  
Aziz Tejan-Jalloh

## STUDENT DINNER FUND

Lindsay D. Craig

## UPCOMING EVENTS

- Mar. 18 MapInfo/Discover Users Group Meeting**  
Silver Legacy – Silver Baron Room 2 at 6:00-8:00 PM, to explore the idea of forming a MapInfo / Discover Users Group. See page 7 for details.
- April 3 Mackay Geology Seminar**  
**David A. Johnson**, Bronco Creek Exploration, Inc.,  
"Jurassic Copper-Iron Deposits of Nevada."  
3:00 PM, Room 353, Laxalt Mineral Research Building, University of Nevada, Reno.
- April 17 8:30 AM - 4:30 PM - University of Nevada Las Vegas 4th Annual GeoSymposium Keynote talks & Geoscience student presentations in the Blasco Event Wing of the UNLV Foundation Building**  
**4:15 PM - Reception & Silent Auction**, in the Lilly Fong Geoscience Building.
- April 18 8:30 AM - 5:00 PM - University of Nevada, Las Vegas 4th Annual GeoSymposium Field Trip to Arrow Canyon and Valley of Fire State Park.**  
  
See the GeoSymposium website for registration and additional details. <http://geoscience.unlv.edu/GeoSymposium/GeoSymposium.htm>
- May 8- GSN 2009 Spring Field Trip**
- May 10 Diverse Gold Deposits of the Osgood Mountains and Humboldt Range, North-Central Nevada: Pinson-Getchell-Turquoise Ridge and Spring Valley-Lincoln Hill-Wilco.** See page 11 for details.
- June 27 GSN Golf Tournament (Lakeridge Golf Course) - Hosted by Inspectorate America Corporation.** Tee time will be at 1:00 PM and dinner will be at 6:00 PM. See page 7 for more details.

---

### MapInfo/Discover Users Group Meeting Reno, Nevada

There will be a meeting on March 18<sup>th</sup> at the Silver Legacy – Silver Baron Room 2 at 6-8pm to explore the idea of forming a MapInfo / Discover Users Group. The focus of the group would be to support those using MapInfo and Discover products. The Users Group would provide opportunities for members to get together to network, exchange ideas, learn technical tips, share knowledge about applications, data, and services, etc. The success of the Users Group is based on everyone's involvement. Please join us on March 18<sup>th</sup> and let us know what topics would be of interest to you. If you cannot attend the meeting, but would like to be involved, please contact Barbara Carroll at 520 744-4457 or [geografx@sprynet.com](mailto:geografx@sprynet.com)

**Thanks to Harris Drilling Services  
for hosting the February meeting**

# *GSN March 20, 2009 Membership Meeting*

---

## **RESERVATIONS ARE REQUIRED**

**GSN CAN NO LONGER GUARANTEE DINNER SEATING WITHOUT AN ADVANCED RESERVATION.**  
Please call 775-323-3500, Fax 775-323-3599 or e-mail [gsn@gsnv.org](mailto:gsn@gsnv.org) by 1:00 PM, Wednesday, March 18, 2009.  
**Social Hour: 6:00 PM – Dinner: 7:00 PM – Speaker: 8:00 PM**

**Location: Elks Lodge, 597 Kumle Lane, Reno, NV**  
**Directions: Across (W) from the Reno-Sparks Convention Center**  
**(S. Virginia Street, behind the Les Schwab Tire Center)**

## **MINING LAW: MYTHS AND REALITIES**

**Richard W. Harris, Mining Attorney**  
**Harris & Thompson, Reno, Nevada**

There continue to be many questions and misconceptions regarding the Mining Law of 1872 and its implementing regulations. When, exactly, do mining claims become void because of failure to pay annual maintenance fees? What is the effect of a late recording (or no recording) in Nevada of an Affidavit and Notice of Intent to Hold? What are the common “traps” associated with a Small Miner’s Exemption? Can a mining company locate valid lode claims over an existing placer claim without consent? These and other issues will be examined by Richard Harris, a long-time Reno mining attorney.

---

## **GSN Needs Office Furniture**

The GSN office will be moving from the UNR campus in April 2009 to the NBMG’s Great Basin Science Sample and Records Library building located on the Desert Research Institute campus

The GSN is in the need of furniture for our new office on the DRI campus. If anyone has the following furniture they are willing to donate to GSN, we would appreciate your help:



- 2 Letter size 4-drawer file cabinets or tall lateral file cabinet
- 1-Letter size 2-drawer file cabinet
- Large supply cabinet
- 2-3 tall bookcases
- 1-2 credenzas
- Guest chairs



## **GSN Needs Volunteers**

GSN is also looking for volunteers to help with the move in April. We don’t have a firm date yet, but when that is available we will let you know.



Please contact Kathy at the GSN office at 775 323 3500 or via email at [gsn@gsnv.org](mailto:gsn@gsnv.org).



# **FACES OF GSN**

*Kevin Creel, Elko, Nevada*  
*Chief Geologist, Exploration, Barrick Cortez*

As a starting point for my personal history, I thought back to when I first learned of the GSN. It was at Colorado School of Mines in 1993 or 1994; I found several GSN Symposium volumes while researching Carlin-style mineralization for an Applied Mineral Exploration course taught by Dr. Graham Closs. At the time, the quality of the discussion within was notable given the hands-on experience of the numerous contributors and the in-depth description of the various deposits presented within. Looking back, the symposium volumes are an incredible set of references that capture a unique piece of exploration and mining history ... an evolving story of Carlin-style gold deposits as documented by the applied scientists that looked for, found, studied, and develop these world class deposits.

Since discovering GSN, I have had the good fortune to work in the field I studied with the majority of my efforts focused in Nevada. My interest in rocks and discovery are rooted in childhood. My dad, a fellow geologist, hooked me the same as he had been hooked in his youth, by collecting rocks. I pursued that passion by seeking a Geological Engineering degree with an emphasis on mineral exploration and after the first year of study found a summer job as a field assistant at the U.S. Bureau of Mines. There I worked throughout the western US with talented group of geologists at the Resource Evaluations Branch for several summers and any other time my schedule permitted. That opportunity continued until the early stages of the Bureau's closure in 1994. Shortly before graduation I joined BHP Minerals as an exploration geochemist. Again I worked with a talented and motivated team, this time all geochemists, researching, developing, and applying new technology in support of BHP's global exploration efforts. In 1997, I married a fellow GSN member and geologist (we actually met in school around the time I first discovered GSN as noted above). Following our wedding, I moved to Nevada. There I worked underground at Newmont's Deep Star, Deep Post, and Chukar Footwall underground mines, again with a group of talented professionals. I also completed a short-term assignment as an exploration geochemist and facilitated a continuous improvement effort at the Twin Creeks Mill. In 2005, the opportunity to be part of the team advancing Cortez Hills presented itself and I joined Placer Dome. Barrick acquired Placer less than a year later and I continue exploring the opportunities at Cortez with the Barrick team.

My family provides a balance to the rigors of work. We enjoy traveling and outdoor adventures among our more typical family pursuits. On occasion, I escape to the Nevada wilderness to enjoy fresh powder and chase elusive deer.

I have been on or presented at numerous GSN fieldtrips and functions, attended the last two GSN-organized symposiums, attend many presentations and social events organized by the local Elko chapter of the GSN, and keep up-to-date and informed by reading the GSN newsletters and symposium volumes. Needless to say, I find being a member an enriching experience. Thanks to all those individuals who have volunteered their time to build and maintain such a positive and progressive organization. And thanks to the many mentors, co-workers, and professional colleagues that I have had the good fortune to get to know through the years.



# GSN BOARD OF DIRECTORS FEBRUARY QUARTERLY MEETING

The quarterly meeting of the GSN Board of Directors was held on February 20 in Reno, Nevada. The purpose of the eleven member Board is to provide the overall direction of GSN, manage our investment funds, provide institutional memory, and promote communication between the GSN "mother-ship" and its three Chapters in Winnemucca, Elko and Las Vegas.

Highlights of the reports from the six Board Committees include the following:

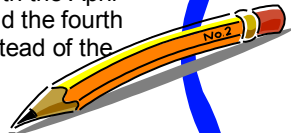
- The Fiscal Committee again reported a net loss in the total value of the GSN Investment Accounts although there was a slight recovery over the previous quarter. Dividends are also lower than projected.
- The Policy Committee led discussions on new procedures for nominating GSN Honorary Members for the Board and the Executive Committee to consider. Final recommendations will be made before the next quarterly meeting in May.
- The Nominating Committee submitted names of candidates to the Board of Directors to fill positions beginning in June for the 2009-2010 Executive Committee, Board of Directors (Class A) and the GSN Chapter organizations. Candidates for the 2009-2010 Executive Committee and the Board of Directors (Class A) will be announced in the April GSN newsletter followed by an electronic ballot sent out to all GSN members during the first week in April. Election results will be announced in May
- The Audit Committee will complete an internal audit of the financial records of the GSN and its Chapters by the next quarterly meeting in May.
- The Symposium Committee represented by Nancy Wolverson submitted a budget and reviewed the status of the planning for the 2010 GSN Symposium. Plans are to hire a secretary for the Symposium in the near future. Office space will be provided by the Nevada Bureau of Mines in their new building at DRI.
- The Foundation Committee reported the Foundation's Treasury increased to \$266K thanks to the successful Christmas raffle and the generous contributions of the GSN membership. The Board approved Roger Steininger to be Chairman of the GSN Foundation for 2009-2010 and expressed their appreciation for his efforts.
- GSN members are encouraged to go to the GSN web site at [www.gsnv.org](http://www.gsnv.org) to learn more about the activities of the GSN and, in particular, the Board of Directors, the Executive Committee, the Foundation, and its Chapters.
- The next Board meeting is scheduled for May 15 in Reno. The Board appreciates input from the GSN members on any issues they want to be discussed or are currently under consideration.

Mark  
your  
Calendar



Due to the Elks Lodge having a prior commitment on April 17th the April GSN meeting will be held the fourth Friday of the month instead of the third Friday

**April Meeting:  
April 24, 2009**



## GSN Newsletter Monthly Advertising Rates

Business Card (3 <sup>1</sup> / <sub>2</sub> x 2")	\$ 50.00
Quarter Page (3 <sup>1</sup> / <sub>2</sub> x 4 <sup>3</sup> / <sub>4</sub> ")	150.00
Half Page (4 <sup>3</sup> / <sub>4</sub> x 7 <sup>1</sup> / <sub>2</sub> ")	300.00
Classified ads (per line) (up to business card size)	10.00

For an advertising form, call the GSN office at 775-323-3500, e-mail: [gsn@gsnv.org](mailto:gsn@gsnv.org), or download the form from the GSN website: [www.gsnv.org/membership.html](http://www.gsnv.org/membership.html). Digital or text ads must be received by the 20<sup>th</sup> of the month to appear in the following month's newsletter.



## HISTORIC NEVADA SANBORN MAPS Now available online at the Delamare Library

516 full-color Sanborn maps of 28 Nevada towns are now available on the historic Nevada in Maps site: <http://www.delamare.unr.edu/maps/digitalcollections/nvmaps/sanborns>

This set includes all identified Sanborn maps of Nevada between 1879 through 1923. These town maps are often the only cartographic documentation of early Nevada towns and reflect the western settlement history of this state, often based on the mining industry. The colors on the map are significant, not specifically for esthetic reasons but because they indicate the nature of the building [frame, brick, stone, etc.] and are an indication of the development of towns in Nevada. The nature of many businesses as well as proprietary names are abundant on these detailed maps.

The presentation explains the nature of these maps and demonstrates the use of historic photos in coordination with the maps. Most maps are fully viewable with JPEG, TIFF and Djvu file versions, in addition to the JPEG2000 default display.

The INVENTORY [on the web site] of all identified Nevada Sanborn maps lists the libraries [within NV and other institutions] who own Sanborn maps and type of map [original, microfilm, online.] Sanborn maps have been available in black and white microfilm in various libraries in NV as indicated in the Inventory. The University of Nevada, Reno also subscribes to an online edition [based on the black & white microfilm] available to Nevada affiliated patrons or from within a university library.

No location owns a complete set of Nevada Sanborn maps in any combination of formats but this online edition offers the first and most complete full-color set available to all via the web.

The Nevada in Maps site also presents other historic series <http://www.delamare.unr.edu/maps/digitalcollections/nvmaps/search.html>

Linda Newman, Geoscience & Map Librarian, project director  
Glee Willis, Digital Projects Librarian  
Vicki Toy-Smith, Metadata Librarian  
Justin Blum, Web Development Librarian

Paper copies of the publications listed above will be available soon through our shopping cart at: <http://www.nbmjg.unr.edu/sales.htm> or you may order *right away* by calling us at (775) 682-8766.

---

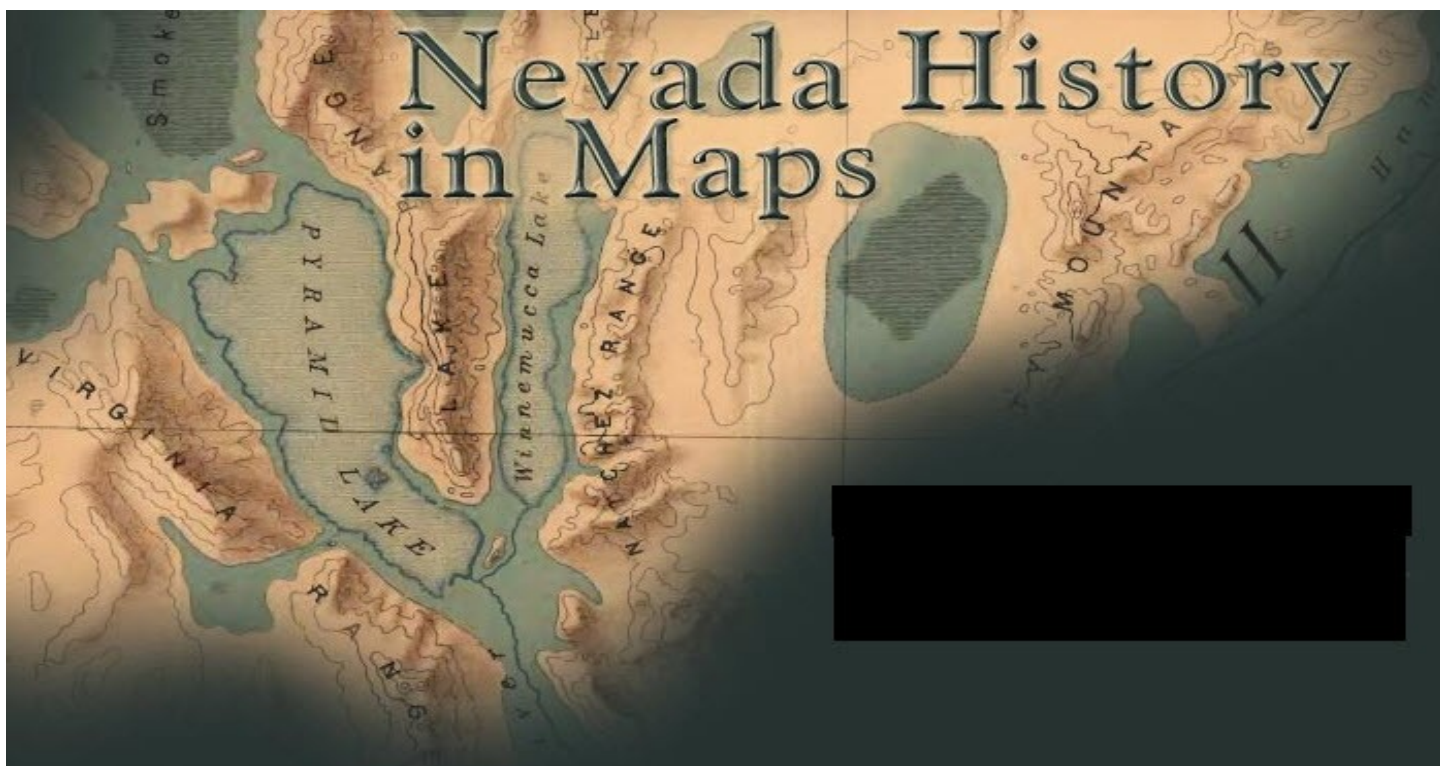
## NEW PUBLICATIONS & MAPS Now available online at the Nevada Bureau of Mines and Geology

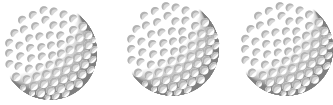
**M167** – Quaternary faults in Nevada, by Craig M. dePolo, scale 1:1,000,000, **\$18.00**, rolled or folded, or **free on the Web** at: <http://www.nbmjg.unr.edu/dox/m167.pdf>

**OF08-3** - Preliminary geologic map of late Cenozoic deposits in the Spirit Mtn. SE Quadrangle, Clark County, Nevada and Mohave County, Arizona, by P. Kyle House, Amy L. Brock, and Philip A. Pearthree, scale 1:24,000, **\$15.00**, rolled or folded, or **free on the Web** at: <http://www.nbmjg.unr.edu/dox/of083.pdf>

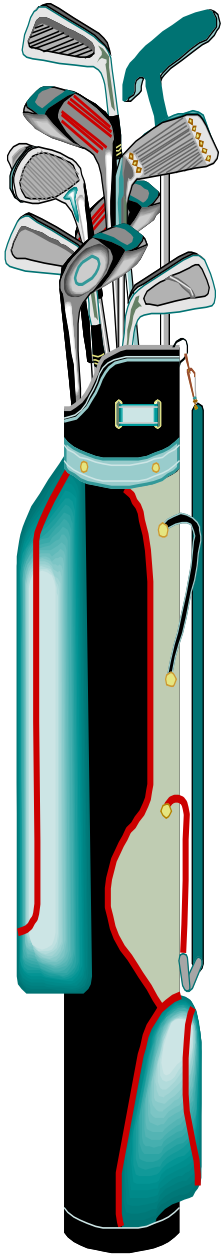
**OF08-5** - Preliminary geologic map of the north half of the Spirit Mtn. NW Quadrangle, Clark County, Nevada and Mohave County, Arizona, by P. Kyle House and James E. Faulds, scale 1:24,000, **\$17.00** for map and 4-page text, or **\$16.00** for map only (OF08-5m), rolled or folded, or **free on the Web** at: <http://www.nbmjg.unr.edu/dox/of085text.pdf> <http://www.nbmjg.unr.edu/dox/of085.pdf>

**OF08-6** - Biennial report of the Nevada Bureau of Mines and Geology, 2008, by Jonathan G. Price, 94 pages, **\$33.00**, or **free on the Web** at: <http://www.nbmjg.unr.edu/dox/of086.pdf>





# Attention Golfers!!



Inspectorate America Corporation is pleased to announce sponsorship of the **GSN Annual Golf Tournament 2009** on Saturday, June 27<sup>th</sup>. Tee time will commence at 1:00 p.m. with a "Shotgun Start" at Lakeridge Golf Course. The tournament is restricted to the first 100 people to enter, so sign up early! Deadline for reservations is Friday, June 19<sup>th</sup>. You may call Kathy at the GSN office (775) 323-3500, fax (775) 323-3599, or e-mail [gsn@gsnv.org](mailto:gsn@gsnv.org) to sign up individually, or as a foursome. A fee of \$35.00 per head that will include golf, dinner, and two drink coupons and \$5.00 per head for those not golfing will be charged. Mulligan's may be purchased at 4/\$20.00 with a limit of four per person. Dinner will follow the tournament and raffle tickets for prizes will be sold at 5/\$20.00 or \$5.00 each. All proceeds raised are to benefit the GSN Foundation. Please join us for a great time and we thank you in advance for supporting the GSN Foundation.

Please provide the following information for each golfer and guest:



## Registration Form

Name: \_\_\_\_\_ Ave. Score: \_\_\_\_\_

Address: \_\_\_\_\_

Phone: \_\_\_\_\_ E-mail: \_\_\_\_\_

Teamed with: \_\_\_\_\_ ++

BBQ Guest Name(s): \_\_\_\_\_

\$35.00 Per golfer  
\$5.00 Dinner charge for non-golfer  
Amount included with this form: \$ \_\_\_\_\_

Paid with Check # \_\_\_\_\_ Visa  MasterCard  Expiration Date: \_\_\_\_\_

Credit Card # \_\_\_\_\_ 3-digit Security Code: \_\_\_\_\_

**Payment must be made by June 19, 2009**

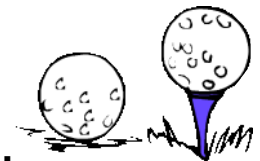
**No refunds after June 19, 2009**

(775) 323-3500, Fax: (775) 323-3599 or mail to GSN office:  
P. O. Box 13375, Reno, NV 89507 or email to [gsn@gsnv.org](mailto:gsn@gsnv.org)

**THANKS TO**

**INSPECTORATE AMERICA CORPORATION**

**For Sponsoring the GSN Annual Golf Tournament - 2009**



**GSN Winnemucca Chapter  
Meeting  
March 11, 2009**

**“The Eocene Conspiracy: What The  
Rocks Don’t Want You to Know”**

Jim E. Essman, Newmont Exploration

In recent years, Carlin-type gold deposits have been spatially, and in some cases temporally, linked with magmatic centers of late Eocene age. As a result a widely accepted genetic model has emerged wherein any gold deposit exhibiting Carlin characteristics must, by definition, be associated with an intrusion of late Eocene age. In cases where a spatial or temporal link to late Eocene magmatism has not been documented the association/age is usually implied. Also in recent years, several workers have documented the seemingly ubiquitous presence of contractional features, such as anticlines and thrust faults, and their role in controlling mineralization in Carlin-type deposits. The contractional features are inherently difficult to date, due to the fact that in most cases the youngest rocks available to determine the structures relative ages are Jurassic. As a result, the role these contractional features played in an assumed Eocene age mineralizing event remains a matter of debate. Never-the-less, thrust faults and folds are important controls. Could it be that contraction and magmatism were penecontemporaneous in Nevada during the Eocene? Perhaps mineralization occurred during the waning stages of a contractional event that transitioned into the onset of magmatism and extension? Could it be that late Cretaceous and early Eocene contraction related to gold mineralization has gone unnoticed because sedimentary rocks that would record this deformation are sparse or absent in most major gold districts, or they have been misidentified? Perhaps we are trying too hard to fit our observations into a model instead of letting them lead us in new directions.

New observations in the northern Piñon range suggest that probable late Cretaceous, and potentially early Tertiary contraction was far more abundant than previously recognized. This talk will examine new field observations, crosscutting relationships and structural data from the northern Piñon range with a focus on the southern terminus of the Carlin Trend; these data suggest that contraction and mineralization may have potentially overlapped in time.



**Become a GSN Member today!**  
Membership Application can be found on the  
GSN website:  
[www.gsn@gsnv.org/membership.html](http://www.gsn@gsnv.org/membership.html)

***Thanks to Saines Environmental  
Hydrogeology for sponsoring the  
Southern Nevada February meeting.***

***Thanks to TonaTec Exploration, LLC  
for sponsoring the  
Elko February meeting.***

***Thanks to Drift Exploration Drilling  
for sponsoring the  
Winnemucca February meeting.***

**WINNEMUCCA CHAPTER**



**BOART  
LONGYEAR**  
Drilling Services

**Marty Dennis**  
Zone Manager

Boart Longyear Company  
www.boartlongyear.com · marty.dennis@boartlongyear.com  
605 Union Pacific Way  
PO Box 2748, Elko, NV 89803  
Main: 775-738-1980 · Mobile: 775-934-7768  
Fax: 775-753-9229



## ACTIVITY UPDATE

Mike Brady, January 2009

Nevada

[www.activityupdate.com](http://www.activityupdate.com)

Allied Nevada Gold Corp. announced that it received the first gold production derived from the start-up of operations at the Hycroft Mine. (reserve = 33,320,000 tons @ 0.020 opt Au proven+probable oxide) *Press Release:* January 6

Atna Resources Ltd. announced that it was notified by Barrick Gold Corp. that Barrick has now spent \$30,000,000 at the Pinson Project thereby earning it a 70% interest. (resource = 2,505,000 tons @ 0.421 opt Au measured+indicated) *Press Release:* January 15

Fronteer Development Group Inc.(51%) announced that recent drill results at the Long Canyon/West Zone Project include 269.4-281 feet @ 0.077 opt Au (LC117C); 256-266 feet @ 0.022 opt Au (LC122C); 141-156 feet @ 0.113 opt Au (LC127C) and 147-202 feet @ 0.127 opt Au (LC130C). *Press Release:* December 29

Fronteer Development Group Inc.(51%) announced that recent drill results at the Long Canyon Project include 227-282 feet @ 0.117 opt Au (LC139C); 287-306 feet @ 0.080 opt Au (LC142C); 177-187 feet @ 0.033 opt Au (LC146C) and 202-217 feet @ 0.017 opt Au (LC148C). *Press Release:* January 26

AuEx Ventures Inc. announced that recent drill results at the West Pequop Project include 10-241 feet @ 0.238 opt Au (WNC-144); 150-160 feet @ 0.018 opt Au (WNC-146); 224-248.5 feet @ 0.026 opt Au (WNC-147) and 430.4-451 feet @ 0.015 opt Au (WNC-148). *Press Release:* January 22

Barrick Gold Corp. announced that a U.S. District Judge declined to grant an injunction regarding the recent approval by the Bureau of Land Management of the Cortez Hills Project. (reserve = 15,620,000 tons @ 0.127 opt Au proven and 128,150,000 tons @ 0.074 opt Au probable) *Press Release:* January 26

Bonaventure Enterprises Inc. announced that recent drill results at the New Pass Project include 320-350 feet @ 0.028 opt Au, 0.17 opt Ag (NP08-10); 440-475 feet @ 0.010 opt Au, 0.32 opt Ag (NP08-11); 80-150 feet @ 0.012 opt Au, 0.16 opt Ag (NP08-12) and 18-96.5 feet @ 0.015 opt Au, 0.18 opt Ag (NP08-24C). (resource = 11,500,000 tons @ 0.023 opt Au inferred) *Press Release:* January 6

Midway Gold Corp. announced that recent drill results at the Spring Valley Project include 386.4-445 feet @ 0.023 opt Au (SV08-396C); 523.2-567.3 feet @ 0.011 opt Au (SV08-397C); 260-285 feet @ 0.071 opt Au (SV08-398C) and 665-704 feet @ 0.020 opt Au (SV08-439C). (resource = 50,600,000 tons @ 0.020 opt Au inferred) *Press Release:* January 19

Desert Gold Ventures Inc. (50%) announced that recent drill results at the Goldbanks Project include 445-460 feet @ 0.230 opt Au (GB08-01); 755-774 feet @ 0.161 opt Au (GB08-02); 477-487 feet @ 0.050 opt Au (GB08-03) and 629.5-670 feet @ 0.013 opt Au (GB08-06). (resource = 28,450,000 tons @ 0.020 opt Au inferred) *Press Release:* January 21

Quaterra Resources Inc. announced that based on recent drill results at the MacArthur Project, resources aggregate 57,360,000 tons @ 0.239% Cu measured+indicated and 75,800,000 tons @ 0.283% Cu inferred. (was 29,000,000 tons @ 0.28% Cu inferred) *Press Release:* January 26

Golden Predator Mines Inc. announced that recent drill results at the Adelaide Project include 25.9-40 feet @ 0.047 opt Au, 0.95 opt Ag (GPAD01); 145.6-175 feet @ 0.066 opt Au, 0.57 opt Ag (GPAD02); 280-294 feet @ 0.450 opt Au, 0.51 opt Ag (GPAD03) and 175-215 feet @ 0.121 opt Au, 1.19 opt Ag (GPAD07). *Press Release:* January 6

International Bethlehem Corp. announced that it terminated its interest in the Monte Cristo Project of Gold Summit Corp. (resource = 364,100 tons @ 0.190 opt Au inferred) *Press Release:* January 15

Staccato Gold Resources Ltd. announced that recent drill results at the South Eureka Project include 439-492 feet @ 0.011 opt Au (BHSE-07); 275-400 feet @ 0.028 opt Au (BHSE-21); 496.5-515.5 feet @ 0.032 opt Au (BHSE-25C) and 110-215 feet @ 0.018 opt Au (BHWF-01). (resource = 4,753,000 tons @ 0.020 opt Au measured) *Press Release:* January 21



The GSN Office will be moving, from UNR, in April 2009 to  
NBMG's Great Basin Science Sample and Records Library at

The Desert Research Institute Campus

2215 Raggio Parkway, Unit A

Reno, Nevada 89512-1095



## \*\*\*CALL FOR PAPERS\*\*\*

### GSN 2010 SYMPOSIUM

**\*\*Draft Abstracts due no later than April 30, 2009\*\***

#### **GSN 2010 SYMPOSIUM**

**May 14-22, 2010**

**John Ascuaga's Nugget Hotel and Casino, Reno-Sparks, Nevada**

GSN invites contributions for oral, poster, and core shack presentations. The Sixth Symposium's focus will be **Great Basin Evolution and Metallogeny** through descriptive accounts of ore deposits, new ideas on deposit formation, and innovative methods of discovery.

Oral presentations require abstracts and a written paper to be peer-reviewed and published in the Symposium Proceedings following the meeting. Poster presentations require abstracts.

**Draft abstracts up to 500 words should be submitted no later than April 30, 2009.** Written papers should be 2,000 to 20,000 words with figures and tables. **Draft manuscripts due November 30, 2009.** **Information**

**for contributors:** [http://www.gsnv.org/symposium/author\\_guidelines/guidelines.aspx](http://www.gsnv.org/symposium/author_guidelines/guidelines.aspx)

Submit abstracts on-line: [www.gsnv.org/symposium](http://www.gsnv.org/symposium) or via e-mail: [technicalsessions@gsnv.org](mailto:technicalsessions@gsnv.org)

#### **TECHNICAL PROGRAM**

**SUN-WED, MAY 16-19**

##### **Focus Topics:**

- Rumors from the Bush – Great Basin Exploration Update
- New Mine Development
- Tertiary Magmatism and Metallogenesis
- Geology and Tectonics of Nevada
- Regional Metallogeny and Mineral Belts
- Active or Recent Gold Systems
- Intrusion-Related Deposits
- A Stroll Down Walker Lane – Geology and Ore Deposits
- Volcanic-Hosted Precious-Metal Deposits
- Carlin-Type Gold Deposits: Great Basin and Beyond
- Controversies in Great Basin Geology
- Student Research—Best Student Paper Award
- Environmental/Regulatory Issues
- Geothermal Resources
- Case Histories of Great Basin Discoveries
- Exploration – International
- Exploration –Americas
- Exploration Technologies

#### **FIELD TRIPS**

##### **Pre-meeting:**

- Carlin-Type Gold Deposits for Geologists
- Epithermal Deposits of Northern Nevada
- Porphyry-Related Deposits-Eastern Nevada
- Industrial Mineral Deposits, Southern Great Basin

##### **Post-meeting:**

- Carlin-Type Gold Deposits for Non-Geologists
- Recent Advances in Carlin-Type Deposits, Nevada
- Epithermal Deposits of Central Nevada
- Porphyry-Related Deposits of Western Nevada
- Modern and Ancient Geothermal Systems

#### **SHORT COURSES**

- Society of Economic Geologists-Gold Workshop
- Epithermal Deposits: Occurrences, Models, Exploration Criteria
- Structural Systematics: Exploration Applications
- Fundamentals of Canadian NI 43-101
- Introduction to Carlin-Type Gold Deposits
- Porphyry Copper Occurrences, Models, and Exploration Criteria
- Molybdenum Deposits and Exploration Criteria
- Database Management, Geostatistics, GIS, & Modeling
- Sample Collection, Prep, and Analyses: Methods and Advice
- Isotopes and Exploration: Bringing the Esoteric into the Mainstream

#### **Co-Hosts:**



**Geological Society of Nevada  
Spring Field Trip  
May 8-10, 2009**

**Diverse Gold Deposits of the Osgood Mountains  
and Humboldt Range, North-Central Nevada:  
Pinson-Getchell-Turquoise Ridge  
and Spring Valley-Lincoln Hill-Wilco**

- Friday, May 8th:** Evening lectures by Karl Marlowe; overnight in Winnemucca.
- Saturday, May 9th:** Getchell Gold Trend: Pinson, Getchell, and Turquoise Ridge mines; Evening lectures by John Muntean, Jean Cline, Tony Longo and students on Getchell (Overnight in Winnemucca).
- Sunday, May 10th:** Lincoln Hill and Willard-Colado projects (Bill Howald and Radu Conelea, Rye Patch Gold) and Spring Valley project (Alan Branham, Midway Gold, and Barrick Gold).

**We are looking for field trip sponsors, if you would be interested in  
being a sponsor for the Spring 2009 Field Trip  
please contact Kathy at the GSN office**



**Spring 2009 Field Trip Sign Up**

Name: \_\_\_\_\_

Daytime Phone: \_\_\_\_\_

Company: \_\_\_\_\_

Address: \_\_\_\_\_

\_\_\_\_\_

Email: \_\_\_\_\_

Person to contact in case of emergency:

Name: \_\_\_\_\_

Phone: \_\_\_\_\_

Lodging: Single \_\_\_\_\_ Double \_\_\_\_\_

Double roommate: \_\_\_\_\_

MEMBER COSTS: Double Room \$275.00  
Single Room (Limited Number) \$325.00

\*NON-MEMBER COSTS: Double Room \$325.00  
Single Room (Limited Number) \$375.00

Amount included with this form: \$ \_\_\_\_\_

Paid with Check Number: \_\_\_\_\_

Visa:  MasterCard:  Expiration date: \_\_\_\_\_

Credit Card # \_\_\_\_\_

3-digit security code (back of credit card): \_\_\_\_\_

Signature: \_\_\_\_\_  
*(as it appears on card)*

Payments must be made by May 1, 2009  
No refunds after May 1, 2009

(775) 323-3500, Fax: (775) 323-3599 or mail to GSN office:  
P. O. Box 13375, Reno, NV 89507 or email to [gsn@gsnv.org](mailto:gsn@gsnv.org)

\*Non-members are encouraged to become members of the GSN for \$50 annual dues in order to take advantage of the reduced rate.





**JOSEPH R. ANZMAN**  
Exploration Geophysicist

- consulting
- Interpretation
- project management
- geophysical surveys
- domestic & foreign

P.O. Box 370526  
Denver, Colorado 80237

(303) 337-4559  
telephone/fax

geophjoe@comcast.net



**ENVIRONMENTAL SERVICES  
FOR THE MINING INDUSTRY**

- Baseline Studies
- Environmental Permitting
- Monitoring & Compliance
- Reclamation & Closure Plans
- Investigation & Remediation

**Elko Location**  
775-738-8766

www.jbrenv.com

Reno and Salt Lake City locations



At Timberline Drilling, Inc. we have a fleet of drills to meet every need. We specialize in both underground and surface core drilling in support of active mining operations, mine development projects and exploration.

Timberline Drilling, Inc. - Corporate  
Martin Lanphere: 208.755.1938  
mlanphere@timberline-drilling.com

Timberline Drilling, Inc. - Mexico Operations  
Paul Elloway: 52.662.151.0426  
pelloway@wwemexico.net

Timberline Resources Corp.  
Randy Hardy: 208.664.4859  
hardy@timberline-resources.com

Visit Us At:

[www.timberline-drilling.com](http://www.timberline-drilling.com)

for detailed information on all of our available drill rigs



**John Doucette**  
Tramp Geologist

International experience in exploration and mining

- Geology and ore deposit mapping
- Core and cutting logging
- Computer assisted mapping
- Petrography - Geochemistry - GIS - GPS
- Database construction and analysis
- Core photography - rock density measurements
- Project management

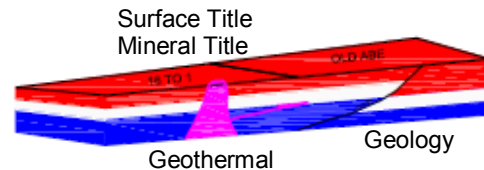
Have Hammer Will Travel

doucettj@gmail.com

**G.I.S. Land Services**

**Greg Ekins** M.S. R.P.L. #32306 President  
Mineral Landman - Commissioned Abstractor  
"From Courthouse Records to Final Map"

Due Diligence, Acquisition, Wind Energy  
Solar Energy, Geothermal Title, National  
Instrument (NI)43-101 Title Review



A professional firm of  
Landmen, Geologists, Draftsmen and Technicians  
Providing Abstracts of Title, Land Status and  
Exploration Geology Services  
Utilizing AutoCad - ArcMap - MapInfo - PowerPoint  
[www.gislandservices.com](http://www.gislandservices.com)

5365 Mae Anne Drive, Suite B 14A  
Reno, NV 89523

Ph: 775-746-8803 Fax: 775-746-8802

Email: [greg@gislandservices.com](mailto:greg@gislandservices.com)

**GIS Technologies**

Dennis Geasan - Geologist, GIS Consultant

**GIS and Database Consulting**

- GIS Database Design & Compilation
- ArcView Training
- GIS Web Map Applications
- SQL Server & Access Databases
- acquire Drill Database Compilation & Design
- Custom Programming and Web Design

775-750-1619

dgeasan@gmail.com <http://gistechnology.biz>  
Alaska, Colorado, Nevada



# North American Exploration

Providing service to the Mining industry since 1964



With over 45 years of experience,  
we will complete any exploration project,  
Anytime! Anywhere!



**801-544-3421**

North American Exploration, Inc.  
447 North 300 West, Suite #3  
Kaysville, Utah 84037  
Email: [nae@nae-xploration.com](mailto:nae@nae-xploration.com)

## MapInfo / Discover Training

For Geologists

### Toronto

Feb 23-24 Introduction to Map-Info / Discover for Geologists

Feb 25-26 Intermediate MapInfo / Discover for Geologists

Feb 27 Discover 3D

### Reno

Mar 16-17 Introduction to Map-Info / Discover for Geologists

Mar 18-19 Intermediate MapInfo / Discover for Geologists

Mar 20 Discover 3D

800 663-1334 • 520 744-4457

[www.geografxworld.com/training.htm](http://www.geografxworld.com/training.htm) • [info@geografxworld.com](mailto:info@geografxworld.com)

Sponsored by: Tetrad Computer Applications Inc. & GeoGRAFX GIS Services

## Exploration & Mining Analytical Services



### INSPECTORATE

#### INSPECTORATE AMERICA CORP.

605 BOXINGTON WAY, SUITE 101  
SPARKS, NV 89434-8929

Phone: 775.359.6311 \* Fax: 775.359.2944  
<http://www.inspectorate.com>

**Carmen Arbizu-Business Development Mgr**  
[Carmen.Arbizu@Inspectorate.com](mailto:Carmen.Arbizu@Inspectorate.com)  
Mobile: 775.219.8657

**Robert Wasiliew-General Mgr**  
[Robert.Wasiliew@Inspectorate.com](mailto:Robert.Wasiliew@Inspectorate.com)  
Mobile: 775.741.0015

**Dave Williams-Vice President**  
[Dave.Williams@Inspectorate.com](mailto:Dave.Williams@Inspectorate.com)  
Mobile: 775.848.8025

**Chuck Whipple-Quality Assurance/Client Service Mgr**  
[Chuck.Whipple@Inspectorate.com](mailto:Chuck.Whipple@Inspectorate.com)  
Mobile: 775.830.4242

**MINIMIZING RISK EVERY DAY**  
**ISO 9001:2000 Certificate #30406**



## ALS Laboratory Group

ANALYTICAL CHEMISTRY & TESTING SERVICES



### Mineral Division - ALS Chemex

ALS Chemex Mineral Laboratory group is pleased to announce our MOVE to a new and larger analytical facility. Our new Laboratory will feature expanded capacity for sample preparation, fire assay, and analytical departments to meet the needs of the mining and exploration communities.

Our new Laboratory is located 2 blocks east of Rock Blvd on Energy Way, just east of the Airport small plane depot.

ALS Laboratory Group  
Mineral Division - ALS Chemex

4977 Energy Way  
Reno, Nevada 89502

Phone: 775 356-5395  
Fax: 775 355 -0179

[www.alschemex.com](http://www.alschemex.com)

Sample deliveries are now being accepted at this location.

Please come by to visit and tour the new lab at your convenience.

**Mary Doherty, USA Director**  
**Mary Stollenwerk, USA Client Services**  
ALS Laboratory Group  
Mineral Division - ALS Chemex

*Right solutions....  
....Right partner*



## Leaders in Deep Exploration

### Global Geophysical Services

**Surveys:** IP/Resistivity, EM, Gravity, MT, TEM, CSAMT, Magnetics

**Consulting:** 2D & 3D Inversion, Project Design, Modelling

### Deep Earth Imaging Technology



**Minesite Imaging:** Exploration, Delineation, Condemnation

[www.QuantecGeoscience.com](http://www.QuantecGeoscience.com) 1.775.827.2611

Canada • USA • Botswana • Peru • Chile • Argentina • Australia





**LET US  
FIND YOU OFFICE  
GOLD!**



**COMMERCIAL REAL ESTATE  
EXPLORATION SERVICES**

We can do the prospecting for you when the time comes to locate your new facility or office. Our locating service is free of charge and includes our expertise and in-depth knowledge of the local market. Call us today and tell us what you're looking for.

775.851.9500 | 775.851.9551 (FAX)  
9533 GATEWAY DRIVE, SUITE B, RENO, NV 89521  
WWW.TRINITYCOMMERCIAL.COM

*Jo Beth Allen*  
**Professional Graphics**

*CAD Drafting/Geologic Data Maps  
Digitizing/Presentation Graphics  
PowerPoint/Plotting/Printing  
Geologist*

1055 Joshua Drive Phone: 775-324-7960  
Reno, Nevada 89509 Fax: 775-324-7583  
jobeth@yellowsb.net



Fire Assay, ICP-OES/MS,  
XRF, LECO, Custom Prep,

Chris Ioannakis, Managing Director, Analytical Services

**Corporate Office**

1500 Glendale Avenue  
Sparks, NV USA 89431-5902  
Telephone: (775) 356-0606  
Fax: (775) 356-1413

**Elko Office**

2320 Last Chance Road  
Elko, NV USA 89801-4852  
Telephone/Fax : (775) 738-9100

E-mail: [AALADMIN@aallabs.com](mailto:AALADMIN@aallabs.com)  
Website: [www.aallabs.com](http://www.aallabs.com)



Western Recon and Mineral Exploration Inc.  
*Claim Staking / Soil Sampling / Exploration Services*

Gary Castagne 775-250-4879 gmcastagne@gmail.com  
John Fernandez 775-815-2587 nvjfernandez@yahoo.com



**Carlin Trend Mining  
Supplies & Service**

[www.carlintrend.com](http://www.carlintrend.com)

369 5th St., Elko, NV 89801  
(775) 778-0668, Fax: (775) 778-0687, [carlintrend@frontiernet.net](mailto:carlintrend@frontiernet.net)

Geological Consulting - Claim Staking - Soil Sampling  
Geology & Drafting Supplies - AutoCad & GIS  
Temporary Employees In All Fields

**MINERAL EXPLORATION SERVICES**

**SOIL SAMPLING  
CLAIMSTAKING  
PROPERTY EVALUATION  
MINE HAZARD FENCING**

5655 Riggins Ct., #15, Reno, NV 89502  
Tel: (775) 954-1082 Fax: (775) 829-6882  
email: [day@mineralexploration.com](mailto:day@mineralexploration.com)

**HARD ROCK WHEELS, INC.**  
4WD Pickup Rentals

Howard J. Adams  
14756 Pine Knolls Lane  
Reno, Nevada 89521  
(775) 852-2622  
Fax (775) 852-2075

Taiga Ventures  
2700 S. Cushman St.  
Fairbanks, Alaska 99701  
(907) 452-6631

[hardrockwheels@yahoo.com](mailto:hardrockwheels@yahoo.com)



# Big Sky Geophysics

Clark Jorgensen, M.Sc.  
Geophysicist

*Field Work  
Processing  
Interpretations*

P.O. Box 353  
Bozeman, MT 59771  
USA

Phone: (406) 587-6330  
Fax: (406) 587-6394  
Mobile: (406) 580-9718  
clark@bigskygeo.com

**For more details, my background, and case studies,  
visit my webpage at [www.bigskygeo.com](http://www.bigskygeo.com)**

## T&T EXPLORATION LLC

CLAIM STAKING SAMPLING MAPPING GPS

**KIP TONKING**

GEOLOGIST

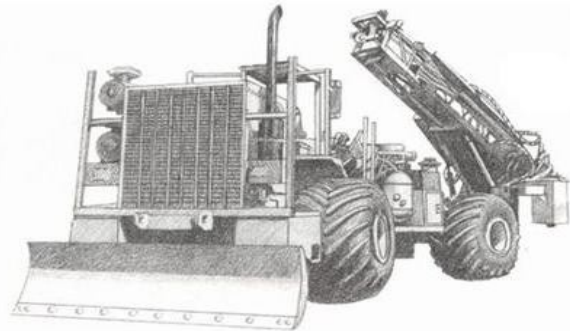


P.O. Box 6945  
Incline Village, NV 89452

Phone: (775) 831-3471  
Cell: (775) 750-3663  
Fax: (775) 831-3471  
Res: (775) 831-3470  
ktonking@msn.com



**DIVERSIFIED DRILLING, LLC**



Providing Drilling Services to the  
Mining/Metals Industry Since 1980

3650 Grant Creek Road  
Missoula, Montana 59808  
Ph: (406) 542-1010 Fax: (406) 542-5065  
[www.diversifieddrilling.com](http://www.diversifieddrilling.com)

# RENT A PIMA!!

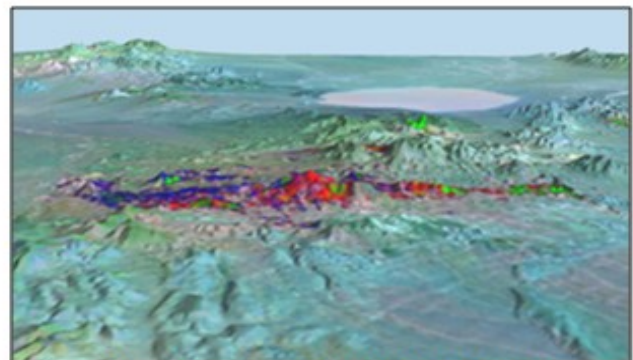


**IDENTIFY and MAP ALTERATION  
MINERALS IN THE FIELD and CORE**

*CONTACT US FOR Rentals and Services*

**Spectral International, Inc**  
303 403 8383 [pusa@rmi.net](mailto:pusa@rmi.net)  
[www.specmin.com](http://www.specmin.com)

## EXPLORATION with ASTER



*Alteration Image, Goldfield, Nevada*

- **CUSTOM CORRECTED DATA**
- **ALTERATION IMAGERY**
- **EXTENSIVE GLOBAL ARCHIVES**

[WWW.ASTERIMAGES.COM](http://WWW.ASTERIMAGES.COM)  
email: [pusa@rmi.net](mailto:pusa@rmi.net)  
[dwc@overhill-imaging.com](mailto:dwc@overhill-imaging.com)

# GEOLOGICAL SOCIETY OF NEVADA



gsn@gsnv.org • www.gsnv.org  
 Telephone (775) 323-3500 Fax (775) 323-3500  
 Post Office Box 13375  
 Reno, NV 89507  
 USA

NON PROFIT  
 ORGANIZATION  
 U.S. POSTAGE  
 PAID  
 RENO, NV  
 PERMIT NO. 931

PAID ADVERTISEMENT

## *Barranca Diamond Core Saws and Blades*

### **BD-2000 Series Wet Cutting Core Saws**

These precision built saws are designed for rapid and accurate sawing of exploratory core specimens. The integral core holder provides for rapid and safe cutting of cylindrical core samples. Adjustable height cutting head accommodates specimen sizes between 1" and 5" in diameter. Available with gas (part# 026301) or electric (part# 02630) motor.



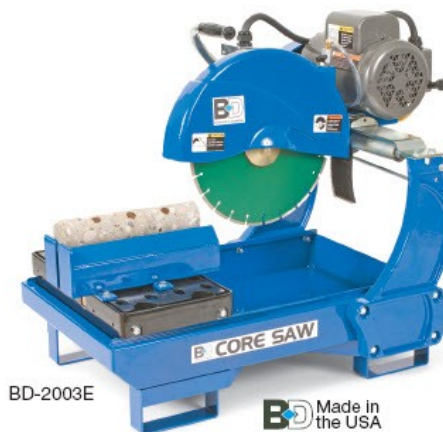
BD-62Q

For wet cutting of quartz, volcanic rock and marble



BD-62P

For wet cutting of porphyry granite and other hard materials



BD-2003E

**BD** Made in the USA

### **14" Segmented Rim Blades**

Blade	Diameter	Width	Arbor	Part#
<b>BD-62P</b>	14" (356mm)	.095	1"	02556A
<b>BD-62Q</b>	14" (356mm)	.125	1"	02556



988 Packer Way, Sparks, NV 89431  
 Phone: (775) 786-3003 | Fax: (775) 786-3813 | www.Lmine.com