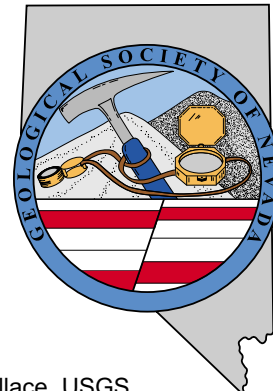


GSN NEWSLETTER



May 2006, Vol. 21, No. 5

PRESIDENT

Dieter Krewedl

Krewedl Mineral Exploration
dkrewedl@usamedia.tv

VICE PRESIDENT

Ellie Davie Leavitt

Western Energy Development Corp.
zoracdavie@aol.com

SECRETARY

Leslie Olmstead

Agnico-Eagle (USA) Limited
lolmstead@agnico-eagleusa.com

TREASURER

Camille Prens

Mine Development Associates
cami@mda.com

MEMBERSHIP CHAIR

Greg McN. French

Consulting Geologist
GMcNFrench@aol.com

PUBLICATION CO-CHAIRS

Elizabeth A. Zbinden

Round Mountain Gold Corp.
E_Zbinden@geology.reno.nv.us

Ruth Carraher

Gold Summit Corp.
racarraher@goldsummitcorp.com

OFFICE MANAGER

Laura Ruud

gsn@mines.unr.edu

CALENDAR OF GSN EVENTS

**May 10
Wednesday**

WINNEMUCCA CHAPTER MEETING. Speaker: Alan Wallace, USGS. Title: "Late Cenozoic Landscape Evolution in Northeastern Nevada and its Predictive Implications for Mineral Deposits and Ground Water". The Martin Hotel, W Railroad and Melarkey Streets. Drinks at 6:30 pm, presentation at 7:00 pm. Sponsored by **Baroid Industrial Drilling Products**. Contact Kim Craig, Chapter President, for more info, 775/529-5001 x1340, kcraig@barrick.com.

**May 18
Thursday**

ELKO CHAPTER MEETING. Speaker: Jean Cline, UNLV Professor-Dept of Geoscience. Topic: to be announced. Western Folklife Center, Elko, Nevada. Social hour begins at 6:00 pm, talk at 7:00 pm. Contact: John Watson, Chapter President, for more info: 775/738-2062, jwatson@barrick.com.

**May 19
Friday**

GSN MEMBERSHIP MEETING. Speaker: Eric Struhsacker, AuEx Ventures. Title: "Carlin-Style Gold Prospects of the Pequop Project, Elko County, Nevada". Reno Elks Lodge, 597 Kumle Ln, Reno, NV. Drinks at 6 pm, dinner at 7 pm, talk at 8 pm. Contact Laura Ruud for reservations, 775/323-3500, gsn@mines.unr.edu.

**May 20
Saturday**

Winnemucca Chapter Field Trip to Goldbanks, Big Mike, Tobin Range Fault Scarp and the Dixie Valley Geothermal Power Plant. Fee is \$20.00. Interested parties can sign up by contacting Kim Craig at 775-529-5001 ext. 1340, kcraig@barrick.com, or Fred Breit at 775-635-4979, fred.breit@newmont.com.

No Meeting

SOUTHERN NEVADA CHAPTER. Officer elections by email ballot. Contact Robyn A. Howley, Chapter President, robynowley@yahoo.com for more information.

June 10-11

GSN Spring Field Trip (Saturday and Sunday). See Registration form on page 9.

**July 15
Saturday**

GSN Golf Tournament – sponsored in full by **Eklund Drilling Company, Inc.!** Registration form on page 12 or contact Laura at the GSN Office to sign up. ○ ○ ○ ○

GSN Newsletter is published monthly except June and July

Geological Society of Nevada, PO Box 13375, Reno, NV 89507 USA, 775/323-3500, www.gsnv.org

Office location: Laxalt Mineral Research Center, Rm 266, UNR. Hours: Mon thru Fri, 1-4 pm

FROM THE PRESIDENT

Dieter Krewedl, *GSN President 2004-2006*

The April GSN meeting was extra special. Not only did we get a great update on Atna's Pinson underground project by Bill Stanley, but also Dr. Larry Larson and Joe Tingley were presented with the GSN **Honorary Membership** during the meeting. This award, which has been given to only 17 persons in the almost 50 year history of the GSN, is presented to members who have made outstanding contributions to the advancement of the geological sciences in Nevada. Larry is Emeritus Professor at the

continued on page 2

MAY MEETING SPONSOR



Enviroscientists, Inc.

4600 Kietzke Lane, Suite C 129, Reno, Nevada 89502

Phone: (775) 826-8822 Fax: (775) 826-8857

**Notices, Plans of Operations,
Cost Estimates, TRI, Biological Surveys,
Air Quality Permits & Audits**

Info@enviroincus.com

www.enviroincus.com



News and Announcements

FROM THE PRESIDENT

continued from page 1

Mackay School of Mines and Joe is Economic Geologist Emeritus at Nevada Bureau of Mines & Geology. Both men are truly remarkable members, who well deserve this recognition and honorable status among their peers. You can read more about each man's accomplishments and contributions to Nevada geology on pages 10 and 11.

Voting for officers on the 2006/2007 GSN Executive Committee and two board members for a three year term on the GSN Board of Directors was made available to all GSN members either by electronic or postal mail during April. Instead of having a voice vote from just the members attending the May GSN meeting, 223 members from throughout the Society voted almost unanimously to approve the proposed ballot. Please read the results of the election for more information on page 8.

Speaking of GSN officers and directors, the GSN has been guided this year by an excellent group of volunteers. **Ellie Leavitt** as Vice President ran a great Fall field trip and the Spring field trip is shaping up to be of equal quality. **Leslie Olmstead** as Secretary has been a meticulous taker of the minutes of the Executive Committee meetings, which is no small feat when Robert's Rules breaks down and the President loses order. **Cami Prenn** has really gone above and beyond as Treasurer, allowing us to keep a tight track on our finances. **Greg French** as Membership chair has helped keep the membership numbers at a high level and organized putting together the GSN directory. **Elizabeth Zbinden** and **Ruth Carraher** as Publications co-chairs have edited, organized booth sitters and helped with the sale of our publications. Both ladies are retiring at the end of this year after a combined 7 years of being Publications co-chair. We all thank them for their dedication and service to the GSN. **D.D. LaPointe** and **Rachel Dolbier** as co-chairs of the Education Committee continue to make a real contribution to the local community as well as GSN by raising money with the most successful annual Christmas raffle ever. **Mario Desilets** as Website chair keeps the website in good working order. Thanks to Mario, who is also retiring after four years as website chair.

I also want to thank the 11 members of the GSN **Board of Directors** for their efforts. The Board was established this year, which was a major accomplishment. The Board of Directors has already helped make the GSN a better Society by providing improved communication, guidance and historical continuity.

The support staff also does a tremendous job for the GSN and needs to be thanked. A major highlight this year was the re-hiring of **Laura Ruud** as the GSN Office

Manager and Bookkeeper. Laura has great historical knowledge and brings a high degree of professionalism to the GSN. Laura is the glue that binds it all together and the GSN is fortunate to have her. **Raye Buckley** is an extremely conscientious and capable typographer, who produces the newsletter and membership directory.

The final GSN dinner meeting for the 2005/2006 fiscal year will be on May 19th. **Eric Struhsacker** with **AuEx Ventures** will discuss the geology and exploration history of the Pequop property. The Long Canyon discovery on the Pequop property contains high-grade Carlin style mineralization and is located southeast of Wells, Nevada outside of any known trends. This early stage exploration project could be one of the most significant new discoveries in Nevada and may be the beginning of a new gold district. It has stirred up a lot of excitement in Nevada. Thanks to Rich DeLong and Opal Adams of **Enviroscientists** for sponsoring the social hour during what should be an exciting May meeting.

The GSN will remain active this summer beginning with the **GSN Spring field trip** on June 10th & 11th. It will be based out of Lovelock, Nevada and will review the geology of the Seven Troughs area. This will be GSN's first field trip to the Seven Troughs area and it should be a perfect time to see some interesting geology. Ellie Leavitt has lined up experts to lead the tour including Don Hudson, John Muntean, Richard Bedell, Randy Moss, Mike Brady and David John. More details and a signup sheet are provided on page 9 in this Newsletter.

Also, Bob Felder is organizing the annual **GSN golf tournament** on July 15th, which is being sponsored by Eklund Drilling. Please register for this free tournament as soon as possible. And last but not least, **Doug Silver** will give us his annual words of wisdom on August 24th. The Silver Summer Series is a great social event and Doug always gives us some interesting perspectives on mineral exploration.

This will be the last time you will see my name under this column after serving as your President for the past two years. I have thoroughly enjoyed working with the officers, committee chairs and Board of Directors, and will miss the fun. As I have often said at our dinner meetings, the GSN is indeed the best damn geological society, period. Thanks for the honor of allowing me to be your President.



Thanks to GEOTEMPS for hosting the April meeting.

GSN April 21, 2006 Membership Meeting

Date: Friday, May 19, 2006

Time: Social-6:00, Dinner-7:00, Meeting-8:00

Reservations: 775/323-3500; fax 323-3599,
e-mail gsn@mines.unr.edu

Deadline: Reserve by 11 am Thursday, May 18th

Location: Elks Lodge, 597 Kumle Lane, Reno, NV

Directions: Across (W) from the Reno-Sparks Convention Center (S Virginia St), behind the Les Schwab Tire Center

Speaker/topic: Eric Struhsacker, AuEx Ventures, Inc.
See abstract below.

CARLIN-STYLE GOLD PROSPECTS OF THE PEQUOP PROJECT, ELKO COUNTY, NEVADA

Eric Struhsacker, Richard Bedell, and Ron Parratt, AuEx, Inc., Reno, Nevada

The Pequop project explores a Carlin-type gold system located in the Pequop Mountains of Elko County in northeastern Nevada. Pequop lies approximately 23 miles by road southeast of the town of Wells, Nevada and approximately 90 miles due east of the Carlin Trend.

Little evidence exists of gold exploration occurring in the Pequop Mountains prior to 1994. In that year, Pittston Nevada Gold Company, LLC (PNGC), while conducting a regional dry stream sediment sampling program, obtained Bulk Leach Extractable Gold (BLEG) values an order of magnitude greater than regional background along the western flank of the Pequop Mountains. Follow-up sampling yielded multi-ppm gold values in grab samples from a jasperoid outcrop located more than two miles upstream. Subsequent ridge and spur, rock chip, and soil grid sampling supported by geologic mapping defined several target areas on the western side of the range, now known collectively as the West Pequop area. During the period of 1994 to 2000, PNGC drilled 46 reverse circulation and core holes on three of the targets at West Pequop. Fourteen of the holes contained intersections exceeding 20 feet of 0.03 ounces per ton with the highest grade intercept being 20 feet @ 0.47 ounces per ton near the discovery outcrop. Additional district-wide sampling and mapping in 1999 and 2000 documented another target area on the eastern side of the Pequop Mountains near Long Canyon. Gold values exceeding 100 ppb from a soil grid at Long Canyon define a northeast-trending anomaly about 4400 feet long. PNGC drilled seven holes along the northeastern third of the anomaly in 2000 to test a combination of stratigraphic and structural controls. Only one of the holes intersected significant mineralization, 70 feet of 0.081 ounces per ton. Concurrent road cut sampling by PNGC yielded two well-mineralized intervals, the best being 52 feet of 10.6 ppm gold.

AuEx, Inc. acquired PNGC and its Pequop property in 2005 and completed seven RC holes in the northeastern part of the Long Canyon soil anomaly. Five of these holes yielded intercepts exceeding 40 feet of 0.1 ounces per ton and all intersected anomalous gold mineralization. The new holes combined with the drill intercept and road cut intervals obtained in 2000 appear to define a linear, northwest-dipping tabular zone. Systematic sampling of road cuts documented surface exposures of the gold-bearing zone in five additional locations along strike. The drill holes and road cuts test about 1200 feet of the 4400-foot long soil anomaly. AuEx also conducted drilling at the Acrobat and Juggler targets in the West Pequop area, confirming the presence of shallowly-dipping stratabound bound mineralization in the discovery area. Additional holes suggest continuity of mineralization between the Acrobat and Juggler areas along a strike-length of 1200 feet. Earlier drilling by PNGC indicates that a steeply-dipping or plunging zone of high grade mineralization lies beneath the stratabound zone. Defining the shape and extent of this zone will require additional work.

Gold mineralization defined to-date at the Pequop project appears to be Carlin-Type. Gold deposits occur in Upper Cambrian to Lower Ordovician age silty carbonate sedimentary rocks, in association with anomalous arsenic, antimony, and mercury. Base metal values are generally low. Marble and phyllitic siltstone units present in the sequence on the western side of the Pequops reflect the effects of regional metamorphism, whereas host rocks of the Long Canyon prospect consist of unmetamorphosed limestone and dolomite. The host rocks display partial decalcification, hematitic and jarositic limonite, and, locally, jasperoid silicification along bedding planes and in stratabound solution breccias. Jasperoid development is more extensive at West Pequop than at Long Canyon. Also, gold occurs in fault breccia zones that appear to be cut by barren faults interpreted to be associated with Basin and Range faulting.

A small collection of polished sections shows that gold occurs as micron-sized grains at both West Pequop and Long Canyon. SEM analysis has verified the presence of both gold and electrum. Gold occurs in vugs in jasperoid at both prospects. However, gold also occurs adjacent to fine fractures in calcite veinlets at Long Canyon, an occurrence not fully understood at this time. Thin sections from the West Pequop area document at least three stages of jasperoid

continued

ABSTRACT *continued from page 3*

development including a partial replacement of the host rock along relict bedding and foliation planes. A set of quartz veinlets thought to be associated with gold mineralization cuts the replacement quartz and is in-turn cut by another set of quartz veinlets that appear to be barren. A set of late calcite veins cuts the jasperoid stages.

Eric graduated from Dartmouth College in 1973 with a B.A. in geology and from Montana State University in 1976 with an M.S. in geology. He has worked as a geologist exploring for precious and base metals and geothermal resources since 1976 for various companies including Exxon Minerals, the Earth Science Laboratory at the University of Utah Research Institute, Chevron Resources, Santa Fe Pacific Gold, Homestake Mining, and, presently, AuEx, Inc. Eric has experience in sediment- and volcanic-hosted precious metal deposits, copper and molybdenum porphyry deposits, and volcanogenic massive sulfide deposits and has conducted research in geothermal exploration methods.

ACTIVITY UPDATE

Mike Brady, March 2006
www.activityupdate.com

NEVADA

Queenstake Resources Ltd. announced that reserves at the Jerritt Canyon Complex aggregate 3,700,000 tons @ 0.237 opt Au proven+probable. (was 3,000,000 tons @ 0.276 opt Au proven+probable) *Press Release: March 5*

Queenstake Resources Ltd. announced that based on recent drill results at the Starvation Canyon Project, reserves aggregate 676,400 tons @ 0.282 opt Au probable. (was 617,800 tons @ 0.294 opt Au indicated)
Press Release: March 5

Bravo Venture Group Inc. announced the results of two additional drill holes at the South Lone Mountain Project. Hole PSLM0601 was completed 15 meters from the old oil well and intersected Roberts Mountains Formation bedrock at 427 meters and within the interval 456-468 meters contained anomalous gold (up to 65 ppb) and pathfinders. Hole PSLM0602 was completed 1.5 km southeast of the old oil well and it intersected Lone Mountain Dolomite bedrock with only weakly anomalous gold (up to 19 ppb).
Press Release: March 6

New Sleeper Gold Corp. announced that it terminated its interest in the Clover and Jersey properties of Atna Resources Ltd. and Maximus Ventures Ltd. respectively and recorded at \$540,800 charge for past exploration expenditures.
Press Release: February 24

X-Cal Resources Ltd. announced that it repurchased a 50% interest (to now hold 100%) in the Sleeper Property

from New Sleeper Gold Corp. for \$4,310,300 and 10,000,000 shares. (resource @ West Wood = 150,000 tons @ 0.363 opt Au inferred)

Press Release: February 24

U.S. Gold Corp. announced that it offered to acquire all of the outstanding shares of White Knight Resources Ltd., Nevada Pacific Gold Ltd., Coral Gold Resources Ltd. and Tone Resources Ltd. through a share exchange. The exchange ratios proposed are 1.0 share White Knight/0.35 share USG; 1.0 share Nevada Pacific/1.0 share USG; 1.0 share Coral/0.63 share USG and 1.0 share Tone/0.26 share USG for a total value of \$256,900,000.

Press Release: March 6

Tone Resources Ltd. announced that it completed two drill holes at the Gold Bar North Project. Hole GBN06-1 intersected 385 feet of rhyolite then upper plate mudstones to a depth of 900 feet. Hole GBN06-2 intersected 450 feet of rhyolite then upper plate siltstones to 620 feet and finally lower plate limestone to 900 feet. Neither hole intersected anomalous gold.
Press Release: March 17

Golden Odyssey Mining Inc. announced that it exercised its option to earn a 100% interest in the Anchor Property from private interests for undisclosed terms.

Press Release: February 23

Golden Phoenix Minerals Inc. announced that it now has completed 425 feet of new underground workings at the Ashdown Project and that its underground mining crews have reached the Sylvia Moly Vein.

Press Release: March 16

Hecla Mining Co. and Great Basin Gold Ltd. announced that they would terminate their litigation regarding the Hollister Project in exchange for a modification of their original agreement that includes, among other stipulations that Hecla must achieve commercial production by August 2, 2009 to earn its 50% working interest. (resource = 717,200 tons @ 1.295 opt Au, 7.03 opt Ag inferred)

Press Release: March 1

Greencastle Resources Ltd. announced that it acquired an option to earn a 100% interest in the Indian Creek Property from private interests for 150,000 shares and \$250,000 cash over 4 years.
Press Release: March 20

Pan-Nevada Gold Corp. (was Castleworth Ventures) announced that it acquired an option to earn a 100% interest in the Monte/Easy Junior Property from the Lyle Campbell Trust for undisclosed terms.

Press Release: March 21

Kinross Gold Corp.(50%) announced that reserves at the Round Mountain Mine aggregate 275,026,400 tons @ 0.017 opt Au proven+probable. (was 173,966,000 tons @ 0.018 opt Au proven+probable)

Press Release: February 27

Timberwolf Minerals, LTD

Nevada Exploration Mgmt. Precious Metals
 Property Evaluation Porphyry Copper
 Land/Permits

David A. Wolfe 1314 Linden St.
 Canon City, CO 81212
 Phone: 719-275-2529 Cell: 719-371-4517
 E-Mail: T2wolfe@aol.com



WESTERN RECON
 and
Mineral Exploration Inc.

Claim Staking / Soil Sampling / Grids
 Experienced / Dependable/ Trimble GPS
 Gary Castagne 775-250-4879
 John Fernandez 775-815-2587

www.westernrecon.com

ALS Chemex



We are a global analytical testing company serving the mining and mineral exploration industry in Nevada and around the world.

We specialise in:

- Assaying and geochemical analysis for mining and mineral exploration projects
- On-site contract mine laboratory management
- Environmental monitoring of mining operations
- Acid mine drainage studies

Contact our laboratories in Nevada to find out how we can help you with all of your project's analytical needs.

RENO, NV
 Phone: 775 356 5395

ELKO, NV
 Phone: 775 738 2054

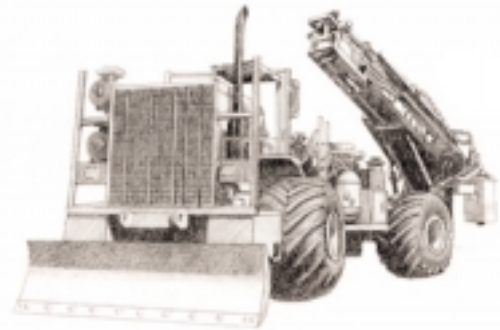
WINNEMUCCA, NV
 Phone: 775 625 4192

www.alschemex.com

*Right solutions....
Right partner*



DIVERSIFIED DRILLING, LLC



Providing Drilling Services To The Mining/Metals Industry Since 1980

3650 Grant Creek Road
 Missoula, Montana 59808
 Phone: (406) 542-1010 Fax: (406) 542-5065
www.diversifieddrilling.com

WE CAN HELP!

- Environmental and exploration support services
- Celebrating 40 years of service to the mining industry
- Experience in Mexico / Canada / Alaska



NORTH AMERICAN EXPLORATION INC.
NORTH AMERICAN MINE SERVICES INC.
 GEOLOGY | GEOPHYSICS | GEOCHEMISTRY
 HYDROLOGY | ENVIRONMENTAL SERVICES

447 North 300 West, Ste. 3 • Kaysville, Utah 84037 • Phone (801) 546-6453 Fax (801) 544-4554
nae@nae-xploration.com



**ENVIRONMENTAL SERVICES
 FOR THE MINING INDUSTRY**

- Baseline Studies
 - Environmental Permitting
 - Monitoring & Compliance
 - Reclamation & Closure Plans
 - Investigation & Remediation
- Elko Location
 775-738-8766**

www.jbrenv.com Reno and Salt Lake City locations

MINERAL EXPLORATION SERVICES

SOIL SAMPLING
CLAIMSTAKING
PROPERTY EVALUATION
MINE HAZARD FENCING

5655 Riggins Ct., #15, Reno, NV 89502
Tel: (775) 954-1082 Fax: (775) 829-6882
email: day@mineralexploration.com

Fire Assay
ICP - OES
ICP - MS
AAS
Custom Preparation
Bullion Analyses
BLEG

Corporate Office
1500 Glendale Avenue
Sparks, NV U.S.A. 89431-5902
Telephone (775) 356-0606
Fax (775) 356-1413

Chris Ioannakis, Managing Director,
Analytical Services



**American
Assay &
Environmental
Laboratories**

Elko Office
2320 Last Chance Road
Elko, NV U.S.A. 89801-4852
Telephone/Fax (775) 738-9100

E-mail: AALADMIN@aallabs.net
Website: www.aallabs.com



Enviroscientists, Inc.

4600 Kietzke Lane, Suite C 129, Reno, Nevada 89502
Phone: (775) 826-8822 Fax: (775) 826-8857

**Notices, Plans of Operations,
Cost Estimates, TRI, Biological Surveys,
Air Quality Permits & Audits**

Info@enviroincus.com www.enviroincus.com

Jo Beth Allen
Professional Graphics

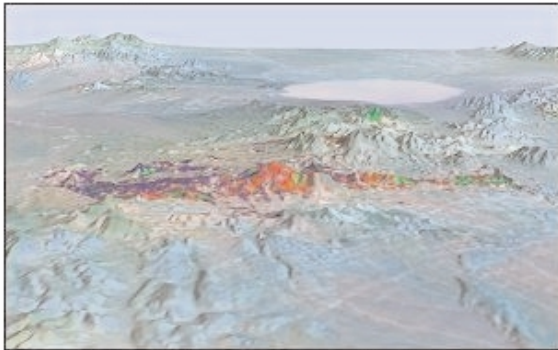
CAD Drafting/Digitizing/Scanning
High Resolution Presentation Graphics
Plotting/Printing
Geologist

1055 Joshua Drive
Reno, Nevada 89509

Phone: 775-324-7960
Fax: 775-324-7583

jobeth@yellowsb.net

EXPLORATION with ASTER



Alteration Image, Goldfield, Nevada

- CUSTOM CORRECTED DATA
- ALTERATION IMAGERY
- EXTENSIVE GLOBAL ARCHIVES

WWW.ASTERIMAGES.COM
email: pusa@rmi.net
dwc@overhill-imaging.com

RENT A PIMA!!



IDENTIFY and MAP ALTERATION
MINERALS IN THE FIELD and CORE

CONTACT US FOR Rentals and Services

Spectral International, Inc
303 403 8383 pusa@rmi.net
www.specmin.com

Petrographic and Ore Microscopy Services

for applications in the following areas:

- Base and Precious Metals
- Mineral Exploration
- Process Mineralogy
- Industrial Minerals
- Geological Mapping
- Forensic Geology



P.O. Box 10080
 American Canyon, CA 94503
 Phone: 707-553-2772
 E-Mail: sfmicro@earthlink.net

Schurer & Fuchs



JOSEPH R. ANZMAN

Exploration Geophysicist

- consulting
- interpretation
- project management
- geophysical surveys
- domestic & foreign

P.O. Box 370526
 Denver, Colorado 80237
 303-337-4559
 telephone/fax



**Carlin Trend Mining
 Supplies & Service**

www.carlintrend.com

We are now able to conduct Archeological Services.

Please Contact
 Jill Jensen

Archeological Survey,
 Portable XRF Surveys or Rental,
 Geological Consulting, Claim Staking,
 Soil Sampling, AutoCad & GIS
 Geology & Drafting Supplies

369 5th St., Phone 775-778-0668
 Elko, NV 89801 Fax 775-778-0687



DIXIE BULLOCK
 DISTRICT MANAGER

412 NORTH MCCARRAN BLVD.
 SPARKS, NV 89431

WILMA HATTER
 SERVICE REPRESENTATIVE
 HATTERW@SOSSTAFFING.COM

T. 775.331.5227 F. 775.323.7772
 WWW.SOSSTAFFING.COM

A Division of SOS Staffing Services, Inc.

Big Sky Geophysics

Clark Jorgensen, M.Sc.
 Geophysicist

*Field Work
 Processing
 Interpretations*

P.O. Box 353
 Bozeman, MT 59771
 USA

Phone: (406) 587-6330
 Fax: (406) 587-6394
 Mobile: (406) 580-9718
 clark@bigskygeo.com

**For more details, my background, and case studies,
 visit my webpage at www.bigskygeo.com**

Sample Bags

HUGE INVENTORY LOW, LOW PRICES



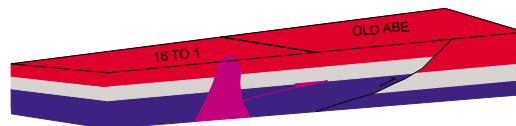
**NEW ADDRESS!
 LEGEND, INC.**

988 Packer Way
 Sparks, NV 89431

Off Glendale east of McCarran
 phone: (775) 786-3003
 fax: 786-3613
 www.Lmine.com
 email: info@Lmine.com

G.I.S. Land Services

Greg Ekins M.S. R.L.P. #32306 President
 Mineral Landman - Computer Draftsman
 "From Courthouse Records to Final Map"



Surface Title
 Mineral Title

AutoCad - ArcView - Mapinfo
 Geologic, GeoChem and Land Status Maps
www.gislandservices.com

E: greg@gislandservices.com
 P: 775-746-8803 F: 775-746-8802

6635 Broadridge Ct.
 Reno. NV 89523

GSN 2006/2007 ELECTION RESULTS

For the first time in our history, the entire GSN membership had the opportunity to vote on next year's nominees for the Executive Committee and Class A, three year term of the Board of Directors. Two hundred twenty three members voted almost unanimously in favor of approving the entire ballot. Thanks to all of you who voted and congratulations to the new GSN officers and directors, who are presented below:

Officers for the 2006/2007

GSN Executive Committee

<u>President</u> Ellie Leavitt	<u>Treasurer</u> Camille Prens
-----------------------------------	-----------------------------------

<u>Vice President</u> Greg Hill	<u>Membership Co-chairs</u> Greg French Opal Adams
------------------------------------	--

<u>Secretary</u> Leslie Olmstead	<u>Publications Co-chairs</u> Marilyn Miller Debbie Schneider
-------------------------------------	---

GSN Board of Directors

Class A: Three Year Term - 2006 to 2008

Fred Breit
Steve Green

GSN FOUNDATION UPDATE

Ann Carpenter, Chairman, GSN Foundation

Greetings and happy Spring wishes to all. As we all progress into field season, here are a few highlights of the GSN Foundation. Clancy Wendt has been moving on several frontiers that he initiated at the 2006 PDAC, for which we are hugely appreciative. As well, he is working with GSN Foundation Advisor Teri Roar to help us advance our fundraising strategies. Clancy's work and enthusiasm are appreciated, as he also serves as Foundation spokesperson on the newly formed GSN Board of Directors, keeping the Foundation's business up to date at the Board level. We have been advancing our outreach and fundraising, and are looking forward to more success over the summer.

GSN Newsletter Monthly Advertising Rates

Business card size (3 1/2 x 2'')	\$ 50.00
Quarter page (3 1/2 x 4 3/4'')	150.00
Half page (4 3/4 x 7 1/2'')	300.00
Classified ads \$10/line (up to business card size)	

For an advertising form, call the GSN office at 775/323-3500 or fax 323-3599. Digital or text ads must be received by the 20th of the month to appear in the following month's newsletter.

WINNEMUCCA CHAPTER MAY 10TH (Wednesday) MEETING

LATE CENOZOIC LANDSCAPE EVOLUTION IN NORTHEASTERN NEVADA AND ITS PREDICTIVE IMPLICATIONS FOR MINERAL DEPOSITS AND GROUND WATER

Alan R. Wallace, U.S. Geological Survey, UNR

Many basins and ranges in NE Nevada originally formed in the late Oligocene/early Miocene, were partially buried by middle Miocene sediments, and were exhumed by late Miocene and younger erosion. Miocene basin sedimentation began at ~16 Ma behind fault and volcanic dams, and sediments partially buried the highlands. Most basin margins were atectonic except for the detachment-controlled west flank of the Ruby-East Humboldt Ranges. Most dams were breached between 15 and 13 Ma; the Ruby-East Humboldt detachment sustained sedimentation until ~10 Ma. Post-sedimentation faults cut basins and highlands alike. After 10 Ma, streams reintegrated and carried newly formed sediments out of the region. In the Humboldt River basin upstream from Beowawe, as many as 16 strath terraces have been cut into Miocene sediments and some older rocks. Terraces in all drainages are consistent in number and relative elevations, and terrace knick-points young downstream, indicating response to a basin-wide base-level drop. Erosion has preferentially removed >400 m of poorly consolidated Miocene sediments, exhumed buried basement-cored highlands, and produced a drainage system that mimics that in the middle Miocene. One of the lower terraces formed at ~2.3 Ma (Reheis et al., 2003), indicating substantial earlier erosion. The Humboldt River was regionally extensive before 2-3 Ma and then became restricted to northern Nevada; post-2 Ma sediments eroded from northeastern Nevada were deposited in fault-controlled basins in northwestern Nevada.

These post-Oligocene processes affected both mineral deposits and ground water. Many epithermal deposits formed near Miocene lakes, and the lake distributions provide exploration guides for these deposits. Supergene alunite dates at Eocene gold deposits reflect the pre- and post-sedimentation stages of exposure and erosion, each of which weathered the deposits. Mineral deposits in NE Nevada are being exhumed or eroded, whereas those in NW Nevada are being concealed, producing two regionally different exploration concepts. Miocene basins are important sources of ground water, and the complex basin facies, post-sedimentation faulting, and variable erosion and burial have produced compartmentalized aquifers that strongly affect the properties and recharge of these reservoirs.

VISIT THE GSN WEBSITE AT:

www.gsnv.org

GSN SPRING 2006 FIELD TRIP

“Geology and Mineral Resources of the Trinity, Seven Troughs, and Kamma Ranges”

The GSN 2006 Spring Field Trip will visit the Trinity, Seven Troughs, and Kamma Ranges in west-central Nevada. Field trip stops will focus on Miocene epithermal systems. These generally lie along a NNW trending geophysical feature similar to that along the northern Nevada rift. The trip will include visits to the Bunce/Velvet, Seven Troughs, and Rosebud areas, as well as other prospects. Dave John of the USGS will present a talk on Saturday night.

Saturday, June 10, 2006

- 7:00 AM Meet at UNR parking lot.
- 7:30 AM Vans leave UNR promptly at 7:30 am
- 10:30 AM Bunce/Velvet district
- 12:30 PM Lunch provided
- 1:00 PM Seven Troughs district
- 5:30 PM Arrive in Lovelock, Sturgeons Motel
- 6:30 PM Cocktails
- 7:00 PM Dinner provided at Sturgeons
- 8:00 PM Talk by Dave John, USGS – Overview of geology and mineralization of the Trinity, Seven Troughs, and Kamma Ranges

Overnight Lodging – Sturgeons Motel, Lovelock

Sunday, June 11, 2006

Breakfast on your own

- 8:00 AM Vans Leave Lovelock
- 9:00 AM Epithermal systems between Seven Troughs and Rosebud districts
- 12:30 PM Lunch provided
- 1:30 PM Rosebud district
- 4:00 PM Return to Reno
- 6:00 PM Arrive UNR parking lot

Price includes transportation, overnight lodging, snacks and drinks, lunches, dinner, and guidebook.

Reservations are on a **first-come, first-served basis**; attendance is limited to **45 participants**.

Payment must be received in GSN office by May 19, 2006 to guarantee reservation.



Please complete and submit ASAP:

Spring 2006 Field Trip Sign Up

Name _____

Daytime Phone _____

Fax _____

Company _____

Address _____

Email _____

Person to contact in case of emergency:

Name _____ Phone _____

Lodging Needed in Lovelock: Y__ N__
Single__ Double__

Roommate (or we will assign) _____

MEMBER COST:	double room	\$210.00
	single room	\$230.00
	w/o Lovelock lodging	\$175.00
*NON-MEMBER COST:		
	double room	\$245.00
	single room	\$265.00
	w/o Lovelock lodging	\$210.00

*Non-members are encouraged to become members of the GSN for \$35 annual dues in order to take advantage of the reduced rates.

Amount included with this form \$ _____

Paid with Check # _____

Visa__ MC__ Exp Date _____

Credit Card# _____

Signature _____
(as it appears on card)

Payment must be made by May 19, 2006
No refunds after May 26, 2006

Fax: 775/323-3599 or mail to GSN office:
P.O. Box 13375, Reno, NV 89507
Or email to: gsn@mines.unr.edu

Don Hudson, John Muntean and Ellie Leavitt on the Bunce property in northwestern Nevada doing advanced preparation for the GSN Spring 2006 field trip scheduled for June 10-11.

LAWRENCE T. LARSON AND JOSEPH V. TINGLEY

RECOGNIZED AS HONORARY MEMBERS

Lawrence T. Larson and Joseph V. Tingley were recognized as Honorary Members during the April 21 GSN dinner meeting. Honorary Members are persons, who have made outstanding contributions to the advancement of the geological sciences in Nevada, or who have made significant contributions to the GSN and are deserving of recognition. Biographies of Larry and Joe and their individual contributions to advancement of the geological sciences in Nevada are presented below.

Lawrence T. Larson, Ph.D., Professor Emeritus Mackay School of Mines, University of Nevada, Reno

Tom Nimsic, President, American Au Ag Assoc

Lawrence T. Larson, Ph.D., Larry or L.T. to many of us, was born in 1930 in Waukegan Ill. As a youngster he played football and did exhibition roller skate dancing. After graduating from High School during the Korean conflict, Larry enlisted in the USAF and was stationed in England where he guarded something "secret" with shotguns and grease guns, but says he only "murdered" rabbits. Larry realized that the Lieutenants were in charge because they had college degrees, which helped him decide to go to college. He and his wife Beth met in college and have 3 grown children: Jackie, Doug (Mackay graduate) and Kathy.

His degrees include: B.S. Geology (highest honors) Univ. of Ill. Urbana, M.S. Geology and Ph.D. in Economic Geology, University of Wisconsin.

From 1961 to 1975 Larry advanced from assistant to full Professor of Geology at the Univ. of Tennessee at Knoxville. There he taught mostly upper level and graduate economic geology subjects. He directed graduate research leading to 2 Ph.D. and 18 M.S. degrees. At Tennessee, he authored over 25 publications for the Tennessee Div. of Geology, Economic Geology, GSA, American Mineralogist, AIME, Mining Engineering and others.

In 1975 Larry accepted the position of Chairman (1975-1991) and Professor of Economic Geology (1975-1997) at the Mackay School of Mines, UNR. When he arrived at Mackay, there were only 5 full time geology professors. He quickly grew the geology department to 20 professionals to meet the demand for graduates by industry. Besides being Chairman with all its responsibilities at Mackay, he also taught graduate and undergraduate courses in economic geology, mining and exploration geology, ore petrology, geochemistry, summer field geology and others. He also sat on over a dozen UNR and Mackay committees and was responsible for many grants and contracts being awarded to the University.

While at UNR, Larry was involved in numerous research projects including the Great Basin geological framework and uranium favorability study, gold at Bald

Mountain, uranium and zeolites in the Reese River Valley, geothermal resources in Dixie Valley and remote sensing in the Ely-Hamilton-Eureka area.

Larry was the author or co-author on over 80 reports, articles and abstracts. His publications included such diverse subjects as: Geothermal reservoir assessment case study, Northern Basin and Range province; Overview of energy and mineral resources at the Nevada nuclear waste storage; Miocene hydro-thermal activity at the Willard and Scossa mining districts, Pershing Co. NV; and Geology and gold exploration in western Turkey.

Scholastic Honors include, but not limited to the Phi Kappa Phi (honor society), Fulbright Professor and visiting Professor at two Universities in Turkey. In Turkey, he is considered to be the father of modern gold exploration.

Besides working for many companies as a consultant, Larry has also worked for the United Nations, NATO, State of Nevada, Sandia Laboratories, U.S. Department of Energy and many others. Larry continues to consult to many companies in Nevada and all over the world as a petrographic consultant specializing in ores and ore minerals.

When Larry retired from the University in 1997, Jaak Daemen as acting dean of Mackay School of Mines said:

"Your departure will leave a huge void that will be difficult to fill. The school will miss your major contributions to Economic Geology. Most recently your personal commitment and involvement in the start up of the Ralph J. Roberts Center have allowed this center to develop and bloom at a certainly astonishing speed. Bringing this center into being clearly is a major capstone contribution to your already most productive academic career.

Over your 22 years at the University you have made truly major contributions to Mackay and the University. I am especially impressed by the huge number of graduate students you have advised and by the astonishing number of Ph.D. and M.S. degrees your students have completed. It is very clear that your contributions in this regard have been a major factor in the recognition of Mackay as a major center for economic geology. Moreover your orientation towards research in support of the minerals industries, in particular of gold deposits, fits exceedingly well in our mission as a state university and a School of Mines."

Larry considers his greatest accomplishment in his academic career and contribution to the geological sciences as being able to push, shove, squeeze, and cajole nearly 100 students through graduate school. Many of them are members of the Geological Society of Nevada.

The Geological Society of Nevada is proud to recognize Larry Larson as an Honorary Member. Larry contributed greatly to understanding the geology of the State of Nevada for over 22 years through his research, education of future geologists and pursuit of academic excellence. Larry's training of geologists at the Mackay School of Mines now working throughout the State and his professional contributions to advancing the geology of Nevada makes him well qualified to be distinguished as an Honorary Member of the GSN.



**Joseph V. Tingley,
Economic Geologist Emeritus
Nevada Bureau of Mines and Geology**

D.D. LaPointe, *Nevada Bureau of Mines and Geology*



Joseph V. Tingley was born in Sacramento, California in 1938. He attended the University of Idaho and while still a student worked two summers in 1957 and 1958 at the Hazel Creek mine, an east-belt Mother Lode gold mine in El Dorado Co., California, as mine and mill sampler, time-keeper, and handled gold concentrate cleanup and amalgamation in the mill. After receiving his bachelors degree in Mining Engineering from the University of Idaho in 1960, he worked at the Strawberry Tungsten Mine and the New Idria Mercury Mine both in California, doing mine survey-

ing, geologic mapping, and installation and operation of an assay laboratory. From 1962 until 1963, Joe worked as a uranium geologist for Susquehanna Western, Inc. in Riverton, Wyoming and Falls City, Texas doing geologic mapping, drilling, and regional exploration in Wyoming, Nevada, California, and south Texas. He then returned to New Idria as senior staff engineer for the mining and furnacing of mercury ore at that mine, where he designed a gravity concentrating plant for low-grade mercury ore.

Somehow he managed to squeeze in time between these jobs to earn his masters degree in Mining Engineering from Mackay School of Mines in 1963, doing his thesis on tungsten exploration in Nevada and California. Having survived working with mercury, tungsten, and uranium, Joe moved on to explore primarily for porphyry copper deposits in Arizona and New Mexico working as a geologist for Superior Oil Co. Minerals Division, in Tucson, Arizona from 1963 to 1967. From 1967 to 1969, Joe worked as a geologist for Union Pacific Railroad, Natural Resources Division, first in Reno and then as manager of the Salt Lake district office exploration activities within the five-state Rocky Mountain area, looking for gold, copper, molybdenum, and mercury deposits.

In 1969, he returned to Reno, where he worked as a consulting mining geologist for several years conducting property examinations and regional exploration programs

for various metallic minerals commodities in Nevada, California, Arizona, and Idaho. In 1972-73, while working for Hazen Research, Inc. he did an in-depth property examination on the Mill City tungsten district for General Electric Co. that led to a 4-year job with G.E. from 1973 through 1977, during which time he successfully brought the Mill City tungsten project from exploration into mine development. In 1975, Joe's further detailed geologic studies for G.E. in the Getchell tungsten district led to development of the Getchell Mine. After 1976, when General Electric bought Utah International and merged its tungsten exploration staff with that of Utah, Joe's responsibilities were expanded to include management of tungsten exploration in the western U.S.

In 1978, Joe left Utah International to join the staff of the Nevada Bureau of Mines and Geology, where he has been for the last 28 years, achieving emeritus status in 2005. Joe has been a tireless field geologist and prolific publication producer during his years at NBMG. His NBMG publications alone include more than 100 authored works including 3 NBMG Bulletins, 6 NBMG Special Publications, 5 NBMG Reports, and 39 Open File Reports totaling more than 10,000 written pages of first-hand, field-gathered, factual information on the mines and prospects of the state. Many of these stand as solid reference volumes useful to anyone researching Nevada mining and mineral resources. Added to this are his numerous contract reports, abstracts, journal articles, and metallic minerals exploration summaries. He modestly describes his principal research while at NBMG as a "collection of data on and evaluation of metallic mineral resources in Nevada". The reality is that there is hardly a mine, prospected area, or dog hole in the state that does not have a sample, field description, and geochemical analysis on file for public inspection at NBMG done under one of Joe's resource evaluation studies, including those on the Nevada Test Site, Nellis Bombing Range, and Yucca Mountain federally restricted lands. It can safely be said that any geologist doing minerals exploration work in Nevada has used and relied on Joe's publications repeatedly.

In addition to this impressive professional work, in recent years, Joe has been a major contributor to a series of very popular NBMG roadside field guides: *Geologic and natural history tours in the Reno area*, *Geologic tours in the Las Vegas area*, and *Traveling America's loneliest road, a geologic and natural history tour through Nevada along U.S. Highway 50*. He currently has another roadside guide for Highway 93 in progress, and is widely known as a lecturer and writer on all aspects of Nevada mining history.

The body of work that Joseph Tingley has contributed on mineral resources in the state of Nevada will stand for decades to come as a source of reliable data for geologists, mining historians, and the general public, and well-qualifies him to be recognized as an Honorary Member of the Geological Society of Nevada.



ATTENTION GOLFERS!!



The GSN annual golf tournament is scheduled for Saturday, July 15 at Washoe County Golf course. A 1:00 PM shotgun start is planned, with a barbeque to follow. **Eklund Drilling** has once again generously offered to sponsor the event, and as in 2005, *there will be no charge for the golf and the barbeque this year, as Lance has agreed to cover all costs!!* We can accommodate only 144 golfers, so sign up early!! Deadline for registration is July 7. You may call (775-323-3500), fax (775-323-3599) or e-mail (gsn@mines.unr.edu) Laura at the GSN office to sign up, individually, or as a foursome. Please provide the following information for each golfer.

Registration Form

Name: _____ Ave. score: _____

Address: _____

Phone: _____ E-mail: _____

Teamed with: _____

BBQ Guest Name(s): _____

SPONSORED BY EKLUND DRILLING COMPANY, INC.



UPCOMING EVENTS

May 4 – NEVADA PETROLEUM SOCIETY – Christy Morris, Nevada Division of Minerals. Title: “Nevada Division of Minerals and the Oil & Geothermal Businesses”. Austin’s Restaurant, 7671 South Virginia Street in Reno, NV. Cocktails at 6:30 pm. Dinner is served at 7:00. The talk immediately follows dinner, 7:45 or 8:00 pm. Reservations are required; please contact Diane Phillips at trailsend@pyramid.net or 775/267-4663.

May 14-16 – SEG 2006 CONFERENCE “Wealth Creation in the Minerals Industry”. The Conference Center, Keystone Resort, Colorado. Website: www.seg2006.org.

May 14-17 – CIM CONFERENCE AND EXHIBITION, Vancouver Convention & Exhibition Centre, Vancouver, BC, Canada. For more information, contact Jean-Marc Demers at 514/939-2710 ext. 1314. Email: jmdemers@cim.org, Website: <http://www.cim.org>

June 8-9 – 21st ANNUAL MINING EXPO, Elko, Nevada. For information contact the Elko Convention and Visitors Authority, 700 Moren Wy, Elko, NV. Ph. 775/738-4091, website: <http://www.elkocva.com>.

Aug 31 - Sept 9 – Short Course on Ore Deposits Mapping - “Yerington porphyry and skarn mapping exercises and field trip of

ore-forming systems in the Great Basin”. Contact Lowell Program in Economic Geology: Seedorff@geo.arizona.edu, Izurcher@geo.arizona.edu. Or visit: <http://econ.geo.arizona.edu/modules/>

GSN MEMBERS’ PERSONAL NOTES & NEWS

Career Related Moves

► Vic Chevillon has been retained as a Senior Consultant by Midway Gold principally to help advance the exploration at the Spring Valley and Midway Gold projects in Nevada. Vic was previously with Placer Dome Exploration.

► Nancy Wolverson and Ellie Leavitt accepted positions with Western Energy Development Corp. in Nevada. Nancy has relocated back to Nevada after spending several years in Missouri. Congratulations!

Members are encouraged to keep us informed about their own career related moves and awards, and deaths of GSN colleagues. Your information needs to be received by Laura at gsn@mines.unr.edu by the 21st of each month.

GSN 2005 SYMPOSIUM PROCEEDINGS AND FIELD TRIP GUIDEBOOKS

2005 Symposium Proceedings

		QTY	TOTAL
05-1	2005 Symposium Proceedings, Window to the World, 1,368 p. (262 color), \$155.00 CD included	_____	_____

2005 Symposium Field Trips

05FT01	Geology and Structural Controls of the Precious Metal Deposits of the Walker Lane & South-Central NV, (2005) \$45.00	_____	_____
05FT03	An update on the Northeast NV Eocene Paleogeography, Volcanic Succession, & the Depth of Formation of Sediment-Hosted Gold Deposits of the Northern Carlin Trend, NV, (2005) \$45.00	_____	_____
05FT04	Sediment-Hosted Gold Deposits of the Getchell District, NV, (2005) \$45.00	_____	_____
05FT05	Low Sulfidation Vein Systems in the Northern NV Rift, NV, (2005) \$45.00	_____	_____
05FT06	Geology & Mineralization of Sediment-Hosted Gold Deposits of the Southern Carlin Trend, NV, (2005) \$45.00	_____	_____
05FT07	Sediment-Hosted Gold Deposits of the north-central Eureka-Battle Mountain Trend, NV, (2005) \$45.00	_____	_____
05FT08	Sediment-Hosted Gold Deposits of the Independence Range, NV, (2005) \$45.00	_____	_____
05FT09	Porphyry Deposits of the Great Basin, (2005) \$45.00	_____	_____
05FT10	Geology, Mineralization & Remote Sensing of the Comstock District, NV, (2005) \$45.00	_____	_____

TOTAL PURCHASES _____

See chart below for Shipping & Handling _____

TOTAL US \$ _____

SOLD TO:

Name: _____

Company: _____

Street Address: _____

City: _____ State/Prov.: _____

Zip Code: _____ Country: _____

Phn: _____ Fax: _____

Card #: _____

VISA _____ MasterCard _____ Expiration Date: _____

Signature _____

(required for credit card purchases only)

Please make checks payable to **Geological Society of Nevada**. Payment must accompany order (sorry, NO purchase orders). Payment should be made in US dollars. Price includes NV sales tax when applicable. Prices do not include international customs duty or taxes. This price list supersedes all others & is effective 12/05. Prices are subject to change. Tax ID # 88 0143056. Published in the **USA**.

Shipping & Handling for Purchases Totaling	Continental U.S.	Alaska Hawaii	Canada	Mexico/W. Europe Caribbean/Scandinavia	Australia	Central & S. America	E. Europe, Asia Africa, All Others
\$ 0 - 50	\$ 7.00	\$20.00	\$15.00	\$45.00	\$50.00	\$70.00	Please contact GSN office for current shipping rates
50 - 100	9.00	30.00	25.00	80.00	100.00	150.00	
For each additional \$50 add	4.00	10.00	10.00	20.00	25.00	40.00	

Office use only:

Order rec'd _____ Picked-up _____ Shipped _____ Ck # _____ Visa or MC _____ Pmt rec'd by _____

GEOLOGICAL SOCIETY OF NEVADA



gsn@mines.unr.edu • www.gsnv.org
Telephone (775) 323-3500 FAX (775) 323-3599
Post Office Box 13375
Reno NV 89507
USA

NON PROFIT
ORGANIZATION
U.S. POSTAGE
PAID
RENO, NV
PERMIT NO. 931



PROFESSIONAL STAFFING FOR THE MINERALS INDUSTRY

ENGINEERS GEOLOGISTS LABORERS CLERICAL STAFF TECHNICIANS
EQUIPMENT OPERATORS MANAGERIAL STAFFING EXECUTIVE RECRUITMENT

AS THE ESTABLISHED LEADER IN PROFESSIONAL PERSONNEL SERVICES TO THE MINING AND MINERALS INDUSTRY, GEOTEMPS STANDS WITH THE INDUSTRY AT PUBLIC HEARINGS, IN GOVERNMENT LOBBY EFFORTS, FOR WRITE-IN CAMPAIGNS, WITH BUSINESS DONATIONS, AND WITH INDUSTRY ASSOCIATIONS.

RENO
775-746-7146
970 CAUGHLIN XING
SUITE 102, 89509
FAX: 775-746-7156

ELKO
775-738-4707
557 WEST SILVER ST.,
SUITE 201A, 89801
FAX: 775-738-0409

ELY
775-289-6448
725 AVENUE K,
SUITE B, 89301
FAX: 775-289-6472

TUCSON
520-292-1000
4760 NORTH ORACLE RD.,
SUITE 200, 85705
FAX: 520-292-9100

WINNEMUCCA
775-625-1555
FAX: 775-625-1556
www.geotemps.com
mining@geotemps.com