

GEOLOGICAL SOCIETY OF NEVADA NEWSLETTER

Geological Society of Nevada, 2175 Raggio Parkway, Room 107, Reno, NV 89512
(775) 323-3500 - Hours Tuesday -- Friday, 8 a.m. to 4 p.m.
Website: www.gsnv.org • E-mail: gsn@gsnv.org



May 2012, Vol. 28, No. 5

Published monthly except June and July

CALENDAR OF GSN EVENTS

PRESIDENT

William (Bill) Howald
Rye Patch Gold US Inc.
bill@ryepatchgold.com

VICE PRESIDENT

Dave Emmons
Kinross Gold USA, Inc.
demmons@sbcglobal.net

SECRETARY

John Hoskins
cbtr63@sbcglobal.net

TREASURER

Bob Kastelic
Consulting Geologist
bob_kastelic@yahoo.com

MEMBERSHIP CHAIR

Carmen Arbizo
Inspectorate America Corp.
carmen.arbizo@inspectorate.com

PUBLICATION CHAIR

Mary Stollenwerk
ALS Minerals
Mary.Stollenwerk@ALSGlobal.com

OFFICE MANAGER

Laura Ruud
gsn@gsnv.org

**May 5 & 6,
2012
Sat. & Sun.**

G.S.N. SPRING FIELD TRIP—to Yerington and Tonopah, NV. The Trip is sold out! Registered attendees will meet at the GSN Office on Saturday, May 5th at 6:30 a.m.

**May 9, 2012
Wednesday**

WINNEMUCCA CHAPTER (Every 2nd Wednesday of the month)
The monthly meeting will be held at the Martin Hotel, 94 West Railroad St. Drinks and Appetizers @ 6:30 PM, Talk @ 7:00 PM. **SPEAKER:** Dean Heitt, Newmont Mining Corp. "Mining History of the Carlin Trend: 1875-1961" (see abstract on page 10). **Sponsor is: Inspectorate America Corp.** For more information contact Erin Gray @ 775-635-6420.

**May 17, 2012
Thursday**

ELKO CHAPTER (Every 3rd Thursday of the month)
The monthly meeting will be held at the Western Folk Life Center, 501 Railroad St. Refreshments at 6:00 PM, Talk at 7:00 PM. **SPEAKER:** Lindsey Clark, UNLV Masters Student. Title "Ore Characterization and Paragenetic Relationships of Breccias and Au Mineralization at the Cortez Hills Carlin-type Gold Deposit, Nevada, USA" **Sponsor is: JBR Environmental Consultants Inc.** (abstract on pg. 3) For more info. contact Jared Townsend at jtownsend@barrick.com; or Doug Eck at deck@barrick.com.

**May 18, 2012
Friday**

GSN MEMBERSHIP MEETING (Every 3rd Friday of the month)
The monthly meeting will be held at the Reno Elks Lodge, 597 Kumle Lane, Reno. Drinks at 6:00 PM, Dinner at 7:00 PM, Talk at 8:00 PM. **SPEAKER:** Lindsey Clark, UNLV Masters Student. Title "Ore Characterization and Paragenetic Relationships of Breccias and Au Mineralization at the Cortez Hills Carlin-type Gold Deposit, Nevada, USA" (abstract on page 3). **Sponsor for the evening is: Harris Exploration Drilling & Associates, Inc.** Dinner reservations must be made by NOON Thurs., May 17th. Call Laura Ruud at (775) 323-3500; or email: gsn@gsnv.org. **\$18/each.**

**May 31, 2012
Thursday**

SOUTHERN NEVADA CHAPTER (Every Last Thursday of the month)
The monthly meeting will be held at the Lilly Fong Geoscience building at UNLV, Room 105. Social hour begins at 6:45 pm with the speaker starting at roughly 7:15 pm. **Speaker TBA.** For more information contact R. Paul Bowen, 702-247-7765.

GSN BOARD OF DIRECTORS

Chairman

David Shadrack

GSN President

Bill Howald, Current

Most Recent Past GSN President

Peter Vikre

Elko Chapter President

Jared Townsend

So. Nevada Chapter President

Paul Bowen

Winnemucca Chapter President

Erin Gray

Class A, 2009-2012

Lynne Volpi
Kim Craig

Class B, 2010-2013

David Caldwell
Marcus Johnston

Class C, 2011-2014

David Shadrack (Chairman)
Camille Prenn



G.S.N. MAY 2012 MEETING SPONSOR

HARRIS EXPLORATION

DRILLING & ASSOCIATES, Inc

Exploration Drilling SINCE 1956

Contact: Pat Harris- President

Cell (760)822-7886 E-mail: Pharris@harrisexploration.com

www.harrisexploration.com

FROM THE PRESIDENT
William Howald, G.S.N. President 2011—2012

Dear GSN Members:

I would like to thank our April sponsor – Geotemps, and our speaker, Graeme Davis, Vice President Geoscience, Kinross Gold Corporation, for his presentation on the geology and discovery history of the Tasiast gold deposit in Mauritania. One of Graeme’s conclusions - that sometimes we get caught up in the dogma of an area, and the tendency to write off other possibilities can and does happen. I believe as Graeme does that there are still **BIG** deposits to be found, and Nevada is still delivering some **BIG** ones like Red Hills-Goldrush and Long Canyon. I like to think explorationists approach every property, submit a proposal or idea as an opportunity, and our job is to decide if it is the right opportunity for our group, team, or company to pursue. The other great takeaway is BIG deposits have BIG footprints!

It is hard to believe, but the 2011-2012 GSN year is almost over and this is my last President’s message – my “swan song”. I want to thank all of our speakers for their time and effort in putting together interesting, informative, and thought provoking presentations. The speakers are John Muntean (September 2011), Rich Lundin (October 2011), Jon Price (November 2011), Rob McEwen (December 2011), Greg Hall (January 2012), Dave Arbonies (February 2012), Chris Henry (March 2012), Graeme Davis (April 2012), and our May 2012 speaker UNLV student Lindsey Clark.

Lindsey’s talk is titled’ **“Ore Characterization and Paragenetic Relationships of Breccias and Au Mineralization at the Cortez Hills Carlin-type Gold Deposit, Nevada, USA”**. Yes, it’s another Cortez talk – but what a great place!

In addition to the speakers, I want to thank the

Executive Committee for all of their time, involvement, and achievement. Over the year, the on-line store was initiated and is up and running; the interactive map is working, and the goal of being able to download GSN publications anywhere there is an internet connection is coming to fruition. There were two excellent field trips planned with the final trip for the year coming up on May 5th and 6th; the membership grew from 850 to over 1,200; the GSN finances stayed in the black; and all of our filings were made on time with the various state and federal agencies. This achievement was made possible through the commitment of president-elect Dave Emmons (Vice President), Mary Stollenwerk (Publications Chair), Carmen Arbizio (Membership Chair), Bob Kastelic (Treasurer), and John Hoskins (Secretary). Finally, I want to thank the person who really makes things happen and is the high performance engine of the EC – Laura Ruud. Without Laura’s continuous input, ideas, and tenacity, the EC would be disheveled, disgraced, and disavowed. Thanks Laura for helping us meet and achieve our 2011-2012 goals.

As I stated back in September, unlike most professional organizations, the GSN monthly meetings allow for camaraderie among its members with the opportunity to enhance their geologic knowledge. I think this amalgamation of friends, fun, and geologic thought makes GSN an exciting and pleasurable professional organization, and I have had a fantastic, fun-filled year. I hope you agree and will continue to participate and show your agreement by letting out a great **BIG LOUD PIRATE CHEER – YAAAAAAYYYYYY!!!!!!!!!!**

A mile high, a mile deep



Thanks to Geotemps, Inc.
For Hosting the April 20, 2012 Meeting!

GSN May 18, 2012 Membership Meeting

Reservations Are Required - Please Cancel if You Are Unable to Attend

GSN CAN NO LONGER GUARANTEE DINNER SEATING WITHOUT ADVANCE RESERVATIONS.
Please call 775-323-3500, Fax 775-323-3599 or e-mail gsn@gsnv.org by **NOON on Thursday, May 17, 2012.**
Social Hour: 6:00 PM – Dinner: 7:00 PM – Speaker: 8:00 PM

\$18.00 per person (note new price. The attendees voted at the March meeting to cover the caterer's additional costs for china plates and being able to sit at the dinner tables during the talk)

Location: Elks Lodge, 597 Kumle Lane, Reno, NV
Directions: across (W) from the Reno-Sparks Convention Center
(S. Virginia Street, behind the Les Schwab Tire Center)

Ore Characterization and Paragenetic Relationships of Breccias and Au Mineralization at the Cortez Hills Carlin-type Gold Deposit, Nevada, USA

Authors: Lindsey R. Clark¹, Jean S. Cline¹, Adam C. Simon¹

1-University of Nevada Las Vegas

The Cortez Hills Carlin-type gold deposit (CTGD), located on the Battle Mountain-Eureka trend of Northern NV, is hosted in a conical shaped polyolithic breccia whose central axis strikes parallel to the Voodoo normal fault. Due to the high porosity and supergene enrichment of the Cortez Hills Breccia Zone (CHBZ), Au grades are locally in excess of an ounce per ton. Gold mineralization within the refractory ore at Cortez Hills shares many characteristics with other well studied CTGDs. However, new observations during this study document 1) fragmented realgar in a few samples that are rimmed by gold-bearing pyrite, 2) a Hg- and Tl-rich late-ore stage event characterized by uncommon/newly recognized minerals, and 3) textural relationships show that ore-stage mineralizing fluids increased porosity, resulting in contemporaneous brecciation and Au mineralization.

The data collected indicate that the CHBZ refractory ore exhibits the following paragenetic relationships. 1) Diagenetic pyrite was deposited in passive margin carbonate rocks. 2) A pre-ore suite of minerals apparently associated with low-grade contact metamorphism includes sphalerite, chalcopyrite, and tremolite. 3) Ore-stage alteration minerals include illite, jasperoid, and Au- and trace element-rich iron sulfides. 4) Hg- and Tl-rich minerals including aktashite ($\text{Cu}_6\text{Hg}_3\text{As}_4\text{S}_{12}$) and routhierite/christite (TIHgAsS_3) precipitated during a late-ore stage event directly following the precipitation of Au-bearing iron sulfides. 5) Late- to post-ore stage minerals include realgar and calcite and are associated with cooling and collapse of the hydrothermal system.

Transects through carbonates that transition from negligible to high Au concentrations exhibit increasing alteration from primarily recrystallized calcite into rocks that contain Au-bearing iron sulfides, illite, fine-grained calcite and insoluble residual material concentrated in dissolution seams. With continued increase in Au concentration, these highly altered rocks transition into heavily brecciated rocks with strongly mineralized clasts and a lower grade matrix. Late-ore stage realgar precipitated in open space throughout the breccia. The realgar commonly conforms to euhedral crystal faces and precipitates in zones of intense fracturing and areas of high porosity. Paragenetic and textural observations suggest that the dissolution seams represent ore fluid pathways through the carbonate host rocks, and intense fluid rock interaction along these seams ultimately resulted in brecciation. Late-ore stage minerals fill in the open spaces of the breccia, signifying that brecciation terminated with cessation of the ore fluid incursion.

Lindsey R. Clark Biography

Lindsey is currently a 4th semester M.S. Geology student studying at University of Nevada Las Vegas (UNLV) under the advisement of Dr. Jean Cline and Dr. Adam Simon. She has spent two summers interning with Barrick; one summer was spent interning with Goldstrike Exploration and the other summer with Cortez Mine Geology. Lindsey received her B.S. Geology degree from UNLV in December of 2009.

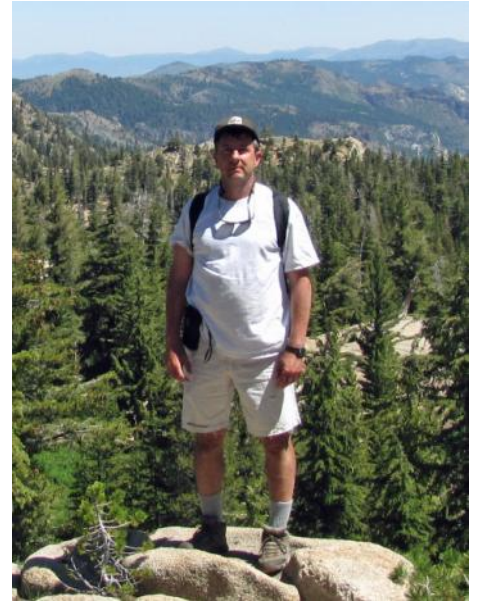
“FACES OF GSN”

John Muntean

Nevada Bureau of Mines and Geology

“Living the dream” is a cliché to most, but that is what geology has allowed me to do. Few people in life are blessed with making a living doing something that they are truly passionate about, where the only true difficulty is the lack of hours in a day. My passion for geology and gold exploration has pushed me to expand and grow as a person and experience a lot more than I ever would have imagined as a kid.

To put it in perspective, I grew up in the northwest corner of Indiana near Chicago. The “Region” was a very flat land of factories, concrete, and bedroom communities of closely spaced houses. Few people went to college, and most got jobs in the mills. Both my grandfathers were hourly, my dad was salaried, and because I was good in science and math, I was destined to work in the mill as an engineer. That was the natural progression. That did not sit well with me growing up, especially after taking two long “Griswold-like” summer family vacations, where I got to see something other than a smokestack on the horizon for the first time, namely the Rockies and the Sierras. After those experiences, I started reading a lot about the American West, especially about the gold rushes and boom towns. When I was 16, my life changed. My dad passed away at a young age, which impressed upon me that I could die at any time and that I should try to live my life without regrets. Later that year, I saw a television program on PBS about modern gold exploration. Like most Americans, I had no idea there were people still looking for gold, and employing science and technology to boot. The next day I checked out all the books the library had on geologists. I then took aptitude tests from my high school guidance counselor and found that geology was a good fit. A strange sense of calm and clarity came over me. At that point I knew what I was called to do, and from then on the blinders have been on.



After high school I went to Purdue University, not to be an engineer, but to study geology. I was fortunate to work with Bob Loucks, an economic geology professor who taught me an incredible amount. Up until that point, my science education was rote learning. Under Bob’s tutelage, I did an undergraduate research project on gold-quartz veins in the Medicine Bow Mountains of Wyoming, during which I learned to observe, record data, and apply the scientific method. For better or worse, that started me on a long trek of bouncing back and forth from research and industry, trying to bring together their common interests. After Purdue, I went on to the to the University of Michigan, where I did a MS under Steve Kesler on the huge Pueblo Viejo high-sulfidation epithermal gold deposit in the Dominican Republic. Going to the DR was my first time overseas experience and included flying into the mine in a Vietnam-era helicopter with soldiers armed with M-16s and a load of plantains when protesting campesinos had blocked all the roads. No big deal for most geologists, but certainly a big deal at that time for this sheltered Midwesterner.



In full lecture mode at the Chinese Academy of Sciences in southwest China. One might think I am describing in universal sign language something other than a geologic concept.

Then in 1989, I moved from Ann Arbor to Winnemucca to be an exploration geologist on staff with Santa Fe Pacific. Though I had summer jobs with the USGS and Atlas in Nevada and Oregon, Santa Fe was

my first real job in the industry. I, along with other new hires, worked under Wade Hodges. Based in Winnemucca, I was totally immersed in learning about exploration. Long days, followed by long dinners at the Martin talking, yelling “cocktails on 5” at Winner’s with Jeff Deen after midnight, and coming in the next day reeking of garlic and red wine ready to do it again. Oh, to be young and feeling like superman once again. Those were my favorite years in industry. As many GSNers can attest to, it was such a great atmosphere at Santa Fe during that time, thanks to people like Ron Parratt.

During my time with Santa Fe I was on a team that explored mainly for epithermal gold deposits west of Winnemucca. During that time I wondered what processes were operating under epithermal deposits. In 1991, Dick Sillitoe came through Reno and gave a talk on the Maricunga Belt in the high Andes of Chile, during which he showed exposures where porphyry mineralization transitioned into epithermal mineralization along single hillsides. That talk inspired me to do a PhD under Marco Einaudi at Stanford University, where I mapped porphyry-epithermal transitions in 3 districts in the Maricunga Belt. Marco passed down the Anaconda legacy of extracting as many secrets as you can from the rocks before jumping to conclusions.

Before leaving for Stanford I met my wife Donna in Reno. My first 2 years at Stanford were treated like an extended drill project where I did “10-4s”, spending 10 days at Stanford and driving back to Reno to spend 4 days with Donna. Soon after we got married in 1994, I disappeared to Chile for 6 months. I am sure some GSNers can relate. Donna, my daughter Kylie and son John have been my saviors, giving me some semblance of balance, though our definitions of balance do not always jive. Such balance is critical; there would be no way I could sustain the pace of those wild and crazy Santa Fe days.

After graduating from Stanford in 1998, I jumped back into industry, first with Homestake, and then six years with Placer Dome. During that time, I began focusing on Carlin-type gold deposits, quite the change from my epithermal and porphyry background to that point. In 2004 I decided to jump back into research. In January of 2005 I began my current position as Research Economic Geologist/Professor with the Nevada Bureau of Mines at the University of Nevada Reno. I learned that “getting the geology right” was important but is not the most critical objective for an exploration geologist in industry, which is to find ore that will make their company lots of money either by mining it or selling it. It’s been my perception that the most successful exploration geologists truly have the blinders on and are entirely focused on that objective at the expense of everything else, even to the point of sacrificing their careers and families. So for now I am in the business of “getting the geology right” and helping train the next generation of Nevada exploration geologists. Seriously, my position with NBMG allows me to pursue my long-time goal to bring together the common interests of industry and research. Instead of one company, I get to work with several companies and hopefully help them find ore. This last year, though, has been very tough with the huge budget cuts suffered by NBMG, and, honestly, has made me re-evaluate my future. Whether or not NBMG can successfully continue its role as the state’s geological survey remains to be seen. But the explorationist in me tells me to remain optimistic and not cut and run. I trust GSNers will continue to be supportive of NBMG.



Jeff Deen (left) and I in my early 90s “Rambo attire”.
1990 Santa Fe stream sediment program

I am proud to be a member of GSN. Going to meetings and the symposium in the early 90s was a great way for someone new to Nevada to expand beyond the comfort zone of his company and meet lots of interesting “characters”. I know of no other group of people so committed to their profession. When GSNers run into each other, rather than exchanging niceties about family and their golf games, the conversation jumps right to a specific outcrop or drill hole intercept (Radu knows what I am talking about). It is also encouraging to see new blood being infused until GSN. From my first GSN meeting that I attended in 1990 into the early 2000s, I was almost always one of the 5 or 10 youngest people in the crowd. However there have been many more younger faces at the meetings in recent years, especially at meetings in Elko and Winnemucca, away from the Reno mothership. I hope that trend continues.

OBITUARIES

Cy Field

By Robert Rye, John Dilles, and Richard Fifarek

Cyrus West Field, died Nov. 21, 2011 at his home in Newport, Oregon, about a year after suffering a serious stroke. He spent his childhood in Duluth, Minnesota, graduated from Dartmouth College in 1956, and received a PhD in Geology from Yale University in 1961. His thesis dealt with sulfur isotope geology of vein and sandstone-type uranium deposits. He worked with Kennecott Copper Corporation as a research geologist-geochemist before joining the faculty of the Geology Department at Oregon State University in 1963. He was a professor for 34 years, the last six as chairman during which time he presided over the formation of the Department of Geosciences and the employment of the first female geology professor. As a professor, he mentored nearly 50 MS and Ph.D. students who went on to careers in academia, industry and the government. As a research geologist, he made contributions to the geology, genesis, and exploration of hydrothermal base and precious metal deposits of the Pacific Northwest, Basin and Range, and Andean Cordillera of Chile and Peru. These efforts focused on porphyry, skarn, epithermal and volcanogenic massive sulfide deposits. He was particularly interested in applying sulfur isotope geochemistry to porphyry deposits with colleagues at Bingham, Butte and El Salvador. He published the first sulfur-isotope study of alunite and addressed the problem of distinguishing supergene and hypogene sulfates. Upon retirement to Newport in 1997 he continued to publish in peer-reviewed journals as an emeritus professor. He served SEG as Vice-President, Councilor, Chairman of two committees and as a Foundation Trustee. He will be remembered as a man of integrity and kindness, an inspiring teacher, a wonderful mentor, and as a valued friend and colleague. Cy is survived by Rebecca, his childhood friend and wife of 53 years, four sons, Cyrus, Thorold, Frederic, and Edward, and three grandchildren.



There will be a memorial service in Oregon on August 4, 2012. For further information contact Rebecca Field (crfield@newportnet.com) or John Dilles (dillesj@geo.oregonstate.edu). All OSU Graduate student who were mentored by Dr. Field are encouraged to attend.



Donald James Decker

Donald James Decker, after a short season of cancer, finished his earthly journey on April 16, 2012 to enter his heavenly home. He was born August 22, 1944 to Glenn and Elizabeth Decker of Corvallis, OR. He grew up on the family farm on Decker Road and was involved in 4H and Future Farmers of America throughout his school years. As a youth he attended a revival in Philomath, OR and accepted Christ as his Savior. This very important decision was a life changing event for him.

He attended local Corvallis schools and graduated from Oregon State University with a Bachelor of Science degree in Geology. In 1968, he married Suzanne Whitney from Fortuna, CA. After graduation in 1969, they moved to Reno, NV where they attended University of Nevada. Don went to graduate school at Mackay School of Mines (now known as Mackay School of Earth Sciences and Engineering) where he earned his master's degree in Geology.

His geology career spanned the next 40 plus years in Nevada, Alaska, and Oregon where he searched for gold, silver, barite, and other precious metals. Over time he acquired many interesting and compelling mining properties. A gifted geologist and successful businessman, he developed his own mining related companies: Decker Exploration, Century Gold, LLC, Faith Land, Faith Land and Minerals, and participated in American Innovative Minerals, LLC.

After moving to Winnemucca, NV in 1973, he became the proud father of Russell (married to Lori), followed by Mary in 1977 (married to Dustin Baker), Amy in 1980 (married to Nathan Gillespie), and Matthew in 1984 (married to Melodie). Don often read to them and wore out Picture Bibles as they were growing up. He loved each of his children so very much and was proud of the adults they have become. The family lived in various northeast Nevada locations before settling predominantly in the Elko area. In 1986, he and his family built a home in Lamoille, NV. The Ruby Mountains were a wonderful view from their home and over the years he and his family enjoyed many outings there.

Don and his family relocated to Corvallis, OR in 1989. In 1991, he earned another master's degree in Christian Leader

OBITUARY

Donald Decker (cont):

ship from Western Conservative Baptist Seminary in Portland, OR. He and Suzi moved back to Elko, NV in 1998.

Later, grandchildren came to delight his life as well - Jared, Emily, and Ethan Decker, Kase Baker, and Digeo Decker. As each grew, he was able to show them how to pan for gold as well as garnets from the Ruby Mountains and teach them basic geology. He loved playing games and wrestling with them.

His gift of giving was another source of joy for him. He encouraged many people to venture into short term mission work and supported many on long term missions in a variety of countries for his Savior and Lord. He was privileged to travel to Mongolia and China on short term mission trips with Campus Crusade for Life and Jesus Film Projects. He enjoyed giving to help build churches in various countries as well as funding education for future Christian leaders and workers through Multnomah University and various Christian schools in Oregon and Nevada. One of his favorite Bible verses was, "Do not store up for yourselves treasures on earth, where moth and rust destroy, and where thieves break in and steal. But store up for yourselves treasures in Heaven, where moth and rust do not destroy, and where thieves do not break in and steal. For where your treasure is, there your heart will be also." Matthew 6:19-21. As a family, we have a huge deposit in heaven with our husband and father and grandfather. He is survived by Suzi, his wife of 43 years, children, grandchildren, brothers Van Decker of Corvallis, OR and Everett Decker of Culver, OR, and their families.

Memorial Services to be held at the Elko Senior Center, Elko, NV on Saturday, May 12, 2012 at 2:00pm.

In lieu of flowers, please donate in Don's memory to:

- The JESUS Film Project, PO Box 628222, Orlando, FL 32862-8222

- Crown Financial Ministries, 1035 Old Peachtree Road NW, Lawrenceville, GA 30043-3309

- Young Life Foundation, P.O. Box 520, Colorado Springs, CO 80901-0520

- Spring Creek Christian Academy, 285 Spring Creek Parkway, Spring Creek, NV 89815

- Multnomah University, 8435 NE Glisan St., Portland, OR 97220

-Santiam Christian Schools, 7220 NE Arnold Avenue, Corvallis, OR 97330



CURT EVERSON

It is with great sadness that we forward the news of Curt Everson's passing from cancer on April 11, 2012. He was a long-time member of the GSN who volunteered often and gave of himself whenever and wherever the opportunity arose. He was a good geologist and well respected among his peers. Curt was a great man and we will miss him. Here is a link to the Huntsman Cancer Institute Gift Page if you would like to remember Curt in this way.

www.huntsmancancer.org/giving/how-you-can-help



*Thank you to our
generous donors in April!*

G.S.N. FOUNDATION

Silver Donor

Paul Schmidt

STUDENT DINNER FUND

Del Flint

STUDENT FIELD TRIP FUND

**Kevin Creel
Leslie Creel
Meghan Jackson
Thomas Roberts**

Activity Update

Mike Brady, March 2012

www.activityupdate.com

NEVADA

Yukon-Nevada Gold Corp. announced that it began the commissioning process of its refurbished mill facilities at Jerritt Canyon. *M.J.*: February 3

Yukon-Nevada Gold Corp. announced that recent drill results at the Starvation Canyon Project include 126.57-155.54 meters @ 18.86 gpt Au (TJ-366); 123.5-131.13 meters @ 6.31 gpt Au (TJ-367); 123.52-132.67 meters @ 9.50 gpt Au (TJ-368) and 183.0-199.77 meters @ 12.69 gpt Au (TJ-370). (resource = 364,000 tonnes @ 10.31 gpt Au inferred) *M.J.*: February 3

Gold Standard Ventures Ltd. announced that recent drill results at the Railroad Project include 56 meters @ 4.26 gpt Au (11-16); 10 meters @ 3.03 gpt Au (11-09) and 81 meters @ 0.94 gpt Au (11-03). *N.M.*: March 5

International Minerals Corp. announced that recent drill results at the Gemfield Project include 24.4 meters @ 3.1 gpt Au (G06c); 12.2 meters @ 3.1 gpt Au (G25c); 38.1 meters @ 2.1 gpt Au (G26c) and 50.3 meters @ 1.2 gpt Au (G29c). (resource = 8,636,000 tonnes @ 1.36 gpt Au inferred) *Press Release*: March 20

Yukon-Nevada Gold Corp. announced that recent drill results at the Burns Basin Project include 73.2-102.17 meters @ 2.4 gpt Au (BB-1456); 76.25-97.6 meters @ 4.05 gpt Au (BB-1457); 38.12-48.8 meters @ 8.50 gpt Au (BB-1458) and 53.37-70.15 meters @ 3.16 gpt Au (BB-1464). (resource = 2,030,000 tonnes @ 3.69 gpt Au measured+indicated) *Press Release*: March 21

Pershing Gold Corp. announced that it offered to purchase the Relief Canyon Property from Victoria Gold Corp. for \$2,000,000 and \$4,000,000 in shares. (resource = 4,232,000 tonnes @ 0.75 gpt Au indicated) *Press Release*: March 27

Timberline Resources Corp. announced that it exercised its option and purchased various patented mining claims at its South Eureka Project for undisclosed terms. (resource = 12,374,000 tonnes @ 0.73 gpt Au measured+indicated) *Press Release*: March 14

Scorpio Gold Corp.(70%) announced that recent drill results at the Mineral Ridge Project include 60.98-65.55 meters @ 6.81 gpt Au (MR11340); 33.54-36.59 meters @ 1.05 gpt Au (MR11342); 35.06-41.16 meters @ 5.82 gpt Au (MR11347) and 96.04-99.09 meters @ 0.91 gpt Au (MR11-351). (resource = 4,230,000 tonnes @ 1.47 gpt Au indicated) *Press Release*: March 21

Nevada Copper Corp. announced that recent drill results at the Pumpkin Hollow/North Project include 228.6-237.7 meters @ 0.39% Cu, 0.04 gpt Au (NC11-38); 187.4-230.4 meters @ 0.45% Cu, 0.09 gpt Au (NC11-39); 212.8-295.7 me

ters @ 0.73% Cu, 0.08 gpt Au (NC11-50) and 311.8-350.5 meters @ 3.96% Cu, 0.38 gpt Au (NC12-03). (all = 155,900,000 tonnes @ 0.59% Cu, 0.10 gpt Au measured) *Press Release*: March 13

Midway Gold Corp. announced that based on recent drill results at the Gold Rock/Easy Junior Project, resources aggregate 12,968,000 tonnes @ 0.74 gpt Au indicated and 17,894,000 tonnes @ 0.58 gpt Au inferred. (was 3,345,000 tonnes @ 1.06 gpt Au inferred) *Press Release*: February 29

International Enxco Ltd. announced that recent drill results at the Contact Copper Project include 16.8-45.7 meters @ 0.40% Cu (ENR-15); 25.9-57.9 meters @ 0.15% Cu (ENR-26); 44.2-96.0 meters @ 0.24% Cu (ENR-27) and 36.6-70.1 meters @ 0.31% Cu (ENR-30). (resource = 122,900,000 tonnes @ 0.26% Cu measured+indicated) *Press Release*: March 19

Sniper Resources Ltd. announced that recent drill results at the Weepah Project include 11.1-22.2 meters @ 0.20 gpt Au (WP-16); 14.8-61.05 meters @ 0.25 gpt Au (WP-18); 0-33.3 meters @ 1.17 gpt Au (WP-19) and 0-57.35 meters @ 0.45 gpt Au (WP-20). *Press Release*: March 8

Entrée Gold Inc. announced that based on recent drill results at the Ann Mason Project, resources aggregate 640,000,000 tonnes @ 0.38% Cu, 0.007% Mo indicated and 444,000,000 tonnes @ 0.36% Cu, 0.004% Mo inferred. (was 810,000,000 tonnes @ 0.40% Cu, 0.004% Mo inferred) *Press Release*: March 27

Corvus Gold Inc. announced that recent drill results at the North Bullfrog Project include 177.7-183.4 meters @ 6.56 gpt Au (NB12-126); 105.3-155.1 meters @ 1.01 gpt Au (NB12-127) and 168.8-170.4 meters @ 2.94 gpt Au (NB12-128). (resource = 15,230,000 tonnes @ 0.37 gpt Au indicated) *Press Release*: March 22

Renaissance Gold Inc. announced that recent drill results at the Buffalo Canyon Project include 345.8-349.44 meters @ 0.14 gpt Au (BCR01-11); 85.54-96.46 meters @ 0.28 gpt Au (BCR02-11); 40.04-58.24 meters @ 0.40 gpt Au (BCR04-11) and 54.6-67.34 meters @ 0.63 gpt Au (BCR11-11). *Press Release*: March 26

Lynx Resources Inc. announced that it acquired an option to earn a 70% interest in the Leonid, Pasco Canyon and Gold Star properties from Renaissance Gold Inc. for \$3,000,000 in exploration expenditures over 4 years. *Press Release*: February 29

Max Resource Corp. announced that recent drill results at the Majuba Hill Project include 31.1-323.9 meters @ 0.10 gpt Au, 0.09% Cu (MM-20). *Press Release*: March 15

GSN 2012-2013 ELECTION RESULTS

OFFICERS FOR THE 2012-2013 G.S.N. EXECUTIVE COMMITTEE

PRESIDENT: David Emmons
VICE PRESIDENT: Tommy Thompson
SECRETARY: John Hoskins
TREASURER: Bob Kastelic
MEMBERSHIP CHAIR: Carmen Arbizo
PUBLICATIONS CHAIR: Keith Fowlow



BOARD OF DIRECTORS—Class A: Three Year Term – 2012 to 2015
Lynne Volpi and Randy Vance

Proposed Changes to the GSN Constitution—Passed

WINNEMUCCA CHAPTER OFFICERS FOR 2012-2013

President: Leann Giese
Vice President: Mike Beyer
Treasurer: Randy Vance
Secretary: Peter O'Byrne

ELKO CHAPTER OFFICERS FOR 2012-2013

President: Jared Townsend
Vice President: Josh Sovie
Treasurer: Ajeet Johnson
Secretary: Jon Powell
Membership Chair: Anna Perry

SOUTHERN NEVADA CHAPTER OFFICERS FOR 2012-2013

TO BE ANNOUNCED NEXT MONTH

Thank You!

Please thank our outgoing members who have served the G.S.N. so well!

GSN Mothership: Bill Howald and Mary Stollenwerk

Elko Chapter: Doug Eck, Becky Schow, Erin Newman and Joe Becker

Winnemucca Chapter: Erin Gray, Derick Unger and Merilee Reynolds

Board of Directors: Kim Craig and Peter Vikre

Elko & Winnemucca Chapters' May Meetings

G.S.N. ELKO CHAPTER MEETING

May 17, 2012

“Ore Characterization and Paragenetic Relationships of Breccias and Au Mineralization at the Cortez Hills Carlin-type Gold Deposit, Nevada, USA”

Authors: Lindsey R. Clark¹, Jean S. Cline¹, Adam C. Simon¹

1-University of Nevada Las Vegas

See Abstract on page 3.

NEW HOURS OF OPERATION!!

DUE TO BUDGET CUTS, THE N.B.M.G. Pubs/INFO OFFICE WILL BE CLOSED EVERY MONDAY FROM NOW ON.

LAURA WILL BE WORKING ON MONDAYS AND STILL AVAILABLE BY EMAIL OR PHONE.

CALL IF YOU NEED AN APPOINTMENT ON MONDAY!

G.S.N. WINNEMUCCA CHAPTER MEETING

Wednesday, May 9, 2012

“Mining History of the Carlin Trend: 1875 – 1961”

Dean G. Heitt

Geologist – Newmont Mining Corporation

Abstract:

The Carlin Trend in northeast Nevada is one of the largest gold camps in the world. Over 60 gold deposits have been found since discovery of the Carlin Mine in 1962. But the Carlin Mine wasn't the first “Carlin type” deposit discovered on the trend and the first major gold deposit was discovered 55 years earlier, within sight of the Carlin Mine. Since the 1870's this area produced not only gold but copper, lead, silver, antimony, barite, turquoise and even marble. This is the story of the mines, people and events that came before the Carlin Mine discovery.

ELKO CHAPTER MAY 2012 MEETING SPONSOR



Environmental Services
for the Mining Industry

- Baseline Studies
- Environmental Permitting
- Monitoring & Compliance
- Reclamation & Closure Plans
- Investigation & Remediation

Elko Location
775.738.8766

www.jbrenv.com

creating solutions for today's environment

WINNEMUCCA CHAPTER MAY 2012 MEETING SPONSOR

Exploration & Mining Analytical Services



INSPECTORATE

A Bureau Veritas Group Company

INSPECTORATE AMERICA CORP.
605 BOXINGTON WAY, SUITE 101
SPARKS, NV 89434-8929

Phone: 775.359.6311 * Fax: 775.359.2944

**Thanks to
National Drilling EWP
for sponsoring the
Elko Chapter meeting in April!**

**Thanks to
GEOTEMPS, INC.
for sponsoring the
Winnemucca Chapter
meeting in April!**

G.S.N. ANNUAL GOLF TOURNAMENT—JUNE 23, 2012!!!



Inspectorate America Corporation is pleased to announce the **GSN Annual Golf Tournament 2012** on Saturday, June 23, 2012. Tee time will commence at 1:00 p.m. with a "Shotgun Start" at Lakeridge Golf Course. The tournament is restricted to the first 100 people to enter, so sign up early! Deadline for reservations is Friday, June 15th. To register, you may call Laura Ruud at the GSN office (775) 323-3500, fax (775) 323-3599, or e-mail gsn@gsnv.org. You can register individually, or as a foursome. A fee of \$35.00 per person will include golf, cart and a tri-tip dinner at the Lakeridge Country Club. Non-golfing guests can attend the dinner only for \$10 per person. Mulligan's may be purchased for \$5/each with a limit of four per person. Dinner will follow the tournament and raffle tickets for prizes will be sold at 5/\$20.00 or \$5.00 each. All proceeds raised from Mulligans and raffle tickets will benefit the GSN Foundation. Please join us for a great time and we thank you in advance for supporting the GSN Foundation.

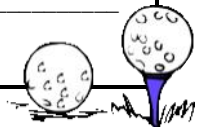
Please provide the following information for each golfer and guest:



Registration Form

Name: _____ Ave. Score: _____
Address: _____
Phone: _____ E-mail: _____
Teamed with: _____

BBQ Guest Name(s): _____
GOLF FEE (\$35/EA): _____ DINNER GUESTS (\$10/EA) _____



Thanks to

INSPECTORATE AMERICA CORPORATION

For Sponsoring and Hosting the GSN Annual Golf Tournament - 2012

*Mark
your
Calendar*

G.S.N. - RENO ACES NIGHT!



The G.S.N. wants to invite you to the first-ever Reno Aces Night event! We have reserved the Coors Party Zone for the **Aces 7:00 p.m. game on Saturday, July 28, 2012**. The evening will include a ticket to the baseball game, hot dogs, BBQ chicken, beans, pasta salad, cookies and soda. The ticket price will probably be \$15/each but this depends on sponsorship. Contact the GSN office if you want to sign up to attend! gsn@gsnv.org.

WHERE IN NEVADA??

MAY CONTEST

1. Where is it ?
2. What is it ?
3. How was it formed ?

Send your entries to Laura no later than Thursday, May 17th, 2012. All entries must be accompanied by your own suggested mystery geology photo taken somewhere in Nevada. The winning entry will be selected at random from among all the correct entries who also submitted a photo and a fabulous prize will be awarded.

Answer to April's "Where in Nevada ?" contest:

Doug McGibbon was the winning entrant, selected at random from the pool of correct entries. He identified April's "Mystery Rock" as a tufa tower south of Gerlach on Highway 447 (on the way to Burning Man), formed by discharging waters from paleo springs into former Lake Lahontan. Doug's "fabulous" prizes were a GSN hat and a book on Battle Mountain gold mineralization.



WOMEN'S MINING COALITION CELEBRATES 20TH ANNUAL FLY-IN TO D.C.!

The Women's Mining Coalition (WMC) has scheduled its 20th annual Fly-In to Washington D.C. for May 6-11, 2012. Since 1993, WMC has been conducting their annual Fly-In to educate our nation's leaders about the importance of a healthy domestic mining industry, helping them to better understand the issues facing the industry and encouraging them to develop fair regulations accordingly.

In 1993 Kathy Benedetto, Debra Struhsacker and Ruth Carraher, all geologists in Reno, Nevada, organized a grassroots group with support from the mining industry which eventually became the Women's Mining Coalition (WMC). Initially the coalition focused on meeting with the newly elected women legislators to educate them about our modern domestic mining industry. Over time the goal changed to educating all of our legislators about the importance of domestic mining.

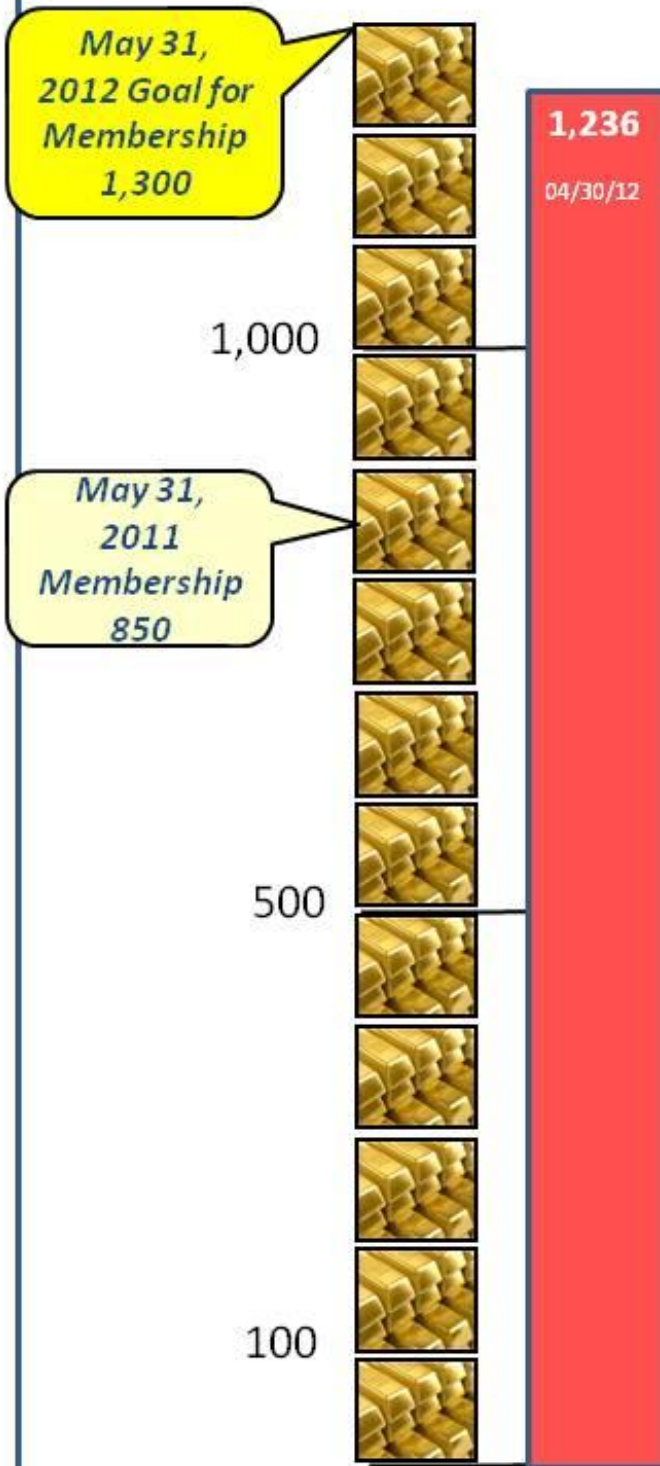
Today, WMC works closely with organizations such as the American Coal Council, the Northwest Mining Association, and the National Mining Association to define each year's issues of importance to the mining industry. WMC has brought varied coal and hardrock mining-related issues to the attention of legislators in Washington during each Fly-In. Past issues have included the Mining Law of 1872, permitting delays, EPA overregulation, the Clean Water Act as it relates to mountaintop mining and Section 4 permits, critical minerals reliance, greenhouse gas regulation, the importance of coal-fired power plants, mine safety, higher education in sciences and engineering, and jobs creation.

During the 2012 Fly-In, essential issues will be discussed with legislators, including critical strategic minerals legislation, the tax in the President's budget on large mine waste disposal facilities, EPA's proposal for financial assurance that duplicates reclamation bonding programs already in place on the state and federal levels, permitting delays that are costing jobs and impeding economic recovery, the possible listing of the sage grouse as an endangered species, BLM's proposed land use restrictions and prohibitions in areas with sage grouse habitat, the utility MACT rule, EPA's proposed greenhouse gas rule, and, as always, jobs creation.

Mining is one of only two industries that have added jobs during the recent economic downturn, alongside the healthcare industry. The mining industry is proud of its contributions to the American economy and the jobs it provides. Each participant in the Fly-In can speak personally of how the mining industry has created employment. All the participants work within the hardrock and coal mining industries, at coal-fired power plants, or for mining-related vendors, suppliers, and manufacturers. Approximately 45 women are scheduled to attend the Fly-In this year, and it is anticipated that over four days, they will meet with more than 170 Congressional offices on both the Senate and House sides.

More information about the Women's Mining Coalition, its goals and mission, and the upcoming and past Fly-Ins is available on the organization's website, www.wmc-usa.org.

Goal for 2012



Geological Society of Nevada Membership Drive

THANK YOU EVERYONE FOR
MAKING OUR 2012
MEMBERSHIP DRIVE A HUGE
SUCCESS!

- Monthly Dinners & Speakers
- Networking/contacts
- Newsletters: 10 per year
- Fall and Spring Field Trips



ROCK TALK

GEOLOGY



What I think I do



What society thinks I do



What my friends think I do

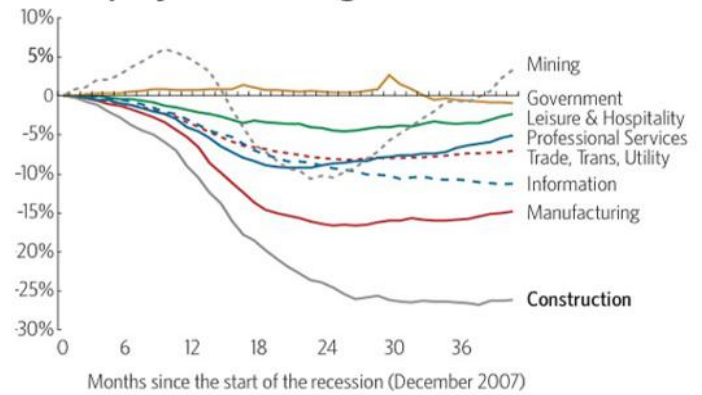


What I actually do

Submitted by Fred Zoerner

MoneyGame  Chart of the Day

U.S. Employment Change From December 2007



Construction employment declined the most during the recession.

“One interesting chart that we'd never seen before: A look at employment creation and destruction by industry since before the recession, in 2007. EVERY category has lost jobs, including government. Construction has obviously gotten killed. The one big stand out winner....mining. “

Reprinted from Business Insider Online Newsletter, 10-11-2011.

Submitted by Mack Taylor

PAID ADVERTISEMENTS

**Manhattan Mining Company –
Goldwedge Project**
a subsidiary of Royal Standard
Minerals, Incorporated

NOW HIRING

Underground Mine Geologist.

Experienced in face and rib sampling, mapping, and structural interpretation.

Narrow vein gold mining experience preferred.

Must have MSHA certification for working underground.

Core logging and interpretation familiarity will be an asset.

Please fax resume to: 1-775-487-2460

ATTN: Ken

ALS Minerals
YOUR TECHNICAL SERVICES PARTNER

CORE VIEWER

- Photo Archival
- Fracture Density Record
- Down-Hole Visual with Data
- On-Line Data Interrogation with Photos

www.alsglobal.com
RIGHT SOLUTIONS RIGHT PARTNER

HARD ROCK WHEELS, INC.

4WD Pickup Rentals

Howard J. Adams
14756 Pine Knolls Lane
Reno, Nevada 89521
(775) 85202622
Fax (775) 852-2075

Taiga Ventures
2700 S. Cushman St.
Fairbanks, Alaska 99701
(907) 452-6631

hardrockwheels@yahoo.com



Chris Ioannakis, Managing Director, Analytical Services

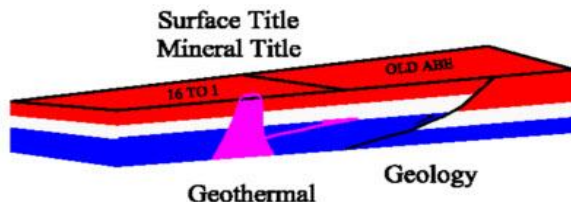
Corporate Office
1500 Glendale Avenue
Sparks, NV USA 89431-5902
Telephone: (775) 356-0606
Fax: (775) 356-1413
Fire Assay, ICP-OES/MS,
XRF, LECO, Custom Prep,
BLEG

Elko Office
2320 Last Chance Road
Elko, NV USA 89801-4852
Telephone/Fax : (775) 738-9100
E-mail: AALADMIN@aallabs.com
Website: www.aallabs.com

G.I.S. Land Services

Greg Ekins M.S. R.P.L. #32306 President
Mineral Landman - Commissioned Abstractor
"From Courthouse Records to Final Map"

Mineral Title, Geothermal Title,
National Instrument (NI) 43-101 Title Review,
Due Diligence
3D AutoCad; ArcMap and MapInfo GIS



A professional firm of
Landmen, Geologists, Draftsmen and Technicians
Providing Abstracts of Title, Land Status and
Exploration Geology Services
Utilizing AutoCad - ArcMap - MapInfo - PowerPoint
www.gislandservices.com

241 Ridge St., Suite 250
Reno, NV 89501
Ph: 775-746-8803 Fax: 775-746-8802
email: greg@gislandservices.com



NEW FRONTIER DRILLING

- SPECIALIZING IN REVERSE CIRCULATION DRILLING FOR THE MINERAL EXPLORATION AND MINING INDUSTRY
- TRACK-MOUNTED RIGS WITH SLIDING/ANGLE MASTS, SOME WITH TILTING DECKS & DOZER BLADES
- LOW ENVIRONMENTAL IMPACT WITH MINIMAL PAD SITE AND ROAD CONSTRUCTION REQUIRED
- RIGS ARE MATCHED WITH LONG TERM HIGHLY TRAINED CREWS ALONG WITH ALL-TERRAIN SUPPORT VEHICLES
- SAFETY PROGRAM WITH MSHA AND OSHA TRAINING

Brian Meyer | Cell: 402.430.6815 | Fax: 866.706.6657
brian@newfrontierdrilling.com | www.newfrontierdrilling.com

JBA WORKS, INC.

Jo Beth Allen
Geologist

Maps & Data
Presentation Graphics

CAD / GIS
Slides / Illustrator & Photoshop / Plots

1055 Joshua Drive
Reno, Nevada 89509

jobeth@jbaworks.com

Office: 775-324-7960
Cell: 775-303-6818



JOSEPH R. ANZMAN
Exploration Geophysicist

- consulting
- interpretation
- project management
- geophysical surveys
- domestic & foreign

P.O. Box 370526
Denver, Colorado 80237
geophjoe@comcast.net

Office: 303-337-4559
Cell: 303-519-0658



Carlin Trend Mining
Supplies & Service

www.carlintrend.com

369 5th St., Elko, NV 89801
(775) 778-0668, Fax: (775) 778-0687, carlintrend@frontiernet.net

Geological Consulting - Claim Staking - Soil Sampling
Geology & Drafting Supplies - AutoCad & GIS
Temporary Employees In All Fields



DIVERSIFIED DRILLING, LLC



Providing Drilling Services To The
Mining/Metals Industry Since 1980

3650 Grant Creek Road
Missoula, Montana 59808
Phone: (406) 542-1010 Fax: (406) 542-5065
www.diversifieddrilling.com

Exploration & Mining Analytical Services



INSPECTORATE

INSPECTORATE AMERICA CORP.

605 BOXINGTON WAY, SUITE 101
SPARKS, NV 89434-8929

Phone: 775.359.6311 * Fax: 775.359.2944
<http://www.inspectorate.com>

Carmen Arbizo-Business Development Mgr
Carmen.Arbizo@Inspectorate.com
Mobile: 775.219.8657

Richard Thorneloe-Technical Director
Richard.Thorneloe@Inspectorate.com
Mobile: 775.691.5832

Dave Williams-Vice President
Dave.Williams@Inspectorate.com
Mobile: 775.848.8025

Chuck Whipple-Senior Account Manager
Chuck.Whipple@Inspectorate.com
Mobile: 775.830.4242

Brian Park-Li-Operations Manager
Brian.ParkLi@Inspectorate.com
Mobile: 775.691.5834

MINIMIZING RISK EVERY DAY
ISO 9001:2008 Certificate #30406



RC Drilling

Dual Tube Reverse Circulation

Dual Tube Flooded Reverse

- Exploration
- Dewatering Wells
- Water Wells
- Directional Drilling
- Monitoring Wells
- Casing Advance

MAJOR

Partners on the Ground



Schramm T130



**Schramm 685
Truck-mounted**



**Schramm 450
Track-mounted**

MAJOR

Partners on the Ground

2200 South 4000 West
Salt Lake City, Utah 84120
801-974-0645
nguyen.do@majordrilling.com
www.majordrilling.com

North American Exploration

Providing service to the Mining industry since 1964



With over 45 years of experience,
we will complete any exploration project,
Anytime! Anywhere!



801-544-3421

North American Exploration, Inc.
447 North 300 West, Suite #3
Kaysville, Utah 84037
Email: nae@nae-xploration.com



Serving Mining in Nevada Since 1992

General Engineering Contractor
Drill Pads
Road Building
Reclamation
Earthwork

Office: 775-753-5832
Mobile: 775-778-1681
Mobile: 775-934-1315
www.legarza.com

NV License #35480
CA License #804120



Big Sky Geophysics

Clark Jorgensen, M.Sc.
Geophysicist

*Field Work
Processing
Interpretations*

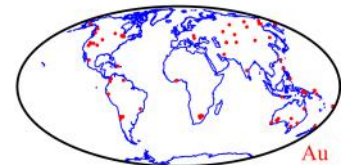
P.O. Box 353
Bozeman, Montana 59771
USA

Phone/Fax +1 (406) 587-6330
Mobile +1 (406) 580-9718
clark@bigskygeo.com

**For more details, my background, and case studies,
visit my webpage at www.bigskygeo.com**

NEVADA EXPLORATION GIS DATA SETS

MINERAL OCCURRENCES
GEOCHEMISTRY
CULTURE
POLITICAL
GEOPHYSICS
GEOGRAPHY
GEOLOGY



website: www.greatbasingis.com
email: jlaravie@frontiernet.net
phone: 775-777-8223



For All Your Analytical Needs

From Exploration Through Development

Skyline is opening a new laboratory at
755 E. Glendale Ave.
Sparks, NV 89431

Skyline has positions available at both our Sparks and Tucson locations for:

- Fire Assayers
- ICP/OES Instrument Technicians
- ICP/MS Instrument Technicians
- Wet Laboratory Technicians

Please email resumes to hr@skylinelab.com
(Please indicate if you are interested in relocating)

www.skylinelab.com

Arizona

Nevada

Mexico

GEOLOGICAL SOCIETY OF NEVADA



gsn@gsnv.org • www.gsnv.org
Telephone (775) 323-3500
Fax (775) 323-3599
2175 Raggio Parkway, Room 107
Reno, NV 89512 USA

HARRIS EXPLORATION

DRILLING & ASSOCIATES, Inc

Exploration Drilling SINCE 1956



Contact: *Pat Harris-* President

Cell (760)822-7886 E-mail: Pharris@harrisexploration.com

Tom Runyon- Operations Manager.

Cell (949)500-9933 E-mail: Trunyon@harrisexploration.com

Office: (760) 741-8890 Fax: (760) 741-8891
Fallon, Nevada Escondido, California

www.harrisexploration.com

We Know Drilling!