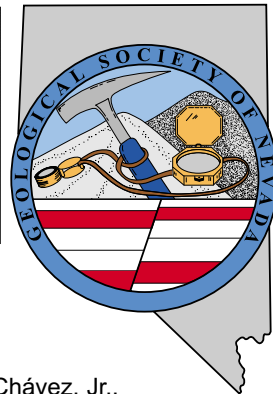


GSN NEWSLETTER



November 2006, Vol. 21, No. 9

Published monthly except June and July

PRESIDENT

Ellie Davie Leavitt
Western Energy Development Corp.
zoracdavie@aol.com

VICE PRESIDENT

Gregory Hill
Harvest Gold Corp. (US)
hillgreg@charter.net

SECRETARY

Leslie Olmstead
Agnico-Eagle (USA) Limited
lolmstead@agnico-eagle.com

TREASURER

Camille Prens
Mine Development Associates
cami@mda.com

MEMBERSHIP CO-CHAIRS

Greg McN. French
Consulting Geologist
GMcNFrench@aol.com

Opal Adams

Enviroscientists, Inc.
ofadams@enviroincus.com

PUBLICATION CO-CHAIRS

Marilyn Miller
Consulting Geologist
marilyn.miller1@sbcglobal.net

Debbie Schneider

Schneider and Schneider Assoc
dschneider41@charter.net

OFFICE MANAGER

Laura Ruud
gsn@mines.unr.edu

CALENDAR OF GSN EVENTS

- Nov. 8
Wednesday** WINNEMUCCA CHAPTER MEETING. Speaker: William X. Chávez, Jr., Professor of Geological Engineering, New Mexico School of Mines. Title: "Supergene Metals Mobility and Accumulation: Examples of Ore-Forming Processes and Ore Deposits in Arid Terrains". The Martin Hotel, W Railroad and Melarkey Streets. Drinks at 6:30 pm, presentation at 7:00 pm. Sponsored by Geotemps, Inc. Contact Ivan Johnston, Chapter President, for more info, 775/635-4292, Ivan.Johnston@Newmont.com. See abstract on page 8.
- Nov. 16
Thursday** ELKO CHAPTER MEETING. Speaker: Richard Hipsley, Barrick Gold Exploration Inc. Topic: South Arturo Project. Western Folklife Center, 501 Railroad Street, Elko, NV. Drinks at 6:00 pm with the talk at 7:00 pm. Contact Richard Reid, Chapter President, at 775/778-3912, Richard.Reid@newmont.com for more information. See abstract on page 8.
- Nov. 17
Friday** GSN MEMBERSHIP MEETING. Speaker: Greg Ferdock, CGF Geological Consultants. Title: "Geology of the Mt. Hope Molybdenum Deposit, Eureka County, Nevada". Reno Elks Lodge, 597 Kumle Ln, Reno, NV. Drinks at 6 pm, dinner at 7 pm (\$17), talk at 8 pm. Contact Laura Ruud for reservations, 775/323-3500 or gsn@mines.unr.edu.
- Nov. 30
Friday** SO NEVADA CHAPTER MEETING. Speaker: Dr. Bruce Crow, *tentative title*: "Volcanism in the vicinity of Yucca Mountain". UNLV Lily Fong Geoscience Building, Room 105, refreshments at 6 pm, talk at approx. 6:30 pm. Contact Bruce Hurley, Chapter President at 702/295-1284, rocks2bwh@aol.com. See abstract on page 11.
- Dec. 13
Wednesday** GSN CHRISTMAS MEETING & ROCK RAFFLE/SILENT AUCTION. Speaker: Dr. Rich Schweickert, UNR Dept of Geological Sciences. Title: "Neotectonics of the Tahoe Basin: Implications for Landslides and Tsunamis". Reno Elks Lodge, 597 Kumle Ln, Reno, NV. Drinks at 6 pm, dinner at 7 pm (\$20), talk at 8 pm. Silent Auction and Raffle will be going on from 6 – 9 pm. Contact Laura Ruud for reservations, 775/323-3500, gsn@mines.unr.edu

Geological Society of Nevada, PO Box 13375, Reno, NV 89507 USA, 775/323-3500, www.gsnv.org
Office location: Laxalt Mineral Research Center, Rm 266, UNR. Hours: Mon thru Fri, 1-4 pm

FROM THE PRESIDENT

Ellie Davie Leavitt, *GSN President 2006-2007*

Gold lured a sellout crowd to the October 20th membership meeting in Reno. Dave Emmons provided a succinct overview of the remarkable world class Round Mountain deposit to an attentive audience. A series of excellent photos and diagrams portrayed the relatively straightforward geology. A picture of an approximately 50 pound chunk of gold really wowed the crowd! Seventeen students attended this meeting; thank you for your continued contributions to the student dinner fund, and to Lance Taylor of **Geotemps, Inc.** for sponsoring student memberships. Adding to the festive atmosphere was the bar sponsored by **American Assay Labs**; thank you, George Burke, Chris Ioannakis, and staff for your support.

October was a busy month starting with the GSN family picnic at Rancho San Rafael. After an excellent meal,

many of the 60+ attendees were game for sack races, 3-legged races and the gold pan, hammer, and egg toss competitions. During the latter event, a few eager participants

continued on page 2

NOVEMBER MEETING SPONSOR



**BOART LONGYEAR/
LANG EXPLORATORY DRILLING**

A division of Boart Longyear Company

2745 W. California Ave., Salt Lake City, UT 84104-4579
(801) 973-6667 • FAX (801) 973-4572

3707 Mazanita Drive Elko, Nevada 89801
(775) 753-8710 • FAX (775) 753-5278



News and Announcements

were slow to catch on to warnings of cracks, resulting in (self-inflicted) egging. D.D. LaPointe and Rachel Dolbier did a great job of orchestrating the games, and Steve Castor's culinary skills once again met muster (see article). The following weekend, the Nevada Bureau of Mines and Geology led field trips for the general public along the Truckee River Corridor, with many GSN members in attendance (see article). Junior (future?) geologists seemed especially enthusiastic, learning important skills including how to hammer rocks and not have them land in the next county, and the proper use of sample bags (no, not over your head!). Even seasoned geologists gained an appreciation of the geology of an area that we drive through more times than we like to count, as well as a realization that we have skills to pass down to future generations of earth scientists. The road log can be found at the following NBMG link: <http://www.nbmng.unr.edu/esweek/trip6.pdf>.

October will end with the Fall Field Trip to Bald Mountain and the Eureka area. As of this writing, the trip is still hotly anticipated. It's full to overflowing, with a growing waiting list. If you are unable to attend, there are more trips coming up! The Northwest Mining Association (NWMA) and GSN are jointly organizing field trips that will follow the NWMA conference in Reno, December 4-8. Leslie Olmstead, Ruth Carraher, and Dave Caldwell of GSN, in conjunction with NWMA, have assembled a remarkable set of trips in an equally remarkable short time, with the cooperation of numerous mines, and exploration and consulting groups. These trips promise to be world-class, and I encourage you to sign up before they're full. See page 10 of this newsletter for more information or visit www.nwma.org to register.

The diversity of commodities sought (and produced) in Nevada is exciting! Monthly updates on exploration are provided in our newsletter, many thanks to Mike Brady! November's membership meeting will host a talk by Greg Ferdock on Mt. Hope, a porphyry-hosted molybdenum deposit north of Eureka. Be sure to mark the GSN Christmas party, Wednesday, December 13th, on your calendars! It's not too early to donate raffle prizes and items for the silent auction. GSN relies on the support of its members! Stay posted and we'll see you at the next membership meeting, Friday, November 17th!

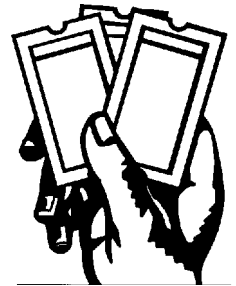
**Thanks to American Assay &
Environmental Laboratories
for hosting the October meeting.**

GSN Holiday Party

ROCK RAFFLE ITEMS NEEDED!! December 13, 2006

D.D. LaPointe
GSN Foundation Trustee and Education Co-Chair
Rachel Dolbier
GSN Education Co-Chair

It's time to think about donating items for the Geological Society of Nevada Foundation's fundraiser "Rock Raffle and Silent Auction" to be held at our annual Christmas meeting on December 13. We are seeking donation of any items suitable for raffle – gift baskets, attractive rock or mineral samples, gems or gemstones, jewelry, wine or other spirits, logo items, geological equipment or publications, commemorative coins, GOLD, or any geology or mining-related items will be gratefully accepted.



Raffle proceeds support GSN's educational projects, which include grants to Nevada K-12 classes for transportation on earth science related field trips, scholarships to UNR and UNLV geology students, grants to the UNR DeLaMare Library, and grants for geologic mapping in Nevada.

Donors will have their names displayed on signs at the event as well as having their names listed in the January newsletter. The GSN Foundation is a 501(c)(3) public charity, tax ID # 88-0447867. Please send donated items to D.D. LaPointe at the following address to arrive before the December meeting date, or call to arrange pick-up of donated items if you are in the Reno-Sparks-Carson City area.

Thank you for your support!

D.D. LaPointe
NV Bureau of Mines and Geology/MS178
University of Nevada, Reno
Reno, NV, 89557-0088
Phone: (775)784-6691, ext.134, FAX: (775)784-1709
e-mail: dlapoint@unr.edu

Rachel Dolbier, Administrator
W.M. Keck Earth Science and Mineral Engineering Museum
MS 168/University of Nevada, Reno
Reno, NV 89557
(775)784-4528 phone (775) 784-1766 fax
<http://mines.unr.edu/museum>

GSN November 17, 2006 Membership Meeting

Date: Friday, November 17, 2006

Time: Social-6:00, Dinner-7:00 (\$17), Meeting-8:00

Reservations: 775/323-3500; fax 323-3599,
e-mail gsn@mines.unr.edu

Deadline: Reserve by 1 pm Thursday, November 16th

Location: Elks Lodge, 597 Kumle Lane, Reno, NV

Directions: Across (W) from the Reno-Sparks Convention Center (S Virginia St), behind the Les Schwab Tire Center

Speaker/topic: Greg Ferdock, CGF Geological Consultants
See abstract below.

GEOLOGY OF THE MT. HOPE MOLYBDENUM DEPOSIT, EUREKA COUNTY, NEVADA

Greg Ferdock, CGF Geological Consultants

The Mt. Hope molybdenite porphyry deposit is located 35 km north of the town of Eureka, Nevada within the old Mt. Hope zinc mining district. The deposit is hosted within the 38 Ma Mt. Hope rhyolite volcanic-intrusive complex and metamorphosed siliciclastic rocks of the Ordovician Vinini Formation. There are at least two lobes of rhyolite-granite at depth with the molybdenite mineralization forming haloes in the shape of inverted tea cups along the contact margins of these intrusions. Where this mineralization overlaps grades increase substantially (to locally in excess of 0.3% molybdenum). A third lobe, at depth, has been inferred from a lone drill hole which intersected high grade mineralization (0.1% to 0.2% molybdenum) on the east side of the deposit.

Alteration is similar to that encountered in many other porphyry systems: a silica rich core, surrounded by potassic and phyllic alteration. A weak propylitic halo is identified distal to and overprinting these alteration phases. Argillic alteration is limited to near surface expressions of the deposit and in some of the structural zones. Structurally the deposit is rather simple with only a few cross-cutting features, and only one with significant offset, the Mt. Hope fault, an arcuate shaped normal fault with approximately 300 meters of normal displacement.

Mining first commenced on the property in the 1870's after zinc ore was discovered on the surface by Basque who were manufacturing charcoal from the local forests for the mines in Eureka. The Mt. Hope mining district was formed, and underground operations produced zinc, copper, lead and silver sporadically up until production ceased in 1947. Nearly 9,000 feet of workings were developed in the nearly 70 years of intermittent life of the district. In the late 1970's geologists from Asarco, Phillips and Exxon examined the property and identified it as a potential porphyry deposit. It was extensively drilled in the early 1980's by Exxon, who took it though an EIS but ceased work after collapse of molybdenum prices. The property remained idle until acquired by Idaho General Mines, Incorporated in 2005.

The current owner of the project, Idaho General Mine, incorporated in Spokane, Washington, is in the permitting phase of putting the deposit into production in the 4th quarter of 2009 or first quarter of 2010. The company is poised to become a major supplier TMO by 2010, supplying 10% of the world market. Mine life, at current estimates, is expected to be 53 years at a production rate of 40 kt per day.

The mine plan is based on \$7.00 per pound molybdenum, with production costs at \$4.07 per pound. Capital development costs are currently hovering around the \$500 million mark. Current designs call for the development of a conical pit, 1.5 km in diameter and 1 km deep. Plans call for a sustained labor force of about 250 personnel.

The deposit contains 920 million tons grading 0.069% molybdenum metal or 1.28 billion payable pounds of molybdenum based on 165 drill holes and 230,000 feet of core. At present the ore body is open to the north, northeast, southeast and at depth. There is potential to recover zinc, lead, silver and copper from the property.

AIPG Christmas Meeting

Kel Buchanan

The 17th Annual AIPG Exploration Roundup will be held Tuesday, December 12, 2006, at the Holiday Inn, 6th Street, Reno from 6:00 to 10:00 PM. Eklund Drilling is sponsoring the cocktail hour and students and Mark Stock, Global Hydrogeologic Services, is providing specimen door prizes. Dinner is at 7:00 and the program begins at 8:00. Ten speakers from a variety of mining and exploration companies will give a short presentation on their plans and programs. We have space for about 100 people so register early.

Cost: \$40.00, Students, \$5.00

Reservations: Kel Buchanan, 786-4515, fax 786-4324, e-mail - summitcrk@aol.com

Thank you to our generous donors

GSN Foundation

SILVER LEVEL DONORS \$100 - \$499

Ken Ainsworth
Ann Carpenter
Tom Carpenter
Edward Chipp

Frank Fenne
Lew Gustafson
Liang Chi Hsu
Joseph Kizis, Jr.

Patrick Mohn
Sandra Powers
Howard Shafer
William Wulfange

BRONZE LEVEL DONORS Up to \$100

Steve Barnwell
Keith Bettles
Mac Canby
Mitch Casteel
Kim Craig
Graeme Davis
Ted DeMatties
Gary Fechko
Jack Frost
Virginia Gillerman

Roger Hulstein
Richard Jeanne
D.D. LaPointe
Maureen Leshendok
Walter Lienhard
David Lorge
Marilyn Miller
Joe Polovina
Jose Portacio, Jr.
Brock Riedell

Michael Ressel
John Schaff
Shea Clark Smith
Debra Struhsacker
Kip Tonking
David Valentine
Mike Visher
Jesse Wellman
Nancy Wolverson

Student Dinner Fund

Anonymous Donor
Ken Ainsworth
Keith Bettles
Alan Branham
Ann Carpenter
Tom Carpenter
Bill Christiansen
Tom Cordova

Greg French
Lew Gustafson
Roger Hulstein
Larry Lackey
Larry Larson
Tom Leshendok
Marilyn Miller
Patrick Mohn

Debra Struhsacker
John D. Taylor
Kip Tonking
Mike Visher
Steven Weiss
Dana Willis



EARTH SCIENCE WEEK

D.D. LaPointe, *GSN Education Co-Chair*

Thank you to all GSN members who accompanied us on the 2006 NBMG Earth Science Week public field trip "Rockin' Along the River" the weekend of October 7th and 8th. We had a total of more than 150 people in more than 40 vehicles participate on both days combined, and a record turn-out of GSN geofolks.

Besides those who cooperated to help lead the trip – Jon & Beth Price, Dave Davis, Rachel Dolbier, Jim Faulds, and Mike Visher, many other GSN members

gave of their time and talents to attend and help answer questions along the Truckee corridor trek: Richard Bedell, Dave Boden, Steve Carroll, Mario Desilets, Larry Garside, Don Hudson, Ellie Leavitt, Maureen & Tom Leshendok, Marilyn Miller, Pat Mohn, Laura & Eric Ruud, Rick Schwarz, and Neil Upchurch. Thanks also to Dave Shaddrick and Golden Odyssey Mining, Inc., who generously provided sample-collecting bags for all participants.

We visited *jokelhaups*-transported boulders, a lahar deposit, a landslide, fluvial features, and volcanic rocks new and old. In keeping with the national theme of Earth Science Week, "Be a Citizen Scientist," we encouraged people to look at outcrops the way geologists do in order to ask questions about and find answers to questions about Earth history. A great time was had by all and many thanks to those who helped make this educational community service project a success.

ACTIVITY UPDATE

Mike Brady, September 2006
www.activityupdate.com

NEVADA

Goldcorp Inc. announced that it offered to acquire Glamis Gold Ltd. through a share exchange on the basis of 1.0 share Goldcorp/1.96 share Glamis valuing Glamis at \$51.41/share or a total value of \$7,800,000,000.

W.S.J.: September 1

Newmont Mining Corp. announced that reserves at the Midas Mine aggregate 1,500,000 tons @ 0.580 opt Au, 7.33 opt Ag proven+probable. (was 2,900,000 tons @ 0.510 opt Au, 6.21 opt Ag proven+probable)

2005 Annual Report

Newmont Mining Corp.(25%) announced that reserves at the Turquoise Ridge Mine aggregate 1,900,000 tons @ 0.560 opt Au proven+probable. (was 1,700,000 tons @ 0.610 opt Au proven+probable)

2005 Annual Report

Klondex Mines Ltd. announced that based on recent drill results at the Fire Creek Project, resources aggregate 1,760,000 tons @ 0.582 opt Au indicated. (was 556,300 tons @ 0.720 opt Au inferred)

Press Release: September 5

Canyon Copper Corp. (was Aberdene Mines Ltd.) announced that recent drill results at the New York Canyon Project include 0-115 feet @ 0.403% Cu (06-5R); 0-160 feet @ 0.285% Cu (06-6R); 0-30 feet @ 0.240% Cu (06-7R); 0-300 feet @ 0.344% Cu (06-8R) and 0-230 feet @ 0.612% Cu (06-9R). (resource @ Longshot Ridge = 16,100,000 tons @ 0.55% Cu)

Press Release: September 1

AuEx Ventures Inc. announced that recent drill results at the Long Canyon Project include 90-140 feet @ 0.040 opt Au (LC-015); 20-30 feet @ 0.010 opt Au (LC-016); 75-100 feet @ 0.014 opt Au (LC-017); 115-160 feet @ 0.585 opt Au (LC-018); 35-120 feet @ 0.092 opt Au (LC-020); 5-35 feet @ 0.109 opt Au (LC-023); 20-60 feet @ 0.048 opt Au (LC-024); 5-25 feet @ 0.037 opt Au (LC-025) and 55-135 feet @ 0.074 opt Au (LC-028).

Press Release: September 21

Barrick Gold Corp. announced that reserves at the Goldstrike Open-Pit operations aggregate 114,512,000 tons @ 0.128 opt Au proven+probable. (was 123,334,000 tons @ 0.131 opt Au proven+probable)

2005 Annual Report

Barrick Gold Corp. announced that reserves at the Goldstrike underground operations aggregate 7,318,000 tons @ 0.279 opt Au proven+probable. (was 7,575,000 tons @ 0.392 opt Au proven+probable)

2005 Annual Report

Pan-Nevada Gold Corp. announced that recent drill results at the Jessup Project include 60-65 feet @ 1.632 opt Au (JP06-50C); 315-375 feet @ 0.085 opt Au (JP06-47C); 147-152 feet @ 0.068 opt Au (JP06-48C); 185-190 feet @ 0.020 opt Au (JP06-49C); 106-131 feet @ 0.040 opt Au (JP06-51C) and 70-105 feet @ 0.031 opt Au (JP06-53C). (resource = 8,370,000 tons @ 0.025 opt Au, 0.25 opt Ag inferred)

Press Release: September 18

Midway Gold Corp. announced that recent drill results at the Spring Valley Project include 92-108 meters @ 0.078 opt Au (SV06-192); 233-235 meters @ 0.025 opt Au (SV06-193); 95-107 meters @ 0.024 opt Au (SV06-194); 90-98 meters @ 0.015 opt Au (SV06-195); 223-231 meters @ 0.035 opt Au (SV06-196) and 107-115 meters @ 0.178 opt Au (SV06-197). (resource = 10,030,000 tons @ 0.024 opt Au measured+indicated)

Press Release: September 21

Queenstake Resources Inc. announced that recent underground drill results at the SSX-Steer Project include 385-420 feet @ 0.628 opt Au (SX-995); 380-395 feet @ 0.610 opt Au (SX-997); 365-380 feet @ 0.365 opt Au (SR-080); 15-60 feet @ 0.225 opt Au (Z50743); 0-15 feet @ 0.431 opt Au (Z50750) and 0-50 feet @ 0.330 opt Au (Z50837).

Press Release: September 13

Miranda Gold Corp. announced that recent drill results at the Redlich Project include 330-360 feet @ 0.012 opt Au (79); 430-440 feet @ 0.010 opt Au (80); 125-135 feet @ 0.023 opt Au (82); 250-290 feet @ 0.011 opt Au (83) and 275-280 feet @ 0.440 opt Au (84).

Press Release: September 27

Miranda Gold Corp. announced that recent drill results at the Horse Mountain Project include 926.2-1,024.4 meters @ 0.023 opt Au (BHM-001).

Press Release: September 27

GSN Newsletter Monthly Advertising Rates

Business card size (3 1/2 x 2'')	\$ 50.00
Quarter page (3 1/2 x 4 3/4'')	150.00
Half page (4 3/4 x 7 1/2'')	300.00
Classified ads \$10/line (up to business card size)	

For an advertising form, call the GSN office at 775/323-3500 or fax 323-3599. Digital or text ads must be received by the 20th of the month to appear in the following month's newsletter. Submit digital files exported as a PDF, JPEG, TIFF, EPS, or PICT with preview.



**Carlin Trend Mining
Supplies & Service**

www.carlintrend.com

369 5th St., Elko, NV 89801
(775) 778-0668, Fax: (775) 778-0687, carlintrend@frontiernet.net

Geological Consulting - Claim Staking - Soil Sampling
Geology & Drafting Supplies - AutoCad & GIS
Temporary Employees In All Fields



DIXIE BULLOCK
DISTRICT MANAGER

412 NORTH MCCARRAN BLVD.
SPARKS, NV 89431

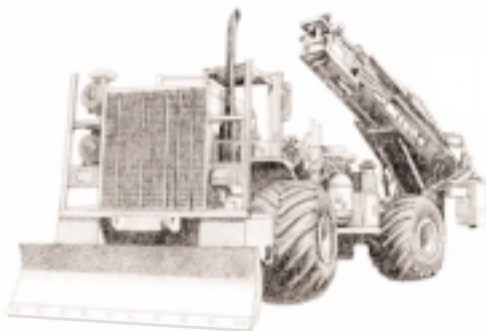
WILMA HATTER
SERVICE REPRESENTATIVE
HATTERW@SOSSTAFFING.COM

T. 775.331.5227 F. 775.323.7772
WWW.SOSSTAFFING.COM

A Division of SOS Staffing Services, Inc.



DIVERSIFIED DRILLING, LLC

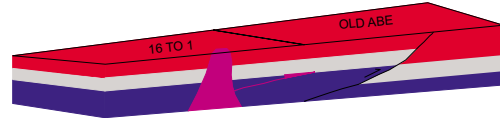


*Providing Drilling Services To The
Mining/Metals Industry Since 1980*

3650 Grant Creek Road
Missoula, Montana 59808
Phone: (406) 542-1010 Fax: (406) 542-5065
www.diversifieddrilling.com

GIS Land Services

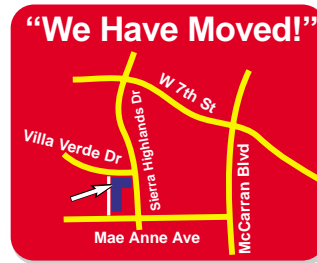
Greg Ekins M.S. R.L.P. #32306 President
Mineral Landman - GIS Cartographer



Surface Title
Mineral Title

"From Courthouse Records to Final Map"

- Land Status Maps
- Geologic
- Geo Chem
- AutoCad Map
- Arc Map
- Mapinfo
- Discover
- Power Point



5365 Mae Anne Ave B-14A
Reno, NV 89523
P:775-746-8803
P:775-746-2110
F:775-746-8802
E:greg@gislandservices.com

www.gislandservices.com

Big Sky Geophysics

Clark Jorgensen, M.Sc.
Geophysicist

*Field Work
Processing
Interpretations*

P.O. Box 353
Bozeman, MT 59771
USA

Phone: (406) 587-6330
Fax: (406) 587-6394
Mobile: (406) 580-9718
clark@bigskygeo.com

**For more details, my background, and case studies,
visit my webpage at www.bigskygeo.com**



Enviroscientists, Inc.

4600 Kietzke Lane, Suite C 129, Reno, Nevada 89502
Phone: (775) 826-8822 Fax: (775) 826-8857

**Notices, Plans of Operations,
Cost Estimates, TRI, Biological Surveys,
Air Quality Permits & Audits**

Info@enviroincus.com

www.enviroincus.com



**ENVIRONMENTAL SERVICES
FOR THE MINING INDUSTRY**

- Baseline Studies
- Environmental Permitting
- Monitoring & Compliance
- Reclamation & Closure Plans
- Investigation & Remediation

**Elko Location
775-738-8766**

www.jbrenv.com Reno and Salt Lake City locations



**WESTERN RECON
and
Mineral Exploration Inc.**

**Claim Staking / Soil Sampling / Grids
Experienced / Dependable/ Trimble GPS**
Gary Castagne 775-250-4879
John Fernandez 775-815-2587

www.westernrecon.com

Jo Beth Allen
Professional Graphics

CAD Drafting/Digitizing/Scanning
High Resolution Presentation Graphics
Plotting/Printing
Geologist

1055 Joshua Drive
Reno, Nevada 89509

Phone: 775-324-7960
Fax: 775-324-7583

jobeth@yellowsb.net

Fire Assay
ICP - OES
ICP - MS
AAS
Custom Preparation
Bullion Analyses
BLEG

Corporate Office
1500 Glendale Avenue
Sparks, NV U.S.A. 89431-5902
Telephone (775) 356-0606
Fax (775) 356-1413

Chris Ioannakis, Managing Director,
Analytical Services



**American
Assay &
Environmental
Laboratories**

Elko Office
2320 Last Chance Road
Elko, NV U.S.A. 89801-4852
Telephone/Fax (775) 738-9100

E-mail: AALADMIN@aallabs.net
Website: www.aallabs.com

ALS Chemex



We are a global analytical testing company serving the mining and mineral exploration industry in Nevada and around the world.

We specialise in:

- Assaying and geochemical analysis for mining and mineral exploration projects
- On-site contract mine laboratory management
- Environmental monitoring of mining operations
- Acid mine drainage studies

Contact our laboratories in Nevada to find out how we can help you with all of your project's analytical needs.

RENO, NV
Phone: 775 356 5395

ELKO, NV
Phone: 775 738 2054

WINNEMUCCA, NV
Phone: 775 625 4192

www.alschemex.com

*Right solutions....
....Right partner*

sample Bags

HUGE INVENTORY

LOW, LOW PRICES



NEW ADDRESS!
LEGEND, INC.

988 Packer Way
Sparks, NV 89431

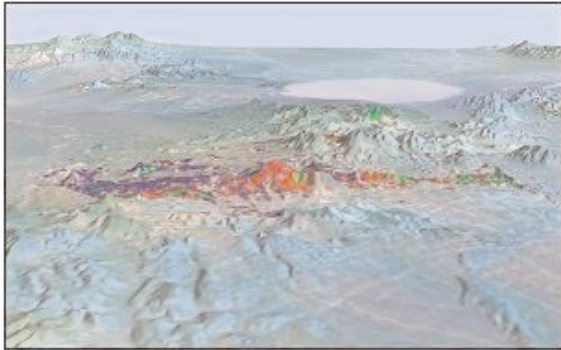
Off Glendale east of McCarran
phone: (775) 786-3003
fax: 786-3613
www.Lmine.com
email: info@Lmine.com

MINERAL EXPLORATION SERVICES

**SOIL SAMPLING
CLAIMSTAKING
PROPERTY EVALUATION
MINE HAZARD FENCING**

5655 Riggins Ct., #15, Reno, NV 89502
Tel: (775) 954-1082 Fax: (775) 829-6882
email: day@mineralexploration.com

EXPLORATION with ASTER



Alteration Image, Goldfield, Nevada

- **CUSTOM CORRECTED DATA**
- **ALTERATION IMAGERY**
- **EXTENSIVE GLOBAL ARCHIVES**

WWW.ASTERIMAGES.COM
 email: pusa@rmi.net
 dwc@overhill-imaging.com

RENT A PIMA!!



IDENTIFY and MAP ALTERATION
 MINERALS IN THE FIELD and CORE

CONTACT US FOR Rentals and Services

Spectral International, Inc
 303 403 8383 pusa@rmi.net
 www.specmin.com

WINNEMUCCA CHAPTER NOVEMBER 8th MEETING

SUPERGENE METALS MOBILITY AND ACCUMULATION: EXAMPLES OF ORE-FORMING PROCESSES AND ORE DEPOSITS IN ARID TERRAINS

William X. Chávez, Jr., Professor of Geological
 Engineering, New México School of Mines

Metals mobility during weathering has a significant influence on the interpretation of surface and near-surface exploration geochemical survey results, and such mobility and metals redistribution may produce economic accumulations of transition and precious metals under appropriate conditions of oxidation-leaching-redeposition. Supergene solutions responsible for metals transport also alter source rocks and ultimate metals hostrocks to characteristic, generally low-pH and sulfate-stable, mineral assemblages.

The weathering of sulfide-bearing protoliths, even those of low metals concentration, may nonetheless yield economically-significant ore deposits; this is especially notable for mineral occurrences in terrains that experience cyclical, temperate-climate weathering and that have locally favorable fault block movements that permit protolith exposure-enrichment-preservation. Development of a mature geochemical stratigraphy does not ensure economic metals accumulation, but is necessary for such.

Well-developed supergene enrichment profiles display consistent and predictable metals and mineral zoning, even within a distinct geochemical environment. Examples of leached capping, oxide zone, and metals accumulation zones from porphyry systems demonstrate the internal zoning of orebodies developed from enhanced weathering-related metals mobility and accumulation in temperate environments.

ELKO CHAPTER NOVEMBER 16th MEETING

SOUTH ARTURO

Richard Hipsley, Paul Dobak and Dave Arbonies
 Barrick Gold Exploration Inc.

South Arturo is a "Carlin-type", breccia-hosted, oxide gold deposit located at the north end of the Carlin Trend. The discovery hole was drilled in August 2005 from mine dumps 1,000 ft south of the Dee open pit. Discovery hole (BD-72) encountered a cumulative 245 ft @ 0.056 opt Au beneath 850 ft of post mineral Tertiary Carlin Formation. Oxidation extends to depths greater than 2,000 ft in the deposit area. The deposit is presently in definition drilling stage with 100,000 ft of drilling completed to date. A resource estimate is in progress. This paper will focus on the discovery and descriptive characteristics of the mineralization.

UPCOMING EVENTS

Nov 2, Thursday – NV Petroleum Society Meeting. Speaker: Bill Ehni, Geologist, Ehni Enterprises, Title: "Petroleum and Geothermal Activity in Nevada". Austin's Restaurant, 7671 South Virginia St, Reno, cocktails at 6:30 pm. Dinner at 7:00 pm. (\$17 for members; \$19 for non-members). Contact Diane Phillips for reservations. 775/267-4663, email: trailsend@pyramid.net.

Nov 6-11 – Alaska Miners Association 2006 Annual Convention & Trade Show, "Energizing Alaska's Mineral Industry". Sheraton Anchorage Hotel. Phone: 907/563-9229, email: ama@alaskaminers.org, www.alaskaminers.org.

Nov 8, Wednesday – WINNEMUCCA CHAPTER MEETING – Speaker: William X. Chávez, Jr., Professor of Geological Engineering, New Mexico School of Mines. Title: "Supergene Metals Mobility and Accumulation: Examples of Ore-Forming Processes and Ore Deposits in Arid Terrains". The Martin Hotel, W Railroad and Melarkey Streets. Drinks at 6:30 PM, Presentation at 7:00 PM. Sponsored by American Assay Laboratories. Contact Ivan Johnston, Chapter President, for more info, 775/635-4292, Ivan.Johnston@Newmont.com.

Nov 14, Tuesday – Arizona Geological Society Meeting – Speaker: Bob Webb, USGS, & Erik Pytlak, National Weather Service. Title: "Floods and Debris Flows in the Catalina Front Range, July 31, 2006". Inn Suites Hotel, 475 N Granada Ave, Tucson AZ. Call for reservations or more information: 520/663-5295.

Nov 14-16, 2006 – EPA Hard Rock 2006 Sustainable Modern Mining Applications Conference to be held at the Doubletree, Tucson Reid Park in Tucson, Arizona. This conference will provide participants with an opportunity to examine and discuss current and future environmental issues which provide sustainable opportunities for efficient extraction and maximum utilization of resources in mining. For more information, contact Alina Martin at 703/318-4678 or by email. Email: tcs-events@saic.com <http://www.epa.gov/hardrockmining/hardrock/hardrock2006.htm>

Nov 16, Thursday – ELKO CHAPTER MEETING: Richard Hipsley, Barrick Gold Exploration Inc., Topic: South Arturo Project. Western Folklife Center, 501 Railroad Street, Elko, NV. Drinks at 6:00 pm with the talk at 7:00 pm. Contact Richard Reid, Chapter President, at 775/778-3912, Richard.Reid@newmont.com for more information.

Nov 17, Friday – GSN MEMBERSHIP MEETING: Speaker: Greg Ferdock, CGF Geological Consultants, Title: "Geology of the Mt. Hope Molybdenum Deposit, Eureka County, Nevada". Reno Elks Lodge, 597 Kumle Ln, Reno, NV. Drinks at 6 pm, dinner at 7 pm (\$17), talk at 8 pm. Contact Laura Ruud for reservations, 775/323-3500 or gsn@mines.unr.edu.

Nov 30, Thursday – SO NEVADA CHAPTER MEETING: Speaker: Dr. Bruce Crow, *tentative title*: - "Volcanism in the vicinity of Yucca Mountain". UNLV Lily Fong Geoscience Building, Room 105, refreshments at 6 pm, talk at approx. 6:30 pm. Contact Bruce Hurley, Chapter President at 702/295-1284, rocks2bwh@aol.com.

Dec 4-8, 2006 – Northwest Mining Associations 112th Annual Meeting, Exposition and Trade Show will be held at John Ascuagas Nugget Casino-Resort in Reno, Nevada. For information, please see the home page on this website or call Pat

Heywood at the NWMA office in Spokane, WA at 509/624-1158. Email: pheywood@nwma.org, <http://www.nwma.org>

Dec 13, Wednesday – GSN CHRISTMAS MEETING & ROCK RAFFLE/SILENT AUCTION: Speaker: Dr. Rich Schweickert, UNR Dept of Geological Sciences. Title: "Neotectonics of the Tahoe Basin: Implications for Landslides and Tsunamis". Reno Elks Lodge, 597 Kumle Ln, Reno, NV. Drinks 6-pm., dinner-7 pm. (\$20), talk-8 pm. Silent Auction and Raffle will be going on from 6 – 9 pm. Contact Laura Ruud for reservations, 775/323-3500, gsn@mines.unr.edu

SOUTH AFRICAN WINE TASTING AND FUNDRAISING EVENT FOR SAIWI

The Student Association for International Water Issues (SAIWI) at the University of Nevada and BK's Wine Storage & Accessories are holding a fundraiser on Saturday, November 4. SAIWI works on international issues of water quality and supply in remote and underdeveloped areas.

This wine tasting will be held from 3-5pm and then again from 5-7pm, and will feature South African wines. There will also be a short slideshow of SAIWI's recent trip to Kenya in June and a silent auction. The cost is \$20 per person, and you keep the glass. You can buy tickets at BK's Wine Storage, or email Harmony Farnsworth (SAIWI Treasurer) at hfarnsw@unr.nevada.edu.

BK's Wine Storage & Accessories is located at 2540 Sutro St, Suite 6, Reno, NV 89512 (just south of Hug High School's football field between McCarran and Oddie Blvds). 775-786-4744, winestoragebks@sbcglobal.net.

GSN MEMBERS' PERSONAL NOTES & NEWS

Career Related Moves

► CGS Personnel has recently moved to a new location in Reno, 390 East Moana Lane, Suite 2, in Independence Square. Our telephone and fax numbers remain the same.

CGS Personnel has been serving the mining and exploration industry for over 15 years. We welcome your business and resumes.

We are having an open house Wednesday, November 14th from 11:00 am until 1:00 pm. Please come by and meet the mayor and enjoy the great food. Hope to see you.

Members are encouraged to keep us informed about their own career related moves and awards, and deaths of GSN colleagues. Your information needs to be received by Laura at gsn@mines.unr.edu by the 21st of each month.

Northwest Mining Association and the Geological Society of Nevada

Fax (509) 623-1241 or mail completed form to Northwest Mining Association prior to November 24, 2006
10 N Post St., Ste. 220, Spokane, WA 99201-0705

POST TECHNICAL SESSION & EXPOSITION FIELD TRIPS

Friday December 8 - Sunday December 10, 2006

All field trips will depart after the close of the Exposition Hall on Friday afternoon December 8 approximately 2:00 p.m. and return on Sunday December 10.

Northwest Mining Association, in conjunction with the Geological Society of Nevada, is happy to be able to offer a variety of field trips as post-convention events. Space is limited for each of these tours and will be assigned on a first come basis. (See paragraph below) Register early to guarantee your space. There is a separate registration form for the field trips, or you may register on-line at www.nwma.org. If you have any questions, please contact Northwest Mining Association – info@nwma.org, or call 509/624-1158 x 10.

For those attending the NWMA Annual Meeting and have a Technical Session badge, the cost per tour is only \$395 per person. This includes transportation from the Nugget, box dinner Friday, box breakfasts and lunches on Saturday and Sunday, dinner Saturday evening, two nights lodging and a guidebook. For those not registering for the technical sessions, the cost is \$500. **NWMA registrants receive 1st priority.**

Tour 1 – limit 40 people

RECLAMATION and CLOSURE TOUR –

bus to Winnemucca, NV

Saturday & Sunday tours of several or all of the following:

Pinson (Atna Resources Ltd. and Barrick Gold Corp.)

Getchell (Barrick Gold Corp.)

Sleeper (New Sleeper Corp. and X-Cal Resources, Ltd.)

Florida Canyon (Jipangu, Inc.)

Rochester (Coeur d'Alene Mines Corp.)

Tour 2 – limit 40 people

METALLURGICAL TOUR – bus to Elko, NV

Carlin Trend Processing – Saturday

Battle Mountain-Cortez Trend Processing – Sunday

Tour 3 – Limit 30 people

GEOLOGIC TOUR – bus to Winnemucca, NV

Sunday's underground tours are limited to 15 each. List 1st & 2nd choice on form.

Pipeline/Cortez Area (Barrick Gold Corp.) – Saturday

Turquoise Ridge Underground Mine (Barrick Gold Corp.)

– Sunday

Getchell Underground Mine (Barrick Gold Corp.) – Sunday

continued on page 11



Jerry Baughman and Tom Nimsic (winners of the egg toss) lining up for competition.

2006 GSN FAMILY PICNIC

Our GSN Family Picnic on Sunday, October 1, was the most attended picnic in a long time. Thanks to all of you for coming out on such a beautiful fall day and making this annual event such a success! We dined on roast pork and tri-trip (thanks to Steve Castor for once again acting as BBQ-meister) and sampled not one, but two kegs of beer (thanks to Cami and Neil Prenn) and enjoyed a plethora of sides and salads that were brought to share. All the food was much appreciated!

We had games for adults but were lacking kids so we only held one round of each game. The following is a list of winners:

Gold Pan Toss: 1st Place Winner – Greg Ekins

Hammer Throw: 1st Place Winners – Jim Leavitt

3-Legged Race: 1st Place Winners - Jerry Baughman & Steve Castor

Sack Race: 1st Place Winners (tie) – Steve Carroll, Vicki Parratt

Egg Toss: 1st Place – Tom Nimsic & Jerry Baughman

Let's keep this wonderful tradition going and plan an awesome picnic for 2007!



GSN President, Ellie Leavitt - "losing" in the egg toss.

Northwest Mining Associations and Geological Society of Nevada *continued from page 10*

Tour 4 – limit 32 people

GEOLOGIC TOUR – bus to Elko, NV

Saturday's underground tours are limited: Rodeo – 20 Smith – 12. List 1st & 2nd choice on form.

Rodeo Underground Mine (Barrick Gold Corp.)- Saturday

Smith Underground Mine (Queenstake Resources Ltd.) – Saturday

Maggie Creek/Gold Quarry (Newmont Mining) – Sunday

Betze/Post (Newmont Mining) – Sunday

**SOUTHERN NEVADA CHAPTER
NOVEMBER 30th MEETING**

**BASALTIC VOLCANIC CYCLES AT THE
SOUTHWEST NEVADA VOLCANIC FIELD**

Bruce Crowe, Battelle

Multiple cycles of basaltic volcanic activity post-date the Miocene major caldera cycles of the Southwest Nevada Volcanic Field with continued episodes of small-volume eruptive pulses in the Pliocene and Quaternary. The waning phase of the eruptive cycle of the Timber Mountain caldera cycle includes voluminous basaltic volcanic activity (cumulative volume > 10 km³) centered mostly near the

southern part of the Timber Mountain caldera (Dome Mountain and temporally associated basalts of Crater Flat, Jackass Flat and the Amargosa Valley; ~ 11 to 9.5 Ma). Subsequent basaltic activity include episodes of small volume (< 3 km³) basaltic volcanism along the northern part of the Silent Canyon ring-fracture zone (~ 9-9.5 Ma), the Yucca-Frenchman Flat basins and adjacent ranges (~ 8.6 to 7.3 Ma) and within the southern part of the Amargosa trough (~ 4.6 to 0.1 Ma). The latter episodes of basaltic volcanic activity have received considerable attention because of their potential impact on a repository for geologic disposal of high-level radioactive waste at Yucca Mountain. Background information will be presented on the methods for developing alternative probabilistic volcanic hazard models for Yucca Mountain.

Dr. Bruce Crowe is a geologist and environmental scientist with Battelle Memorial Institute and is currently the science advisor for the environmental management programs at the Nevada Test Site. Bruce received his B.A. from Fresno State University and his M.S. and Ph.D. from the University of California, Santa Barbara. He worked for 29 years for Los Alamos National Laboratory before joining Battelle. The focus of Bruce's current work is on the development and application of probabilistic performance assessment models for disposal of low-level and transuranic radioactive waste and on the implementation of modeling strategies incorporating uncertainty for evaluating groundwater transport of contaminants at the Nevada Test Site. He is currently a member of the expert judgment panel that is updating the probabilistic volcanic hazard assessment for Yucca Mountain.

DIRECTORY ADS – GOLD PAGES

It is time to get your advertisements in for the 2006/2007 Membership Directory. Don't miss this opportunity to reach your clients. The Directory was distributed to approximately 900 members last year and we are projecting over 1,000 members. The Directory will be published in January 2007. Prices are as follows:

2" x 3 1/2"	Business Card – Horizontal	\$ 50
3 1/2" x 5"	Quarter Page – Vertical	150
5" x 7"	Half Page – Horizontal	300
3 1/2" x 10"	Half Page – Vertical	300
7" x 10"	Full Page – Vertical (Gold Pages)	450
7" x 10"	Opposite, Inside Back Cover – Vertical	600
7" x 10"	Qualified Persons Page	600
7" x 10"	Inside Back Cover – Vertical	700
7" x 10"	Inside Front Cover – Vertical	800
7" x 10"	Outside Back Cover – Vertical	1,000

As in the past, the first complete payment received in the GSN office for a requested location will be assigned that location. Please contact Laura Ruud at the GSN Office, 775/323-3500, or Greg French, GSN Membership Chairman, at 775/856-2422 for more information or to obtain a form.

GEOLOGICAL SOCIETY OF NEVADA



gsn@mines.unr.edu • www.gsnv.org
Telephone (775) 323-3500 FAX (775) 323-3599
Post Office Box 13375
Reno NV 89507
USA

NON PROFIT
ORGANIZATION
U.S. POSTAGE
PAID
RENO, NV
PERMIT NO. 931

**IT IS A TOUGH JOB
BUT SOMEBODY HAS TO
PERMIT IT**

©Enviroscientists

***Specializing in Exploration & Mining Projects
on U.S.F.S., B.L.M., & Private Lands***

Plans of Operations • Notices • Baseline Studies (Biology & Cultural)
Environmental Assessments • Environmental Impact Statements
Permit Mediation & Negotiation

4600 Kietzke Lane, Suite C129
Reno, Nevada 89502
Phone: (775) 826-8822
Fax: (775) 826-8857
www.enviroincus.com



Enviroscientists, Inc.

Environment Resources Management
Striking the BalanceSM