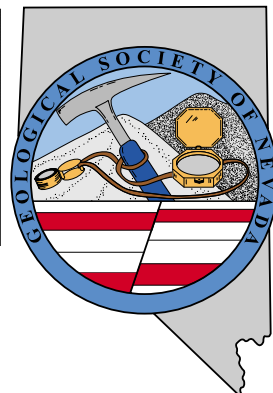


GSN NEWSLETTER

Geological Society of Nevada, PO Box 13375, Reno, NV 89507 USA, 775/323-3500, www.gsnv.org
Office location: Laxalt Mineral Research Center, Rm 266, UNR. Hours: Mon thru Fri, 9-4



November 2007, Vol. 22, No. 9

Published monthly except June and July

PRESIDENT

Greg Hill
Harvest Gold Corp. (US)
hillgreg@charter.net

VICE PRESIDENT

Marcus Johnston
Victoria Resources US Inc
marcus@apexmineralresources.com

TREASURER

Camille Prens
Mine Development Associates
cami@mda.com

MEMBERSHIP CHAIR

Opal Adams
Enviroscientists, Inc.
ofadams@enviroincus.com

PUBLICATION CO-CHAIRS

Marilyn Miller
Consulting Geologist
marilyn.miller1@sbcglobal.net

Debbie Schneider

Schneider and Schneider Assoc
dschneider41@charter.net

OFFICE MANAGER

Rhonda Bayley
gsn@gsnv.org

CALENDAR OF GSN EVENTS

November 14th, Wednesday

WINNEMUCCA CHAPTER: Martin Hotel, beginning at 6:30.

Our speaker is Meghan Jackson from the Cortez mine. The title of her talk is "Breccias: Description and Analysis of Data-Rich Rocks".

November 15th, Thursday

ELKO CHAPTER: Our speaker will be Meghan Jackson from the Cortez mine. The title of her talk is "Breccias: Description and Analysis of Data-Rich Rocks". Sponsored by Inspectorate.

November 16th, Friday

GSN MEMBERSHIP MEETING: Reno Elks Lodge 597 Kumle Ln, Reno, NV. Drinks at 6 pm, dinner at 7 pm, talk at 8 pm featuring Andy Wallace. Sponsored by Harvest Gold. Contact Rhonda Bayley for reservations, 775/323-3500, gsn@gsnv.org.

November 29th, Thursday

SOUTHERN NEVADA CHAPTER: UNLV Students. Brief talks on GSA presentation topics.

**Don't forget to renew your membership.
See page 9 for a form.**

FROM THE PRESIDENT

Greg Hill, *GSN President 2007-2008*

The October monthly membership meeting in Reno was very well attended as Raul Madrid presented a moving and informative tribute to Dr. Ralph Roberts. Dr. Roberts was a giant in the field of Nevada geology and gold deposits. He made groundbreaking contributions such as defining the Antler orogeny and the importance of the Roberts Mountains thrust in many Nevada gold deposits. John Price and Tommy Thompson also presented information about Dr. Roberts and his legacy, including the huge number of gold ounces attributed to Roberts' work and the establishment of the CREG program. Sons Kim and Michael Roberts were in attendance and honored their father by telling us about the family and expressing their love for their father. The tribute and memorial of Dr. Ralph Roberts was quite moving and inspiring to me. He will be missed.

GSN volunteers are busy carrying on the business of the society and planning events. Organization of the upcoming 2010 GSN Symposium is gaining steam and shaping up to be another great meeting, as many geologists around the

NOVEMBER MEETING SPONSOR



HARVEST GOLD CORP.

301 - 260 W. Esplanade, North Vancouver, B.C. V7M 3G7

Tel: 604-986-2020, Fax: 604-986-2021

www.harvestgoldcorp.com

world have grown to expect. Under the guidance of Nancy Wolverson and Eric Ruud, the high standards of the Symposium planning committee are clearly in evidence and

continued on page 2



News and Announcements

FROM THE PRESIDENT *continued from page 1*

the enthusiasm for this event is remarkable. Roger Steininger continues to work hard to build and administer the GSN Foundation and donations are increasing as a result of his effort and the generosity of numerous GSN members. There are many others doing their parts to organize other upcoming events and support the Society. Thanks to all of you!

The November meeting will feature Andy Wallace who will present a history of Cordex and the nearly forty years of successful gold exploration by its members, John Livermore, Pete Galli, and Andy Wallace. This important exploration group continues to be a driving force in finding and developing mines in the Great Basin. I look forward to hearing Andy's talk and anticipate another large turnout in November.

**VISIT THE GSN WEBSITE AT:
www.gsnv.org**

GSN FOUNDATION NEWS

Roger C. Steininger, *Executive Director, GSN Foundation*

I would like to personally thank all of the members who have contributed to the Foundation as part of renewing your membership. If you still haven't renewed your membership please include a contribution to the Foundation when you send in your dues.

I hate to think it, but Christmas is just around the corner. One of the Foundation's annual fund raisers is the auction that is part of the Christmas meeting social hour. This has always been a successful event and we need your help to continue that theme. We are looking for contributions that make good auction items. If you have any gold bars, rare books, historic pictures, gift certificates, mineral specimens, etc around the house or office the auction is a good place to clear out that clutter. You can either get them to D.D. LaPointe or Rachel Dolbier.

The Elko Chapter created a scholarship at UNR for a student from the Elko area. This is the first year of what hopefully will be an ongoing scholarship. Good job Elko Chapter.

Thanks again for all of your support.

GSN Holiday Party

ROCK RAFFLE ITEMS NEEDED!!

December 19, 2007

D.D. LaPointe

GSN Foundation Trustee and Education Co-Chair

Rachel Dolbier

GSN Education Co-Chair

It's time to think about donating items for the Geological Society of Nevada Foundation's fundraiser "Rock Raffle and Silent Auction" to be held at our annual Christmas meeting on December 19th. We are seeking donation of any items suitable for raffle – gift baskets, attractive rock or mineral samples, gems or gemstones, jewelry, wine or other spirits, logo items, geological equipment or publications, commemorative coins, GOLD, or any geology or mining-related items will be gratefully accepted.

Raffle proceeds support GSN's educational projects, which include grants to Nevada K-12 classes for transportation on earth science related field trips, scholarships to UNR and UNLV geology students, grants to the UNR DeLaMare Library, and grants for geologic mapping in Nevada.

Donors will have their names displayed on signs at the event as well as having their names listed in the January newsletter. The GSN Foundation is a 501(c)(3) public charity, tax ID # 88-0447867. Please send donated items to D.D. LaPointe at the following address to arrive before the December meeting date, or call to arrange pick-up of donated items if you are in the Reno-Sparks-Carson City area.

Thank you for your support!

D.D. LaPointe

NV Bureau of Mines and Geology/MS178

University of Nevada, Reno

Reno, NV, 89557-0088

Phone: (775)784-6691, ext.134, FAX: (775)784-1709

e-mail: dlapoint@unr.edu

Rachel Dolbier, Administrator

W.M. Keck Earth Science and Mineral Engineering Museum

MS 168/University of Nevada, Reno

Reno, NV 89557

(775)784-4528 phone (775) 784-1766 fax

<http://mines.unr.edu/museum>

***Thanks to VICTORIA RESOURCE CORP. for
hosting the October meeting.***

GSN November 16, 2007 Membership Meeting

Date: Friday, November 16, 2007

Time: Social-6:00, Dinner-7:00 (\$17), Meeting-8:00

Reservations: 775/323-3500; fax 323-3599,
e-mail gsn@gsnv.org

Deadline: Reserve by 1 pm Thursday, November 15th

Location: Elks Lodge, 597 Kumle Lane, Reno, NV

Directions: Across (W) from the Reno-Sparks Convention Center (S Virginia St), behind the Les Schwab Tire Center

Speaker/topic: Andy Wallace, Cordex history.
See abstract below.

FORTY YEARS (NEARLY) OF GOLD EXPLORATION IN NEVADA

Cordex was founded in 1969 by John Livermore and Pete Galli to represent a syndicate of Canadian juniors for gold exploration in Nevada. Cordex has always been a low-budget effort, but has been successful through the years in finding and developing four Nevada gold mines, and discovering other sizable deposits which have been developed by others, or that remain uneconomic at current gold prices.

The most remarkable achievement of Cordex has been to remain funded through the years, allowing the long term and continuous exploration effort that has been denied most others. Cordex discoveries that were placed in production include Pinson/Preble, Dee, Marigold, and Daisy (Secret Pass). All but Secret Pass are now known as multi-million ounce deposits (past production plus reserves), but all were placed in production with initial reserves of around 500,000 ounces Au, or less. Cordex staff continued to supervise exploration at the deposits after production started and significant new additions to reserves were made at Pinson (MAG and Clay Pit), Marigold (Stonehouse and Lone Tree, eventually operated by Santa Fe and Newmont), and the new South Arturo discovery has been made by Barrick at Dee. Significant Cordex discoveries also include Stirling (now operated by Imperial), Florida Canyon (first operated by Pegasus), and the uneconomic Hasbrouck Mountain gold deposit and Bretz uranium deposits. Total spending by Cordex in its history is US \$38,450,000.

We are also proud that Cordex, and its funding partners, have made other types of contributions using proceeds of the Nevada operations, including major funding of the Delamare library and Canada Hall at UNR, and the acquisition of land now preserved in the Lamoille Canyon area south of Elko. Cordex has always been environmentally conscious with its mines pioneering concurrent reclamation. We are most proud of participating with Eklund Drilling to develop capable over-land drills, saving hundreds of miles of road building in Nevada alone. These achievements led to the Dupont Environmental Leadership Award to Cordex's main partner in 1993, Rayrock Mines Inc. Cordex has been a financial supporter of geological research at UNR and other universities, and the USGS, both in direct financing of projects through the years, and recently through participation in the founding and financial support of the highly successful CREG program.

Cordex remains very active, and is now fully funded, for the first time since the downturn of the late 1990's, by Columbus Gold Inc. We have made some changes in our approach due to requirements of our funding partners. We now have 31 active projects in Nevada, Arizona, and Utah, of which fifteen are farmed out. We are also currently drilling at our wholly-owned projects. We will be participating, late in 2007, in the management of a new company oriented toward exploration for silver.

This talk is a collection of some history, mixed with personal reminiscences of the author, who started part-time work for Cordex as a graduate student at Mackay in 1973. In hindsight, the timing of the formation of Cordex could not have been better, as it was able to participate in what will eventually be known as the greatest gold rush in the history of the world.

Members are encouraged to keep us informed about their own career related moves and awards, and deaths of GSN colleagues. Your information needs to be received by Rhonda at gsn@gsnv.org by the 20th of each month.

ACTIVITY UPDATE

Mike Brady, September 2007
www.activityupdate.com

NEVADA

Idaho General Mines Inc. announced that based on a recently completed feasibility study of the Mt. Hope Project, reserves aggregate 1,062,500,000 tons @ 0.068% Mo proven+probable. Capital costs for mine development are also estimated at \$852,000,000 to produce 19,100 tons/year Mo. (was 330,000,000 tons @ 0.098% Mo proven+probable)
M.J.: August 31

Au Ex Ventures Inc. announced that recent drill results at the Swiss Bank Project include 455-460 feet @ 0.012 opt Au (SB-006); 440-455 feet @ 0.015 opt Au (SB-015) and 750-755 feet @ 0.015 opt Au (SB-015).
Press Release: September 21

Consolidated Gold Win Ventures Inc. announced it acquired an option to earn a 10% interest in the Victoria Mine Property from Kokanee Placer Ltd. for \$1,000,000 cash, 2,500,000 shares and \$1,500,000 in exploration expenditures. (resource = 1,000,000 tons @ 2.4% Cu inferred)
Press Release: September 17

Klondex Mines Ltd. announced recent drill results at the Fire Creek Project include 920-940 feet @ 0.228 opt Au (FC0727); 1,255-1,260 feet @ 1.245 opt Au (FC0707); 230-240 feet @ 0.381 opt Au (FC0705); 935-951 feet @ 0.325 opt Au (FC0704) and 998-1,005 feet @ 0.308 opt Au (FC0703). (resource = 1,760,000 tons @ 0.582 opt Au indicated)
Press Release: September 14

Midway Gold Corp. announced recent studies of the Afgan Project revealed a resource of 1,851,000 tons @ 0.027 opt Au indicated and 1,286,000 tons @ 0.026 opt Au inferred. (no previous data)
Press Release: September 10

Midway Gold Corp. announced recent drill results at the Spring Valley/Porphyry Project include 555-585 feet @ 0.020 opt Au (SV07-267); 195-285 feet @ 0.030 opt Au (SV07-268); 485-610 feet @ 0.041 opt Au (SV07-279); 755-910 feet @ 0.034 opt Au (SV07-310) and 360-535 feet @ 0.044 opt Au (SV07-311). (resource = 10,030,000 tons @ 0.024 opt Au measured+indicated)
Press Release: September 12

Midway Gold Corp. announced recent drill results at the Pan Project include 0-85 feet @ 0.036 opt Au (PN07-50) and 375-395 feet @ 0.027 opt Au (PN07-34). (resource = 17,900,000 tons @ 0.019 opt Au indicated)
Press Release: September 18

Senator Minerals Inc. announced recent drill results at the Ivanhoe Creek Project include 214-217 feet @ 0.005 opt Au (IC07-02) and 416-423 feet @ 0.001 opt Au (IC07-13).
Press Release: September 19

X-Cal Resources Ltd. announced recent drill results at the Sleeper/West Wood Project include 540-573 feet @

0.107 opt Au (XW07-60); 660-675 feet @ 0.190 opt Au (XW07-65); 875-910 feet @ 0.133 opt Au (XW07-71); 560-590 feet @ 0.121 opt Au (XW07-73) and 792-803 feet @ 0.175 opt Au (XW07-52). (resource = 150,000 tons @ 0.363 opt Au inferred)
Press Release: September 17

Yamana Gold Inc. announced it increased the cash portion of its offer to acquire Meridian Gold Inc. to \$6.99/share (was \$6.49/share) while the share component of the offer remains unchanged at 2.235 shares Yamana/1.0 share Meridian. The total value of the merger offer is now \$3,600,000,000.
Press Release: September 24

Meridian Gold Inc. announced that it recommend to its shareholders that they accept the recent takeover offer from Yamana Gold Inc.
Press Release: September 24

TAX DEDUCTION

It is the time for gift giving and cleaning your house. GSN and the Tucson Gem and Mineral Society have given over 15,000 books to universities in Mexico and are looking for people who want a tax deduction and a chance to clean out their offices or homes. Any and all items are welcome and will be greatly appreciated. Contact Clancy if you have anything to donate. 852-2513.

UPCOMING EVENTS

November 16th, Friday – GSN MEMBERSHIP MEETING: Reno Elks Lodge 597 Kumble Ln, Reno, NV. Drinks at 6 pm, dinner at 7 pm, talk at 8 pm featuring Andy Wallace. Sponsored by Harvest Gold. Contact Rhonda Bayley for reservations, 775/323-3500, gsn@gsnv.org.

December 3-7 – 113 NWMA Annual Meeting and Expo, Spokane WA. A brochure about this must-attend, year-end mining event is downloadable at www.nwma.org/pdf/.pdf.

December 8th – Southern Nevada Chapter has scheduled a joint Christmas Event with the Nevada Friends of Paleontology (FOP) for Saturday evening, December 8th. The location has still not been finalized. The event will include a brief talk by the FOP on recent excavations at the Gilcrease Springs megafauna fossil site, a Silent Auction of "Things Geologic", and holiday refreshment.

December 11th – AIPG 18th Annual Exploration Round-up, 10 speakers from industry; 6:00 pm at the Holiday Inn, 6th Street, Reno, NV. Cocktails and students sponsored by Eklund Drilling, dinner at 7:00, program at 8:00. Contact Kel Buchanan for reservations, 775/786-4515, summitcrk@aol.com.

SME Northern Nevada

November 9 – Monthly Meeting - Gold-n-Silver Inn, 4th and Vine Streets, noon, \$17 members, \$19 nonmembers. Email Jaak Daemen at daemen@mines.unr.edu for reservations.

December 1 – Christmas Party - Harrah's Prospector's Room in Reno, 6 pm to midnight, \$48 per person, email Kathy Altman at kaltman@mines.unr.edu for reservations.

WINNEMUCCA CHAPTER NOVEMBER 14th MEETING

BRECCIAS: DESCRIPTION AND ANALYSIS OF DATA-RICH ROCKS

Meghan Jackson, Cortez Mine
See abstract under Elko Chapter

ELKO CHAPTER NOVEMBER 15th MEETING

BRECCIAS: DESCRIPTION AND ANALYSIS OF DATA-RICH ROCKS

Meghan Jackson, Cortez Mine

Breccias are significant features of 50-60% of porphyry and epithermal ore deposits (Sillitoe, 1985). They are important ore hosts in volcanogenic massive sulfide deposits, sedimentary-exhalative deposits, and Mississippi Valley-type deposits. Breccias in all geologic environments can provide pre-existing traps for mineralizing fluids, can directly reflect mineralizing processes, and can modify or even destroy mineralization post-deposition. The nearly ubiquitous relationship between breccias and ore has been recognized since the 1880's, and yet there is no consistent descriptive or genetic classification for breccias and other clastic rocks used in economic geology. Descriptive schemes derived from other sub-disciplines of geology (sedimentology, volcanology) do not always address the characteristics of most interest to the economic geologist, and terms in common usage by economic geologists do not always reflect their usage in other sub-disciplines.

Too often, the important step of describing breccias observed in conjunction with economic mineralization is skipped in favor of genetic terminology ("collapse breccia", "solution breccia", "hydrothermal breccia", "intrusive breccia"). Rigorous breccia description, based on the geometry of the breccia body, its internal organization, the components which compose the breccia (clasts, chemical and clastic infill, and open space), the grain size and alteration of the body, can refine the understanding of the relationship between mineralization and brecciation (Davies and Cooke, in press). This talk will address physical and mathematical breccia description, and present several case studies in which breccia description lent insight into breccia formation processes.

A breccia body is not the product of single "brecciation" process, but of a series of sequential processes, including fragmentation, dilation, transport, comminution, settling, and cementation. The processes may reflect to a mixed genesis; for example, a hydrothermally cemented water-lain volcanoclastic breccia is the product of phreatic or phreato-magmatic fragmentation, aerial and alluvial transport, alluvial settling and hydrothermal cementation. Without detailed breccia description, assignment of a single genetic term for this breccia could be misleading, with serious consequences for understanding the geology and the potentially ore-forming system.

*Thank you to our
generous donors*

GSN Foundation

GOLD LEVEL DONORS \$500+

Edward R Chipp

SILVER LEVEL DONORS \$100-\$499

Ann Carpenter
Don Jennings
Thomas John
Dave Mough
Sandra Powers
William H Wulfstange
Elizabeth Zbinden

BRONZE LEVEL DONORS \$1-\$99

Joseph Anzman
Fred Barnard
Ed Bartels
Steve Carroll
W. T. Cohan
Kim S. Craig
Elliott M Crist
Rachel Dolbier
Cyrus W. Field
Larry Martin
Bob McCuskor
J.P. Robinson
Shea Clark Smith
Craid A. Stiles
Alan R. Wallace
Steven I. Weiss

Student Dinner Fund

Opal Adams
Mark J. Abrams
Fred Barnard
Ed Bartels
Keith Cambell
Ann Carpenter
W. T. Cohan
Fleetwood R. Koutz
Steve Lappin
Larry Martin
Bob McCuskor
Pat Mohn
Joseph Strapko
Tommy Thompson
Alan R. Wallace
Steven I. Weiss
Elizabeth Zbinben

HOWARD J. ADAMS
President

HARD ROCK WHEELS, INC.

4WD Pickup Rentals

14756 Pine Knolls Ln
Reno, Nevada 89521
(775) 852-2622
Fax (775) 852-2075

MIKE TOLBERT
2700 S. Cushman St.
Fairbanks, AK 99701
(907) 452-6631



**ENVIRONMENTAL SERVICES
FOR THE MINING INDUSTRY**

environmental consultants, inc.

- Baseline Studies
- Environmental Permitting
- Monitoring & Compliance
- Reclamation & Closure Plans
- Investigation & Remediation

**Elko Location
775-738-8766**

www.jbrenv.com

Reno and Salt Lake City locations

**2007-2008 MEMBERSHIP DIRECTORY
ADVERTISEMENTS FOR THE GOLD PAGES**

It is time to get your advertisements in for the 2007/2008 Membership Directory. Don't miss this opportunity to reach your clients. The Directory was distributed to approximately 900 members last year and we are projecting over 1,000 members. The Directory will be published in January 2008. Prices are as follows:

2" x 3 1/2"	Business Card – Horizontal	\$ 50
3 1/2" x 5"	Quarter Page – Vertical	150
5" x 7"	Half Page – Horizontal	300
3 1/2" x 10"	Half Page – Vertical	300
7" x 10"	Full Page – Vertical (Gold Pages)	450
7" x 10"	Opposite, Inside Back Cover – Vertical	600
7" x 10"	Qualified Persons Page	600
7" x 10"	Inside Back Cover – Vertical	700
7" x 10"	Inside Front Cover – Vertical	800
7" x 10"	Outside Back Cover – Vertical	1,000

As in the past, the first complete payment received in the GSN office for a requested location will be assigned that location. Please contact Rhonda Bayley at the GSN Office, 775/323-3500, or Opal Adams, GSN Membership Chairman, at 775/826-8822 for more information or to obtain a form.



Fire Assay
ICP - OES
ICP - MS
AAS
Custom Preparation
Bullion Analyses
BLEG

Corporate Office
1500 Glendale Avenue
Sparks, NV U.S.A. 89431-5902
Telephone (775) 356-0606
Fax (775) 356-1413

Chris Ioannakis, Managing Director,
Analytical Services

Elko Office
2320 Last Chance Road
Elko, NV U.S.A. 89801-4852
Telephone/Fax (775) 738-9100

E-mail: AALADMIN@aallabs.net
Website: www.aallabs.com



**American
Assay &
Environmental
Laboratories**



**Carlin Trend Mining
Supplies & Service**

www.carlintrend.com

369 5th St., Elko, NV 89801
(775) 778-0668, Fax: (775) 778-0687, carlintrend@frontiernet.net

Geological Consulting - Claim Staking - Soil Sampling
Geology & Drafting Supplies - AutoCad & GIS
Temporary Employees In All Fields

SERVICIOS HIDROGIS
GEOGRAPHIC INFORMATION SYSTEMS

Dirk Masuch Oesterreich (Geologist, Proprietor)
A.P. 107; Carretera a Galeana, km. 4
Linares, Nuevo León, México, C.P. 67700
Tel.: +52 821 212 5908, +52 821 212 8311
www.servicioshidrogis.com



Please ask for our maps and GIS database of stock
exchange listed mining companies in Nevada
info@servicioshidrogis.com

MINERAL EXPLORATION SERVICES

**SOIL SAMPLING
CLAIMSTAKING
PROPERTY EVALUATION
MINE HAZARD FENCING**

5655 Riggins Ct., #15, Reno, NV 89502
Tel: (775) 954-1082 Fax: (775) 829-6882
email: day@mineralexploration.com

ALS Chemex



We are a global analytical testing company
serving the mining and mineral exploration
industry in Nevada and around the world.

We specialise in:

- Assaying and geochemical analysis for mining and mineral exploration projects
- On-site contract mine laboratory management
- Environmental monitoring of mining operations
- Acid mine drainage studies

Contact our laboratories in Nevada to find out how we can
help you with all of your project's analytical needs.

RENO, NV
Phone: 775 356 5395

ELKO, NV
Phone: 775 738 2054

WINNEMUCCA, NV
Phone: 775 625 4192

www.alschemex.com

*Right solutions....
....Right partner*

sample Bags

HUGE INVENTORY  LOW, LOW PRICES

NEW ADDRESS!
LEGEND, INC.

988 Packer Way
Sparks, NV 89431

Off Glendale east of McCarran
phone: (775) 786-3003
fax: 786-3613
www.Lmine.com
email: info@Lmine.com



Enviroscientists, Inc.

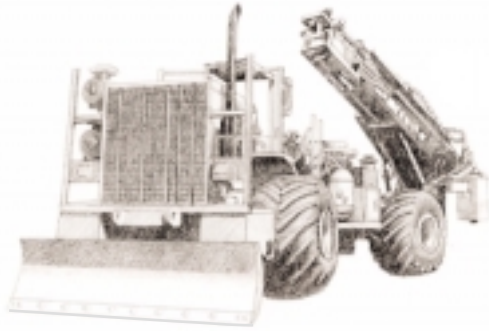
4600 Kietzke Lane, Suite C 129, Reno, Nevada 89502
Phone: (775) 826-8822 Fax: (775) 826-8857

**Notices, Plans of Operations,
Cost Estimates, TRI, Biological Surveys,
Air Quality Permits & Audits**

Info@enviroincus.com www.enviroincus.com



DIVERSIFIED DRILLING, LLC

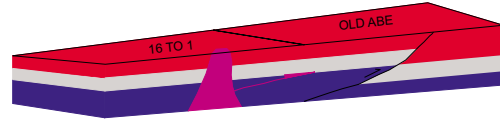


Providing Drilling Services To The Mining/Metals Industry Since 1980

3650 Grant Creek Road
Missoula, Montana 59808
Phone: (406) 542-1010 Fax: (406) 542-5065
www.diversifieddrilling.com

GIS Land Services

Greg Ekins M.S. R.L.P. #32306 President
Mineral Landman - GIS Cartographer



Surface Title
Mineral Title

"From Courthouse Records to Final Map"

- Land Status Maps
- AutoCad Map
- Geologic
- Arc Map
- Geo Chem
- Mapinfo
- Discover
- Power Point



5365 Mae Anne Ave B-14A
Reno, NV 89523
P:775-746-8803
P:775-746-2110
F:775-746-8802
E:greg@gislandservices.com

www.gislandservices.com



**WESTERN RECON
and
Mineral Exploration Inc.**

**Claim Staking / Soil Sampling / Grids
Experienced / Dependable/ Trimble GPS**
Gary Castagne 775-250-4879
John Fernandez 775-815-2587

www.westernrecon.com

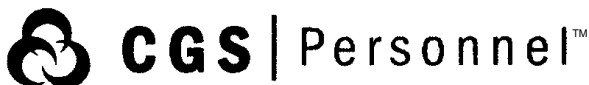
*Jo Beth Allen
Professional Graphics*

*CAD Drafting/Digitizing/Scanning
High Resolution Presentation Graphics
Plotting/Printing
Geologist*

1055 Joshua Drive
Reno, Nevada 89509

Phone: 775-324-7960
Fax: 775-324-7583

jobeth@yellowsb.net



DIXIE BULLOCK
DISTRICT MANAGER

WILMA HATTER
SERVICE REPRESENTATIVE
HATTERW@SOSSTAFFING.COM

390 East Moana Ln., Ste. 2
RENO, NV 89502
T. 775.331.5227 F. 775.323.7772
WWW.SOSSTAFFING.COM

A Division of SOS Staffing Services, Inc.

Big Sky Geophysics

Clark Jorgensen, M.Sc.
Geophysicist

*Field Work
Processing
Interpretations*

P.O. Box 353
Bozeman, MT 59771
USA

Phone: (406) 587-6330
Fax: (406) 587-6394
Mobile: (406) 580-9718
clark@bigskygeo.com

**For more details, my background, and case studies,
visit my webpage at www.bigskygeo.com**



GEOLOGICAL SOCIETY OF NEVADA

7/07

P.O. Box 13375, Reno, NV 89507 USA

Phone (775) 323-3500 • Fax (775) 323-3599 • gsn@gsnv.org • www.gsnv.org

Offices are located on the University of Nevada, Reno Campus, Laxalt Mineral Research Center, Room 266
Office hours: 9-4 pm, Monday through Friday

The Geological Society of Nevada (GSN) is a non-profit, educational organization whose principal objective is to promote the advancement of geological sciences, especially as they relate to Nevada. GSN supports the dissemination of information through meetings, field trips, publications and academic endeavors. Membership is open to geologists, geophysicists, geochemists, engineers, educators, students, prospectors or anyone else with an interest in the geological sciences and/or the goals of the GSN.

The GSN membership year begins in June. Annual dues of \$35.00 are due in the fall. The GSN sponsors a Field Trip in the Fall and one in the Spring of each year. Monthly meetings are held on the third Friday of each month, September through May. The following are sanctioned Chapters of the GSN: Elko Chapter, based in Elko; Southern Nevada Chapter, based in Las Vegas, and the Winnemucca Chapter, based in Winnemucca.

Please remember the GSN Foundation when renewing. Foundation dollars are used for the Kindergarten through 12th grade Field Trip Grant Program, Nevada Mapping Grants and University of Nevada scholarships.

MEMBERSHIP APPLICATION/RENEWAL		DATE _____
NAME: _____		POSITION/TITLE _____
CONSULTANT <input type="checkbox"/> COMPANY NAME: _____		
STUDENT <input type="checkbox"/> UNIVERSITY: _____		
ADDRESS: _____		
CITY: _____		STATE/PROVINCE: _____
ZIP: _____ - _____		COUNTRY: _____
PHONE: WORK _____		FAX _____
CELL _____		RESIDENCE _____
E-MAIL: _____		WEB SITE: _____
<input type="checkbox"/> I WOULD LIKE TO HAVE AN ASTERISK BY MY NAME IN THE DIRECTORY INDICATING I AM AVAILABLE FOR CONSULTING. <input type="checkbox"/> I HAVE MET THE LICENSING REQUIREMENTS AND WANT "QP" (QUALIFIED PERSON) BY MY NAME IN THE DIRECTORY.		
I authorize GSN to send to me, via email: GSN announcements, publication updates, employment opportunities, etc.		Yes <input type="checkbox"/> No <input type="checkbox"/>
<input type="checkbox"/> Regular Membership Dues - email newsletter \$35.00	<input type="checkbox"/> Honorary	\$ _____
<input type="checkbox"/> Regular Membership Dues - hardcopy newsletter via postal service \$40.00	<input type="checkbox"/> Honorary	_____
<input type="checkbox"/> International Membership Dues - email newsletter only \$35.00		_____
<input type="checkbox"/> International Membership Dues - hardcopy newsletter via postal service \$50.00		_____
<input type="checkbox"/> Student Membership Dues (sponsored by GEOTEMPS) - email newsletter only		_____
Optional Chapter Affiliation (to be eligible for chapter voting, choose one)		
<input type="checkbox"/> Elko Chapter		
<input type="checkbox"/> Southern Nevada Chapter		
<input type="checkbox"/> Winnemucca Chapter		
Student Dinner Fund		
<input type="checkbox"/> I wish to donate to the GSN Student Dinner Fund _____		
GSN Foundation		
<input type="checkbox"/> I wish to donate to the GSN Foundation _____		
(Donated funds will be used for unrestricted grants and scholarships unless otherwise specified _____.)		
TOTAL DUE		\$ _____
Payment: <input type="checkbox"/> Check # _____ <input type="checkbox"/> Cash <input type="checkbox"/> Visa <input type="checkbox"/> MC Card # _____		
Exp. Date _____ Signature (as it appears on card) _____		
Return with payment to: Geological Society of Nevada, P.O. Box 13375, Reno, NV 89507 Fax to 775/323-3599, email gsn@gsnv.org		

GEOLOGICAL SOCIETY OF NEVADA



gsn@gsnv.org • www.gsnv.org
Telephone (775) 323-3500 FAX (775) 323-3599
Post Office Box 13375
Reno NV 89507
USA

NON PROFIT
ORGANIZATION
U.S. POSTAGE
PAID
RENO, NV
PERMIT NO. 931

It Is A Tough Job
But Somebody Has To
Permit It

©Enviroscientists

Specializing in Exploration & Mining Projects on U.S.F.S., B.L.M., & Private Lands

Plans of Operations • Notices • Baseline Studies (Biology & Cultural)
Environmental Assessments • Environmental Impact Statements
Permit Mediation & Negotiation



Enviroscientists, Inc.

Environment  Resources  Management
Striking the Balance

4600 Kietzke Lane, Suite C129
Reno, Nevada 89502

Phone: (775) 826-8822 Fax: (775) 826-8857

2363 North 5th Street, Suite 100
Elko, Nevada 89801

Phone: (775) 753-9496 Fax: (775) 753-9499

www.enviroincus.com