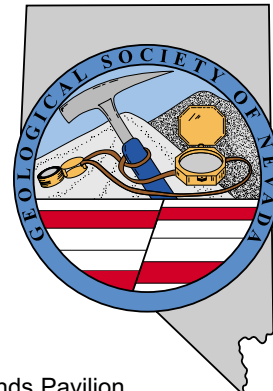


# GSN NEWSLETTER



October 2006, Vol. 21, No. 8

Published monthly except June and July

## PRESIDENT

**Ellie Davie Leavitt**  
Western Energy Development Corp.  
zoracdavie@aol.com

## VICE PRESIDENT

**Gregory Hill**  
Harvest Gold Corp. (US)  
hillgreg@charter.net

## SECRETARY

**Leslie Olmstead**  
Agnico-Eagle (USA) Limited  
lholmstead@agnico-eagle.com

## TREASURER

**Camille Prens**  
Mine Development Associates  
cami@mda.com

## MEMBERSHIP CO-CHAIRS

**Greg McN. French**  
Consulting Geologist  
GMcNFrench@aol.com

## Opal Adams

Enviroscientists, Inc.  
ofadams@enviroincus.com

## PUBLICATION CO-CHAIRS

**Marilyn Miller**  
Consulting Geologist  
marilyn.miller1@sbcglobal.net

## Debbie Schneider

Schneider and Schneider Assoc  
dschneider41@charter.net

## OFFICE MANAGER

**Laura Ruud**  
gsn@mines.unr.edu

## CALENDAR OF GSN EVENTS

- Oct. 1 Sunday** GSN 18<sup>th</sup> ANNUAL PICNIC. Rancho San Rafael Park, Highlands Pavilion, noon to 4 pm. Mark your calendars! Contact Laura to sign up. GSN will provide meat, drinks and games. Bring a side dish, salad or dessert to share, and your family or friends.
- Oct. 11 Wednesday** WINNEMUCCA CHAPTER MEETING. Speaker: Eric Struhsacker, AuEx Ventures Inc. Title: "Carlin-Style Gold Prospects of the Pequoop Project, Elko County, Nevada". The Martin Hotel, W Railroad and Melarkey Streets. Drinks at 6:30 pm, presentation at 7:00 pm. Sponsored by American Assay Laboratories. Contact Ivan Johnston, Chapter President, for more info, 775/635-4292, Ivan.Johnston@Newmont.com
- Oct. 19 Thursday** ELKO CHAPTER MEETING. Paul Klipfel, Mineral Resource Services Inc. Title: "Passive Margin Settings and Giant Gold Deposits – A Curious Relationship for Sediment Hosted Vein and Sediment Hosted Disseminated Deposits". Western Folklife Center, 501 Railroad Street, Elko. Drinks at 6:00 pm with the talk at 7:00 pm. Contact Richard Reid, Chapter President, at 775/778-3912, Richard.Reid@newmont.com for more information.
- Oct. 20 Friday** GSN MEMBERSHIP MEETING. Speaker: David Emmons, Kinross Gold Company. Title: "Geology of the Round Mountain Gold Deposit, Nye County, Nevada". Reno Elks Lodge, 597 Kumle Ln, Reno, NV. Drinks at 6 pm, dinner at 7 pm, talk at 8 pm. Contact Laura Ruud for reservations, 775/323-3500 or gsn@mines.unr.edu.
- Oct. 26 Thursday** SO. NEVADA CHAPTER MEETING. Speaker: Dave Buesch of the USGS will be speaking on structural geology in the Yucca Mountain area. UNLV Lily Fong Geoscience Building, Room 105, Refreshments at 6 pm, talk at approx. 6:30 pm. Contact Bruce Hurley, Chapter President at 702/295-1284, rocks2bwh@aol.com.
- Oct. 27-29 Fri-Sun** GSN FALL FIELD TRIP. Sites to be visited include Bald Mountain, Archimedes and Stacatto Resources South Eureka Project. See registration form on page 2 of this newsletter. Seats still available - REGISTRATION DUE BY OCTOBER 13<sup>th</sup>!

Geological Society of Nevada, PO Box 13375, Reno, NV 89507 USA, 775/323-3500, [www.gsnv.org](http://www.gsnv.org)  
Office location: Laxalt Mineral Research Center, Rm 266, UNR. Hours: Mon thru Fri, 1-4 pm

## FROM THE PRESIDENT

Ellie Davie Leavitt, *GSN President 2006-2007*

Our first monthly membership meeting had a great turnout! Michel Cuney presented an excellent overview of uranium districts throughout the world; he summarized the districts and major deposit types, concluding with several slides of supply and demand. It was a highly informative talk, and an honor to begin our meetings with a world-class expert on uranium. Many thanks are due to both Michel Cuney, and Steve Castor, who recruited him for this affair. Also, thanks to the many members who have been supporting GSN's efforts to include students at our dinner; we had 16 students join us at this meeting. They all had free meals due to the generosity of our GSN members who have donated to the Student Dinner Fund. Let's keep them coming! Once again we should all thank **Eklund Drilling** for sponsoring the bar.

October kicks off with the GSN family picnic on Sunday, October 1, followed by the launch of the new and improved GSN website. Members are encouraged to

*continued on page 4*

## OCTOBER MEETING SPONSOR

Fire Assay  
ICP - OES  
ICP - MS  
AAS  
Custom Preparation  
Bullion Analyses  
BLEG

**Corporate Office**  
1500 Glendale Avenue  
Sparks, NV U.S.A. 89431-5902  
Telephone (775) 356-0606  
Fax (775) 356-1413

Chris Ioannakis, Managing Director,  
Analytical Services



**American  
Assay &  
Environmental  
Laboratories**

**Elko Office**  
2320 Last Chance Road  
Elko, NV U.S.A. 89801-4852  
Telephone/Fax (775) 738-9100

E-mail: [AALADMIN@aallabs.net](mailto:AALADMIN@aallabs.net)  
Website: [www.aallabs.com](http://www.aallabs.com)



# News and Announcements

## GSN FALL 2006 FIELD TRIP

### “Geology and Mineralization at Bald Mountain, East Archimedes, and South Eureka”

The GSN 2006 Fall Field Trip will visit the Bald Mountain mine, the South Eureka project, and the Ruby Hill mine in east-central Nevada. At Bald Mountain, we will see several ore deposits and learn about ongoing exploration in this growing district. At South Eureka, a new perspective on mineralization will be presented. New modeling and geological reinterpretation has recently led to the successful targeting and drilling of significant mineralized intervals at this deposit. The Ruby Hill visit will focus on the geology of the East Archimedes deposit which is currently being exposed through stripping of overburden. This visit will provide a view of this interesting deposit prior to the completion of overburden removal and the commencement of gold production.

#### Friday, October 27, 2006

- 12:30 PM Meet at the UNR parking lot
- 1:00 PM Bus leaves promptly at 1:00 PM
- 6:00 PM Arrive in Eureka, Eureka Inn
- 6:30 PM Cocktails
- 7:00 PM Dinner

Overnight Lodging – Eureka Inn

#### Saturday, October 28, 2006

- Breakfast on your own
- 8:00 AM Bus leaves Eureka for Bald Mountain
- 9:00 AM Bald Mountain tour
- 12:30 PM Lunch provided
- 1:00 PM Bus leaves Bald Mountain for South Eureka project
- 2:00 PM South Eureka project tour
- 5:30 PM Bus leaves South Eureka for Eureka
- 6:00 PM Return to Eureka
- 6:30 PM Cocktails
- 7:00 PM Dinner
- 8:00 PM Talk – to be announced

Overnight Lodging – Eureka Inn

#### Sunday, October 29, 2006

- Breakfast on your own
- 8:00 AM Bus leaves Eureka for Ruby Hill mine
- 8:15 AM East Archimedes tour
- 11:00 AM Bus leaves for Reno
- 12:30 PM Lunch – en route
- 4:00 PM Arrive at UNR parking lot

Price includes transportation, overnight lodging, snacks and drinks, lunches, dinners, and guidebook.

Reservations are on a **first-come, first-served basis**; attendance is limited to **45 participants, we are out of Single Rooms so please register for a double.**

**Payment must be received in GSN office by October 13, 2006 to guarantee reservation.**

**Please complete and submit ASAP:**

### Fall 2006 Field Trip Sign Up

Name \_\_\_\_\_

Daytime Phone \_\_\_\_\_

Fax \_\_\_\_\_

Company \_\_\_\_\_

Address \_\_\_\_\_

Email \_\_\_\_\_

Person to contact in case of emergency:

Name \_\_\_\_\_ Phone \_\_\_\_\_

Lodging needed in Eureka: Y\_\_ N\_\_  
Single\_\_ Double \_\_

Roommate (or we will assign) \_\_\_\_\_

MEMBER COST:	double room	\$265.00
	single room (Limited Number)	None left
	w/o Eureka lodging	\$180.00

*NON-MEMBER COST:	double room	\$300.00
	single room	None left
	w/o Eureka lodging	\$215.00

\*Non-members are encouraged to become members of the GSN for \$35 annual dues in order to take advantage of the reduced rates.

Amount included with this form \$ \_\_\_\_\_

Paid with Check # \_\_\_\_\_

Visa\_\_ MC\_\_ Exp Date \_\_\_\_\_

Credit Card # \_\_\_\_\_

Signature \_\_\_\_\_

(as it appears on card)

**Payment must be made by October 13, 2006  
No refunds after October 13, 2006**

Fax: 775/323-3599 or mail to GSN office:  
P.O. Box 13375, Reno, NV 89507, or email to: gsn@mines.unr.edu

**Thanks to Eklund Drilling Company, Inc. for hosting the September meeting.**

# *GSN October 20, 2006 Membership Meeting*

---

**Date:** Friday, October 20, 2006

**Time:** Social-6:00, Dinner-7:00, Meeting-8:00

**Reservations:** 775/323-3500; fax 323-3599,  
e-mail gsn@mines.unr.edu

**Deadline:** Reserve by 11 am Thursday, October 19<sup>th</sup>

**Location:** Elks Lodge, 597 Kumle Lane, Reno, NV

**Directions:** Across (W) from the Reno-Sparks Convention Center (S Virginia St), behind the Les Schwab Tire Center

**Speaker/topic:** David Emmons, Kinross Gold Company  
See abstract below.

---

## **GEOLOGY OF THE ROUND MOUNTAIN GOLD DEPOSIT, NYE COUNTY, NEVADA**

**David L. Emmons, Kinross Gold Company**

The Round Mountain gold deposit is located approximately 55 miles north of Tonopah in Nye County, Nevada. The mine is in Big Smoky Valley on the western margin of the Toquima Range. The deposit was discovered in 1906 when coarse-gold-bearing quartz veins were found on the flanks of Round Mountain. Mining has been nearly continuous since the discovery starting with underground mining, placer mining and in the late 1970s as one of the first open pit, heap leach mines. Total gold production exceeds 10 million ounces. The mine is owned by Kinross Gold Corp. (50%) and Barrick Gold Corp. (50%) and is operated by Round Mountain Gold Corp. a wholly owned subsidiary of Kinross.

Oligocene felsic volcanic rocks (tuffs) and Paleozoic metasedimentary strata host the gold mineralization. The volcanic host rocks are dated at  $\pm 26.5$  to  $26.0$  Ma. The geologic section for the Round Mountain mine, from oldest to youngest, is Paleozoic strata, Cretaceous granite, the Round Mountain volcanic section: 1) moderately welded, bedded tuff, 2) non-welded, pumice-rich rhyolite tuff, 3) a transitional unit of moderately welded rhyolite tuff, 4) the densely welded rhyolite tuff, and 5) the overlying Stebbins Hill units, consisting of laminated tuffaceous lake beds, tuffs, vitrophyre, volcanic breccias and silicified breccias. The valley fill rocks consist of a lower placer gold bearing alluvial unit and an upper alluvial section with considerable granitic detritus. All of the rock units are known to contain ore except the granitic intrusion and the upper alluvium.

The structural setting of the Round Mountain deposit consists of the volcanic units gently dipping to the southwest unconformably deposited on "basement" rocks of metasedimentary Paleozoic rocks and the granitic pluton. The Paleozoic strata are tightly folded with numerous small-scale thrust faults. Faulting that cuts the Tertiary rocks trend N20°E, N45°E and N70°W. The N70°W trend for faults and fractures is the dominant trend for mineralization. Basin and Range faults are well exposed in the pit and have an orientation of approximately N20°E/65-75°W. These faults are well exposed in the pit and have been intersected in the current underground exploration workings. The Basin and Range faults are a fairly complex set of faults that down drop the units to the west. These faults offset the basal strata of the alluvium.

The caldera setting for the Round Mountain deposit is fairly well documented by drilling and mine geologic mapping. The deposit sits above a steeply dipping contact between the Paleozoic and granitic "basement" rocks and the overlying volcanic units. The gold deposit coincides with the edge of the volcanic depression. Core holes have penetrated more 3,000 feet of tuff within the inferred caldera. Although the known extent of the caldera is small, most of the caldera is concealed by thick, valley fill to the west in Big Smoky Valley.

Hydrothermal alteration ranges from propylitic, to argillic, to quartz-sericite, to quartz-adularia, to silicification, and coarse-gold-bearing quartz veins. Coarse gold is locally present with some "nuggets" of 1 to >100 ounces. The style and type of alteration varies with the rock type. Alteration in the densely welded rhyolite tuff is dominated by quartz-adularia veinlets with erratic gold mineralization; in the non-welded, pumice-rich rhyolite tuff mineralization is more disseminated and accompanied by widespread hydrothermal alteration. Mineralization in the Paleozoic rocks is generally restricted to fracture zones with silicification. These metasedimentary rocks are also one of the significant ore hosts. Mineralization and alteration extends into the Stebbins Hill unit as structurally controlled, silicified and argillized breccia zones. The Stebbins Hill unit probably represents the moat-fill sediments for the Round Mountain caldera.

End-of-year 2005 reserves for Round Mountain were 3.9 million ounces of contained gold. A pit expansion was initiated in November 2005. Gold production is expected to continue through 2015. Total production from the Round Mountain deposit will be approximately 13 million ounces of gold for the period 1906 to 2015. Round Mountain is one of the giant gold deposits of the world. The total metal content of the system was approximately 20 million ounces of gold.

## FROM THE PRESIDENT *continued from page 1*

peruse the website and provide feedback. Don Avery and Debbie Schneider have done an excellent job of getting this up and running. The following weekend, Earth Science Week field trips on October 7 and 8 will be led by geologists from the Nevada Bureau of Mines and Geology, and are open to the public with sign ups and more information on NBMG's website ([www.nbmng.unr.edu](http://www.nbmng.unr.edu)) (see article, this issue). All geologists are encouraged to attend and share their knowledge with the public. On October 20, the membership meeting, sponsored by **American Assay Labs**, will include a talk by Dave Emmons on Round Mountain, a world-class, volcanic-hosted gold deposit. Many of you probably have a piece of its high-grade gold. At the end of the month, October 27-29, the fall field trip will head to Bald Mountain and the Eureka area. There are still openings at press time. More details and a registration form are included in this issue.

Enrollment in Earth Sciences and mining-related fields is on the rise at UNR. Mackay students are eager to meet Geologists, Geographers, Mining and Geologic Engineers to learn about future careers. Wilson Shumway, Geology major and president of the Mackay Connections Club, has provided a brief description of this student group, and extended an invitation to GSN members to attend one of their meetings and talk about their career (see article, this issue).

The Reno area is host to a wealth of talks in Earth Sciences throughout the year. In particular, for those of you interested in Economic Geology, a committee at UNR consisting of NBMG, MSESE and USGS personnel has organized the Mackay Seminars in Economic Geology; invited speakers give talks at UNR that generally take place once or twice a month on Friday afternoons. On October 6, Al Burch of the BLM will discuss the mining claims and the validity examination process. If you're working or traveling through Winnemucca, Elko, or Las Vegas, the local GSN chapters host numerous talks throughout the year. We try to include times and locations of many of these talks in our monthly newsletter calendar, and now on our website as well. Stay posted and we'll see you at the next membership meeting, Friday, October 20<sup>th</sup>!

Visit our new website at  
[www.gsnv.org](http://www.gsnv.org)

## TAX DEDUCTION

Clancy Wendt

It is the time for gift giving and cleaning your house. GSN and the Tucson Gem and Mineral Society have given over 10,000 books to universities in Mexico and are looking for people who want a tax deduction and a chance to clean out their offices. Any and all items are welcome and will be greatly appreciated. Contact Clancy if you have anything to donate at 775/852-2513.

## ELKO CHAPTER OCTOBER 19<sup>th</sup> MEETING

Paul Klipfel

### PASSIVE MARGIN SETTINGS AND GIANT GOLD DEPOSITS – A CURIOUS RELATIONSHIP FOR SEDIMENT HOSTED VEIN AND SEDIMENT HOSTED DISSEMINATED DEPOSITS

This talk discusses and makes a case for passive margin settings, that have undergone fold-thrust deformation, as providing the requisite crustal-scale architecture for formation of giant sediment hosted gold deposits. These deposits can be of the disseminated type (SHD) as in the Great Basin or the vein type (Sediment-Hosted Vein – SHV) as is common in other parts of the world, particularly along paleo-Tethyan margins of central Asia. Considering SHD and SHV deposit types in this manner offers a unifying concept that partially explains the location and origin of these deposits.

The key features of passive margin settings that appear to control mineralization include: 1) an unstable substrate of extended continental crust; 2) a thick sedimentary sequence with associated syn- to post- depositional extension and contraction structures; and 3) reactivation and interplay between these components during fold-thrust deformation to provide pathways for deep-sourced hydrothermal fluids and magma.

The major characteristics of both Sediment Hosted Vein (SHV) and Sediment-Hosted Disseminated (SHD) deposits are nearly identical although there are a few significant differences.

Sediment-Hosted-Vein deposits (SHV) constitute a family of gold-bearing vein deposits that occur worldwide, but are found primarily in Asia. This group includes some of the world's largest gold deposits such as Muruntau, Sukhoy Log, Baleyskoe, Maysky, Kumtor among others in Asia, Bendigo and Ballarat and many other smaller gold vein deposits of the Victorian gold fields in Victoria, Australia. Other smaller deposit examples occur in Nova Scotia, Canada, Nome, Alaska and in pre-Cordillera rocks of South America.

These deposits, along with SHD deposits share common characteristics which include Late Proterozoic to early Paleozoic passive-margin sedimentary host rocks, extended crust as basement to the host rocks, multiple episodes of deformation of which fold-thrust tectonism is the most significant, Au±As, Sb, W metal suite, neutral, low to moderate salinity hydrothermal fluid chemistry, minimal to moderate grade metamorphism, active granitic/felsic magmatism in the crust at or near the time of mineralization, and occurrence within a field of numerous similar deposits, commonly in association with large placer fields.

Understanding the importance of these regional to local scale characteristics and the fact that they are common to some of the greatest gold deposits in the world provides a unique set of exploration criteria for explorationists. The application of these criteria in the search for both types of deposits may be important.

# WINNEMUCCA CHAPTER OCTOBER 11<sup>th</sup> MEETING

## CARLIN-STYLE GOLD PROSPECTS OF THE PEQUOP PROJECT, ELKO COUNTY, NEVADA

Eric Struhsacker, Richard Bedell, and  
Ron Parratt, AuEx, Inc., Reno, Nevada

The Pequop project explores a Carlin-type gold system located in the Pequop Mountains of Elko County in north-eastern Nevada. Pequop lies approximately 23 miles by road southeast of the town of Wells, Nevada and approximately 90 miles due east of the Carlin Trend.

Little evidence exists of gold exploration occurring in the Pequop Mountains prior to 1994. In that year, Pittston Nevada Gold Company, LLC (PNGC), while conducting a regional dry stream sediment sampling program, obtained Bulk Leach Extractable Gold (BLEG) values an order of magnitude greater than regional background along the western flank of the Pequop Mountains. Follow-up sampling yielded multi-ppm gold values in grab samples from a jasperoid outcrop located more than two miles upstream. Subsequent ridge and spur, rock chip, and soil grid sampling supported by geologic mapping defined several target areas on the western side of the range, now known collectively as the West Pequop area. During the period of 1994 to 2000, PNGC drilled 46 reverse circulation and core holes on three of the targets at West Pequop. Fourteen of the holes contained intersections exceeding 20 feet of 0.03 ounces per ton with the highest grade intercept being 20 feet @ 0.47 ounces per ton near the discovery outcrop. Additional district-wide sampling and mapping in 1999 and 2000 documented another target area on the eastern side of the Pequop Mountains near Long Canyon. Gold values exceeding 100 ppb from a soil grid at Long Canyon define a north-east-trending anomaly about 4400 feet long. PNGC drilled seven holes along the northeastern third of the anomaly in 2000 to test a combination of stratigraphic and structural controls. Only one of the holes intersected significant mineralization, 70 feet of 0.081 ounces per ton. Concurrent road cut sampling by PNGC yielded two well-mineralized intervals, the best being 52 feet of 10.6 ppm gold.

AuEx, Inc. acquired PNGC and its Pequop property in 2005 and completed seven RC holes in the northeastern part of the Long Canyon soil anomaly. Five of these holes yielded intercepts exceeding 40 feet of 0.1 ounces per ton and all intersected anomalous gold mineralization. The new holes combined with the drill intercept and road cut intervals obtained in 2000 appear to define a linear, northwest-dipping tabular zone. Systematic sampling of road cuts documented surface exposures of the gold-bearing zone in five additional locations along strike. The drill holes and road cuts test about 1200 feet of the 4400-foot long soil anomaly. AuEx also conducted drilling at the Acrobat and Juggler targets in the West Pequop area, confirming the presence of shallowly-dipping stratabound bound mineralization in the discovery area. Additional holes suggest continuity of mineralization between the Acrobat and Juggler areas along a strike-length of 1200 feet. Earlier drilling by PNGC indicates that a steeply-dipping or plunging zone of high grade mineralization lies beneath the stratabound zone. Defining the shape and extent of this zone will require additional work.

Gold mineralization defined to-date at the Pequop project appears to be Carlin-Type. Gold deposits occur in Upper Cambrian to Lower Ordovician age silty carbonate sedimentary rocks, in association with anomalous arsenic, antimony, and mercury. Base metal values are generally low. Marble and phyllitic siltstone units present in the sequence on the western side of the Pequops reflect the effects of regional metamorphism, whereas host rocks of the Long Canyon prospect consist of unmetamorphosed limestone and dolomite. The host rocks display partial decalcification, hematitic and jarositic limonite, and, locally, jasperoid silicification along bedding planes and in stratabound solution breccias. Jasperoid development is more extensive at West Pequop than at Long Canyon. Also, gold occurs in fault breccia zones that appear to be cut by barren faults interpreted to be associated with Basin and Range faulting.

A small collection of polished sections shows that gold occurs as micron-sized grains at both West Pequop and Long Canyon. SEM analysis has verified the presence of both gold and electrum. Gold occurs in vugs in jasperoid at both prospects. However, gold also occurs adjacent to fine fractures in calcite veinlets at Long Canyon, an occurrence not fully understood at this time. Thin sections from the West Pequop area document at least three stages of jasperoid development including a partial replacement of the host rock along relict bedding and foliation planes. A set of quartz veinlets thought to be associated with gold mineralization cuts the replacement quartz and is in-turn cut by another set of quartz veinlets that appear to be barren. A set of late calcite veins cuts the jasperoid stages.

## MERIDIAN GOLD RUN FOR EDUCATION

The Meridian Gold Run for Education will be held Sunday, October 15, 2006 at the Meridian Gold Worldwide Corporate Headquarters in South Reno, Nevada. The Run for Education will be produced by J&A Productions, a professional event management company. 100% of the funds generated through registration and through sponsorship donations will directly benefit the children in the Washoe County School District via the Education Collaborative of Washoe County. In 2005, we raised more than \$100,000 and helped to fund two brand new programs. We worked with the Education Collaborative and Washoe County School District to identify two areas that could use additional funding. These two new programs are the KIDS IN MOTION PROGRAM and the PASSPORT PROGRAM.

But the Run for Education is more than just a run, it is a kid and family focused event *where everybody wins!* "Come for the run, stay for the fun" is more than just a catchy slogan. Throughout the morning, there will be many fun activities for kids to participate in. Activities include product demonstrations, clowns, jump tents, climbing walls, fire trucks, face painting, Reno's Mobile Command Center, and much, much more! We hope to see you and your family there!

Please visit the website:

<http://www.meridianrunforeducation.com/race/index.cfm>  
for complete information.

## Big Sky Geophysics

Clark Jorgensen, M.Sc.  
Geophysicist

*Field Work  
Processing  
Interpretations*

P.O. Box 353  
Bozeman, MT 59771  
USA

Phone: (406) 587-6330  
Fax: (406) 587-6394  
Mobile: (406) 580-9718  
clark@bigskygeo.com

For more details, my background, and case studies,  
visit my webpage at [www.bigskygeo.com](http://www.bigskygeo.com)



**DIXIE BULLOCK**  
DISTRICT MANAGER

412 NORTH MCCARRAN BLVD.  
SPARKS, NV 89431

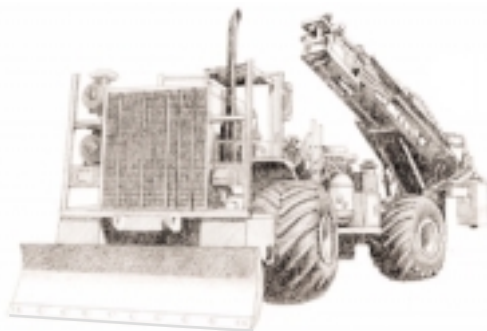
**WILMA HATTER**  
SERVICE REPRESENTATIVE  
HATTERW@SOSSTAFFING.COM

T. 775.331.5227 F. 775.323.7772  
WWW.SOSSTAFFING.COM

*A Division of SOS Staffing Services, Inc.*



## DIVERSIFIED DRILLING, LLC

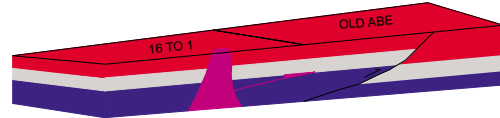


*Providing Drilling Services To The  
Mining/Metals Industry Since 1980*

3650 Grant Creek Road  
Missoula, Montana 59808  
Phone: (406) 542-1010 Fax: (406) 542-5065  
[www.diversifieddrilling.com](http://www.diversifieddrilling.com)

## GIS Land Services

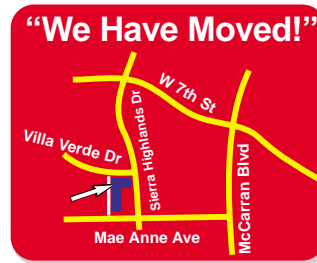
Greg Ekins M.S. R.L.P. #32306 President  
Mineral Landman - GIS Cartographer



Surface Title  
Mineral Title

"From Courthouse Records to Final Map"

- Land Status Maps
- Geologic
- Geo Chem
- AutoCad Map
- Arc Map
- Mapinfo
- Discover
- Power Point



5365 Mae Anne Ave B-14A  
Reno, NV 89523  
P:775-746-8803  
P:775-746-2110  
F:775-746-8802  
E:greg@gislandservices.com

[www.gislandservices.com](http://www.gislandservices.com)



## Carlin Trend Mining Supplies & Service

[www.carlintrend.com](http://www.carlintrend.com)

369 5th St., Elko, NV 89801  
(775) 778-0668, Fax: (775) 778-0687, [carlintrend@frontiernet.net](mailto:carlintrend@frontiernet.net)

Archaeological Surveys  
Geological Consulting - Claim Staking - Soil Sampling  
Geology & Drafting Supplies - AutoCad & GIS  
Temporary Employees In All Fields



## Enviroscientists, Inc.

4600 Kietzke Lane, Suite C 129, Reno, Nevada 89502

Phone: (775) 826-8822 Fax: (775) 826-8857

**Notices, Plans of Operations,  
Cost Estimates, TRI, Biological Surveys,  
Air Quality Permits & Audits**

[Info@enviroincus.com](mailto:Info@enviroincus.com)

[www.enviroincus.com](http://www.enviroincus.com)



**ENVIRONMENTAL SERVICES  
FOR THE MINING INDUSTRY**

- Baseline Studies
- Environmental Permitting
- Monitoring & Compliance
- Reclamation & Closure Plans
- Investigation & Remediation

**Elko Location  
775-738-8766**

www.jbrenv.com Reno and Salt Lake City locations

## MapInfo / Discover Training

For Geologists

### Tucson

**Oct 23-24** Introduction to MapInfo /  
Discover for Geologists

**Oct 25-26** Intermediate MapInfo /  
Discover for Geologists

**Oct 27** Discover 3D

**Oct 28** Discover Mobile

### Reno

**Nov 6-7** Introduction to MapInfo /  
Discover for Geologists

**Nov 8-9** Intermediate MapInfo /  
Discover for Geologists

**Nov 10** Discover 3D

**800 663-1334 • 520 744-4457 • www.tetrad.com • geografx@sprynet.com**

Sponsored by: Tetrad Computer Applications Inc. & GeoGRAFX GIS Services

## Jo Beth Allen Professional Graphics

CAD Drafting/Digitizing/Scanning  
High Resolution Presentation Graphics  
Plotting/Printing  
Geologist

1055 Joshua Drive  
Reno, Nevada 89509

Phone: 775-324-7960  
Fax: 775-324-7583

jobeth@yellowsb.net



## WESTERN RECON and Mineral Exploration Inc.

**Claim Staking / Soil Sampling / Grids  
Experienced / Dependable/ Trimble GPS**  
Gary Castagne 775-250-4879  
John Fernandez 775-815-2587

[www.westernrecon.com](http://www.westernrecon.com)

## ALS Chemex



We are a global analytical testing company  
serving the mining and mineral exploration  
industry in Nevada and around the world.

### We specialise in:

- Assaying and geochemical analysis for mining and mineral exploration projects
- On-site contract mine laboratory management
- Environmental monitoring of mining operations
- Acid mine drainage studies

Contact our laboratories in Nevada to find out how we can  
help you with all of your project's analytical needs.

### RENO, NV

Phone: 775 356 5395

### ELKO, NV

Phone: 775 738 2054

### WINNEMUCCA, NV

Phone: 775 625 4192

[www.alschemex.com](http://www.alschemex.com)

*Right solutions....  
....Right partner*

## sample Bags

HUGE INVENTORY

LOW, LOW PRICES



### NEW ADDRESS!

### LEGEND, INC.

988 Packer Way  
Sparks, NV 89431

Off Glendale east of McCarran

phone: (775) 786-3003

fax: 786-3613

www.Lmine.com

email: info@Lmine.com

## MINERAL EXPLORATION SERVICES

**SOIL SAMPLING  
CLAIMSTAKING  
PROPERTY EVALUATION  
MINE HAZARD FENCING**

5655 Riggins Ct., #15, Reno, NV 89502  
Tel: (775) 954-1082 Fax: (775) 829-6882  
email: day@mineralexploration.com

Fire Assay  
ICP - OES  
ICP - MS  
AAS  
Custom Preparation  
Bullion Analyses  
BLEG

**Corporate Office**  
1500 Glendale Avenue  
Sparks, NV U.S.A. 89431-5902  
Telephone (775) 356-0606  
Fax (775) 356-1413

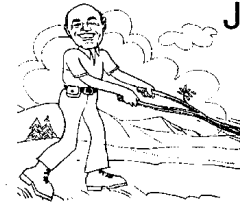
Chris Ioannakis, Managing Director,  
Analytical Services

**Elko Office**  
2320 Last Chance Road  
Elko, NV U.S.A. 89801-4852  
Telephone/Fax (775) 738-9100

E-mail: AALADMIN@aallabs.net  
Website: www.aallabs.com



**American  
Assay &  
Environmental  
Laboratories**



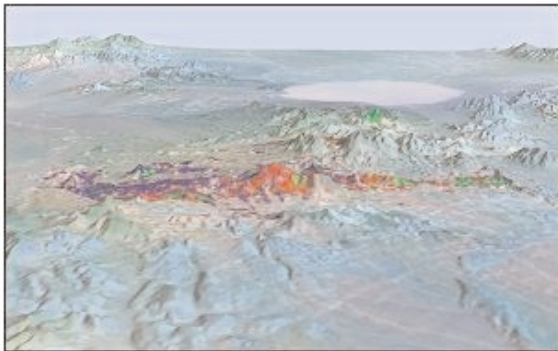
**JOSEPH R. ANZMAN**

*Exploration Geophysicist*

- consulting
- interpretation
- project management
- geophysical surveys
- domestic & foreign

P.O. Box 370526  
Denver, Colorado 80237  
303-337-4559  
telephone/fax

## EXPLORATION with ASTER



*Alteration Image, Goldfield, Nevada*

- **CUSTOM CORRECTED DATA**
- **ALTERATION IMAGERY**
- **EXTENSIVE GLOBAL ARCHIVES**

WWW.ASTERIMAGES.COM  
email: pusa@rmi.net  
dwc@overhill-imaging.com

## RENT A PIMA!!



IDENTIFY and MAP ALTERATION  
MINERALS IN THE FIELD and CORE

*CONTACT US FOR Rentals and Services*

*Spectral International, Inc*  
303 403 8383 pusa@rmi.net  
www.specmin.com

## MACKAY CONNECTIONS CLUB AT U.N.R.

Hello All! My name is Wilson Shumway and I am the president of the Mackay Connections Club. The Mackay Connections Club is a club on the UNR campus that brings together all of the earth sciences into one. We encourage Geologists, Geographers, Mining Engineers, Geologic Engineers and many others to join us every Tuesday at noon for a meeting that lasts about forty minutes. The club goes on field trips to local spots of interest to our students, such as our Yosemite trip scheduled for the 22<sup>nd</sup>, 23<sup>rd</sup>, and 24<sup>th</sup> of September. We would also like to extend an invitation to anyone in the industry to come and have a question and answer talk with our students. This is an impromptu talk where we can ask you questions about your career experience, and for us to make connections with you. Our officers are myself, my Vice-President Diana Hooper, my Secretary Erin Doerr, and my Treasurer Kevin Friskel. Some of our members are also members of GSN, and we encourage this in every meeting. Now you know a little more about this club, we hope to hear from you. If you would like to speak, you can contact Leslie Rumph at UNR at 327-2056. Thank You!

*Wilson Shumway*



## ACTIVITY UPDATE

Mike Brady, August 2006  
www.activityupdate.com

### NEVADA

Queenstake Resources Ltd. announced that recent drill results at the Starvation Canyon Project include 410-420 feet @ 0.224 opt Au (TJ-246); 380-390 ft @ 0.150 opt Au (TJ-247) and 280-420 ft @ 0.459 opt Au (TJ-248). (resource = 676,400 tons @ 0.280 opt Au measured+indicated) *Press Release: August 3*

Agnico-Eagle Mines Ltd. announced that it acquired an option to earn a 51% interest in the Utah Clipper, Crestview and Laura properties from Columbus Gold Ltd. for \$6,500,000 in exploration expenditures over 7 years.

*N.M.: July 7*

Staccato Gold Resources Ltd. announced that recent drill results at the South Eureka/Lookout Mountain Project include 132.7-144 meters @ 0.291 opt Au (BH06-2); 123.8-152.9 meters @ 0.225 opt Au (BH06-7) and 0-16.8 meters @ 0.516 opt Au (BH06-10). (resource = 13,200,000 tons @ 0.020 opt Au measured+indicated) *M.J.: August 4*

Great Basin Gold Ltd.(50%) announced that based on recent drill results, the Hollister Development Block aggregates 717,200 tons @ 1.327 opt Au, 7.2 opt Ag inferred. (was 717,200 tons @ 1.295 opt Au, 7.03 opt Ag)

*M.J.: August 4*

AuEx Ventures Inc. announced that recent drill results at the Trinity Project include 5-40 ft @ 0.92 opt Ag (TSD-01); 35-65 ft @ 1.04 opt Ag (TSD-02); 70-117 ft @ 1.21 opt Ag (TSD-02); 130-210 ft @ 0.80 opt Ag (TSD-03); 135-150 ft @ 9.31 opt Ag (TSD-07); 50-90 ft @ 1.19 opt Ag (TSD-08) and 10-150 ft @ 0.80 opt Ag (TSD-09). (resource = 1,000,000 tons @ 5.25 opt Ag) *Press Release: August 3*

Reese Corp. announced that it acquired an option to earn an 80% interest in the Bailey Hills Property from Consolidated Global Minerals Ltd. for \$25,000 cash and \$4,000,000 in exploration expenditures over 3 years.

*Press Release: August 3*

Kinross Gold Corp. announced that it purchased an additional 3,500,000 shares of X-Cal Resources Ltd. for \$991,000 to now hold 13,000,000 shares (10.5%).

*Press Release: August 9*

Queenstake Resources Ltd. announced that recent drill results at the Jerritt Canyon/Mahala Project include 50-70 ft @ 0.652 opt Au (C40531); 50-80 ft @ 0.908 opt Au (C40538); 60-100 ft @ 0.528 opt Au (C40545); 60-100 ft @ 1.821 opt Au (C40551); 350-365 ft @ 0.328 opt Au (LX656)

and 360-375 ft @ 0.615 opt Au (LX658). (resource = 420,600 tons @ 0.296 opt Au measured+indicated)

*Press Release: August 16*

Royal Standard Minerals Inc. announced that based on recent studies at the Fondaway Canyon Project, the Paperweight and Half Moon veins aggregate 390,600 tons @ 0.428 opt Au indicated and 372,800 tons @ 0.409 opt Au inferred. (was 4,000,000 tons @ 0.150 opt Au)

*Press Release: July 26*

Carlin Gold Corp. announced that it would acquire Toquima Minerals Corp. for 6,772,224 of its shares.

*Press Release: July 14*

Fischer Watt Gold Co. announced that it acquired an option to earn a 100% interest in the Cambridge Property from Grandcru Resource Corp. for a \$1,000,000 purchase price.

*Press Release: August 3*

Centerra Gold Inc.(62%) announced that recent drill results at the REN Project include 856.2-859.2 meters @ 0.194 opt Au (RU100C); 877.5-882.1 meters @ 0.635 opt Au (RU100E); 189-192 meters @ 0.096 opt Au (RU-103); 429.8-432.8 meters @ 0.162 opt Au (RU-104); 848.9-868.7 meters @ 0.543 opt Au (RU-105C) and 477-480 meters @ 0.200 opt Au (RU-107). (resource = 3,028,300 tons @ 0.398 opt Au indicated)

*Press Release: July 26*

## GSN MEMBERS' PERSONAL NOTES & NEWS

### Career Related Moves

► **Teck Cominco American Incorporated** announces it has opened an office in Reno as the base for its U.S. exploration and mine development activities, with Paul MacRobbie as Exploration Manager – U.S. Paul has recently relocated to Reno from Teck Cominco in Vancouver. Rounding out the staff are Quentin Browne, Senior Geologist; Moira Smith, Senior Geologist; Brigitte Dejou, Senior Project Geologist; Gail Liebler, G.I.S./Data Supervisor; and Cheri Reimann, Office Manager. The office is located at 6590 S. McCarran Blvd., Suite A, Reno, NV 89509. They invite you to stop by and say hello.

**Members are encouraged to keep us informed about their own career related moves and awards, and deaths of GSN colleagues. Your information needs to be received by Laura at [gsn@mines.unr.edu](mailto:gsn@mines.unr.edu) by the 21<sup>st</sup> of each month.**

## EARTH SCIENCE WEEK PUBLIC FIELD TRIP, OCTOBER 7<sup>TH</sup> OR 8<sup>TH</sup>

D.D. LaPointe, *GSN Education Committee Co-Chair*

The road log for our annual NBMG Earth Science Week public field trip "Rockin' Along the River" is now up and available on the NBMG website. I hope some of you will please sign up to come along on either October 7<sup>th</sup> or 8<sup>th</sup> to help answer questions the participants have about rocks and geology. It's a fun day and you may even discover some local geologic history you were unaware of.

See announcement and sign up at:

<http://www.nbmng.unr.edu/esweek/announce6.pdf>

Preview the route and road log at:

<http://www.nbmng.unr.edu/esweek/trip6.pdf>

The goal is to educate the public about local geology and why it is important. The more geologists we can get to come along to talk to and interact with the public, the better able we are to get the message out, so please sign up to come along on one of these days if you can. This year's trip will roughly follow the Truckee River between Verdi and Wadsworth with several stops to discuss geology and collect rocks. As in past years, we will caravan in personal (high-clearance) vehicles, carpooling where possible.

National Earth Science Week is promoted by AGI and this year's national ESW theme is: "Be A Citizen Scientist!" More Earth Science Week information and ideas are on the AGI website at [www.earthsciweek.org](http://www.earthsciweek.org).

For more information call D.D. at 775/784-6691 x134.

## TIN CUP TEA & CHUCK WAGON BBQ

Rachel Dolbier, *GSN Education Committee Co-Chair*

Over 1,200 people attended the 2006 Tin Cup Tea and Chuck Wagon BBQ held on September 9<sup>th</sup> at the Governor's Mansion in Carson City. This wonderful fundraiser event was hosted by Governor and First Lady Guinn as a benefit for the W.M. Keck Earth Science and Mineral Engineering Museum at the Mackay School of Earth Sciences and Engineering, University of Nevada, Reno and the Nevada State Museum in Carson City. Guests enjoyed a western BBQ and lots of different libations, danced to the music of David John and the Comstock Cowboys, and had a chance to bid on items auctioned off by Governor Guinn. Master of Ceremonies John Tyson presided over the round-up of sponsors that included Barrick Goldstrike Mines, Inc., Enviroscentists, Geotemps, Inc., Kappes Cassiday & Associates, Kinross Gold U.S.A., Inc., Mine Development Associates, Newmont Mining Corporation, Nevada Mining Association, Queenstake Resources USA, Inc., and Jim & Colleen Taranik.

This year's event was the most successful to date, with more than \$100,000 raised in total. The museums will use these funds to improve operations and provide new programs for the public. Thanks to all of you who attended and we hope that we will continue to have this wonderful event in the future!



## Nevada Bureau of Mines and Geology NEW PUBLICATIONS

**P-17** - Major mines of Nevada 2005, Mineral industries in Nevada's economy, by Doug Driesner and Alan Coyner, Nevada Division of Minerals, \$2.00 or free on the Web

**OF06-8** - Surficial geologic map of the Ivanpah Valley area, Clark County, Nevada, by P. Kyle House, Alan R. Ramelli, and Brenda J. Buck, scale 1:50,000, \$17.00 or free on the Web

**OF06-9** - Geologic assessment of piedmont and playa flood hazards in the Ivanpah Valley area, Clark County, Nevada, by P. Kyle House, scale 1:50,000, \$17.00 or free on the Web

**OF06-10A** - Geologic assessment of piedmont flood hazards in the Ivanpah Valley part of the Cottonwood Pass and Potosi 7.5' Quadrangles, Clark County, Nevada: House, by P. Kyle House, scale 1:24,000, \$15.00 or free on the Web

**OF06-10B** - Geologic assessment of piedmont flood hazards in the Ivanpah Valley part of the Goodsprings and Shenandoah Peak 7.5' Quadrangles, Clark County, Nevada, by P. Kyle House, scale 1:24,000, \$16.00 or free on the Web

**OF06-10C** - Geologic assessment of piedmont and playa flood hazards in the Ivanpah Valley part of the Jean and Bird Spring 7.5' Quadrangles, Clark County, Nevada, by P. Kyle House, scale 1:24,000, \$15.00 or free on the Web

**OF06-10D** - Geologic assessment of piedmont and playa flood hazards in the Ivanpah Valley part of the Hidden Valley, Sloan, Sloan NE, and Sloan SE 7.5' Quadrangles, Clark County, Nevada, by P. Kyle House, scale 1:24,000, \$16.00 or free on the Web

**OF06-10E** - Geologic assessment of piedmont and playa flood hazards in the Ivanpah Valley part of the State Line Pass and Ivanpah Lake 7.5' Quadrangles, Clark County, Nevada, by P. Kyle House, scale 1:24,000, \$15.00 or free on the Web

**OF06-10F** - Geologic assessment of piedmont and playa flood hazards in the Ivanpah Valley part of the Roach and Desert 7.5' Quadrangles, Clark County, Nevada, by P. Kyle House, scale 1:24,000, \$15.00 or free on the Web

**OF06-10G** - Geologic assessment of piedmont flood hazards in the Ivanpah Valley part of the McCullough Pass and McCullough Mountain 7.5' Quadrangles, Clark County, Nevada, by P. Kyle House, scale 1:24,000, \$15.00 or free on the Web

**USGS OFR 2006-1197** - Gravity, magnetic and physical property data in the Smoke Creek Desert area, northwest Nevada, by Tilden, Ponce, Glen, Chuchel, Tushman, and Duvall, free on the Web at: <http://pubs.usgs.gov/of/2006/1197>

You may place an order or check for shipping charges through our shopping cart at: <http://www.nbmng.unr.edu/sales.htm> or by calling 775/784-6691 x2.

# FREE 1990 SYMPOSIUM PROCEEDINGS

In an effort to reduce inventory of the 1990 "Geology and Ore Deposits of the Great Basin" Symposium Proceedings, the GSN Executive Committee has decided to offer ONE free set to any CURRENT GSN MEMBER who would like to pick a set up in Reno. Your 2006/2007 membership dues must be paid up to receive the free books. You may also have a set shipped to you for the price of \$12 Shipping & Handling anywhere in the U.S. Foreign members should contact the GSN office to ask about shipping costs to their country. If you already have a set (which most of you do!) you can pick up a second set for your office or pay the shipping and have it donated to your favorite University or Library.

The 2-volume, 1,267 page sets weigh approx. 10 lbs./each and include 51 full-length technical papers. Please contact Laura Ruud at the GSN office to get your set of 1990 Proceedings today! This offer is good while supplies last!!!

## UPCOMING EVENTS

**Oct 1** – GSN 18<sup>th</sup> ANNUAL PICNIC – Rancho San Rafael Park, Highlands Pavilion, noon to 4 pm. Contact the GSN office to register.

**Oct 5** – NV Petroleum Society Meeting. Speaker: Jeff Hulen, Consultant, title: "New Perspectives on the Geothermal-Petroleum-Gold Connection in the Great Basin". Austin's Restaurant, 7671 S Virginia St, Reno, cocktails-6:30 pm, dinner-7:00 pm. (\$17 for members; \$19 for non-members).

**Oct 11** – WINNEMUCCA CHAPTER MEETING: Speaker: Eric Struhsacker, AuEx Ventures Inc. Title: "Carlin-Style Gold Prospects of the Pequop Project, Elko County, Nevada". The Martin Hotel, W Railroad and Melarkey Streets. Drinks at 6:30 pm, Presentation at 7:00 pm. Sponsored by American Assay Laboratories. Contact Ivan Johnston, Chapter President, for more info, 775/635-4292, Ivan.Johnston@Newmont.com.

**Oct 17** – SME's Northeastern NV Section Technical Conference. "2006: A Golden Year". Elko Convention Center, Elko, NV. Visit <http://www.smenet.org/SCRD/SCRDInfo.cfm?BUID=71>.

**Oct 19** – ELKO CHAPTER MEETING: Paul Klipfel, Mineral Resource Services Inc. Title: "Passive Margin Settings and Giant Gold Deposits – A Curious Relationship for Sediment Hosted Vein and Sediment Hosted Disseminated Deposits". Western Folklife Center, 501 Railroad St, Elko. Drinks at 6:00 pm, talk at 7:00 pm. Call Richard Reid at 775/778-3912 for more information.

**Oct 20** – GSN MEMBERSHIP MEETING: Speaker: David Emmons, Kinross Gold Company. Title: "Geology of the Round Mountain Gold Deposit, Nye County, Nevada". Reno Elks Lodge, 597 Kumle Ln, Reno, NV. Drinks at 6 pm, dinner at 7 pm, talk at 8 pm. Contact Laura Ruud for reservations, 775/323-3500 or [gsn@mines.unr.edu](mailto:gsn@mines.unr.edu).

**Oct 22-25** – Geological Society of America Annual Meeting, Philadelphia, PA. "Building on a Foundation of Discovery". Early registration due Sept. 18, 2006. [www.geologicalsociety.org](http://www.geologicalsociety.org) or call +1-888-443-4472.

**Oct 24-26** – Minerals South Conference at the Prestige Lakeside Resort in Nelson, BC. The conference is sponsored by the Chamber of Mines of Eastern BC. Look for updates on courses and events on this website or on the link below. For information, contact Nikki Olsson at (250) 352-5242. Email: [chamberofmines@netidea.com](mailto:chamberofmines@netidea.com) <http://www.cmebc.com>.

**Oct 26** – SO. NEVADA CHAPTER MEETING: Speaker: Dave Buesch of the USGS will be speaking on structural geology in the Yucca Mountain area. UNLV Lily Fong Geoscience Building, Room 105, refreshments at 6 pm, talk at approx. 6:30 pm. Contact Bruce Hurley, Chapter President at 702/295-1284, [rocks2bwh@aol.com](mailto:rocks2bwh@aol.com).

**Oct 27-29, Fri-Sun** – GSN FALL FIELD TRIP – Sites to be visited include Bald Mountain, Archimedes and Stacatto Resources South Eureka Project. See Registration form on page 2 of this newsletter.

**Nov 14-16** – EPA Hard Rock 2006 Sustainable Modern Mining Applications Conference to be held at the Doubletree, Tucson Reid Park in Tucson, AZ. This conference will provide participants with an opportunity to examine and discuss current and future environmental issues which provide sustainable opportunities for efficient extraction and maximum utilization of resources in mining. Contact Alina Martin, 703/318-4678. Email at [tcs-events@saic.com](mailto:tcs-events@saic.com), <http://www.epa.gov/hardrockmining/hardrock/hardrock2006.htm>.

**Dec 4-8** – Northwest Mining Associations 112<sup>th</sup> Annual Meeting, Exposition and Trade Show will be held at John Ascuagas Nugget Casino-Resort in Reno, Nevada. For information, please see the home page on this website or call Pat Heywood at the NWMA office in Spokane, WA at 509/624-1158. Email: [pheywood@nwma.org](mailto:pheywood@nwma.org), <http://www.nwma.org>

*Thank you to our  
generous donors*

### GSN Foundation

#### SILVER LEVEL DONORS \$100 - \$499

Anonymous Donor	Rich Lorson
William Berridge	David Mathewson
Pamela Klessig	Dan Rovig
Joe Laravie	

#### BRONZE LEVEL DONORS Up to \$100

Kristen Benchley	Bert Jeffries
Robert Bennett, Jr.	Thomas Kilbey
Sarah Branch	Christopher Magee
Richard "Criss" Capps	Larry Martin
Elizabeth Crafford	Melissa Mateer
Curt Dechert	Bob McCusker
Robert Forest	Ron L. Parratt
Richard Fox	Roger Steinger
Mae Gustin	Alan Wallace
Richard H. Harris	

### Student Dinner Fund

(We had 16 students eat dinner for free at the September 15<sup>th</sup> meeting thanks to the generosity of our GSN members!)

Del Flint	Melissa Mateer
Robert Forest	David Mathewson
Richard Fox	Bob McCusker
Richard H. Harris	John Norby
Robert Horton	Dan Rovig
Bert Jeffries	Roger Steinger
Rich Lorson	

# GEOLOGICAL SOCIETY OF NEVADA



gsn@mines.unr.edu • www.gsnv.org  
Telephone (775) 323-3500 FAX (775) 323-3599  
Post Office Box 13375  
Reno NV 89507  
USA

NON PROFIT  
ORGANIZATION  
U.S. POSTAGE  
PAID  
RENO, NV  
PERMIT NO. 931

## MEMBERSHIP RENEWAL NOTICE FOR 2006/2007

Reminder that your 2006/2007 Membership Dues are due by October 31, 2006. Dues this year are \$35.00 with no additional Chapter Dues. Please check the appropriate box on the Membership Form if you would like to be affiliated with one of the Chapters in Elko, Winnemucca or Southern Nevada.

You can renew your dues now by downloading the form from the GSN website: [www.gsnv.org](http://www.gsnv.org) and mail it with your payment to GSN, PO Box 13375, Reno, NV 89507 or fax a credit card payment to the office at 775/323-3599.

Please make sure to update any address changes, especially emails and QP status. When you renew your membership dues this year, please consider making a tax-deductible donation to the GSN Foundation or Student Dinner Fund. Foundation dollars are used exclusively for the Kindergarten through 12<sup>th</sup> grade Field Trip Grant Program, Nevada Mapping Grants and University of Nevada scholarships. The Student Dinner Fund is used to purchase dinner for students who attend the monthly membership meetings.

Unsure if you have already renewed your dues for this fiscal year? Please contact Laura Ruud at the GSN office. Thank you!