

GEOLOGICAL SOCIETY OF NEVADA NEWSLETTER

Geological Society of Nevada, 2175 Raggio Parkway, Room 107, Reno, NV 89512
(775) 323-3500 - Hours Monday -- Friday 8-3
Website: www.gsnv.org • E-mail: gsn@gsnv.org



September 2009, Vol. 24, No. 7

Published monthly except June and July

PRESIDENT

Mike Ressel
Kinross Gold USA, Inc
mikeressel@sbcglobal.net

VICE PRESIDENT

Peter Vikre
US Geological Survey
pvikre@usgs.gov

SECRETARY

Steve Carroll
Schlumberger Water Services
scarroll2@slb.com

TREASURER

Bob Kastelic
Consulting Geologist
bob_kastelic@yahoo.com

MEMBERSHIP CHAIR

Dave Emmons
Kinross Gold USA, Inc
demmons@sbcglobal.net

PUBLICATION CHAIR

Marilyn Miller
AuEx Ventures, Inc.
marilyn.miller1@sbcglobal.net

OFFICE MANAGER

Kathy Sestanovich
gsn@gsnv.org

CALENDAR OF GSN EVENTS

- Sept. 9 Wednesday** **WINNEMUCCA CHAPTER** *(Every 2nd Wednesday of the month)*
The monthly meeting will be held at the Martin Hotel, 94 West Railroad Street. Drinks and appetizers at 6:30 PM, speaker at 7:00 PM. Sponsors for the evening will be Boart Longyear (Marty Dennis). Speakers for the evening will be Radu R. Conelea (Rye Patch Gold Corp). His talk will be titled **"Geology and Gold-Silver Mineralization of the Wilco Project, Pershing County, Nevada – A Tale of Two Systems"**. (see abstract on page 4). For more information contact Matt Hoffer at (775) 635-4756.
- Sept. 17 Thursday** **ELKO CHAPTER** *(Every 3rd Thursday of the month)*
The monthly meeting will be held at the Western Folk Life Center, 501 Railroad Street. Refreshments at 6:00 PM, talk at 7:00 PM. Speaker and sponsor for the evening to be announced. For more information contact Jim Essman at (775) 778-4374.
- Sept. 18 Friday** **GSN MEMBERSHIP MEETING** *(Every 3rd Friday of the month)*
The monthly meeting will be held at the Reno Elks Lodge, 597 Kumle Lane, Reno, NV. Drinks at 6:00 PM, dinner at 7:00 PM, and talk at 8:00 PM. Sponsor for the evening will be Boart Longyear. Speaker for the evening will be Scott Price, Consultant. His talk will be titled **"The Battle Mountain – Eureka Trend: Evidence for a Collapsed Mesozoic to Early Tertiary Compressional Uplift"**. (see abstract on page 3). Dinner reservations must be made by 1:00 PM Wednesday, September 16th. Contact Kathy Sestanovich at (775) 323-3500 or e-mail gsn@gsnv.org for reservations.
- Sept. 24 Thursday** **SOUTHERN NEVADA CHAPTER** *(Every Last Thursday of the month)*
The monthly meeting will be held at the Lilly Fong Geoscience building at UNLV, Room 105. Social hour begins at 6:45 pm with the speaker starting at roughly 7:15 pm. The Southern Nevada Chapter is still in need of a sponsor and is looking for Silent Auction Donations. For more information contact Josh Bonde at 702-468-2500 or Swapan Sahoo at 773-402-9347.

[May 14-22, 2010 GSN Symposium, Great Basin Evolution & Metallogeny](#)

FROM THE PRESIDENT

Mike Ressel, *GSN President 2009-2010*

Rambles

Down the road 150 years ago, the Comstock Lode was discovered on the east flank of Mount Davidson. The simple act by a couple of prospectors was the catalyst for a series of events that snowballed into greatness. Like most major ore discoveries, the Comstock's history isn't without controversy on who found what and when, and it may be that its true discovery occurred two years prior to the 1859 observed date. As fate would have it, the discoverers are all but forgotten, having made choices that yielded quick and necessary pittance for their efforts. The Comstock was the West's second major precious-metals boom following the Gold Rush, and its resulting mines played a role in shaping the region's economy and politics. Nevada's identity and statehood in large part owe their establishment to the discovery and the economic prosperity that followed. Thus, the importance of place as defined by the Comstock is born out to some degree in every "Nevada" entity, including the Geological Society of Nevada.

GSN SEPTEMBER MEETING SPONSOR



Marty Dennis
Zone Manager

Boart Longyear Company
www.boartlongyear.com · marty.dennis@boartlongyear.com
605 Union Pacific Way
PO Box 2748, Elko, NV 89803
Main: 775-738-1980 · Mobile: 775-934-7768
Fax: 775-753-9229

(Continued on page 2)

(Continued from page 1)

Did O'Riley and McLaughlin, the prospectors who first came across bonanza ores of the Comstock, believe in what they had uncovered under Mount Davidson? You bet they did, before being romanced on the sight of a few greenbacks. But greatness isn't much more than mediocre, at least to some degree: it is the diamond in the rough. If their discovery was the trigger, it was the Comstock's Great Four who followed that were the shot.

As geoscientists, we work in a world of possibilities and probabilities. We observe today to understand yesterday. Our world is much more complicated, fragmented, and overlapping than the real-time, controlled, and equilibrated environment of a bacteria culture in a petri dish. Ours is a mosaic of former worlds, some of which go entirely undetected and others of which contain the bits that help to unravel The Story. Occasionally, what appears mediocre at first becomes something extraordinary. To a large degree, what propel us are the epiphanies - those gems in understanding that make us explore where we haven't explored before. An epiphany of sorts on the Comstock was the assaying for silver in the blue clay that was otherwise the gold ore. Years later in north-central Nevada, epiphanies came with the recognition of an alignment of carbonate windows and of invisible gold. Epiphany also came in the form of new technologies, of reverse-circulation drilling, heap leaching, and refractory ore processing. Apparently, epiphany breeds epiphany. Epiphany motivates, it reinforces predictability, and to every manager's glee, it lowers risk. Coming from a gambling state, anything that improves slim odds is good.

So, what epiphany lies ahead in Nevada's resource industry? I focus here on Carlin-type deposits because they have produced the lion's share of Nevada's 180+ million ounces of gold, and nearly all since 1965. Have we exhausted our search for Carlin-type invisible gold in and around Paleozoic carbonate windows? Can sizeable gold deposits be associated not only with windows through upper-plate rocks, but in other settings too? To the latter, of course, we've known that for a while. The recent re-discovery of gold in the Pequop Mountains in northeastern Nevada has stirred interest not only in the style and tenor of its alteration and mineralization, which is hallmark Carlin-type gold, but in its setting beyond the leading edge of the Roberts Mountains thrust. It seems a crucial element in the Carlin story is missing at Pequop, that of the upper-plate - that is, you can't have a "window" without an upper plate. Looking critically at the Carlin story, there emerge other clues that indicate that windows are but one ingredient for some Carlin-type deposits. Even in Window Country, many important deposits are hosted structurally well above Lower Paleozoic carbonate windows, for example, Chimney Creek in Antler overlap limestone and upper-plate basalt, the Mega Pit at Twin Creeks in whatever you might ascribe the Comus Formation to be, Millenium at Marigold windowless in Ordovician upper-plate quartzite, Cove in Triassic carbonates, Lone Tree in Havallah siltstone of the Sonoma allochthon and Antler overlap sandstone. And, what about the Utah examples, in settings entirely unrelated to the Antler Orogeny at Mercur, Barney's Canyon, Melco, and the Drum Mountains? But, even explorers get lured into taking the route more traveled or understood. We find comfort in patterns and models, but need to take heed of the exceptions.

Experience and observation tell us that Carlin-type deposits are epigenetic. Ore fluids cut through and affected, to some degree,

all of the rocks they encountered, including Tertiary rocks where present. Yes, the fluids were opportunistic, and they preferentially mineralized reactive fine-grained limestone over chert where given the chance. Fluids, being low density, migrated in more permeable units to structural highs in horsts and the tops of anticlines, often forming broad expanses of ore. In contrast, less favorable hosts for broadly-distributed mineralization prove in many cases to be the better high-grade, fault-controlled hosts: massive limestone, hornfels, breccia bodies, and dikes. Footwalls are preferentially mineralized in Carlin-type deposits. Why? A footwall relationship underscores the importance of structural traps and stratigraphic caps and attests to an architecture already established at the time of mineralization. This leads to another feature of Carlin-type deposits: they are relatively young, with a compelling argument that most deposits in north-central Nevada are Eocene. With all this in mind: e.g., Carlin-types deposits are young, epigenetic, with multiple host rocks, we have a lot of under-explored real estate in the Great Basin. So, back to where we go next? We are already there. We are stepping out in Nevada as we've done before, albeit a bit more slowly and cautiously, heading east into the new frontier of the dreaded carbonate platform, of dealing with rocks of the wrong age, and heaven forbid, of upper-plate heritage. Finding something new will require trying something new, and examining more closely those several deposits that are exceptions to the rule. Our resource industry is thriving. Let's continue to promote exploration beyond the farthest drill hole as much as we do between drill holes. After all, it was Comstock silver that got us here, but "gold that doth not glitter" which sustains us.

With that ramble, September's meetings continue on the theme of geologic thinking: one looking through the rear-view mirror on a theory now proven, the other new, with only time to tell us right from wrong. In Winnemucca on September 9th, Radu Conelea will discuss the method that went into the recognition of the Conelea overturned fold, the major ore-controlling feature of the 20 Moz behemoth that is Twin Creeks, this, some 20 years ago. For the Reno meeting on September 18th, Scott Price will summarize his geologic observations supporting a relatively young age for the development of the Battle Mountain-Eureka gold belt. Does this straight-as-an-arrow belt really need to be way older than any of its exposed rocks as most interpretations support? If so, it has survived marvelously intact.

As difficult as geologic interpretation can be, predicting shifts in the metal markets are every bit as hard. Doug Silver's Summer Series tradition of market commentary provided a GSN audience with his usual excellence in insight and stimulating discussion on the other side of our business. Thanks go to Ken & Phyllis Cunningham for a job well done in hosting the event!

Finally, we welcome your views in the form of concise newsletter editorials of interest to the GSN audience and geosciences in general. Got a beef or comment about a talk, or maybe a president's column? Global warming? Claim fee hikes? Mining law reform? Carbon sequestration? Just send your messages to the gsn@gsnv.org. All we ask is that you keep it professional, polite, and fairly short.

Thanks and happy trails-

Mike

***Thanks to the Ken & Phyllis Cunningham and Miranda Gold
for hosting the Doug Silver Summer Series***

GSN September 18, 2009 Membership Meeting

RESERVATIONS ARE REQUIRED

GSN CAN NO LONGER GUARANTEE DINNER SEATING WITHOUT ADVANCE RESERVATIONS.
Please call 775-323-3500, Fax 775-323-3599 or e-mail gsn@gsnv.org by 1:00 PM, Wednesday, September 16, 2009.
Social Hour: 6:00 PM – Dinner: 7:00 PM – Speaker: 8:00 PM

Location: Elks Lodge, 597 Kumle Lane, Reno, NV
Directions: across (W) from the Reno-Sparks Convention Center
(S. Virginia Street, behind the Les Schwab Tire Center)

We are offering prepayment for the dinner meeting. There will be a separate line for people who have prepaid to pick up their badge. Your receipt will be either given to you at the GSN office or sent by e-mail.

**Prepaid dinner reservations will only be accepted for the current monthly meeting.
Cancellations must be received two days before the meeting in order for your money to be refunded.**

Download the prepayment form from the GSN website: <http://www.gsnv.org/membership.html>

The Battle Mountain – Eureka Trend: Evidence for a Collapsed Mesozoic to Early Tertiary Compressional Uplift

**Scott Price
Consultant, Elko, Nevada**

The Battle Mountain – Eureka Trend (BM-ET) is a northwest-aligned belt of gold deposits and 'lower plate windows' in north-central Nevada. The northeast boundary of this mineral belt is a physiographic and structural feature discernible on regional geologic maps and satellite images. This complex, northwest trending boundary feature divides zones of contrasting rock distribution and exposure. Strata concentrated northeast of the boundary feature suggest basin subsidence and infill: 1) Cretaceous to Eocene siliciclastic rocks and lacustrine limestone and, 2) late Eocene, Oligocene and Miocene volcanic and volcanogenic sedimentary rocks. Key rock units on the southwest side of the boundary feature include: 1) widespread, lower Paleozoic, sedimentary rocks, 2) Jurassic – Eocene, plutonic rocks and, 3) Miocene, hypabyssal, intrusive rocks of the southernmost, Northern Nevada rift. These exposures imply uplift and erosion as does the relative rarity of younger strata.

The northwest-trending BM-ET is partly coincident with, although regionally discordant to, the northeast-striking Roberts Mountains and Golconda thrust systems. Related northwest structural fabric is younger than the northeast Antler/Sonoma structures. A hypothetical, structural model is proposed here for the BM-ET involving Mesozoic to early Tertiary fold and thrust uplift, then, middle Miocene to Quaternary extensional collapse. The envisioned uplift extends from the Twin Creeks mine area to the Eureka area where it meets the Eureka thrust belt. Post-Antler folds and thrust faults have been described along the BM-ET, but are poorly age bracketed. Geologic relations permit and locally imply a west dipping, thrust fault along the northeast boundary of the BM-ET, with movement possibly as recent as middle Eocene. Cretaceous to Eocene, siliciclastic rocks northeast of the BM-ET are interpreted as syntectonic foreland deposits and are mildly folded. Late Eocene to Miocene, volcanogenic strata overlapped the northeast flank of the uplift subsequent to thrusting and cover much of the inferred thrust fault trace.

A prominent uplift would have existed when the postulated thrusting ceased. The uplift was diminished by erosion and by extensional collapse, through relaxation and normal offset on the original thrust fault. Basin and Range extensional deformation displays primarily northeast and north-south fabric. There is local northwest control of Basin and Range faulting along the BM-ET boundary feature, with some grabens truncating against it. Grabens in this area are primarily asymmetric with west-dipping, listric master faults, consistent with hanging wall collapse above west-dipping thrust faults. Lower Paleozoic rocks along the southwest flank of the Sheep Creek Range are interpreted as a non-collapsed remnant of the leading edge of the BM-ET thrust uplift, with a foreland/burial basin to the northeast, and a younger collapse basin to the southwest. Collapse basins within the BM-ET lack rhyolite and basalt flow rocks that are abundant along the Northern Nevada rift immediately to the northeast.

GSN Winnemucca Chapter Meeting September 9, 2009

“Geology and Gold-Silver Mineralization of the Wilco Project,
Pershing County, Nevada – A Tale of Two Systems”
Radu R. Conelea and William C. (Bill) Howald
(Rye Patch Gold Corp)

Abstract

The Wilco project area is located in the Willard Mining District, approximately 100 miles northeast of Reno, Nevada, and contains the Willard and Colado gold and silver resources representing epithermal low sulfidation (quartz ± calcite ± adularia) type deposits. Mineralization is controlled by favorable lithology and structure.

The Wilco property area has a long history of exploration, development and production dating back to the early 1900's. The Willard mines produced free-milling gold from surface exposures, and in the 1990's, Western States recovered gold and silver from heap-leach operations. Rye Patch Gold optioned the Wilco Project from Newmont Mining Company in 2006 and based on recent exploration drilling completed a new resource estimate for the Wilco project containing 788,000 ounces of gold and gold equivalent in the measured and indicated category and 2,084,315 ounces of gold and gold equivalent in the inferred category.

The Willard gold and silver mineralization is hosted by Late Triassic to Early Jurassic shallow marine and deltaic sediments of the Auld Lang Syne Group. The lithologies are represented by reactive calcareous siltstones and limestone overlain by fissile non-calcareous siltstone. The underlying claystone and siltstone are only locally mineralized along fault zones. The most important structural features controlling the gold mineralization are the siltstone-claystone contact which is gently folded into an easterly-trending, gently westward plunging antiform, and high-angle faults trending E-W, N-S and NE. This contact was structurally activated, forming a highly fractured and brecciated zone, used by the gold and silver bearing hydrothermal solutions. Alteration is dominated by decarbonatization, silicification and quartz ± calcite ± adularia veining. Radiometric data from adularia rendered an age of 6.1 ± 0.3 m.y. for the mineralizing event at Willard; however, altered siltstone fragments have been found in the overlying rhyolitic volcanics suggesting multiple precious metal bearing events.

The Colado gold and silver resource is centered at the intersection of several high-angle faults trending NS, NW and E-W. From this center of hydrothermal activity, the mineralizing solutions spread laterally into a lithologic package consisting of Late Triassic to Early Jurassic siltstones and Tertiary andesite and rhyolitic rocks. The alteration follows bedding planes and internal layering within the volcanics, forming a westward-skewed, mushroom-shaped silica zone that approximates the mineralized envelope. High-level of low-sulfidation-type alteration is present at Colado and is represented by a combination of very fine grained silica replacement, quartz-chalcedony-opal veining, hydrothermal breccias, argillization, propylitization, pyritization and oxidation. There is a rough correlation between the overall dimension of the strongly silica-altered zone and gold mineralization. Gold is probably controlled by fine, randomly oriented silica stockworks and veinlets. Higher grade zones occur along favorable bedding horizons, in close proximity to the intersecting feeder structures. The Colado project area lies within a weak geothermal system with hot water approaching 180°F encountered in most drill holes.

It is with great sadness that GSN announces the death of Coral Everson

Coral Marguerite Everson passed away peacefully on August 14, 2009 in the presence of family and friends after a short battle with Creutzfeldt-Jacob Disease.

Coral was born February 27, 1957 to Thor and Charlotte Garaas in Williston, North Dakota. After graduating from Williston High School, she went on to earn bachelor degrees in music, education and business, along with master degrees in counseling and psychology. She began working in the Elko County School District in 1996 as a counselor and in 2008 received her degree in psychology where after she worked with the Special Services office for the district. Coral's passion was to help any and all kids. Whether they needed counseling, testing or just a #2 pencil, Coral was more than happy to help them out.

She is survived by her husband Curt Everson – Spring Creek, her biological children Tom Schmidt - Wheaton, Illinois and Paul Schmidt - Boston, Massachusetts, her step children Erin Rowley - Eagle Mountain, Utah, Rick Everson – Sandy, Utah and Jesse Everson – Sandy, Utah. She is also survived by her father Thor Garaas of Williston, North Dakota, her brother Bill Garaas of Cody, Wyoming, her sister Jane of Williston, North Dakota, her sister Wilma Carter of Kalispell, Montana, and her sister Janet Fredrickson of Minot, North Dakota. Coral was preceded in death by her mother Charlotte Garaas.

Coral will be deeply missed not only by family and friends, but also, parents, children and teachers of the Elko/Spring Creek area. We will miss her loving smile and her angelic voice. Her celebration of life will be held at 10:00 am on Saturday, August 22, 2009 at St. Paul's Episcopal Church in Elko. In lieu of flowers, donations can be given to the Coral Everson Music Education Fund (c/o Sirius Exploration, P.O. Box 1629, Elko, Nevada 89803) which will be set up to help middle school children participate in available music programs in their schools.

WINNEMUCCA CHAPTER MEETING SPONSOR



**BOART
LONGYEAR**

Drilling Services

Marty Dennis
Zone Manager

Boart Longyear Company
www.boartlongyear.com · marty.dennis@boartlongyear.com
605 Union Pacific Way
PO Box 2748, Elko, NV 89803
Main: 775-738-1980 · Mobile: 775-934-7768
Fax: 775-753-9229

**Thanks to Enviroscientists, Inc.
for sponsoring the
Elko August BBQ.**

FACES OF GSN

*James M. Wise, Geologist
Reno, Nevada
Newmont Mining Corporation*

I commenced my geological journey at San Diego State University, alternating between field trips to the Cretaceous turbidite fans exposed in the beach cliffs, Pacific margin strike-slip faults that shuffle the deck, and detachment faults of the Colorado River extensional corridor, which laid history on their side. Field camp took me into the chaotic melange exposed in the Channel Islands. After graduation, I spent a summer on the Big Island of Hawaii working as a NAGT field intern with the U.S. Geological Survey at the Hawaiian Volcano Observatory. This was followed by a year with the Survey's Water Resource Division working on hydrologic basin studies in California.

In 1992, I moved to Reno, Nevada to pursue a M.S. degree in geology, selecting UNR for its proximity to the Sierra Nevada. In 1996, I completed a structural geology-oriented thesis with Rich Schweickert on the Mount Morrison roof pendant in the High Sierra near Convict Lake, California. To stretch out the process, and to earn some bucks, I started working in the mineral industry in 1995 with Independence Mining Company at the Jerritt Canyon District, seeing for the first time Carlin-type deposits. In 1998, after three years of living and working out of Elko, and watching the gold price plummet, I realized a shift was required to advance my career and to continue doing geology.

I spent the 1998 field season mapping in Perú for Buenaventura, which was testing the waters for funding a doctoral study in regional geology, once again at UNR, only this time under Don Noble. Extended field seasons were spent in Perú during 1999 and 2000 doing many geological mapping projects and culminating in mapping 1,200 km² in the Ayacucho intermontane basin of the Andes. This research provided for regional transects of the Andes, from the steamy upland jungle of the Amazon basin to the hyperarid Pacific coast, mapping the world-renowned Huancavelica mercury district, and quadrangle mapping at the silver/polymetallic mining districts of Castrovirreyna, Huachocolpa, and Julcani. Graduating in 2004, and still facing a little-changed mineral industry that was reluctant to hire directly, I worked two years on contract with Newmont at Northumberland, while sending out feelers for teaching positions at various universities. Finding the academic realm incredibly competitive, apparently unwilling to hire anyone without a big, fat taxpayer-funded NSF grant already in hand, I decided to abandon the academic pursuits and focus on gold exploration.

I've been on staff with Newmont's exploration team for the past three years and have been ghosting around the state for the last six years, keeping a residence in Reno, and enjoying all the culinary delights of rural Nevada. During this time, I completed a decade project, having written a book titled "Mount Whitney to Yosemite: the Geology of the John Muir Trail." Yes, there is geology out there that is not centered on gold! Nevertheless, I am acutely aware that there are precious few field geologists in the state exploring. Where are the competitors? On the other hand, Newmont supports a high-level technology and resources for exploration in the state, with an excellent team that enriches the experience. I feel that a new era of exploration in Nevada is required, one where geologic mapping is a keystone. I am always looking for adventure, and my wife Yani, young son, Owen, and dog, Barley, go on frequent camping trips, both in and out of the state, and commonly with a geological theme.



ACTIVITY UPDATE

Mike Brady, June 2009

Nevada

www.activityupdate.com

Allied Nevada Gold Corp. announced the start-up of operations at the Hycroft/Brimstone Mine (reserve = 72,930,000 tons @ 0.016 opt Au proven+probable oxide) *M.J.*: June 19

Fronteer Development Group Inc.(51%) announced that recent drill results at the Long Canyon Project include 12.4-17.9 meters @ 0.194 opt Au (LCM03); 60.4-111.2 meters @ 0.121 opt Au (LCM13) and 94.5-111.6 meters @ 0.121 opt Au (LCM17). (resource = 5,288,800 tons @ 0.069 opt Au indicated) *M.J.*: July 3

Newmont Mining Corp. announced that it was fined \$500,000 by the Mine Safety and Health Administration (MSHA) for safety violations that led to the death of a miner at the Midas Mine in 2007. *M.J.*: July 10

Great Basin Gold Corp. announced that based on recent drill results at the Hollister Project, resources aggregate 1,111,000 tons @ 1.172 opt Au, 8.63 opt Ag measured+indicated and 1,033,100 tons @ 1.346 opt Au, 2.73 opt Ag inferred. (was 1,100,000 tons @ 0.917 opt Au, 5.58 opt Ag measured; 440,000 tons @ 0.766 opt Au, 2.34 opt Ag indicated and 1,210,000 tons @ 0.510 opt Au, 1.44 opt Ag inferred) *N.M.*: June 29

SilverCorp Metals Inc. announced that it terminated its offer to acquire Klondex Mines Ltd. (resource @ Fire Creek = 1,760,000 tons @ 0.582 opt Au indicated) *Press Release*: July 21

Christopher James Gold Corp. announced that it acquired an option to earn a 51% interest in the Highland Property from Fortune River Resource Corp. for \$4,000,000 in exploration expenditures over 6 years. *Press Release*: July 14

Christopher James Gold Corp. announced that it acquired an option to earn a 51% interest in the Buz Property from Fortune River Resource Corp. for \$2,000,000 in exploration expenditures over 6 years. *Press Release*: July 22

Fronteer Development Group Ltd. announced that it acquired an option to earn a 70% interest in the Richmond Summit Property from Redstar Gold Corp. for \$250,000 cash and \$3,250,000 in exploration expenditures over 4 years. *Press Release*: July 22

Gold Summit Corp. announced that it acquired an option to earn a 100% interest in the Sugarloaf Peak/Tip Top Property from Parker Mining Co. for \$40,000 cash and \$525,000 in exploration expenditures over 4 years. (resource = 625,000 tons @ 0.108 opt Au inferred) *Press Release*: July 10

Newmont Mining Corp. announced that it acquired an option to earn a 100% interest in the Hole In The Wall Property from Nevada Eagle Resources Co. for \$25,000/year payments. *Press Release*: July 9

Molycor Gold Corp. announced that based on recent drill results at the Tami-Mosi Project, resources aggregate 259,800,000 tons @ 10.0% Mg inferred. (no previous estimate) *Press Release*: July 7

Nevada Copper Corp. announced that based on recent drill results at the Pumpkin Hollow Project, resources aggregate 488,230,000 tons @ 0.58% Cu measured+indicated. (was 41,800,000 tons @ 0.88% Cu measured and 208,340,000 tons @ 0.73% Indicated) *Press Release*: July 15

Nevada Sunrise Gold Corp. announced that it terminated its agreement with Kinsley Resources Inc. regarding the sale of the Kinsley Mountain Property since Kinsley failed to make their regular scheduled cash payments. (resource = 1,975,000 tons @ 0.033 opt Au inferred) *Press Release*: July 8

US Gold Corp. announced that based on recent drill results at the Limousine Butte Project, resources aggregate 6,500,000 tons @ 0.026 opt Au measured; 4,100,000 tons @ 0.018 opt Au indicated and 2,500,000 tons @ 0.020 opt Au inferred. (was 38,796,000 tons @ 0.016 opt Au inferred) *Press Release*: July 15

Western Uranium Corp. announced that recent drill results at the Kings Valley Project include 32-35 meters @ 0.010 opt Au (ALB-05); 10.7-32 meters @ 0.004 opt Au (ALB-06); 137.2-141.8 meters @ 0.009 opt Au (ALB-08) and 265.2-312.5 meters @ 0.006 opt Au (ALB-10). *Press Release*: July 21

Queenstake Resources USA Inc. announced that it now has completed the installation of all ductwork at the Jerritt Canyon mill complex. Start-up of full operations will require a consent decree from the Nevada Department of Environmental Protection, possibly to be available in August. *Press Release*: July 17

Paramount Gold + Silver Corp. announced that it offered to acquire Klondex Mines Ltd. through a 1.45 share Paramount/1.0 share Klondex exchange basis. (resource @ Fire Creek = 1,760,000 tons @ 0.582 opt Au indicated) *Press Release*: July 20

Note for Members receiving hard copies of the Newsletter by mail:

In 2008-2009, there were approximately 90 members that received the GSN Newsletter by regular mail. Due to the increasing costs of printing, the presort mail service and postage, the cost to members receiving the Newsletter by mail will be increased from \$60 to \$70 per year. Receiving the Newsletter by e-mail has the added benefit of receiving the Newsletter more quickly than by mail and the Newsletter can be easily archived on your computer. It is also easy to print out hard copies using Adobe Reader®. If you currently receive the Newsletter by regular mail, please consider switching to e-mail.

Thank you,
Dave Emmons
GSN Membership Chair

Thank You GSN Volunteers!

The GSN is so lucky to have awesome volunteers! We had 20 people show up to move over 23,000 pounds of Symposium books from their former storage units into the new digs at the Nevada Bureau of Mines and Geology's Great Basin Science Sample and Records Library at The Desert Research Institute Campus. Special thanks go to Bret Pecoraro from NBMG, who operated the "order picker" and stacked every GSN volume by hand up on the storage racks! We also want to thank AMERICAN ASSAY LABS for loaning us their flatbed truck for two days. That really helped cut down the number of pickups we needed and saved us a lot of gas driving back and forth. One more company to mention is HARRIS EXPLORATION DRILLING & Associates, Inc. (Patrick Harris) who sent us two of his hardest working employees over to help. Thanks Mary and Jay! Ken Brook of Desert Ventures couldn't help in person but he helped us with his checkbook by paying for the forklift rental – thanks Ken! Last and most importantly, we want to thank the NEVADA BUREAU OF MINES AND GEOLOGY for their generosity of donating the warehouse space to store all of the GSN books in one location. In addition they have donated office space for the GSN and the GSN 2010 Symposium, and another storage cage area upstairs for GSN to put their field trip supplies, file cabinets, and a lot of other stuff in. Thanks to all of the NBMG employees who have graciously helped GSN make the transition to their new home and make it FEEL like home.

This was a HUGE job and with the help of so many cheerful GSN volunteers, it went quickly and smoothly without anyone's back getting thrown out! Guaranteed there are some sore backs among the helpers, but they can all be proud that it was for a good cause!

Volunteers for GSN Book Move:

Steve Carroll
Michael Cartwright
Peter Clarke
Bob Kastelic
D.D. LaPointe
Rich Loring
Holly McLachlan

Helen McLachlan
Marilyn Miller
Bret Pecoraro
Mike Ressel
Vic Ridgley
Eric Ruud
Alex Ruud

Laura Ruud
Erica Ruud
Dave Shaddrick
Rene' VonBoeck
Mary Honour, Harris Drilling
Jay Hazlett, Harris Drilling

Volunteers for the GSN Cage Build & Moving Items into the cage:

Michal Cartwright
Karl Frost
Ron Hess
Holly McLachlan
Vic Ridgley
Denny Sestanovich
Colin Spence

GSN Newsletter Monthly Advertising Rates

Business Card Size (3 ¹ / ₂ x 2")	\$50.00
Quarter page (3 ¹ / ₂ x 4 ³ / ₄ ")	150.00
Half Page (4 ³ / ₄ x 7 ¹ / ₂ ")	300.00
Classified ads (per line) (up to business card size)	10.00

For an advertising form, call the GSN office at 775-323-3500, fax 323-3599, email gsn@gsnv.org, or download the form from the GSN website:

<http://www.gsnv.org/membership.html>

Digital or text ads must be received by the 20th of the month to appear in the following month's newsletter.

There will be a 10% discount on all orders for 10-months or more.

2010 GSN DIRECTORY

We are taking orders for the 2010 GSN Membership Directory Gold Pages. Download the order form from the GSN website:

<http://www.gsnv.org/membership.html>

Upcoming Events

**Sept. 14
Monday**

The Northern Nevada Chapter of SME will be holding their monthly dinner and talk starting at 6:00 PM at Circus-Circus. The following is the speaker and topic for the meeting:

Author, Brandon MacDougall "Waste Dump Reserves – New Potential for Historic Waste"
Many of the surface mines that made their fortunes during the precious metals boom of the 1980's are now past their prime and scaling back or shutting down altogether. In many cases improvement in technology and mining methods has driven cut off grades to new lows among these mines. Lower cutoff grades coupled with increase precious metals prices have turned historic waste dumps into potential ore stock piles. Drawing from a waste dump study conducted at the Coeur Rochester mine, the presentation will discuss the potential within the waste dumps, as well as the methods used to accurately determine the contained ounces without physically sampling the dumps.

Email neville.rhoden@gmail.com for reservation.

Members \$22
Non Members \$25

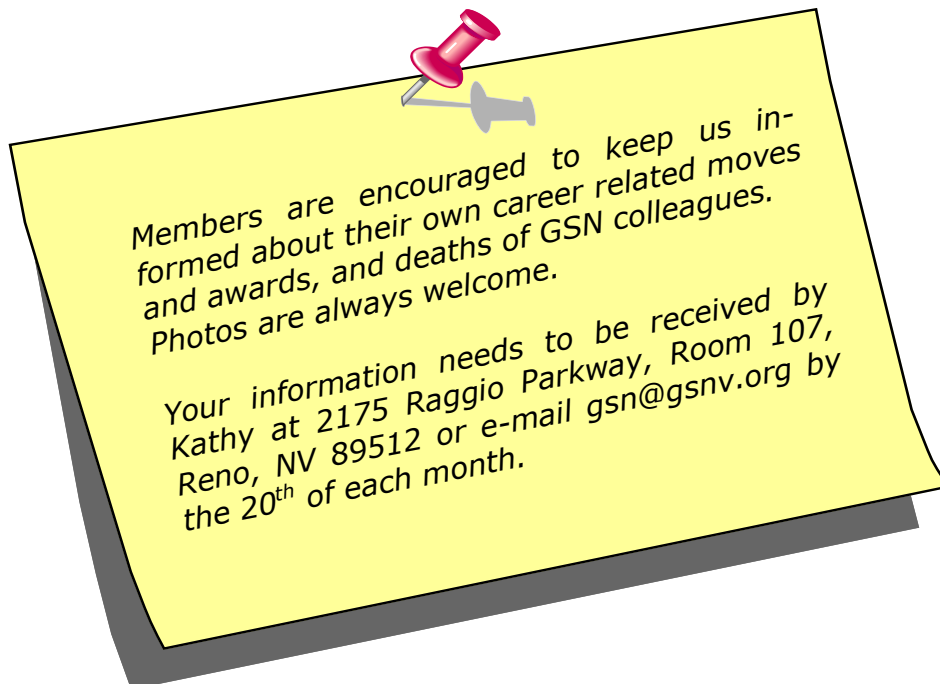
Social Hour at 6PM
Dinner starts at 7PM
Technical Talk at 8PM

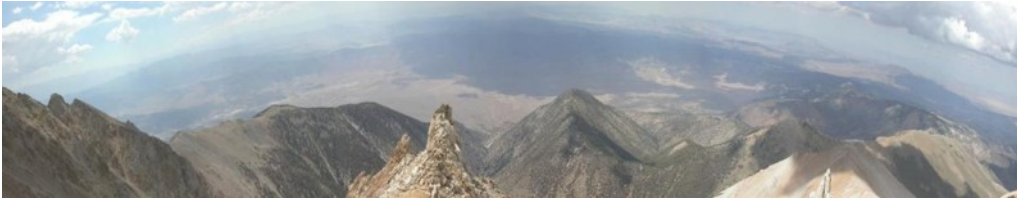
**Nov. 6-8
Fri-Sun**

GSN Fall Field Trip

Featuring **Underground Tour of the Leeville Carlin-Type Au Deposit**

Additional information including a complete itinerary will be in the October Newsletter and distributed by email when it is available. Space will be limited.





Geological Society of Nevada 2010 Symposium

May 14 - 22

John Ascuaga's Nugget - Reno-Sparks, NV

The Geological Society of Nevada invites you to attend our sixth symposium, Great Basin Evolution and Metallogeny. We strive to maintain a tradition of excellence, emphasizing descriptive accounts of ore deposits, new theories on deposit formation and innovative concepts of how to find the next district or deposit.

3 days of Technical Sessions

9 Field Trips

6 Short Courses

SEG GOLD WORKSHOP

Poster Presentations/Core Shack

Publication Volumes

Exhibit Hall

Contact Us:

2175 Raggio Parkway, Room 205

Reno, NV 89512

(775) 846-9766

secretary@gsnv.org

www.gsnv.org/symposium

For Further Information:

exhibits@gsnv.org

technicalsessions@gsnv.org

fieldtrips@gsnv.org

shortcourses@gsnv.org

postersessions@gsnv.org

fundraising@gsnv.org

Co-Hosts:



PRO1
Automotive
 "Discover the Personalized Touch in Automotive Repair"

QUICK LUBE LANE **AAA Approved Auto Repair** **SMOG CHECK GAS & DIESEL**

COMPLETE AUTO REPAIR
FOREIGN & DOMESTIC
 AUTOS • TRUCKS • 4-WHEEL DRIVES • GAS & DIESEL

945 TERMINAL WAY, RENO 89502
 OFF MILL STREET
775-856-4434
 www.pro1automotive.com

WE PROUDLY SUPPORT NEVADA MINING!
 Ricky Stebbins has been taking care of geologists vehicles since 1986 & understands the need for reliable vehicles on the road and in the field.

Big Sky Geophysics

Clark Jorgensen, M.Sc.
 Geophysicist

*Field Work
 Processing
 Interpretations*

P.O. Box 353 Phone/Fax +1 (406) 587-6330
 Bozeman, Montana 59771 Mobile +1 (406) 580-9718
 USA clark@bigskygeo.com

For more details, my background, and case studies, visit my webpage at www.bigskygeo.com

Magee Geophysical Services LLC

465 Leventina Canyon Road
 Reno, Nevada 89523 USA
 P (775) 742-8037
 F (775) 345-1715
 chris_magee@gravityandmag.com
 www.gravityandmag.com

Christopher Magee
 Consulting Geophysicist

ALS Laboratory Group
 ANALYTICAL CHEMISTRY & TESTING SERVICES

ALS Minerals



The world's leading supplier of analytical and assay services for the exploration and mining industries.

U.S.A. Locations
 Reno, NV (775 356 5395)
 Elko, NV (775 738 2054)
 Winnemucca, NV (775 625 4192)
 Fairbanks, AK (907 452 2188)

We provide analysis for:

- Gold & Other Precious Metals
- Base Metals & Pathfinder Element Suites
- Uranium Exploration
- Concentrates & Industrial Minerals
- Acid Generation Potential
- Isotopes

Rapid Core Stop:

- Core Log & Cutting

Minerology Services

53 locations in 24 countries

Contact us to find out how we can save you time and allow you to use your data with greater confidence.

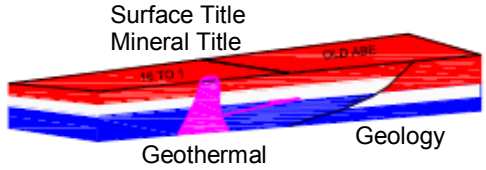
www.alschemex.com

*Right solutions....
Right partner*

G.I.S. Land Services

Greg Ekins M.S. R.P.L. #32306 President
 Mineral Landman - Commissioned Abstractor
 "From Courthouse Records to Final Map"

Due Diligence, Acquisition, Wind Energy
 Solar Energy, Geothermal Title, National
 Instrument (NI)43-101 Title Review



A professional firm of Landmen, Geologists, Draftsmen and Technicians
 Providing Abstracts of Title, Land Status and
 Exploration Geology Services
 Utilizing AutoCad - ArcMap - MapInfo - PowerPoint
www.gislandservices.com

241 Ridge Street, Suite 250
 Reno, NV 89501
 Ph: 775-746-8803 Fax: 775-746-8802
 Email: greg@gislandservices.com

New Address

North American Exploration

Providing service to the Mining industry since 1964



With over 45 years of experience,
we will complete any exploration project,
Anytime! Anywhere!



801-544-3421
North American Exploration, Inc.
447 North 300 West, Suite #3
Kaysville, Utah 84037
Email: nae@nae-xploration.com



At Timberline Drilling, Inc. we have a fleet of drills to meet every need. We specialize in both underground and surface core drilling in support of active mining operations, mine development projects and exploration.

Timberline Drilling, Inc. - Corporate
Martin Lanphere: 208.755.1938
mlanphere@timberline-drilling.com

Timberline Drilling, Inc. - Mexico Operations
Paul Elloway: 52.662.151.0426
pelloway@wwemexico.net

Timberline Resources Corp.
Randy Hardy: 208.664.4859
hardy@timberline-resources.com

Visit Us At:
www.timberline-drilling.com
for detailed information on all of our available drill rigs.

Conn Davis

775-831-7539



CLD SURVEYING

Surveyor & Expert Witness

Mining Claims Property Boundaries
Water Rights Drill Holes, Etc.

Mailing Address:
P. O. Box 7316
Incline Village, NV 89452

Licensed in:
California
Nevada
Idaho

Exploration & Mining Analytical Services



INSPECTORATE

INSPECTORATE AMERICA CORP.

605 BOXINGTON WAY, SUITE 101
SPARKS, NV 89434-8929

Phone: 775.359.6311 * Fax: 775.359.2944
<http://www.inspectorate.com>

Carmen Arbizo-Business Development Mgr
Carmen.Arbizo@Inspectorate.com
Mobile: 775.219.8657

Robert Wasiliew-General Mgr
Robert.Wasiliew@Inspectorate.com
Mobile: 775.741.0015

Dave Williams-Vice President
Dave.Williams@Inspectorate.com
Mobile: 775.848.8025

Chuck Whipple-Quality Assurance/Client Service Mgr
Chuck.Whipple@Inspectorate.com
Mobile: 775.830.4242

MINIMIZING RISK EVERY DAY
ISO 9001:2000 Certificate #30406



Leaders in Deep Exploration

Global Geophysical Services

Surveys: IP/Resistivity,
EM, Gravity, MT, TEM, CSAMT,
Magnetics

Consulting: 2D & 3D Inversion,
Project Design, Modelling

Deep Earth Imaging Technology



Minesite Imaging: Exploration,
Delineation, Condemnation

www.QuantecGeoscience.com 1.775.827.2611

Canada • USA • Botswana • Peru • Chile • Argentina • Australia



**ENVIRONMENTAL SERVICES
FOR THE MINING INDUSTRY**

environmental consultants, inc.

- Baseline Studies
- Environmental Permitting
- Monitoring & Compliance
- Reclamation & Closure Plans
- Investigation & Remediation

**Elko Location
775-738-8766**

www.jbrenv.com Reno and Salt Lake City locations

Jo Beth Allen
Professional Graphics

*CAD Drafting/Geologic Data Maps
Digitizing/Presentation Graphics
PowerPoint/Plotting/Printing
Geologist*

1055 Joshua Drive Phone: 775-324-7960
Reno, Nevada 89509 Fax: 775-324-7583
jobeth@yellowsb.net



A subsidiary of:



www.orbitgarant.com

RC Drilling, Core Drilling Surface & Underground
Contractors License # 59509

6120 Pedroli Lane Tel 403-652-5530
Winnemucca N.V. 89445 Fax 403-652-5578
Email infodriftdrilling@platinum.ca

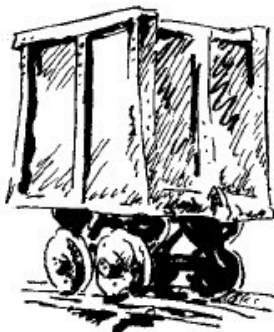


Fire Assay, ICP-OES/MS,
XRF, LECO, Custom Prep,

Chris Ioannakis, Managing Director, Analytical Services

Corporate Office 1500 Glendale Avenue Sparks, NV USA 89431-5902 Telephone: (775) 356-0606 Fax: (775) 356-1413	Elko Office 2320 Last Chance Road Elko, NV USA 89801-4852 Telephone/Fax : (775) 738-9100
--	--

E-mail: AALADMIN@aallabs.com
Website: www.aallabs.com



HARD ROCK WHEELS, INC.
4WD Pickup Rentals

Howard J. Adams 14756 Pine Knolls Lane Reno, Nevada 89521 (775) 852-2622 Fax (775) 852-2075 hardrockwheels@yahoo.com	Taiga Ventures 2700 S. Cushman St. Fairbanks, Alaska 99701 (907) 452-6631
---	--



**Carlin Trend Mining
Supplies & Service**

www.carlintrend.com

369 5th St., Elko, NV 89801
(775) 778-0668, Fax: (775) 778-0687, carlintrend@frontiernet.net

Geological Consulting - Claim Staking - Soil Sampling
Geology & Drafting Supplies - AutoCad & GIS
Temporary Employees In All Fields



Sketch by Larry Jacox



John Doucette Tramp Geologist

International experience in exploration and mining

- Geology and ore deposit mapping
- Core and cutting logging
- Computer assisted mapping
- Petrography - Geochemistry - GIS - GPS
- Database construction and analysis
- Core photography - rock density measurements
- Project management

Have Hammer Will Travel

doucettj@gmail.com

T&T EXPLORATION LLC

CLAIM STAKING SAMPLING MAPPING GPS

KIP TONKING
GEOLOGIST



P.O. Box 6945
Incline Village, NV 89452

Phone: (775) 831-3471
Cell: (775) 750-3663
Fax: (775) 831-3471
Res: (775) 831-3470
ktonking@msn.com



DIVERSIFIED DRILLING, LLC



*Providing Drilling Services To The
Mining/Metals Industry Since 1980*

3650 Grant Creek Road
Missoula, Montana 59808
Phone: (406) 542-1010 Fax: (406) 542-5065
www.diversifieddrilling.com

RENT A PIMA!!

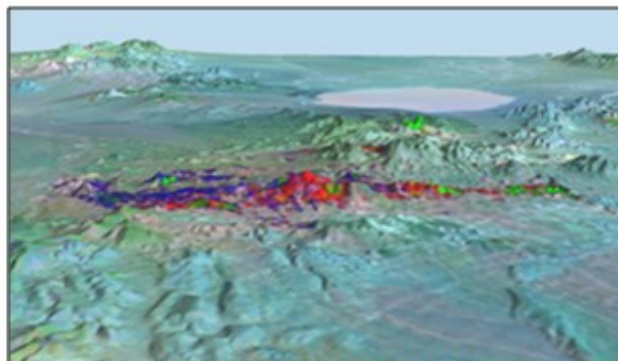


**IDENTIFY and MAP ALTERATION
MINERALS IN THE FIELD and CORE**

CONTACT US FOR Rentals and Services

Spectral International, Inc
303 403 8383 pusa@rmi.net
www.specmin.com

EXPLORATION with ASTER



Alteration Image, Goldfield, Nevada

- CUSTOM CORRECTED DATA
- ALTERATION IMAGERY
- EXTENSIVE GLOBAL ARCHIVES

WWW.ASTERIMAGES.COM
email: pusa@rmi.net
dwc@overhill-imaging.com

GEOLOGICAL SOCIETY OF NEVADA



gsn@gsnv.org • www.gsnv.org
 Telephone (775) 323-3500 Fax (775) 323-3599
 2175 Raggio Parkway, Room 107
 Reno, NV 89512
 USA

NON PROFIT
 ORGANIZATION
 U.S. POSTAGE
 PAID
 RENO, NV
 PERMIT NO. 931

PAID ADVERTISEMENTS

Barranca Diamond Core Saws and Blades

BD-2000 Series Wet Cutting Core Saws

These precision built saws are designed for rapid and accurate sawing of exploratory core specimens. The integral core holder provides for rapid and safe cutting of cylindrical core samples. Adjustable height cutting head accommodates specimen sizes between 1" and 5" in diameter. Available with gas (part# 026301) or electric (part# 02630) motor.



BD-62Q

For wet cutting of quartz, volcanic rock and marble



BD-62P

For wet cutting of porphyry granite and other hard materials



BD-2003E

BD Made in the USA

14" Segmented Rim Blades

Blade	Diameter	Width	Arbor	Part#
BD-62P	14" (356mm)	.095	1"	02556A
BD-62Q	14" (356mm)	.125	1"	02556



988 Packer Way, Sparks, NV 89431
 Phone: (775) 786-3003 | Fax: (775) 786-3813 | www.Lmine.com