

# GEOLOGICAL SOCIETY OF NEVADA NEWSLETTER

Geological Society of Nevada, 2175 Raggio Parkway, Room 107, Reno, NV 89512  
(775) 323-3500 - Hours Monday -- Friday, 8 a.m. to 4 p.m.  
Website: [www.gsnv.org](http://www.gsnv.org) • E-mail: [gsn@gsnv.org](mailto:gsn@gsnv.org)



September 2012, Vol. 28, No. 7

Published monthly except June and July

## CALENDAR OF GSN EVENTS

### PRESIDENT

**Dave Emmons**  
Kinross Gold USA, Inc.  
[demmons@sbcglobal.net](mailto:demmons@sbcglobal.net)

### VICE PRESIDENT

**Tommy Thompson**  
University of Nevada, Reno-Mackay  
[thompsonstommyt@aol.com](mailto:thompsonstommyt@aol.com)

### SECRETARY

**John Hoskins**  
[cbtr63@sbcglobal.net](mailto:cbtr63@sbcglobal.net)

### TREASURER

**Bob Kastelic**  
Consulting Geologist  
[bob\\_kastelic@yahoo.com](mailto:bob_kastelic@yahoo.com)

### MEMBERSHIP CHAIR

**Carmen Arbizo**  
Inspectorate America Corp.  
[carmen.arbizo@inspectorate.com](mailto:carmen.arbizo@inspectorate.com)

### PUBLICATION CHAIR

**Keith Fowlow**  
Kinross Gold USA, Inc.  
[Keith.Fowlow@kinross.com](mailto:Keith.Fowlow@kinross.com)

### OFFICE MANAGER

**Laura Ruud**  
[gsn@gsnv.org](mailto:gsn@gsnv.org)

**Sept 12, 2012  
Wednesday**

### WINNEMUCCA CHAPTER (*Every 2nd Wednesday of the month*)

The monthly meeting will be held at the Martin Hotel, 94 West Railroad St. Drinks @ 6 PM, Appetizers @ 6:30 PM, Talk @ 7:00 PM. Speaker: Amer Smailbegovic, Exploration Consultant; Title: "Prospecting in the Balkans (When everything else fails, just follow the Romans)" Abstract on pg. 6. **Sponsor is REDCOR DRILLING, INC.** For more information contact Leann Giese at [leann.giese@newmont.com](mailto:leann.giese@newmont.com).

**Sept 20, 2012  
Thursday**

### ELKO CHAPTER SUMMER BBQ (Third Thursday of the month)

The monthly BBQ will be held at the Duncan Little Creek Gallery Bar Backyard, 518 Commercial St. BBQ begins at 6:00 p.m. **BBQ & Drink Sponsor is ENVIROSCIENTISTS, INC.** For more info. contact Jared Townsend at [jtowndsend@barrick.com](mailto:jtowndsend@barrick.com).

**Sept 21, 2012  
Friday**

### GSN MEMBERSHIP MEETING (*Every 3rd Friday of the month*)

The monthly meeting will be held at the Reno Elks Lodge, 597 Kumle Lane, Reno. Drinks at 6:00 PM, Dinner at 7:00 PM, Talk at 8:00 PM. **SPEAKER:** Adam Simon, University of Michigan. **Sponsor for the evening is: BOART LONGYEAR.** Dinner reservations must be made by NOON Thurs., Sept 20th. Call Laura Ruud at (775) 323-3500; or email: [gsn@gsnv.org](mailto:gsn@gsnv.org). **\$18/each**

**No Meeting in  
September**

### SOUTHERN NEVADA CHAPTER (*Every Last Thursday of the month*)

The Southern Nevada Chapter will be meeting in early October jointly with the AEG. Speaker will be Jim Faulds, NBMG Director and new Nevada State Geologist. Date, Time and Place will be available in the October newsletter. For more information contact R. Paul Bowen, 702-247-7765.

**Oct 5-7, 2012  
Details &  
price coming  
soon!**

**GSN FALL FIELD TRIP**—VP Tommy Thompson is planning a great trip that will involve a Day 1 hike over the Buckskin (Natl District in the Santa Rosa Range) hydrothermal system from sinter down to the productive Au-Ag epithermal vein system. Day 2 will include looking at core from Western Lithium's deposit and additional outcrops of the McDermitt caldera complex.

**It's Time to Renew Your Dues for 2013!!**

Online: [www.gsnv.org/membershipform.php](http://www.gsnv.org/membershipform.php) or see form on page 11.

### GSN BOARD OF DIRECTORS

**Chairman**  
David Shadrack

**GSN President**  
Dave Emmons, Current

**Most Recent Past GSN President**  
Bill Howald

**Elko Chapter President**  
Jared Townsend

**So. Nevada Chapter President**  
Paul Bowen

**Winnemucca Chapter President**  
Leann Giese

**Class A, 2012-2015**  
Lynne Volpi  
Randy Vance

**Class B, 2010-2013**  
David Caldwell  
Marcus Johnston

**Class C, 2011-2014**  
David Shadrack (Chairman)  
Camille Prenn



## GSN SEPTEMBER MEETING SPONSOR



Drilling Services

**Alan Frank, Business Development**

**Darrell Tweidt, Business Development**

Boart Longyear Company  
[www.boartlongyear.com](http://www.boartlongyear.com) · [marty.dennis@boartlongyear.com](mailto:marty.dennis@boartlongyear.com)  
605 Union Pacific Way  
PO Box 2748, Elko, NV 89803  
Main: 775-738-1980 · Mobile: 775-934-7768  
Fax: 775-753-9229

**FROM THE PRESIDENT**  
**David Emmons, G.S.N. President 2012—2013**

Dear GSN Members,

Welcome to September and a new year of GSN meetings, dinners and presentations. I hope that all of you had a great summer of work and maybe even an enjoyable and relaxing vacation to some exotic place.

Our first speaker for the 2012-2013 year is Adam Simon. His presentation will be on the magmatic-hydrothermal model for Carlin-type gold deposits. His coauthors are John Muntean and Jean Cline. The talk will cover some of continuing debates over the origin of sediment-hosted gold deposits. It will be an informative update on some of the new research that has been made on these significant gold deposits. The abstract is in this newsletter.

Planning has started for the 2015 GSN Symposium. The theme of the meeting is "Geological Society of Nevada Symposium 2015: New Concepts and Discoveries." The symposium will be in May 2015 at the Nugget in Sparks. Eric Ruud is heading up the initial planning for the meetings and will be looking for volunteers. There are lots of opportunities to volunteer for the symposium. The 2010 symposium and volume of papers were a great success.

Carmen Arbizu, Membership Chair, will be starting the drive for new members and renewal of membership for GSN. There will be membership forms available at the September meeting. Laura Ruud is always happy to get new and renewal membership by phone, mail or over the GSN website. The current membership is about 1,300. The Executive Committee has set a goal of 1,400 members for 2013. To meet this goal we will need your help in inviting colleagues and friends to join or renew their membership.

Tommy Thompson, GSN Vice President, is planning the fall field trip. It will be in September or more likely October. Announcements will be sent to the members as the details are worked out.

I recently came across an announcement of a new edition of the book "**Atlas of Alteration: A field and petrographic guide to hydrothermal alteration minerals.**" The May 2012 issue is an updated and revised version of the 1996 release. The book is edited by AJB Thompson and JFH Thompson and published by the Geological Association of Canada (GAC). The GAC member price is \$44.00 and \$80.00 retail. It is likely that many geologists will want to add this volume to their library.

Many Nevada geologists work alone in the field. If you are one, you should consider buying a Spot satellite GPS messenger. These are great safety devices if you are stranded in the field and need help. Some are no larger than a Brunton compass. They can send an email message if you have an emergency in the field. The cost of the device is about \$100 to \$200. Think about getting one for some peace of mind in the field.

Another quote to end my column: "***The faintest ink is better than the best memory.***" By an unknown Chinese author.

Signing off for now – see you at the September GSN Meeting.



---

# *GSN September 21, 2012 Membership Meeting*

---

## **Reservations Are Required - Please Cancel if You Are Unable to Attend**

GSN CAN NO LONGER GUARANTEE DINNER SEATING WITHOUT ADVANCE RESERVATIONS.  
Please call 775-323-3500, Fax 775-323-3599 or e-mail [gsn@gsnv.org](mailto:gsn@gsnv.org) by **NOON on Thursday, Sept. 20, 2012.**

Social Hour: 6:00 PM – Dinner: 7:00 PM – Speaker: 8:00 PM

**\$18.00 per person—Note new price for September!!**

Location: Elks Lodge, 597 Kumle Lane, Reno, NV

Directions: across (W) from the Reno-Sparks Convention Center  
(S. Virginia Street, behind the Les Schwab Tire Center)

## **A magmatic-hydrothermal model for Carlin-type gold deposits**

Adam Simon: University of Michigan

John Muntean: University of Nevada Reno

Jean Cline: University of Nevada Las Vegas

Geologists continue to debate the origin of Carlin-type gold deposits. Several geologically plausible hypotheses have been proposed ranging from magmatic-hydrothermal, to metamorphic, to connate, to deeply circulating meteoric fluid. In this talk, I will present new and published data that are consistent with a magmatic-hydrothermal model for the origin of CTGDs. These data include: 1) a spatial and temporal association between CTGDs and magmatism, both within individual deposits and at mid-crustal levels; 2) high-resolution electron microprobe traverses of ore-stage pyrite that demonstrate the nearly ubiquitous presence of a suite of magmatically-incompatible trace elements (As-Hg-Tl-Te-Sb) in gold-rich pyrite growth zones; 3) partitioning data from experiments and natural fluid inclusions that demonstrate the ability of magmatic aqueous fluid(s) to scavenge Au and incompatible trace elements (As-Hg-Tl-Te-Sb) and transport them into the upper crust; 4) the presence of ~0% sulfur isotope values in ore stage, gold-bearing pyrite growth zones; and, 5) O and H isotope data in ore-stage fluid inclusions that are consistent with magmatic aqueous fluid. The formative model involves: 1) degassing of the Farallon ocean plate and hydration of the overlying mantle wedge and sub-continental lithospheric mantle (SCLM); 2) the ascent of early aqueous fluids with a low Au/Cu ratio, resulting in restite having a high Au/Cu ratio and enrichment of the SCLM in As-Hg-Tl-Te-Sb; 3) flattening of the slab followed by slab detachment resulting in asthenospheric upwelling and the generation of large-scale basaltic magma at the base of the SCLM; 4) mixing, assimilation and homogenization of asthenospheric magma with the base of the crust; 5) ascent of this hydrous, fertile, Au-rich magma along deep faults that were reactivated during Basin and Range extension; 6) ponding of Au-rich, As-Hg-Tl-Te-Sb-bearing magmas at depths of ~10 km, consistent with gravity and resistivity studies; 7) degassing of the silicate melt and evolution and ascent of Au-rich, As-Hg-Tl-Te-Sb-bearing aqueous fluid; 8) vapor contraction, brine condensation and loss of Fe from the ascending aqueous fluid; 9) acidification of the aqueous fluid owing to dissociation of carbonic acid resulting in permeability enhancement of carbonate host rocks; 10) assimilation of downwelling meteoric fluid resulting in mixed H-, O- and S-isotope signatures in many deposits; 11) sulfidation of iron in the carbonate host rocks and concomitant reaction with S in the aqueous fluid to precipitate pyrite, destabilizing Au-chloride and Au-sulfide complexes and precipitating gold along with As-Hg-Tl-Te-Sb; and 12) continued ingress of meteoric water resulting in precipitation of post-ore orpiment, realgar, and stibnite. The geologically plausible model is consistent with all salient characteristics of CTGDs.

# “FACES OF GSN”

## Jim Leavitt

I was born on the craton in Illinois, raised on the leading edge in California, schooled and worked in Oregon, Alaska, Montana, Idaho, Wyoming, Arizona, New Mexico, Nevada, Mexico, Taiwan, Saudi Arabia, Jordan, Peru, Canada, China, and back to Nevada. Of all the places I have lived and worked, Nevada is arguably the best.



Jim sampling a jasperoid in Nevada

I received my BS from the University of California at Santa Barbara (Go Gouchos) and MS from the University of Oregon (Go Ducks). It was at Oregon that I met the amazing Ellie Davie, soon to be Ellie Leavitt. After finishing our masters work in volcanology we adventured and worked in the various places listed above, sometimes together, sometimes apart. We became fully invested in minerals exploration as our careers and as our way of life. Along the way we raised three awesome kids and managed to get them through college (hallelujah or transliterated from Arabic, alhumdalullah, or plain English, God be praised).

I am very proud of my children. I am especially proud of Ellie for putting up with me for the past 34 years and raising the kids with a little help from me. Time flies by when you are having fun. Work-wise I had long stints with Noranda, and Homestake, shorter gigs with the US Geological Survey, Ma’aden (The Saudi Arabian Mining Company), Geologix, US Gold, Agnico-Eagle, Rare Element Resources, back to Agnico-Eagle, plus an assortment of consulting jobs.

Exploration success has been varied, but I had my best luck in Saudi Arabia. With the USGS I examined the ancient workings at Ad Duwayhi in 1994. With the help of USGS and Ma’aden personnel the resource is over 2 million ounces of gold. Now if they could just find enough water for processing. My early work on the Tawilah-Monsourah mineral belt and suture zone in 2001 led Ma’aden personnel to discover + 4 million ounces gold at Monsourah from 2003 to present.



Jim Leavitt & Family at the ranch

I have made extraordinary friends from around the world and here in Nevada. The GSN has been an integral part of both professional development and friendships.

Long live the GSN and all of us!

# GSN FOUNDATION

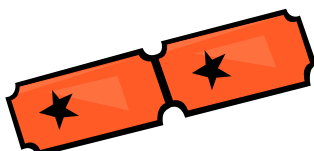
## THANK YOU GSN GOLFERS AND INSPECTORATE AMERICA CORP.

At the recent GSN Golf tournament the purchase of mulligans and raffle tickets raised a little over \$1,800 for the Foundation. Thank you golfers for contributing to the Foundation, and thank you Inspectorate for hosting the event and supporting the Foundation.

At our spring Foundation Board meeting a FY2012-2013 budget of \$28,500 was approved to fund the K-12 School Field Trip program, UNR Scholarship contributions, UNR Field Camp Scholarships, and continual support of the NBMG mapping programs. We are also assisting the Elko Chapter with their scholarship program at Great Basin College. In previous years the Elko Chapter has collected funds from their membership for scholarships for area students attending Great Basin College. Going forward the Foundation will add \$1,000 to the funds raised by the Elko Chapter thereby increasing scholarship support for students studying Earth Sciences at GBC.

The GSN membership can be proud of the Foundation that they have built. Our programs are reaching many who are learning about Earth Sciences and finding careers in geology and related fields.

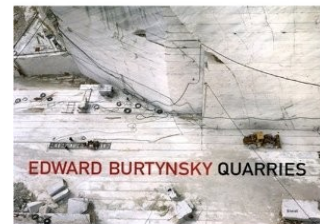
Roger Steininger, Foundation Chair



## GSN SECRETARY'S CORNER: by John Hoskins

Book Review: "Edward Burtynsky - Quarries"  
ISBN 978-3-86521-456-0

Wondering what to put on your Christmas Wish List? Consider this coffee-table size (14-1/2" x 12") book of spectacular photographs of marble and granite quarries around the world (Vermont, Spain, Italy, India and China). Burtynsky is a Canadian photographer of landscape transformed by industry. The Nevada Museum of Art in Reno is currently (through September 23) showing his "OIL" series of oil field, refinery and down-stream large-scale pictures. The "Quarries" book is on sale at the museum gift shop - \$88.00 (\$79.20 with 10% member discount; \$55.76 on Amazon.com). My favorite photograph in the book is at page 139, showing what can be done with small left-over granite blocks: carve potbellied pigs, of course!



*Thank you to our  
generous donors in August*

### G.S.N. FOUNDATION

#### **PLATINUM LEVEL DONORS \$1,000+**

Richard Bedell  
W.L. Wison

#### **SILVER LEVEL DONORS \$100-\$499**

Don Jennings  
Pamela Klessig  
A. Dan Rovig  
Roger Steininger

#### **BRONZE LEVEL DONORS \$1-\$99**

Suama Bolden  
Byron Ingels  
Peg O'Malley  
Winthrop Rowe

### STUDENT DINNER FUND

Richard Bedell  
Suama Bolden  
Erin Gray  
Byron Ingels  
Peg O'Malley  
A. Dan Rovig  
Kathy Sestanovich  
Roger Steininger

### STUDENT FIELD TRIP FUND

Richard Bedell  
Suama Bolden  
William Burstow  
Byron Ingels  
Peg O'Malley

# **G.S.N. WINNEMUCCA CHAPTER MEETING**

## **WEDNESDAY, SEPTEMBER 12, 2012**

**Location:** The Martin Hotel, 94 West Railroad Street

**Time:** Refreshments @ 6:00 p.m.; Appetizers Served @ 6:30 p.m.; Talk @ 7:00 p.m.

**Presenter:** Amer Smailbegovic, Ph.D., CPG, Exploration Geologist/Geophysicist

**Abstract:** Prospecting in the Balkans (When everything else fails, just follow the Romans)

The Balkan Peninsula, situated in Europe's southeastern corner has been explored and exploited for mineral resources since the times ancient, with the first reported organized mining activity carried by the Phoenicians around 800 BCE. However, it was the Roman empire that initiated systematical exploitation of gold, silver, copper, iron and lead deposits in Bosnia and Herzegovina, Serbia, Kosovo, Albania, Bulgaria and Romania. During the modern times (last 100 years), Southeastern Europe was reliant on its mineral resources to enable rapid industrialization in the post-war booms, but the planned economy of socialist era and the violent break-up of Yugoslavia in the 1990s have left the mineral sector in shambles. Recently, the region is experiencing a renewed exploration interest, but there are numerous "management opportunities" to address along the way: poor infrastructure, shortage of creative thinking, availability of historical data, landmines and unexploded ordinance coupled with a stiff legal framework of European Union mining regulations (in EU member countries).

The presentation outlines some of the geologic settings in which various types of mineralization are hosted in select localities in the Balkan Peninsula. Various structural and lithologic conditions will be presented along with the long exploration history and directions for future work and interest. Additionally, some of the exploration strategies will be given on prospecting the areas where a limited amount of data is available or the region is risky to work in (e.g. landmines). Lastly a brief overview will be given on the directions of EU's mineral resource and environmental policy and how recent economic crises may lead to re-examination of those policies.

About the presenter:

Amer Smailbegovic is an exploration consultant, residing in Reno, NV but with the roots, and ridiculously-long surname from the Balkans. He has earned his Ph.D. in Geophysics (2002) from the Mackay School of Mines, University of Nevada, Reno and has been working internationally, in the minerals industry for the past decade, specializing in combining various geophysical, geochemical and geospatial datasets to help streamline and economize exploration efforts.

**Sponsored by:**



**G.S.N. ELKO CHAPTER BBQ**  
**(the Calendar says it's still Summer!)**

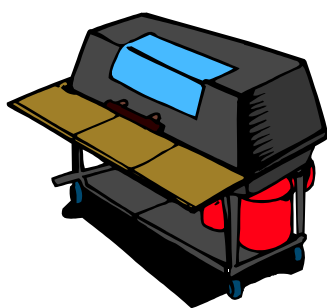
**Thursday, September 20, 2012**

**6:00 p.m.—9:00 p.m.**

**Duncan Little Creek Gallery Bar Backyard**

**518 Commercial Street**

**BBQ & Drink Sponsor is ENVIROSCIENTISTS, INC.**



**Enviroscientists, Inc.**  
Reno, Nevada Office: Ph (775) 826-8822 Fax: (775) 826-8857  
Elko, Nevada Office: Ph (775) 753 9496 Fax: (775) 753 9499

**Notices, Plans of Operations,  
Cost Estimates, TRI, Biological Surveys,  
Air Quality Permits & Audits**

Info@enviroincus.com www.enviroincus.com



**NEVADA GEOLOGY CALENDAR – *coming soon!***

**Nevada Geology Calendar 2013**, designed by Jack Hursh and Jennifer Mauldin

13 x 9.5 inches, **\$10.00**

This 15-month calendar (October 2012 through December 2013) features a different geologic topic each month: Paleontology, Geologic Mapping, Volcanic Flows, Sandstone, Geothermal, Historic Mining, Tilting Geology, Geodesy, Structural Geology, Flash Floods, Evaporites & Evaporates, Ash-Flow Tuff, Earthquakes & Faults, Modern Mining, and Ancient Lakes.

A limited supply will be printed, but you can **reserve your calendar(s) now:**

<http://www.nbmng.unr.edu/sales/pbsdtls.php?sku=CAL2013>

Calendars will be available for pick up or shipping **by early September.**

Buy 10 or more calendars, and you will receive a **41% or greater discount.**

**Discount Schedule for the General Public:**

[http://www.nbmng.unr.edu/sales/discount\\_schedule\\_general\\_public.pdf](http://www.nbmng.unr.edu/sales/discount_schedule_general_public.pdf)

These would make wonderful holiday gifts for your friends or clients.



# Activity Update

Mike Brady, July 2012

[www.activityupdate.com](http://www.activityupdate.com)

## NEVADA

International Minerals Corp. announced that based on the results of a recently completed feasibility study of the Gemfield Project, reserves aggregate 14,300,000 tonnes @ 1.1 gpt Au proven+probable. (was 8,636,000 tonnes @ 1.36 gpt Au inferred) *Press Release: July 17*

Scorpio Gold Corp.(70%) announced that recent drill results at the Mineral Ridge Project include 62.5-68.6 meters @ 3.15 gpt Au (MR12396); 51.83-59.45 meters @ 2.92 gpt Au (MR12397); 45.73-50.3 meters @ 0.56 gpt Au (MR12399) and 30.49-32.01 meters @ 0.89 gpt Au (MR12400). (resource = 4,230,000 tonnes @ 1.47 gpt Au indicated) *Press Release: July 9*

Rye Patch Gold Corp. announced that recent drill results at the Rochester/LH Project include 0-190.5 meters @ 50.3 gpt Ag, 0.14 gpt Au (RMR-042); 33.5-143.3 meters @ 4.9 gpt Ag, 0.02 gpt Au (RMR-044); 112.8-114.3 meters @ 0.3 gpt Ag, 0.11 gpt Au (RMR-046) and 51.8-108.2 meters @ 4.6 gpt Ag, 0.01 gpt Au (RMR-049). *Press Release: July 10*

Premier Gold Mines Ltd. announced that recent drill results at the Cove/Helen Project include 601.98-621.79 meters @ 23.48 gpt Au (AX-8); 537.97-550.16 meters @ 14.42 gpt Au (AX-9) and 607.16-610.52 meters @ 15.66 gpt Au (AX-10C). (resource = 356,000 tonnes @ 20.14 gpt Au, 41 gpt Ag inferred) *Press Release: June 28*

Pilot Gold Inc.(51%) announced that recent drill results at the Kinsley Mountain Project include 113.1-122.8 meters @ 0.88 gpt Au (PK09C); 86.3-93.3 meters @ 0.66 gpt Au (PK10C); 94.5-114.9 meters @ 5.48 gpt Au (PK14C) and 126.6-137.2 meters @ 1.40 gpt Au (PK19C). (resource = 1,795,000 tonnes @ 1.13 gpt Au inferred) *Press Release: July 16*

Nevada Copper Corp. announced that recent drill results at the Pumpkin Hollow/North Project include 278.9-341.1 meters @ 1.01% Cu, 0.12 gpt Au (NC12-14); 293.7-335.1 meters @ 0.34% Cu, 0.06 gpt Au (NC12-15); 217.9-224.0 meters @ 0.27% Cu, 0.01 gpt Au (NC12-16) and 344.4-445.0 meters @ 0.35% Cu, 0.04 gpt Au (NC12-17). (reserve (all) = 134,900,000 tonnes @ 0.50% Cu, 0.10 gpt Au proven+probable open pit) *Press Release: July 10*

International Enxco Ltd. announced that recent drill results at the Contact Project include 104.5-136.6 meters @ 0.33% Cu (EN164); 121.3-133.5 meters @ 0.26% Cu (EN165); 59.1-84.7 meters @ 0.23% Cu (EN168) and 37.2-98.1 meters @ 0.21% Cu (EN169). (resource = 122,900,000 tonnes @ 0.26% Cu measured+indicated) *Press Release: July 18*

Renaissance Gold Inc. announced that recent drill results at the Trinity Project include 7.28-51.0 meters @ 21.46 gpt Ag (A12-13); 5.46-27.3 meters @ 22.1 gpt Ag (A12-14); 7.28-16.38 meters @ 28 gpt Ag (A12-15) and 3.64-18.2 meters @ 61 gpt Ag (A12-17). (resource = 1,728,000 tonnes @ 46.7 gpt Ag inferred oxide) *Press Release: July 11*

Evolving Gold Corp. announced that recent drill results at the Carlin Project include 897.9-917.4 meters @ 11.76 gpt Au (CAR-016.1); 630.9-634.0 meters @ 0.51 gpt Au (CAR-017) and 715.8-723.9 meters @ 1.08 gpt Au (CAR-018). *Press Release: July 11*

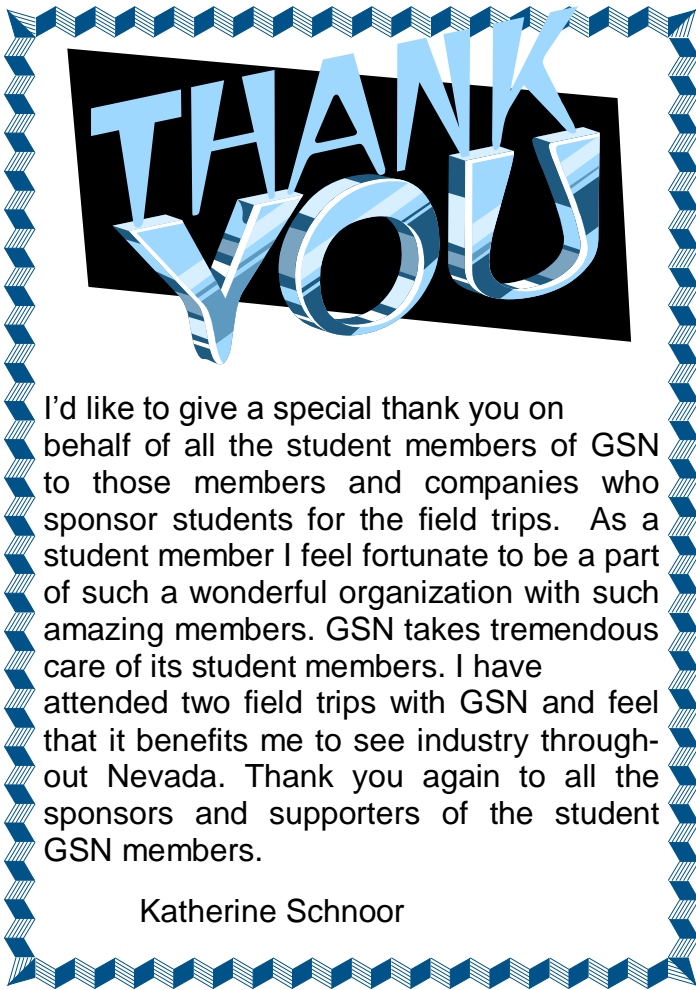
Atna Resources Ltd. announced that based on recent studies at the Reward Project, reserves aggregate 10,756,000 tonnes @ 0.75 gpt Au proven+probable. (was 16,379,000 tonnes @ 0.69 gpt Au measured+indicated) *Press Release: July 9*

Atna Resources Ltd. announced that it has now completed the construction of a secondary access at the Pinson underground project. (resource = 2,654,000 tonnes @ 12.56 gpt Au measured+indicated) *Press Release: July 25*

Newmont Mining Corp. announced that reserves at the Carlin Open Pit Mine aggregate 301,550,000 tonnes @ 1.30 gpt Au proven+probable. (was 239,540,000 tonnes @ 1.47 gpt Au proven+probable) *2011 Annual Report*

Newmont Mining Corp. announced that reserves at the Carlin Underground Mine aggregate 16,364,000 tonnes @ 9.62 gpt Au proven+probable. (was 13,273,000 tonnes @ 10.48 gpt Au proven+probable) *2011 Annual Report*





I'd like to give a special thank you on behalf of all the student members of GSN to those members and companies who sponsor students for the field trips. As a student member I feel fortunate to be a part of such a wonderful organization with such amazing members. GSN takes tremendous care of its student members. I have attended two field trips with GSN and feel that it benefits me to see industry throughout Nevada. Thank you again to all the sponsors and supporters of the student GSN members.

Katherine Schnoor



September 2012 Section Meeting

Monday, September 10, 2012

Please RSVP by Noon, WEDNESDAY, September 5, 2012

Send RSVP to Kaitlin Sweet

775-225-6147 or [KCSweet@enviroincus.com](mailto:KCSweet@enviroincus.com)

Happy Hour 6, Dinner 6:45 & Talk at 7:30 PM

**Circus-Circus Mandalay Room**

**Mackay students enjoy free admission & dinner**

Our Meeting Sponsor: Cashman Equipment



"Systems Based Management at Comstock Mining Inc."

Corrado De Gasperis, Comstock Mining Inc.

Director, President & CEO

## Upcoming Events



NEVADA MINERAL EXPLORATION COALITION

*The "Voice" of Nevada Exploration*

P.O. Box 1734  
Elko, NV 89803  
[www.nvmec.org](http://www.nvmec.org)

**Join Us!**

### Nevada Mineral Exploration Coalition

Annual General Meeting 2012

Date: October 1, 2012

8:00 AM - 7:00 PM  
(Registration Opens at 7:00 AM)

Atlantis Casino and Resort - Reno, NV

Registration Costs:

Early  
(through Sept. 10):  
Member: \$40  
Non-Member \$60

Regular  
(Sept. 11 - Sept. 24)  
Member: \$65  
Non-Member \$85

Late and at Door  
(Sept. 25 - Oct. 1)  
Member: \$100  
Non-Member \$120

## Nevada Petroleum & Geothermal Society

**Dinner Meeting:**

**Thursday, September 6, 2012**

**Ramada Reno Hotel; 6:30 PM**  
**1000 East 6th Street, Reno, NV 89512**

**Speaker: Jerry Walker, Geologist, Reno, NV**

**Title: Oil Exploration & Production in Nevada; a snapshot**

*Cocktail Reception 6:30, Skyline Bar, 14th Floor*

*Dinner Served at 7:00 PM*

**NPS Members \$20; Non-Members \$23; Students \$10**

**\*\*RSVP by Tue Sep 4 to Judy Kareck (775) 827-6111 or**

**[jkareck@lumosenengineering.com](mailto:jkareck@lumosenengineering.com)**

## Fun at the Elko Chapter's & Winnemucca Chapter's BBQs in August, 2012

The G.S.N. is so lucky to have another great group of officers who have stepped up to volunteer their time to run the Chapters of this organization for FY2012-2013. On August 10, 2012 the Winnemucca Chapter officers organized a BBQ in the park that included a wonderful catered BBQ dinner, games and kegs of Great Basin beer, sponsored AND delivered by ALS Minerals. It was a beautiful evening and everyone had fun meeting new people and catching up with old friends. I counted about 80 people in attendance and oddly enough there were a bunch of geos from Wisconsin!

On August 16, 2012 the Elko Chapter continued with the "fun in the sun" at their monthly BBQ at the Duncan Little Creek Gallery Bar. ALS Minerals also sponsored the food and drink for this gathering. The ALS crew grilled a ton of carne asada and brats themselves and provided homemade salads and sides. There was a little bit of rain to cool things off and half the crowd stayed right where they were enjoying every drop that fell. One note of interest ....The GSN signed up their 1300th member (and 1301st!) for the first time ever at the Elko BBQ! Go GSN!



Leann Giese's niece says "Gimme an lcky!" at the Winnemucca Chapter's August 10th BBQ in the Park



Winnemucca Officers for 2012-2013 are (l to r): Randy Vance (Treasurer), Leann Giese (President), Mike Beyer (VP), and Peter O'Byrne (Secretary)



GSN Members Carl Pescio and Dave Mathewson "talking mining" at the GSN Elko Chapter BBQ



A little downpour couldn't dampen the spirits of GSN Elko Chapter's new Membership Chair, Anna Perry

**Thank you to ALS MINERALS  
for sponsoring the  
Elko and Winnemucca Chapter  
BBQs in August!**



The GSN Membership drive begins this month! Renew online: <http://www.gsnv.org/membershipform.php>  
 or fill out the Renewal form below and send it to the GSN office.

# GEOLOGICAL SOCIETY OF NEVADA

# 2013

2175 Raggio Parkway, Room 107, Reno, NV 89512 USA

Phone (775) 323-3500 • Fax (775) 323-3599 • [gsn@gsnv.org](mailto:gsn@gsnv.org) • [www.gsnv.org](http://www.gsnv.org)

Offices are located at NBMG's Great Basin Science Sample & Records Library at The Desert Research Institute  
 Office hours: 8 AM - 3:00 PM, Monday through Friday

The Geological Society of Nevada (GSN) is a non-profit, educational organization whose principal objective is to promote the advancement of geological sciences, especially as they relate to Nevada. GSN supports the dissemination of information through meetings, field trips, publications and academic endeavors. Membership is open to geologists, geophysicists, geochemists, engineers, educators, students, prospectors or anyone else with an interest in the geological sciences and/or the goals of the GSN.

The membership year begins on January 1. Annual dues of \$50.00 (\$25.00 for full time students) are due prior to December 31. The GSN conducts a Field Trip in the Fall and one in the Spring of each year. Monthly meetings are held in Reno, Winnemucca, and Las Vegas (Southern Nevada Chapter) September through May. The Elko Chapter holds meetings January through December.

Please help support the GSN Foundation when renewing. Foundation dollars are used for the Kindergarten through 12th grade Field Trip Grant Program, Nevada Mapping Grants and University of Nevada scholarships.

**MEMBERSHIP APPLICATION**     Renewal     New    Date: \_\_\_\_\_

Name: \_\_\_\_\_ Position/Title: \_\_\_\_\_

**Everything is the same as before, except as indicated below.**

Consultant:  Company Name: \_\_\_\_\_

Student:  University: \_\_\_\_\_

Address: \_\_\_\_\_

City: \_\_\_\_\_ State/Province: \_\_\_\_\_ Zip Code: \_\_\_\_\_

Country: \_\_\_\_\_ Website: \_\_\_\_\_

Telephone) **Work:** \_\_\_\_\_ **Fax:** \_\_\_\_\_

Numbers ) **Cell:** \_\_\_\_\_ **Residence:** \_\_\_\_\_

(Your residence telephone number will not be listed in the Directory)

**E-Mail:** \_\_\_\_\_

**Email address is required for Emailed Newsletter**

- I would like to have an asterisk by my name in the directory indicating I am available for consulting.
- I have met the licensing requirements and want "QP" (Qualified Person) by my name in the directory.

I authorize GSN to send to me, via email: GSN announcements, publications updates, employment opportunities, etc.

Yes  No

**Optional Chapter Affiliation** (to be eligible for chapter voting and emails from those Chapter Officers)

- Elko Chapter     Southern Nevada Chapter     Winnemucca Chapter

Regular Membership Dues 2013 - Email newsletter \$50.00 (**International & Domestic**)     Honorary \_\_\_\_\_

Regular Membership Dues 2013 - Hardcopy newsletter via postal service \$70.00 (**Domestic Only**)     Honorary \_\_\_\_\_

Student Membership Dues 2013 - email newsletter only \$25.00 (Nevada students are sponsored by Geotemps, Inc.) \_\_\_\_\_

**Donations:** \_\_\_\_\_  I wish to donate to the **GSN Student Dinner Fund** \_\_\_\_\_

(Foundation Donated Funds will be used for unrestricted grants and scholarships unless otherwise specified below)  I wish to donate to the **GSN Student Field Trip Fund** \_\_\_\_\_

I wish to donate to the **GSN Foundation** \_\_\_\_\_

**TOTAL:** \_\_\_\_\_

Payment Type: Check # \_\_\_\_\_  Cash     Visa     Master Card     Discover

Card Number: \_\_\_\_\_ Exp. Date: \_\_\_\_\_ 3-digit security code: \_\_\_\_\_

Signature (as it appears on card): \_\_\_\_\_

Return with payment to: Geological Society of Nevada,  
 2175 Raggio Parkway #107, Reno, NV 89512  
 Fax to 775/323-3599, E-mail [gsn@gsnv.org](mailto:gsn@gsnv.org)

# WHERE IN NEVADA??

## SEPTEMBER CONTEST

1. Where is it ?
2. What is it ?
3. How was it formed ?

Send your entries to Laura Ruud no later than Thursday, September 20, 2012. All entries must be accompanied by your own suggested mystery geology photo taken somewhere in Nevada. The winning entry will be selected at random from among all the correct entries who also submitted a photo and a fabulous prize will be awarded.

Answer to August's "Where in Nevada ?" contest:

Clancy Wendt was the winning entrant for the August contest. He correctly identified August's Mystery Photo. "The picture is the Boss Mine. The host rock of the deposit is the basal part of a Tertiary andesite which overlies a Tertiary rhyolite. these volcanic rocks overlie the Ordovician Palmetto Formation.,It is located between Hawthorne and Tonopah."

Clancy has submitted this photo for September's contest:



Don't forget that you MUST submit your own "Where in Nevada" photo along with your answers to be eligible!!

## PAID ADVERTISEMENTS



**Industrial Imaging Co.**

**3D AMT Data Acquisition  
3D MT Inversion  
3D Imaging & Visualization**

*[www.industrialimaging.com](http://www.industrialimaging.com)*

**Specializing in Pediment Exploration**



### Corporate Office

Chris Ioannakis, Managing Director, Analytical Services

1500 Glendale Avenue  
Sparks, NV USA 89431-5902  
Telephone: (775) 356-0606  
Fax: (775) 356-1413

Fire Assay, ICP-OES/MS,  
XRF, LECO, Custom Prep,  
BLEG

### Elko Office

2320 Last Chance Road  
Elko, NV USA 89801-4852  
Telephone/Fax : (775) 738-9100

E-mail: [AALADMIN@aallabs.com](mailto:AALADMIN@aallabs.com)  
Website: [www.aallabs.com](http://www.aallabs.com)

# HARRIS EXPLORATION

DRILLING & ASSOCIATES, Inc



Office-  
243 Escondido Blvd., PMB 336 Escondido, Ca 92025

Shop-  
19 Sheckler Cutoff Fallon, Nevada 89406

PH: 760-741-8890 FAX: 760-741-8891

## RESERVE A DRILL, CALL TODAY!

[www.harrisexploration.com](http://www.harrisexploration.com)



*Serving Mining in Nevada Since 1992*

General Engineering Contractor  
Drill Pads  
Road Building  
Reclamation  
Earthwork

Office: 775-753-5832  
Mobile: 775-778-1681  
Mobile: 775-934-1315  
[www.legarza.com](http://www.legarza.com)

NV License #35480  
CA License #804120

## North American Exploration

Providing service to the Mining industry since 1964



With over 45 years of experience,  
we will complete any exploration project,  
Anytime! Anywhere!



### 801-544-3421

North American Exploration, Inc.  
447 North 300 West, Suite #3  
Kaysville, Utah 84037  
Email: [nae@nae-exploration.com](mailto:nae@nae-exploration.com)



### Carlin Trend Mining Supplies & Service

www.carlinrendminingservices.com

369 5th St., Elko, NV 89801  
(775) 778-0668, Fax: (775) 778-0687, carlintrend@frontiernet.net

Geological Consulting - Claim Staking - Soil Sampling  
Geology & Drafting Supplies - AutoCad & GIS  
Temporary Employees In All Fields

### HARD ROCK WHEELS, INC. 4WD Pickup Rentals

Howard J. Adams  
14756 Pine Knolls Lane  
Reno, Nevada 89521  
(775) 85202622  
Fax (775) 852-2075

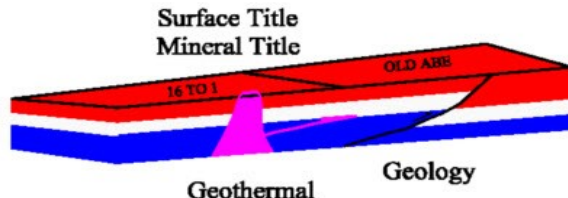
Taiga Ventures  
2700 S. Cushman St.  
Fairbanks, Alaska 99701  
(907) 452-6631

hardrockwheels@yahoo.com

### G.I.S. Land Services

Greg Ekins M.S. R.P.L. #32306 President  
Mineral Landman - Commissioned Abstractor  
"From Courthouse Records to Final Map"

Mineral Title, Geothermal Title,  
National Instrument (NI) 43-101 Title Review,  
Due Diligence  
3D AutoCad; ArcMap and MapInfo GIS



A professional firm of  
Landmen, Geologists, Draftsmen and Technicians  
Providing Abstracts of Title, Land Status and  
Exploration Geology Services  
Utilizing AutoCad - ArcMap - MapInfo - PowerPoint  
www.gislandservices.com

241 Ridge St., Suite 250  
Reno, NV 89501  
Ph: 775-746-8803 Fax: 775-746-8802  
email: greg@gislandservices.com



# NEW FRONTIER DRILLING

- SPECIALIZING IN REVERSE CIRCULATION DRILLING FOR THE MINERAL EXPLORATION AND MINING INDUSTRY
- TRACK-MOUNTED RIGS WITH SLIDING/ANGLE MASTS, SOME WITH TILTING DECKS & DOZER BLADES
- LOW ENVIRONMENTAL IMPACT WITH MINIMAL PAD SITE AND ROAD CONSTRUCTION REQUIRED
- RIGS ARE MATCHED WITH LONG TERM HIGHLY TRAINED CREWS ALONG WITH ALL-TERRAIN SUPPORT VEHICLES
- SAFETY PROGRAM WITH MSHA AND OSHA TRAINING

Brian Meyer | Cell: 402.430.6815 | Fax: 866.706.6657  
brian@newfrontierdrilling.com | www.newfrontierdrilling.com



## DIVERSIFIED DRILLING, LLC



*Providing Drilling Services To The Mining/Metals Industry Since 1980*

3650 Grant Creek Road  
Missoula, Montana 59808  
Phone: (406) 542-1010 Fax: (406) 542-5065  
[www.diversifieddrilling.com](http://www.diversifieddrilling.com)

## JBA WORKS, INC.

**Jo Beth Allen**  
Geologist

**Maps & Data  
Presentation Graphics**

CAD / GIS  
Slides / Illustrator & Photoshop / Plots

1055 Joshua Drive      [jobeth@jbaworks.com](mailto:jobeth@jbaworks.com)      Office: 775-324-7960  
Reno, Nevada 89509      Cell: 775-303-6818



**INSPECTORATE**

A Bureau Veritas Group Company



## INSPECTORATE AMERICA CORP.

**A Bureau Veritas Group Company**

605 BOXINGTON WAY, SUITE 101  
SPARKS, NV 89434  
Telephone: (775) 359-6311  
[www.inspectorate.com/ems](http://www.inspectorate.com/ems)

**Carmen Arbizo - Business Development Manager**  
Mobile: (775) 219-8657 \* Fax: (866) 633-3240  
[Carmen.Arbizo@Inspectorate.com](mailto:Carmen.Arbizo@Inspectorate.com)

**Chuck Whipple – Senior Account Manager**  
Mobile: (775) 830-4242 \* Fax: (866) 830-9482  
[Chuck.Whipple@Inspectorate.com](mailto:Chuck.Whipple@Inspectorate.com)

IAC for your analytical requirements!

MINIMIZING RISK EVERY DAY  
ISO 9001:2008 Certificate #30406

# RC Drilling

## Dual Tube Reverse Circulation

## Dual Tube Flooded Reverse

- Exploration
- Dewatering Wells
- Water Wells
- Directional Drilling
- Monitoring Wells
- Casing Advance

# MAJOR

*Partners on the Ground*



**Schramm T130**



**Schramm 685  
Truck-mounted**



**Schramm 450  
Track-mounted**

# MAJOR

*Partners on the Ground*

2200 South 4000 West  
 Salt Lake City, Utah 84120  
 801-974-0645  
 nguyen.do@majordrilling.com  
 www.majordrilling.com





The Global Leader in Analytical Data Service for the Mining Industry.

ClientServicesUSA@alsglobal.com  
1-775-356-5395



USA LOCATIONS

Elko | Reno | Winnemucca | Fairbanks | Anchorage

www.alsglobal.com

RIGHT SOLUTIONS RIGHT PARTNER



JOSEPH R. ANZMAN  
Exploration Geophysicist

- consulting
- interpretation
- project management
- geophysical surveys
- domestic & foreign

P.O. Box 370526  
Denver, Colorado 80237  
geophjoe@comcast.net

Office: 303-337-4559  
Cell: 303-519-0658

# Big Sky Geophysics

Clark Jorgensen, M.Sc.  
Geophysicist

*Field Work  
Processing  
Interpretations*

P.O. Box 353  
Bozeman, Montana 59771  
USA

Phone/Fax +1 (406) 587-6330  
Mobile +1 (406) 580-9718  
clark@bigskygeo.com

**For more details, my background, and case studies,  
visit my webpage at [www.bigskygeo.com](http://www.bigskygeo.com)**

Drift Exploration Drilling, Inc. a division of Orbit Garant Drilling Inc. is adding four Schramm 450's to our fleet and two will be available in Nevada in the next Month



For more information please contact Garth Patterson @403-601-4374 or garthp@platinum.ca

# GEOLOGICAL SOCIETY OF NEVADA



gsn@gsnv.org • www.gsnv.org  
Telephone (775) 323-3500  
Fax (775) 323-3599  
2175 Raggio Parkway, Room 107  
Reno, NV 89512 USA

## PAID ADVERTISEMENTS



## FIRE ASSAY IN ELKO

SGS in North America offers **FIRE ASSAY** analysis for gold and silver. Our **EXPERIENCED TEAM** is well versed in traditional fire assay techniques. We have significant furnace and instrument **CAPACITY** to ensure that large numbers of samples are processed quickly. We offer reliable quality and are committed to efficient **TURNAROUND** time.

SGS Minerals Services  
Elko, Nevada  
[robert.ducey@sgs.com](mailto:robert.ducey@sgs.com)  
435 503 5838  
[www.sgs.com/mining](http://www.sgs.com/mining)

**SGS IS THE WORLD'S LEADING INSPECTION, VERIFICATION, TESTING AND CERTIFICATION COMPANY**

WHEN YOU NEED TO BE SURE 