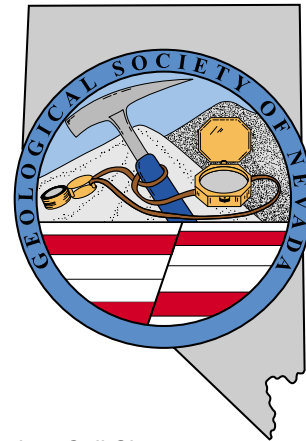


GSN NEWSLETTER



August 2004, Vol. 18, No. 6

PRESIDENT

Dieter Krewedl
Krewedl Mineral Exploration
dkrewedl@usamedia.tv

VICE PRESIDENT

Vic Ridgley
Contact GSN office

SECRETARY

Leslie Olmstead
Nevada Contact Inc.
lolmstead@nevadacontact.com

TREASURER

Camille Prens
Mine Development Associates
cami@mda.com

MEMBERSHIP CO-CHAIRS

Greg McN. French
Consulting Geologist
GMcNFrench@aol.com

Dave Shaddrick

Rubicon Resources Inc.
Dshaddrick@aol.com

PUBLICATION CO-CHAIRS

Elizabeth A. Zbinden
Round Mountain Gold Corp.
E_Zbinden@geology.reno.nv.us

Ruth Carraher

C&M Consultants
RACarraher@aol.com

OFFICE MANAGER

Shannon Fitzpatrick
gsn@mines.unr.edu

CALENDAR OF EVENTS

**Aug. 19th
Thursday**

DOUG SILVER TALK: How to Grab the Brass Ring: An Update on the World. See page 2 for more information. Call Shannon Fitzpatrick at 775/323-3500.

**Oct. 10th
Sunday**

GSN 16th ANNUAL PICNIC: Rancho San Rafael Park. Details on page 3. Call Shannon Fitzpatrick at 775/323-3500.

Oct. 1st-3rd

GSN FALL FIELD TRIP. The Cortez Hills and Archimedes areas. See details and sign up form in the September newsletter or call Shannon Fitzpatrick at 775/323-3500.

**Oct. 15th
Friday**

GSN MEMBERSHIP MEETING: Reno Elks Lodge, Reno, NV, Speaker and topic to be announced.

2005

May 15th-18th

GSN SYMPOSIUM 2005: "Window to the World." See page 2 for information and form for volunteers.

GSN Newsletter is published monthly except June and July

Geological Society of Nevada, PO Box 13375, Reno, NV 89507 USA, 775/323-3500, www.gsnv.org

FROM THE PRESIDENT

Dieter Krewedl, *GSN President 2004-2005*

As the GSN begins a new year, the mineral exploration business continues to be very positive based on the increased number of job opportunities and the elevated level of exploration activity in Nevada and elsewhere. In fact, the improved employment outlook has had a direct effect on the Executive Committee of the GSN. Gassaway Brown, who was elected GSN President for 2004-2005 during our May general meeting, in June accepted the position of Exploration Manager for Mexico with Hecla Mining based out of Durango. This meant Gass would not be able to perform the duties of GSN President and he has resigned his position. We all wish Gass the best of luck in his new job and thank him for his great service to the GSN as its Vice President and Secretary.

The GSN Executive Committee subsequently appointed me as your President for the new fiscal year beginning in June. Vic Ridgley came forward and accepted the position of Vice President. His appointment will be presented to the members at the October general meeting for approval.

I also want to thank Clancy Wendt for his terrific effort as President the past year. Clancy scheduled many exciting

talks that were informative and very well attended. Clancy also managed to do some arm-twisting and kept most of the GSN Executive Committee. We are lucky to have quality, enthusiastic people volunteering their time to the GSN.

The Fall Field Trip looks to be an exciting time. Vic Ridgley is still working out the logistics, but the Cortez Hills and Archimedes areas will be on the trip. Bob Hays has once again accepted the GSN's request for a tour and update. Ed Cope also agreed to update the GSN on Barrick's new activities. We are expecting a large turn out, so sign up early.

Apparently the Bureau of Land Management feels the need to change something new every year. Last year it was changing the claim form; this year it is changing the cost of claim maintenance and claim location fees. Please be sure to read all the changes, we don't want any claims going invalid.

Many events are coming up this summer and into the fall so mark your calendars. Doug Silver and the "Silver"

continued on page 2



News and Announcements

FROM THE PRESIDENT *continued from page 1*

Summer Series now referred to as S³ will be again held at the Carpenter Residence on August 19th. Come join the festivities and good conversation. Also on the schedule is the Mine Expo in Las Vegas scheduled for September 27-30. Come down to Lost Wages and enjoy the newest in industry wares. The Fall Field Trip is scheduled for the first weekend in October and the 16th Annual Picnic will be held at Rancho San Rafael Park on October 10th. I hope to see many of the members at these events. Also this is a good time to remind everyone to pay their 2004-2005 membership dues. The membership form is on page 6.

Unfortunately there is some very sad news to pass along. Four GSN members have passed away during the year—Vic Kral, Floyd (Stretch) Petersen, Lyle Taylor and Tom Thompson. Each of these individuals contributed differently to the industry, to geology and to the GSN, but each of them will be missed the same.

I hope to see many familiar faces at the meetings, as well as some new ones. With the busy schedules we all have, the monthly meetings are a great place to catch up. With that in mind, I am still finalizing the schedule of presenters for our monthly meetings, but expect many good presentations on current Nevada activities.

SILVER SUMMER SERIES (S³)

The GSN presents the 3rd Annual Silver Summer Series on August 19th. Doug Silver has once again been kind enough to accept an invitation to come talk about the world how he sees it. The talk is titled "How to Grab the Brass Ring: An Update on the World". The talk will be given at "La Hacienda de Carpenter" (Tom and Ann Carpenter's home), at 5445 Goldenrod Drive off the Mt Rose Highway from 5:30 to 9:00 pm. Eklund Drilling has graciously volunteered to sponsor all of the refreshments. Come and enjoy the evening, we hope to see you there. If you have any questions please call Shannon Fitzpatrick at the GSN office, 775/323-3500.

GSN GOLF TOURNAMENT RECAP

The annual GSN golf tournament was held on June 19 at Washoe County Golf Course. We had 38 golfers and 14 guests join us for a fun-filled summer day of golf, followed by a delicious Aunt Sticky's barbeque. Golf prizes and food were generously provided by **Eklund Drilling Company**, and Cami and Neil Prenn were kind enough to arrange a cold keg of beer donated by **Great Basin Brewing Company**. Results of the golf tournament were as follows:

First Place Team: Mark Reischmann, Valerie Ronchetto, Roger Steining & Bob Thomas

Second Place Team: Jon Brown, Dan Kappes & Mike Cassidy

Third Place Team: Mike Braun, Rene Von Boeck, Tom Mackowiak, & Dave Williams

Closest to Pin contest was won by Chris Ioannakis

Longest Drive contest was won by Tim Master & Judy Hall

Longest Putt contest was won by Greg Hill

After golf and dinner, we had a drawing, and all attendees went home with at least one of a variety of gifts. Thank you very much, Lance!

SYMPOSIUM 2005

The Editors are seeking experienced geoscientists willing to review full-length and short technical papers to be presented at the symposium either in plenary sessions or as poster displays. It is expected that over 50 long papers for two-peer review and at least 60 short papers for single review will be received. Volunteers are requested to complete the following form and send it by fax to the GSN office (775/323-3599) or Editors (775/746-4856), or by email (nevrhoden@aol.com, gnsymp@unr.edu).

The short time frame for reviews will be from September 2004 to January 2005, and referees will be asked to complete their reviews quickly by annotating hard copies and returning them to the Editors rapidly. Please refer to the web site (www.gsn2005.org) for more information about the subjects to be covered.

Name _____

Address _____

Town _____ State/Zip _____

Tel. _____ Cell _____

Fax _____ Email _____

Present employment/activity _____

Qualifications _____ Experience (years) _____

Expertise (ie. Great Basin, Carlin-type Au, massive sulfides, reviews, epithermal, geothermal, geochem., geophysics, remote sensing, age dating, structures/tectonics, Europe, Asia, Latin America, Africa, etc.)

1) _____

2) _____

3) _____

Signed _____ Date _____

Thanks to Enviroscientists, Inc. for hosting the May meeting.

GSN 16TH ANNUAL PICNIC

The GSN's 16th annual picnic is scheduled for Sunday, October 10, 2004 at Rancho San Rafael Park in the Highland Pavilion from 12 – 5 pm. Bring your spouse, kids or friends for an afternoon of food and fun, beer and games. The GSN Education Committee will provide the meat, snacks and beverages. We ask that you bring a side dish to share. The price is \$5 per person or \$10 per family. A sign-up form will be in the September newsletter.

Call Shannon Fitzpatrick at the GSN office, 775/323-3500, for further information or sign up.

TIN CUP TEA & CHUCK WAGON BBQ

Mark your calendars for the fifth annual **Tin Cup Tea & Chuck Wagon BBQ** to be held this year on September 11th, from 6 pm to 10 pm. Governor Kenny Guinn and First Lady Dema Guinn invite you to join them at the Governor's Mansion for this important event benefiting two of northern Nevada's important cultural institutions, the Nevada State Museum, Department of Cultural Affairs, and the W.M. Keck Earth Science and Mineral Engineering Museum at the Mackay School of Earth Sciences and Engineering, University of Nevada, Reno.

The event will feature tours of the Governor's Mansion, allowing guests the opportunity to view the Mackay Tiffany Silver, historic fashions, wagons & buggies, and Nevada mineral and fossil specimens. Come and enjoy a western BBQ provided by Boomtown Hotel & Casino, take pleasure in a variety of libations, bid in the silent auction, watch the Guns & Gals of old Virginia City, and dance to the music of the Comstock Cowboys, sponsored by Placer Dome America.

The cost is \$45 per person; for more information please contact Rachel Dolbier at the W.M. Keck Museum, 775/784-4528 or email rdolbier@unr.edu.

GEOLOGIC MAPPING MEETING

On Wednesday, August 11th from 1:30 to 3:30 pm there will be an Open Meeting of the Geologic Mapping Subcommittee of the State Mapping Advisory Committee. The meeting will be held in the Scruham Engineering Building, Room 401, UNR Campus. They will review the status of ongoing geologic mapping projects, review previously established priorities for new geologic quadrangle maps in Nevada, discuss and adjust priorities as needed and present new map to be proposed for State map grants. The meeting is open to the public and all those interested should attend.

For more information, or if you are unable to attend and would like to comment on geologic mapping needs in Nevada, please contact Jon Price, State Geologist and Director, Nevada Bureau of Mines and Geology (jprice@unr.edu).

CLAIM MAINTENANCE FEE UPDATE

As of June 30, 2004, mining claim and location fees were increased. The new fees go into effect for the 2004-2005 assessment year. Maintenance fees have increased from \$100 per claim to \$125 per claim. In order to comply with this new increase, you must pay your maintenance fees for 2004-2005 assessment year on or before September 1, 2004. The full language of this new ruling can be found on the BLM's Internet Home Page (www.blm.gov). This site can also be used to access the LR2000 claims database. Another claim search site has also come to the GSN's attention; it is the Nevada Sunrise site at www.nevadasunrise.com. They apparently have an easier way to access the LR2000 database that some of you may find easier.

Regarding the increased fees, it is worth pointing out that the United States has the 3rd highest claim holding fees in the world. Unfortunately, the claim increase only serves to make the United States more uncompetitive. Ten years ago, the United States had almost 20% of the worldwide exploration budget; today that budget has dropped to 7%.

The fees have gone up. Be sure to pay the appropriate amounts to avoid having your claims become invalid.

SPRING FIELD TRIP 2004 WRAP-UP

Our spring 2004 field trip was a rousing success (and what else would it be?) Twenty seven participants gathered for "Gold Deposits of the Independence Mountains, Elko Co., NV" on June 11-13. Friday, we converged upon Elko from Reno and all over GSN territory, with necessary post-drive libations at Elko's famous Salty Dog. Saturday, Ted Wilton headed up an enthusiastic crew of Queenstake - Jerritt Canyon geologists who guided us around several deposits - mined out, active, and under development - of the Jerritt Canyon District. Thank you to Ted and to Bill Josey, Phil Eberhard, Mike Jones, Bob Loring, Mike Ward, Art Small, and Bob Morell for taking time out of their day and leaving us informed about this district. Sunday, we proceeded to the next district north, Big Springs, where Stan Keith and Earl Abbott presented a progress report on their current remapping project. Earl's Wounded Knee outcrop was a big attraction. Don Merrick and Gateway Gold are making good progress toward defining a new resource to get the mine open again. The most energetic of the participants wrapped up the field trip with a steep uphill hike to Stan's "smoking gun" outcrop mafic dyke. It is a mafic dyke alright, but whether or not it is a smoking gun depends on your point of view. Five geologists, ten opinions, would you have it any other way?

We are grateful to Queenstake Resources and Gateway Gold for permission to visit their properties.

Many thanks to our sponsors. **ALS-Chemex, American Assay Labs, BSi-Inspectorate, Eklund Drilling, Carl Pescio, and Dave Shaddrick** all helped make sure we were neither hungry nor thirsty.

Thank you especially to Gassaway Brown who organized the trip.

2004–2005 GSN OFFICERS AND COMMITTEE CHAIRS

EXECUTIVE COMMITTEE

President

Dieter Krewedl
Krewedl Mineral Exploration

Vice President

Vic Ridgley
Contact GSN office

Secretary

Leslie Olmstead
Nevada Contact Inc.

Treasurer

Camille Prenn
Mine Development Associates

Membership Co-Chairs

Gregory McN. French
Consulting Geologist

Dave Shaddrick
Rubicon Resources Incorporated

Publication Co-Chairs

Elizabeth Zbinden
Round Mountain Gold Corp.

Ruth Carraher
C&M Consultants

WEB COMMITTEE

Website Chair

Mario Desilets
Nevada Bureau of Mines and Geology

EDUCATION COMMITTEE

Co-Chairs

Rachel Dolbier
W.M. Keck Museum, MSM

D.D. LaPointe
Nevada Bureau of Mines and Geology

ELKO CHAPTER

President

Dave Caldwell
Nevada Pacific Gold (U.S.), Inc.

Vice President

John Watson
Barrick Exploration

Treasurer

Steve Kulinski
Barrick Goldstrike Mines Inc.

Secretary

Stacy Saari
Newmont-Deep Post Mine

Membership Chair

Jay Olcott
Barrick Exploration

SOUTHERN NEVADA CHAPTER

President

Amy Brock
Student

Vice President

Robyn Howley
Geosciences Management Institute inc.

Secretary and Newsletter

Melissa Hicks
UNLV Research Associate

Treasurer

R. Paul Bowen
R.P. Bowen Engineering, Inc.

WINNEMUCCA CHAPTER

President

Charles McAllister
Newmont Mining Corporation

Vice President

Kim Craig
Getchell Gold

Treasurer

Randy Vance
Newmont Mining Corporation

Secretary

Fred Breit
Newmont Mining Corporation

MSHA

GSN would like to mention the completion of another successful MSHA one-day refresher course, thanks to trainer, Bill Collins. We had 28 people sign up for the July 7th class. Thanks to all of you who were patient with Shannon through the scheduling process. Look for announcements on future classes.

UPCOMING EVENTS

Aug. 11th – GEOLOGIC MAPPING MEETING: Reno, NV, Scrugham Engineering Building, 1:30pm to 3:30pm, Room 401, UNR Campus. The meeting is open to the public. For more information please contact Jon Price, State Geologist and Director, Nevada Bureau of Mines and Geology (jprice@unr.edu).

Sept. 27-30th – MINE EXPO INTERNATIONAL 2004: Las Vegas, NV. The world's largest and most comprehensive exposition for the mining industry. www.minexpo.com.

Oct. 10th – GSN 16th ANNUAL PICNIC: Rancho San Rafael Park in the Highland Pavilion from 12-5pm. The price is \$5 per person or \$10 per family. Call Shannon Fitzpatrick at the GSN office, 775/323-3500. See page 3.

2005

May 15th-18th – GSN SYMPOSIUM 2005: Window to the World. John Ascuaga's Nugget Hotel and Casino, Reno/Sparks, NV. Talks and forums, posters, core shacks, exhibits, short courses, field trips and social events. www.gsn2005.org or 775/323-4569.

MINERAL EXPLORATION SERVICES

SOIL SAMPLING
CLAIMSTAKING
PROPERTY EVALUATION
MINE HAZARD FENCING

5655 Riggins Ct., #15, Reno, NV 89502
Tel: (775) 954-1082 Fax: (775) 829-6882
email: day@mineralexploration.com

Jo Beth Allen Professional Graphics

CAD Drafting/Digitizing/Scanning
High Resolution Presentation Graphics
Plotting/Printing
Geologist

1055 Joshua Drive
Reno, Nevada 89509

Phone: 775-324-7960
Fax: 775-324-7583

jobeth@yellows.net

Fire Assay
ICP - OES
ICP - MS
AAS
Custom Preparation
Bullion Analyses
BLEG

Corporate Office
1500 Glendale Avenue
Sparks, NV U.S.A. 89431-5902
Telephone (775) 356-0606
Fax (775) 356-1413

Elko Office
2320 Last Chance Road
Elko, NV U.S.A. 89801-4852
Telephone/Fax (775) 738-9100

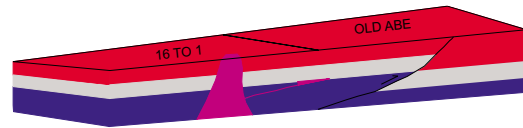
E-mail: AALADMIN@aallabs.net
Website: www.aallabs.com

**American
Assay &
Environmental
Laboratories**



G.I.S. Land Services

Greg Ekins M.S. R.L.P. #32306 President
Mineral Landman - Computer Draftsman
"From Courthouse Records to Final Map"



AutoCad - ArcView - Mapinfo
Geologic, GeoChem and Land Status Maps
www.gislandservices.com

E: greg@gislandservices.com
P: 775-746-8803 F: 775-746-8802

6635 Broadridge Ct.
Reno, NV 89523

WE CAN HELP!

- Environmental and exploration support services
- Celebrating 40 years of service to the mining industry
- Experience in Mexico / Canada / Alaska



NORTH AMERICAN EXPLORATION INC.
NORTH AMERICAN MINE SERVICES INC.
GEOLOGY | GEOPHYSICS | GEOCHEMISTRY
HYDROLOGY | ENVIRONMENTAL SERVICES

472 North Main • Kaysville, Utah 84037 • Phone (801) 546-6453 Fax (801) 546-0884
nae@nae-exploration.com



Carlin Trend Mining Supplies & Service

369 5th St., Elko, NV 89801
(775) 778-0668, Fax: (775) 778-0687, carlintrend@frontiernet.net

Geological Consulting - Claim Staking - Soil Sampling
Mineral Surveys - Mine Hazard Fencing
Geology & Drafting Supplies - AutoCad & GIS
Temporary Employees in All Fields



TUCSON AZ ♦ 85715
Tucson (520) 298-2725, FAX (520) 298-2767
Reno (775) 771-5356 ♦ www.darlingltd.com

ESA/NEPA
Permitting
Hazard Remediation
Biological Assessments

Claim Staking
3-D Laser Scanning
Surveying/Mapping
Geochemical Sampling

Geological Society of Nevada Symposium 2005 15-18 May 2005, Reno, Nevada (USA)

WINDOW TO THE WORLD

Talks & Posters
Core Shack
Vendor Exhibits

Short Courses & Seminars
Field Trips
Networking

Call for papers: We invite geoscientists worldwide to submit original papers for oral or poster presentation at the Symposium. Descriptive papers on recently discovered ore deposits are especially invited.

Geological Society of Nevada Symposium 2005, gsn symp@unr.edu
www.gsn2005.org, 775-323-4569, fax 775-323-3599
PO Box 13375, Reno, NV 89507-3375



GEOLOGICAL SOCIETY OF NEVADA

9/03

P.O. Box 13375, Reno, NV 89507 USA

Phone (775) 323-3500 • Fax (775) 323-3599 • gsn@mines.unr.edu • www.gsnv.org

The Geological Society of Nevada (GSN) is a non-profit, educational organization whose principal objective is to promote the advancement of geological sciences, especially as they relate to Nevada. GSN supports the dissemination of information through meetings, field trips, publications and academic endeavors. Membership is open to geologists, geophysicists, geochemists, engineers, educators, students, prospectors or anyone else with an interest in the geological sciences and/or the goals of the GSN.

The GSN membership year begins in September. Annual dues of \$30.00 (\$15.00 for full time students) are due in the fall. The GSN sponsors a Field Trip in the Fall and one in the Spring of each year. Monthly meetings are held on the third Friday of each month, October through May. No formal meetings are currently held during the summer field season. The following are sanctioned Chapters of the Geological Society of Nevada: Elko Chapter, based in Elko; Southern Nevada Chapter, based in Las Vegas, and the Winnemucca Chapter, based in Winnemucca. Additional dues to these Chapters are \$5.00 annually.

Please remember the GSN Foundation when renewing. Foundation dollars are used for the Kindergarten through 12th grade Field Trip Grant Program, Nevada Mapping Grants and University of Nevada scholarships.

GEOLOGICAL SOCIETY OF NEVADA MEMBERSHIP APPLICATION/RENEWAL

DATE _____

NAME: _____ POSITION/TITLE _____

CONSULTANT COMPANY NAME: _____

STUDENT UNIVERSITY: _____

ADDRESS: _____

CITY: _____ STATE/PROVINCE: _____

ZIP: _____ COUNTRY: _____

PHONE: WORK _____ FAX _____

CELL _____ RESIDENCE _____

E-MAIL: _____ WEB SITE: _____

WOULD YOU LIKE TO HAVE AN ASTERISK BY YOUR NAME IN THE DIRECTORY INDICATING YOU ARE AVAILABLE FOR CONSULTING?

I authorize GSN to send to me, via email: GSN announcements, publication updates, employment opportunities, etc.

Yes
No

Regular Membership Dues - email newsletter \$30.00 Honorary \$ _____

Regular Membership Dues - hardcopy newsletter via postal service \$35.00 Honorary _____

International Membership Dues - email newsletter only \$30.00 _____

International Membership Dues - hardcopy newsletter via postal service \$45.00 _____

Student Membership Dues - email newsletter only \$15.00 _____

ADDITIONAL DUES

I wish to be a member of the Elko Chapter \$5.00 _____

I wish to be a member of the Southern Nevada Chapter \$5.00 _____

I wish to be a member of the Winnemucca Chapter \$5.00 _____

GSN FOUNDATION

I wish to donate to the GSN Foundation

(Donated funds will be used for unrestricted grants and scholarships unless otherwise specified _____.)

TOTAL DUE \$ _____

Payment: Check # _____ Cash Visa MC Card # _____

Exp. Date _____ Signature (as it appears on card) _____

**Return with payment to: Geological Society of Nevada, P.O. Box 13375, Reno, NV 89507
Fax to 775/323-3599, email gsn@mines.unr.edu**

In Memory

Lyle Taylor

Lyle Taylor, President and CEO of Geotemps, Inc, died Friday, June 18, 2004, in a single-car accident while en route from northern California to his home in Reno. Throughout most of his adult life, Mr. Taylor was involved in the mining industry, and his dedication to mining in Nevada and throughout the West was routinely demonstrated through extensive sponsorships and support. Mr. Taylor served as the current President of the Northwest Mining Association, as well as having been awarded a lifetime membership to that organization. He was a member of the Mackay School of Earth Sciences Executive Advisory Board at The University of Nevada, Reno. He was an avid supporter of the Nevada Mining Association, the Colorado Mining Association, and the American Mining Association, as well as a variety of additional industry associations and community organizations. Mr. Taylor was also recently awarded a lifetime membership to The Geological Society of Nevada. His passion for the mining industry is evidenced by the energy he has expended on its behalf throughout his long and distinguished career.

Mr. Taylor was the founder, president and CEO of Geotemps, Inc., from 1984 to the present. Geotemps, Inc. provides temporary staffing and direct placement services to the mining industry. Mr. Taylor was a Veteran of the United States Air Force, a past president of the American Legion, a graduate of the University of Nevada, Reno, a graduate of White Pine High School in Ely, Nevada, and a former President of the White Pine Chamber of Commerce in Ely, Nevada. His many interests included the outdoors, playing golf, and the company of valued friends and family.

In lieu of flowers, Mr. Taylor's family requests contributions be made to the Lyle Taylor Memorial Scholarship Fund at the Mackay School of Earth Sciences. Checks should be made out to: 'UNR Foundation - Lyle Taylor Scholarship'.

Floyd (Stretch) Petersen

I first met Stretch in the spring of 1979. He was a driller for Boyles Brothers and came to drill for us (Union Carbide) at Monte Cristo in the White Pine Range of White Pine County. Unlike drillers with monikers like "Tarzan" and "Hambone", there was never any question as to why Floyd Petersen was known as "Stretch". He was one of the tallest, biggest people I ever knew but he was the epitome of the term "gentle giant." I never knew him to raise his voice in anger to anyone.

However, he often expressed a deep sense of frustration at not being able to change things he thought were wrong or improve things he thought could be done better. I believe it was this frustration that ultimately drove him to make the leap to become the owner of his own drilling company. I know Stretch spent hours thinking about ways to improve his drill rigs and other equipment; our "after-shifter" talk was usually about air compressors and hydraulic pumps and sample catchers and other things that he thought would improve drill rates or increase sample recovery. He was an inveterate tinkerer and was always changing something on one of his rigs.

Stretch was as considerate of others as anyone I have ever known. He never failed to ask, "How's Cheryl!", "How's 'The Kid'" and he was genuinely interested in an answer. In an age when so many are concerned only with the bottom line or their own self interests, Stretch harkened back to a time when pride was taken in doing things to the best of ones ability even if profit suffered a little because of the effort.

I feel a deep sense of loss at the untimely passing of one of the last of the old breed of drillers; one who helped make exploration geology what it once was, a fun, challenging and romantic endeavor. We will miss you Stretch.

ACTIVITY UPDATE

Mike Brady, March 2004
www.activityupdate.com

NEVADA

Silver Standard Resources Inc. announced that based on recent drill results at the Maverick Springs Project, resources aggregate 69,630,000 tons @ 1.0 opt Ag indicated and 85,500,000 tons @ 1.0 opt Ag inferred. (was 27,280,000 tons @ 1.19 opt Ag indicated and 56,650,000 tons @ 1.21 opt Ag inferred)
N.M.: May 21

Mauricio Hochschild+Co. announced that it acquired an option to earn a 51% interest in the Highland Property from Rio Fortuna Exploration Corp. for \$2,000,000 in exploration expenditures over 3 years.
Press Release: April 19

Nevada Pacific Gold Ltd. announced that it acquired an option to earn a 100% interest in the Pat Canyon Property from private interests for undisclosed terms.
N.M.: May 28

Rio Fortuna Exploration Corp. announced that it acquired an option to earn a 100% interest in the Buz Property from private interests for \$57,000 cash and 180,000 shares over 4 years.
Press Release: May 21

Newmont Mining Corp. announced that open-pit reserves at the Carlin Complex aggregate 222,800,000 tons @ 0.044 opt Au proven+probable. (was 181,800,000 tons @ 0.042 opt Au proven+probable)
2003 Annual Report

Newmont Mining Corp. announced that underground reserves at the Carlin Complex aggregate 8,800,000 tons @ 0.550 opt Au proven+probable. (was 10,000,000 tons @ 0.570 opt Au proven+probable)
2003 Annual Report

Newmont Mining Corp. announced that reserves at the Twin Creeks Mine aggregate 62,200,000 tons @ 0.077 opt Au proven+probable. (was 47,600,000 tons @ 0.081 opt Au proven+probable)
2003 Annual Report

New Sleeper Gold Corp. announced that recent drill results at the Sleeper/West Woods Project include 222.3-240.5 meters @ 0.328 opt Au (WW-0804); 260.1-267.4 meters @ 0.249 opt Au (WW-1004) and 251.6-259.2 meters @ 0.882 opt Au (WW-1404). (resource = 150,000 tons @ 0.363 opt Au)
M.J.: June 4

Constellation Copper Corp. announced that it purchased the crushing and SX-EW facilities at Tonopah from Equatorial Mining NL for undisclosed terms. The equipment will now be transported to the Lisbon Valley Project in Utah.
P.D. May 2004

Millennium Silver Co. announced that it acquired an option to earn a 100% interest in the Silver Star Property from Mt. Evans Geosciences Inc. for \$15,000/year payments.
Press Release: June 3

**VISIT THE GSN WEBSITE AT:
www.gsnv.org**

GEOLOGICAL SOCIETY OF NEVADA



gsn@mines.unr.edu • www.gsnv.org
Telephone (775) 323-3500 FAX (775) 323-3599
Post Office Box 13375
Reno NV 89507
USA

NON PROFIT
ORGANIZATION
U.S. POSTAGE
PAID
RENO, NV
PERMIT NO. 625

CAN YOU REALLY TELL THE DIFFERENCE?

WE CAN



**IT LOOKS EASY, BUT OFTEN IT TAKES AN EXPERT
TO GET THE JOB DONE.**

As the established leader in Professional Personnel Services to the Mining and Minerals Industry, Geotemps recruits, screens, and employs all levels of experienced, qualified personnel. Geotemps stands with the industry in **Government Lobby Efforts**, with **Business Donations**, and with **Industry Associations**.



PROFESSIONAL STAFFING FOR THE MINERALS INDUSTRY
www.geotemps.com mining@geotemps.com

RENO, NV
775-746-7146
970 CAUGHLIN XING
SUITE 102, 89509
FAX: 775-746-7156

ELY, NV
775-289-6448
725 AVENUE K,
SUITE B, 89301
FAX: 775-289-6472

ELKO, NV
775-738-4707
557 WEST SILVER ST.,
SUITE 201A, 89801
FAX: 775-738-0409

TUCSON, AZ
520-292-1000
4760 NORTH ORACLE RD.,
SUITE 200, 85705
FAX: 520-292-9100