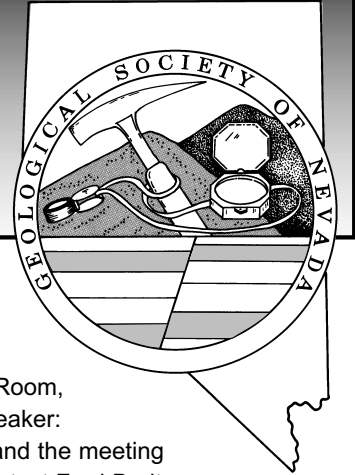


GSN NEWSLETTER



February 2004, Vol. 18, No. 2

CALENDAR OF EVENTS

- Feb. 11th
Wednesday** WINNEMUCCA CHAPTER MEETING: Humboldt Room, Red Lion Hotel and Casino, Winnemucca, NV. Speaker: to be announced. Refreshments start at 6:30 pm and the meeting starts at 7:00 pm. Sponsor is Degerstrom N.A. Contact Fred Breit 775/635-4979 (days) or Fred Holzel 775/625-4658 (evenings).
- Feb. 20th
Friday** GSN MEMBERSHIP MEETING: Reno Elks Lodge, Reno, NV. Speaker: Curt Everson, President, Nevada Pacific Gold, Inc., "Geology and Mineralization of the Limousine Butte Gold Deposits, White Pine County, Nevada." Social hour at 6 pm; dinner at 7 pm, and talk at 8 pm. Please contact Shannon Fitzpatrick at 775/323-3500 or gsn@mines.unr.edu.
- Feb. 26th
Thursday** SOUTHERN NEVADA CHAPTER MEETING: Lilly Fong Geoscience Building UNLV Campus. Speaker: Maxwell Blanchard, Planetary Scientist, "A Discussion of Geologic Features on Venus." Social hour at 5:30 pm and talk at 6:30 pm. Please contact Amy Brock at 702/895-1132 or alb@unlv.edu.
- TBA** ELKO CHAPTER MEETING: Western Folklife Center, Elko, NV. Speaker: to be announced. Refreshments at 6:30 pm, presentation at 7:00 pm. Contact Steve Kulinski for more information, 775/778-8867.

GSN Newsletter is published monthly except June and July
Geological Society of Nevada, PO Box 13375, Reno, NV 89507 USA, 775/323-3500, www.gsnv.org

PRESIDENT
Clancy Wendt
Consultant
clancyw@clancywendt.com

VICE PRESIDENT
Gassaway Brown
Consultant
gassaway@mindspring.com

SECRETARY
Leslie Olmstead
Nevada Contact Inc.
lstmstead@nevadacontact.com

TREASURER
Camille Prenn
Mine Development Associates
cami@mda.com

MEMBERSHIP CHAIR
Greg McN. French
Consulting Geologist
GMcNFrench@aol.com

PUBLICATION CO-CHAIRS
Elizabeth A. Zbinden
Independent
E_Zbinden@geology.reno.nv.us

Ruth Carraher
C&M Consultants
RACarraher@aol.com

OFFICE MANAGER
Shannon Fitzpatrick
gsn@mines.unr.edu

FROM THE PRESIDENT

Clancy Wendt, GSN President 2003-2004

Well, the Cinderellas are down to two and we're still waiting to make an official announcement of their presidencies. The first one to emerge is Bob Thomas, our recent president. He must have liked the title so much he decided to make it permanent. Bob is the new President and CEO of Toquima Minerals Corporation. We are especially happy to announce the newest Vice President of an Exploration Group, WELCOME HOME BILL STANLEY! Bill will be joining Atna Resources as their new Vice President here in Reno. I bet he will not miss the summers in Phoenix.

We continue to have some great people willing to give talk. The January talk was exceptional. Dr. Dieter Krewedl's presentation on Cerro Bayo and the Martha mines in Chile and Argentina was very informative and well received.

I want to thank our huge list of sponsors for the social hour in January. All of them really stepped up to the plate. Dynatec, **MIRANDA GOLD** Corporation, Gold Summit Corporation, Dr. Anthony P. Taylor, Balfour Holdings, Inc, Robert Schafer, and Newcrest Resources all helped to make the social hour a very enjoyable event.

GSN has an Exhibitor's booth reserved at the Prospectors and Developers Convention to be held in Toronto March 7-10. We are currently seeking volunteers to help cover the booth-sitting duties. If you are planning to attend this meeting and would be willing to volunteer some time, please contact Shannon at the GSN office, Elizabeth,

continued on page 2

FEBRUARY SPONSOR



MINING PERSONNEL SERVICES

LYLE TAYLOR
PRESIDENT & CEO

970 CAUGHLIN CROSSING, SUITE 102 • RENO, NV 89509
P.O. BOX 11532 • RENO, NV 89510

775.746.7146
www.geotemps.com

Fax 775.746.7156
ltaylor@geotemps.com



FROM THE PRESIDENT *continued from page 1*

or Clancy. Remember, if you sit down for a while everyone that you want to see will come by. The more people who share the duty, the easier the job will be.

The February talk by Curt Everson, President of Nevada Pacific, on the "Geology and Mineralization of the Limousine Butte Gold Deposits, White Pine County, Nevada" will be very interesting now that Nevada Pacific is becoming a major gold producer.

Thank you **Geotemps** for your sponsorship of the February meeting. We can not say thank you enough to our sponsors, so please do business with them whenever possible.

The Roundup in Vancouver was attended by all whom were willing and able. The meeting was very up beat and local Reno/Elko prospectors were peddling their properties to the unsuspecting Canadians. With the dollar going the other way, the Canadians are getting a real deal on Nevada Properties.

ATTENTION: Laura Skaer has gotten word that the Department of Interior has included a 25% increase in the claim maintenance fee (\$100 to \$125 per claim) in their new budget request. It also appears that the Departments budget writers are supporting the increase. The proposed budget also includes a continuation of the Patent moratorium. In addition, they say that the Department of Interior intends to issue a cost recovery rule for mine permitting.

The GSN Foundation wishes to thank the following donors:

Elizabeth Crafford	John Norby
Tench Page	Robert Schafer
Kelvin Buchanan	David Mathewson
William Wilson	John Prochnau
Charles Sewell	

From the Foundation Chairman:

Greetings to all GSN members, and wishing all a prosperous and interesting New Year! The Foundation is ramping ahead with fundraising efforts, reaching out into the communities for their support and sponsorship. As well, Doug Cook and his GSN Ad Hoc group are providing a forum for brainstorming additional ideas relative to the Foundation's need for funding and a broader outreach.

Please contact me at 775-849-9707 if you have any comments, ideas, etc. I look forward to working with many toward expanding the Foundation's outreach and successes. *Ann Carpenter*

SYMPOSIUM 2005 VOLUNTEERS ARE REQUESTED

The Editors are seeking experienced geoscientists willing to act as referees for full-length and short technical papers. Please refer to the web site (www.gsn2005.org) for more information about the subjects to be covered. More information on volunteering may be obtained by calling the GSN office at 775-323-3500 or the Editors at 775-746-4856.

PUBLIC LANDS

In the coming months, several meetings will be taking place regarding Public Lands, specifically Wilderness Study Areas. These study areas have been in limbo for several years. Changes are indicated in the way WSAs are managed as a result of recently implemented litigation over wilderness areas in Utah, and the new approach holds promise for greater consideration of multiple uses on such lands. Members of the public are invited to attend the meetings and address the subcommittee. Meetings will be held around the state in the following months to solicit input from interested parties. Interested parties are strongly encouraged to attend these meetings. The following is the Nevada Legislature website and a list of upcoming meetings:

<http://www.leg.state.nv.us/72nd/Interim/Scheduler/>

Legislative Committee on Public Lands Subcommittee to Study Wilderness Areas and Wilderness Study Areas (S.C.R. 7)

Scheduled Meetings:

1-23-04 - 10:00 AM — This is the second meeting of the 2003-2004 Interim. Caliente Youth Center, U.S. Highway 93, Caliente, Nevada. Please see Agenda for details.

2-06-04 - 9:00 AM — This is the third meeting of the 2003-2004 Interim. Bristlecone Convention Center and Visitors Bureau, Sage and Juniper Rooms, 150 Sixth Street, Ely, Nevada. The Agenda is not yet available.

3-25-04 - 9:00 AM — This is the fourth meeting of the 2003-2004 Interim, Western Heritage Interpretive Center, Bartley Ranch Regional Park, 6000 Bartley Ranch Rd., Reno, Nevada. The Agenda is not yet available.

4-29-04 - 1:00 PM — This is the fifth meeting of the 2003-2004 Interim. Lovelock, Nevada. The Agenda is not yet available.

6-11-04 - 9:30 AM — Room 2135 of the Legislative Building, 401 S. Carson Street, Carson City, NV. Videoconference Room 4401 of the Grant Sawyer State Office Building, 555 E. Washington Avenue, Las Vegas. This is the sixth and final meeting and final work session of the 2003-2004 Interim. The agenda is not yet available.

Past Meetings:

12-18-03 - Minutes not yet available.

GSN February 20, 2004 Membership Meeting

Date: Friday, February 20, 2004

Time: Social-6:00, Dinner-7:00, Meeting-8:00

Reservations: 775/323-3500; fax323-3599,
e-mail gsn@mines.unr.edu

Deadline: Reserve by 11 am Thursday, February 19

Location: Elks Lodge, 597 Kumle Lane, Reno, NV

Directions: Across (W) from the Reno-Sparks Convention Center (S Virginia St), behind the Les Schwab Tire Center

Speaker/topic: Curt Everson, Nevada Pacific Gold (US), Inc.
See abstract below.

GEOLOGY AND MINERALIZATION OF THE LIMOUSINE BUTTE GOLD DEPOSITS, WHITE PINE COUNTY, NEVADA

Curt Everson, President, Nevada Pacific Gold (US), Inc.

Nevada Pacific Gold's Limousine Butte Project is located in the unsurveyed Townships of 22 and 23 North, Range 61 East, on the west flank of the Cherry Creek Range, White Pine County, Nevada. Throughout the last forty years multiple exploration companies have explored and drilled several zones of low-grade gold and copper mineralization in the project area. Nevada Pacific Gold (NPG) acquired the property through claim staking in 1997 and began compiling all the historical geologic and geochemical data produced over this forty year period.

Gulf Minerals identified a porphyry/skarn type magnetic signature in Butte Valley with a high-level aeromagnetics survey in the mid-1950's. The Newmont/New Jersey Zinc Joint Venture first drilled the discovery in 1962. Bear Creek Mining later calculated the porphyry to contain a resource of 50 million tons of 0.6% copper which is covered by a 1500 to 2500 foot thick post-mineral slide block. Re-logging of several holes in the porphyry system suggested a late (later?) gold system overprint crosscutting and replacing skarn altered sediments and hosted within argillized rhyolite. The best intercept in the skarn/porphyry consisted of 701 feet of 0.019 opt gold, in drill hole BV-10. A small gold resource of 91,000 ounces was produced from shale and jasperoid hosted dolomites at the Golden Butte Mine by Alta Gold from 1987-1989. Between the Golden Butte mine and the Butte Valley porphyry, several gold anomalies are present in the Paleozoic carbonate and clastic rocks that range in age from the Devonian Pilot Shale to the Pennsylvanian Ely Limestone.

Exploration drilling and geologic mapping in the Golden Butte Mine area (Resurrection Ridge) has identified that gold was formed along the edge of an Eocene age volcanic filled graben or possible caldera margin. The graben contact fault is a "feeder fault", containing high-grade gold (30 feet of 0.260 opt) at the shale-dolomite graben fault contact. The strike extension of this fault, and the alteration associated with it, is at least six miles long.

On April 1, 1999 Newmont Mining Corporation and NPG entered into a joint venture agreement to explore the Limousine Butte property. By June of 2002, Newmont had spent \$1,048,220 on identifying and drilling twenty one sediment hosted gold targets within a 25 square mile area. Drilling by Newmont and NPG, to date, has defined six oxide gold mineral inventories containing 39.4 mt grading 0.016 opt gold for a total of 620,000 ounces of gold.

In 2002, Newmont elected to sell back its interest in Limousine Butte and presently holds a sliding production royalty of 1.5% to 2.5%. Meanwhile, NPG continues to explore the project area having completed another round of drilling in 2003, intersecting additional high grade (20' @ 0.309 oz/t) and low grade (195' @ 0.05 oz/t) gold mineralization in the Resurrection Ridge area.

WILDERNESS STUDY AREAS

The Agenda of the Friday, January 23, 2004 meeting of the Legislative Committee on Public Lands' Subcommittee to Study Wilderness Study Areas can be viewed at the following link: [http://www.leg.state.nv.us/72nd/Interim/Scheduler/Legislative Committee on Public Lands Subcommittee to Study Wilderness Study Areas and Wilderness Study Areas \(S.C.R.7\)](http://www.leg.state.nv.us/72nd/Interim/Scheduler/Legislative%20Committee%20on%20Public%20Lands%20Subcommittee%20to%20Study%20Wilderness%20Study%20Areas%20and%20Wilderness%20Study%20Areas%20(S.C.R.7)) If you have any questions, please contact Gayle Nadeau at (775)684-6825.

UPCOMING EVENTS

Feb. 11th, Wed. – WINNEMUCCA CHAPTER MEETING: Humboldt Room, Red Lion Hotel and Casino, Winnemucca, NV. Speaker: to be announced. Contact Fred Breit 775/635-4979 (days) or Fred Holzel 775/625-4658 (evenings).

Feb. 20th, Fri. – GSN MEMBERSHIP MEETING: Reno Elks Lodge, Reno, NV. Speaker: Curt Everson, President, Nevada Pacific Gold, Inc., "Geology and Mineralization of the Limousine Butte Gold Deposits, White Pine County, Nevada." Contact Shannon Fitzpatrick at 775/323-3500 or gsn@mines.unr.edu.

Feb. 26th, Thu. – SOUTHERN NEVADA CHAPTER MEETING: Lilly Fong Geoscience Building UNLV Campus. Speaker: Maxwell Blanchard, Planetary Scientist, "A Discussion of Geologic Features on Venus." Contact Amy Brock at 702/895-1132 or alb@unlv.edu.

Mar. 7-10th – PDAC International Trade Show, Metro Toronto Convention Centre, North Bldg. 416/362-1969 or info@pdac.ca.

TBA – ELKO CHAPTER MEETING: Western Folklife Center, Elko, NV. Speaker: to be announced. Contact Steve Kulinski for more information, 775/778-8867.

GSN ON THE ROAD

At December's NWMA meeting, the folks at GSN's booth spread the word about our Society, sold publications, and recruited new members. THANK YOU to Dave Shaddrick, Tom Callicrate, Elizabeth Zbinden, and Ruth Carraher for help.

Now we're going to the PDAC in March. If you are going too, please stop by the booth and say hello. The best convention experience, of course, comes when you spend a little time staffing a booth. If you have a couple hours or more to join us, please contact Elizabeth Zbinden (E_Zbinden@geology.reno.nv.us). Also, if you can take along a small box of books for the booth display as part of your luggage, please let Elizabeth know, or Shannon in the GSN office (775/323-3500).

BLM Requests Nominations for 2004 Reclamation and Sustainable Mineral Development Awards

The BLM is requesting nominations for the 2004 Awards. The awards program recognizes solid mineral development operations that practice sustainable development and/or represent examples of reclamation or environmental stewardship. The BLM created these awards to highlight some of the finest examples of responsible mineral development. There are two types of awards, the Hardrock Mineral Environmental Award and the Hardrock Mineral Award for Community Outreach and Economic Security. Mining companies, regulatory authorities, geologists, and members of the general public may submit nominations for the awards. Detailed information on the nominations and selection processes, including the required format for nominations, can be found on the BLM website at: www.blm.gov. All nomination forms for the 2004 awards program must be completed by March 1, 2004 and submitted to BLM, Attn: Solid Minerals, P.O. Box 12000, Reno, Nevada 89520.

PAID ADVERTISEMENT

WE CAN HELP!

- Environmental and exploration support services
- Celebrating 40 years of service to the mining industry
- Experience in Mexico / Canada / Alaska



NORTH AMERICAN EXPLORATION INC.
NORTH AMERICAN MINE SERVICES INC.
GEOLOGY | GEOPHYSICS | GEOCHEMISTRY
HYDROLOGY | ENVIRONMENTAL SERVICES

472 North Main • Kaysville, Utah 84037 • Phone (801) 546-6453 Fax (801) 546-0884
nae@nae-xploration.com

Geological Society of Nevada Symposium 2005

WINDOW TO THE WORLD

Talks & Posters
Core Shack
Vendor Exhibits

Short Courses & Seminars
Field Trips
Networking

Call for papers: We invite geoscientists worldwide to submit original papers for oral or poster presentation at the Symposium. Descriptive papers on recently discovered ore deposits are especially invited.

Geological Society of Nevada Symposium 2005, gsnsymp@unr.edu
www.gsn2005.org, 775-323-4569, fax 775-323-3599
PO Box 13375, Reno, NV 89507-3375

The Howard Winn \$5,000 Undergraduate Scholarship 2004-2005

Mackay School of Mines, University of Nevada, Reno

Howard Winn Undergraduate Scholarships for students who major in **Mining Engineering, Geological Engineering, or the Metallurgical Engineering option of Material Science & Engineering.**

Up to four of these prestigious \$5,000 4-year-renewable scholarships will be awarded for *fall, 2004*.

Eligibility: 1) Applicants (either incoming freshmen or new transfer students) must be accepted for admission to the University of Nevada, Reno by Feb. 1, 2004, 2) must be a declared major of Mining Engineering, Geological Engineering, or the Metallurgical Engineering option of Material Science & Engineering, 3) must have achieved a high school un-weighted GPA of 3.5 or better, and have standardized test scores of at least 630 SAT in *math* or 28 ACT in *math*.

Apply by Feb. 1, 2004: 1) Official admission to UNR, 2) apply for scholarships at

**www.finaid.unr.edu/scholarships.php
and 3) *mail in attached self-addressed postcard.***

For more information, call: Mackay Scholarship Chair at 775-784-6691, x134 or Mackay Student Services at 775-327-2056.

Howard's first love was the Mackay School of Mines at the University of Nevada, Reno, where he established a scholarship endowment for students, and an endowment to fund the purchase of publications for the DeLaMare Library at UNR.

We are grateful to Howard Winn for this contribution to our deserving students!

Jo Beth Allen
Professional Graphics

CAD Drafting/Digitizing/Scanning
High Resolution Presentation Graphics
Plotting/Printing
Geologist

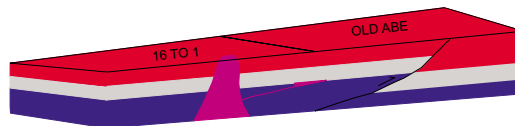
1055 Joshua Drive
Reno, Nevada 89509

Phone: 775-324-7960
Fax: 775-324-7583

jobeth@yellowsb.net

G.I.S. Land Services

Greg Ekins M.S. R.L.P. #32306 President
Mineral Landman - Computer Draftsman
"From Courthouse Records to Final Map"



AutoCad - ArcView - Mapinfo
Geologic, GeoChem and Land Status Maps
www.gislandservices.com

E: greg@gislandservices.com
P: 775-746-8803 F: 775-746-8802

6635 Broadridge Ct.
Reno, NV 89523

Fire Assay
ICP - OES
ICP - MS
AAS
Custom Preparation
Bullion Analyses
BLEG

Corporate Office
1500 Glendale Avenue
Sparks, NV U.S.A. 89431-5902
Telephone (775) 356-0606
Fax (775) 356-1413

Elko Office
2320 Last Chance Road
Elko, NV U.S.A. 89801-4852
Telephone/Fax (775) 738-9100

E-mail: AALADMIN@aallabs.net
Website: www.aallabs.com

**American
Assay &
Environmental
Laboratories**



MINERAL EXPLORATION SERVICES

**SOIL SAMPLING
CLAIMSTAKING
PROPERTY EVALUATION
MINE HAZARD FENCING**

5655 Riggins Ct., #15, Reno, NV 89502
Tel: (775) 954-1082 Fax: (775) 829-6882
email: day@mineralexploration.com

ALS Chemex

The World's Leading Mineral Exploration
& Minesite Laboratory Group for over 37 Years

Wherever you are, we offer . . .
complete Lab Set Up & Mineral Analysis

Over 40 laboratories & offices in North &
South America, Africa & S.E. Asia



Reno
Tel: 775-356-5395
Fax: 775-355-0179

Elko
775-738-2054
775-738-1728

Fairbanks
907-452-2188
907-452-2227



**Carlin Trend Mining
Supplies & Service**

369 5th St., Elko, NV 89801
(775) 778-0668, Fax: (775) 778-0687, carlintrend@frontiernet.net

Geological Consulting - Claim Staking - Soil Sampling
Mineral Surveys - Mine Hazard Fencing
Geology & Drafting Supplies - AutoCad & GIS
Temporary Employees in All Fields

Petrographic and Ore Microscopy Services

for applications in the following areas:

- Base and Precious Metals
- Mineral Exploration
- Process Mineralogy
- Industrial Minerals
- Geological Mapping
- Forensic Geology

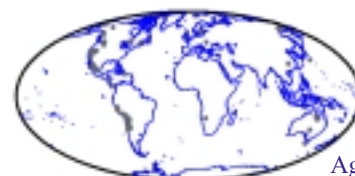


P.O. Box 10080
American Canyon, CA 94503
Phone: 707-553-2772
E-Mail: sfmicro@earthlink.net

Schurer & Fuchs

Joseph A. Laravie
135 Flora Place
Spring Creek, NV 89815
jlaravie@frontiernet.net
775-777-8223
775-397-1424 (Cell)

Geologist
GIS Programmer



- Mapinfo - MapBasic
- ArcView - Avenue

Ag

NEVADA 24K QUAD GEOLOGY MAPS IN GIS VECTOR FORMATS

GEOLOGICAL SOCIETY OF NEVADA



gsn@mines.unr.edu • www.gsnv.org
Telephone (775) 323-3500 FAX (775) 323-3599
Post Office Box 13375
Reno NV 89507
USA

NON PROFIT
ORGANIZATION
U.S. POSTAGE
PAID
RENO, NV
PERMIT NO. 625

CGS, INC.

Proudly presents a
“Golden Opportunity”
Open House

DATE: March 19, 2004

TIME: 3 PM - 8 PM

LOCATION:

RENO ELKS LODGE

We will have several manufacturers
represented to answer all your questions.

For more information please contact us @
(800) CGS-MULE or mulebox@cgsmule.com

GSN RECOMMENDATION POLICY

Over the last year the GSN office has been contacted with increasing frequency regarding consultants, labs and drill companies. It is the policy of the GSN not to give recommendations.

The GSN office will however, provide a list or PDF file of the GSN Directory and Newsletter Advertisers. If additional information is needed, a copy of the GSN Directory is recommended.

Digital advertisements (exported as EPS, TIFF, PICT, or PDF with preview) and payment for the newsletter advertisement must be received by the 20th of the month in order to be placed in the following month's newsletter. Classifieds need not be camera ready.