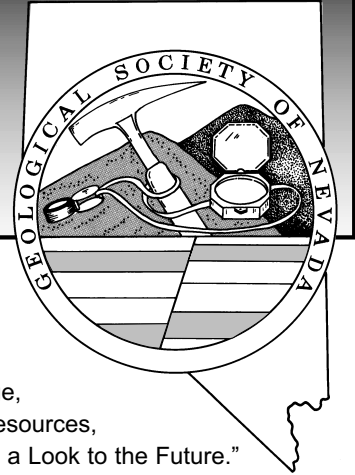


# GSN NEWSLETTER



March 2004, Vol. 18, No. 3

## PRESIDENT

**Clancy Wendt**  
Consultant  
clancyw@clancywendt.com

## VICE PRESIDENT

**Gassaway Brown**  
Consultant  
gassaway@mindspring.com

## SECRETARY

**Leslie Olmstead**  
Nevada Contact Inc.  
l olmstead@nevadacontact.com

## TREASURER

**Camille Prens**  
Mine Development Associates  
cami@mda.com

## MEMBERSHIP CHAIR

**Greg McN. French**  
Consulting Geologist  
GMcNFrench@aol.com

## PUBLICATION CO-CHAIRS

**Elizabeth A. Zbinden**  
Round Mountain Gold Corp.  
E\_Zbinden@geology.reno.nv.us

## Ruth Carraher

C&M Consultants  
RACarraher@aol.com

## OFFICE MANAGER

**Shannon Fitzpatrick**  
gsn@mines.unr.edu

## CALENDAR OF EVENTS

**Mar. 19<sup>th</sup>  
Friday**

**GSN MEMBERSHIP MEETING:** Reno Elks Lodge, Reno, NV. Speaker: Ted Whilton, Queenstake Resources, "Jerritt Canyon, Some History, A Few Myths, and a Look to the Future." Social hour at 6 pm, dinner at 7 pm, and talk at 8 pm. Please contact Shannon Fitzpatrick at 775/323-3500 or gsn@mines.unr.edu.

**Mar. 25<sup>th</sup>  
Thursday**

**SOUTHERN NEVADA CHAPTER MEETING:** Lilly Fong Geoscience Building UNLV Campus. This will be a joint meeting with AEG. Speaker: Craig Westenburg, USGS Hydrologist. Social hour at 5:30 pm and talk at 6:30 pm. Please contact Amy Brock at 702/895-1132 or alb@unlv.edu.

**TBA**

**WINNEMUCCA CHAPTER MEETING:** Humboldt Room, Red Lion Hotel and Casino, Winnemucca, NV. Speaker: to be announced. Refreshments start at 6:30 pm and the meeting starts at 7:00 pm. Contact Fred Breit 775/635-4979 (days) or Fred Holzel 775/625-4658 (evenings).

**TBA**

**ELKO CHAPTER MEETING:** Western Folklife Center, Elko, NV. Speaker: to be announced. Refreshments at 6:30 pm, presentation at 7:00 pm. Contact Steve Kulinski for more information, 775/778-8867.

**GSN Newsletter is published monthly except June and July**  
Geological Society of Nevada, PO Box 13375, Reno, NV 89507 USA, 775/323-3500, www.gsnv.org

## FROM THE PRESIDENT

Clancy Wendt, *GSN President 2003-2004*

Well the glass slipper still does not fit anyone's foot. Maybe by the meeting all will become clear. Our two Cinderellas are still not talking publicly.

Congratulations to Rob McLeod on his new job at Full Metal Minerals. Jeff Pontius has been promoted to North American Exploration Manager. He will be moving to Denver and closing the office in Elko.

The February talk by Curt Everson was very well received. Great talk Curt! (Except for the part about my being there at the creation of your super "resource".) If I had been there you must have been there to see me.

The Round Up meeting in Vancouver was very well attended. Half of the membership seemed to be there. The Blue Horizon Hotel, now called the Nevada Blue Horizon, was the meeting place for most of the geologists. King Earl was holding court in his room and was seen hobbling around the lobby. Deals were being made everywhere, on planes, in hallways, over drinks, etc.

One of the panel groups at the Cambridge House financial talks indicated that they would not consider any company that did not have properties in Nevada. Good thinking on their part.

The March talk will be deja vu all over again. Ted Wilton, Vice President for Queenstake Resources will give a talk on the Jerritt Canyon complex. This will also be the focus of our Spring Field Trip, which promises to be excellent. See Gass's information for a sign-up sheet and we will see you then.

*continued on page 2*

## MARCH SPONSOR



**CGS, inc**

GEOLOGICAL EQUIPMENT AND SUPPLIES

1335 Greg Street, Suite 103  
Sparks, Nevada 89431  
www.cgsmule.com

Tel: (775) 358-0923  
Fax: (775) 358-8209

"EVERYTHING BUT THE MULE"  
ANYWHERE IN THE WORLD



### FROM THE PRESIDENT *continued from page 1*

The PDAC was the largest show ever. More deals were being made and we all were very impressed by the vast number of people.

A big thank you goes to **Lyle Taylor** and **GEOTEMPS** for their sponsorship of the February meeting. Please contact all our sponsors for you geologic needs.

Thank you to **CGS** for their sponsorship and product show for the March meeting. We will see lots of toys that we cannot live without.

**Mike Brady** has offered to give us his monthly update of what is happening in Nevada. We will start printing this in April.

**Jo Beth Allen**, professional graphic services, donated her time in updating and creating new GSN graphics for the PDAC booth. It was a nice face lift and GSN appreciates the effort.

We also want to thank **Rich Delong** and **Opal Adams** with **Enviroscientists, Inc.** for the use of his Power Point projector at our meetings.

Upcoming talks will include John Cleary on Jade in Guatemala at the April meeting, and completing the year's program, Bob Hays will talk on the new discovery by Placer Dome at Cortez Hills in Lander County. This should get everyone ready to go out to stake more claims if there is any land left to stake.

## 2004 SPRING FIELD TRIP

H. Gassaway Brown, *GSN Vice President*

### GOLD DEPOSITS OF THE INDEPENDENCE MOUNTAINS, ELKO CO., NV

Ore controls, district geology, and regional setting

The GSN spring field trip will visit the gold deposits of Jerritt Canyon and neighboring areas in the Independence Mountains of northern Elko County. Queenstake Resources will host the trip focusing on structural ore controls and district geology of this very productive area. Several open pit gold mines will be visited. Current interpretations of the regional geologic setting and an historical overview of the mining and exploration history of the district will also be included. The field trip is planned for June 4-6.

A registration form will be available in the GSN office as of April 6<sup>th</sup>. It will also be included in the April newsletter. Please contact Shannon Fitzpatrick (775/323-3500, [gsn@mines.unr.edu](mailto:gsn@mines.unr.edu)) to get a copy of the registration form and to get your name on the registration list. The registration deadline will be May 7.

## The GSN Foundation wishes to thank the following donor:

**Gold Level**  
Jeremy Wire

A special thanks to Opal Adams, **Enviroscientists, Inc.** for her time, materials, and creativity on behalf of the GSN Foundation.

### From the Foundation Chairman:

I wanted to take just a little space here to share some very positive news on the GSN Foundation and its scholarship and mapping grant efforts. Connie Howard, UNR, Mackay School of Mines, has helped me recently to understand some of the details of the GSN endowment she oversees, one that was initiated by the GSN and its Foundation in 1990, approximately. Not only do we focus on K-12 Field Trip Grants (thanks to D.D. LaPointe's very capable efforts and guidance), but we have been funding university scholarships since roughly 1990. As well, GSN and its Foundation has funded mapping grants in partnership with NBMG since 1991 or thereabouts. The scholarships have been funded pretty consistently every year since 1991, whereas the mapping grants are a bit more intermittent.

The total for these two efforts "scholarships to UNR and mapping" is in excess of \$110,000. Way to go! The GSN membership has cause to be very proud of these efforts. Connie is very pleased and calls us one of her more steady donors. Let's keep up the great work and expand our efforts to the benefit of more! *Ann Carpenter*

## SYMPOSIUM 2005 VOLUNTEERS ARE REQUESTED

The Editors are seeking experienced geoscientists willing to act as reviewers for full-length and short technical papers. Please refer to the web site ([www.gsn2005.org](http://www.gsn2005.org)) for more information about the subjects to be covered. More information on volunteering may be obtained by calling the GSN office at 775/323-3500 or the Editors at 775/746-4856.

It is expected that over 70 long papers for reviewing by 2 referees and at least 60 short papers for single review will be received. The short time frame for reviews will be from Sept 2004 to Jan 2005, and referees will be asked to complete their reviews quickly by annotating hard copies and returning them to the Editors rapidly. Please refer to the web site for more information.

**Thanks to GEOTEMPS for hosting the February meeting.**

# GSN March 19, 2004 Membership Meeting

**Date:** Friday, March 19, 2004

**Time:** Social-6:00, Dinner-7:00, Meeting-8:00

**Reservations:** 775/323-3500; fax323-3599,  
e-mail gsn@mines.unr.edu

**Deadline:** Reserve by 11 am Thursday, March 18

**Location:** Elks Lodge, 597 Kumle Lane, Reno, NV

**Directions:** Across (W) from the Reno-Sparks Convention Center (S Virginia St), behind the Les Schwab Tire Center

**Speaker/topic:** Ted Whilton, Queenstake Resources  
See abstract below.

## JERRITT CANYON – SOME HISTORY, A FEW MYTHS, AND A LOOK TO THE FUTURE

Ted Whilton\*, Queenstake Resources

Jerritt Canyon is one of the longer-lived gold districts in northern Nevada. The first recognition of significant gold mineralization in the district (the Alchem deposit) was made by geologists of the FMC Corporation in the early 1970s, and the first discovery of a major economic gold deposit (Marlboro Canyon) was made by geologists of Freeport Exploration Company in 1976-1977. Since that time mines in the district have produced slightly more than 7 million ounces of gold. The current production is from three underground mines that collectively produce more than 300,000 per annum.

Jerritt has been considered a district that is dominated by discrete sediment-hosted deposits, although four distinct deposits (Marlboro Canyon, Generator Hill, Murray, and SSX) have past production (plus reserves) of more than 1 million ounces each.

This presentation will focus on a discussion of the discovery of the SSX (Spaghetti Creek), DASH (Dam Creek) and Smith (Coulee) deposits. A general discussion of the geology, particularly the structural controls on mineralization, of these deposits will be presented.

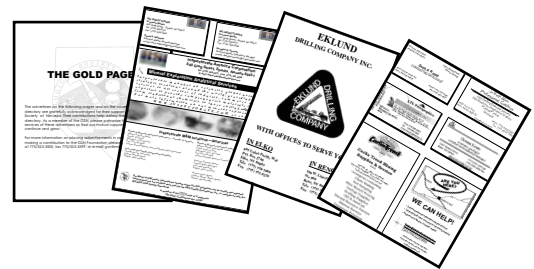
\*Ted recently joined Queenstake Resources as their District Exploration Manager at their Jerritt Canyon operation. Prior to Queenstake he spent seven years with Kinross, where he held various positions, including Managing Director of Kinross Gold Australia and Group Chief Geologist. Ted also worked with the Freeport group (and Independence Mining at Jerritt) for twenty years (including five years at Jerritt Canyon), Granges, and the Union Pacific Railroad Natural Resources Division.

Ted earned a BSc. in Geology from the New Mexico School of Mines, when there were only eleven elements on the periodic table.

## THE MEMBERSHIP DIRECTORY IS COMPLETED

You should be receiving them by the end of the month

The GSN would like to thank the following supporters of the 2003-2004 Membership Directory:



**BSi Inspectorate**  
**CGS Inc.**  
**WDC Exploration**  
**ALS Chemex**

**Eklund Drilling Company**  
**GEOTEMPS**  
**Layne Christensen Co.**

**Nevada Contact Inc.**  
**Enviroscientists, Inc.**  
**Asterimages, Inc.**  
**American Assay Labs**

**Florin Analytical Services**  
**Carlin Trend Mining Services**  
**GIS Land Services**  
**North American**  
**Exploration Inc.**  
**Erwin & Thompson LLC**  
**Diversified Drilling LLC**

CLD Surveying, Jo Beth Allen, Susie Mason, Gregory McN. French, Paul W. Kuhn, Donna Keats, SRK Consulting, Fleetwood R. Koutz, Zsolt F. Rosta, LTL Petrographics, T&T Exploration LLC, Gary Fechko, Fritz Geophysics, Fred Zoerner, and Elizabeth Zbinden

Remember the GSN Directory is your one-stop reference for obtaining contact information for the membership and these fine companies and consultants. Purchase a second copy of the directory! One for the office, one for your field truck or home.

## UPCOMING EVENTS

**Mar. 7-10<sup>th</sup>** – PDAC International Trade Show, Metro Toronto Convention Centre, North Bldg. 416/362-1969 or info@pdac.ca.

**Apr. 30<sup>th</sup>-May 2<sup>nd</sup>** – Field trip at the GSA Section Meeting in Boise. Upper Paleozoic Continental Margin Tectonics of the Western US; Tectonol Stratigraphic Framework of Nevada; Elko area. Overnight two nights in Elko, NV. Limit 26, \$260. For more info, [www.geosociety.org/sectdiv/rockymtn/04rmcdmtg\\_tp.htm](http://www.geosociety.org/sectdiv/rockymtn/04rmcdmtg_tp.htm) or Jim Trexler, 775/784-1504.

**June 4<sup>th</sup>-6<sup>th</sup>** – GSN Spring Field Trip, Gold Deposits of the Independence Mountains, Elko Co., NV. Ore controls, district geology, and regional setting. 775/323-3500, gsn@mines.unr.edu.

**Nov. 7<sup>th</sup>-10<sup>th</sup>** – Geological Society of America Annual Meeting, Denver, CO. Geoscience in a Changing World. For more info, [www.geosociety.org](http://www.geosociety.org).

### 2005

**May 15-18<sup>th</sup>** – GSN Symposium 2005, Window to the World, Reno, NV. 775/323-4569, fax 775/323-3599, gsnsymp@unr.edu, [www.gsn2005.org](http://www.gsn2005.org).

### GSN Newsletter

#### Monthly Advertising Rates

Business card size (3 1/2 x 2'')	\$ 50.00
Quarter page (3 1/2 x 4 3/4'')	150.00
Half page (4 3/4 x 7 1/2'')	300.00
Classified ads \$10/line (up to business card size)	

**For an advertising form, call the GSN office at 775/323-3500 or fax 323-3599. Digital or text ads must be received by the 20<sup>th</sup> of the month to appear in the following month's newsletter.**

Advertising guidelines:

- 1) No more than one 1/2 page ad per company/per issue.
- 2) The GSN Newsletter is published monthly except June and July.
- 3) Placement of ads will be rotated and displayed in the order in which the payment is received.
- 4) Digital ads (exported as EPS, TIFF, PICT, or PDF with preview) and payment **must be received by the 20<sup>th</sup> of the month** in order to be placed in the following month's Newsletter. (Classifieds need not be camera ready.)
- 5) Depending on response, GSN may have to limit the ads in order to provide opportunity for all.
- 6) The Executive Board reserves the right to reject any ad which it may find inappropriate.

## Last-Minute Call – More Science Fair Judges Needed!

Melody Hefner  
2004 Western Nevada Regional Science &  
Engineering Fair

There's still time to help with judging at the 2004 Regional Science and Inventions Fair. Judging will occur on Wednesday, March 10<sup>th</sup> at the Lawlor Events Center. Just reply with the form below - e-mail, fax, mail or phone in your registration.

As in the past, we will meet for a light supper of sandwiches and salads at 5 pm. Judging will begin promptly at 6 pm and will last until done - for the lower grades (k-6), it is usually done by 9 pm. We will have grades 7-12 judging and inventions also again this year. Below is the form to fill in with all your particulars.

Please pass this form on to all your friends and colleagues who may be interested in judging the science fair - many hands will lighten the load! Thanks in advance for all your help - you do make a difference!

## JUDGE REGISTRATION FORM

Name: \_\_\_\_\_

Telephone: \_\_\_\_\_

Email: \_\_\_\_\_

Scientific Expertise (Biology, Chemistry, Computers, Earth Science, Electronics, Engineering, Geography, Hydrology, Mathematics, Medicine, Physics, Social Science, other):  
\_\_\_\_\_  
\_\_\_\_\_

Willing to be a grade leader:

Yes  No

Grade Preference (if any): \_\_\_\_\_

Grade Exemption (if any-ie, child in that grade, teach that grade, know a child in that grade, etc.):  
\_\_\_\_\_  
\_\_\_\_\_

I'll be a "New Inventions" judge if you need me:

Yes  No

Do you need childcare during the judging?:

Yes  No

For how many children: \_\_\_\_\_

Childrens' ages: \_\_\_\_\_

Please reply by email or fax to Melody Hefner. *Thank you!*

Melody Hefner, Volunteer Judge Coordinator  
2004 Regional Science Fair  
Phone 775/425-2808  
Fax 775/425-6128  
email mlhefner@gbis.com

## WE CAN HELP!

- Environmental and exploration support services
- Celebrating 40 years of service to the mining industry
- Experience in Mexico / Canada / Alaska



**NORTH AMERICAN EXPLORATION INC.**  
**NORTH AMERICAN MINE SERVICES INC.**  
 GEOLOGY | GEOPHYSICS | GEOCHEMISTRY  
 HYDROLOGY | ENVIRONMENTAL SERVICES

472 North Main • Kaysville, Utah 84037 • Phone (801) 546-6453 Fax (801) 546-0884  
 nae@nae-xploration.com



## JOSEPH R. ANZMAN

*Exploration Geophysicist*

- consulting
- interpretation
- project management
- geophysical surveys
- domestic & foreign

P.O. Box 370526  
 Denver, Colorado 80237  
 303-337-4559  
 telephone/fax

# ALS Chemex

*The World's Leading Mineral Exploration  
 & Minesite Laboratory Group for over 37 Years*

Wherever you are, we offer . . .  
 complete Lab Set Up & Mineral Analysis

**Over 40 laboratories & offices in North &  
 South America, Africa & S.E. Asia**



**Reno**  
 Tel: 775-356-5395  
 Fax: 775-355-0179

**Elko**  
 775-738-2054  
 775-738-1728

**Fairbanks**  
 907-452-2188  
 907-452-2227



## Carlin Trend Mining Supplies & Service

369 5th St., Elko, NV 89801  
 (775) 778-0668, Fax: (775) 778-0687, carlintrend@frontiernet.net

Geological Consulting - Claim Staking - Soil Sampling  
 Mineral Surveys - Mine Hazard Fencing  
 Geology & Drafting Supplies - AutoCad & GIS  
 Temporary Employees in All Fields

Fire Assay  
 ICP - OES  
 ICP - MS  
 AAS  
 Custom Preparation  
 Bullion Analyses  
 BLEAG

**Corporate Office**  
 1500 Glendale Avenue  
 Sparks, NV U.S.A. 89431-5902  
 Telephone (775) 356-0606  
 Fax (775) 356-1413

**Elko Office**  
 2320 Last Chance Road  
 Elko, NV U.S.A. 89801-4852  
 Telephone/Fax (775) 738-9100

E-mail: AALADMIN@aallabs.net  
 Website: www.aallabs.com



## American Assay & Environmental Laboratories

# MINERAL EXPLORATION SERVICES

**SOIL SAMPLING  
 CLAIMSTAKING  
 PROPERTY EVALUATION  
 MINE HAZARD FENCING**

5655 Riggins Ct., #15, Reno, NV 89502  
 Tel: (775) 954-1082 Fax: (775) 829-6882  
 email: day@mineralexploration.com

## Jo Beth Allen Professional Graphics

CAD Drafting/Digitizing/Scanning  
 High Resolution Presentation Graphics  
 Plotting/Printing  
 Geologist

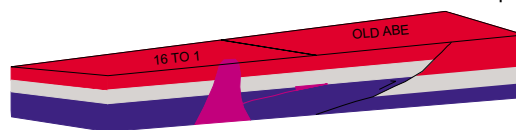
1055 Joshua Drive  
 Reno, Nevada 89509

Phone: 775-324-7960  
 Fax: 775-324-7583

jobeth@yellowsb.net

G.I.S. Land Services

**Greg Ekins M.S. R.L.P. #32306 President**  
 Mineral Landman - Computer Draftsman  
 "From Courthouse Records to Final Map"



Surface Title  
 Mineral Title

AutoCad - ArcView - Mapinfo  
 Geologic, GeoChem and Land Status Maps  
 www.gislandservices.com

E: greg@gislandservices.com  
 P: 775-746-8803 F: 775-746-8802

6635 Broadridge Ct.  
 Reno, NV 89523

# GEOLOGICAL SOCIETY OF NEVADA



gsn@mines.unr.edu • www.gsnv.org  
Telephone (775) 323-3500 FAX (775) 323-3599  
Post Office Box 13375  
Reno NV 89507  
USA

NON PROFIT  
ORGANIZATION  
U.S. POSTAGE  
PAID  
RENO, NV  
PERMIT NO. 625



**CGS, INC.**  
Proudly presents a  
**“Golden Opportunity”**  
Open House



**DATE: March 19, 2004**  
**TIME: 3 PM - 8 PM**  
**LOCATION:**  
**RENO ELKS LODGE**

**Garmin, Igage Mapping, Meiji & Filson**  
are just a few of the suppliers that will be  
represented to answer all your questions.

For more information please contact us @  
(800) CGS-MULE or mulebox@cgsmule.com

## Geological Society of Nevada Symposium 2005

### WINDOW TO THE WORLD

**May 15-18, 2005, Reno, Nevada (USA)**

Talks &  
Posters  
Core Shack  
Vendor Exhibits



Short Courses &  
Seminars  
Field Trips  
Networking

**Call for papers:** We invite geoscientists worldwide to  
submit original papers for oral or poster presentation at the  
Symposium. Descriptive papers on recently discovered ore  
deposits are specially invited.

**Co-hosted by:**

Nevada Bureau of Mines and Geology  
Society of Economic Geologists, and  
U.S. Geological Survey

Geological Society of Nevada Symposium 2005, gsn symp@unr.edu  
www.gsn2005.org, 775-323-4569, fax 775-323-3599  
PO Box 13375, Reno, NV 89507-3375