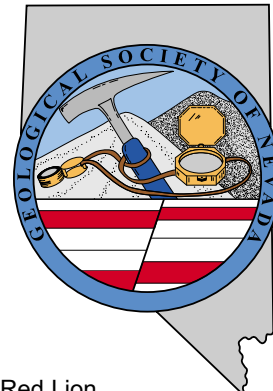


GSN NEWSLETTER



February 2005, Vol. 20, No. 2

PRESIDENT

Dieter Krewedl
Krewedl Mineral Exploration
dkrewedl@usamedia.tv

VICE PRESIDENT

Ellie Davie Leavitt
Consultant
zoracdavie@aol.com

SECRETARY

Leslie Olmstead
Agnico-Eagle (USA) Limited
l olmstead@nevadacontact.com

TREASURER

Camille Prenn
Mine Development Associates
cami@mda.com

MEMBERSHIP CO-CHAIRS

Greg McN. French
Consulting Geologist
GMcNFrench@aol.com

Dave Shaddrick

Golden Odyssey Mining, Inc.
Dshaddrick@aol.com

PUBLICATION CO-CHAIRS

Elizabeth A. Zbinden
Round Mountain Gold Corp.
E_Zbinden@geology.reno.nv.us

Ruth Carraher

C&M Consultants
RACarraher@aol.com

OFFICE MANAGER

Andrea Robinson
gsn@mines.unr.edu

CALENDAR OF EVENTS

- Feb. 9th Wednesday** WINNEMUCCA CHAPTER MEETING: Humboldt Room at the Red Lion at 6:30 pm. Speaker: Karl Marlowe, Project Geologist of Barrick Gold Corporation, An Update of the Geology, History and Recent Activities at Barrick's Archimedes Gold Deposit, Eureka, Nevada. Please contact Fred Breit at 775/635-4979 or fred.breit@newmont.com.
- Feb. 17th Thursday** ELKO CHAPTER MEETING: Western Folklife Center, Elko, NV. Speaker: Eric Saderholm, Newmont Mining Corp., "Geology, Exploration History and Production of the Lone Tree Mine, Humboldt County, Nevada." Refreshments at 6:30 pm, presentation at 7:30 pm. Sponsor is American Assay Labs. Contact Stacy Saari at 775/778-2679 or stacysaari@newmont.com for more information.
- Feb. 18th Friday** GSN MEMBERSHIP MEETING: Reno Elks Lodge, Reno, NV. Speaker: Scott Manske, "How to Shoot an Elephant: A Brief History of Exploration & Discovery in the Superior, Arizona District from 1991-1998." Social hour at 6 pm, dinner at 7 pm, and talk at 8 pm. Contact Shannon Fitzpatrick at 775/323-3500 or gsn@mines.unr.edu.
- Feb. 24th Thursday** SOUTHERN NEVADA CHAPTER MEETING: Room 102, Lily Fong Geoscience Building, UNLV, Las Vegas, NV. Speaker: to be announced. Social with food and drink at 5:30 pm, talk at 6:30 pm. Contact Melissa Hicks at 702/895-1162 or hicksm@unlv.nevada.edu.

Expect the GSN membership directory in February.

GSN Newsletter is published monthly except June and July
Geological Society of Nevada, PO Box 13375, Reno, NV 89507 USA, 775/323-3500, www.gsnv.org

FROM THE PRESIDENT

Dieter Krewedl, *GSN President 2004-2005*

The January GSN dinner meeting was well attended by members wishing to learn more about Midway Gold's activities at the Midway project located east of Tonopah and the Spring Valley property situated north of Rochester. Many thanks go to Alan Branham for an excellent update on the exploration results at Midway and for the first public presentation of an exciting new discovery at Spring Valley. Also, Greg French reported at the meeting that GSN membership is currently at 825. The membership directory for 2004 - 2005 will be distributed during February.

During the meeting, a membership survey was distributed by the GSN Executive Committee asking for comments on the newsletter, field trips, technical talks, etc. The same membership survey is included in this newsletter on page 5 and 6. Help us build a better organization by taking a few minutes to fill out the short questionnaire. We would greatly appreciate any comments you could give us to improve the quality of the GSN programs and services. Please print out the form and mail or fax your comments to the GSN office by February 21st.

Most of you know that Shannon Fitzpatrick resigned from her position as GSN Office Manager at the end of January. We all appreciated Shannon's friendly attitude

and dedication to her job and we wish her well in future endeavors. Andrea Robinson is Shannon's replacement and she is quickly learning the workings of the GSN. Andrea previously worked at the Homestake and Placer Dome offices and is very enthusiastic about being back in the exploration community. I am sure Andrea will provide the same conscientious service to our members as Shannon did for the past two years.

continued on page 2

BSi INSPECTORATE Precious Metals

840 Greg Street - Sparks, NV 89431
Tel: (775) 359-6311
Fax: (775) 359-2944

David A. Williams

Precious Metals General Manager
e-mail: dave.williams@inspectorate.com





FROM THE PRESIDENT *continued from page 1*

Good news! Ellie Davie Leavitt has accepted the position of GSN Vice President for the remainder of the fiscal year. Ellie recently completed her Ph.D. degree at UNR and did her dissertation on the Midas property. She previously worked as an exploration geologist for a number of mining companies including Noranda and Homestake. She will be a very welcomed addition to the GSN Executive Committee.

The next membership meeting will be on February 18th when Scott Manske will present a brief history of the exploration and recent discovery of the deep seated Resolution porphyry copper deposit underneath the Magma copper mine near Superior, Arizona. The deposit is one of the most significant copper discoveries in the United States within the last thirty years containing a resource reported to be at least 1 billion tons averaging 1.5% copper. Thanks go to **BSi Inspectorate** for sponsoring the social hour during the February meeting. This should be another fun and informative meeting and I hope to see you there.

Don't forget to take advantage of the early (by February 28th) Symposium registration. See page 10 for a registration form.

A FEW WORDS FROM SHANNON

It has been a great experience working as the GSN Office Manager for the past two years. I had my concerns since I am not in the geology profession, but you all have been so nice to work with. Thank you for all the kind words you said to me upon receiving my email of resignation. I want to make sure you all know Laura Ruud, GSN Bookkeeper, is to be given a huge thank you for her service and support to GSN and to me, personally. Laura's dedication is admirable. I also want to thank the GSN Executive Committee, the Web Committee and the Education Committee: Dieter Krewedl, Cami Prens, Leslie Olmstead, Greg French, Dave Shaddrick, Elizabeth Zbinden, Ruth Carraher, Mario Desilets, Rachel Dolbier and D.D. LaPointe. They have all been so helpful and wonderful to work with. I can say the same about Raye Buckley, the typographer for the GSN newsletter and directory. Raye does a great job! As Dieter has mentioned in his president's message, I would also like to welcome Andrea Robinson as the new GSN Office Manager. I am confident she will be a good fit. Goodbye and thank you for having me.

GSN EMPLOYMENT NEWS

For all of you who do not get the electronic announcements on the email regarding job openings, you may want to call the GSN office directly. The GSN has been getting several announcements for employment opportunities. If you are looking for work, check with the GSN office.

The GSN Foundation wishes to thank the following donors:

Karl Marlowe	Mac Canby
Scott Manske	Paul Tietz
Ron Parratt	Alan Lander
Ted Jochems	Ken Ainsworth
Howard Shafer	Laura Ruud
John Lucas	James Harris
Walter Lienhard	

A Special Thank you

The GSN Rock Raffle committee sends another word of thanks to a donor. Queenstake Resources donated the sugarbowl pocket barite sample.

GSN 2005 SYMPOSIUM "Window to the World"

Eric Ruud, *Co-Chairman, GSN 2005 Symposium*

As the time counts down to the Symposium, the Organizing Committee finds themselves with only three months left to complete all of the details involved with putting on a major international symposia. This is going to be an exciting meeting with all the new activity and enthusiasm in the gold exploration and mining industry. The Symposium Committee has been hard at work the last four years. So far this is the status of the meeting:



- 70 manuscripts have been submitted
- 112 speakers are in order
- 65 poster presenters are confirmed
- 11 core shacks are committed
- 9 Field trips are mapped out
- 4 Short courses are ready
- SEG pre-Symposium Forum is arranged
- The Big Party is being planned
- The Exhibitors Hall is almost full

There are still a few spaces available for exhibitors to display their services and products. Only one large booth is still available. Reserve your booth today!

There is a need for more peer reviewers for the manuscripts being published in the 2005 Symposium Proceedings Volumes. Please contact Brenda at the GSN Symposium office, 775/355-8388, to volunteer for this worthwhile project. Brenda's office is located inside the Gold Summit office on Caughlin Parkway. Don't wait until the last minute to register for the Symposium, Field Trips, Short Courses, and Exhibits on the website: www.gsn2005.org.

Early registration deadline is February 28, 2005!

Thanks to J-Pacific Gold Inc. for hosting the January meeting.

GSN February 18, 2005 Membership Meeting

Date: Friday, February 18, 2005

Time: Social-6:00, Dinner-7:00, Meeting-8:00

Reservations: 775/323-3500; fax 323-3599,
e-mail gsn@mines.unr.edu

Deadline: Reserve by 11 am Thursday, February 17th

Location: Elks Lodge, 597 Kumle Lane, Reno, NV

Directions: Across (W) from the Reno-Sparks Convention Center (S Virginia St), behind the Les Schwab Tire Center

Speaker/topic: Scott Manske
See abstract below.

HOW TO SHOOT AN ELEPHANT: A BRIEF HISTORY OF EXPLORATION & DISCOVERY IN THE SUPERIOR, ARIZONA DISTRICT FROM 1991-1998

Scott Manske

A district-scale exploration program was undertaken by Magma Copper Company in late 1991 in the Superior (Pioneer) district, approximately 100 km east of Phoenix, Arizona, seeking additional reserves for the soon-to-be depleted Magma mine. The original target was high-grade sulfide veins and sulfide-oxide manto ores, amenable to selective mining and profitable extraction by a 1200 tpd underground mining operation. The exploration program as originally conceived was aimed at delineating a hidden block of Mesozoic volcanic and volcanoclastic rocks lying under the Tertiary dacite tuffs of Apache Leap. This Mesozoic block was known to be at least partly bounded by mineralized structures, cut by veins, and in fault contact with Paleozoic carbonate section prospective for massive sulfide replacement bodies. A surface drilling campaign was designed and implemented to explore beneath unmineralized cover south of the Magma mine workings, in order to define the limits of the Mesozoic rocks in the pre-Tertiary basement.

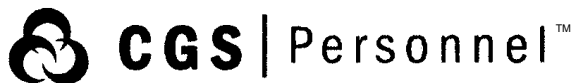
Surface drilling ultimately bracketed a steep, ~EW fault zone that truncated the Mesozoic rocks on the south side of the structural block beneath the Tertiary cover. Analogous to the structural contact of the Mesozoic and Paleozoic rocks within the Magma mine (the North Boundary fault), this new fault zone was named the "South Boundary". The South Boundary proved to be a strike-slip duplex that was intruded by dikes, hosted mineralized fissure veins, and showed evidence of massive sulfide-oxide replacement mineralization in the Paleozoic footwall rocks.

Noting that the Mesozoic intercepts suggested that the structural block was to some degree altered and mineralized across its entire width, at this juncture it was decided to drill a subhorizontal longhole from an underground drill station. This drill hole was directed southwards out of the southernmost headings of the Magma mine, aimed across the Mesozoic block at the South Boundary. The drill hole penetrated to a greater than 1,100 m depth, passing through (a) a series of quartz-eye porphyry dikes, (b) massive sulfide veins with advanced-argillic alteration halos and hypogene chalcocite-digenite-bornite assemblages, and (c) a zone of stockwork quartz-sulfide veining in a pervasively sericitized intercept more than 400 m wide. It was surmised that this drill hole (36108-S27E) had cut across a high structural level of a concealed porphyry center (Manske and Paul, 1996). This drill hole constitutes the geologic discovery of the porphyry system at Superior.

In early 1998 the resource was conceived to be greater than 450 million tons at 1.2 % Cu and 0.2 % Mo. The ore grade material apexed almost 1.5 km below the local ground surface, nearly 200 meters below sea level. Further deep drilling evaluation since 2000 by the current owner, Kennecott / Rio Tinto Zinc, has increased the size of the resource to at least 1 billion tons at 1.5% Cu (Northern Miner, 2004).

Scott Manske received a B.Sc. in Geology from Oregon State University in 1979, a M.Sc. in Geosciences from the University of Arizona in 1980 and a Ph.D. in Applied Earth Sciences from Stanford University in 1991. His industry experience comprises gold exploration and mine development with Gold Fields Mining Corporation in Arizona and California, a brief stint of grassroots gold exploration in the Great Basin for ASARCO Inc., and copper exploration and development for the Magma Copper and BHP Copper companies in Arizona and Latin America. Since 1999 he has been an independent consultant for client projects in Arizona, Mexico, Perú, and east Asia. He recently completed a year-long appointment as a Research Associate at the Colorado School of Mines, working with J. Hedenquist on diatreme-hosted Au-Ag at Roña Montana, Romania. His current assignment involves evaluation of gold and copper properties situated a relaxing 11 hour jeep ride from Ulaan Baator, Mongolia.

See page 11 for upcoming Economic Geology Seminars.



DIXIE BULLOCK
DISTRICT MANAGER

WILMA HATTER
SERVICE REPRESENTATIVE
HATTERW@SOSSTAFFING.COM

412 NORTH MCCARRAN BLVD.
SPARKS, NV 89431
T. 775.331.5227 F. 775.323.7772
WWW.SOSSTAFFING.COM

A Division of SOS Staffing Services, Inc.

WE CAN HELP!

- Environmental and exploration support services
- Celebrating 40 years of service to the mining industry
- Experience in Mexico / Canada / Alaska



NORTH AMERICAN EXPLORATION INC.
NORTH AMERICAN MINE SERVICES INC.
GEOLOGY † GEOPHYSICS † GEOCHEMISTRY
HYDROLOGY † ENVIRONMENTAL SERVICES

447 North 300 West, Ste. 3 • Kaysville, Utah 84037 • Phone (801) 546-6453 Fax (801) 546-0884
nae@nae-exploration.com

Sample Bags

HUGE INVENTORY  LOW, LOW PRICES

Legend, Inc.

140 Manuel • Reno, Nevada 89502 • 775-786-3003
www.legend-reno.com

Petrographic and Ore Microscopy Services

for applications in the following areas:

- Base and Precious Metals
- Mineral Exploration
- Process Mineralogy
- Industrial Minerals
- Geological Mapping
- Forensic Geology



P.O. Box 10080
American Canyon, CA 94503
Phone: 707-553-2772
E-Mail: sfmicro@earthlink.net

Schurer & Fuchs

Geological Society of Nevada Symposium 2005

15-18 May 2005, Reno, Nevada (USA)

WINDOW TO THE WORLD

Talks & Posters
Core Shack
Vendor Exhibits

Short Courses & Seminars
Field Trips
Networking

Geological Society of Nevada Symposium 2005, gsn symp@unr.edu
www.gsn2005.org, 775-323-4569, fax 775-323-3599
PO Box 13375, Reno, NV 89507-3375

Edward Jones

Kent S. Samuelson

Investment Representative

18116 Wedge Parkway
Reno, NV 89511
Bus. 775-852-0909 Toll-free fax 888-690-9171
Toll-free 888-461-3214
www.edwardjones.com

Serving Individual Investors Since 1871

GSN FOUNDATION UPDATE

Greetings and Happy New Year to the GSN Membership. New things are happening in the Foundation. I would like to illustrate what is progressing.

In the recent past we have raised funds to fund our programs – K-12 Field Trip Grants, UNR and UNLV Scholarships, Nevada Bureau of Mines Mapping Grants, and funds for the DeLaMare Library. Mostly, the funds raised annually have barely covered the first two programs, and consequently very little has made it into the endowment funds. The original objective was to raise \$100,000.

Starting early in 2005, we are initiating a new fundraising drive. The funds raised will go 100% to the endowment funds, thanks to a partnership with the GSN. The GSN Executive Committee has voted to support the Foundation's Programs (principally the first two – Field Trip Grants and Scholarships)

for the next 3 years, with annual reviews completed to track successes. This will allow those of us leading the charge on the fundraising to focus on getting the funds into the endowment account, with a new target objective of \$250,000. With a little bit of creative fundraising, and a whole lot of help from our supporters, we are confident we can get there in 3 to 5 years. Thanks to the GSN for its partnership and funding support.

A new core group of Elko GSN leadership is also joining forces, with a new Foundation representative – Steve Kulinski – anchoring the Elko regional-based fundraising efforts. Dave Caldwell has also been key at promoting and advancing the Foundation's outreach in that area.

Many thanks to all who have helped us strategize this new plan – to all on the Foundation's Board and to the GSN Executive Committee. We are advancing our efforts! Help us make this a great success!

Ann Carpenter, Chairman, GSN Foundation

GEOLOGICAL SOCIETY OF NEVADA

2005 MEMBERSHIP SURVEY

The GSN monthly **newsletter** attempts to disseminate timely information that promotes the advancement of the geological sciences, especially as it relates to Nevada. Is the newsletter doing an adequate job of keeping the membership informed? If not, what information should be included or excluded in the newsletter to improve it?

The GSN organizes two **field trips** annually, providing an opportunity for members to learn about the geology and ore deposits of Nevada and the surrounding areas. Where would you like to see the GSN organize a field trip in the future?

Throughout the year, while renewing membership, making dinner reservations or field trip reservations, ordering publications or in any other respect when working with the **administrative office or the executive committee** of the GSN, how would you rate their level of service and efficiency?

The GSN hosts around 8 **technical talks** per year and with only a few exceptions the subjects of these talks concentrate on ore deposits of Nevada. Would you be interested in talks on other geologic topics during the year? Would you like to make any comments on the subjects covered, quality of information or presentation, duration of talks, etc?

As you know, the GSN is a **volunteer** organization. Our success is based upon our members organizing, and participating in, the monthly meetings, field trips and additional events. We would like the success of our organization to continue

and want to encourage all of our members to participate in any way they can. There are many activities we need short-term and long-term help with such as:

Activity	Commitment	Your Name
Field trips	Help the Vice President organize field trips	
Education committee	Help with school rock & mineral presentations, K-12 field trip grant program, science fair judging, and annual picnic organizing	
Foundation	Fundraising	
Executive committee	Commit to serving as a GSN officer	
Student mentoring	Greeting students at the monthly meetings, judging posters, etc.	
Speaker's committee	Help the President brainstorm on speakers for monthly meetings	

Please let the executive committee know if you are interested in helping with any of these activities.

Any additional **comments or constructive ideas** would be appreciated.

Please print and mail comments by February 21st to the GSN office at:

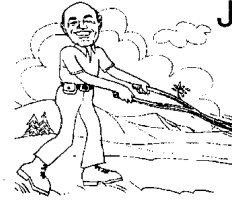
PO Box 13375, Reno, NV 89507, USA
 or fax to: 775/323-3599



MINERAL EXPLORATION SERVICES

**SOIL SAMPLING
CLAIMSTAKING
PROPERTY EVALUATION
MINE HAZARD FENCING**

5655 Riggins Ct., #15, Reno, NV 89502
Tel: (775) 954-1082 Fax: (775) 829-6882
email: day@mineralexploration.com



JOSEPH R. ANZMAN

Exploration Geophysicist

- consulting
- interpretation
- project management
- geophysical surveys
- domestic & foreign

P.O. Box 370526
Denver, Colorado 80237
303-337-4559
telephone/fax



Enviroscientists, Inc.

Reliable Service for All Your Environmental Needs

4600 Kietzke Lane, Suite C129, Reno, Nevada 89502
Phone: (775) 826-8822 Fax: (775) 826-8857

Richard DeLong
President

www.enviroincus.com

Opal Adams
Vice President

ALS Chemex

*The World's Leading Mineral Exploration
& Minesite Laboratory Group for over 37 Years*

Wherever you are, we offer . . .
complete Lab Set Up & Mineral Analysis

**Over 40 laboratories & offices in North &
South America, Africa & S.E. Asia**



Reno
Tel: 775-356-5395
Fax: 775-355-0179

Elko
775-738-2054
775-738-1728

Fairbanks
907-452-2188
907-452-2227

Jo Beth Allen Professional Graphics

CAD Drafting/Digitizing/Scanning
High Resolution Presentation Graphics
Plotting/Printing
Geologist

1055 Joshua Drive
Reno, Nevada 89509

Phone: 775-324-7960
Fax: 775-324-7583

jobeth@yellowsb.net



Carlin Trend Mining Supplies & Service

369 5th St., Elko, NV 89801
(775) 778-0668, Fax: (775) 778-0687, carlintrend@frontiernet.net

Geological Consulting - Claim Staking - Soil Sampling
Mineral Surveys - Mine Hazard Fencing
Geology & Drafting Supplies - AutoCad & GIS
Temporary Employees in All Fields

Fire Assay
ICP - OES
ICP - MS
AAS
Custom Preparation
Bullion Analyses
BLEG

Corporate Office
1500 Glendale Avenue
Sparks, NV U.S.A. 89431-5902
Telephone (775) 356-0606
Fax (775) 356-1413

Elko Office
2320 Last Chance Road
Elko, NV U.S.A. 89801-4852
Telephone/Fax (775) 738-9100

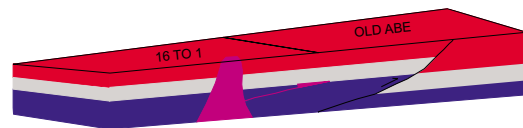
E-mail: AALADMIN@aallabs.net
Website: www.aallabs.com

American Assay & Environmental Laboratories



G.I.S. Land Services

Greg Ekins M.S. R.L.P. #32306 President
Mineral Landman - Computer Draftsman
"From Courthouse Records to Final Map"



Surface Title
Mineral Title

AutoCad - ArcView - Mapinfo
Geologic, GeoChem and Land Status Maps
www.gislandservices.com

E: greg@gislandservices.com
P: 775-746-8803 F: 775-746-8802

6635 Broadridge Ct.
Reno, NV 89523

ACTIVITY UPDATE

Mike Brady, December 2004
www.activityupdate.com

NEVADA

Glamis Gold Ltd. announced that it offered to acquire Goldcorp Inc. for shares on the basis of 1.0 Glamis shares/0.89 Goldcorp shares or roughly \$17.06/share. The Glamis offer is contingent upon the previously announced Goldcorp Inc. and Wheaton River Minerals Ltd. merger being terminated.

W.S.J.: December 17

Miranda Gold Corp. announced that it acquired an option to earn a 100% interest in the Horse Mountain Property from private interests for \$30,000 cash, 25,000 shares and \$30,000/year advance royalty payments.

Press Release: November 23

Miranda Gold Corp.(35%) and Newcrest Resources Inc.(65%) announced that recent drill results at the Redlich Project include 155-345 feet @ 0.020 opt Au (R-33); 225-265 feet @ 0.013 opt Au (R-38); 270-280 feet @ 0.680 opt Au (R-43); 270-285 feet @ 0.330 opt Au (R-45) and 210-220 feet @ 0.045 opt Au (R-47).

Press Release: December 7

Apollo Gold Corp. announced that reserves at the Florida Canyon Mine aggregate 24,217,800 tons @ 0.016 opt Au proven+probable. (was 19,910,000 tons @ 0.015 opt Au proven+probable)

2003 Annual Report

Apollo Gold Corp. announced that it would reduce employment levels at the Florida Canyon Mine by 57 workers as an attempt to improve the profitability of the operation. (reserve = 24,217,800 tons @ 0.016 opt Au proven+probable)

P.D.: October 2004

Apollo Gold Corp. announced that reserves at the Standard Mine aggregate 22,501,700 tons @ 0.018 opt Au proven+probable. (was 17,160,000 tons @ 0.016 opt Au proven+probable)

2003 Annual Report

Hecla Mining Co.(50%) announced that it began the construction of the exploration decline at the Hollister Project. Total planned development includes 5,600 feet of underground drifting and 50,000 feet of underground core drilling. (underground resource = 717,200 tons @ 1.295 opt Au, 7.03 opt Ag inferred)

P.D.: October 2004

Taranis Resources Inc. announced that recent drill results at the Needles/Arrowhead Project include 20.51-20.91 meters @ 0.017 opt Au, 5.72 opt Ag (N-8); 16.2-18.0 meters @ 0.029 opt Au, 7.12 opt Ag (N-25); 31.18-32.58 meters @ 0.051 opt Au, 15.84 opt Ag (N-27) and 24.44-29.26 meters @ 0.037 opt Au, 9.48 opt Ag (N-28).

Press Release: November 16

Newmont Mining Corp. announced that it began the development of the Phoenix Project. Capital costs to produce 420,000-ounces/year gold and 10,500 tons/year copper are estimated at \$200,000,000. (reserve = 174,177,000 tons @ 0.034 opt Au, 0.32 opt Ag, 0.17% Cu proven+probable)

Reno Gazette-Journal: December 17

GSN MEMBERS' PERSONAL NOTES & NEWS

Career Related Moves

▶ Mary Doherty has accepted a position as U.S. Manager for ALS Chemex based in Reno, Nevada. She will be managing the ALS Chemex labs in Elko, Reno, and Winnemucca, Nevada as well as Fairbanks, Alaska. As a geochemist and former exploration and mine geologist, she will be providing geochemistry and sample advice to ALS Chemex clients.

▶ Dave Shaddrick, GSN President 2001-2002, reports that his new company, Golden Odyssey Mining Inc. has completed its IPO, and is trading on the Toronto Ventures Exchange under the symbol GOE. Dave and his partner, Michael Berns, are founders and directors of the company. Dave has agreed to serve as its President and CEO.

Awards and Related Items

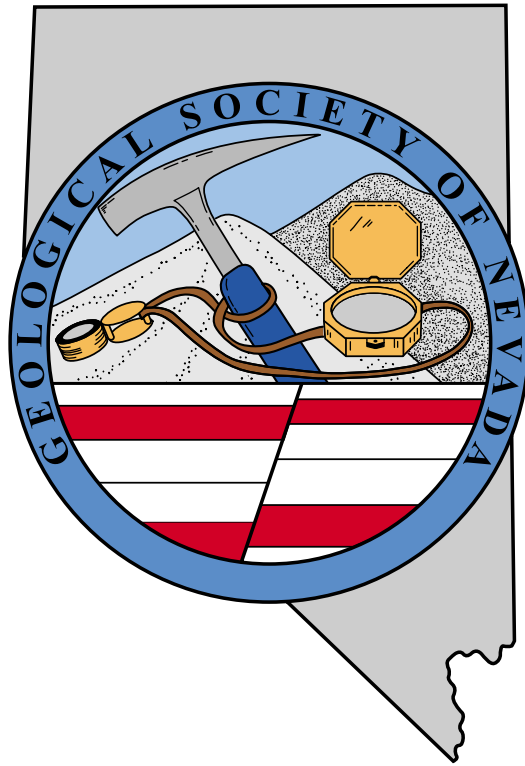
▶ Ronald L. Parratt will receive the Distinguished Service Award of the Mining & Exploration Division of the Society for Mining, Metallurgy and Exploration at the SME Annual Meeting in Salt Lake City on March 1, 2005. The award recognizes Ron's many years of service to SME where he has served on the Geology Unit Committee, the M & E Division Executive Committee, numerous award committees, and as an SME Board Member.

▶ Kelly Cluer, exploration manager for Centerra Gold Mongolia, was selected as the Honored Geologist of Mongolia for 2004. Kelly received this award for getting the Boroo gold mine up and running, its great performance during the year, and having good prospects for a second mine to come online in the not too distant future. Sounds like some official vodka drinking sessions are in order.

Members are encouraged to keep us informed about their own career related moves and awards, and deaths of GSN colleagues. Your information needs to be received by Andrea at gsn@mines.unr.edu by the 21st of each month.

2005 MINING AND LAND RESOURCES INSTITUTE

The Nevada Landmen's Association (NLA) and American Association of Professional Landmen (AAPL) invite you to attend the 2005 Mining and Land Resources Institute. MALRI 2005 will be held on March 16-17, 2005 at the Peppermill Hotel in Reno, Nevada. Topics include mining law updates and reviews of current land and environmental issues. For more information, contact Edd Jackson, the MALRI 2005 Co-Chairman at Newmont Capital Limited. Edd can be reached at edd.jackson@newmont.com or call 775/784-8188.



www.GSN2005.org

Geological Society of Nevada Symposium 2005

**Technical Sessions, Exhibits, and Core Shack
Sunday-Wednesday, May 15-18**

Pre-Meeting Field Trips, Wednesday-Friday, May 10-13

Society of Economic Geologists Forum, Saturday, May 14

Post-Meeting Field Trips, Thursday-Saturday, May 19-21

Short Courses, Thursday-Friday, May 19-20

*John Ascuaga's Nugget Hotel
Reno/Sparks, Nevada*

Exhibitors – Showcase your company's products, services, and investment opportunities to decision makers from around the world. Reserve your booth early, either on the Web or by contacting us at exhibits@GSN2005.org.

REGISTRATION FORM
Geological Society of Nevada Symposium 2005
Window to the World

15 December 2004

John Ascuaga's Nugget Hotel, Sparks, Nevada

(Exhibits and Technical Sessions, **May 15-18**; Pre- and Post-Meeting Field Trips, Short Courses, and SEG Forum)

Please make checks payable to "GSN 2005" and mail them to GSN 2005, P.O. Box 13375, Reno, NV 89507-3375, USA. Credit card payments (VISA or MasterCard only) can be made on the Web (www.gsn2005.org) or by fax (775-323-3599). For information, see www.gsn2005.org, call 775-355-8388, or e-mail gsnsymp@unr.edu. All registrants are GSN members during the symposium and pre- and post-meeting trips and short courses.

Symposium Registration (Registrants for field trips and short courses must register in one of the following five categories.)

Early, Regular, and On-Site registrants will receive the **printed Symposium Volumes** by mail after the meeting.)

Early (GSN must receive the registration form **by February 28, 2005**), **\$250** \$ _____

Regular (between March 1 and April 30), **\$300** \$ _____

On-Site and Late (after April 30), **\$350** \$ _____

Student (must be able to show proof of student status; no Symposium Volumes), **\$125** \$ _____

Exhibits-Only (may not attend technical sessions and will not receive the Symposium Volumes, but \$ _____

have access to the exhibit hall and may attend the Big Party), \$25

Pre-Meeting Field Trips (limited to 40 per trip)

Field Trip 1-*Precious Metal Deposits of the Walker Lane and South-Central Nevada* (May 11-13), \$375 \$ _____

(Field Trip 2-cancelled)

Field Trip 3-*Sediment-Hosted Gold Deposits of the Northern Carlin Trend* (May 11-13), \$375 \$ _____

Field Trip 4-*Sediment-Hosted Gold Deposits of the Getchell District* (May 11-13), \$375 \$ _____

Society of Economic Geologists Forum on *Controversies on the Origin of World-Class Gold Deposits:*

Carlin and Witwatersrand (Saturday, May 14, at John Ascuaga's Nugget Hotel; Symposium Registration \$ _____

not required, but encouraged; limit 300 – first come, first served), **\$149** (cost for professionals) \$ _____

or \$89 (cost for students) \$ _____

Keynote Luncheon - Doug Silver (Sunday, May 15, limit 650), **\$30** \$ _____

Controversies Luncheon - Highlights from the SEG Forum (Monday, May 16, limit 650), **\$30** \$ _____

Post-Meeting Field Trips (limited to 40 per trip) **and Short Courses**

Field Trip 5-*Low Sulfidation Vein Systems in the Northern Nevada Rift* (May 19-21), \$375 \$ _____

Field Trip 6-*Sediment-Hosted Gold Deposits of the Southern Carlin Trend* (May 19-21), \$375 \$ _____

Field Trip 7-*Sediment-Hosted Gold Deposits of the Eureka-Battle Mountain Trend* (May 19-21), \$375 \$ _____

Field Trip 8-*Sediment-Hosted Gold Deposits of the Independence Range* (May 19-21), \$375 \$ _____

Field Trip 9-*Porphry Deposits of the Great Basin* (May 19-21), \$375 \$ _____

Field Trip 10-*Comstock District* (May 19-20, does not include overnight lodging), \$125 \$ _____

Short Course 1-*Mineral Resource Estimation* (May 19, minimum 15, limit 30), \$250 \$ _____

Short Course 2-*Digital Mapping* (May 19-20, minimum 12, limit 20), \$250 \$ _____

Short Course 3-*Real World Geophysics: A Window into the Ground* (May 19, limit 25), \$275/\$100 students \$ _____

Short Course 4-*Structuring a Mining Deal* (May 19-20), \$275/\$150 for students \$ _____

Pre-publication order of an extra copy of the Symposium Volumes (estimated to be two hard-bound, volumes with 1,400 pages, some in color). \$90 if picked up at the GSN office; \$102 if mailed to USA address; \$120 if mailed to non-USA address. Lower foreign mailing prices may be available on the Web. \$ _____

TOTAL \$ _____

YOUR NAME _____ TITLE _____

EMPLOYER _____

ADDRESS _____

TELEPHONE _____ E-MAIL _____

FAX _____ If paying by credit card, indicate VISA or MasterCard and provide:

CARD NUMBER _____ Expiration Date _____

Three-digit number from back of card _____ Signature _____

Guests/spouses may sign up for the exhibits-only fee, which provides access to the exhibits and to the Big Party on Tuesday evening, May 17. Please complete a separate registration form for each guest. For hotel reservations at John Ascuaga's Nugget Hotel (www.janugget.com), please call 1-800-648-1177 and use "Geology" as the code to get the group reservation rate.



**An invitation to
register for the 22nd
International
Geochemical
Exploration Symposium
(1st International**

**Applied Geochemistry Symposium),
Perth, Western Australia, September
2005**

On behalf of the Local Organising Committee, we offer a cordial invitation for you to register for the 22nd International Geochemical Exploration Symposium, which will be held in Perth, Western Australia in about nine months time, from the 19th to the 23rd September 2005 at the Sheraton Perth Hotel.

We have assembled a series of sessions, which range from discovery case histories, through new exploration techniques, exploring within and beneath the regolith, and encompassing environmental geochemistry. The latter emphasises the Association of Applied Geochemists' wider emphasis on all aspects of geochemistry related to mineral resources. There is scope within this program for both oral and poster presentations, and we also welcome offers to contribute to or attend workshops. To complement the technical aspects of the meeting, we are formulating a variety of field excursions and workshops, as well as a varied social program for registrants and their partners.

Many of you will know Perth either personally or through its reputation as a vibrant, multicultural city, with a strong infrastructure related to mining and mineral exploration, which reflects Western Australia's long and diverse mineral resources-based economy. Recognising this, several companies have agreed to sponsor this meeting, and others are taking up the opportunity to present at trade booths.

We are sure the 2005 IGES meeting in Perth will be a memorable occasion. Should you be interested in attending this meeting, please visit the website of our conference organiser at

www.promaco.com.au/conference/2005/iges/index.htm and follow the prompts to the IGES meeting. Alternatively, log onto the AAG website (www.appliedgeochemists.org) and follow the prompts to 22nd IGES. We suggest you check these websites occasionally, where new information about the meeting will be posted.

We hope to see you in Perth in September 2005.

Nigel Radford and Paul Morris
Co-Chairmen, 22nd IGES

GSN PUBLICATIONS

Field Trip Guidebook SP-40 is available for purchase. This is the guidebook from the last field trip, which was sold out. It has a great map of the land position on the central and southern Battle Mountain Trend. Price \$45.00. Buy it today.

GSN ELKO CHAPTER SYMPOSIUM: G3: RECENT ADVANCES IN THE EXPLORATION GEOSCIENCES

Dave Caldwell, *GSN Elko Chapter President*

The GSN Elko Chapter held an all day symposium on the 15th of January entitled G3: Recent Advances in the Exploration Geosciences. We had 82 participants at the event and 6 presenters covering topics ranging from cutting edge geophysics to geochemistry to remote sensing and probability statistics.

It was clear from the turn out and retention of the audience's attention throughout the day that we have struck a chord here. As an unsolicited example of the enthusiasm surrounding the symposium, here is a real testimonial from a real geologist:

"The session was one of the best I've been to in regards to the organization of the talks and their overall high quality technical content, good graphics, and good delivery - there were no clunkers, which in my experience, is pretty amazing.

*It's a great time of year to have it - I didn't talk to anyone who was missing out on an important field day. It would be great to have it again next year. Thanks to you and the other Elko GSN officers for putting it together and pulling it off."*Dan McCoy (real geologist)

We are planning to have the event again next year and welcome any comments or suggestions regarding what the membership would like to see for content. Thanks again to the presenters and to all the participants who conspired to make the day a great success!

GSN OFFICE SCHEDULE CHANGE

Starting January 31, 2005 the GSN Office will change its hours. The new hours will be 1:30 to 4:30 Monday through Friday. Stop in and say hello to Andrea Robinson, purchase some new publications for your libraries and register for the Symposium 2005 if you haven't already.

UPCOMING EVENTS

Feb. 4th - ECONOMIC GEOLOGY SEMINAR, Mackay Science Bldg, Rm 215. David John, U.S. Geological Survey's Mineral Resources Team, Hydrothermal Alteration & Epithermal Systems Produced by High Cascades Volcanoes, NW USA. Jon Price, 775/784-6691, ext 126.

Feb. 18th - ECONOMIC GEOLOGY SEMINAR, Mackay Science Bldg, Rm 215. Yardley Lecture: Glen Carter and Reginald Montgomery, Newmont. Subject: Drilling in the Mining Business. Jon Price, 775/784-6691, ext 126.

Feb. 28th-Mar. 2nd - SOCIETY FOR MINING METALLURGY, & EXPL (SME) 2005 MEETING, Salt Lake City, UT. www.smenet.org/meetings/AnnualMeeting2005/index.cfm.

Mar. 6th-9th - PROSPECTORS & DEVELOPERS ASSOCIATION OF CANADA (PDAC) 2005, Toronto, Canada. www.pdac.ca/pdac/misc/conv-info.html.

Mar. 16th-17th - NEVADA LANDMEN'S ASSOCIATION (NLA) & AMERICAN ASSOCIATION OF PROFESSIONAL LANDMEN (AAPL), 2005 Mining AND Land Resources Institute, Reno, NV. Edd Jackson, edd.jackson@newmont.com, 775/784-8188.

GEOLOGICAL SOCIETY OF NEVADA



gsn@mines.unr.edu • www.gsnv.org
Telephone (775) 323-3500 FAX (775) 323-3599
Post Office Box 13375
Reno NV 89507
USA

NON PROFIT
ORGANIZATION
U.S. POSTAGE
PAID
RENO, NV
PERMIT NO. 625



**AGNICO-EAGLE
USA LIMITED**

Mark J. Abrams
Exploration Manager

Mick Roper
Senior Geologist

Leslie L. Olmstead
Senior Geologist

Randy Robinson
Geological Technician

**SUBMITTALS
INVITED**



NEVADA CONTACT INC.
A member of AGNICO-EAGLE Group of Companies

*Nevada Contact Inc
has changed names
and logos. We are now
Agnico-Eagle (USA)
Limited.*

**GRASSROOTS
TO
DEVELOPMENT**