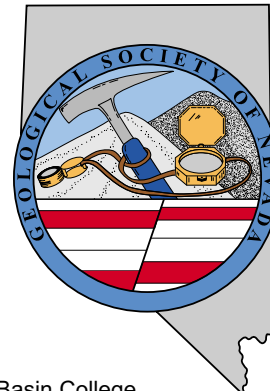


# GSN NEWSLETTER



January 2005, Vol. 19, No. 1

## PRESIDENT

**Dieter Krewedl**  
Krewedl Mineral Exploration  
dkrewedl@usamedia.tv

## SECRETARY

**Leslie Olmstead**  
Nevada Contact Inc.  
lolmstead@nevadacontact.com

## TREASURER

**Camille Prens**  
Mine Development Associates  
cami@mda.com

## MEMBERSHIP CO-CHAIRS

**Greg McN. French**  
Consulting Geologist  
GMcNFrench@aol.com

## Dave Shaddrick

Rubicon Resources Inc.  
Dshaddrick@aol.com

## PUBLICATION CO-CHAIRS

**Elizabeth A. Zbinden**  
Round Mountain Gold Corp.  
E\_Zbinden@geology.reno.nv.us

## Ruth Carraher

C&M Consultants  
RACarraher@aol.com

## OFFICE MANAGER

**Shannon Fitzpatrick**  
gsn@mines.unr.edu

## CALENDAR OF EVENTS

- Jan. 15th Saturday** ELKO CHAPTER SHORT COURSE: The Main Theater at Great Basin College, "G<sup>3</sup>: Recent Advances in the Exploration Geosciences." See page 9 for more information.
- Jan. 20th Thursday** ELKO CHAPTER MEETING: Western Folklife Center, Elko, NV. Speaker: R. W. Leonardson, "Back to the Basics at Goldstrike." Social at 6:00 pm, talk at 7:00 pm. Contact Dave Caldwell at 775/753-4396 or dcaldwell@nevadapacificgold.com.
- Jan. 21st Friday** GSN MEMBERSHIP MEETING: Speaker: Alan Branham, President of Midway Gold Corp., "Midway Project, Nye County, NV: High-Grade Gold Under Sand Dunes." Social at 6 pm, dinner at 7 pm and talk at 8 pm. Contact Shannon Fitzpatrick at 775/323-3500 or gsn@mines.unr.edu.
- Jan. 27th Thursday** SOUTHERN NEVADA CHAPTER MEETING: Lily Fong Geoscience Building, UNLV, Las Vegas, NV. Speaker: Jon Price, Director, Nevada Bureau of Mines and Geology, UNR, "Greek Geology and the Rise of Western Civilization." Social at 6:00 pm, talk at 6:30 pm. Contact Paul Bowen at 702/290-1255.
- Feb. 18th Friday** GSN MEMBERSHIP MEETING: Speaker: Scott Manske, "How to Shoot an Elephant: A Brief History of Exploration and Discovery in the Superior District, AZ." Contact Shannon Fitzpatrick at 775/323-3500 or gsn@mines.unr.edu.

GSN Newsletter is published monthly except June and July  
Geological Society of Nevada, PO Box 13375, Reno, NV 89507 USA, 775/323-3500, www.gsnv.org

## FROM THE PRESIDENT

Dieter Krewedl, *GSN President 2004-2005*



Optimistic outlooks for exploration during 2005 prevailed during two festive dinner meetings in December. The 15<sup>th</sup> annual AIPG exploration outlook dinner meeting had eight managers representing major and junior companies present their plans for next year. The common message was that 2005 will see increased exploration budgets resulting in a greater need for geologists and drill rigs in Nevada. Thanks go to Kel Buchanan and AIPG for putting together the meeting.

The GSN Christmas dinner was also a fun evening of socializing and fund raising enjoyed by a record attendance of 200 people. The large crowd came to hear our speaker Jim Gibbons, who is the only geologist in the US Congress, present his thoughts on exploration in the United States. Representative Gibbons was optimistic that there will be a

*continued on page 2*

## JANUARY MEETING SPONSOR



J-Pacific Gold

For more  
information  
please call  
1-888-236-5200.

Property submittals  
welcomed.

**J-PACIFIC  
GOLD**

**Aggressive  
Exploration  
Planned for  
Nevada's  
Cortez  
District**

**J-Pacific Gold Inc.**

1440-1166 Alberni Street,  
Vancouver, B.C. V6E 3Z3  
Toll Free: 1-888-236-5200  
Fax: (604) 684-6678  
Email: [Info@jpgold.com](mailto:Info@jpgold.com)  
Website: [www.jpgold.com](http://www.jpgold.com)

TSXV - JPN  
OTCBB - JPNJF



## News and Announcements

FROM THE PRESIDENT *continued from page 1*



window of opportunity over the next 18 months to produce meaningful mining law reform. We thank him for his support of the exploration and mining business and for helping to make our Christmas meeting such a success.

The 4<sup>th</sup> annual raffle and silent auction that preceded the Christmas dinner was again an enormous success. Round Mountain Gold Corp. donated a 20 gram crystalline gold specimen that was auctioned to the highest bidder (Dan Kappes) for \$975. A big thank you goes to everyone who donated items for the raffle and auction. See page 6 for a listing of the donors. In total, we raised \$5,594 for the GSN Foundation, which is another record. We all appreciate D.D. LaPointe, Rachel Dolbier, & Mario Desilets efforts for again making the event so tremendously successful. We also would like to extend a big thanks to Boart Longyear/Lang Exploratory Drilling for sponsoring the December meeting.

The Elko Chapter of the GSN is organizing a short course entitled “G<sup>3</sup>: Recent Advances in the Exploration Geosciences” to be held on Saturday, January 15, 2005. The focus will be a review of the newest techniques in mineral exploration geochemistry and geophysics through presentations by leaders in those fields. The all day short course will be held at the Great Basin College in Elko. See page 9 for more details. Our thanks go to Dave Caldwell and the GSN Elko Chapter for organizing this event.

We will return to our technical format during our next membership meeting scheduled for January 21<sup>st</sup>. Alan Branham will give us an update on the Midway gold project in Nye County. Many thanks go to **J-Pacific Gold Inc.** for sponsoring the social hour during the January meeting. Members of the GSN Executive Committee will also be canvassing members during the social hour for comments and suggestions on how we can improve the Society.

I look forward to an exciting year for mineral exploration in Nevada and I hope to see you at our next membership meeting.

## The GSN Foundation wishes to thank the following donors:

- |                       |                   |
|-----------------------|-------------------|
| Keith Blair           | Bill Dubrin       |
| Tench Page            | Hendrik van Oss   |
| Edward MacKevett, Jr. | Kim Roberts       |
| Harry Cook            | Susie Mason       |
| Kris Alvarez          | David Mathewson   |
| Maureen Leshendok     | Thomas Carpenter  |
| William Wilson        | Ann Carpenter     |
| John Lee Carroll      | Paul Renken       |
| Keith Bettles         | Christopher Magee |
| WT Cohan              | Peter Rowley      |
| Shea Clark Smith      |                   |

## GSN 2005 SYMPOSIUM “Window to the World”



New Year Resolutions have been made and it is now 20 weeks to the 2005 Symposium. Many manuscripts are being compiled; field trips to exciting locations are planned; and great poster and core shack exhibits are being arranged. The oral presentations will be excellent with large screens and a great sound system. If you want to see more detail on the symposium, go to the website and see what is being offered and then sign up for the program. The Symposium is expecting a record turnout for this once every five year event. It is important that if you wish to attend any of the Field Trips or Short Courses, or be an Exhibitor at this world-class meeting that you register soon. If you have questions, contact Brenda Estay at the Symposium office, 775/355-8388. The Symposium office is located at the Gold Summit office on Caughlin Ranch Parkway. To register for the Symposium, Exhibits, Short Courses and Field Trips, please go to the Symposium Website – [www.gsn2005.org](http://www.gsn2005.org).

***Thanks to Boart Longyear/Lang Exploratory Drilling  
for hosting the December meeting.***

# *GSN January 21, 2005 Membership Meeting*

---

**Date:** Friday, January 21, 2005

**Time:** Social-6:00, Dinner-7:00, Meeting-8:00

**Reservations:** 775/323-3500; fax 323-3599,  
e-mail [gsn@mines.unr.edu](mailto:gsn@mines.unr.edu)

**Deadline:** Reserve by 11 am Thursday, January 20<sup>th</sup>

**Location:** Elks Lodge, 597 Kumle Lane, Reno, NV

**Directions:** Across (W) from the Reno-Sparks Convention Center (S Virginia St), behind the Les Schwab Tire Center

**Speaker/topic:** Alan Branham, Midway Gold Corporation  
See abstract below.

---

## **MIDWAY PROJECT, NYE COUNTY, NEVADA: HIGH-GRADE GOLD UNDER SAND DUNES**

Alan Branham, Midway Gold Corporation

Midway Gold Corporation has been exploring the Midway project, located 15 miles northeast of Tonopah, Nevada for three years. To date a large, quartz adularia hydrothermal system enriched with bonanza grade gold has been discovered beneath shallow sand dunes adjacent to State Highway 376. Numerous spectacular gold intercepts have been discovered with grades as high as 90 ounces/ton.

The gold is hosted in 24 Ma rhyolite volcanic tuff and tuffaceous sandstone and in the underlying Ordovician Palmetto argillite and hornfels. Numerous felsic dikes intrude the older sediments and appear to dome the argillite. The north side of the dome is cut by dextral strike-slip, northwest striking, high angle faults called the Rye Patch and Discovery Faults. The better gold grades occur in intensely silica and adularia altered tuffs at or above the Tertiary-Ordovician unconformity within high angle veins that contain bladed quartz after calcite textures. Both northwest and northeast striking high angle faults host high-grade banded quartz and clay altered adularia rich veins in the Tertiary and Ordovician rocks. The entire rock package is covered by a thin veneer of sand 20 to 60 feet thick.

Various geophysical and geochemical exploration techniques have been applied to the project with differing degrees of success. The most successful techniques in mapping the alteration are CSAMT and detailed airborne magnetic surveys. Airborne radiometric surveys measuring potassic alteration identified a large altered zone associated with adularia on the project. These various techniques will be reviewed and summarized. Detailed geologic mapping coupled with oriented core helped identify vein orientations and structures for drill targeting.

A brief review of the Spring Valley, Nevada project may also be presented, in which large, rhyolite volcanic breccia pipes and structures host disseminated and high grade gold in a new discovery, located north of the Rochester District, Pershing Co., Nevada. This new deposit is also totally covered with younger sand and gravel.

---

Alan Branham is the President and CEO of Midway Gold Corporation. He worked 21 years with Newmont Mining in North and Central America from Circle, Alaska to Northern Brazil. The last ten years with Newmont were spent exploring in the Great Basin and along the Carlin Trend. Alan graduated from Stanford University in 1982 with a Bachelor of Science degree in Geology and from Washington State University in 1987 with Master of Science degree in Economic Geology.

**2005**

*Happy New Year  
to our GSN members and friends*

# GORDON RESEARCH CONFERENCE ON INORGANIC GEOCHEMISTRY AND ORE DEPOSITS

**Proctor Academy  
Andover, New Hampshire  
July 31 – August 5, 2005**

The Gordon Research Conference on Inorganic Geochemistry traditionally addresses the geochemistry of metal-rich systems, and has been held every three to four years over a period of 36 years. The meeting serves as one of the premier conferences for international scientists with differing levels of experience in ore deposit research. A major theme of the conference is to promote increased communication and collaboration between industry, academia, and government. The next Gordon Research Conference will be held at Proctor Academy in Andover, New Hampshire, July 31 - August 5, 2005 and the organizers are seeking expressions of interest from those who wish to participate. Students are encouraged to attend and subsidies for students and junior level participants are anticipated, particularly for those presenting posters. We also seek the participation of women and members of minority groups.

The theme of this 5-day conference is *"Metals in ore-forming systems: Sources, transport, and deposition."* The focus of the meeting is on ore-related processes, which will highlight linkages between factors involved in the concentration of metals in the earth's crust and the resultant economic beneficiation of ore. The meeting will be interdisciplinary, with invited speakers who are experts in the fields of biogeochemistry, tectonics, structural geology, experimental geochemistry, and numerical modeling. A preliminary speakers program and conference details are available at the website:

[www.grc.uri.edu/programs/2005/inorgeo.htm](http://www.grc.uri.edu/programs/2005/inorgeo.htm).

To increase industry involvement, the organizers have included the opinions of corporate scientists to create a program that will appeal to industry as well as academic researchers. The introductory session will outline some of the problems that corporate researchers recognize from their field-based work, and set the tone for discussions throughout the meeting. During the final overview session, a group of scientists from industry and academia will review key discussion topics, highlight important ore-forming processes, and outline critical topics for future research.

The 2005 Gordon Conference organizers are Jean Cline ([cline@ccmail.nevada.edu](mailto:cline@ccmail.nevada.edu)), Steve Garwin ([steve.garwin@geoinformex.com](mailto:steve.garwin@geoinformex.com)) and Chris Heinrich ([heinrich@erdw.ethz.ch](mailto:heinrich@erdw.ethz.ch)). Those who wish to participate should contact Britt Meyer by e-mail at [meyer@erdw.ethz.ch](mailto:meyer@erdw.ethz.ch). Poster space will be available and those who wish to present a poster are invited to send a brief abstract together with your expression of interest. Students and other participants who wish to apply for funding to attend the meeting should contact Jean Cline.

## PAID ADVERTISEMENTS



**JOSEPH R. ANZMAN**

*Exploration Geophysicist*

- consulting
- interpretation
- project management
- geophysical surveys
- domestic & foreign

P.O. Box 370526  
Denver, Colorado 80237  
303-337-4559  
telephone/fax

## Petrographic and Ore Microscopy Services

for applications in the following areas:

- Base and Precious Metals
- Mineral Exploration
- Process Mineralogy
- Industrial Minerals
- Geological Mapping
- Forensic Geology



P.O. Box 10080  
American Canyon, CA 94503  
Phone: 707-553-2772  
E-Mail: [sfmicro@earthlink.net](mailto:sfmicro@earthlink.net)

**Schurer & Fuchs**

**Edward Jones**

**Kent S. Samuelson**

Investment Representative

18116 Wedge Parkway  
Reno, NV 89511  
Bus. 775-852-0909 Toll-free fax 888-690-9171  
Toll-free 888-461-3214  
[www.edwardjones.com](http://www.edwardjones.com)

**Serving Individual Investors Since 1871**

# Sample Bags

HUGE INVENTORY



LOW, LOW PRICES

**Legend, Inc.**

140 Manuel • Reno, Nevada 89502 • 775-786-3003  
[www.legend-reno.com](http://www.legend-reno.com)

Fire Assay  
ICP - OES  
ICP - MS  
AAS  
Custom Preparation  
Bullion Analyses  
BLEG

**Corporate Office**  
1500 Glendale Avenue  
Sparks, NV U.S.A. 89431-5902  
Telephone (775) 356-0606  
Fax (775) 356-1413

**Elko Office**  
2320 Last Chance Road  
Elko, NV U.S.A. 89801-4852  
Telephone/Fax (775) 738-9100

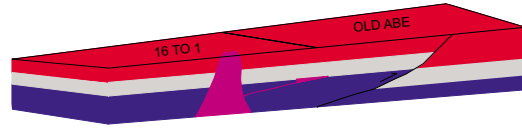
E-mail: AALADMIN@aallabs.net  
Website: www.aallabs.com

**American  
Assay &  
Environmental  
Laboratories**



G.I.S. Land Services

**Greg Ekins M.S. R.L.P. #32306** President  
Mineral Landman - Computer Draftsman  
"From Courthouse Records to Final Map"



AutoCad - ArcView - Mapinfo  
Geologic, GeoChem and Land Status Maps  
www.gislandservices.com

E: greg@gislandservices.com  
P: 775-746-8803 F: 775-746-8802

6635 Broadridge Ct.  
Reno, NV 89523

**MINERAL EXPLORATION SERVICES**

**SOIL SAMPLING  
CLAIMSTAKING  
PROPERTY EVALUATION  
MINE HAZARD FENCING**

5655 Riggins Ct., #15, Reno, NV 89502  
Tel: (775) 954-1082 Fax: (775) 829-6882  
email: day@mineralexploration.com

**WE CAN HELP!**

- Environmental and exploration support services
- Celebrating 40 years of service to the mining industry
- Experience in Mexico / Canada / Alaska



**NORTH AMERICAN EXPLORATION INC.**  
**NORTH AMERICAN MINE SERVICES INC.**  
GEOLOGY | GEOPHYSICS | GEOCHEMISTRY  
HYDROLOGY | ENVIRONMENTAL SERVICES

472 North Main • Kaysville, Utah 84037 • Phone (801) 546-6453 Fax (801) 546-0884  
nae@nae-xploration.com



**Enviroscientists, Inc.**

*Reliable Service for All Your Environmental Needs*

4600 Kietzke Lane, Suite C129, Reno, Nevada 89502  
Phone: (775) 826-8822 Fax: (775) 826-8857

**Richard DeLong**  
President

www.enviroincus.com

**Opal Adams**  
Vice President

**ALS Chemex**

*The World's Leading Mineral Exploration  
& Minesite Laboratory Group for over 37 Years*

Wherever you are, we offer . . .  
complete Lab Set Up & Mineral Analysis

**Over 40 laboratories & offices in North &  
South America, Africa & S.E. Asia**



**Reno**  
Tel: 775-356-5395  
Fax: 775-355-0179

**Elko**  
775-738-2054  
775-738-1728

**Fairbanks**  
907-452-2188  
907-452-2227

*Jo Beth Allen*  
**Professional Graphics**

CAD Drafting/Digitizing/Scanning  
High Resolution Presentation Graphics  
Plotting/Printing  
Geologist

1055 Joshua Drive  
Reno, Nevada 89509

Phone: 775-324-7960  
Fax: 775-324-7583

jobeth@yellowsub.net



**Carlin Trend Mining  
Supplies & Service**

369 5th St., Elko, NV 89801  
(775) 778-0668, Fax: (775) 778-0687, carlintrend@frontiernet.net

Geological Consulting - Claim Staking - Soil Sampling  
Mineral Surveys - Mine Hazard Fencing  
Geology & Drafting Supplies - AutoCad & GIS  
Temporary Employees in All Fields

## GSN FOUNDATION UPDATE

A word of thanks to all who donated - treasures, objects, time, effort and of course to all of you who bought the raffle tickets and tried your luck!

This year's Christmas Raffle was a huge success, and we are grateful to all of you who helped to make this such a fine event. Special thanks are extended to D.D. LaPointe and Rachel Dolbier for their fine dedication ... they are the reason this continues to be so much fun, and such a good fundraiser for the Foundation Programs.

Merry Christmas wishes, and we will see you in the New Year, when we will be able to 'quantify' how successful we were!

Ann Carpenter  
*GSN Foundation Chairman*

Opal Adams & Rich DeLong  
April Barber  
Barrick Goldstrike  
Tom Callicrate  
CGS  
Mark Coolbaugh  
Tom Cordova  
Mario Desilets  
Marty Dennis & Eklund Drilling  
Enviroscientists, Inc.  
Greg French  
Geoprime Minerals  
Lew Gustafson  
Lance Taylor & Geotemps  
Mark Stock & Global Hydrologic  
Services, Inc.  
Great Basin Brewing Company  
Peter Hahn  
Chris Henry & Jan Sloan  
Fred Holabird & Holabird Associates

Jack Hursh  
Kappes, Cassiday & Associates  
Kinross Gold Inc.  
Mark Lewis & Legend, Inc.  
Maureen Leshendok  
Walt Lombardo  
Roger MacPherson  
Scott Werschky & Miner's Lunchbox  
Nevada Bureau of Mines & Geology  
Nevada Division of Minerals  
Nevada Mining Association  
John Wood & Newcrest  
Newmont, the Gold Company  
Northwest Mining Association  
Oakman's  
Cami & Neil Prens  
Jon Price  
Neville Rhoden  
Bob Kellie & Rio Tinto-U.S. Borax  
Round Mountain Gold

Dan & Maureen Rovig  
Eric & Laura Ruud  
Dave Shaddrick  
Stone Age Quarry  
Eric & Debra Struhsacker  
Joe Tingley  
Dave Varabioff - [www.goldbay.com](http://www.goldbay.com)  
W.M. Keck Museum  
Dave Waisman & Crystals  
of the Earth  
Jess Wellman  
Western Goldfields, Inc.



## GSN IN SPOKANE

We had a successful week — not to mention a good time — at the Northwest Mining Association meeting December 7<sup>th</sup>-10<sup>th</sup>, in Spokane, WA. GSN, the State of Nevada, the Nevada Bureau of Mines and Geology, and University of Nevada Mackay School joined forces to make a multi-booth Nevada cluster. Twenty members signed up, many of them old friends who had wandered off and we're glad to have them back again! Welcome, too, to the new members who are just getting started with GSN!

Thank you to the following people who contributed time and energy at the booth:

April Barber	Dean Heitt	Jon Price
Jonathan Brown	Joe Laravie	Dave Shaddrick
Ruth Carraher	Beth Price	Elizabeth Zbinden

Also thank you to Opal Adams and Leslie Olmstead who designed and produced graphics for the booth display. The new booth looks sharp! We first used it at the National Mining Association meeting in September.

# ACTIVITY UPDATE

Mike Brady, November 2004  
www.activityupdate.com

## NEVADA

Placer Dome Inc. announced that it acquired an option to earn a 60% interest in the Red Hill Property from Miranda Gold Corp. for \$549,875 cash and \$2,000,000 in exploration expenditures over 4 years.

Press Release: October 28

Placer Dome Inc.(60%) announced that recent drill hole results at the Cortez Hills Project include 152 meters @ 0.788 opt Au; 88 meters @ 0.507 opt Au; 104 meters @ 0.431 opt Au; 27 meters @ 0.375 opt Au; 61 meters @ 0.114 opt Au and 125 meters @ 1.040 opt Au. (reserve = 21,230,000 tons @ 0.179 opt Au proven and 25,960,000 tons @ 0.141 opt Au probable) N.M.: October 15

Rio Fortuna Exploration Corp. announced that recent drill results at the Baxter Project include 51.8-57.9 meters @ 0.102 opt Au (B04006) and 47.2-57.9 meters @ 0.059 opt Au (B04007). Press Release: November 18

Klondex Minerals Ltd. announced that recent drill results at the Fire Creek Project include 10 feet @ 0.404 opt Au; 10 feet @ 0.334 opt Au; 20 feet @ 0.421 opt Au and 25 feet @ 2.594 opt Au all at a depth exceeding 1,000 feet. (resource = 450,000 tons @ 0.060 opt Au)

N.M.: October 22

Lincoln Gold Corp. announced that it terminated its interest in the Hercules Project of Miranda Gold Corp. due to discouraging exploration results.

Press Release: November 2

Miranda Gold Corp. announced that it terminated its interest in the Hercules Property due to discouraging exploration results.

Press Release: November 2

Pacific Rim Mining Corp.(49%) and Kennecott Minerals Inc.(51%) announced that they signed an agreement with Nevada Resource Recovery Group LLC for Nevada Resource to purchase the Denton-Rawhide open pits to be used as a landfill for undisclosed terms.

Press Release: November 14

Queenstake Resources Ltd. announced that recent underground drill results at the Jerritt Canyon/Smith Mine Project include 195-210 feet @ 0.290 opt Au (6790-L8); 170-200 feet @ 0.280 opt Au (6790-M9) and 235-265 feet @ 0.597 opt Au (6790-M9). (reserve @ Jerritt Canyon = 2,563,000 tons @ 0.303 opt Au proven+probable)

Press Release: November 15

Queenstake Resources Ltd. announced that recent drill results at the Jerritt Canyon/Mahala Project include 0-10 feet @ 0.491 opt Au (LX-503); 585-600 feet @ 0.266 opt Au

(LX-508); 435-450 feet @ 0.375 opt Au (LX-509); 275-295 feet @ 0.454 opt Au (LX-513) and 400-425 feet @ 0.319 opt Au (LX-514). (reserve @ Jerritt Canyon = 2,563,000 tons @ 0.303 opt Au proven+probable)

Press Release: November 15

Queenstake Resources Ltd. announced that recent drill results at the Jerritt Canyon/SSX Mine Project include 75-108.5 feet @ 0.649 opt Au (SX-889); 210-262 feet @ 0.301 opt Au (SX-891); 217-240 feet @ 0.360 opt Au (SX-892); 62.5-80 feet @ 0.476 opt Au (SX-893) and 80-100 feet @ 0.270 opt Au (SX-897). (reserve @ Jerritt Canyon = 2,563,000 tons @ 0.303 opt Au proven+probable)

Press Release: November 15

Metallic Ventures Inc. announced that it purchased four sections of fee lands within the boundaries of the Converse Project from Nevada Land and Resource Co. for undisclosed terms. (resource = 262,350,000 tons @ 0.015 opt Au measured+indicated) Press Release: November 22

## 2005 MINING AND LAND RESOURCES INSTITUTE

The Nevada Landmen's Association (NLA) and American Association of Professional Landmen (AAPL) invite you to attend the 2005 Mining and Land Resources Institute. MALRI 2005 will be held on March 16-17, 2005 at the Peppermill Hotel in Reno, NV. Topics include mining law updates and reviews of current land and environmental issues. For more information, contact Edd Jackson, the MALRI 2005 Co-Chairman at Newmont Capital Limited. Edd can be reached at edd.jackson@newmont.com or call 775/784-8188.

### GSN Newsletter Monthly Advertising Rates

Business card size (3 1/2 x 2")	\$ 50.00
Quarter page (3 1/2 x 4 3/4")	150.00
Half page (4 3/4 x 7 1/2")	300.00
Classified ads \$10/line (up to business card size)	

For an advertising form, call the GSN office at 775/323-3500 or fax 323-3599. Digital or text ads must be received by the 20th of the month to appear in the following month's newsletter.

Advertising Guidelines: submit digital files exported as a EPS, TIFF, PICT, or PDF with preview. Payment must be received by the 20th of the month in order to be placed in the following month's newsletter.

# GSN MEMBERS' PERSONAL NOTES & NEWS

## Career Related Moves

- ▶ Paul Renken has been elected to Board Committee of the London Association of Mining Analysts. Check out [www.ama.org.uk](http://www.ama.org.uk) <<http://www.ama.org.uk>> for more information.
- ▶ Jim Helgeson is Vice President of Taranis Resources, Inc., which recently went public and has three exploration properties in Nevada and one in Finland. More information concerning Taranis and the personnel involved can be found at [www.taranis.us](http://www.taranis.us).
- ▶ Neil Phillips has stepped down after nearly four years as CSIRO's Chief of Exploration and Mining in Melbourne to focus on their exploration R&D efforts out of Perth, Western Australia. Neil is concentrating on gold research including preparation for the SEG Witwatersrand gold debate at the GSN 2005 Symposium in May.

## Awards and Related Items

- ▶ Congratulations to NWMA Executive Director Laura Skaer for recently receiving an award from the U.S. Forest Service for her outstanding leadership and cooperation in representing the mining industry with the Forest Service.
- ▶ The Lyle Taylor Starter's Award went to Eric Cheney, Associate Professor of Geology, University of Washington and a NWMA Trustee. The Lyle Taylor Starter's Award was founded by NWMA member and Spokane resident Frank Blair in 1977 and was recently renamed to honor former NWMA president, the late Lyle Taylor, one of the mining industry's and NWMA's greatest supporters.
- ▶ Lance Taylor joined the Board of Trustees for the NWMA, and Lance is on the advisory board for Mackay.

## Deaths

### H. Walter Schull, 1934 - 2004

Herman Walter Schull III passed away quietly at his home after a lengthy battle with prostate cancer on November 5, 2004. Walter was 69 years young.

Walter Schull was a past president of GSN (1980) and a widely known and respected exploration geologist within the mineral industry. Walter was both a learner and a teacher in the earth science field and will be sadly missed by all of his colleagues and students throughout the world. In addition to his love of geology he had a constant quest for knowledge in many areas of life. Walter was an avid

snow skier, he also liked water skiing, tennis and bike riding. He was always in pursuit of better personal fitness.

Walter began his world travels as a son of a military officer, he grew up moving from Europe to South America to the United States, finally settling in New York for his college years. In the 1960s Walter attended Columbia University and received his PhD in Economic Geology in 1971. During the time between earning degrees Walter worked as a carpenter and as a geologist in Haiti and Costa Rica. It was also during this period that he was bitten by the "Warren Miller bug" and spent several seasons skiing at Vail, Colorado.

Walter first worked in Nevada during 1965 completing regional gold exploration with Manning W. (Bill) Cox. After leaving Columbia he began employment with American Selco (Selection Trust) in 1973 exploring for base and precious metal deposits in the western US. Walter continued to work for Amselco (BP Minerals) until 1985 devoting most of his efforts toward gold exploration in North America. Consulting contracts from 1986 through 1996 consisted of large blocks of time devoted to Nevada gold deposits, and precious metals deposits in Mexico and Peru. Walter completed a two-year employment contract the USGS in Saudi Arabia during 1992-94. Wherever he went in the world Walter always made new friends and became a mentor to many young geologists. He will live forever in the minds of many.

Walter is survived by his brother Gunner, loving wife Heidi, son Rafael, and two grandchildren. Heidi was always at Walter's side while they were doing battle with illness, she provided much needed physical and spiritual support.

## UPCOMING EVENTS

**Jan. 19<sup>th</sup>-21<sup>st</sup>** - 2005 RURAL PLANNING AND NATURAL RESOURCES CONF, Nevada Division of State Lands, Tonopah Conv Center, Tonopah, NV. Clint Wertz, [cwertz@lands.nv.gov](mailto:cwertz@lands.nv.gov) or 775/687-4364 ext 236. [www.lands.nv.gov](http://www.lands.nv.gov), <<http://www.lands.nv.gov>>.

**Jan. 24<sup>th</sup>-27<sup>th</sup>** - BCYCM-MINERAL EXPLORATION ROUNDUP 2005, Vancouver, BC. [www.chamberofmines.bc.ca/eventcalendar](http://www.chamberofmines.bc.ca/eventcalendar).

**Feb. 18<sup>th</sup>** - GSN MEMBERSHIP MEETING: Speaker: Scott Manske, "How to shoot an elephant: A brief history of exploration and discovery in the Superior District, AZ." 775/323-3500 or [gsn@mines.unr.edu](mailto:gsn@mines.unr.edu).

**Feb. 28<sup>th</sup>-Mar. 2<sup>nd</sup>** - SOCIETY FOR MINING METALLURGY, & EXPL (SME) 2005 MEETING, Salt Lake City, UT. [www.smenet.org/meetings/AnnualMeeting2005/index.cfm](http://www.smenet.org/meetings/AnnualMeeting2005/index.cfm).

**Mar. 6<sup>th</sup>-9<sup>th</sup>** - PROSPECTORS & DEVELOPERS ASSOCIATION OF CANADA (PDAC) 2005, Toronto, Canada. [www.pdac.ca/pdac/misc/conv-info.html](http://www.pdac.ca/pdac/misc/conv-info.html).

**Mar. 16<sup>th</sup>-17<sup>th</sup>** - NEVADA LANDMEN'S ASSOCIATION (NLA) & AMERICAN ASSOCIATION OF PROFESSIONAL LANDMEN (AAPL), 2005 Mining and Land Resources Institute, Reno, NV. Edd Jackson, [edd.jackson@newmont.com](mailto:edd.jackson@newmont.com), 775/784-8188.

Members are encouraged to keep us informed about their own career related moves and awards, and deaths of GSN colleagues. Your information needs to be received by Shannon at [gsn@mines.unr.edu](mailto:gsn@mines.unr.edu) by the 21<sup>st</sup> of each month.



# G<sup>3</sup>: RECENT ADVANCES IN THE EXPLORATION GEOSCIENCES

## A Short Course Organized by the Geologic Society of Nevada Elko Chapter

Exploration and discovery rely fundamentally on the three main branches of geoscience: Geology, Geochemistry and Geophysics. Together, these disciplines can be thought of as three legs on a stool. If we are successful in integrating these three legs well, we form a stable platform on which to build a profitable pipeline for discovery. If we ignore any one of the legs, this platform becomes inherently less stable, and success in discovery more precarious.

This short course was designed to bring together leaders in these fields to discuss some of the new and cutting edge exploration techniques that have been developed for mineral exploration. The focus of the short course will be on the Geochemistry and Geophysics legs of our exploration stool, and how they dovetail with the third leg (Geology) to form a holistic system that improves our ability to identify prospective areas for exploration, and more importantly, that helps the average project geologist guide the string of drill-steel to target. In other words, we will focus on how these 2 G's come together with the field geologist's observations to make discovery.

The course will be presented in two sessions with ample time for questions and discussion. The aim is to keep the presentations as interactive as possible, and for both presenters and participants to walk away having learned something.

We will be asking for a small registration fee of \$20 payable at the door to help offset some of the costs of hosting this event. Registration will be held at the venue from 9:00 to 9:30. The first talk will begin at 9:30 in the Theater at the Great Basin College and the morning session will focus on Geophysics. We will break for a lunch buffet at Café-X from 1:00 to 2:30 when we will return for the afternoon session focusing on Geochemistry. The course will be over by ~6:00 and can be continued at the Stray Dog, Jack's Clifton wine bar or over dinner for those who want to keep the discussion going!

**When:** Saturday, January 15<sup>th</sup>, 2005. (9:00 to 6:00, lunch and beverages to be provided on site)

**Where:** The Main Theater at Great Basin College

**Registration:** Pre-registration is requested to help us plan for catering the event (please send e-mail confirmation to David Caldwell (dcaldwell@nevadapacificgold.com)).

**Fees:** A \$20 registration fee will be charged for this event. It can be paid via snail mail with checks payable to GSN, P.O. Box 2591, Elko NV 89803, or by cash or check at the door the day of the event.

### Speakers

**Bill Doerner**, Quantec Geosciences, Ltd, *The Applications of New Geophysical Technology to Deep Sub-Surface Imaging*

**John Mims**, Director of Sales, Bell Geospace Inc., *Airborne Full Tensor Gravity Gradiometry*

**Hans Rasmussen**, Chief Geophysicist, White Knight Gold (US) Inc, *Data Integration for Target Generation in the Great Basin*

**Stewart M. Hamilton**, Ontario Geological Survey, *The theory of reduced chimneys and electrochemical transport over oxidizable geological features*

**Patrick Highsmith**, Newmont Mining Corporation, *A Review of Soil Gas Geochemistry for Exploration through Exotic Overburden*

**Richard Bedell**, Vice President of Exploration, AuEx, Inc., *Remote Sensing, GIS and Integrated Ore Vectoring Techniques*

GSN wishes to express its deepest gratitude for the financial support of the following sponsors in helping to make this event possible:

**Barrick**  
Boart Longyear Co./Lang Exploratory Drilling

**Conner's Drilling**  
Dynatec Drilling, Inc.

**Newmont**  
Placer Dome

### Thank You!

---

**For more information or suggestions please contact one of your crepuscular officers:**

President: David Caldwell - dcaldwell@nevadapacificgold.com

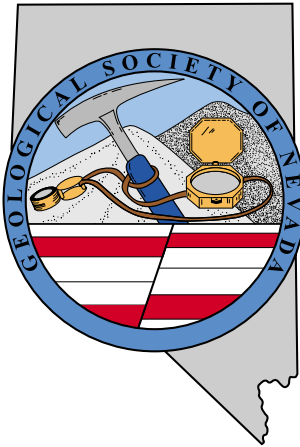
Vice President: John Watson - jwatson@bgmi.com

Treasurer: Peggy Young - pyoung@jerritt.com

Secretary: Stacy Saari - Stacy.Saari@newmont.com

Membership Chairman - Jay Olcott - jolcott@bgmi.com

GSN Elko Chapter Foundation Chairman - Steve Kulinski - skulinski@bgmi.com



# GEOLOGICAL SOCIETY OF NEVADA

P.O. Box 13375  
 Reno, NV 89507 USA  
 Phone (775) 323-3500 • Fax (775) 323-3599  
 gsn@mines.unr.edu • www.gsnv.org

Offices are located on the University of Nevada, Reno Campus  
 Laxalt Mineral Research Center, Room 266

## Information About the Geological Society of Nevada

The Geological Society of Nevada (GSN) is a non-profit scientific society whose principal mission is to promote the advancement of the geological sciences, especially as they relate to Nevada. The Society encourages the dissemination of scientific and practical knowledge through semiformal presentations, field trips and symposia as well as by publishing the literature resulting from these activities. The Society has developed a secondary mission, through the GSN Foundation, of funding a number of earth science related charitable programs, including grants for K-12 field trips, university scholarships and grants for geological mapping.

Currently there are about 800 members in the GSN. The majority are based in Nevada but members live throughout the United States and in a number of foreign countries. The Society is made up of a broad spectrum of individuals interested in the earth sciences and the natural resource industries. This includes geologists, geophysicists, geochemists, engineers, prospectors, educators and students as well as associated advisors and suppliers. Students are welcomed and encouraged to join and participate in the Society's activities.

The GSN holds dinner meetings, in Reno, on the third Friday of each month from October through May. Each meeting is highlighted by semiformal presentations by leading scientists from industry, academia and government. Abstracts of these talks are published in the monthly newsletter and in the membership directory. The membership directory is published annually and is a handy source of names, addresses, phone numbers and email addresses of individuals, companies, government agencies and service providers involved with the earth sciences.

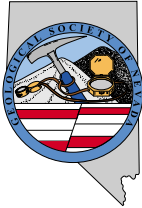
The Society organizes two field trips annually, providing an opportunity for members to learn about the geology and ore deposits of Nevada and surrounding areas. Each of these field trips is documented in a Special Publication which provides detailed technical reports, road logs, maps and photos for the areas visited.

Every five years GSN sponsors a symposium which draws scientists from all over the world to share the results of their work and learn about the work of others. These meetings include a full slate of technical sessions, pre- and post-meeting field trips and a trade show. The symposia have been strongly attended and have gained an international reputation for excellence. Proceedings volumes and field trip guidebooks have been published from these symposia. These volumes have won awards for their quality and, taken together, are considered one of the most extensive and authoritative bodies of literature in the world on the geology and ore deposits of the Great Basin and the American Cordillera. The next symposium is scheduled for May of 2005.

The Society has three active subchapters: Elko, Southern Nevada, and Winnemucca. These subchapters also hold regularly scheduled meetings, conduct field trips and hold occasional symposia on specific geologic topics.

The secondary philanthropic mission of the GSN is funded by the newly formed GSN Foundation, a 501(c)(3) public charity. The Foundation derives funding from tax-deductible donations, various fundraisers and grants from the GSN. Each year, through the GSN Education Committee, the Foundation contributes thousands of dollars toward transportation costs for earth science related, K-12 school field trips. The Education Committee also organizes a speakers bureau and helps with judging of K-12 science fairs. The GSN Foundation also provides funds for scholarships and library grants at UNR and UNLV as well as geological mapping grants through the Nevada Bureau of Mines and Geology.

The GSN has an active social calendar that provides opportunities for members to socialize, network, exchange ideas and generally enjoy themselves. In addition to the monthly meetings and semiannual field trips, the GSN holds a spring golf tournament and a fall picnic.



# GEOLOGICAL SOCIETY OF NEVADA

P.O. Box 13375, Reno, NV 89507 USA

Phone (775) 323-3500 • Fax (775) 323-3599 • gsn@mines.unr.edu • www.gsnv.org

The Geological Society of Nevada (GSN) is a non-profit, educational organization whose principal objective is to promote the advancement of geological sciences, especially as they relate to Nevada. GSN supports the dissemination of information through meetings, field trips, publications and academic endeavors. Membership is open to geologists, geophysicists, geochemists, engineers, educators, students, prospectors or anyone else with an interest in the geological sciences and/or the goals of the GSN.

The GSN membership year begins in September. Annual dues of \$30.00 (\$15.00 for full time students) are due in the fall. The GSN sponsors a Field Trip in the Fall and one in the Spring of each year. Monthly meetings are held on the third Friday of each month, October through May. No formal meetings are currently held during the summer field season. The following are sanctioned Chapters of the Geological Society of Nevada: Elko Chapter, based in Elko; Southern Nevada Chapter, based in Las Vegas, and the Winnemucca Chapter, based in Winnemucca. Additional dues to these Chapters are \$5.00 annually.

Please remember the GSN Foundation when renewing. Foundation dollars are used for the Kindergarten through 12<sup>th</sup> grade Field Trip Grant Program, Nevada Mapping Grants and University of Nevada scholarships.

## GEOLOGICAL SOCIETY OF NEVADA MEMBERSHIP APPLICATION/RENEWAL

DATE \_\_\_\_\_

NAME: \_\_\_\_\_ POSITION/TITLE \_\_\_\_\_

CONSULTANT  COMPANY NAME: \_\_\_\_\_

STUDENT  UNIVERSITY: \_\_\_\_\_

ADDRESS: \_\_\_\_\_

CITY: \_\_\_\_\_ STATE/PROVINCE: \_\_\_\_\_

ZIP: \_\_\_\_\_ COUNTRY: \_\_\_\_\_

PHONE: WORK \_\_\_\_\_ FAX \_\_\_\_\_

CELL \_\_\_\_\_ RESIDENCE \_\_\_\_\_

E-MAIL: \_\_\_\_\_ WEB SITE: \_\_\_\_\_

WOULD YOU LIKE TO HAVE AN ASTERISK BY YOUR NAME IN THE DIRECTORY INDICATING YOU ARE AVAILABLE FOR CONSULTING?

I authorize GSN to send to me, via email: GSN announcements, publication updates, employment opportunities, etc.

Yes   
No

Regular Membership Dues - email newsletter \$30.00  Honorary \$ \_\_\_\_\_

Regular Membership Dues - hardcopy newsletter via postal service \$35.00  Honorary \_\_\_\_\_

International Membership Dues - email newsletter only \$30.00 \_\_\_\_\_

International Membership Dues - hardcopy newsletter via postal service \$45.00 \_\_\_\_\_

Student Membership Dues - email newsletter only \$15.00 \_\_\_\_\_

### ADDITIONAL DUES

I wish to be a member of the Elko Chapter \$5.00 \_\_\_\_\_

I wish to be a member of the Southern Nevada Chapter \$5.00 \_\_\_\_\_

I wish to be a member of the Winnemucca Chapter \$5.00 \_\_\_\_\_

### GSN FOUNDATION

I wish to donate to the GSN Foundation

(Donated funds will be used for unrestricted grants and scholarships unless otherwise specified \_\_\_\_\_.)

**TOTAL DUE \$ \_\_\_\_\_**

Payment:  Check # \_\_\_\_\_  Cash  Visa  MC Card # \_\_\_\_\_

Exp. Date \_\_\_\_\_ Signature (as it appears on card) \_\_\_\_\_

**Return with payment to: Geological Society of Nevada, P.O. Box 13375, Reno, NV 89507  
Fax to 775/323-3599, email gsn@mines.unr.edu**

# GEOLOGICAL SOCIETY OF NEVADA



gsn@mines.unr.edu • www.gsnv.org  
Telephone (775) 323-3500 FAX (775) 323-3599  
Post Office Box 13375  
Reno NV 89507  
USA

NON PROFIT  
ORGANIZATION  
U.S. POSTAGE  
PAID  
RENO, NV  
PERMIT NO. 625

## **Geological Society of Nevada Symposium 2005** **www.GSN2005.org**



**May 15-18**

Technical Sessions, Exhibits, and Core Shack,  
Sunday-Wednesday

**May 10-13**

Pre-Meeting Field Trips, Wednesday-Friday

**May 14**

Society of Economic Geologists Forum, Saturday

**May 19-21**

Post-Meeting Field Trips, Thursday-Saturday

**May 19-20**

Short Courses, Thursday-Friday

John Ascuaga's Nugget Hotel  
Reno/Sparks, Nevada

**Exhibitors** — Showcase your company's products, services, and investment opportunities to decision makers from around the world. Reserve your booth early, either on the Web or by contacting us at [exhibits@GSN2005.org](mailto:exhibits@GSN2005.org).