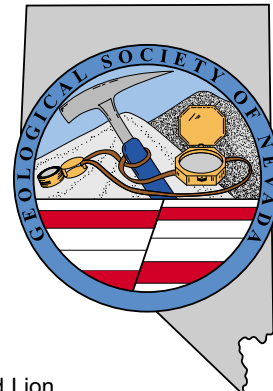


GSN NEWSLETTER



May 2005, Vol. 20, No. 5

PRESIDENT

Dieter Krewedl
Krewedl Mineral Exploration
dkrewedl@usamedia.tv

VICE PRESIDENT

Ellie Davie Leavitt
Consultant
zoracdavie@aol.com

SECRETARY

Leslie Olmstead
Agnico-Eagle (USA) Limited
l olmstead@nevadacontact.com

TREASURER

Camille Prenn
Mine Development Associates
cami@mda.com

MEMBERSHIP CO-CHAIRS

Greg McN. French
Consulting Geologist
GMcNFrench@aol.com

Dave Shaddrick

Golden Odyssey Mining, Inc.
Dshaddrick@aol.com

PUBLICATION CO-CHAIRS

Elizabeth A. Zbinden
Round Mountain Gold Corp.
E_Zbinden@geology.reno.nv.us

Ruth Carraher

C&M Consultants
RACarraher@aol.com

OFFICE MANAGER

Andrea Robinson
gsn@mines.unr.edu

CALENDAR OF GSN EVENTS

- May 11th Wednesday** WINNEMUCCA CHAPTER MEETING: Humboldt Room at the Red Lion. Speaker: Regina Smith, Winnemucca BLM Field Office, sponsored by EMM Core Drilling Services. Social at 6:30 pm, talk at 7:00 pm. Please contact Fred Breit at 775/635-4979 or fred.breit@newmont.com. See page 3 for more information.
- May 15-18th** GSN Symposium 2005 "Window to the World" with pre- and post-field trips. See pages 8 through 13.
- May 26th Thursday** SOUTHERN NEVADA CHAPTER MEETING: Room 102, Lily Fong Geoscience Building, UNLV, Las Vegas, NV. Speaker: Dr. Marvin (Nick) Saines, Consulting Geologist, "Evidence for Glaciation in the Spring Mountains." Social with food and drink at 6:00 pm, talk at 6:30 pm. Contact Melissa Hicks at 702/895-1162 or hicksm@unlv.nevada.edu. See page 4 for abstract.
- May 28th** SOUTHERN NEVADA CHAPTER: Kyle Canyon Moraine Field Trip, Spring Mountain National Recreation Area. Contact Melissa Hicks at 702/895-1162 or hicksm@unlv.nevada.edu.
- June 18th** GSN GOLF TOURNAMENT: Washoe County Golf course. See page 2 for details.
- ELKO CHAPTER MEETING: No meeting in May. Details will be announced on a picnic in early July. For more information contact Stacy Saari at 775/778-2679 or stacysaari@newmont.com.



GSN Newsletter is published monthly except June and July

Geological Society of Nevada, PO Box 13375, Reno, NV 89507 USA, 775/323-3500, www.gsnv.org
Office location: Laxalt Mineral Research Center, Rm 266, UNR. Hours: Mon thru Fri, 1:30-4:30 pm

FROM THE PRESIDENT

Dieter Krewedl, *GSN President 2004-2005*

Welcome to everyone attending the Geological Society of Nevada **Symposium 2005 – Window to the World**. The GSN symposia are organized every five years by a group of dedicated volunteers interested in providing a forum in which to exchange new exploration ideas and information. This newsletter will provide you with advance information on the Symposium's daily agenda, social events, core shack, luncheons, exhibitors, etc. Symposium 2005 is expected to be a major international exploration meeting and I hope it will be an enjoyable and rewarding professional experience for everyone attending.

Thanks to Roger Steininger for presenting us with an update of the Graben deposit located in the Borealis district during our April dinner meeting. We appreciate Roger making the presentation on very short notice after management of Round Mountain Gold canceled Dave Harvey's scheduled talk on Gold Hill. We wish Roger and Gryphon Gold every success to get Borealis into production next year.

The re-election of the entire GSN officers and committee chairs for the 2005–2006 year also took place during the April meeting. The willingness of the GSN Executive Committee to volunteer for another year speaks well of their dedication and loyalty to our great organization.

The GSN has been guided this year by an excellent group of officers and committee chairs. **Ellie Leavitt** stepped in and accepted the vacant Vice President position and is already in the midst of planning a great fall field trip. **Leslie Olmstead** as Secretary has been a meticulous taker of the minutes of the Executive Committee meetings and helped put together a great field trip last fall. **Camille Prenn** has been a steady voice on all GSN matters and keeps a tight track on our finances as Treasurer. **Greg French** and **Dave Shaddrick** as co-chairmen of the Membership Committee have helped increase our membership by over 10% from the previous year. **Elizabeth Zbinden** and **Ruth Carraher** as Publications Committee



News and Announcements

FROM THE PRESIDENT *continued from page 1*

co-chairmen have edited, organized booth sitters and helped with the sale of our publications. **D.D. LaPointe** and **Rachel Dolbier** as co-chairmen of the Education Committee have made a real contribution to the local community as well as GSN by raising money with the most successful annual Christmas raffle ever. **Mario Desilets** as Web master keeps the website and many other things in good working order. And finally thanks to **Ann Carpenter** for her many efforts to raise money as Chairman of the GSN Foundation.

The support staff also does a tremendous job for the GSN and needs to be thanked. Our new office manager, **Andrea Robinson**, keeps the office running smoothly. **Laura Ruud** does lots more than just keep our books in order. **Raye Buckley** is an extremely conscientious and capable typographer, who produces the newsletter and membership directory. And finally **Peg O'Malley**, who continues to do a great job with the field trip guidebooks.

All of these people will be back again next year to help make this organization even better. I look forward to working with all of them again next year.

Finally, don't forget to sign up for the GSN annual golf tournament scheduled for Saturday, June 18th at the Washoe County golf course. **Eklund Drilling** has generously agreed to cover all of the costs for the golf and barbeque. It should be a lot of fun! Our GSN monthly meetings will resume September. Have a great summer.



HAPPY TIMES AT GSN MONTHLY MEETINGS!
D.D. LaPointe, Rachel Dolbier, Andrea Robinson, Cami Prens, and Laura Ruud.

ATTENTION GOLFERS!!

The GSN annual golf tournament is scheduled for Saturday, June 18 at Washoe County Golf course. A 1:00 PM shotgun start is planned, with a barbeque to follow. **Eklund Drilling** has generously offered to sponsor the event, and Bob Felder has agreed to organize the activities. **There will be no charge for the golf and the barbeque this year, as Lance has agreed to cover all costs!!** We can accommodate only 144 golfers, so sign up early. Deadline for registration is June 3 and **there will be no late entries.** You may call (775/323-3500), fax (775/323-3599) or e-mail (gsn@mines.unr.edu) Andrea at the GSN office to sign up, individually, or as a foursome. Please provide the following information for each golfer.

REGISTRATION FORM

Name: _____ Ave. score: _____
 Address: _____
 Phone: _____ E-mail: _____
 Teamed with: _____
 BBQ Guest Name(s): _____

SPONSORED BY EKLUND DRILLING COMPANY, INC.

Thanks to Enviroscientists, Inc. for hosting the April meeting.

WINNEMUCCA CHAPTER MAY 11th MEETING

Regina Smith of the Winnemucca BLM Field Office will speak on the variety of vertebrate paleontology found in the area. Examples include a new pistosaurid sauropterygian, *Augustasaurus hagdorni*, discovered and collected from the Augusta Mountains by Olivier C. Rieppel, dating to the middle Triassic, and the Columbian Mammoth found in the Black Rock Desert, dating to the late Pleistocene.

GSN AT PDAC 2005: THANK YOU

We don't have to tell our readers that the boom in gold, and mining in general, continues. Attendance at PDAC illustrates that; it was certainly the biggest in recent memory. Every nook and cranny was full! This bodes well for GSN's own symposium in May.

Thank you to the many friends of GSN who shared their booth space with us to distribute Symposium publicity and GSN publications lists:

Atna Resources Ltd.
AuEx Ventures, Inc.
Bravo Ventures
Diversified Inholdings LLC
Enviroscientists, Inc.
Gold Summit Corporation, USA
International Resource Center
Kappes Cassidy & Associates
Kinross Gold Corp.
SEG
USGS
Western Goldfields, Inc.

STUDENT DINNER FUND

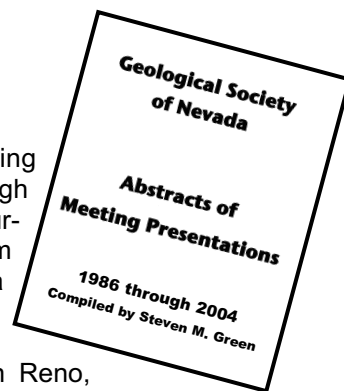
Did you know that student members who attend the GSN monthly meeting don't pay for their dinners? Since 1996, GSN Members have made donations to the Student Dinner Fund to encourage Mackay students to attend the monthly meetings. Whatever student dinners are not specifically donated are paid for out of GSN's general funds. The most generous donors have been our Honorary Members along with several members who consistently step up to the plate. Over the years the amount of donations and number of students eating dinner have fluctuated. Since 2001, the trend of student attendance has increased, and has now leveled off at around 50 student dinners per year. We had a near record attendance of 14 students at the April GSN meeting. Unfortunately, donations have been down the last two years and we now have a deficit in the Student Dinner Fund.

Next year's Membership Renewal Form will have a line inserted so you can easily donate to the Student Dinner Fund. In the meantime, when you're at a GSN monthly dinner meeting, please remember the students and make a donation for their meals so we can continue to encourage their attendance.

UPDATE YOUR LIBRARIES

The Abstracts of Meeting Presentations - 1986 through 2004 will be available for purchase at the GSN Symposium booth. This publication is a comprehensive collection of the presentations given at the membership meetings in Reno, as well as presentations given at the membership meetings in the sub-chapters (Elko, Winnemucca and Southern Nevada). All libraries should have this quick and informative publication for reference.

Many other publications will be available for purchase at the GSN booth #8 during the Symposium. If you don't want to carry your library purchases around the Symposium, the GSN will also be taking orders for publications. Stop by the booth and see what you can't live without.



THE SUMMER!

Although we will not have regular membership meetings until September, the GSN office will still be open from 1:30 to 4:30, Monday through Friday. If you are in the area and need a publication, stop in during those hours. If you can't make it then, but need something, give Andrea Robinson a call at the office and she will help you. Hope everyone has a wonderful summer.

2005 ELKO MINE EXPO

Jay Olcott, *WUMA Secretary*

The Western Underground Mine Association (WUMA) will be hosting the technical presentations June 9th and 10th at the 2005 Elko Mine Expo. WUMA has gone heavy on the geology side this year and has some great talks lined up including updates by state geologists from Alaska and Nevada, to specific talks about local mines and projects. Visit WUMA's website (www.wuma.net) for more information about the organization and the presentations at the Mine Expo. There will be a sponsored social hour after each day's presentations. The more attendance we get the better!

WUMA will also be sponsoring a banquet dinner on June 9th (Thursday) at the Western Folklife Center featuring author of *The Deep Dark*, Gregg Olsen, along with the two survivors of the Sunshine Mine Disaster, Ron Flory and Tom Wilkinson. Others who are slated to attend include the Safety Engineer at the time of the fire, mine rescue team members from the Sunshine and other area mines who were called in to help, miners who escaped, and family of those lost in the tragedy. The price for the banquet has yet to be determined (~\$20) and you will need to RSVP. Please refer to the WUMA website for more details as they become available.

ACTIVITY UPDATE

Mike Brady, March 2005
www.activityupdate.com

NEVADA

Golden Phoenix Minerals Inc. announced that it began a restructuring of its mining assets that includes the temporary halt of mining operations at the Mineral Ridge Mine for the winter. Heap leaching will continue. (resource = 2,658,000 tons @ 0.079 opt Au) *P.D.: February 2005*

Pacific Ridge Exploration Ltd. announced that it terminated its interest in the Haystack Property due to discouraging exploration results. *Press Release: February 11*

Coeur d'Alene Mines Corp. announced that reserves at the Rochester Mine aggregate 23,980,000 tons @ 0.84 opt Ag, 0.009 opt Au proven+probable. (was 46,946,000 tons @ 0.008 opt Au, 0.85 opt Ag proven+probable) *2004 Annual Report*

Romarco Minerals Inc. announced that it terminated its interest in the Hog Ranch Property of Seabridge Gold Inc. due to discouraging exploration results. (resource = 1,212,000 tons @ 0.049 opt Au) *Press Release: February 3*

State District Judge James Hardesty ruled that Washoe County had the right to deny a mining permit for Oil Dry Corp.'s clay mine north of Reno on health and safety grounds. *P.D.: February 2005*

The U.S. Fish and Wildlife Service announced that it will not recommend that the sage-grouse be listed as either endangered or threatened since the classification is not warranted at this time. *P.D.: February 2005*

Bravo Venture Group Inc. announced that it expanded the South Lone Mountain Property to 1,533 claims (was 108 claims) through staking under the direction and funding of Placer Dome Inc., its joint-venture partner. Bravo also stated that an oil well drilled in 1989 on the present South Lone Mountain Property intersected a 120-foot thick section of Roberts Mountain Formation that, based on its assays average 0.33 grams/tonne gold. The mineralized interval is located immediately below 1,400 feet of valley fill. *Press Release: March 4*

Atna Resources Ltd. announced that based on recent drill results at the Pinson Project, resources aggregate 1,760,000 tons @ 0.302 opt Au measured+indicated. (was 10,000,000 tons @ 0.046 opt Au at MAG) *N.M.: March 11*

Gold Summit Corp. announced that recent drill results at the Monte Cristo/Maclean Pit Project include 239.79-240.77 meters @ 0.659 opt Au (MCC20); 218.08-219.24 meters @ 0.428 opt Au (MCC21); 232.6-233.8 meters @ 0.053 opt Au (MCC22); and 256.1-258.54 meters @ 3.047 opt Au (MCC23). *Press Release: March 24*

Miranda Gold Corp. announced that it staked 120 claims within the Iron Point District of northwestern Nevada. *Press Release: March 1*

SOUTHERN NEVADA CHAPTER MAY 26th MEETING

Evidence for Glaciation in the Spring Mountains

Dr. Marvin (Nick) Saines, Consulting Geologist

Evidence for Pleistocene glaciation of the Spring Mountains includes glacial till, cirque basins, and a remnant of a moraine in upper Kyle Canyon. The elevation of the moraine, the lowest feature, is 2530 m (8,300 ft) above sea level. Geologists have discussed the possibility of Pleistocene glaciers in the Spring Mountains for over 70 years. Flint (1947) references Blackwelder (1934) in stating that the Spring Mountains held one or more alpine glaciers during the Pleistocene. Flint (1957, 1971) references personal communication with C.W. Longwell to support the presence of glaciers in the Spring Mountains. Piegat (1980) identifies degraded cirques at the head of Kyle Canyon and references Burchfield *et al* (1974) who mapped possible glacial deposits at heads of two degraded cirques. In 1990 Saines mapped the morainal deposit in Kyle Canyon. The exposure is over 10 m (33 ft) high and 50 m (164 ft) long and is comprised of unsorted glacial till at the base overlain by about 2 m (6.6 ft) of glaciofluvial deposits. The limestone clasts in the till range up to 1 m in size, and many are striated. In 1999 Professor Rik Orndorff and graduate student John Van Hoesen of UNLV were shown the exposure. They conducted research, and published several papers and abstracts on the glacial geology of the Spring Mountains, including Orndorff, Van Hoesen, and Saines (2003). The results of their research on erosional and depositional landforms in Kyle Canyon indicate that the Spring Mountains were the southernmost glaciated range in the Great Basin during the Pleistocene. Deposits in Lee Canyon, to the north of Kyle Canyon, have yet to be mapped.

The field trip on Saturday, May 28, will visit the moraine and will include an optional hike to Big Falls, a possible hanging valley below a cirque basin. Let's use multiple working hypotheses to brainstorm other possible origins for the features. Abe Van Luik thinks the deposit at 8,300 ft is actually a glacial debris flow rather than a moraine, and is "pretty convincing proof of glaciers on the slopes above it!" he states. See what you think.

Nick is a consulting hydrogeologist and environmental geologist, who has been in Las Vegas for 16 years. In the 1970s, with Harza Engineering Company in Chicago, Nick worked on dams and groundwater supply projects in the U.S., Guyana, Iran, Afghanistan, Jordan, and Malaysia. In the 1980s he spent five years in the Sultanate of Oman doing groundwater exploration and development. He came back to Harza to go to Las Vegas as a hydrologist on the Yucca Mountain Project in 1989. After Harza's contract ended he joined OHM Remediation Services where he worked for five years on cleanups of military bases in the west and on Midway Island. Over the past seven years he has been doing mostly environmental and groundwater-related work in Las Vegas. His interest in glacial deposits stems from the summer of 1963, when he was Princeton Professor Paul MacClintock's assistant, mapping glacial deposits in northern Vermont. He has worked in glacial terrain in the Northeast and Midwest, and studied the glacial deposits in Great Basin National Park in Nevada.

Fire Assay
ICP - OES
ICP - MS
AAS
Custom Preparation
Bullion Analyses
BLEG

Corporate Office
1500 Glendale Avenue
Sparks, NV U.S.A. 89431-5902
Telephone (775) 356-0606
Fax (775) 356-1413

Chris Ioannakis, Managing Director,
Analytical Services

Elko Office
2320 Last Chance Road
Elko, NV U.S.A. 89801-4852
Telephone/Fax (775) 738-9100

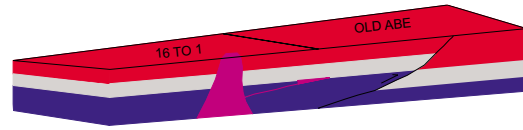
E-mail: AALADMIN@aallabs.com
Website: www.aallabs.com



**American
Assay &
Environmental
Laboratories**

G.I.S. Land Services

Greg Ekins M.S. R.L.P. #32306 President
Mineral Landman - Computer Draftsman
"From Courthouse Records to Final Map"



AutoCad - ArcView - Mapinfo
Geologic, GeoChem and Land Status Maps
www.gislandservices.com

E: greg@gislandservices.com
P: 775-746-8803 F: 775-746-8802

6635 Broadridge Ct.
Reno. NV 89523

GSN SKI DAY - APRIL 2, 2005

By Eric Ruud

A wonderful day was enjoyed by all those who attended the GSN Ski Day at Mt. Rose last month. Despite some gusty winds on the ridge tops, the sun was bright, the snow crisp and the scenery was outstanding. In the morning there was a tour of the ski area with some impromptu jumping over the Fremont Spine on the Slide side. Some attendees learned to fly without wings. Then the tele-markers were out to show how fast they could ski. Bob "Zoom Zoom" Cuffney was often seen passing the group in long arcing turns, shouting "This is better than working!" About 25 people joined up for a BBQ in a corner of the upper parking lot that was protected from the Nevada breeze. There were gourmet desserts from Phyllis Brock and Ann Carpenter, Bratwurst from Peter Clarke, baked beans from the Ruuds, a great salad from the Prenns and a whole bunch of other good food.

After lunch, the group broke up into the "Chili Peppers" and the "Cruisers". The Peppers headed to the steep terrain, aka "The Chutes", and the Cruisers enjoyed the intermediate runs and the less thigh-burning areas. Overall the weather was excellent compared to the next day when the



wind was high and the light was flat. Everyone had such a good time that this is likely to become a new GSN tradition. Thanks to all who participated and we hope to see you all next year!

GSN MEMBERS' PERSONAL NOTES & NEWS

Career Related Moves

- ▶ Bob Felder has recently been appointed Vice President of Exploration for New West Gold Corporation.
- ▶ Ted Wilton has accepted the Vice President, Exploration position with Neutron Energy Company focusing on uranium targets in the western United States. He will remain on a retainer contract with Queenstake Resources for the remainder of 2005.

Deaths

Paul Damon, long time professor at the University of Arizona, passed away on April 14th. Paul was doing what he loved - working on a paper when he collapsed. No service is planned until late May or early June.

Members are encouraged to keep us informed about their own career related moves and awards, and deaths of GSN colleagues. Your information needs to be received by Andrea at gsn@mines.unr.edu by the 21st of each month.



RENT A PIMA!!



IDENTIFY and MAP ALTERATION MINERALS IN THE FIELD and CORE

CONTACT US FOR Rentals and Services

Spectral International, Inc.
303 403 8383 pusa@rmi.net
www.specmin.com

WE CAN HELP!

- Environmental and exploration support services
- Celebrating 40 years of service to the mining industry
- Experience in Mexico / Canada / Alaska



NORTH AMERICAN EXPLORATION INC.
NORTH AMERICAN MINE SERVICES INC.
GEOLOGY | GEOPHYSICS | GEOCHEMISTRY
HYDROLOGY | ENVIRONMENTAL SERVICES

447 North 300 West, Ste. 3 • Kaysville, Utah 84037 • Phone (801) 546-6453 Fax (801) 544-4554
nae@nae-xploration.com

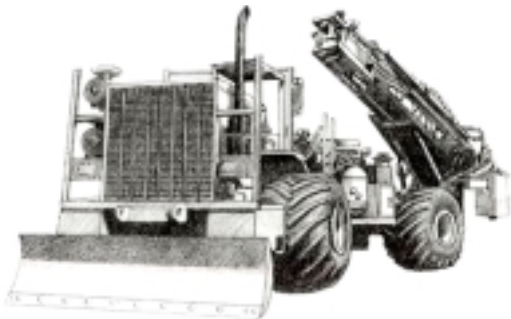
MINERAL EXPLORATION SERVICES

**SOIL SAMPLING
CLAIMSTAKING
PROPERTY EVALUATION
MINE HAZARD FENCING**

5655 Riggins Ct., #15, Reno, NV 89502
Tel: (775) 954-1082 Fax: (775) 829-6882
email: day@mineralexploration.com



Diversified Drilling LLC



*Providing drilling services to the mining/
metals industry since 1980*

3650 Grant Creek Road
Missoula, Montana 59808
(406) 542-1010 Fax (406) 542-5065
Formerly Dateline Drilling, Inc.

ALS Chemex
beyond expectations

reno
tel: 775-356-5395

elko
tel: 775-738-2054

winnemucca
tel: 775-625-4192

for other locations around
the world visit
www.alschemex.com



ALS Chemex

www.alschemex.com

NEW!

ALS Chemex has opened a facility in Winnemucca to better serve our Nevada clients.



Enviroscientists, Inc.

Reliable Service for All Your Environmental Needs

4600 Kietzke Lane, Suite C129, Reno, Nevada 89502
 Phone: (775) 826-8822 Fax: (775) 826-8857

Richard DeLong
 President

www.enviroincus.com

Opal Adams
 Vice President



Geological Society of Nevada Symposium 2005

15-18 May 2005, Reno, Nevada (USA)

WINDOW TO THE WORLD

Talks & Posters
 Core Shack
 Vendor Exhibits

Short Courses & Seminars
 Field Trips
 Networking

Geological Society of Nevada Symposium 2005, gnsymp@unr.edu
www.gsn2005.org, 775-323-4569, fax 775-323-3599
 PO Box 13375, Reno, NV 89507-3375

Sample Bags

HUGE INVENTORY



LOW, LOW PRICES

NEW ADDRESS! LEGEND, INC.

988 Packer Way
 Sparks, NV 89431

Off Glendale east of McCarran
 phone: (775) 786-3003
 fax: 786-3613
www.Lmine.com
 email: info@Lmine.com

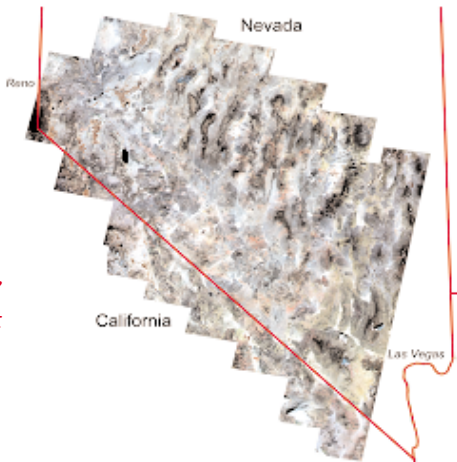


Carlin Trend Mining Supplies & Service

369 5th St., Elko, NV 89801
 (775) 778-0668, Fax: (775) 778-0687, carlintrend@frontiernet.net

Geological Consulting - Claim Staking - Soil Sampling
 Mineral Surveys - Mine Hazard Fencing
 Geology & Drafting Supplies - AutoCad & GIS
 Temporary Employees in All Fields

Exploration in Nevada???



Map of the alteration "hot spots" throughout the Walker Lane!

WALKER LANE ASTER MOSAIC

75 IMAGE MOSAIC: includes FALSE COLOR, ALTERATION MINERALS, SILICA, IRON OXIDE IMAGES

WWW.ASTERIMAGES.COM
 email: pusa@rmi.net
dwc@overhill-imaging.com
 Denver: 303 403 8383

Jo Beth Allen Professional Graphics

CAD Drafting/Digitizing/Scanning
 High Resolution Presentation Graphics
 Plotting/Printing
 Geologist

1055 Joshua Drive
 Reno, Nevada 89509

Phone: 775-324-7960
 Fax: 775-324-7583

jobeth@yellowsub.net

Petrographic and Ore Microscopy Services

for applications in the following areas:

- Base and Precious Metals
- Industrial Minerals
- Mineral Exploration
- Geological Mapping
- Process Mineralogy
- Forensic Geology



P.O. Box 10080
 American Canyon, CA 94503
 Phone: 707-553-2772
 E-Mail: sfmicro@earthlink.net

Schurer & Fuchs



Geological Society of Nevada Symposium 2005 “Window to the World”

You need to attend the GSN Symposium 2005 scheduled from May 15 to May 18 with pre- and post-Symposium field trips. The Symposium has a tremendous slate of speakers and

field trips. Please inform your colleagues to attend and benefit from the meeting. You will meet many people from the industry and renew friendships. Many field trips are full and the others are filling quickly. There is limited space on these trips. Please check the Symposium web site for the field trips that are open. The current status of the meeting:

- 174 manuscripts have been submitted
 - 112 speakers are in order
 - 66 poster presenters are confirmed
 - 15 core shacks are committed
 - 9 Field trips are mapped out
- 4 Field trips are closed & others are filling quickly
 - 4 Short courses are ready
- SEG pre-Symposium Forum is arranged
 - The Big Party is being planned
- “Nice” items for the Silent Auction are being accepted
 - The Exhibitors Hall is almost full
 - Over 800 attendees have signed up
- The registration price increases at the end of April
- Avoid the wait at the conference—sign up on-line
- The on-line registration will be open until May 10th
 - There are sponsor opportunities available
- Register now and avoid delays at the conference

Few spaces are still available for exhibitors to display their services and products. Only one large booth is still available. Please check the website for the remaining offerings. Once they are filled, there will be no additional booths added. This is an opportunity to meet many people in the mining industry.

Please contact Brenda at the GSN Symposium office, 775/355-8388 or bestay@gsn2005.org. Brenda’s office is located inside the Gold Summit office on Caughlin Parkway. Sign up and register for the Symposium, Field Trips, Short Courses and Exhibits on the website at www.gsn2005.org.

Eric Ruud, Co-Chairman

GSN SYMPOSIUM 2005 SHORT COURSES May 19-20, 2005 **SPACE IS STILL AVAILABLE**

**SC01: Mineral Resource Estimation
From Sampling to Estimation and Classification:
Methodology, Philosophy and Real-World Examples**
Instructor: Steve Ristorcelli,

Mine Development Associates, Reno, Nevada
Co-Instructors: Michael Gustin, Scott Hardy,
Mine Development Associates
Cost: \$250, 1 day
Participants: 15 minimum, 30 maximum

SC02: Digital Mapping

Instructor: Gary Edmondo, MinGIS, Reno, Nevada
Cost: \$250, 2 days
Participants: 12 minimum, 20 maximum

SC03: Real World Geophysics: A Window Into the Ground

Instructor: Frank P. Fritz, Fritz Geophysics
Cost \$275 Regular, \$100 Student, 1 day
Participants: 25 maximum

SC04: Structuring a Mining Deal

Instructors: Bill Casburn, Kirk Williams Esq.,
Don Gustafson, and Sergio Pastor
Cost: \$ 275 regular, \$150 students, 2 days

For more information, visit the Symposium Web Site at:
www.GSN2005.org

STUDENT POSTER AWARD

Regular attendees to the last few GSN membership meetings may have noticed the excellent student posters that have been presented. These student posters have been presented as part of a student poster competition sponsored by GSN. The winner of the competition will be announced and the \$500 prize will be presented at the GSN Symposium 2005 – Windows to the World in May. Eligible students that have presented were the following:

Tristan Ashcroft, *Geometry of Post-Lower Triassic Deformation on Coal Mine Basin, Adobe Range, Elko Co., Nevada*

Keith Campbell, *The Geology, Alteration, and Mineralization of the True North Gold Deposit*

Craig Mach, *Tectonic Controls, Timing and Geochemistry of Supergene Enrichment of the Tyrone Porphyry Copper Deposit*

Juan Ruiz Parraga, *Geology of the Chukar Footwall Mine, Maggie Creek District, Carlin Trend, Nevada: A Progress Report*

SEG Forum: Controversies in the Origin of World-class Gold Deposits: Carlin and Witwatersrand

Saturday May 14, 2005

(Pre-registered only - Professional \$149; Students \$89)
Ponderosa A & B

The Society of Economic Geologists is sponsoring a one-day forum to examine and discuss the origins of gold deposits in the Carlin and Witwatersrand camps. Despite their importance, there is still no general agreement on their origins.

In the tradition of the scientific debates of the nineteenth and early twentieth centuries, we plan a series of talks that give contrasting views to the origin of these deposits, followed by panel discussions between experts and open discussions with the audience. Although discussions will likely be animated, the emphasis will be on looking forward and identifying where we need to go in the future to better understand and explore for these deposits.

Witwatersrand

Speakers:

Hartwig Frimmel (University of Cape Town, Wuerzburg University)

Neil Phillips (CSIRO)

Moderator: Laurence Robb (University of Witwatersrand)

Discussion panel (in addition to speakers)

David Groves (Univ. of Western Australia)

John Chesley (University of Arizona)

Jonathan Law (CSIRO)

Keith Kenyon (Anglogold)

Andrew Barnicoat (Geoscience Australia)

Victor Wall (Taylor-Wall Associates)

Carlin

Speakers:

Jean Cline (University of Nevada, Las Vegas)

Marcus Johnston (Victoria Resources) and

Michael Ressel (Newmont)

Eric Seedorff/Mark Barton (University of Arizona)

Moderator: Greg Arehart (Univ. of Nevada, Reno)

Discussion panel (in addition to speakers):

Albert Hofstra (USGS)

Richard Tosdal (MDRU, UBC)

Chris Henry (NBMG)

Tommy Thompson (Univ. of Nevada, Reno)

Robert Leonardson (Barrick)

Stephen Kesler (University of Michigan)

David Groves (Univ. of Western Australia)



Social Events

Saturday 14 May

6:30 – 8:00 PM

SEG RECEPTION

Sponsored by: Coeur d'Alene Mines Corp.

Poolside Terrace

Participants in the SEG Forum are invited to continue the discussion in an informal setting.

Sunday 15 May

5:00 – 8:00 PM

ICEBREAKER RECEPTION

Pavilion A-E

Come join your friends, new and old, while visiting the exhibits.

Monday 16 May

5:00 – 6:30 PM

EXHIBITORS RECEPTION

Pavilion A-E

Monday 16 May

5:00 – 6:30 PM

ALUMNI RECEPTION

Great Basin Brewery

Looking for old school friends? Check out the Alumni Event at Great Basin Brewery. Alumni from the following institutions have tables set aside for an evening of no-host food and drinks.

Participating schools:

Bowling Green State University

Colorado State University

Mackay School of Mines

South Dakota School of Mines and Technology

Stanford University

University of Arizona

University of Montana

University of Toronto

Western State College of Colorado

Not a graduate of any of these colleges? Come on over anyway and join the all-alumni table. You never know who you might run in to!

Tuesday 17 May

5:00 – 6:30 PM

EXHIBITORS RECEPTION

Pavilion A-E

Tuesday 17 May

6:30 – 11:00 PM

THE BIG PARTY

Sponsored by: Eklund Drilling

Rose Ballroom A

Join your fellow Symposium 2005 registrants for an evening of food, music and fun. The fabulous social event, sponsored by Eklund Drilling, will feature a hosted bar, food from around the world, an exciting silent auction, and the sounds of local band Rock Steady. Doug Silver will be your MC for this night of entertainment.

Wednesday 18 May

5:00 – 8:00 PM

CLOSING SOCIAL

Great Basin Brewery

Say farewell at the final Symposium 2005 social event, at the Great Basin Brewery across the street from the Nugget.

GSN SYMPOSIUM 2005

Wednesday 11 May through Friday 13 May	Saturday 14 May	Sunday 15 May	Monday 16 May
	Registration 5:00 PM - 8:00 PM PAVILION FOYER	Registration 7:00 AM - 4:30 PM PAVILION FOYER	Registration 7:00 AM - 4:30 PM PAVILION FOYER
Pre-meeting Field Trips	SEG Workshop World-class Gold Controversies 8:00 PM - 6:00 PM PONDEROSA A & B	Great Basin Regional Geology 8:30 AM - NOON ROSE A & B	Exploration and New Discoveries: Europe and the CIS 8:30 AM - NOON ROSE A & B
		Keynote Luncheon Validating Mineral Discoveries: A Mug's Game?, Douglas B. Silver NOON - 1:30 PM PONDEROSA A & B	Luncheon Highlights from the SEG Forum Greg Arehart and Laurence Robb NOON - 1:30 PM PONDEROSA A & B
		Great Basin New Discoveries 1:30 PM - 5:00 PM ROSE A & B	Exploration and New Discoveries: Asia/Africa/Australia 1:30 PM - 5:00 PM ROSE A & B
		Exhibits and Posters 5:00 PM - 8:00 PM PAVILION A-E	Exhibits and Posters 10:00 AM - 6:30 PM PAVILION A-E
		Icebreaker 5:00 PM - 8:00 PM PAVILION A-E	Reception 5:00 PM - 6:30 PM PAVILION A-E
	SEG Reception 6:30 PM - 8:00 PM POOLSIDE TERRACE		Alumni Reception 6:30 PM - 9:00 PM GREAT BASIN BREWERY

Luncheons

Keynote Luncheon

Sunday, May 15 (Tickets \$30)

Ponderosa A & B **Sponsored by: ALS Chemex**
Validating Mineral Discoveries: A Mug's Game?
Speaker: Douglas B Silver

GSN's mineral exploration conference brings together the world's great ore finders with wannabee discoverers into a focused forum to discuss exploration techniques, targeting concepts, and tricks of the trade. The plenary sessions typically use success stories to provide a looking glass into the world of discovery.

But what is a discovery? We know that large mines are derived from discoveries. We also know that many small deposits are not considered discoveries. But the Exploration Industry has no standard definitions or protocols for defining a discovery. This leaves the window wide open for interpretation. More importantly, it also leads to confusion as future

discoverers encounter a fog while searching for the path of Truth.

Mr. Silver will challenge the audience in their knowledge of discovery definitions through case histories and commentary, and in hopes that this topic can be battered down.

Monday, May 16 (Tickets \$30)

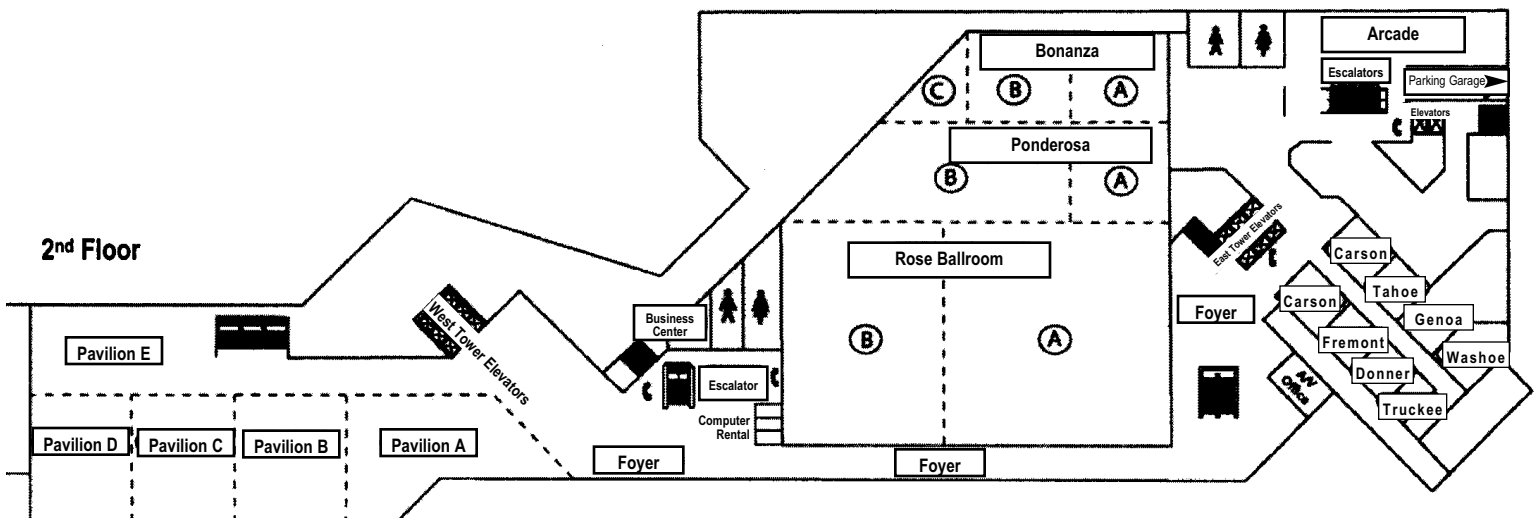
Ponderosa A & B **Sponsored by: Geotemps**
Highlights from the SEG Forum

Speakers: Greg Arehart and Laurence Robb

If you are not able to attend the pre-meeting SEG forum, Controversies on the Origins of World-Class Gold Deposits, here is your chance to get a little of the flavor and a few of the arguments. Greg Arehart (University of Nevada, Reno) will summarize the debate over the Carlin Trend, and Laurence Robb (University of Witwatersrand) will summarize the debate over the Witwatersrand.

DAILY SCHEDULE

Tuesday 17 May	Wednesday 18 May	Thursday 19 May through Saturday 21 May
Registration 7:00 AM - 4:30 PM PAVILION FOYER	Registration 7:00 AM - NOON PAVILION FOYER	
Concurrent Sessions 8:30 AM - NOON <ul style="list-style-type: none"> • Remote Sensing: Mapping BONANZA ROOM • Great Basin Regional Geology Extended ROSE B • Exploration Technology PONDEROSA A • Geothermal Resources of the Western US PONDEROSA B 	Exploration and New Discoveries: The Americas 8:30 AM - NOON ROSE A & B	Short Courses and Post-meeting Field Trips
Concurrent Sessions 1:30 PM - 5:00 PM <ul style="list-style-type: none"> • Remote Sensing: Exploration BONANZA ROOM • Student Research Showcase ROSE B • Professional Qualifications PONDEROSA A • Industrial Minerals PONDEROSA B 	Exploration and New Discoveries: The Americas 1:30 PM - 5:00 PM ROSE A & B	
Exhibits and Posters 10:00 AM - 6:30 PM PAVILION A-E	Exhibits and Posters 10:00 AM - 3:30 PM PAVILION A-E	
Reception 5:00 PM - 6:30 PM PAVILION A-E	Closing Social 5:00 PM - 8:00 PM GREAT BASIN BREWERY	
The Big Party 6:30 PM - 11:00 pm ROSE A		



GEOLOGICAL SOCIETY OF NEVADA SYMPOSIUM 2005

“Window to the World”



Core Shack

Sunday, May 15 – Wednesday, May 18

Pavilion A

AMERICAS

Jacobina Mine - Bahia Gold Belt, Brazil, Desert Sun Mining Corporation

El Penon Mine, Region II, Chile, Meridian Gold Corporation

Mulatos Deposit, Salamandra Gold Camp, Mexico, Alamos Gold Inc.

EUROPE AND CIS

Rosia Montana Gold Deposit, Rosia Montana, Transylvania, Romania, Gabriel Resources

GREAT BASIN – SEDIMENT HOSTED DEPOSITS

Limousine Butte Project, White Pine County, Nevada, Nevada Pacific Gold Corporation

Monte Cristo Project, Esmeralda County, Nevada, Gold Summit Corporation

Pinson Mine, Humboldt County, Nevada, Atna Resources Ltd.

Pequop Project, Elko County, Nevada, AuEx, Inc.

Phoenix Project, Lander County, Nevada, Newmont Mining Corporation

Goldstrike North Expansion, Eureka County, Nevada, Barrick Goldstrike Mines Inc.

Turquoise Ridge Mine, Getchell, Humboldt County, Nevada, Placer Dome U.S., Inc.

Cortez Hills Project, Lander & Eureka Counties, Nevada, Cortez Gold Mines

Starvation Canyon Project, Elko County, Nevada, Queenstake Resources USA, Inc.

Bald Mountain Mine, White Pine County, Nevada, Placer Dome U.S., Inc.

Ivanhoe (Hollister Mine), Elko County, Nevada, Hecla Mining Company

Lincoln Hill Dumortierite Project, Pershing County, Nevada, Nevada Natural Stone Supply, Inc.

GREAT BASIN – VOLCANIC HOSTED DEPOSITS

Sleeper Mine, Humboldt County, Nevada, New Sleeper Gold LLC

Gold Hill Project and Round Mountain Mine, Nye County, Nevada, Round Mountain Gold Corporation

GEOLOGICAL SOCIETY OF NEVADA SYMPOSIUM 2005

“Window to the World”



Exhibitors

Exhibitor	Booth Number	Exhibitor	Booth Number
Activation Laboratories Ltd	38	Layne Christensen	72
Aeroquest Limited	51	Legend Inc.	18
Agnico Eagle Mines Limited	37	M-I HDD, Mining and Waterwell	68
ALS/Chemex	71	Mackay School of Earth Sciences and Engineering	61
American Assay Laboratories	2	MICROMINE	59
American Bonanza Gold Mining Corp.	46	Miners Lunch Box	78
AssayNet Canada Inc.	74	Minerals Exploration & Environmental Geochemistry	14
Association for Women Geoscientists	26	Nevada Bureau of Mines and Geology	6
Association of Applied Geochemists	35	Nevada Division of Minerals	7
Baroid Industrial Drilling Products	47	Nevada Mining Association	43
Barrick Gold Exploration Inc	52	Nevada Pacific Gold	24
Boart Longyear Co/Lang Exploratory Drilling	22	Nevada Sunrise Exploration Ltd.	32
BSI Inspectorate America	75	Newmont Mining Corporation	73
Bullion River Gold Corp.	49	Northwest Mining Association	28
CGS Inc.	54	Pacific Geomatics Ltd.	9
CGS Personnel / SOS Staffing	27	Pearson, deRidder and Johnson	1
Coeur Products LLC	41	Placer Dome, Inc.	30
Condor Consulting, Inc	80	Quantec Geoscience	16
Connors Drilling LLC	64	Ruen Drilling, Inc.	45
Crystals Unlimited	12	SGS Minerals Services	36
Dynatec Drilling Inc.	53	Sierra Environmental Monitoring, Inc.	76
Enviroscientists, Inc.	48	Society of Economic Geologists	5
Gemcom USA Inc.	57	SpecTIR Corporation	44
Geological Society of Nevada	8	Spectral International	29
Geologix Explorations	42	Spencer B. Gross of Nevada, Inc.	25
Geoscan Data Acquisition Corp	77	TerraSource Software Inc.	81
GEOTEMPS, Inc.	60	Tone Resources Ltd.	69
Gold Summit Corporation	34	U. S. Geological Survey	50
Gradient Geology and Geophysics	39	WDC Exploration & Wells	15
iGage Mapping Corporation	19	Western Goldfields	70
Ikon Mining and Exploration	3	Women's Mining Coalition	40
Land Management Services, Inc.	17	Zonge Geosciences Inc.	20

GEOLOGICAL SOCIETY OF NEVADA



gsn@mines.unr.edu • www.gsnv.org
Telephone (775) 323-3500 FAX (775) 323-3599
Post Office Box 13375
Reno NV 89507
USA

NON PROFIT
ORGANIZATION
U.S. POSTAGE
PAID
RENO, NV
PERMIT NO. 931

CAN YOU REALLY TELL THE DIFFERENCE?

WE CAN



**IT LOOKS EASY, BUT OFTEN IT TAKES AN EXPERT
TO GET THE JOB DONE.**

As the established leader in Professional Personnel Services to the Mining and Minerals Industry, Geotemps recruits, screens, and employs all levels of experienced, qualified personnel. Geotemps stands with the industry in **Government Lobby Efforts**, with **Business Donations**, and with **Industry Associations**.



PROFESSIONAL STAFFING FOR THE MINERALS INDUSTRY
www.geotemps.com mining@geotemps.com

RENO, NV

775-746-7146
970 CAUGHLIN XING
SUITE 102, 89509
FAX: 775-746-7156

ELY, NV

775-289-6448
725 AVENUE K,
SUITE B, 89301
FAX: 775-289-6472

ELKO, NV

775-738-4707
557 WEST SILVER ST.,
SUITE 201A, 89801
FAX: 775-738-0409

TUCSON, AZ

520-292-1000
4760 NORTH ORACLE RD.,
SUITE 200, 85705
FAX: 520-292-9100