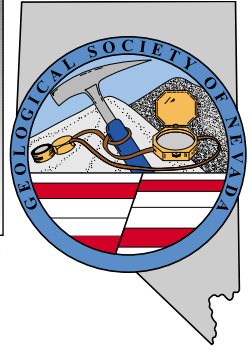


GEOLOGICAL SOCIETY OF NEVADA NEWSLETTER

Geological Society of Nevada, PO Box 13375, Reno, NV 89507 USA, 775/323-3500, www.gsnv.org
Office location: Laxalt Mineral Research Center, Rm 266, UNR. Hours: Mon thru Fri, 9-3:30 pm



January 2008, Vol. 23, No. 1

Published monthly except June and July

PRESIDENT

Greg Hill
Harvest Gold Corp. (US)
hillgreg@charter.net

VICE PRESIDENT

Marcus Johnston
Victoria Resources US Inc
marcus@apexmineralresources.com

SECRETARY

D.D. LaPointe
Nevada Bureau of Mines and Geology
dlapointe@unr.edu

TREASURER

Camille Prenn
Mine Development Associates
camie@mda.com

MEMBERSHIP CHAIR

Opal Adams
Enviroscientists, Inc.
ofadams@enviroincus.com

PUBLICATION CO-CHAIRS

Marilyn Miller
AuEx, Inc.
marilyn.miller1@sbcglobal.net

Debbie Schneider

Schneider and Schneider Assoc
dschneider41@charter.net

OFFICE MANAGER

Kelly Parsons
gsn@gsnv.org

CALENDAR OF GSN EVENTS

January 9, Wednesday

WINNEMUCCA CHAPTER will have the monthly meeting at the Martin Hotel beginning at 6:30 pm, talk to follow at 7:00 pm. The speaker for the evening is Kevin Creel of Barrick Exploration. He will be presenting a talk about the Cortez Hills, Lower Zone project. The sponsor for the evening is Electrum USA Ltd. For more information contact Jon Carlson, 775/529-5001 x2318, jcarlson@barrick.com.

January 17, Thursday

ELKO CHAPTER will have the monthly meeting at the Western Forklife Center. Social hour is 6:00 pm and talk at 7:00 pm. The speaker for the evening is Karl Marlowe. He will present a talk about "Getchell – the Original Carlin-Type Au Deposit." For more information contact Nancy Richter, 775/468-4527, nrichter@barrick.com.

January 18, Friday

GSN MEMBERSHIP MEETING will be held at the Reno Elks Lodge 597 Kumle Ln, Reno, NV, drinks at 6 pm, dinner at 7 pm, and talk at 8:00 pm. Speaker for the evening will be Brian Morris of Great Basin Gold on the Hollister project. Contact Kelly Parsons for reservations, 775/323-3500, gsn@gsnv.org.

January 31, Thursday

SOUTHERN NEVADA CHAPTER monthly meeting at the University of Nevada Las Vegas, Room 105 at 6:45 pm. Speaker is Lora Griffin. Title: "Mineralization Associated with Gold Deposition at Carlin-type Deposits: Getchell and Carlin Trends, Northern Nevada". For more information contact Lora Griffin at lora.griffin@unlv.edu.

GSN's December monthly meeting was well attended with 175 folks having dinner, and enjoying the holiday party, silent auction, and rock raffle.

FROM THE PRESIDENT

Greg Hill, *GSN President 2007-2008*

Happy 2008! It's amazing how quickly the time goes by, especially when you're making hay. 2007 has been a great year for the mining industry and Nevada geologists and much hay was harvested. Let's hope the sun shines a lot longer.

The annual GSN Foundation Rock Raffle and Silent and Live Auction was once again very successful, bringing in more than \$15,000 for the Foundation. Thank you to all of the generous individuals and companies that donated, organized, volunteered, and participated in this outstanding event. Dinner was served to 175 people and many more joined in for socializing and the like. Following dinner, members and their guests were treated to a discourse by the ghost of Mark Twain, aka McAvoy Layne.

continued on page 2

JANUARY MEETING SPONSOR

ALS Chemex

*We are a global analytical testing company
serving the mining and mineral exploration
industry in Nevada and around the world.*



Reno Tel: 775-356-5395 Fax: 775-355-0179	Elko 775-738-2054 775-738-1728	Winnemucca 775-625-4192 775-625-4178	Fairbanks 907-452-2188 907-452-2227
---	---	---	--

www.alschemex.com



News and Announcements

FROM THE PRESIDENT *continued from page 1*

As discussed previously in this space, the current fiscal year represents GSN's fiftieth in existence. Thanks to all that make this organization work. I am proud to be associated with the Society.

Many events are planned for 2008, the first of which will be a talk by Brian Morris of Great Basin Gold on the Hollister project (see abstract on page 3). I look forward to hearing about this interesting place and the progress being made in developing and exploring this property which has long been the focus of serious exploration. We have an interesting slate of speakers lined up for the remainder of the monthly meeting season as well. Planning for the Spring field trip is underway and planning for the 2010 Symposium is in full swing.

Here's looking forward to a great 2008!

Happy New Year!

GSN FOUNDATION NEWS

Roger Steininger, *Chair Foundation Board*

D.D. LaPointe and Rachel Dolbier, along with several volunteers did it again. They put on a fantastic auction and raffle at the GSN Christmas Party. This year was the best ever with a grand total of \$15,307. Thank you goes not only to D.D. and Rachel, but also to all of the groups that contributed items and especially the members who did their Christmas shopping at the event.

This money will add to the Foundation's financial base which supports the two UNR and one UNLV scholarships, and the over 50 requests that we received this year for K-12 field trip grants.

I cannot say thank you enough.

**VISIT THE GSN WEBSITE AT:
www.gsnv.org**



Dave Shaddrick and Terri Garside at the November meeting coffee table . . . or is it the bar?!!!

STATE OF NEVADA BOND POOL UPDATE

The State of Nevada Bond Pool continues to provide reclamation bonding for notice level activities on public land administered by the Bureau of Land Management. The Bond Pool, which is part of the Nevada Division of Minerals, has placed a statewide bond with the BLM and has bonds totaling \$1,169,511 in place covering 107 projects as of 12/19/07. Individual operator bonds are placed as riders to the Bond Pool's statewide bond. Because the Bond Pool statewide bond has been adjudicated by the BLM, the bonding process can be completed in a few hours. This can be very advantageous to an operator on a tight schedule. Operators are required to have a bond decision letter from the BLM, a cash deposit equal to 100% of the bond amount, and pay an annual premium equal to 3% of the bond amount. For more information about the State of Nevada Bond Pool, please contact Doug Driesner (775/684-7046) or Alan Coyner (775/684-7047) at the Nevada Division of Minerals, or visit the Division's website at minerals.state.nv.us.

Thanks to AGNICO-EAGLE (USA) Limited for hosting the December meeting.

GSN January 18, 2008 Membership Meeting

Date: Friday, January 18, 2008

Time: Social-6:00, Dinner-7:00 (\$17), Meeting-8:00

Reservations: 775/323-3500; fax 323-3599,
e-mail gsn@gsnv.org

Deadline: Reserve by 1 pm Thursday, January 17th

Location: Elks Lodge, 597 Kumle Lane, Reno, NV

Directions: Across (W) from the Reno-Sparks Convention Center (S Virginia St), behind the Les Schwab Tire Center

Speaker/topic: Brian Morris, Great Basin Gold, LTD.
See abstract below.

EXPLORATION AND DEVELOPMENT OVERVIEW AT THE HOLLISTER MINE, ELKO COUNTY, NEVADA

Brian Morris, Great Basin Gold, LTD

The Hollister mine is located 80 miles east of Winnemucca, Nevada, in Elko County. Hollister mine is an epithermal gold-silver resource and is situated on the eastern margin of the Northern Nevada Rift and in the east-central part of the Ivanhoe Mining District. Vein adularia has been dated at 15.19 +/- 0.05 Ma similar to other epithermal gold-silver deposits along the rift. Veins in the Hollister resource strike E-W to WNW and appear to have developed as ladder veins between strands of a major N10°W, left-lateral strike slip fault system. Both the veins and the strike-slip fault system are blind overlain by 250 to 500 feet of Tertiary volcanic cover.

Gold mineralization and hydrothermal alteration at Hollister are associated with an episode of bimodal volcanism between 16 and 14.9Ma consisting of rhyolite, basaltic andesite, felsic tuff and tuffaceous sedimentary rocks. This volcanic and volcanoclastic sequence was erupted onto a relatively low-relief unconformity. Pre-Miocene basement consists of interstratified quartzite and argillite of the Ordovician Vinini Formation.

Quartz-adularia veins are hosted by the Ordovician Vinini Formation (Valmy correlative) and are more or less centrally located beneath the extent of the disseminated mineralization in the Tertiary volcanic rocks. The veins terminate vertically at the Tertiary-Ordovician unconformity and the gold mineralization dissipates into disseminated form over a relatively small distance above the vein throats. An extensive, paleo-horizontal, chalcedonic silica cap is developed above the structural source of the mineralizing fluids.

An ongoing underground development drilling program has delineated proven and probable reserves of 868,500 tons grading 1.01 opt gold and 4.3 opt silver totaling 875,000 ounces gold and 4,300,000 ounces silver. Peripheral to the Hollister vein system, Great Basin Gold Limited is conducting a surface drilling program exploring for new vein structures.



ATTENTION ALL YOU INFORMATION SEEKERS!!

Check your libraries. If you are missing any field trip guidebooks check our website at www.gsnv.org for order forms.

- SP-6** N Carlin Trend, Big Springs: Bluestar, Genesis, Bootstrap, Post, & Dee Mines; Big Springs Property, 174 p. (1987) **\$35.00**
- SP-7** Hot Springs Gold Deposits of NW NV & SE OR: Florida Canyon; Sleeper; Quartz Mtn; Hog Ranch, 117 p. (1988) **\$35.00**
- SP-8** Gold Deposits of N-C NV: Marigold; Cove; McCoy; Rain; Surprise, 107 p. (1988) **\$18.00**
- SP-9** Geology & Mineral Deposits of White Pine County: Golden Butte; Robinson Mining District; Illipah; Nighthawk Ridge; Greensprings, 143 p. (1989) **\$35.00**
- SP-10** Geology & Gold Deposits of the Osgood Mtns, NV: Pinson; Preble; Chimney Creek, 104 p. (1989) **\$10.00**
- SP-11** Geology & Ore Deposits of the Sierra Nevada & Foothills: Mary Harrison Prospect; Royal Mtn, King, Lincoln, & Spanish Mines, 158 p. (1990) **\$35.00**
- SP-12** Carlin & Cortez Trends: Comparisons & Contrasts (Elko Chapter), 139 p. (1990) **\$20.00**
- SP-13** Tertiary Geol & Volc-hosted Au Deposits; S Great Basin & Vicinity: Lake Mead Region; Castle Mtns Mine; Halloran Springs & Nelson District, 138 p. (1991) **\$35.00**
- SP-14** Hawthorne Area-Central Walker Lane Structure & Tectonics: Wassuk Range, Pine Nut, Cedar Mtn, & Sheep Canyon Faults; Santa Fe-Isabella Area; Bettles Well Graben; Dicalite Detachment, 224 p. (1992) **\$30.00**
- SP-15** Reno Area-N Walker Lane Mineralization & Structure: Peavine, Wedekind, Pyramid, & Olinghouse Districts; Washington Hill, Antelope Valley & Talapoosa Deposits; Volcanic Stratigraphy, 207 p. (1992) **\$35.00**
- SP-16** Industrial Minerals & Gold Deposits Along I-80 Corridor: All-Lite Aggregate, Zeolite, & Argenta Barite Deposits; NV Cement Pit & Plant, CR Minerals Diatomite & Eagle-Picher Colorado Diatomite Pits Marigold & Lone Tree Mines, 180 p. (1992) **\$15.00**
- SP-17** Robinson Mining District Geol & Mineralization: (Elko Chapter), 82 p. (1993) **\$12.00**
- SP-18** Gold & Silver Deposits of W NV: Rochester, Florida Canyon, & Crofoot/Lewis Mines; Rosebud Deposit, 167 p. (1993) **\$30.00**
- SP-19** NE NV Breccia Bodies Symp (Elko Chapter), 90 p. (1993) **\$15.00**
- SP-20** Gold Deposits of the Central Walker Lane, NV: Talapoosa Deposit; Borealis, Paradise Peak, & Denton-Rawhide Mines, 224 p. (1994) **\$35.00**
- SP-22** Geology & Ore Deposits of Bodie Hills, N Mono Basin Region: Bodie Hills, Aurora District, 71 p. (1995) **\$10.00**
- SP-23** Geology & Gold Deposits of E NV: Bald Mtn & Mt. Hamilton Mines; Alligator Ridge; Robinson Project, 247 p. (1996) **\$35.00**
- SP-24** Geology & Ore Deposits of NW NV: Trenton Canyon Project; Lone Tree, Getchell, Twin Creeks, & Florida Canyon Mines, 192 p. (1996) **\$35.00**
- SP-25** Geology & Ore Deposits of NE NV: Cortez, Pipeline, Goldstrike, & Bootstrap Mines; Crescent Pit; W Leeville Project, 156 p. (1997) **\$35.00**
- SP-26** Low-Sulfidation Volcanic-hosted Epithermal Au-Ag Deposits, W-C NV: Rawhide & Round Mtn Mines; Three Hills Project, 246 p. (1997) **\$35.00**
- SP-27** Sediment-Hosted Au Deposits of Eureka, Ruby Hill Mine, Gold Bar District, E-C NV, 161 p. (1998) **\$35.00**
- SP-28** Shallow Expressions of Deep, High-Grade Au Deposits: NW Rain/Tess, W Bazza/Screamer, & SSX Deposits, 172 p. (1998) **\$45.00**
- SP-29** Low-Sulfidation Au Deposits in N NV: Olinghouse, Mule Canyon, & Midas Deposits, 220 p. (1999) **\$40.00**
- SP-30** Geology & Ore Deposits at Bingham Canyon, Barney's Canyon, Mercur & Adjacent Districts in the Oquirrh Range, UT (Elko Chapter), 143 p. (1999) **\$35.00**
- SP-31** Geology & Gold Mineralization of the Buffalo Valley Area, NW Battle Mtn Trend: Trenton Canyon, N Peak, Buffalo Valley, & Marigold Mines, Redline Gold Skarn Dep, Copper Canyon Gold Skarn-A Review, 272 p. (1999) **\$40.00**
- SP-32** Platinum Group Elements, High Grade Gold and History: The Sierra Nevada 2000, 185 p. (2000) **\$25.00**
- SP-33** Regional Tectonics & Structural Control of Ore: The Major Gold Trends of Northern NV, Battle Mtn Spring Field Conf, 448 p. (2001) **\$60.00**
- SP-34** Magmatism and Gold Deposits in North-Central Nevada - Variations on a Theme, McCoy/Cove, 219 p. (2001) **\$35.00**
- SP-35** Jurassic Magmatism and Metal Deposits in Western Nevada, Yerington Mining District & Humboldt Mafic Complex, 168 p. (2002) **\$35.00**
- SP-36** Precious Metal Deposits of the Humboldt Range, New Discoveries in an Old District, Florida Canyon & Standard Mines, Rochester & Packard Flat Mines, 192 p. (2002) **\$45.00**
- SP-37** Gold Deposits of the Goldfield, Midway, and Thunder Mountain Areas, 305 p. (2003) **\$45.00**
- SP-38** Regional Geology & Gold Deposits of the Silver Peak Area— Mineralization Hosted by Metamorphic Core Complexes, 211 p. with references, 206 without (2003) **\$40.00**
- SP-39** Gold Deposits of the Independence Mountains, Elko Co., NV. Jerritt Canyon & Big Springs Districts (sub-title), 189 p. plus 29 p. insert, total 218 p. (2004) **\$45.00**
- SP-40** New Discoveries, Exploration & Mining Activities Along the Central & Southern Battle Mtn – Eureka Trend, Lander & Eureka Counties, NV, 190 p. (2004) **\$45.00**
- SP-41** Volcanic Geology, Volcanology & Natural Resources of the Long Valley Caldera, CA, 213 p. + 4 fold out plates (2005) **\$40.00**
- SP-42** Geology & Mineral Resources of the Trinity, Seven Troughs, & Kamma Ranges, W-C NV, 154 p. (2006) **\$40.00**
- SP-43** Geology & Mineralization at Bald Mtn, E Archimedes, & S Eureka, NV, 146 p. (2006) **\$35.00**
- SP-44** Mine and Metallurgy Tours Along the Carlin and Battle Mountain Trends, NV, GSN/NWMA, 117 p. (2006) **\$30.00**
- SP-45** Geology of the Nevada test site, Yucca Mountain, and the Searchlight District, 238 p. (2007) **\$35.00**
- SP-46** Faults, Folds, & Mineral Belts: Regional Structure Systems, Gold Mineralization, & Exploration Potential in the Great Basin, 161 p. (2007) **\$45.00**

UPCOMING EVENTS

January 9, Wednesday – WINNEMUCCA CHAPTER will have the monthly meeting at the Martin Hotel beginning at 6:30 pm, talk to follow at 7:00 pm. The speaker for the evening is Kevin Creel of Barrick Exploration. He will be presenting a talk about the Cortez Hills, Lower Zone project. The sponsor for the evening is Electrum USA Ltd. For more information contact Jon Carlson, 775/529-5001 x2318, jcarlson@barrick.com.

January 17, Thursday – ELKO CHAPTER will have the monthly meeting at the Western Forklife Center. Social hour is 6:00 pm and talk at 7:00 pm. The speaker for the evening is Karl Marlowe. He will present a talk about "Getchell – the Original Carlin-Type Au Deposit." For more information contact Nancy Richter, 775/468-4527, nrichter@barrick.com.

January 18, Friday – GSN MEMBERSHIP MEETING will be held at the Reno Elks Lodge 597 Kumle Ln, Reno, NV, drinks at 6 pm, dinner at 7 pm, and talk at 8:00 pm. Speaker for the evening will be Brian Morris of Great Basin Gold on the Hollister project. Contact Kelly Parsons for reservations, 775/323-3500, gsn@gsnv.org.

January 31, Thursday – SOUTHERN NEVADA CHAPTER monthly meeting at the University of Nevada Las Vegas, Room 105 at 6:45 pm. Speaker is Lora Griffin. Title: "Mineralization Associated with Gold Deposition at Carlin-type Deposits: Getchell and Carlin Trends, Northern Nevada". For more information contact Lora Griffin at lora.griffin@unlv.edu.

GSN MEMBERS' NEWS AND ANNOUNCEMENTS

Career Related Moves

► **Craig Parkinson**, PG, CEM has recently joined the consulting firm West Coast Environmental and Engineering based in their Nevada City California office. Craig is the Mining Services Manager and specializes in NI 43-101 reports, feasibility studies, and regulatory compliance.

► **W. Dan Hausel**, Consulting Geologist, is the former Senior Economic Geologist and Deputy Director with the Wyoming Geological Survey. Dan has moved to Gilbert, Arizona and currently is the President of W. Dan Hausel Geological Consulting LLC and is the Vice President of Exploration for DiamonEx USA Ltd.

<http://danhauselauthor.pbwiki.com>.

Thank you to our generous donors

GSN would like to thank the following members for the generous donations to the Foundation and Student Dinner Funds:

GOLD LEVEL DONORS \$500+

Ed MacKevett's Estate Donation

SILVER LEVEL DONORS \$100-\$499

Fred Breit	Rich Lorson
Jon Foruria	Paul Schmidt

BRONZE LEVEL DONORS \$1-\$99

Jerry Dolence	Toby Mancuso
Herb Duerr	Donald Pietz
William Durbin	Duane Poliquin
Bill Houston	Michael Skopos
Hal Hurst	Tony Taylor
Ted Jochems	Brion Theriault
Daniel Laux	Donald Wagstaff
Ellie Leavitt	William Wilson

Student Dinner Fund

J. Kelly Cluer	Paul Kahn
Herb Duerr	Ellie Leavitt
William Durbin	Rich Lorson
David Fitch	Jay Olcott
Mae Gustin	Michael Skopos
Richard Hipsley	Brion Theriault




Members are encouraged to keep us informed about their own career related moves and awards, and deaths of GSN colleagues. Your information needs to be received by Kelly at gsn@mines.unr.edu by the 21st of each month.

SERVICIOS HIDROGIS
GEOGRAPHIC INFORMATION SYSTEMS

Dirk Masuch Oesterreich (Geologist, Proprietor)
A.P. 107; Carretera a Galeana, km. 4
Linares, Nuevo León, México, C.P. 67700
Tel.: +52 821 212 5908, +52 821 212 8311
www.servicioshidrogis.com

Please ask for our maps and GIS database of stock exchange listed mining companies in Nevada
info@servicioshidrogis.com



MINERAL EXPLORATION SERVICES

**SOIL SAMPLING
CLAIMSTAKING
PROPERTY EVALUATION
MINE HAZARD FENCING**

5655 Riggins Ct., #15, Reno, NV 89502
Tel: (775) 954-1082 Fax: (775) 829-6882
email: day@mineralexploration.com

Fire Assay
ICP - OES
ICP - MS
AAS
Custom Preparation
Bullion Analyses
BLEG


Corporate Office
1500 Glendale Avenue
Sparks, NV U.S.A. 89431-5902
Telephone (775) 356-0606
Fax (775) 356-1413

Chris Ioannakis, Managing Director,
Analytical Services

Elko Office
2320 Last Chance Road
Elko, NV U.S.A. 89801-4852
Telephone/Fax (775) 738-9100

E-mail: AALADMIN@aallabs.net
Website: www.aallabs.com

**American
Assay &
Environmental
Laboratories**



MINING SERVICES
CarlinTrend
Sampling • Staking • Surveys

**Carlin Trend Mining
Supplies & Service**

www.carlintrend.com

369 5th St., Elko, NV 89801
(775) 778-0668, Fax: (775) 778-0687, carlintrend@frontiernet.net

Geological Consulting - Claim Staking - Soil Sampling
Geology & Drafting Supplies - AutoCad & GIS
Temporary Employees In All Fields

ALS Chemex

We are a global analytical testing company serving the mining and mineral exploration industry in Nevada and around the world.

We specialise in:

- Assaying and geochemical analysis for mining and mineral exploration projects
- On-site contract mine laboratory management
- Environmental monitoring of mining operations
- Acid mine drainage studies

Contact our laboratories in Nevada to find out how we can help you with all of your project's analytical needs.


RENO, NV
Phone: 775 356 5395

ELKO, NV
Phone: 775 738 2054

WINNEMUCCA, NV
Phone: 775 625 4192

www.alschemex.com

*Right solutions....
....Right partner*



sample Bags

HUGE INVENTORY  LOW, LOW PRICES

NEW ADDRESS!
LEGEND, INC.

988 Packer Way
Sparks, NV 89431

Off Glendale east of McCarran
phone: (775) 786-3003
fax: 786-3613
www.Lmine.com
email: info@Lmine.com


Enviroscientists, Inc.

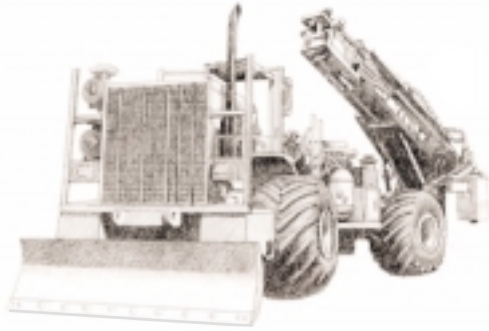
4600 Kietzke Lane, Suite C 129, Reno, Nevada 89502
Phone: (775) 826-8822 Fax: (775) 826-8857

**Notices, Plans of Operations,
Cost Estimates, TRI, Biological Surveys,
Air Quality Permits & Audits**

Info@enviroincus.com www.enviroincus.com



DIVERSIFIED DRILLING, LLC

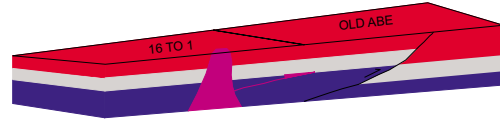


Providing Drilling Services To The Mining/Metals Industry Since 1980

3650 Grant Creek Road
Missoula, Montana 59808
Phone: (406) 542-1010 Fax: (406) 542-5065
www.diversifieddrilling.com

GIS Land Services

Greg Ekins M.S. R.L.P. #32306 President
Mineral Landman - GIS Cartographer



Surface Title
Mineral Title

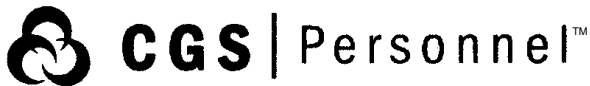
"From Courthouse Records to Final Map"

- Land Status Maps
- AutoCad Map
- Geologic
- Arc Map
- Geo Chem
- Mapinfo
- Discover
- Power Point



5365 Mae Anne Ave B-14A
Reno, NV 89523
P:775-746-8803
P:775-746-2110
F:775-746-8802
E:greg@gislandsservices.com

www.gislandsservices.com



DIXIE BULLOCK
DISTRICT MANAGER

WILMA HATTER
SERVICE REPRESENTATIVE
HATTERW@SOSSTAFFING.COM

390 East Moana Ln., Ste. 2
RENO, NV 89502
T. 775.331.5227 F. 775.323.7772
WWW.SOSSTAFFING.COM

A Division of SOS Staffing Services, Inc.

Big Sky Geophysics

Clark Jorgensen, M.Sc.
Geophysicist

*Field Work
Processing
Interpretations*

P.O. Box 353
Bozeman, MT 59771
USA

Phone: (406) 587-6330
Fax: (406) 587-6394
Mobile: (406) 580-9718
clark@bigskygeo.com

**For more details, my background, and case studies,
visit my webpage at www.bigskygeo.com**



WESTERN RECON
and
Mineral Exploration Inc.
Claim Staking / Soil Sampling / Grids
Experienced / Dependable/ Trimble GPS
Gary Castagne 775-250-4879
John Fernandez 775-815-2587

www.westernrecon.com

**GSN Newsletter
Monthly Advertising Rates**

Business card size (3 1/2 x 2")	\$ 50.00
Quarter page (3 1/2 x 4 3/4")	150.00
Half page (4 3/4 x 7 1/2")	300.00
Classified ads \$10/line (up to business card size)	

For an advertising form, call the GSN office at 775/323-3500 or fax 323-3599. Digital or text ads must be received by the 20th of the month to appear in the following month's newsletter.

GEOLOGICAL SOCIETY OF NEVADA



gsn@gsnv.org • www.gsnv.org
Telephone (775) 323-3500 FAX (775) 323-3599
Post Office Box 13375
Reno NV 89507
USA

NON PROFIT
ORGANIZATION
U.S. POSTAGE
PAID
RENO, NV
PERMIT NO. 931

Jo Beth Allen Professional Graphics

CAD Drafting/Digitizing/Scanning
High Resolution Presentation Graphics
Plotting/Printing
Geologist

1055 Joshua Drive Phone: 775-324-7960
Reno, Nevada 89509 Fax: 775-324-7583
jobeth@yellowsb.net



JOSEPH R. ANZMAN

Exploration Geophysicist

- consulting
- interpretation
- project management
- geophysical surveys
- domestic & foreign

P.O. Box 370526
Denver, Colorado 80237
303-337-4559
telephone/fax

HOWARD J. ADAMS
President

HARD ROCK WHEELS, INC.

4WD Pickup Rentals

14756 Pine Knolls Ln
Reno, Nevada 89521
(775) 852-2622
Fax (775) 852-2075

MIKE TOLBERT
2700 S. Cushman St.
Fairbanks, AK 99701
(907) 452-6631



ENVIRONMENTAL SERVICES
FOR THE MINING INDUSTRY

environmental consultants, inc.

- Baseline Studies
- Environmental Permitting
- Monitoring & Compliance
- Reclamation & Closure Plans
- Investigation & Remediation

Elko Location
775-738-8766

www.jbrenv.com

Reno and Salt Lake City locations