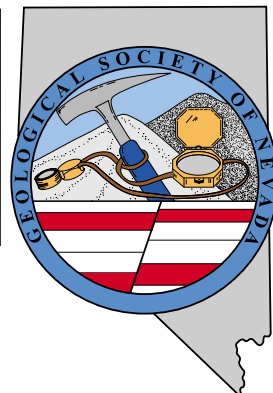


GSN NEWSLETTER

Geological Society of Nevada, PO Box 13375, Reno, NV 89507 USA, 775/323-3500, www.gsnv.org
Office location: Laxalt Mineral Research Center, Rm 266, UNR. Hours: Mon thru Fri, 9-4



October 2007, Vol. 22, No. 8

Published monthly except June and July

PRESIDENT

Greg Hill
Harvest Gold Corp. (US)
hillgreg@charter.net

VICE PRESIDENT

Marcus Johnston
Victoria Resources US Inc
marcus@apexmineralresources.com

SECRETARY

Leslie Olmstead
Agnico-Eagle (USA) Limited
lholmstead@agnico-eagle.com

TREASURER

Camille Prens
Mine Development Associates
cami@mda.com

MEMBERSHIP CHAIR

Opal Adams
Enviroscientists, Inc.
ofadams@enviroincus.com

PUBLICATION CO-CHAIRS

Marilyn Miller
Consulting Geologist
marilyn.miller1@sbcglobal.net

Debbie Schneider

Schneider and Schneider Assoc
dschneider41@charter.net

OFFICE MANAGER

Rhonda Bayley
gsn@gsnv.org

CALENDAR OF GSN EVENTS

October 7th, Sunday

GSN Annual Picnic will be held at Rancho San Rafael Park beginning at 1:00 pm.
See page 2 for sign up form.

October 9th, Wednesday

WINNEMUCCA CHAPTER: Martin Hotel, beginning at 6:30 pm. Our speaker is Brian Morris of Great Basin Gold, LTD. Title: "Exploration and Development Overview at the Hollister Mine, Elko, County, NV". See page 8 for abstract.

October 19th, Friday

GSN MEMBERSHIP MEETING: Reno Elks Lodge, 597 Kumle Ln, Reno, NV. Drinks at 6 pm, dinner at 7 pm, talk at 8 pm featuring Raul Madrid with a tribute to Ralph Roberts. Sponsored by Victoria Resources. Contact Rhonda Bayley for reservations, 775/323-3500, gsn@gsnv.org.

October 25th, Thursday

SOUTHERN NEVADA CHAPTER: Patrick Haynes Minerals of the Frederickson Mine, Goodsprings, NV.

October 18th, Thursday

ELKO CHAPTER: Our speaker will be Lee Sampson, Barrick Exploration, Elko, NV. Title: "Models and Exploration Methods for Major Gold Deposit Types". Sponsored by SGS.

IT'S DUES RENEWAL TIME! See page 11 for form.

FROM THE PRESIDENT

Greg Hill, *GSN President 2007-2008*

The GSN events season is once again in full swing. In September, the first monthly membership meeting in Reno and the fall field trip were conducted. Both had good turnouts and were opportunities to catch up with friends and colleagues while learning about Nevada geology.

Roger Steininger spoke at the Reno meeting, giving a history of the Geological Society of Nevada together with the evolution of gold exploration in the Great Basin. As the Society enters its fiftieth year it is interesting to take a look back. It's clear that the GSN has been well supported throughout this period and that support is as strong as ever. Thanks to our generous September sponsor **Eklund Drilling Company**.

Marcus Johnston organized and led a fine field trip with visits to mines on the Carlin, Getchell, and Battle Mountain-Eureka trends. A new field trip guidebook was produced with several original articles and updated road logs. This field trip was offered to participants of the Arizona Geologic

OCTOBER MEETING SPONSOR



**Victoria
Resource
Corp.**

240 South Rock Blvd., Suite 117
Reno, NV 89502

Phone: 775-856-4477, Fax: 775-856-4479

Society in conjunction with their Ores and Orogenesis symposium. Thanks to the AGS for helping to promote the trip and facilitating the participation of AGS symposium attendees. We are grateful to all of the sponsors that contributed

continued on page 2



News and Announcements

FROM THE PRESIDENT *continued from page 1*

funds to GSN for the trip. Thanks to Boart Longyear, Marilyn Miller, Dwight Juras, Keith Blair, Marcus Johnston, Brian Goss, and all the other companies that contributed.

As you know, Ralph Roberts recently passed away. Raul Madrid will speak at the October membership meeting in Reno where he will discuss the pioneering life and work of Ralph Roberts and the significant contributions Ralph made to our understanding of Great Basin geology. Please plan to attend as we pay tribute to and memorialize this great geologist. See you in October.

GSN FOUNDATION NEWS

Roger C. Steininger, *Executive Director, GSN Foundation*

A contribution of \$4,000 was received from AIPG to support the Foundation's K-12 Field Trip program. As part

of the grant GSN will add a \$2,000 match. Thank you to both organizations.

As of late September our membership has contributed over \$2,000 to the Foundation as part of renewing their due. The original goal of the Foundation was to have an endowment of \$250,000 so that the programs are self funding. I would like to see the endowment closer to \$1 million so that we can expand our programs, not just maintain them. This will take an effort on all our parts. If you have suggestions for groups to contact outside of the membership please send them to me. Thank you again for the contributions.

The silent auction at the GSN Christmas meeting is a primary fund raiser for the Foundation. We are looking for interesting contributions that will be good fundraisers. Details for making contributions for the silent auction will be available in the next newsletter. This note is to start the creative juices flowing to make this year's auction a success.

GSN'S 19th ANNUAL FAMILY PICNIC

Rancho San Rafael, Highlands Pavillion

Sunday, October 7, 2007

The 19th annual GSN Family Picnic will be held on Sunday, October 7 at the Highland Pavilion at Rancho San Rafael, Reno, NV, starting at noon and wrapping up around 4:00 pm. We'll provide the meat, beer, and games; you bring a side dish, a competitive spirit, and possibly a spouse and kids! If you are single, bring a friend! Only \$5 a person and \$10 per family. Please contact Rhonda Bayley before October 5th if you plan on attending and let her know how many will be in your party so we can have enough meat and beer! We look forward to seeing you on October 7th.

Name: _____

Total # family members or guests in your party: _____

Ages of children: _____

Address: _____

City/State/Zip: _____ Daytime phone: _____

Bringing salad: _____ vegetable: _____

or desert: _____

Enclosing: **\$10.00 per family** or **\$5.00 per single**

Credit Card # _____ or Check # _____

Please mail to:

**Geological Society of Nevada, PO Box 13375, Reno, NV 89507,
or fax to: 775/323-3599**

**Thanks to Eklund Drilling Company, Inc.
for hosting the September meeting.**

GSN October 19, 2007 Membership Meeting

Date: Friday, October 19, 2007

Time: Social-6:00, Dinner-7:00 (\$17), Meeting-8:00

Reservations: 775/323-3500; fax 323-3599,
e-mail gsn@gsnv.org

Deadline: Reserve by 1 pm Thursday, October 18th

Location: Elks Lodge, 597 Kumle Lane, Reno, NV

Directions: Across (W) from the Reno-Sparks Convention Center (S Virginia St), behind the Les Schwab Tire Center

Speaker/topic: Raul Madrid, Victoria Resources, US.
See abstract below.

Dr. Ralph J. Roberts, His Quest for Science and Gold

Dr. Ralph J. Roberts leaves behind a legacy of excellence in scientific endeavor, overcoming scientific challenges, and the development of predictions within the framework of the gold industry. He also leaves behind the idea that one man, one scientist, one gold explorationist, can truly make a difference.

Ralph is famous for his astuteness and contributions in geologic mapping and the deduction of major geological paradigms that have held up through the test of time. His predictions also stand out in the field of gold exploration not only in the United States, but also abroad.

He conducted pioneer geologic mapping as part of his long and coveted career with the U.S. Geological Survey, within which he spent a major part of his life. As a USGS scientist, his deduction of the Antler Orogeny, defined by the over-thrusting of the deep-water derived Roberts Mountains allochthon over coeval shallower water carbonate assemblages, was nothing short of miraculous and due to his constant devotion to objective geologic mapping. His persistence in this major geologic paradigm clearly reflects his excellence in pursuing scientific research. During his tenure for the USGS in Saudi Arabia, he punctuated his last years with the USGS by rediscovering Mahd ahd Dhab. This ancient gold mine rekindled his simmering excitement for the challenge of gold exploration, which he finally decided to pursue on his return to the U.S.

Retiring from the U.S. Geological Survey in 1981, at age 70, he launched his second career that focused on his ever-increasing passionate search for gold. His paper entitled, "The Alinement of Mining Districts in North-Central Nevada", written in 1960, became one of the most important paradigms that he pursued throughout his life and which predicted major, regional gold belts that have become the site of some of the largest gold mines in the world. During the period, 1981 to 1994 Ralph became involved in advising companies who were searching for gold systems in Nevada. He continued to pursue the alignment of mining districts throughout this period and was instrumental in the discovery of several gold deposits.

In 2002, the University of Nevada Press published his autobiography, *A Passion for Gold*. This book, although comprehensive to a point, does not come close to defining Ralph's career as many friends and colleagues can attest. One of the most important contributions of Ralph was the delineation of additional gold belts in Nevada and Utah. These additional gold belts, were defined over a period of over 13-14 years with an associate, and will be the focus of exploration in the future. Ralph's book is the beginning not the end to his biography.

We all miss him.

ACTIVITY UPDATE

Mike Brady, August 2007
www.activityupdate.com

NEVADA

Uranium King Ltd. announced that based on recent drill results at the Apex Project, resources aggregate 1,100,000 tons @ 0.07% U3O8 inferred. (no previous estimate)

M.J.: July 27

Newmont Mining Corp. announced that the start-up of the Phoenix Mine is experiencing some lower-than-expected ore grades; tailings line restrictions, harder-than-anticipated ore and lower mill availability although optimization studies are ongoing. (reserve = 174,177,000 tons @ 0.17% Cu, 0.034 opt Au, 0.32 opt Ag proven+probable)

P.D.: June 2007

Zincore Metals Inc. announced that it acquired an option to earn a 51% interest in the Antelope Zinc Property from AuEx Ventures Inc. for \$1,000,000 in exploration expenditures over 4 years.

Press Release: July 31

Consolidated Gold Win Ventures Inc. announced that recent drill results at the Dolly Varden Project include 198.7-199.2 feet @ 1.14% Pb, 0.24% Zn (DV07-07); 286-288 feet @ 0.29% Cu (DV07-08) and 625-630 feet @ 0.11% Cu (DV07-09).

Press Release: July 25

Gold Canyon Resources Inc. announced that recent drill results at the Cordero Project include 145-300 feet @ 94.8 g/t Ga (C151); 0-85 feet @ 46.6 g/t Ga (C152); 40-145 feet @ 54.1 g/t Ga (C153); 205-230 feet @ 48.0 g/t Ga (C154) and 45-65 feet @ 49.8 g/t Ga (C156).

Press Release: August 20

Midway Gold Corp. announced that recent drill results at the South Pan Project include 270-315 feet @ 0.016 opt Au (PN07-37); 155-190 feet @ 0.019 opt Au (PN07-38); 45-70 feet @ 0.021 opt Au (PN07-42); 120-180 feet @ 0.022 opt Au (PN07-42); 20-110 feet @ 0.029 opt Au (PN07-47) and 45-90 feet @ 0.023 opt Au (PN07-30). (resource @ Pan = 17,900,000 tons @ 0.019 opt Au indicated)

Press Release: August 10

Yukon-Nevada Gold Corp. announced that recent underground drill results at the Jerritt/West Dash Project include 10-35 feet @ 0.673 opt Au (C70023); 0-30 feet @ 0.731 opt Au (C70034); 0-65 feet @ 0.680 opt Au (C70035) and 0-20 feet @ 0.389 opt Au (C70053). (reserve @ Jerritt = 2,000,000 tons @ 0.25 opt Au proven+probable)

Press Release: August 7

Yukon-Nevada Gold Corp. announced that recent surface drill results at the Jerritt/Smith Project include 1,125-

1,140 feet @ 0.399 opt Au (SH-1165A); 890-920 feet @ 0.245 opt Au (SH-1169A) and 975-995 feet @ 0.246 opt Au (SH-1169A). (reserve @ Jerritt = 2,000,000 tons @ 0.25 opt Au proven+probable)

Press Release: August 7

Romarco Minerals Inc.(60%) announced that recent drill results at the Pine Grove Project include 493-612 feet @ 0.007 opt Au (PG-36C) and 808-1,003 feet @ 0.032 opt Au (PG-36C).

Press Release: July 25

Western Uranium Corp. announced that recent drill results at the Kings Valley Project include 39.6-106.7 meters @ 0.073% U3O8 (KV-22); 91.4-106.7 meters @ 0.021% U3O8 (KV-23); 123.4-160 meters @ 0.036% U3O8 (KV-23) and 71.6-82.3 meters @ 0.020% U3O8 (KV-28).

Press Release: August 2

Galway Resources Ltd. announced that based on recent drill results at the Indian Springs Project, resources aggregate 11,880,000 tons @ 0.171% WO3 indicated and 9,020,000 tons @ 0.167% WO3 inferred. (was 17,400,000 tons @ 0.190% WO3 inferred)

Press Release: August 6



GSN MEMBERS' NEWS AND ANNOUNCEMENTS

Career Related Moves

► Jerry Baughman has recently joined Gryphon Gold Corp. as its Vice President of corporate development. Jerry will be working primarily on new acquisitions in the Great Basin.

Births

► **Brian Park-Li and his wife welcome their first child.** Peter Hiro Park-Li was born on September 13, 2007. He weighed 6 pounds 13 ounces.

Members are encouraged to keep us informed about their own career related moves and awards, and deaths of GSN colleagues. Your information needs to be received by Rhonda at gsn@gsnv.org by the 20th of each month.

SERVICIOS HIDROGIS
GEOGRAPHIC INFORMATION SYSTEMS

Dirk Masuch Oesterreich (Geologist, Proprietor)
A.P. 107; Carretera a Galeana, km. 4
Linares, Nuevo León, México, C.P. 67700
Tel.: +52 821 212 5908, +52 821 212 8311
www.servicioshidrogis.com



Please ask for our maps and GIS database of stock exchange listed mining companies in Nevada
info@servicioshidrogis.com

MINERAL EXPLORATION SERVICES

**SOIL SAMPLING
CLAIMSTAKING
PROPERTY EVALUATION
MINE HAZARD FENCING**

5655 Riggins Ct., #15, Reno, NV 89502
Tel: (775) 954-1082 Fax: (775) 829-6882
email: day@mineralexploration.com

ALS Chemex



We are a global analytical testing company serving the mining and mineral exploration industry in Nevada and around the world.

We specialise in:

- Assaying and geochemical analysis for mining and mineral exploration projects
- On-site contract mine laboratory management
- Environmental monitoring of mining operations
- Acid mine drainage studies

Contact our laboratories in Nevada to find out how we can help you with all of your project's analytical needs.

RENO, NV
Phone: 775 356 5395

ELKO, NV
Phone: 775 738 2054

WINNEMUCCA, NV
Phone: 775 625 4192

www.alschemex.com

*Right solutions....
....Right partner*

sample Bags

HUGE INVENTORY  LOW, LOW PRICES

NEW ADDRESS!
LEGEND, INC.

988 Packer Way
Sparks, NV 89431

Off Glendale east of McCarran
phone: (775) 786-3003
fax: 786-3613
www.Lmine.com
email: info@Lmine.com



Enviroscientists, Inc.

4600 Kietzke Lane, Suite C 129, Reno, Nevada 89502
Phone: (775) 826-8822 Fax: (775) 826-8857

**Notices, Plans of Operations,
Cost Estimates, TRI, Biological Surveys,
Air Quality Permits & Audits**

Info@enviroincus.com www.enviroincus.com

Fire Assay
ICP - OES
ICP - MS
AAS
Custom Preparation
Bullion Analyses
BLEG

Corporate Office
1500 Glendale Avenue
Sparks, NV U.S.A. 89431-5902
Telephone (775) 356-0606
Fax (775) 356-1413

Chris Ioannakis, Managing Director,
Analytical Services

Elko Office
2320 Last Chance Road
Elko, NV U.S.A. 89801-4852
Telephone/Fax (775) 738-9100

E-mail: AALADMIN@aallabs.net
Website: www.aallabs.com

**American
Assay &
Environmental
Laboratories**



**Carlin Trend Mining
Supplies & Service**

www.carlintrend.com

369 5th St., Elko, NV 89801
(775) 778-0668, Fax: (775) 778-0687, carlintrend@frontiernet.net

Geological Consulting - Claim Staking - Soil Sampling
Geology & Drafting Supplies - AutoCad & GIS
Temporary Employees In All Fields



WESTERN RECON
and
Mineral Exploration Inc.

Claim Staking / Soil Sampling / Grids
Experienced / Dependable/ Trimble GPS
Gary Castagne 775-250-4879
John Fernandez 775-815-2587

www.westernrecon.com

HOWARD J. ADAMS
President

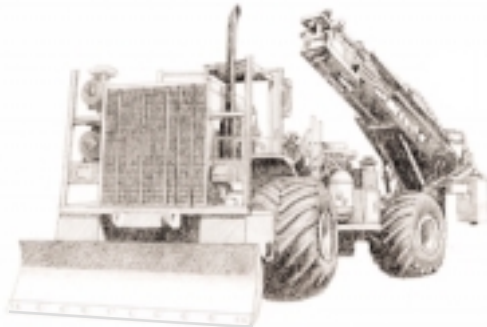
HARD ROCK WHEELS, INC.
4WD Pickup Rentals

14756 Pine Knolls Ln
Reno, Nevada 89521
(775) 852-2622
Fax (775) 852-2075

MIKE TOLBERT
2700 S. Cushman St.
Fairbanks, AK 99701
(907) 452-6631



DIVERSIFIED DRILLING, LLC



*Providing Drilling Services To The
Mining/Metals Industry Since 1980*

3650 Grant Creek Road
Missoula, Montana 59808
Phone: (406) 542-1010 Fax: (406) 542-5065
www.diversifieddrilling.com

Jo Beth Allen
Professional Graphics

CAD Drafting/Digitizing/Scanning
High Resolution Presentation Graphics
Plotting/Printing
Geologist

1055 Joshua Drive
Reno, Nevada 89509

Phone: 775-324-7960
Fax: 775-324-7583

jobeth@yellowsb.net



**ENVIRONMENTAL SERVICES
FOR THE MINING INDUSTRY**

environmental consultants, inc.

- Baseline Studies
- Environmental Permitting
- Monitoring & Compliance
- Reclamation & Closure Plans
- Investigation & Remediation

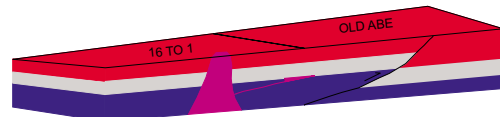
Elko Location
775-738-8766

www.jbrenv.com

Reno and Salt Lake City locations

GIS Land Services

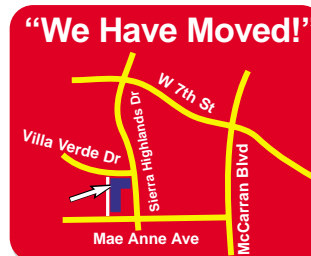
Greg Ekins M.S. R.L.P. #32306 President
Mineral Landman - GIS Cartographer



Surface Title
Mineral Title

"From Courthouse Records to Final Map"

- Land Status Maps
- Geologic
- Geo Chem
- AutoCad Map
- Arc Map
- Mapinfo
- Discover
- Power Point



5365 Mae Anne Ave B-14A
Reno, NV 89523
P:775-746-8803
P:775-746-2110
F:775-746-8802
E:greg@gislandservices.com

www.gislandservices.com



DIXIE BULLOCK
DISTRICT MANAGER

WILMA HATTER
SERVICE REPRESENTATIVE
HATTERW@SOSSTAFFING.COM

390 East Moana Ln., Ste. 2
RENO, NV 89502
T. 775.331.5227 F. 775.323.7772
WWW.SOSSTAFFING.COM

A Division of SOS Staffing Services, Inc.

Big Sky Geophysics

Clark Jorgensen, M.Sc.
Geophysicist

*Field Work
Processing
Interpretations*

P.O. Box 353
Bozeman, MT 59771
USA

Phone: (406) 587-6330
Fax: (406) 587-6394
Mobile: (406) 580-9718
clark@bigskygeo.com

**For more details, my background, and case studies,
visit my webpage at www.bigskygeo.com**

*Thank you to our
generous donors*

GSN Foundation

GOLD LEVEL DONORS \$500+

Roger C. Steininger

SILVER LEVEL DONORS \$100-\$499

Ronald L. Parratt
Dan Rovig
Pamela Klessig
Charles Weakly
David Slemmons
Richard L. Nielsen

BRONZE LEVEL DONORS \$1-\$99

Christopher Magee
Boies Hall
Steve Barnwell
Richard Harris
Eric Sedoff
David L. Lorge
Virginia Gillerman
John E. (Jack) Frost
Amanda M. Mullen

Student Dinner Fund

Ronald L. Parratt
Dan Rovig
Pamela Klessig
Charles Weakly
Dana Willis
Mae Gustin
John E. (Jack) Frost

UPCOMING EVENTS

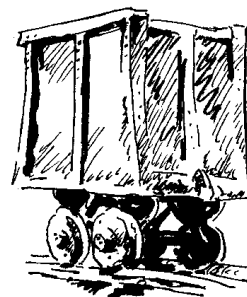
October 19, Friday – GSN MEMBERSHIP MEETING: Reno Elks Lodge, 597 Kumble Ln, Reno, NV. Drinks at 6 pm, dinner at 7 pm, talk at 8 pm featuring Raul Madrid with a tribute to Ralph Roberts. Sponsored by Victoria Resources. Contact Rhonda Bayley for reservations, 775/323-3500, gsn@gsnv.org.

October 7 – GSN Annual Picnic Ranch San Rafael Park 1:00 pm – 6 pm. Cost is \$5.00. Register now. See page 2 for more information and sign up form.

October 9 – WINNEMUCCA CHAPTER MEETING. Martin Hotel, beginning at 6:30 pm. Speaker: Brian Morris of Great Basin Gold, LTD. Title: "Exploration and Development Overview at the Hollister Mine, Elko County, NV.

December 3-7 – 113 NWMA Annual Meeting and Expo, Spokane Washington. A brochure about this must-attend, year-end mining event is downloadable at www.nwma.org/pdf/.pdf.

December 8 – Southern Nevada Chapter has scheduled a joint Christmas Event with the Nevada Friends of Paleontology (FOP) for Saturday evening, December 8, 2007. The location has still not been finalized. The event will include a brief talk by the FOP on recent excavations at the Gilcrease Springs megafauna fossil site, a Silent Auction of "Things Geologic", and holiday refreshment.



GSN FALL 2007 FIELD TRIP SUMMARY

Marcus K. Johnston, *GSN Vice President*

The fall 2007 field trip focused on the structural controls on late Eocene gold belts in north-central Nevada, with some discussion also given to Miocene deposits along the northern Nevada rift. The trip was full, with 42 participants from around the world, including Australia, Canada, Mexico, Peru, and the United States. The trip proved highly successful, bringing together people, and their experiences and ideas, from a wide variety of backgrounds.

Day one began with a regional overview of late Eocene magmatic activity, mineralization, and structural controls on the distribution of ore, presented in the field by Marcus Johnston and Mike Ressel. Our first tour was at Newmont Mining Corporation's Twin Creeks mine, where Jim Wise and Pat Donovan presented a detailed overview of this deposit. We managed several stops in the Mega Pit, where we were able to discern some of the major ore-controlling structures, including north-south-striking faults and the Conelea anticline. Our second tour was at Barrick Gold Corporation's venerable Getchell mine complex, where we observed the north-northwest-striking Getchell fault, a major ore-controlling structure. Keith Wood did an excellent job of summarizing a very complex depositional and structural history for the host units at Getchell and Turquoise Ridge. Back in Battle Mountain, we enjoyed dinner at the Owl Club, and then a slide presentation of "Structural Systematics" by Raul Madrid. Thanks to the following sponsors for day one: 1) Victoria Resources US Inc. picked up the tab for lunch, 2) Great Basin Brewery supplied the beer for the bus, and 3) Connors Drilling LLC provided the dinner.

Day two began with another regional overview, this time by Raul Madrid, focused on some of the major structural components that helped form the Battle Mountain-Eureka and Carlin gold belts. We then traveled to Barrick Gold Corporation's Pipeline mine, where Bob Leonardson and Kevin Creel presented details of the operations at Pipeline and Cortez, as well as the progress at the Pediment and Cortez Hills deposits. Bob and Kevin led a tour of the mined-out Ada 52 pit at Cortez, where we were able to observe intimate associations between mineralization and a late Eocene dike-sill complex. We then traveled to Elko, where we enjoyed dinner at the Western Folklife Center. Thanks to the following sponsors for day two: 1) Inspectorate Rocky Mountain Geochemical supplied the lunches, 2) Great Basin Brewery supplied the beer for the bus, 3) Victoria Resources US Inc. picked up the tab for the bar, and 4) Keith Blair, Brian Goss, Marcus Johnston, Dwight Juras, and Marilyn Miller, who collectively sponsored the dinner.

We closed out the trip on day three with a tour of Newmont Mining Corporation's Gold Quarry mine. Jon Powell presented an excellent overview of the entire Maggie Creek district before leading us to the mine, where we managed two field stops. At stop one, we were able to observe many of the pre-, syn-, and post-mineral structures in this large open pit. At stop 2, we were able to put our hands on two of the major ore-controlling structures, fractures of the north-northwest-striking Deep Sulfide Feeder fault complex, and the northwest-trending Alta anticline.

The bus then headed back to Reno so that many of our new friends could make their flights down to Tucson for the Ores and Orogenesis symposium.

In all, the three days were full of information, nearly too much to digest! However, we thank all our field trip leaders for their hard work and input, and for providing up-to-the-moment details of the mining and exploration activities in this extremely well endowed region. Also, thanks to Newmont Mining Corporation and Barrick Gold Corporation for allowing access to the deposits, and to all of our participants.

A separate thanks is extended to Steve Barnwell, of Boart Longyear, for sponsoring Jessica Smith, a graduate student in economic geology at the University of Nevada – Reno. We're looking forward to seeing some of you again on the Spring 2008 field trip, which we're already working on!

WINNEMUCCA CHAPTER October 9th Meeting

Exploration and Development Overview at the Hollister Mine, Elko County, Nevada

The Hollister mine is located 80 miles east of Winnemucca, Nevada, in Elko County. Hollister mine is an epithermal gold-silver resource and is situated on the eastern margin of the Northern Nevada Rift and in the east-central part of the Ivanhoe Mining District. Vein adularia has been dated at 15.19 +/- 0.05 Ma similar to other epithermal gold-silver deposits along the rift. Veins in the Hollister resource strike E-W to WNW and appear to have developed as ladder veins between strands of a major N10°W, left-lateral strike slip fault system. Both the veins and the strike-slip fault system are blind overlain by 250 to 500 feet of Tertiary volcanic cover.

Gold mineralization and hydrothermal alteration at Hollister are associated with an episode of bimodal volcanism between 16 and 14.9Ma consisting of rhyolite, basaltic andesite, felsic tuff and tuffaceous sedimentary rocks. This volcanic and volcanoclastic sequence was erupted onto a relatively low-relief unconformity. Pre-Miocene basement consists of interstratified quartzite and argillite of the Ordovician Vinini Formation.

Quartz-adularia veins are hosted by the Ordovician Vinini Formation (Valmy correlative) and are more or less centrally located beneath the extent of the disseminated mineralization in the Tertiary volcanic rocks. The veins terminate vertically at the Tertiary-Ordovician unconformity and the gold mineralization dissipates into disseminated form over a relatively small distance above the vein throats. An extensive, paleo-horizontal, chalcedonic silica cap is developed above the structural source of the mineralizing fluids.

An ongoing underground development drilling program has delineated proven and probable reserves of 868,500 tons grading 1.01 opt gold and 4.3 opt silver totaling 875,000 ounces gold and 4,300,000 ounces silver. Peripheral to the Hollister vein system, Great Basin Gold Limited is conducting a surface drilling program exploring for new vein structures.



THE FOLLOWING PUBLICATIONS ARE NEW AT NBMG

New publications at NBMG

The following publications are now available at NBMG:

USGS Data Series 249 - Crafford, A.E.J., 2007, Geologic Map of Nevada: U.S. Geological Survey Data Series 249, 1 CD-ROM that includes ArcGIS map files (.mxd and data files), an explanation file (.pdf), and a 46-page pamphlet (.pdf).

This CD-ROM is described in an abstract at <http://pubs.usgs.gov/ds/2007/249/>, which states: "The purpose of the Geologic Map of Nevada is to provide an integrated set of digital geologic information that can be used for regional geologic and rigorous spatial analysis."

This CD-ROM can be ordered at <http://www.nbmг.unr.edu/sales/pbsdtls.php?sku=DS-249> for \$32.00.

1:250,000-Scale Geologic Maps of Nevada (2007)

The Geologic Map of Nevada (Crafford, 2007, USGS DS-249) described above has been divided into seven 1:250,000-scale, 47x36" printed maps that are available separately for \$18.00 each or as a set of eight (including the explanation sheet) for \$100.

The explanation sheet with a correlation diagram is also available for \$18.00 or can be downloaded for free from <http://pubs.usgs.gov/ds/2007/249/>. Please note that there may be color variations among sheets plotted on different plotters.

These sheets can be ordered at <http://www.nbmг.unr.edu/sales/pbsdtls.php?sku=GMN>, which has a map showing the coverage of each of the seven sheets. The sheets are available either rolled or folded.

New discounts available from NBMG

NBMG has a new discount schedule available for the general public for ten or more copies of the same NBMG publication. Select items are available at a 41% or greater discount, and others at a 20% discount. There is no discount given for on-demand publications, Open-File Reports, or photocopies. Please click here for more information on these discounts: <http://www.nbmг.unr.edu/sales/discount.pdf>

Other Information From NBMG

We have free paper copies available of the following map: Ecoregions of Nevada
http://www.epa.gov/wed/pages/ecoregions/nv_eco.htm
If you would like a copy or multiple copies, we can send you single copies of the map for free with an order or you can pick it up in our office. We can also mail you free copies without an order if you pay for shipping.

News from NBMG

Former student employee at NBMG, Laura Garchar, was one of four recipients of the national 2007 AIPG Student Scholarship. Congratulations, Laura!
www.aipg.org

The City of Reno and Mayor Cashell proclaimed Friday August 31, 2007 as Jack Hursh Day to honor Jack for all of the work he has done with Truckee Meadows Remembered and historic preservation. Jack Hursh is a Cartographer at the Nevada Bureau of Mines and Geology. Congratulations, Jack!
Please see related story at:
<http://www.unr.edu/nevadanews/detail.aspx?id=2178>

Announcing the Geologic Rock Wall of Nevada

A concept in sustaining study of the Earth Sciences

The Goal of the Geologic Rock Wall of Nevada (the rock wall) is to erect a structure as part of the developing Elko Peace Park that will educate people of all walks of life about geology. Using building stones collected from localities across the state the rock wall will represent a cross section of Nevada. Information will be collected describing the significance of each rock in the wall. This information will be available to park patrons and offer a window upon Nevada's diverse geologic landscape as they experience the wall.

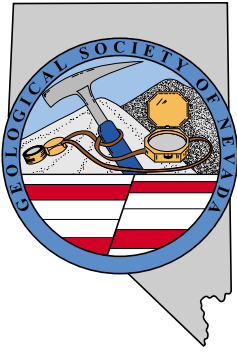
The remarkable aspect of the project is the far-reaching multimedia accessibility this fixed structure will have. All the data for each rock in the wall is being compiled into a visual intensive database. This database will also contain hot links that will clarify geologic concepts in a way that most will easily comprehend. The project description also includes compiling this database into a book that will be distributed to schools and libraries across the state. Visitors and educators who are located far from Elko will utilize this book to experience the rock wall and to develop lesson plans. Furthermore the database will be accessible on the World Wide Web and electronically at the information Kiosk planned for the park.

A piece of this project that is currently missing is you. Construction of the wall is a volunteer effort and it takes many hundreds of rocks to build. You can be a part of this project by contributing your special rocks from around the state. Here are some points to keep in mind when donating rocks:

- Rocks should be bolder-size (requiring 2 hands to move)
- Rocks should be durable and able to withstand repeated freeze-thaw cycles, rocks that absorb water like shales and sandstones will not work well
- Give all the information you can about the rock. For example: what kind of rock it is, where it is from, when it was collected, etc. The more info you can give the better!
- Rocks can tell interesting geologic stories, have historic value or simply look cool
- Each rock has value and your donations are tax deductible!

There are other ways to assist in this effort too. The project requires equipment, researchers, labor, and we are always in need of financial assistance.

To learn more or to become involved with this terrific project please contact Steve Kulinski at:
775-777-7959, IRGEOLOGIST@Yahoo.com



GEOLOGICAL SOCIETY OF NEVADA

P.O. Box 13375
 Reno, NV 89507 USA
 Phone (775) 323-3500 • Fax (775) 323-3599
 gsn@gsnv.org • www.gsnv.org

Offices are located on the University of Nevada, Reno Campus
 Laxalt Mineral Research Center, Room 266
 Office hours: 9-4 pm, Monday through Friday

Information About the Geological Society of Nevada

The Geological Society of Nevada (GSN) is a non-profit scientific society whose principal mission is to promote the advancement of the geological sciences, especially as they relate to Nevada. The GSN encourages the dissemination of scientific and practical knowledge through semiformal presentations, field trips and symposia as well as by publishing the literature resulting from these activities.

The majority of the over 900 GSN members are based in Nevada, but members live throughout the United States and in a number of foreign countries. The Society is made up of a broad spectrum of individuals interested in the earth sciences and the natural resource industries. Students are welcomed and encouraged to join and participate in the Society's activities.

The GSN holds dinner meetings, in Reno, on the third Friday of each month from September through May. Each meeting is highlighted by semiformal presentations by leading scientists from industry, academia and government. Abstracts of these talks are published in the monthly newsletter and in the membership directory. The membership directory is published annually and is a handy source of names, addresses, phone numbers and email addresses of individuals, companies, government agencies and service providers involved with the earth sciences.

The GSN fiscal year is from June to May. Annual membership fees are due in the Fall. The dues are used to pay for expenses for the entire GSN organization and its active Chapters in Elko, Southern Nevada and Winnemucca. Expenditures include publishing and mailing the newsletter and directory, office manager's costs and general office expenses. The three Chapters also hold regular scheduled meetings, conduct field trips and hold occasional symposia on specific geologic topics.

The day to day business of the GSN is managed by the Executive Committee, which is composed of the President, Vice President, Secretary, Membership Chairperson, Treasurer and Publication Chairperson. The overall direction of the GSN and its three chapters is the responsibility of the Board of Directors, which is composed of six elected and five designated members.

Every year the GSN organizes two field trips during the Spring and Fall providing an opportunity for members to learn about the geology and ore deposits of Nevada and surrounding areas. Each of these field trips is documented in a Special Publication, which provides detailed technical reports, road logs, maps and photos for the areas visited.

Every five years GSN sponsors a symposium which draws scientists from all over the world to share the results of their work and learn about the work of others. These meetings include a full slate of technical sessions, pre- and post-meeting field trips and a trade show. The symposia have been strongly attended and have gained an international reputation for excellence. Proceedings volumes and field trip guidebooks have been published from these symposia. These volumes have won awards for their quality and, taken together, are considered one of the most extensive and authoritative bodies of literature in the world on the geology and ore deposits of the Great Basin and the American Cordillera. The next symposium is scheduled for May, 2010.

The philanthropic mission of the GSN is funded by the GSN Foundation, a 501(c)(3) public charity. The Foundation derives funding from tax-deductible donations, fundraisers and grants from the GSN. Each year, through the GSN Education Committee, the Foundation contributes thousands of dollars toward transportation costs for earth science related, K-12 school field trips. The Education Committee also organizes a speakers bureau and helps with judging of K-12 science fairs. The GSN Foundation also provides funds for scholarships at UNR and UNLV, library grants at UNR and geological mapping grants through the Nevada Bureau of Mines and Geology.

The GSN has an active social calendar that provides opportunities for members to socialize, network, exchange ideas and generally enjoy themselves. In addition to the monthly meetings and semiannual field trips, the GSN holds a spring golf tournament and a fall picnic.



GEOLOGICAL SOCIETY OF NEVADA

P.O. Box 13375, Reno, NV 89507 USA

Phone (775) 323-3500 • Fax (775) 323-3599 • gsn@gsnv.org • www.gsnv.org

Offices are located on the University of Nevada, Reno Campus, Laxalt Mineral Research Center, Room 266
Office hours: 9-4 pm, Monday through Friday

The Geological Society of Nevada (GSN) is a non-profit, educational organization whose principal objective is to promote the advancement of geological sciences, especially as they relate to Nevada. GSN supports the dissemination of information through meetings, field trips, publications and academic endeavors. Membership is open to geologists, geophysicists, geochemists, engineers, educators, students, prospectors or anyone else with an interest in the geological sciences and/or the goals of the GSN.

The GSN membership year begins in June. Annual dues of \$35.00 (\$17.50 for full time students) are due in the fall. The GSN sponsors a Field Trip in the Fall and one in the Spring of each year. Monthly meetings are held on the third Friday of each month, September through May. The following are sanctioned Chapters of the GSN: Elko Chapter, based in Elko; Southern Nevada Chapter, based in Las Vegas, and the Winnemucca Chapter, based in Winnemucca.

Please remember the GSN Foundation when renewing. Foundation dollars are used for the Kindergarten through 12th grade Field Trip Grant Program, Nevada Mapping Grants and University of Nevada scholarships.

MEMBERSHIP APPLICATION/RENEWAL		DATE _____
NAME: _____		POSITION/TITLE _____
CONSULTANT <input type="checkbox"/> COMPANY NAME: _____		
STUDENT <input type="checkbox"/> UNIVERSITY: _____		
ADDRESS: _____		
CITY: _____		STATE/PROVINCE: _____
ZIP: _____ - _____		COUNTRY: _____
PHONE: WORK _____		FAX _____
CELL _____		RESIDENCE _____
E-MAIL: _____		WEB SITE: _____
<input type="checkbox"/> I WOULD LIKE TO HAVE AN ASTERISK BY MY NAME IN THE DIRECTORY INDICATING I AM AVAILABLE FOR CONSULTING.		
<input type="checkbox"/> I HAVE MET THE LICENSING REQUIREMENTS AND WANT "QP" (QUALIFIED PERSON) BY MY NAME IN THE DIRECTORY.		
I authorize GSN to send to me, via email: GSN announcements, publication updates, employment opportunities, etc.		Yes <input type="checkbox"/> No <input type="checkbox"/>
<input type="checkbox"/> Regular Membership Dues - email newsletter \$35.00	<input type="checkbox"/> Honorary	\$ _____
<input type="checkbox"/> Regular Membership Dues - hardcopy newsletter via postal service \$40.00	<input type="checkbox"/> Honorary	_____
<input type="checkbox"/> International Membership Dues - email newsletter only \$35.00		_____
<input type="checkbox"/> International Membership Dues - hardcopy newsletter via postal service \$50.00		_____
<input type="checkbox"/> Student Membership Dues - email newsletter only \$17.50		_____
Optional Chapter Affiliation (to be eligible for chapter voting, choose one)		
<input type="checkbox"/> Elko Chapter		
<input type="checkbox"/> Southern Nevada Chapter		
<input type="checkbox"/> Winnemucca Chapter		
Student Dinner Fund		
<input type="checkbox"/> I wish to donate to the GSN Student Dinner Fund _____		
GSN Foundation		
<input type="checkbox"/> I wish to donate to the GSN Foundation _____		
(Donated funds will be used for unrestricted grants and scholarships unless otherwise specified _____.)		
TOTAL DUE		\$ _____
Payment: <input type="checkbox"/> Check # _____ <input type="checkbox"/> Cash <input type="checkbox"/> Visa <input type="checkbox"/> MC Card # _____		
Exp. Date _____ Signature (as it appears on card) _____		
Return with payment to: Geological Society of Nevada, P.O. Box 13375, Reno, NV 89507 Fax to 775/323-3599, email gsn@gsnv.org		

GEOLOGICAL SOCIETY OF NEVADA



gsn@gsnv.org • www.gsnv.org
Telephone (775) 323-3500 FAX (775) 323-3599
Post Office Box 13375
Reno NV 89507
USA

NON PROFIT
ORGANIZATION
U.S. POSTAGE
PAID
RENO, NV
PERMIT NO. 931

MEMBERSHIP RENEWAL NOTICE FOR 2007/2008

Reminder that your 2007/2008 Membership Dues are due by October 31, 2007. Dues this year are \$35.00 with no additional Chapter Dues. Please check the appropriate box on the Membership Form if you would like to be affiliated with one of the Chapters in Elko, Winnemucca or Southern Nevada.

You can renew your dues now by downloading the form from the GSN website: www.gsnv.org and mail it with your payment to GSN, PO Box 13375, Reno, NV 89507 or fax a credit card payment to the office at 775/323-3599.

Please make sure to update any address changes, especially emails and QP status. When you renew your membership dues this year, please consider making a tax-deductible donation to the GSN Foundation or Student Dinner Fund. Foundation dollars are used exclusively for the Kindergarten through 12th grade Field Trip Grant Program, Nevada Mapping Grants and University of Nevada scholarships. The Student Dinner Fund is used to purchase dinner for students who attend the monthly membership meetings.

Unsure if you have already renewed your dues for this fiscal year? Please contact Rhonda Bayley at the GSN office. Thank you!